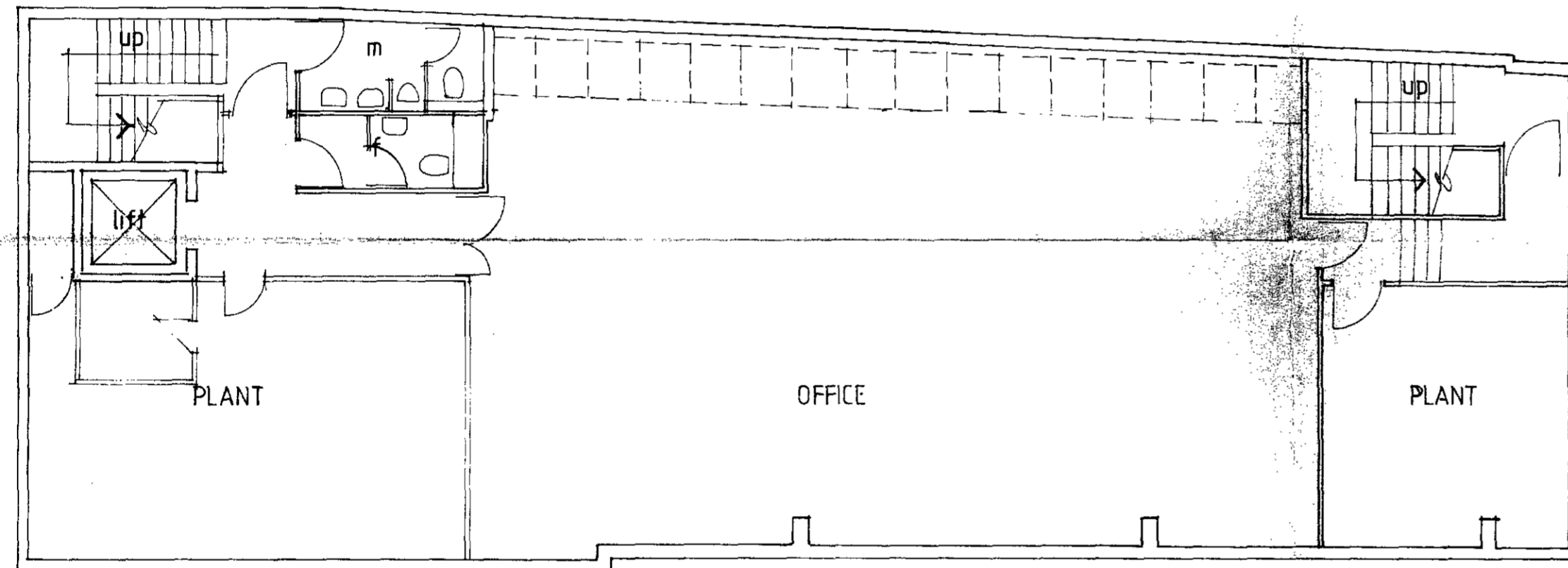
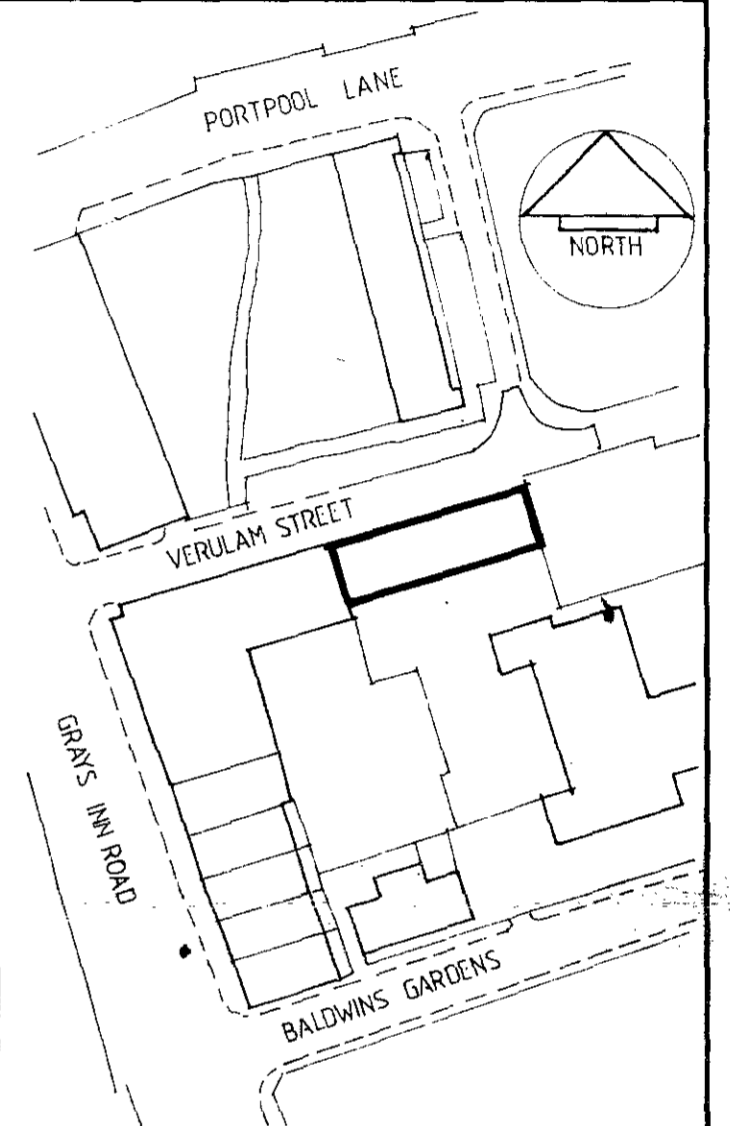


MARKHEATH SECURITIES GROUP

Markheath House, Lower Park Road,
Off Station Road, New Southgate,
London N11 1QD 01-368 5555



BASEMENT PLAN



LOCATION PLAN

LONDON BOROUGH OF CAMDEN
TOWN AND COUNTRY PLANNING ACTS
14 NOV 1990
PLANS APPROVED
ON BEHALF OF THE COUNCIL

LONDON BOROUGH OF CAMDEN
PLANNING AND TRANSPORT
DEPARTMENT
- 8 AUG 1990
RECEIVED

RECORDS COPY

TP
9000364
TP / 9000423

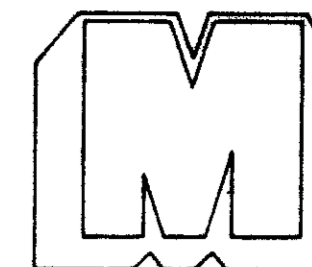
REV A 27/1/90 STAIR & PATENT GLAZING
AMENDED

8-14 VERULAM ST
LONDON WC1

BASEMENT PLAN

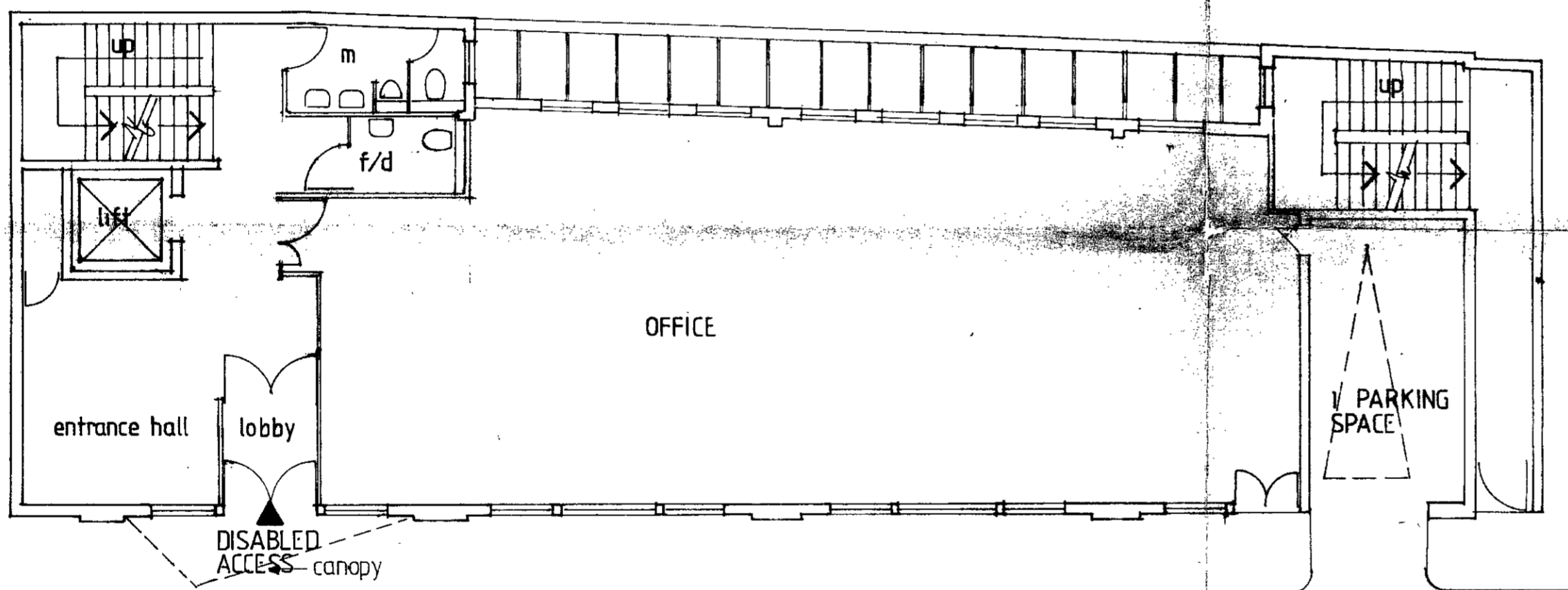
Scale: 1:100

Date: JULY 1990 Drg. No. 201/01A



MARKHEATH SECURITIES GROUP

Markheath House, Lower Park Road,
Off Station Road, New Southgate,
London N11 1QD 01-368 5555



GROUND FLOOR PLAN

LONDON BOROUGH OF CAMDEN
TOWN AND COUNTRY PLANNING ACTS
14 NOV 1990
PLANS APPROVED
ON BEHALF OF THE COUNCIL

LONDON BOROUGH OF CAMDEN
PLANNING AND TRANSPORT
DEPARTMENT
23 AUG 1990
RECEIVED

TP9000423

TP/9000364

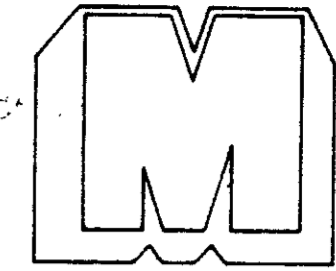
REV B 27/7/00 OFFICE REAR WALL AND DOORWAY
WITH REAR BOUNDARY RE UNPROTECTED ASPENS
REV A 24/7/00 DISABLED TOILET ADDED

8-14 VERULAM ST
LONDON WC 1

GROUND FLOOR PLAN

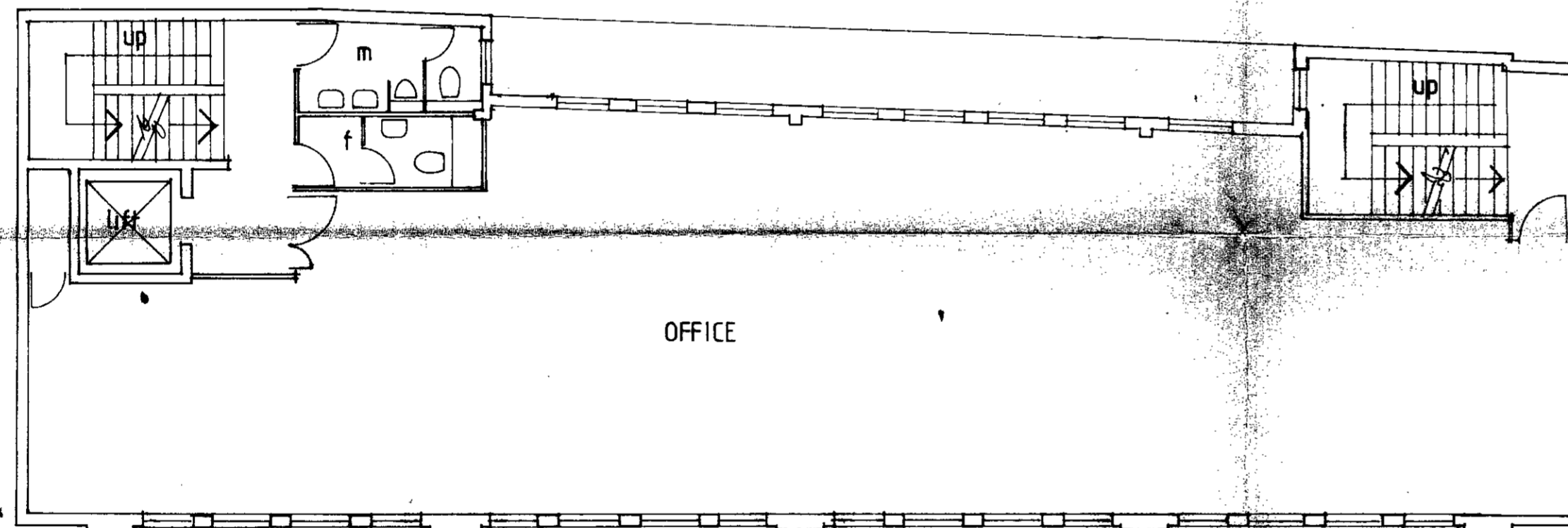
Scale: 1:100

Date: JULY 1990 Drg. No. 201/02B



MARKHEATH SECURITIES GROUP

Markheath House, Lower Park Road,
Off Station Road, New Southgate,
London N11 1QD 01-368 5555



FIRST FLOOR

LONDON BOROUGH OF CAMDEN
TOWN AND COUNTRY PLANNING ACTS
14 NOV 1990
PLANS APPROVED
ON BEHALF OF THE COUNCIL

LONDON BOROUGH OF CAMDEN
PLANNING AND TRANSPORT
DEPARTMENT
- 8 AUG 1990
RECEIVED

719000 364
719000 423

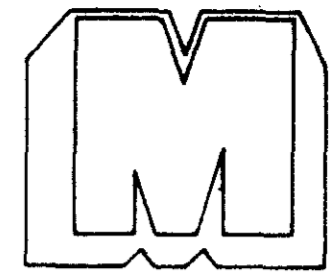
REV A 27/1/00 OFFICE REAR WALL AMENDED PARTIALLY
WITH REAR BOUNDARY RE UNPROTECTED AREAS

8-14 VERULAM ST
LONDON WC1

FIRST FLOOR PLAN

Scale: 1:100

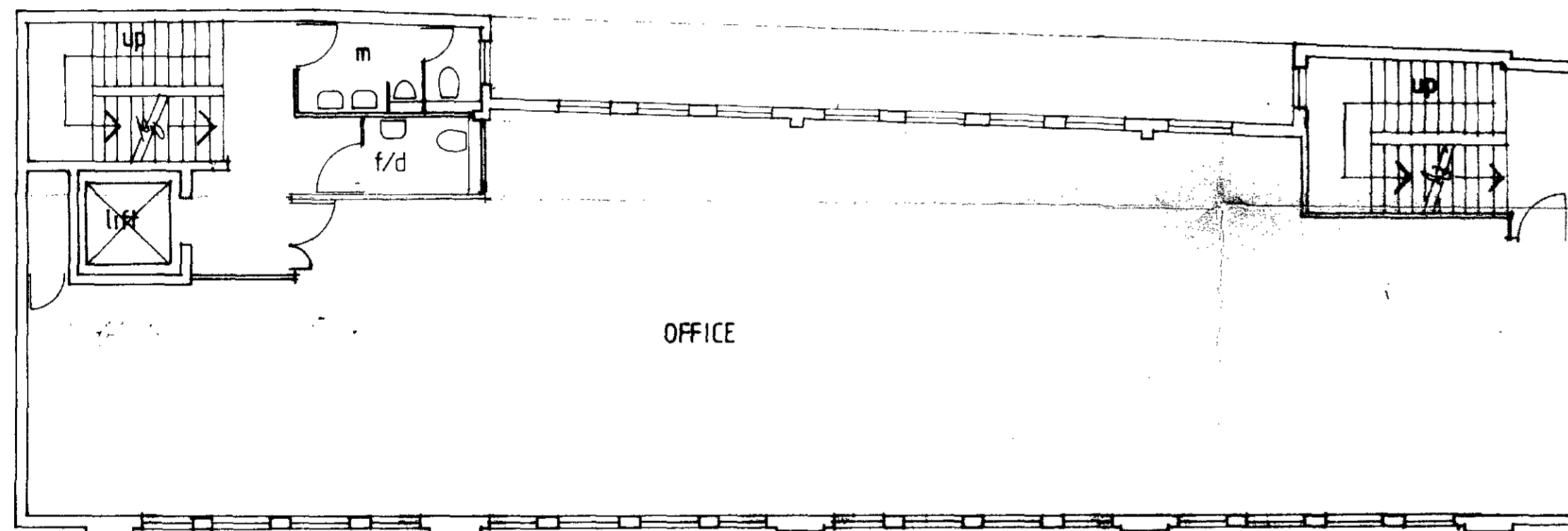
Date: JULY 1990 Drg. No. 201/03A



MARKHEATH SECURITIES GROUP

Markheath House, Lower Park Road,
Off Station Road, New Southgate,
London N11 1QD 01-368 5555

RECEIVED
-8 AUG 1990
DEPARTMENT
PLANNING AND TRANSPORT
LONDON BOROUGH OF CAMDEN



SECOND FLOOR

LONDON BOROUGH OF CAMDEN
TOWN AND COUNTRY PLANNING ACTS
14 NOV 1990
PLANS APPROVED
BY THE COUNCIL

LONDON BOROUGH OF CAMDEN
PLANNING AND TRANSPORT
DEPARTMENT
- 8 AUG 1990
RECEIVED

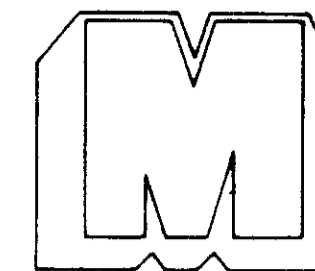
REV B. 27/7/00 OFFICE REAR WALL AMENDED PARALLEL
WITH REAR BOUNDARY RE UNPROTECTED AREAS
REV A. 24/7/00 DISABLED TOILET ADDED

8-14 VERULAM ST
LONDON WC1

7P/9000 364
7P/9000 423

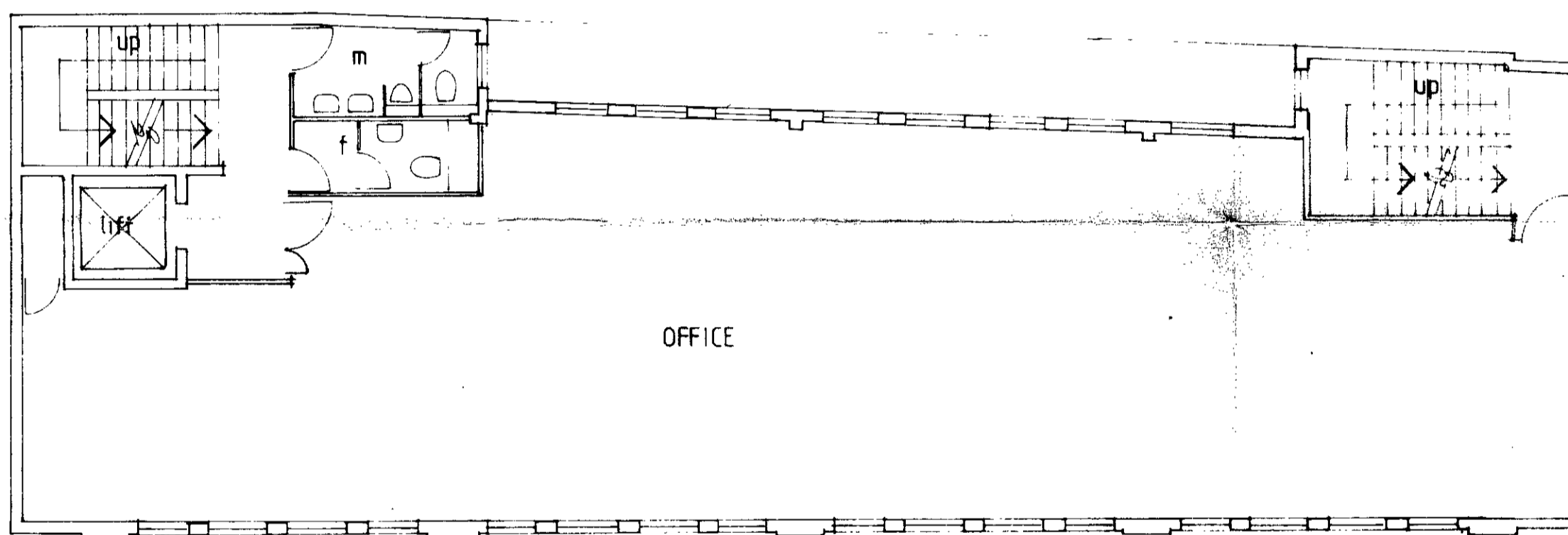
SECOND FLOOR PLAN

Scale: 1:100
Date: JULY 1990 Drg. No. 201/04B



MARKHEATH SECURITIES GROUP

Markheath House, Lower Park Road,
Off Station Road, New Southgate,
London N11 1QD 01-368 5555



THIRD FLOOR

LONDON BOROUGH OF CAMDEN
TOWN AND COUNTRY PLANNING ACTS
14 NOV 1990
PLANS APPROVED
ON BEHALF OF THE COUNCIL

LONDON BOROUGH OF CAMDEN
PLANNING AND TRANSPORT
DEPARTMENT
- 8 DEC 1990
RECEIVED

REV. A. OFFICE REAR WALL AMENDED PARALLEL
WITH REAR BOUNDARY RE UNPROTECTED AREAS 27/7/00

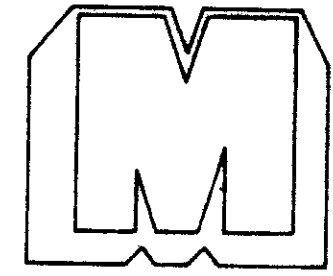
8-14 VERULAM ST
LONDON WC1

THIRD FLOOR PLAN

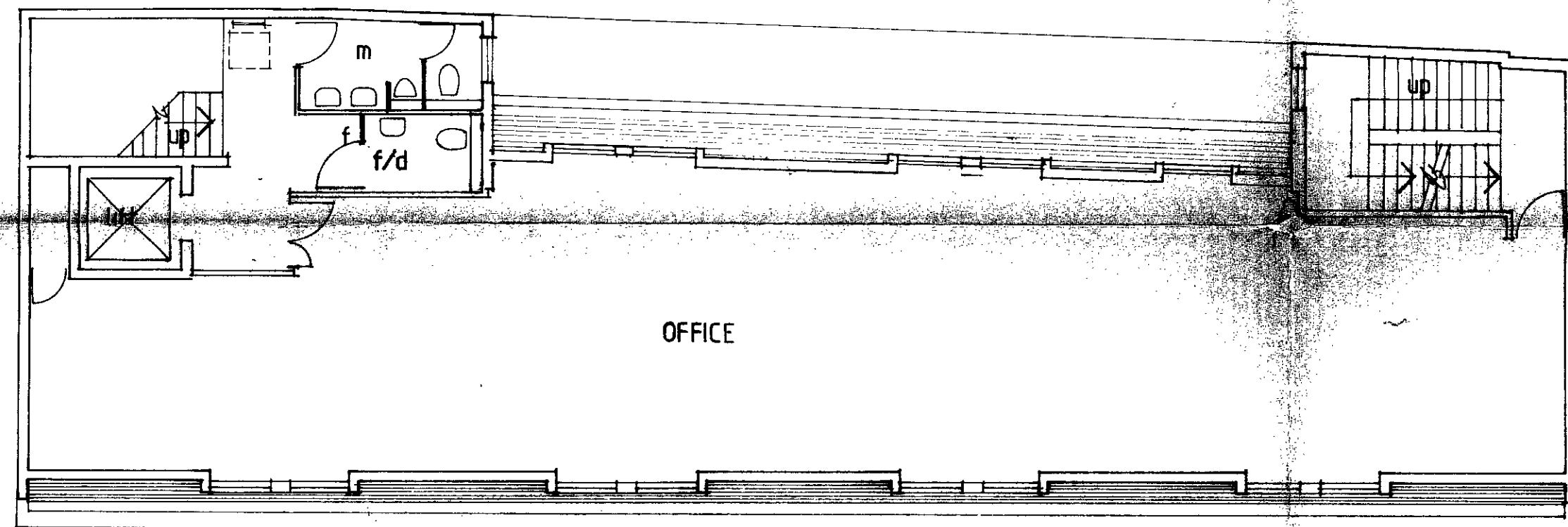
Scale: 1:100

Date: JULY 1990 Drg. No. 201/05A

11/19/90 423



MARKHEATH SECURITIES GROUP
 Markheath House, Lower Park Road,
 Off Station Road, New Southgate,
 London N11 1QD 01-388 5555



FOURTH FLOOR

LONDON BOROUGH OF CAMDEN
 TOWN AND COUNTRY PLANNING ACTS
14 NOV 1990
 PLANS APPROVED
 ON BEHALF OF THE COUNCIL

LONDON BOROUGH OF CAMDEN
 PLANNING AND TRANSPORT
 DEPARTMENT
 - 8 AUG 1990
 RECEIVED

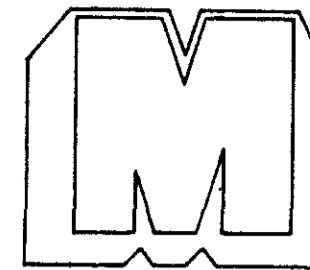
REV B 21/7/90 OFFICE REPAIR WORK AMENDED PARALLEL
 WITH EXISTING BOUNDARY RE UNPROTECTED AREAS
 REV A 24/7/90 DISABLED TOILET ADDED

8-14 VERULAM ST
 LONDON WC1

FOURTH FLOOR PLAN

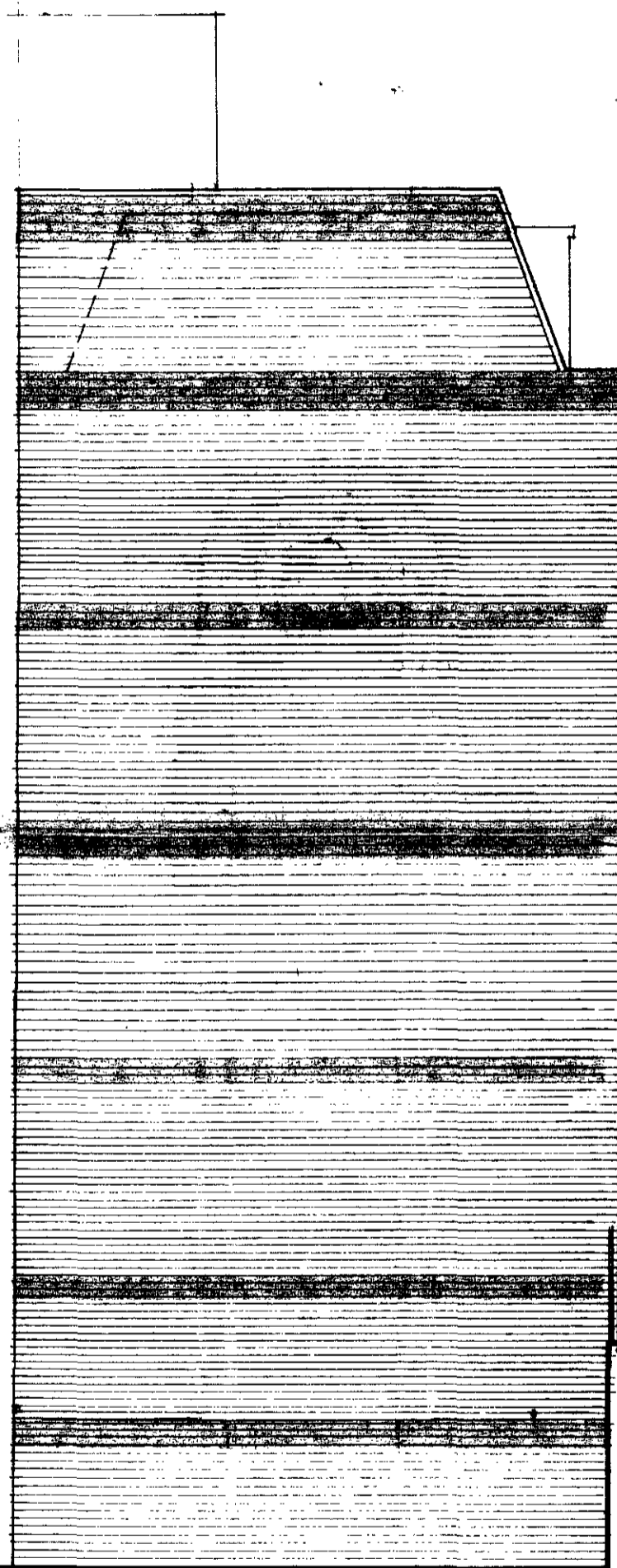
Scale: 1:100
 Date: JULY 90 Drg. No. 201/06 B

1500000000
 7/19000 423



MARKHEATH SECURITIES GROUP

Markheath House, Lower Park Road,
Off Station Road, New Southgate,
London N11 1QD 01-368 5555



*originals incl design
kept
see letter dated
22/10/90
CB*

VERULAM ST

SIDE ELEVATION

LONDON BOROUGH OF CAMDEN
TOWN AND COUNTRY PLANNING ACTS
14 NOV 1990
PLANS APPROVED
ON BEHALF OF THE COUNCIL

*7P/9000364 R2 R3 R2
7P/9000323 R2 R3 R2*

*REV 17/90 BRICK BANDING ADDED
REV 26/90 LIFT MOTOR ROOM AMENDED*

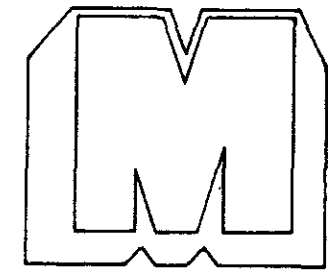
LONDON BOROUGH OF CAMDEN
PLANNING AND TOWN
DEPARTMENT
RECEIVED
5-07-1990

8-14 VERULAM ST,
LONDON WC1

SECTION & ELEVATION

Scale: 1:100

Date: JULY 1990 Drg. No. 201/00B



MARKHEATH SECURITIES GROUP

Markheath House, Lower Park Road,
Off Station Road, New Southgate,
London N11 1QD 01-368 5555

LONDON BOROUGH OF CAMDEN
PLANNING AND TRANSPORT
DEPARTMENT
13 SEP 1990
RECEIVED

LONDON BOROUGH OF CAMDEN
TOWN AND COUNTRY PLANNING ACTS
14 NOV 1990
PLANS APPROVED
ONE HALF OF THE COUNCIL

REV B 28/8/90 GF WINDOWS AMENDED
REV A 28/8/90 GF WINDOWS AMENDED

8-14 VERULAM ST
LONDON WC1

VERULAM ST ELEVATION

Scale: 1:100 Rev. B
Date: JULY 1990 Drg. No. 201/07



VERULAM STREET ELEVATION

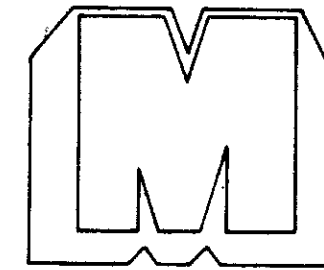
As detailed enough
natural anodized aluminium

glazing panels?
glazing

Bronze Tint

TP/9000 364
TP/9000 423

LONDON BOROUGH OF CAMDEN
PLANNING AND TRANSPORT
DEPARTMENT
13 SEP 1990
RECEIVED



MARKHEATH SECURITIES GROUP

Markheath House, Lower Park Road,
Off Station Road, New Southgate,
London N11 1QD 01-368 5555

*Brick Design
not acceptable
originally approved
kept see
letter 22/10/90
CB*

LONDON BOROUGH OF CAMDEN
TOWN AND COUNTRY PLANNING ACTS
14 NOV 1990
PLANS APPROVED
ON BEHALF OF THE COUNCIL

LONDON BOROUGH OF CAMDEN
PLANNING AND TRANSPORT
DEPARTMENT
2 OCT 1990
FILED

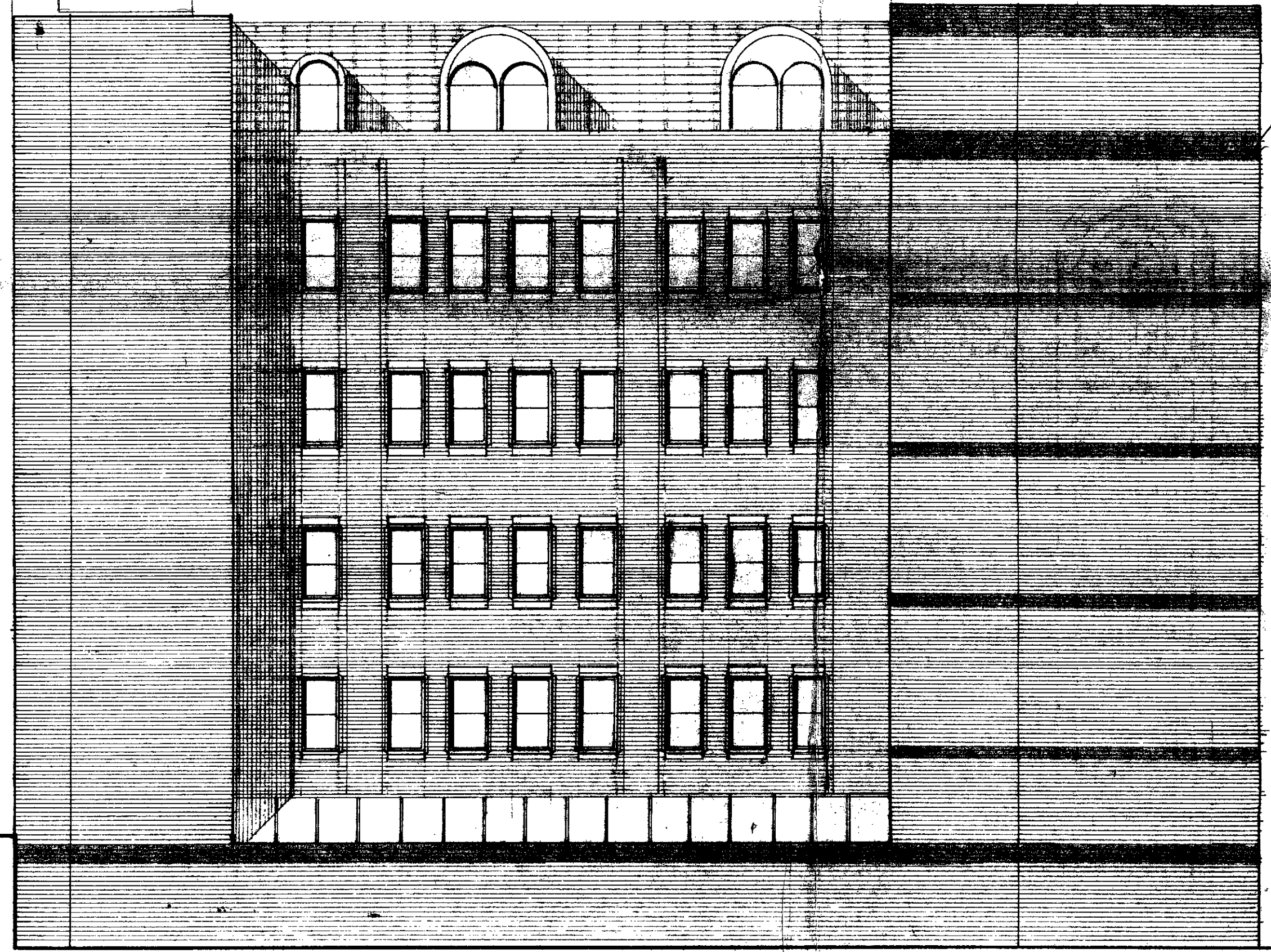
*TP/2000364
TP/2000423*

*REV 27 9 90 BRICK BANDING ADDED
REV 25 9 90 LIFT MOTOR ROOM AMENDED*

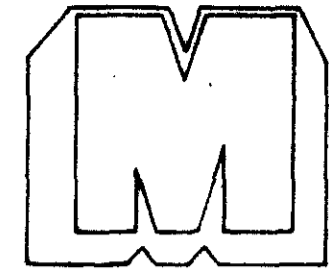
8-14 VERULAM ST
LONDON WC1

REAR ELEVATION

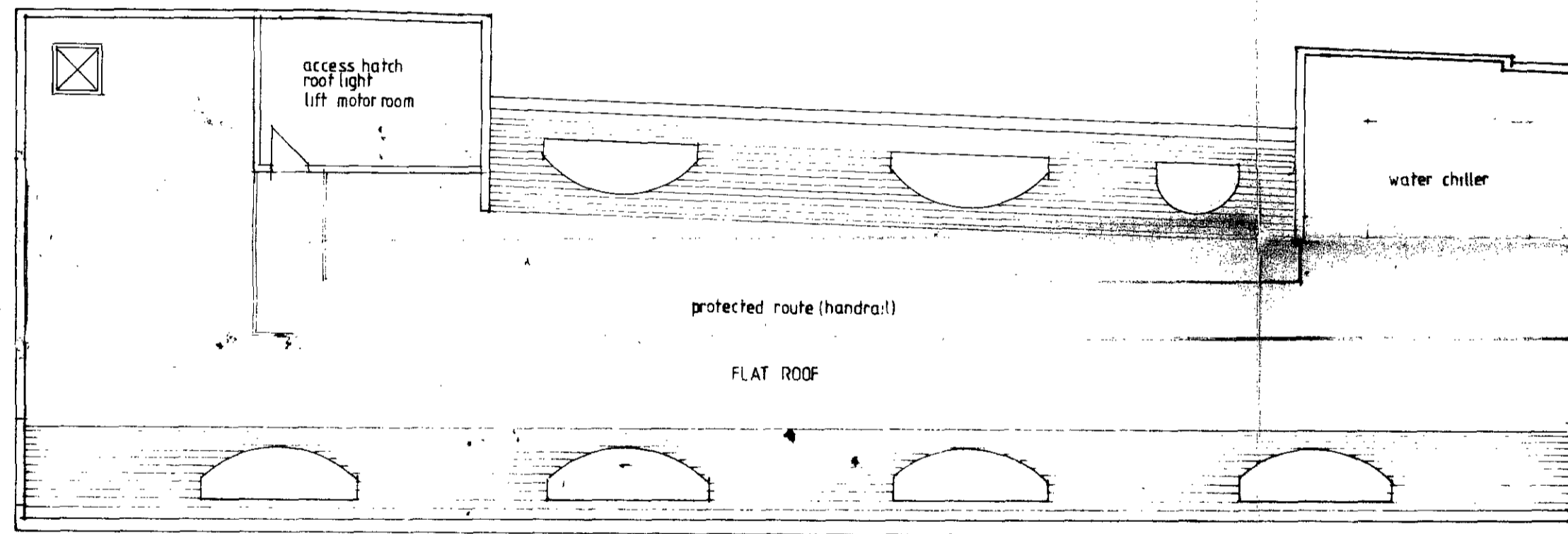
Scale: 1:100
Date: JULY 1990 Drg. No. 201/08B



REAR ELEVATION



MARKHEATH SECURITIES GROUP
Markheath House, Lower Park Road,
Off Station Road, New Southgate,
London N11 1QD 01-368 5555



PLANT ROOM

LONDON BOROUGH OF CAMDEN
TOWN AND COUNTRY PLANNING ACTS
14 NOV 1990
PLANS APPROVED
ON BEHALF OF THE COUNCIL

LONDON BOROUGH OF CAMDEN
PLANNING AND BUILDING
DEPARTMENT
27 SEP 1990
RECEIVED

Handwritten notes:
7/19/90 2764
7/19/90 23

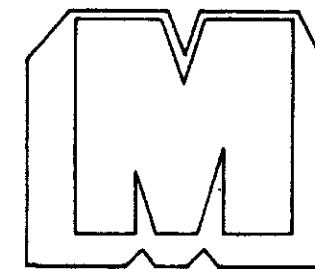
REV B 25 9 90 LIFT MOTOR ROOM REPOSITIONED
REV A 27/7/90 OFFICE REVISION AMENDED PARALLEL
WITH REAR BOUNDARY RE UNPROTECTED AREAS

8-14 VERULAM ST
LONDON WC1

PLANT/ROOF PLAN

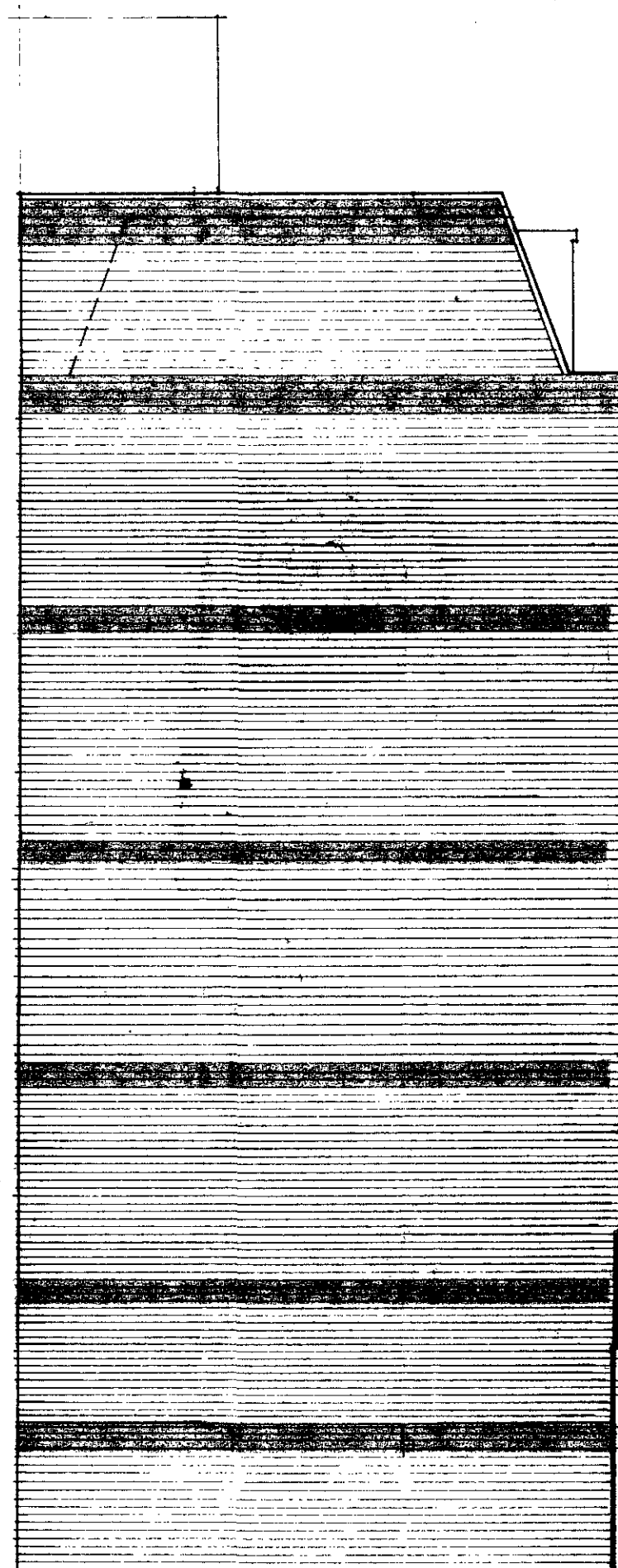
Scale: 1:100

Date: JULY 1990 Drg. No. 201/10



MARKHEATH SECURITIES GROUP

Markheath House, Lower Park Road,
Off Station Road, New Southgate,
London N11 1QD 01-368 5555



VERULAM ST

SIDE ELEVATION

LONDON BOROUGH OF CAMDEN
TOWN AND COUNTRY PLANNING ACTS
14 NOV 1990
PLANS APPROVED
ON BEHALF OF THE COUNCIL

LONDON BOROUGH OF CAMDEN
PLANNING AND TRANSPORT
DEPARTMENT
3-OCT-1990
RECEIVED

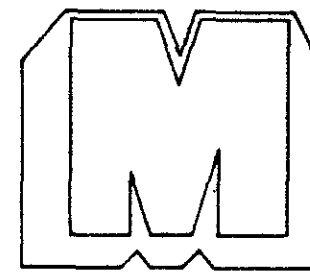
TP/9000364
TP/9000423

* REVB 27 9 90 BRICK BANDING ADDED
REVA 25 9 90 LIFT MOTOR ROOM AMENDED

8-14 VERULAM ST
LONDON WC1

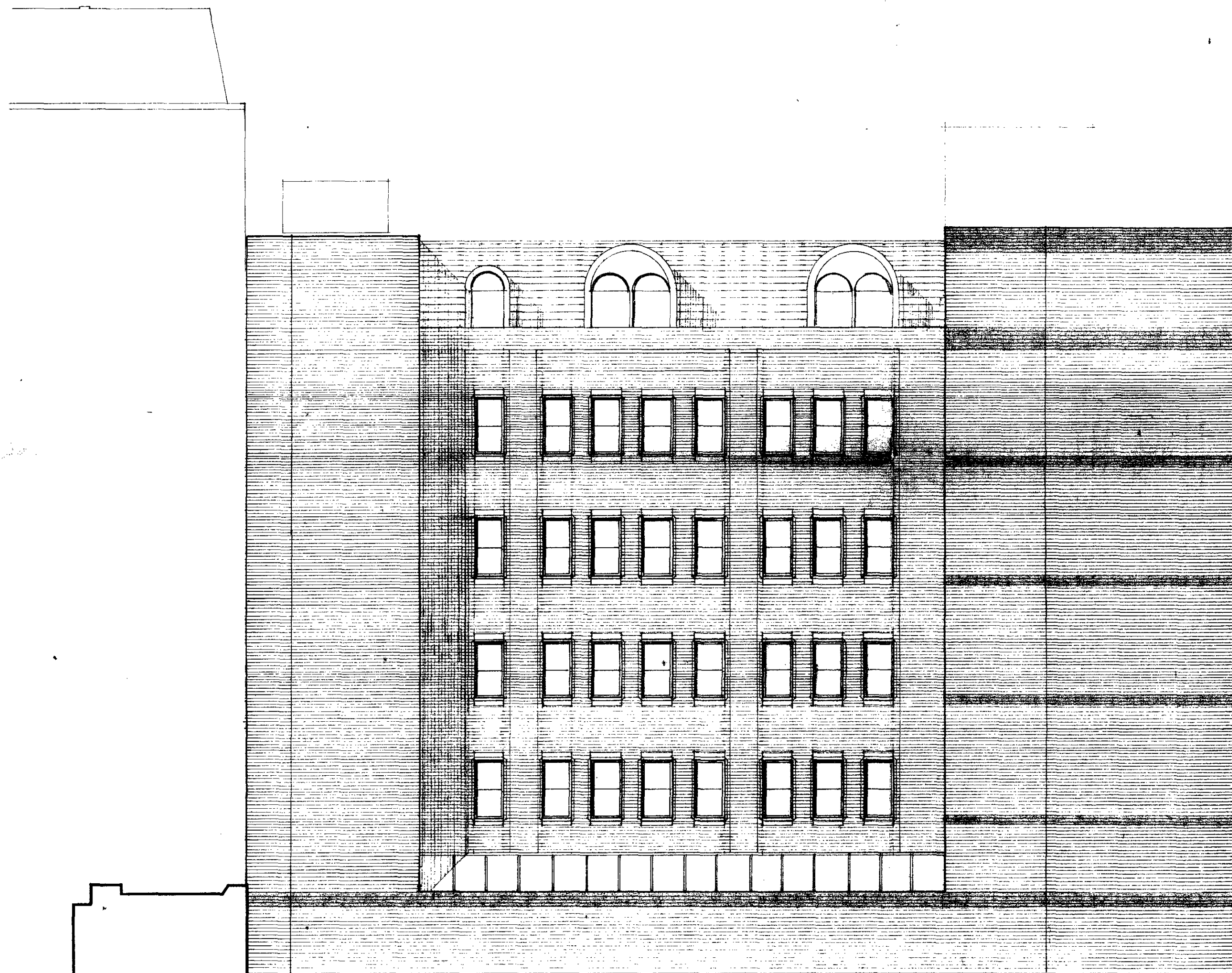
SECTION & ELEVATION

Scale: 1:100
Date: JULY 1990 Drg. No. 201/00B



MARKHEATH SECURITIES GROUP

Markheath House, Lower Park Road,
Off Station Road, New Southgate,
London N11 1QD 01-368 5555



REAR ELEVATION

LONDON BOROUGH OF CAMDEN
TOWN AND COUNTRY PLANNING ACTS
14 NOV 1990
PLANS APPROVED
ON BEHALF OF THE COUNCIL

RECEIVED
OCT 1990
DEPARTMENT
OF TRANSPORT
BOROUGH OF CAMDEN

TP / 9000 364
TP / 9000 423

REVB 27 9 90 BRICK BANDING ADDED
REVA 25 9 90 LIFT MOTOR ROOM AMENDED

8-14 VERULAM ST
LONDON WC1

REAR ELEVATION

Scale: 1:100
Date: JULY 1990 Drg. No. 201/08