

LONDON BOROUGH OF CAMDEN
 PLANNING, TRANSPORT & HEALTH
 RECEIVED ON

REFRIGERAN PIPEWORK RUN OVER FLAT
 ROOF SECURED TO GALVANISED STEEL CABLE
 TRAY SUPPORTED CLEAR OF ROOF FINISH ON
 HARDWOOD TIMBER BEARERS AT 1.5m MAX.
 CENTRES. MIN. DEPTH OF BEARERS 50mm

ALL PIPEWORK TO BE INSULATED AND
 PAINTED AS SPECIFIED

SOUTH ZONE REFRIGERANT PIPEWORK RISER

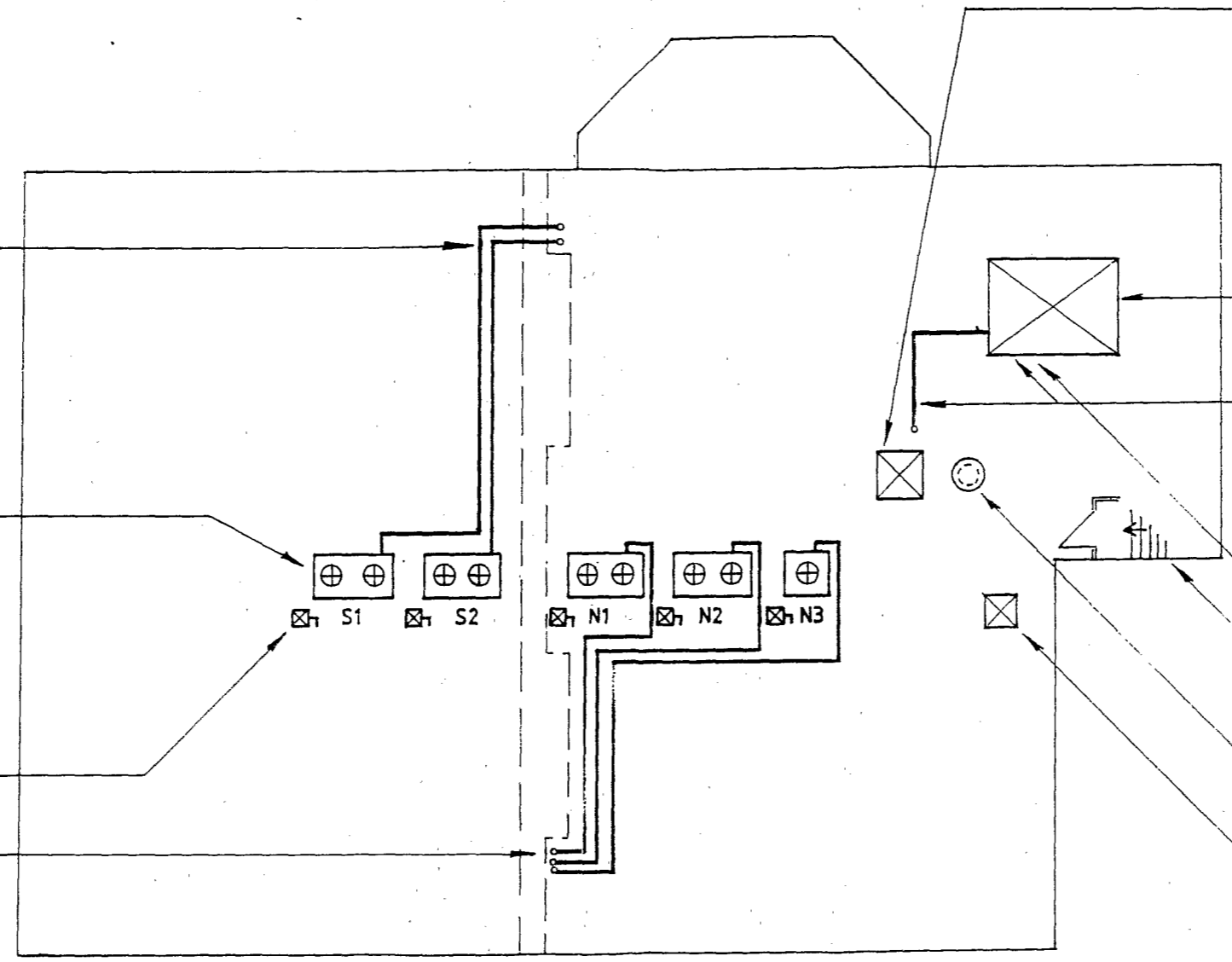
AIR CONDITIONING SYSTEM CONDENSING
 UNITS, ROOF MOUNTED ON PLINTHS
 DETAIL TO BE AGREED WITH ARCHITECT

- S1 SOUTH ZONE 1 MODEL 8G
- S2 SOUTH ZONE 2 MODEL 8G
- N1 NORTH ZONE 1 MODEL 8G
- N2 NORTH ZONE 2 MODEL 8G
- N3 NORTH ZONE 3 MODEL 5G

PROVIDE 32A TP&N ISOLATOR ADJACENT
 TO EACH UNIT

NORTH ZONE REFRIGERANT PIPEWORK RISER

PROVIDE 10no TYPE M LUMINAIRES
 SWITCHED FROM OUTSIDE STAIRWELL FOR
 LIGHTING ROOF AREA
 LUMINAIRES TO BE MOUNTED ON UNISTRUT
 SUPPORTS



ROOFTOP EXTRACT COWL WITH FAN UNIT CONNECTS
 TO 200x200 DUCT RUN TO 200x150 DUCT IN RISER F/B
 FAN TO BE OVER RISER. DETAIL TO BE AGREED WITH
 ARCHITECT
 PROVIDE WEATHERING CRAVAT / COLLAR AROUND
 DUCT PENETRATION OF ROOF

PROVIDE 20A DP ISOLATOR ADJACENT TO FAN

REMOVE EXTG CWS TANK / HOUSING
 PROVIDE NEW TANK IN INSULATED WEATHERPROOF
 ENCLOSURE

28mm CWM RISES F/B CONN TO BALLVALVE WITH I.V.
 35mm CWDS WITH I.V. DROPS T/B
 PIPEWORK DROPS WITHIN ENCLOSURE TO RUN TO RISER
 POSITION IN CEILING VOID
 35mm OVERFLOW RUN TO DISCHARGE OVER ROOF
 PARAPET TO CAUSE NUISANCE
 22mm WARNING PIPE RUN TO DISCHARGE TO PERCY
 STREET FRONTAGE

PROVIDE 20A DP ISOLATOR FOR HEATING IN THIS AREA (R11)

ACCESS STAIR - PROVIDE 2no TYPE F LUMINAIRES
 TWO WAY SWITCHED, FIRE ALARM CALL POINT &
 SMOKE DETECTOR

AIR INLET COWL WITH 150 Ø CONN TO DUCT

PROVIDE 0.1m MINIMUM FREE AREA LIFT SHAFT VENT
 TERMINAL OVER SHAFT

LONDON BOROUGH OF CAMDEN
 TOWN AND COUNTRY PLANNING ACTS

 31 MAR 1995

 PLANS APPROVED
 ON BEHALF OF THE COUNCIL.

9500188

Carl Bro Group
 Consultants
 598-602 Holloway Road, London N19 3PH
 Tel: (071) 272 8979 Fax: (071) 281 1568 Carl Bro Group

These details are confidential to illustrate the
 engineering services only for the purpose intended.
 Arrange to suit current architectural and structural
 details which may vary to some degree from these
 details.

ref	date	notes	issue	date	by	chkd	details
			T	11.94	GBC	AJP	TENDER ISSUE

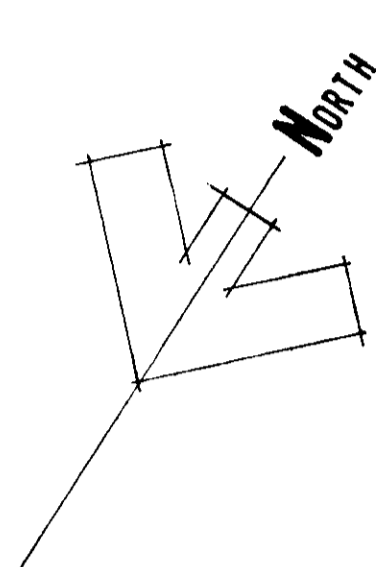
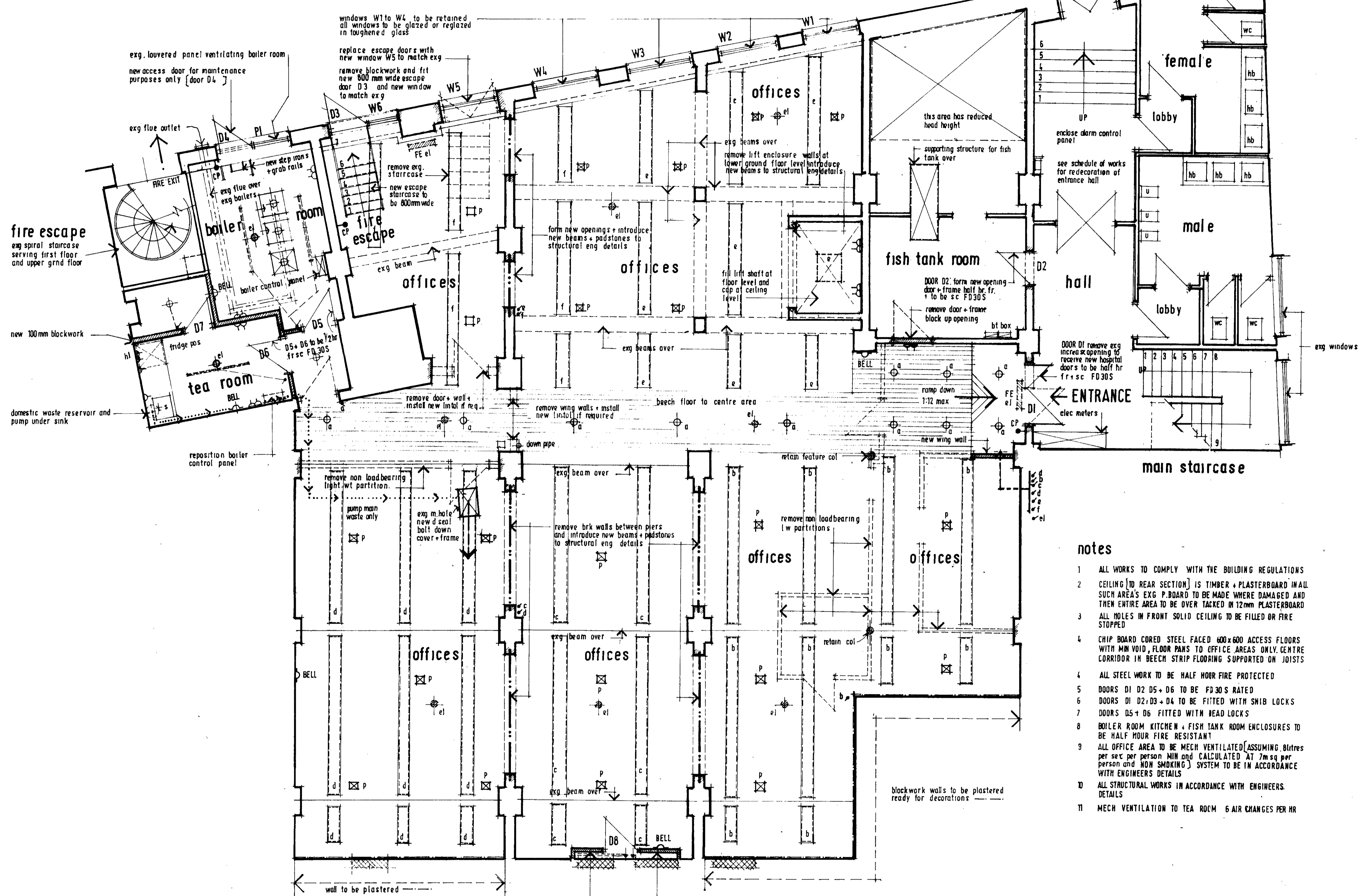
project	10-11 PERCY STREET, W1				
sector	ROOF PLAN				
subject	MECHANICAL & ELECTRICAL SERVICES				
drawn	GBC	DRAWING ISSUE			
scale	NTS	project	system	number	issue
date	11.94	610.244.01	A	501	T

CAD DRAWING FILE NAME :

at full size 0 to 80mm 1:1
 0 10 20 30 40 50

STEPHEN MUSE

ENTRANCE



P9704990

LOWER GROUND FLOOR PLAN

SCALE: 1/50 at A1 size

notes

- 1 ALL WORKS TO COMPLY WITH THE BUILDING REGULATIONS
- 2 CEILING (TO REAR SECTION) IS TIMBER + PLASTERBOARD IN ALL SUCH AREAS EXG P. BOARD TO BE MADE WHERE DAMAGED AND THEN ENTIRE AREA TO BE OVER TAKEN IN 12mm PLASTERBOARD
- 3 ALL HOLES IN FRONT SOLID CEILING TO BE FILLED OR FIRE STOPPED
- 4 CHIP BOARD CORED STEEL FACED 600x600 ACCESS FLOORS WITH MM VOID, FLOOR PANS TO OFFICE AREAS ONLY. CENTRE CORRIDOR IN BEECH STRIP FLOORING SUPPORTED ON JOISTS
- 4 ALL STEEL WORK TO BE HALF HOUR FIRE PROTECTED
- 5 DOORS D1 D2 D5 + D6 TO BE FD30S RATED
- 6 DOORS D1 D2, D3 + D4 TO BE FITTED WITH SMIB LOCKS
- 7 DOORS D5 + D6 FITTED WITH DEAD LOCKS
- 8 BOILER ROOM KITCHEN + FISH TANK ROOM ENCLOSURES TO BE HALF HOUR FIRE RESISTANT
- 9 ALL OFFICE AREA TO BE MECH VENTILATED (ASSUMING 0litres per sec per person MIN and CALCULATED AT 7msq per person and NON SMOKING) SYSTEM TO BE IN ACCORDANCE WITH ENGINEERS DETAILS
- 10 ALL STRUCTURAL WORKS IN ACCORDANCE WITH ENGINEERS DETAILS
- 11 MECH VENTILATION TO TEA ROOM 6 AIR CHANGES PER HR

key

- CP-O FIRE ALARM CALL POINT
- BELL FIRE WARNING BELL
- ⊙ PIN SPOT LIGHTS
- TRACK LIGHTING 'V' LINE or similar CAT 2
- ⊗ FLOOR POWER BOXES
- STRIP LIGHTING
- el EMERGENCY LIGHTING
- FE el FIRE EXIT SIGN WITH EM. LIGHT
- ⊞ WALL MOUNTED SMALL POWER
- ⊙ LIGHT SWITCH
- 600x600 CAT 2 surface mounted LIGHT

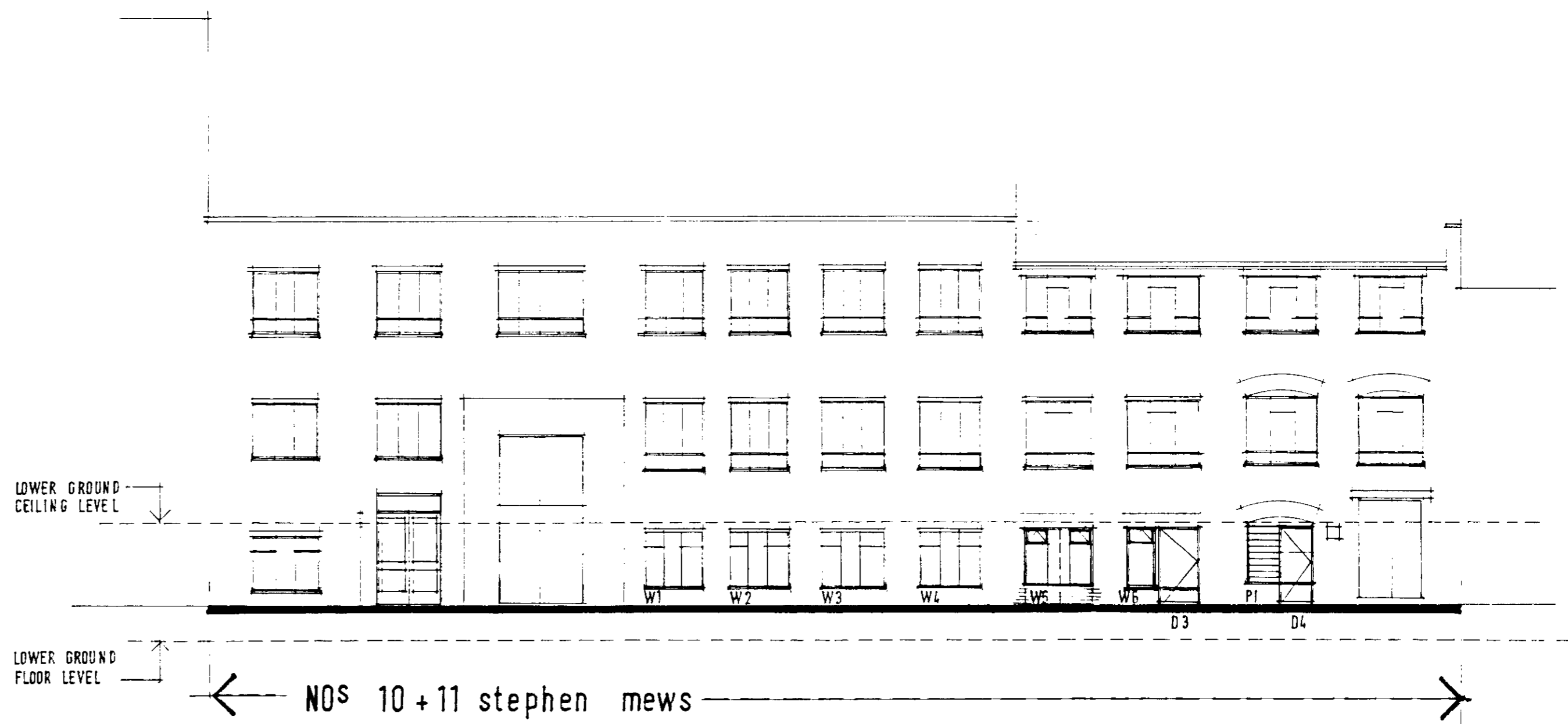
LONDON BOROUGH OF CAMDEN
TOWN AND COUNTRY PLANNING ACTS
31 OCT 1997
PLANS APPROVED
ON BEHALF OF THE COUNCIL

REV A GEN ALT + B REG INFO ADDED SEPT 97

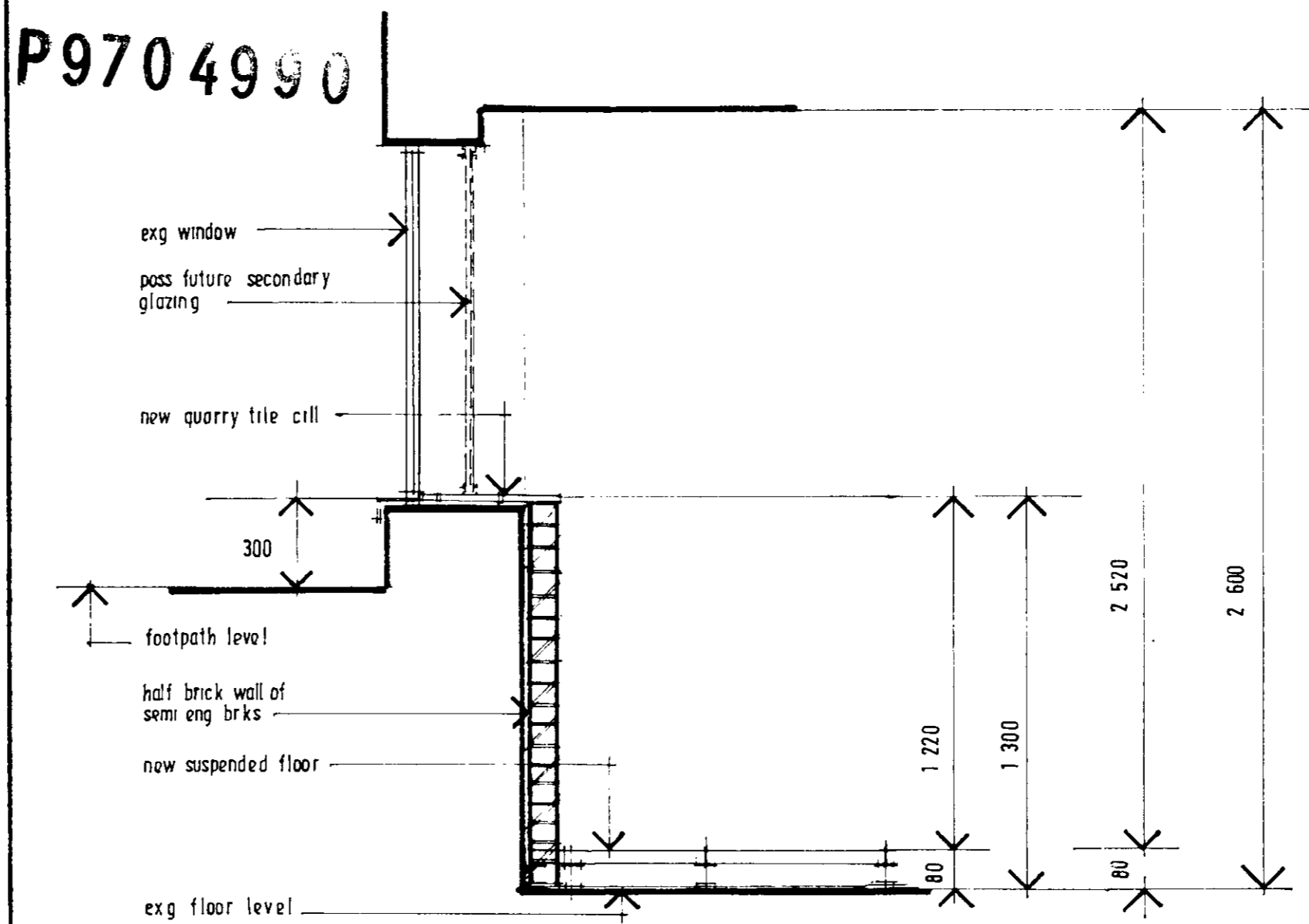
PROPOSED REFERBISHMENT
LOWER GROUND FLOOR PLAN
10+11 STEPHEN MEWS
LONDON W1

SCALE: 1/50
AT A1 SIZE
PLOTTED FROM
ROSE PROJECT SERVICES
DRAWING NO
360:TB:10-11:R:301
REVISION
A

DATE: AUG.1997



FRONT ELEVATION from stephen mews SCALE: 1:100 at A2 size



TYPICAL SECTION SCALE 1:20 at A2 size

LONDON BOROUGH OF CAMDEN
 LEAD AND BUILDING MATERIALS
 21 OCT 1997
 PLANS APPROVED
 ON BEHALF OF THE COUNCIL

REV A B CONTROL INFO ADDED

SEPT 1997

PROPOSED REFERBISHMENT
 FRONT ELEVATION + SECTION
 10 + 11 STEPHEN MEWS
 LONDON W1

SCALE: 1:100 + 1:20
 AT A2 SIZE

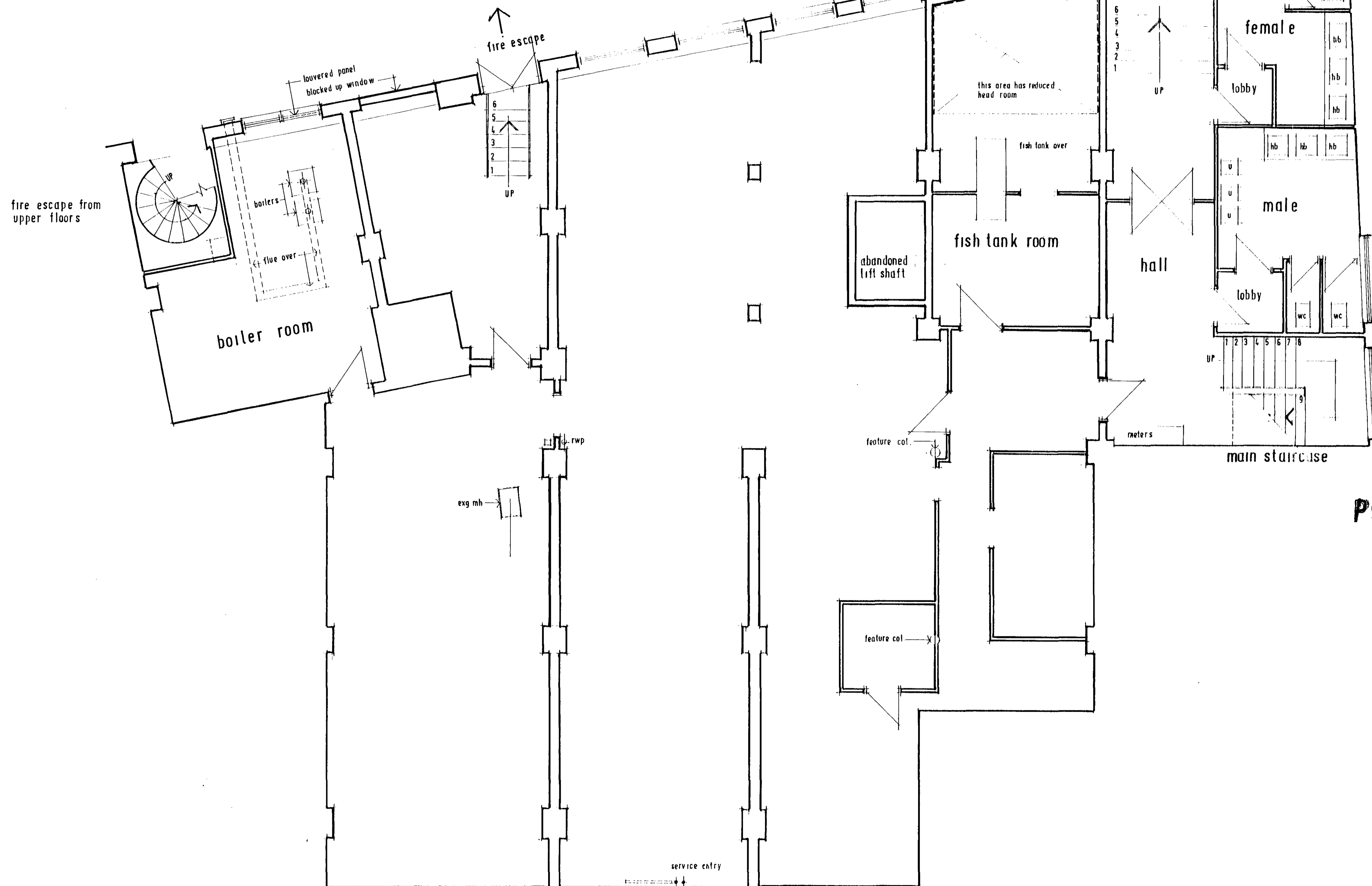
DATE AUG 1997

DRAWING NO

360 TBI 10 11 R 302 A

STEPHEN MEWS

ENTRANCE



P9704990

LOWER GROUND FLOOR PLAN
SCALE 1:50 AT A1 SIZE

LONDON BOROUGH OF CAMDEN
TOWN ARCHITECTURAL SERVICES
31 OCT 1997
PLANS APPROVED
ON BEHALF OF THE COUNCIL

<p>SURVEY DRAWING LOWER GROUND FLOOR PLAN. 10, 11 STEPHEN MEWS LONDON W1</p>	<p>SCALE: 1:50 AT A1 SIZE PLOTTED FROM ROSE PROJECT SERVICES</p>	<p>DATE SEPT 1997</p>
	<p>360 S 10 11 01</p>	<p>REVISIONS</p>