

NOTE:  
This secondary escape route to pavement level, Bloomsbury Square, is applicable if proposal for 21, Barter Street is not proceeded with.

AREA SHADDED IN RED PENCIL IS FOR RESIDENTIAL PURPOSES.

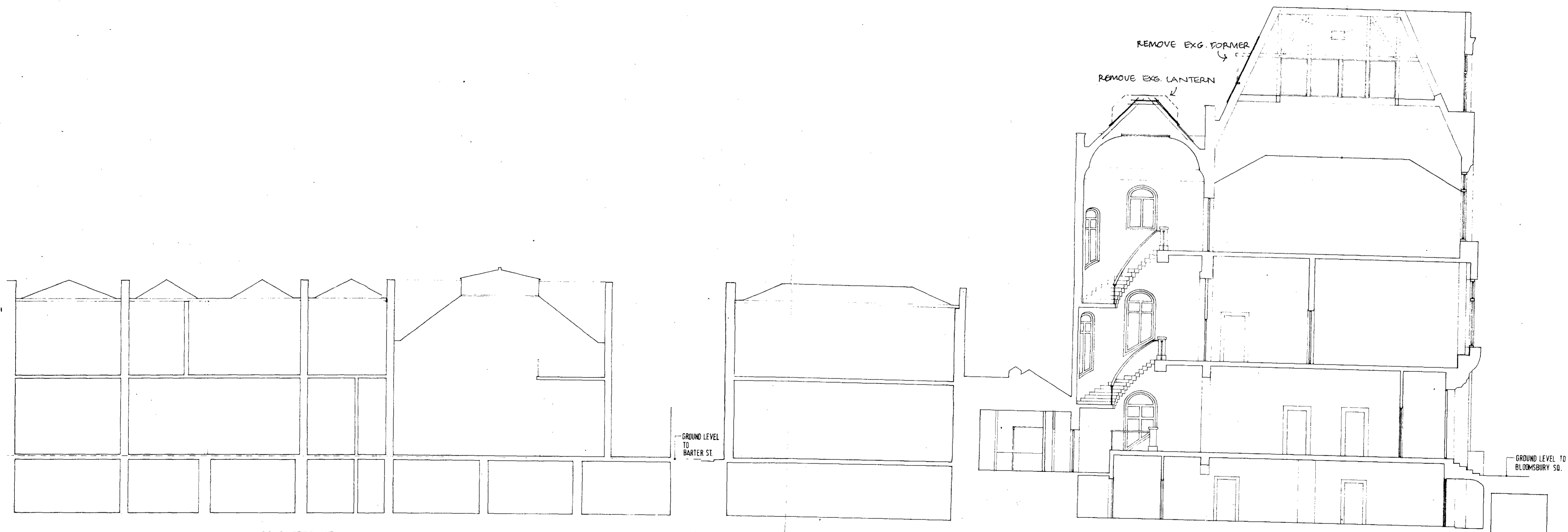
LONDON BOROUGH OF CAMDEN  
TOWN AND COUNTRY PLANNING ACTS  
24 APR 1979  
PLANS APPROVED  
NOT APPROVED  
ON BEHALF OF THE COUNCIL

JTP/N14/23/E/27990 (2)

contract title	drawing title	scale
<b>2/3 BLOOMSBURY SQ.</b>	<b>BASEMENT</b>	
<b>T P Bennett &amp; Son</b> Chartered Architects 262 High Holborn WC1V 7DU Telephone 01 405 9277	contract number <b>5296 SK 24</b>	date Jan 79 drawn A

Rev. A. Note re. escape route added

21-5-79 A.S.



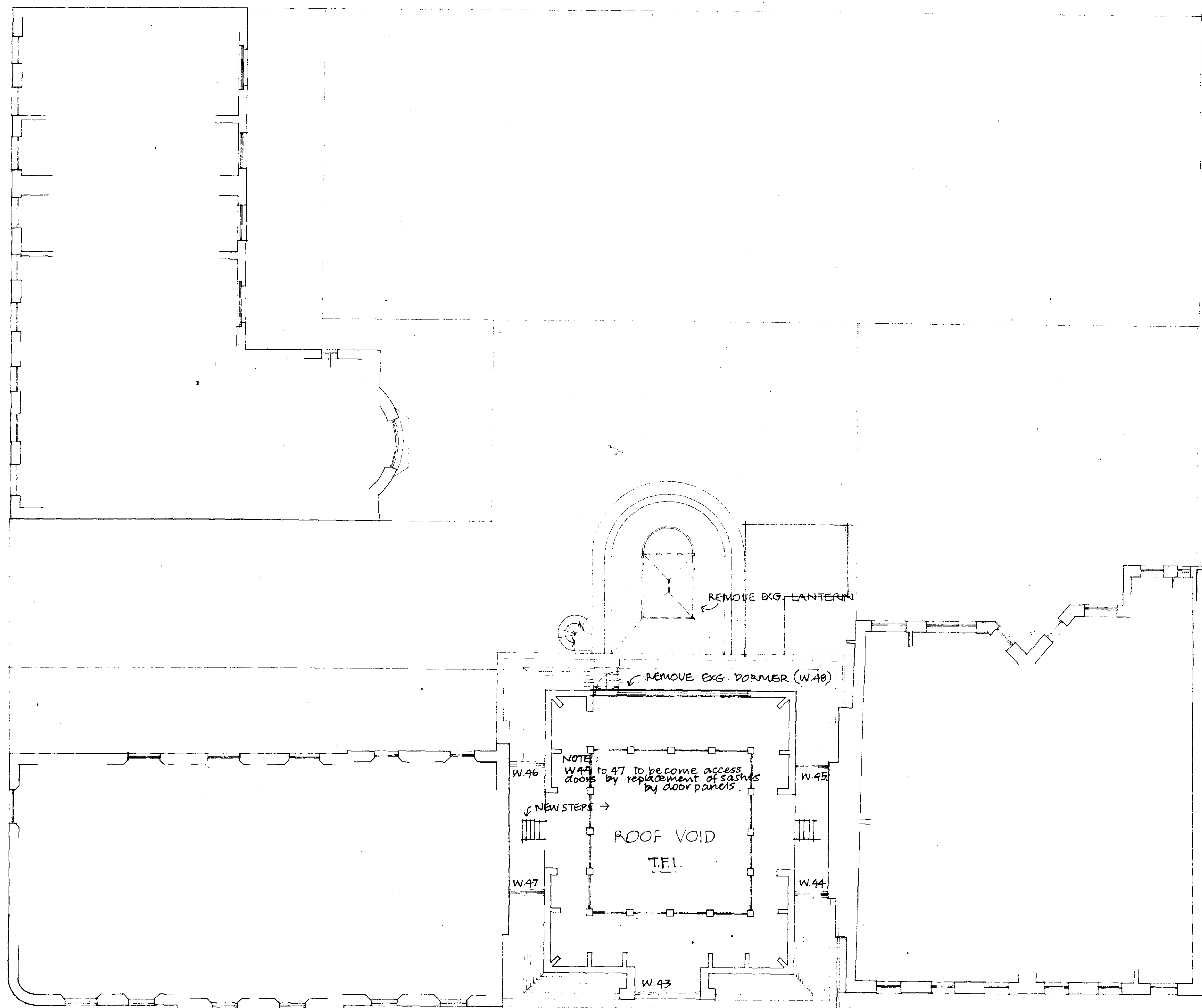
21 BARTER ST.

BARTER ST. & BLOOMSBURY SQ.

LONDON BOROUGH OF CAMDEN  
 TOWN AND COUNTRY PLANNING ACTS  
 24 APR 1979  
 PLANS APPROVED  
 ON BEHALF OF THE COUNCIL

CTP/N14/23/E/27990

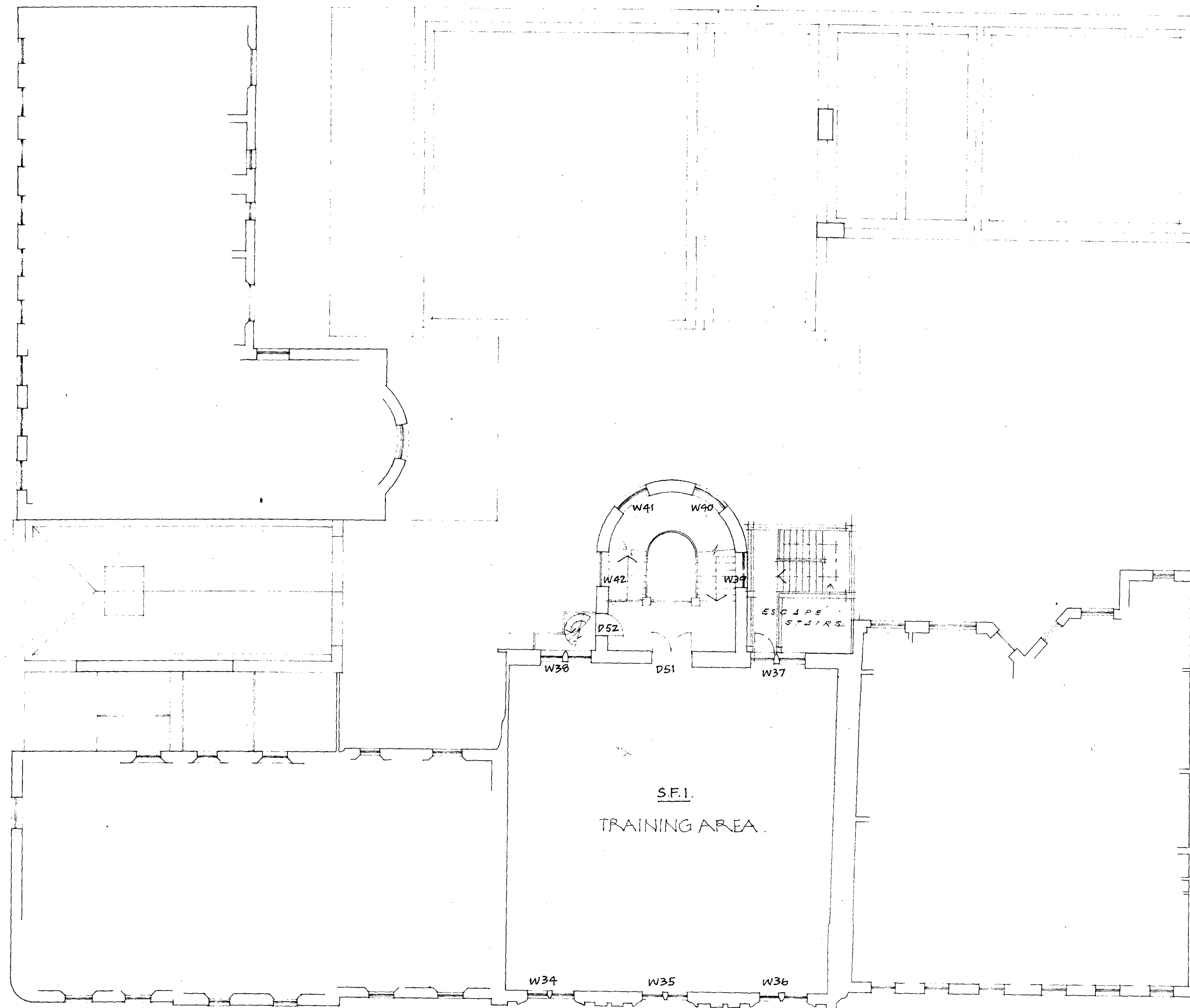
contract title <b>2/3 BLOOMSBURY SQ.</b>		drawing title <b>SECTIONS</b>		scale 1:100
T P Bennett & Son Chartered Architects 262 High Holborn WC1V 7DU Telephone 01 405 9277		contract	drawing number <b>5296 SK 29</b>	date Jan. 1979
			drawn	revision



LONDON BOROUGH OF CAMDEN  
 TOWN AND COUNTRY PLANNING ACTS  
 24 APR 1979  
 PLANS APPROVED  
 ON BEHALF OF THE COUNCIL

CTP/114/23/E/27990

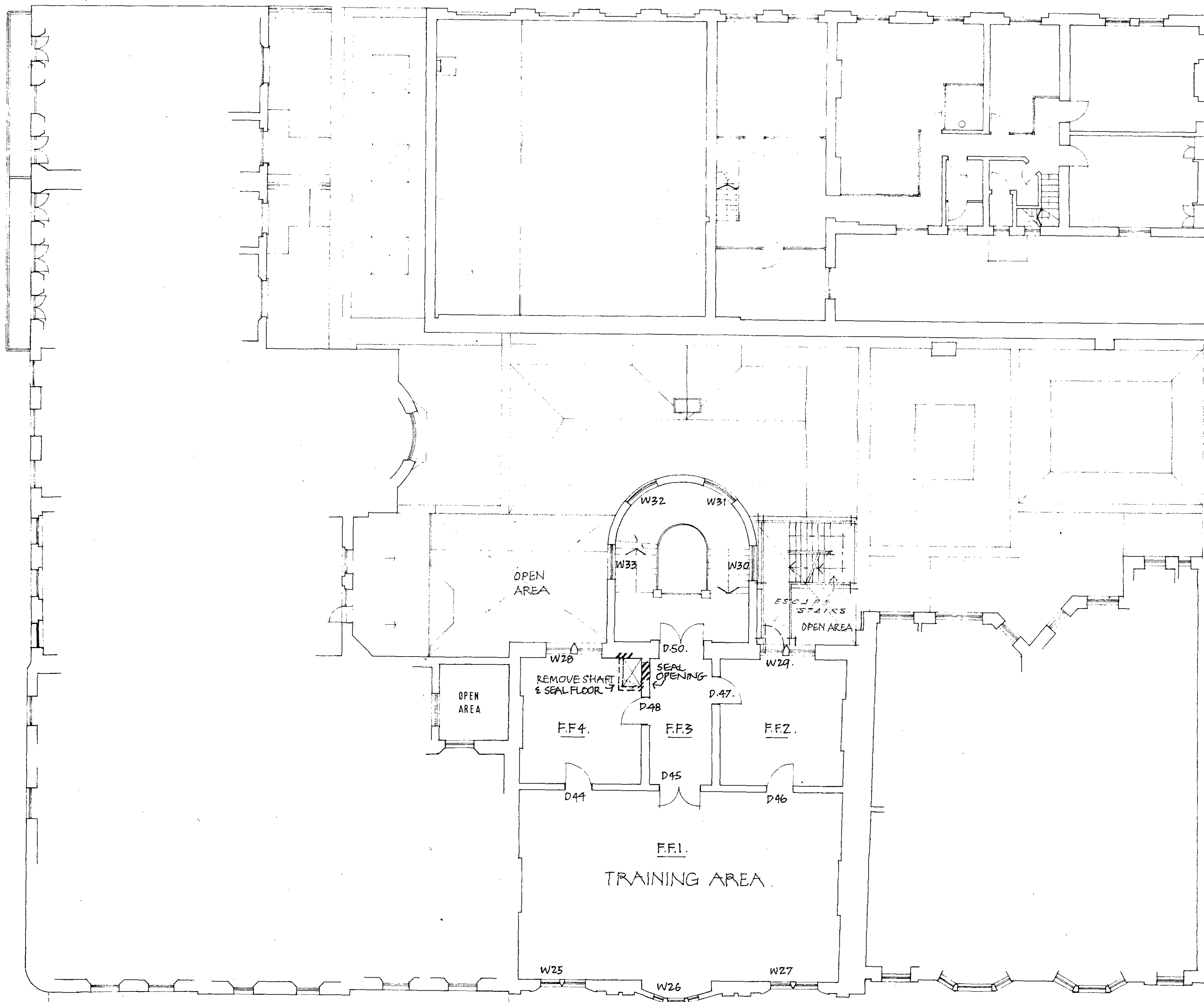
contract title	drawing title	scale
2/3 BLOOMSBURY SQ.	THIRD FLOOR	1/100
		date
		Jan 1979
		drawn
		revision
T P Bennett & Son Chartered Architects 282 High Holborn WC1V 7DU Telephone 01 405 9277	contract drawing number	©
	5296 SK 28	



LONDON BOROUGH OF CAMDEN  
 TOWN AND COUNTRY PLANNING ACTS  
 24 APR 1979  
 PLANS APPROVED  
 ON BEHALF OF THE COUNCIL

CTP/N14/23/E/27990

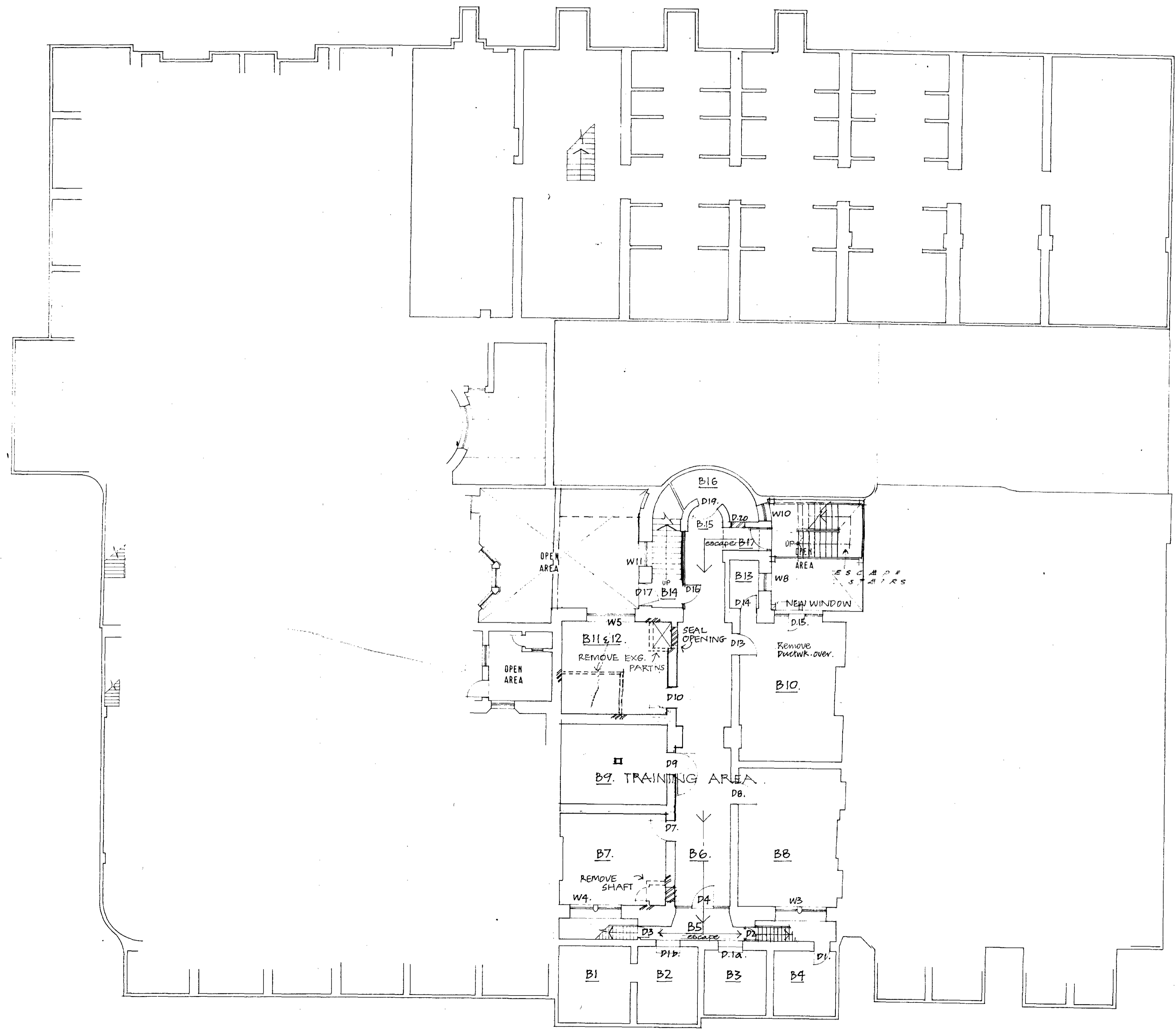
contract title	drawing title	scale
2/3 BLOOMSBURY SQ.	SECOND FLOOR	1/100
		date
		Jan 1979
		drawn
		revision
T P Bennett & Son Chartered Architects 282 High Holborn WC1V 7DU Telephone 01 405 9277	contract	drawing number
	5296	SK 27



LONDON BOROUGH OF CAMDEN  
 TOWN AND COUNTRY PLANNING ACT 19  
 24 APR 1979  
 PLANS APPROVED  
 ON BEHALF OF THE COUNCIL

CTP/N14/23/E/27990

contract title	drawing title	scale
2/3 BLOOMSBURY SQ.	FIRST FLOOR	1/100
		date
		Jan 1978
		drawn
		revision
T P Bennett & Son Chartered Architects 282 High Holborn WC1V 7DU Telephone 01 405 9277	contract drawing number	© revision
	5296 SK 26	



LONDON BOROUGH OF CAMDEN  
 TOWN AND COUNTRY PLANNING ACTS  
 24 APR 1979  
 PLANS  
 ON BEHALF OF THE COUNCIL

CTP/N14/23/E/27990

contract title	drawing title	scale
2/3 BLOOMSBURY SQ.	BASEMENT	1:50
contract	drawing number	revision
F P Bennett & Son Chartered Architects 262 High Holborn WC1V 7DU Telephone 01 405 9277	5296 SK 24	

Barter street

Southampton place

entrance N° 20

entrance N° 21

entrance N° 22

entrance N° 23

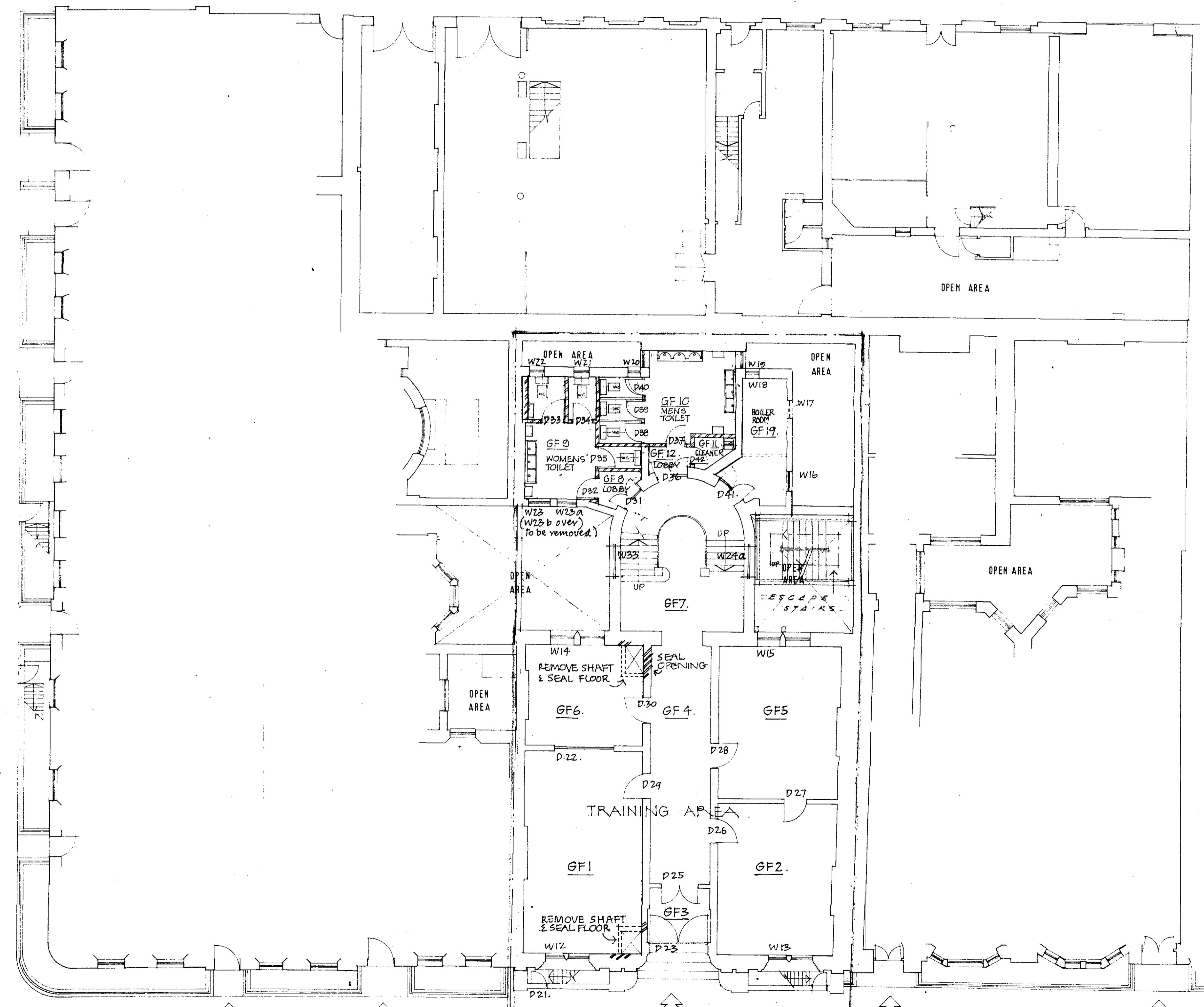
entrance N° 46 / 47

entrance N° 1

entrance N° 2/3

entrance N° 4

entrance N° 4A



NOTE: BROKEN LINE INDICATES THE EXTENT OF THE PROPERTY INCLUDED IN THE CONTRACT

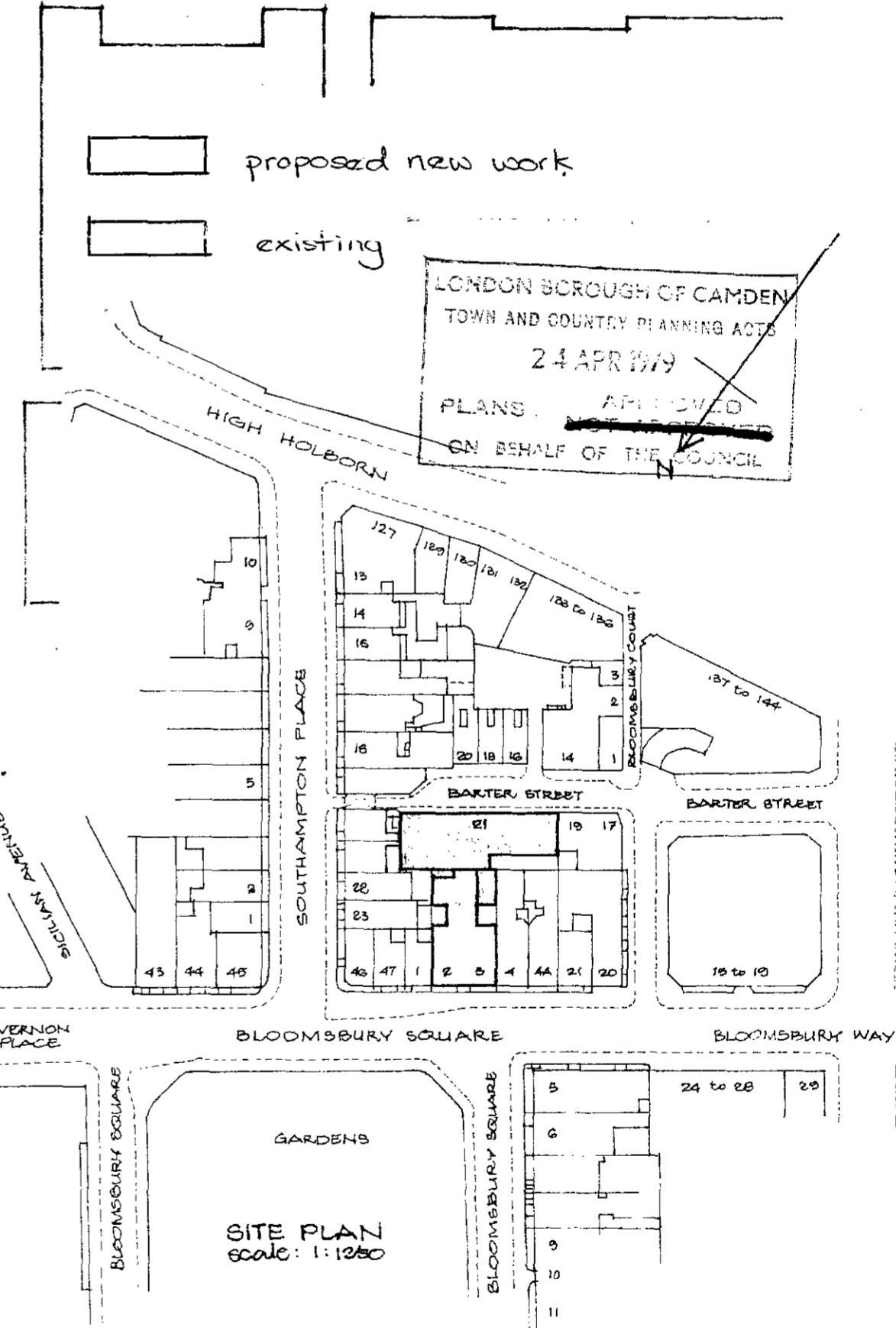
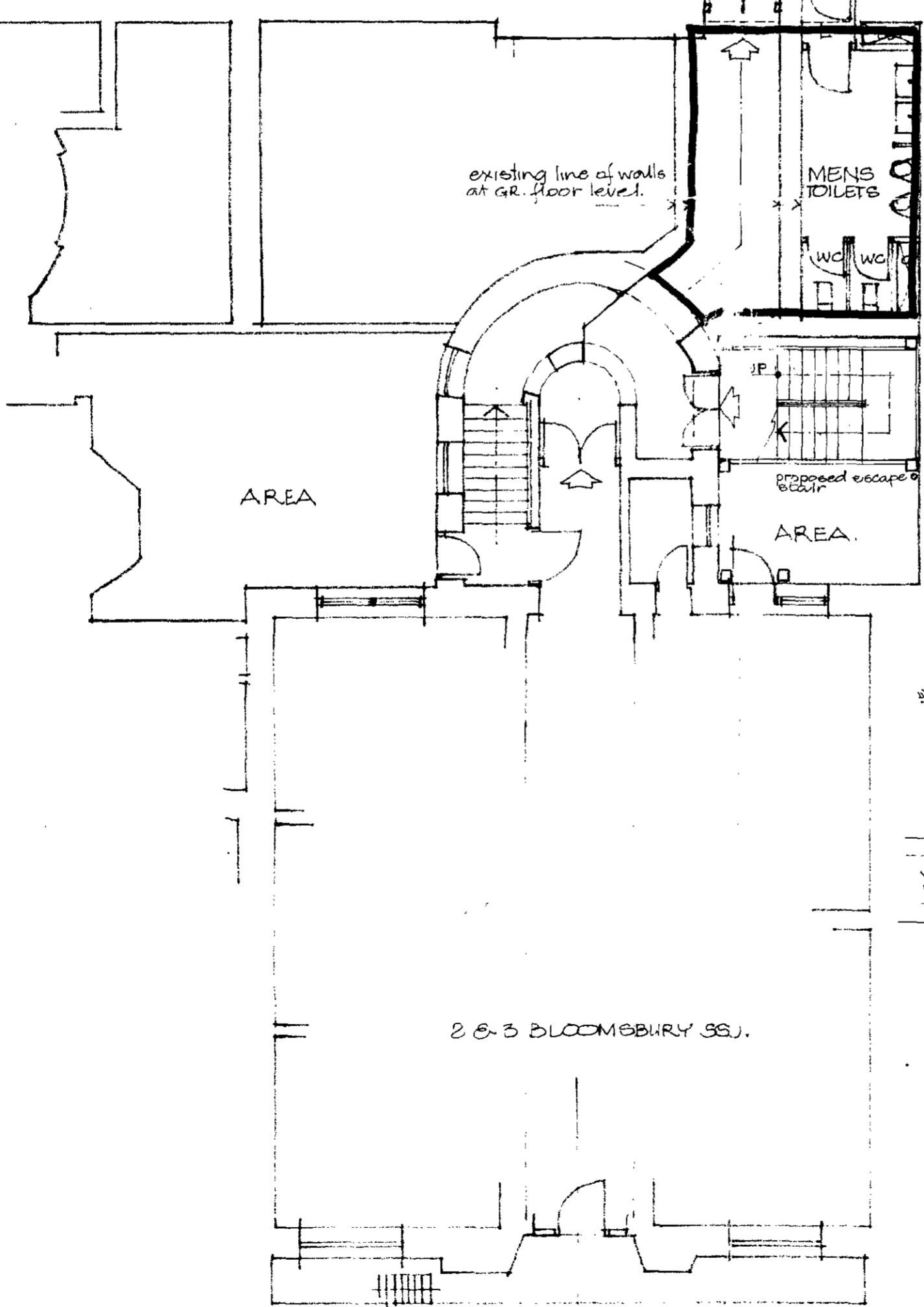
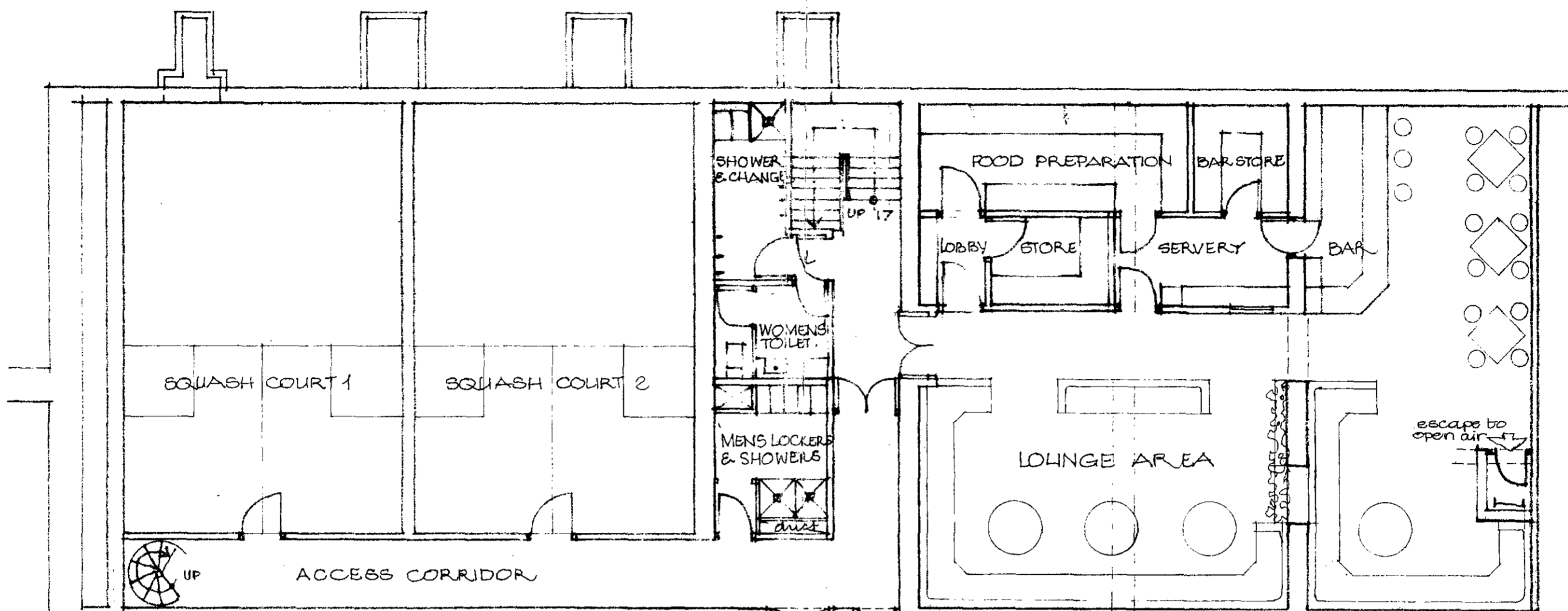
Bloomsbury square

LONDON BOROUGH OF CAMDEN  
 TOWN AND COUNTRY PLANNING ACTS  
 24 APR 1979  
 PLANS APPROVED  
 ON BEHALF OF THE COUNCIL

CTP/N14/23/E/27990

contract title	drawing title	scale
2/3 BLOOMSBURY SQ.	GROUND FLOOR	1:100
T P Bennett & Son Chartered Architects 262 High Holborn WC1V 7DU Telephone 01 405 9277	contract number 5296 SK 25	date Jan 1979

Barter Street.



Bloomsbury Square

Rev. B. stair + toilets altered  
 Escape stair added in bl. sq. No. 25.11.79  
 Rev. A. Squash courts amended 21.12.78/10/79

contract title		drawing title		scale
PROPOSED REFURBISHMENT 21, BARTER STREET.		BASEMENT PLAN, SCHEME 2.		1:100
T P Bennett & Son Chartered Architects 262 High Holborn WC1V 7DU Telephone 01 405 9277		contract	drawing number	date DEC. 1978
		5206 SK. 11.		drawn AdS
				revision B

27990/31  
 CTP/N14/23/E 27989  
 21/2/81



Barter Street

Barter Street  
ENTRANCE

UPPER PART OF  
SQUASH COURT 1

UPPER PART OF  
SQUASH COURT 2

ENT.  
LOBBY

ENTRANCE HALL

TRAINING AREA

TRAINING AREA

CORRIDOR - if required

STORE

LOBBY

escape from  
lounge area below

cat ladder

BOILER  
HOUSE

OPEN  
AREA

VIEWERS' GALLERY

OPEN AREA

AREA

WC

WC

WC

WC

MENS  
TOILET

BOILER  
HOUSE

WOMENS  
WC TOILET

LOBBY  
CLEANER

LINK CORRIDOR  
UP

proposed new work  
existing

OPEN AREA

OPEN AREA

LONDON BOROUGH OF CAMDEN  
TOWN AND COUNTRY PLANNING ACTS  
24 APR 1979  
PLANS APPROVED  
ON BEHALF OF THE COUNCIL

No. 1. BLOOMSBURY SQ.

2 & 3 BLOOMSBURY SQ.

Nos 4-4A BLOOMSBURY SQ.

27990

CTP/N14/23/E/279/89  
24/2/89

Bloomsbury Square

contract title		drawing title		scale
PROPOSED REFURBISHMENT/ 21, BARTER STREET		'GROUND FLOOR PLAN/ 'SCHEME 2		1:100
T P Bennett & Son Chartered Architects 262 High Holborn WC1V 7DU Telephone 01 405 9277		contract	drawing number	date FEB. 1979
		5296	SK 23	drawn A.S.G.
				revision