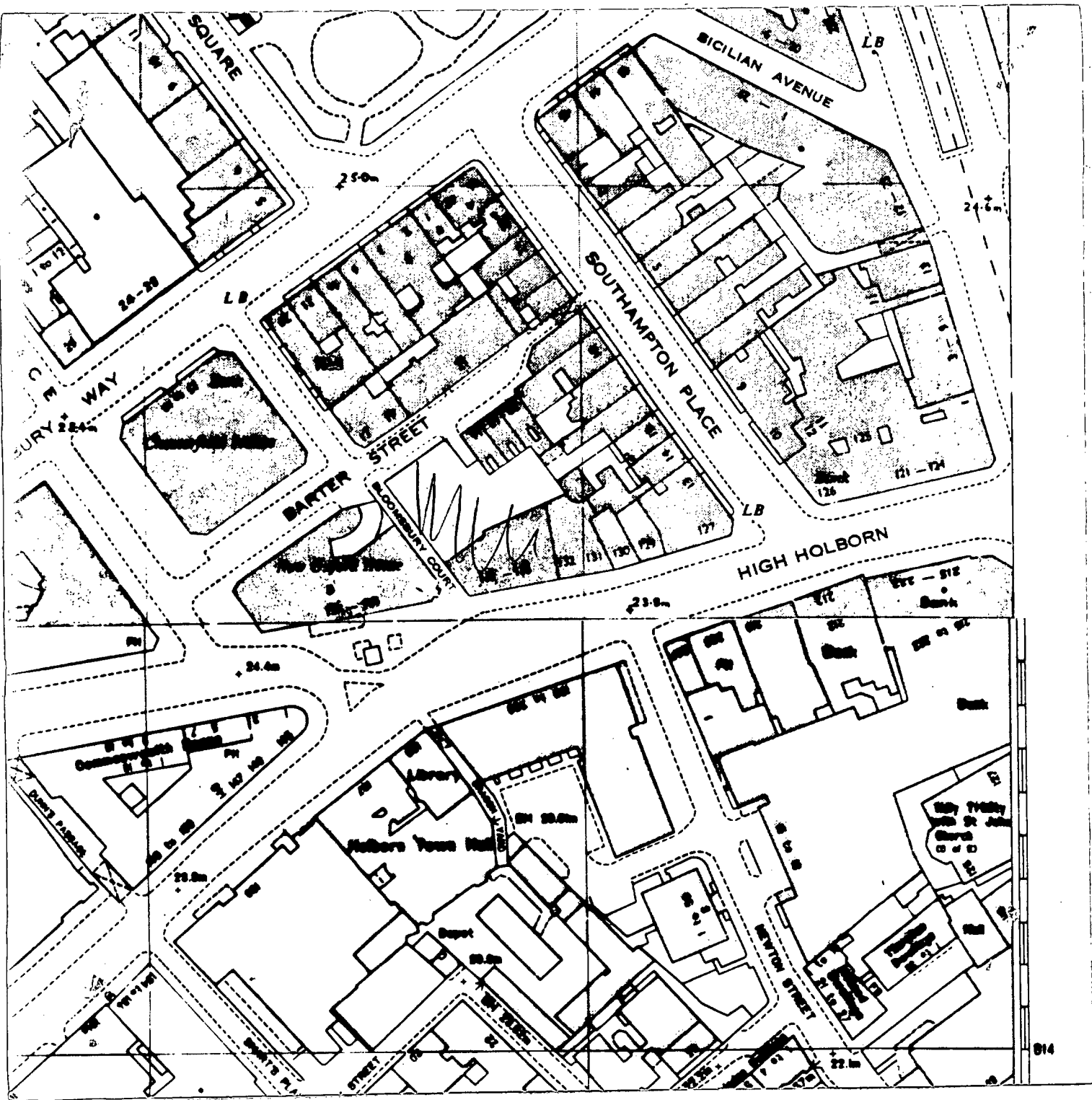


8+



LONDON BOROUGH OF CAMDEN

SITE PLAN

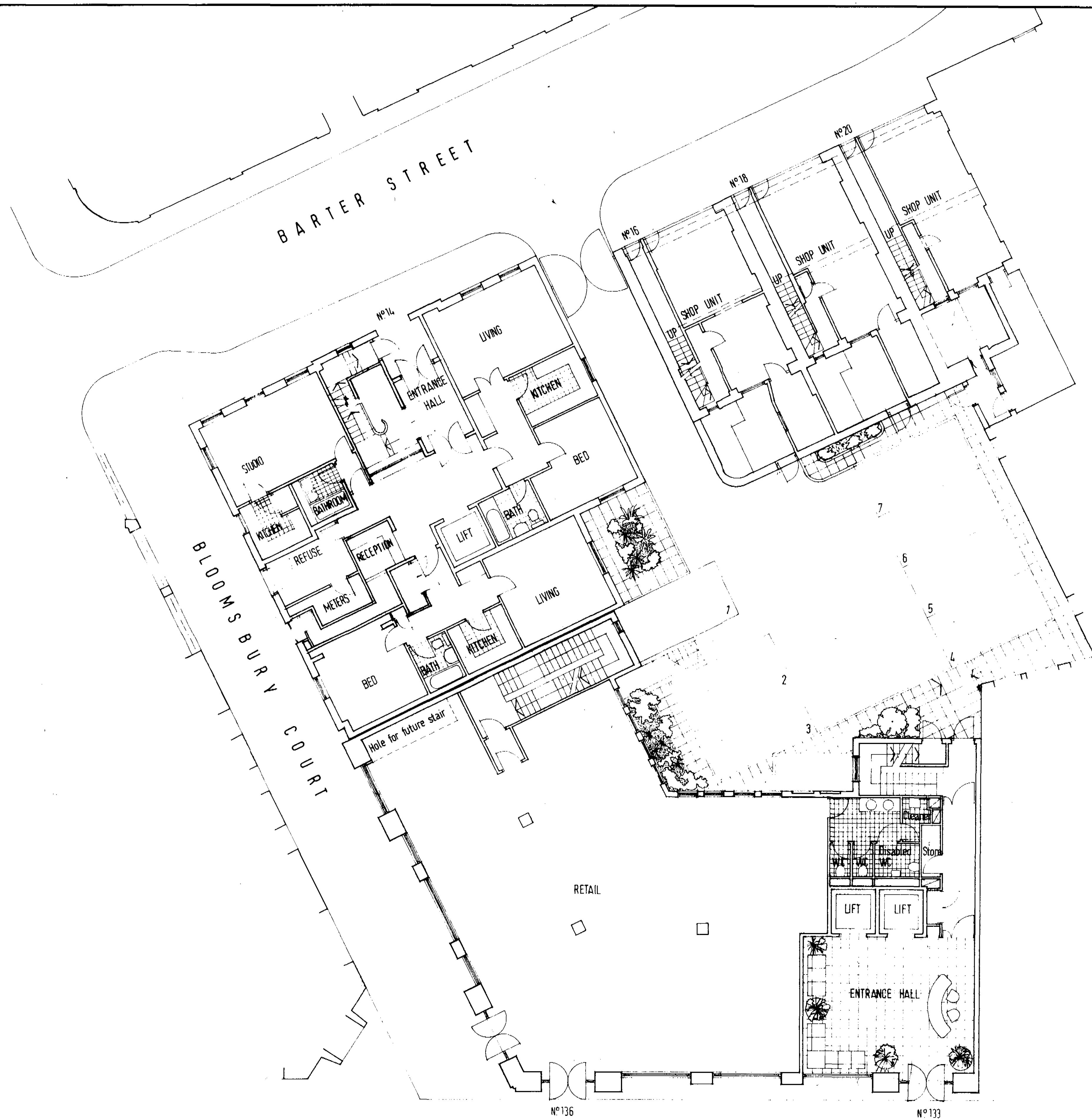
Address

(outlined in black)

133-136 High Holborn, Bloomsbury Court,
16-20 Barter Street

Scale 1:1250

NOTES
 1. The Contractor must check and confirm dimensions.
 2. All discrepancies are to be reported to and resolved by the Architects before works are commenced.
 3. This drawing is not to be scaled.
 4. All work and materials to be in accordance with the London Building Acts and the London Construction Bylaws or the Building Regulations and to comply with all relevant codes of practice and British Standards.



CC Residential studio flat up dated 16-7-88
 Entrance area updated
 N° 20 retail updated

ROLFE JUDD

DRAWN CHECKED - DATE

SCS

REVISIONS

No.	DATE	DESCRIPTION	CHECKED
A	4/8/90	Rev. Plan Updated	SCS
B	5/9/90	Rev. Plan Updated	SCS
C	2/1/91	Rev. Plan Updated	SCS

TP90003 68

LONDON BOROUGH OF CAMDEN
 PLANNING AND TRANSPORT DEPARTMENT
 - 7 AUG 1990
 RECEIVED

CLIENT
 D.O.B. ESTATES LTD
 JOB
 133-136 HIGH HOLBORN / BARTER STREET

LONDON BOROUGH OF CAMDEN
 PLANNING AND TRANSPORT DEPARTMENT
 13 DEC 1990
 PLANS APPROVED
 ON BEHALF OF THE COUNCIL

DRAWING
 GROUND FLOOR PLAN D-R
 SCHEME PL

ROLFE JUDD GROUP PRACTICE
 ARCHITECTS & TOWN PLANNERS

OLD CHURCH COURT CLAYLANDS ROAD THE OVAL
 LONDON SW8 5NZ 01-882 7070

SCALE 1:100

DATE JULY 1988

SIZE JOB DWG. REV.

DRAWING No. A1 / 1484 / 61 / C

HIGH HOLBORN