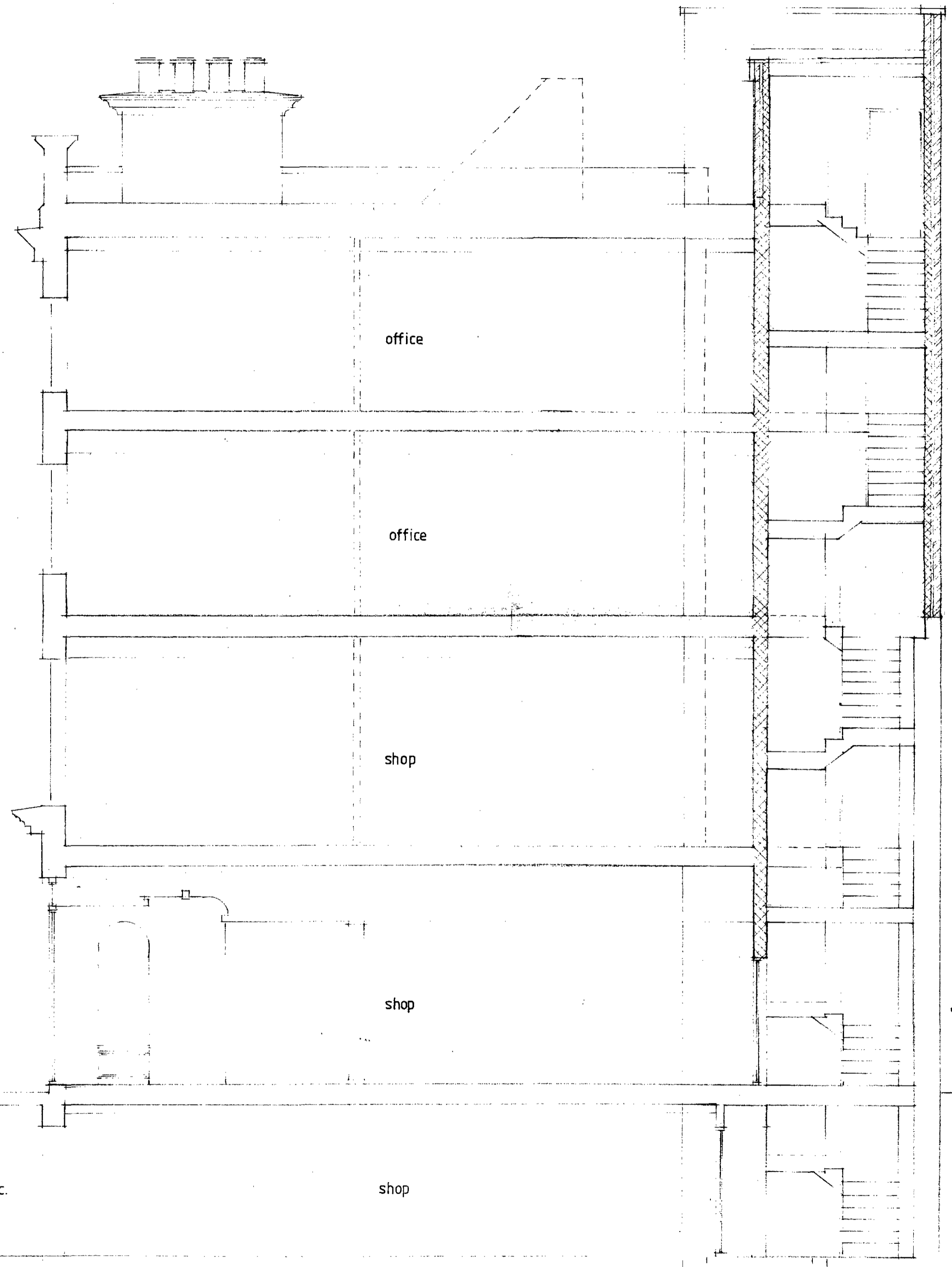


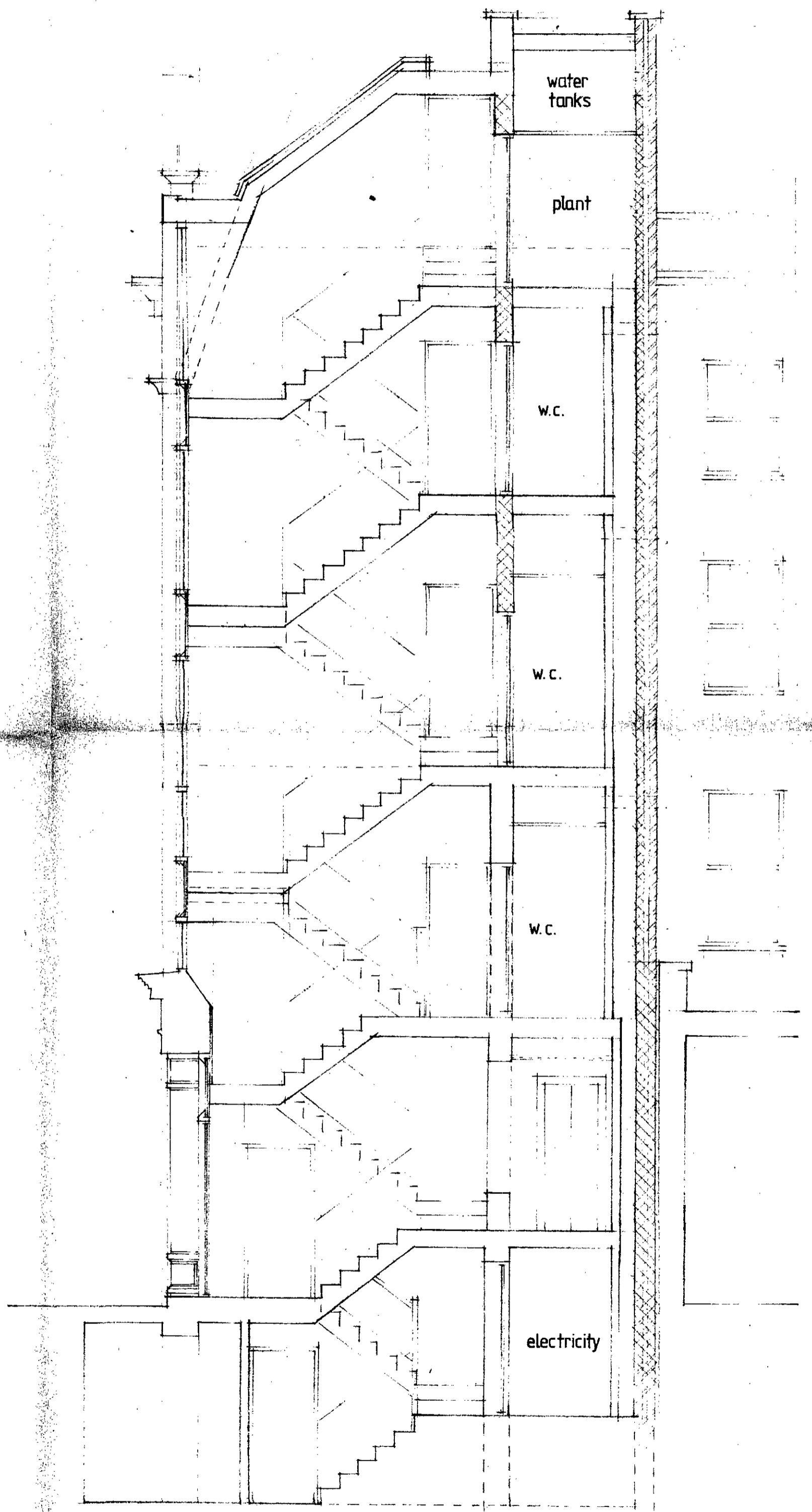
REV. A. TOP PART OF MANSARD ALTERED TO SLOPE BACK AT GREATER ANGLE TO REDUCE IMPACT TO STREET VIEW. 7.6.87 I. de P.

LONDON BOROUGH OF...
PLANNING AND CONSTRUCTION...
DEPARTMENT
15 JANUARY 1987
RECEIVED
ACK. FEB 1987

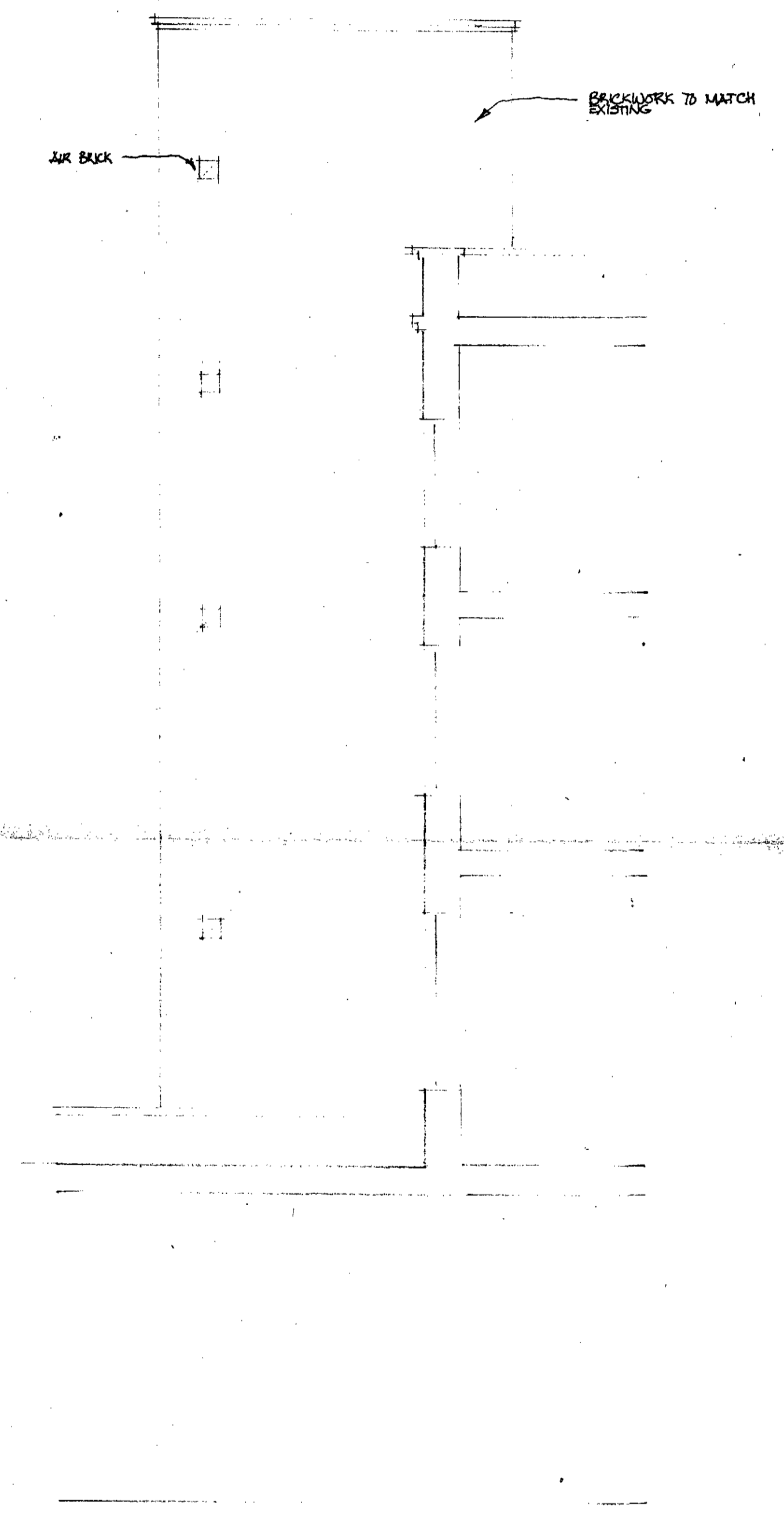
1TP8700478R1



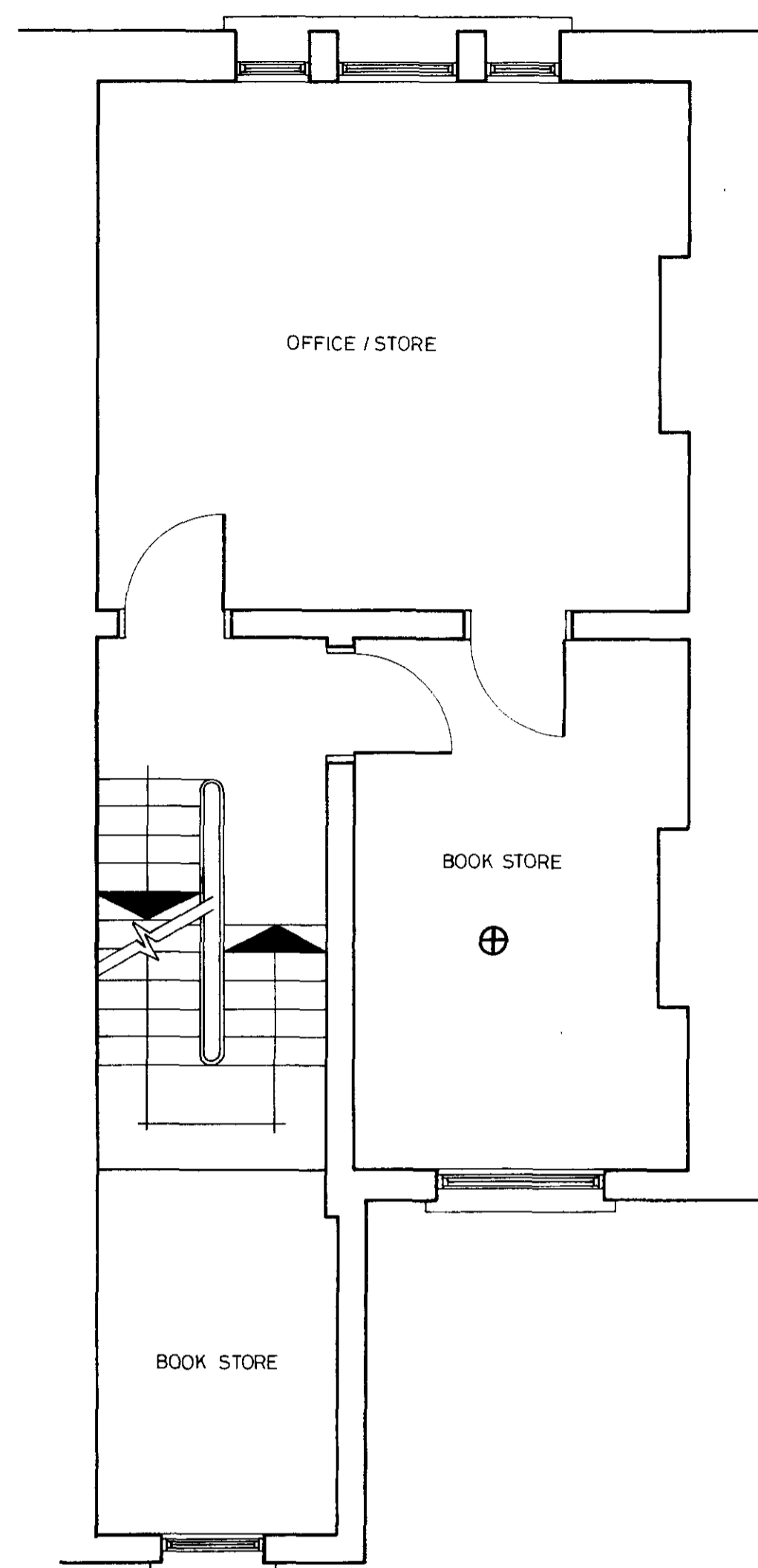
SECTION 1



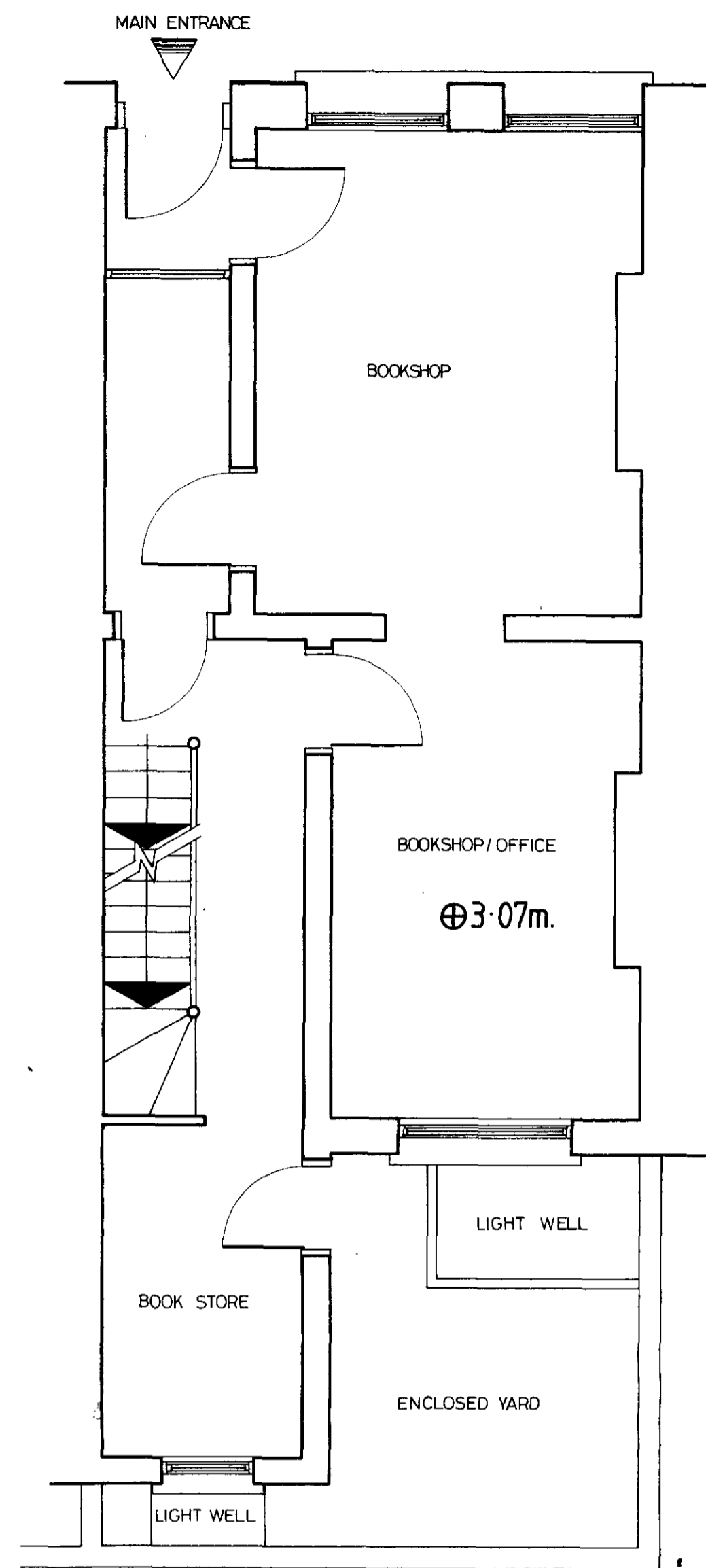
SECTION 2



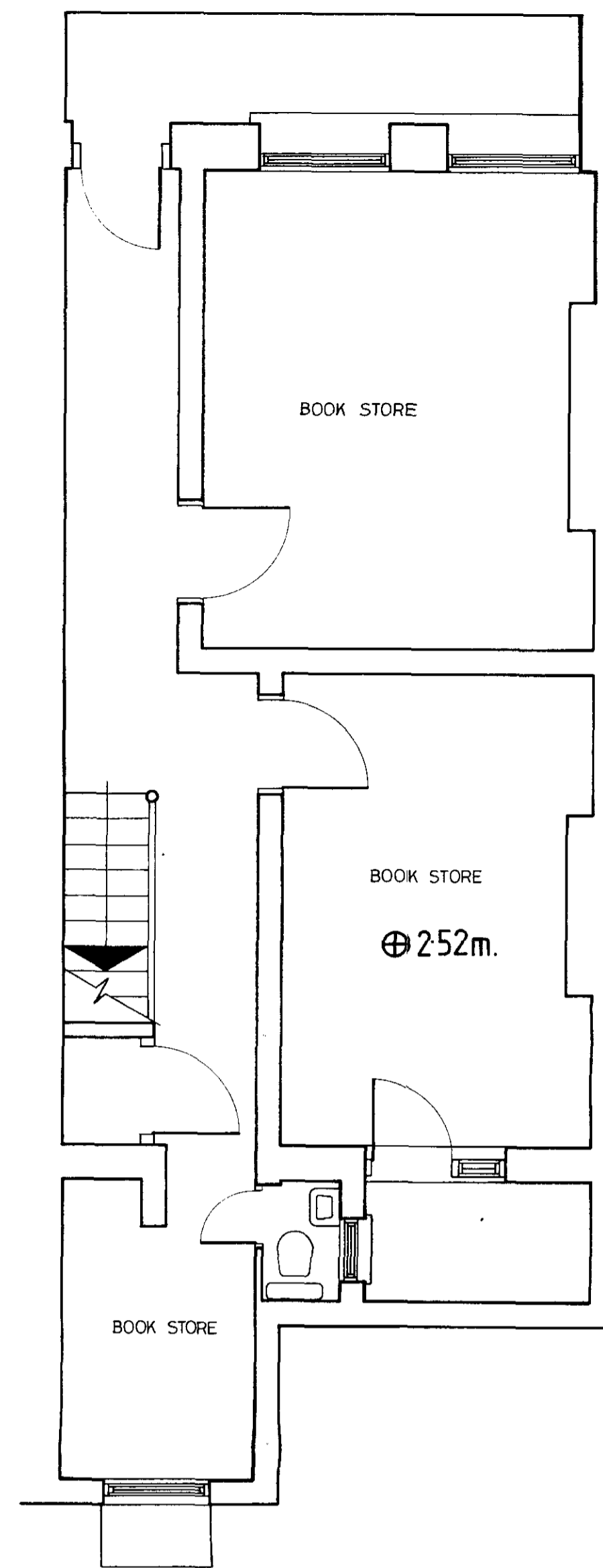
REAR ELEVATION



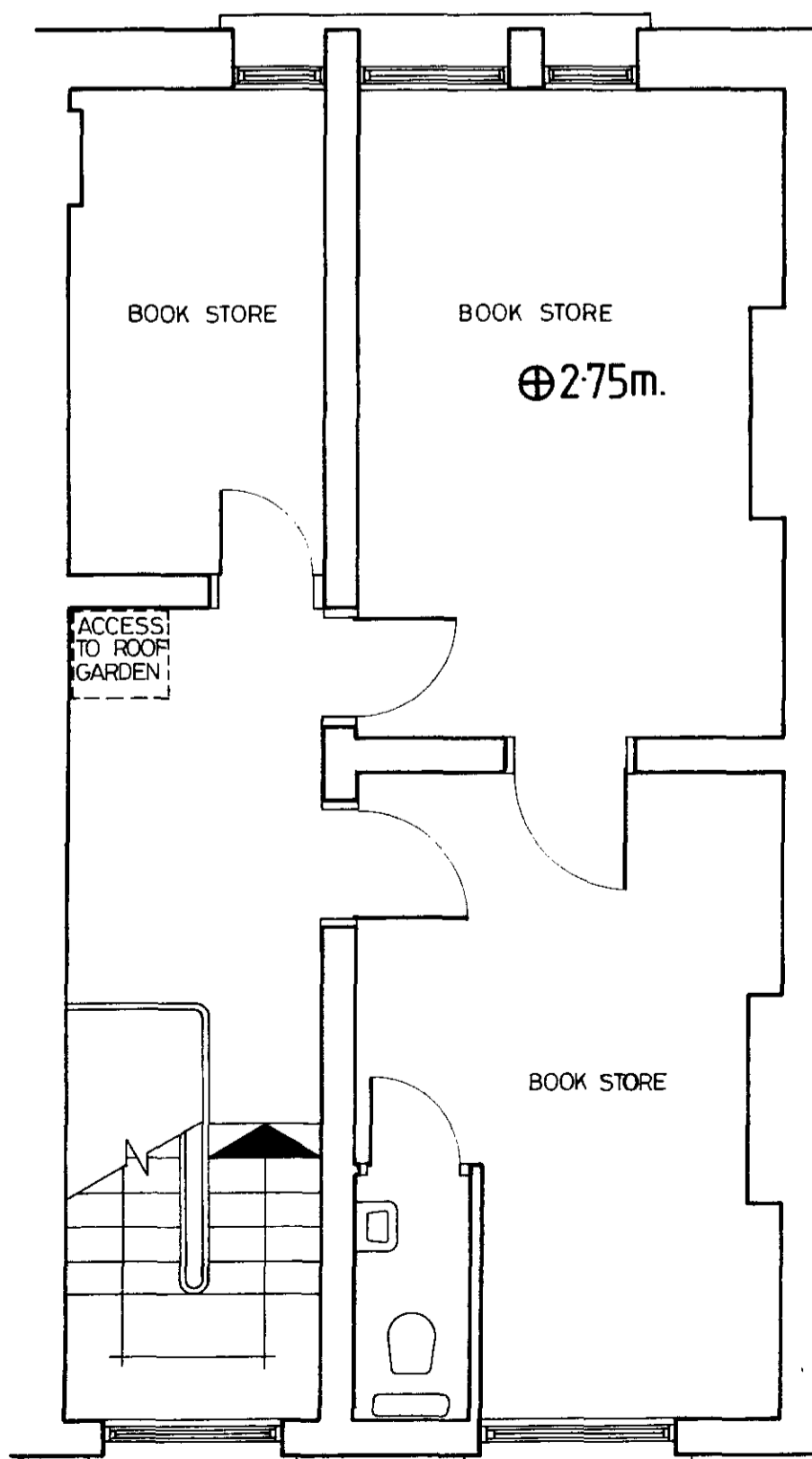
FIRST FLOOR



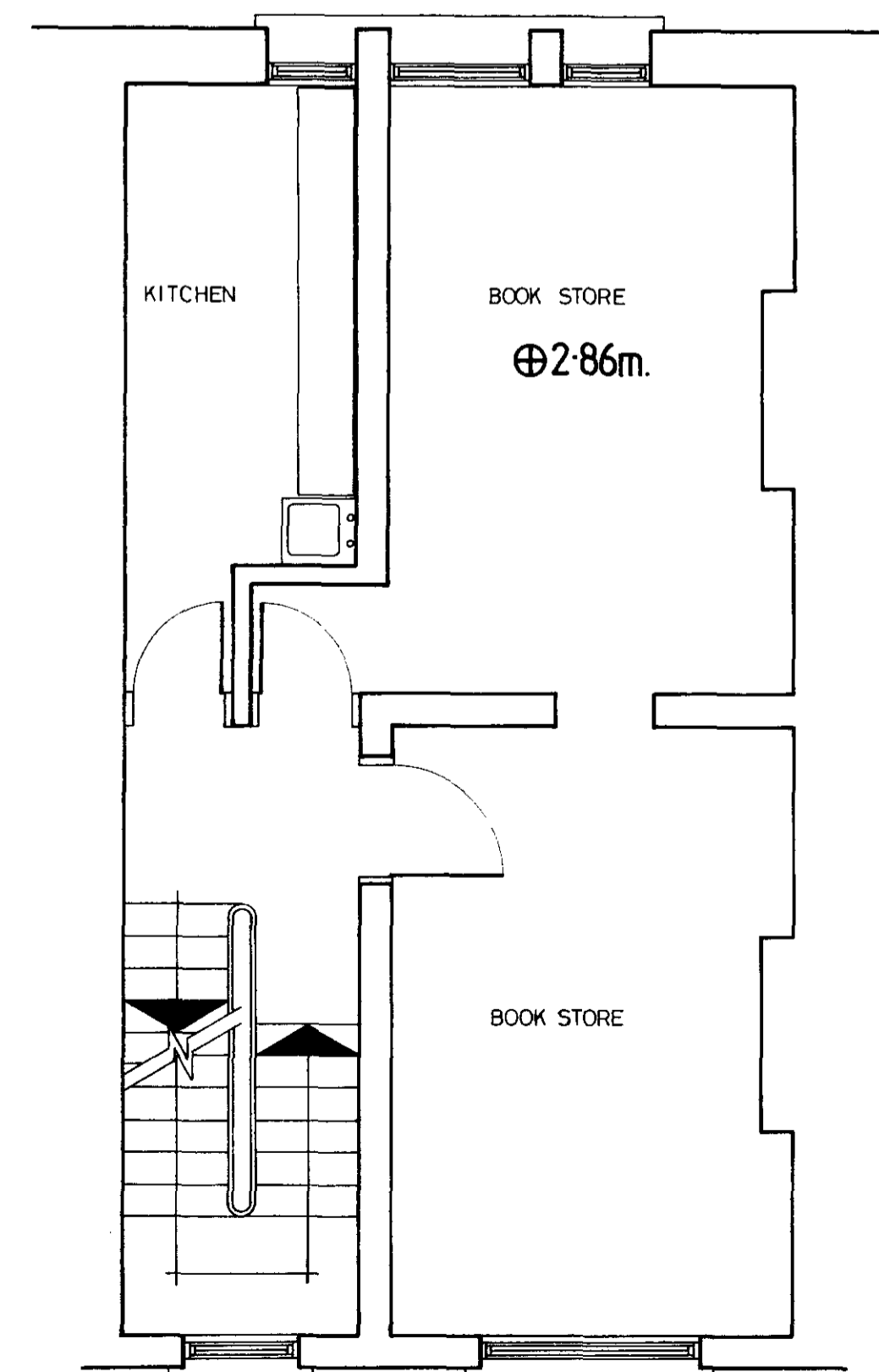
GROUND FLOOR



BASEMENT



THIRD FLOOR



SECOND FLOOR

NOTES

LONDON BOROUGH OF CAMDEN
 PLANNING AND COMMUNICATIONS
 DEPARTMENT
 11th Floor, 301
 TP.8.8 0.0127

RICHARD MAHER ASSOCIATES,
 ARCHITECTS & SPACE PLANNERS,
 191 CARLINGFORD ROAD,
 LONDON N15 3ET
 TEL: 01-881-4858

PROJECT: 41 GREAT RUSSELL STREET

DRAWING: EXISTING PLANS

DRG. No. 001

SCALE: 1:50

DATE: 30/8/87

DRAWN BY: R. J. M.