

SECTION 1-1

TP 8700489
HB 8770158

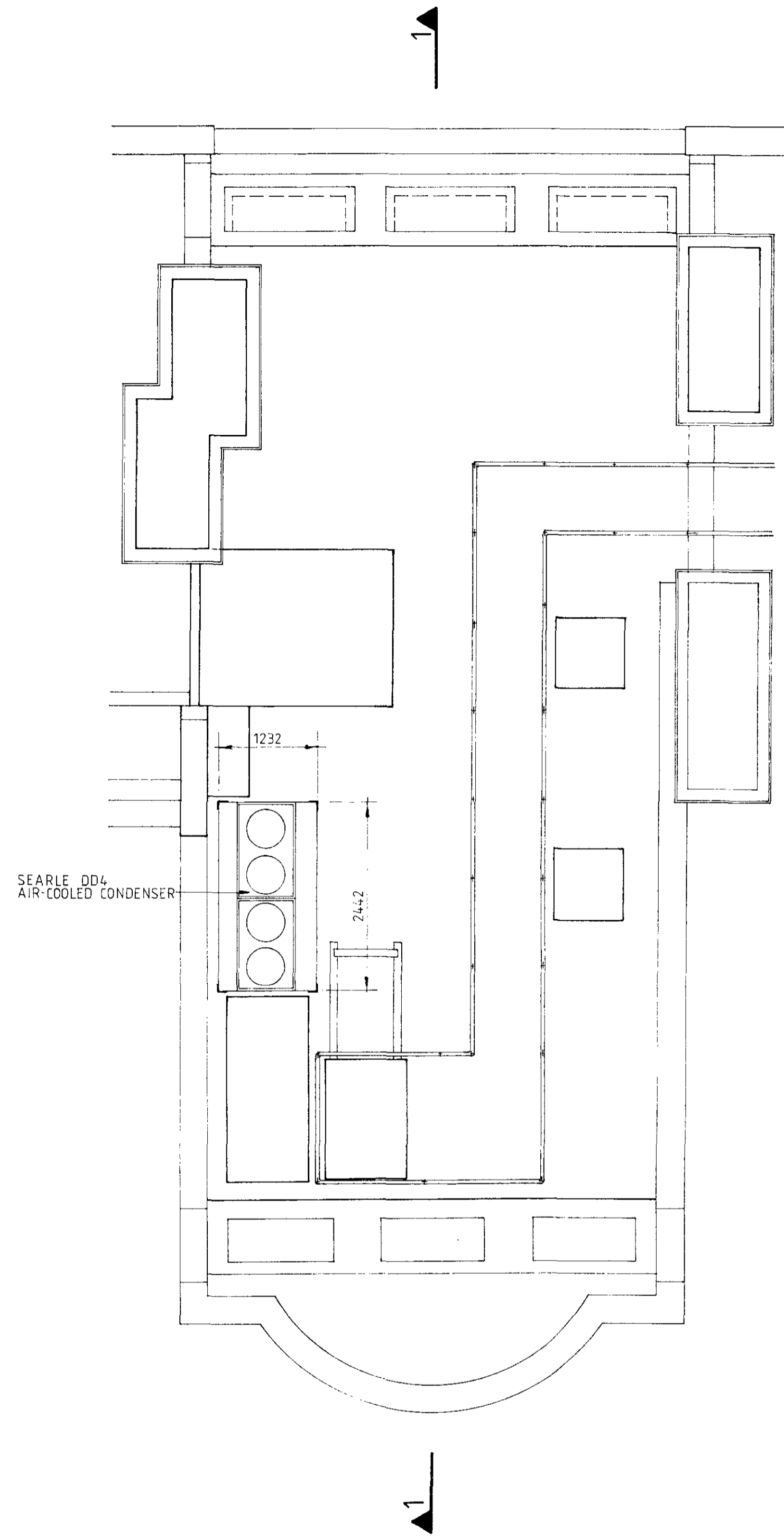
22 SOUTHAMPTON PLACE W.C.1.

AH Parker Limited

61-62 Watling Street London EC4M 9ES
01-236 5779 & 5770

factory
68-72 Redchurch Street London E2 7DP
01-739 4497

SCALE 1:50 DRAWN BY GMG
DATE Jan 87 REVISION
DRAWING N° AHP/800/4



ROOF PLAN



FRONT ELEVATION

REAR ELEVATION

TP 8700489
HB 8770158

22 SOUTHAMPTON PLACE W.C.1

AH Parker Limited

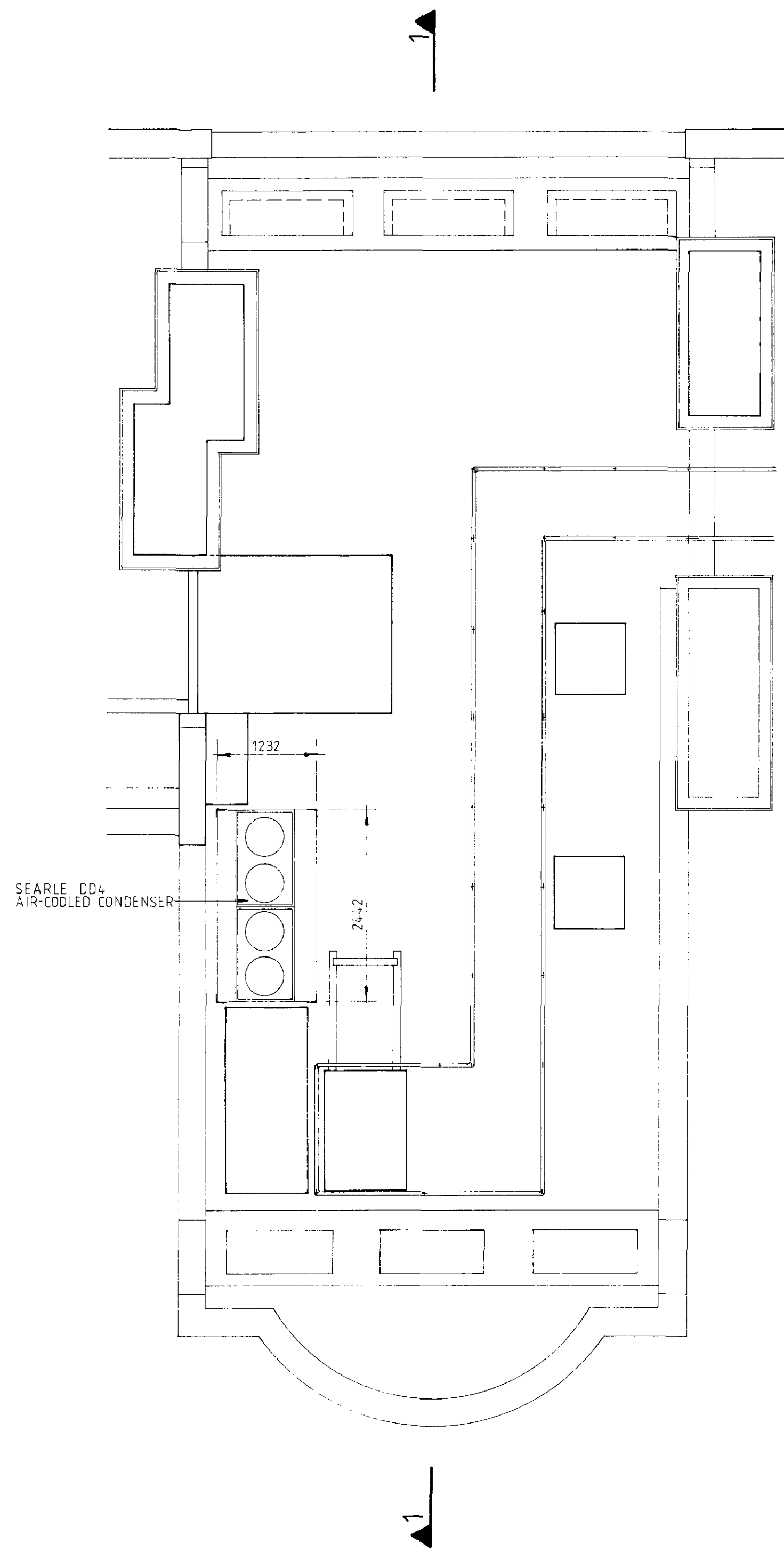
61-62 Watling Street London EC4M 9ES
01-236 5779 & 5770

factory
68-72 Redchurch Street London E2 7DP
01-739 4487

SCALE 1:50 DRAWN BY GMG

DATE Jan 87 REVISION

DRAWING N° AHP/800/3



ROOF PLAN



FRONT ELEVATION

REAR ELEVATION

TP 87 00489
HB 877 0158

22 SOUTHAMPTON PLACE W.C.1

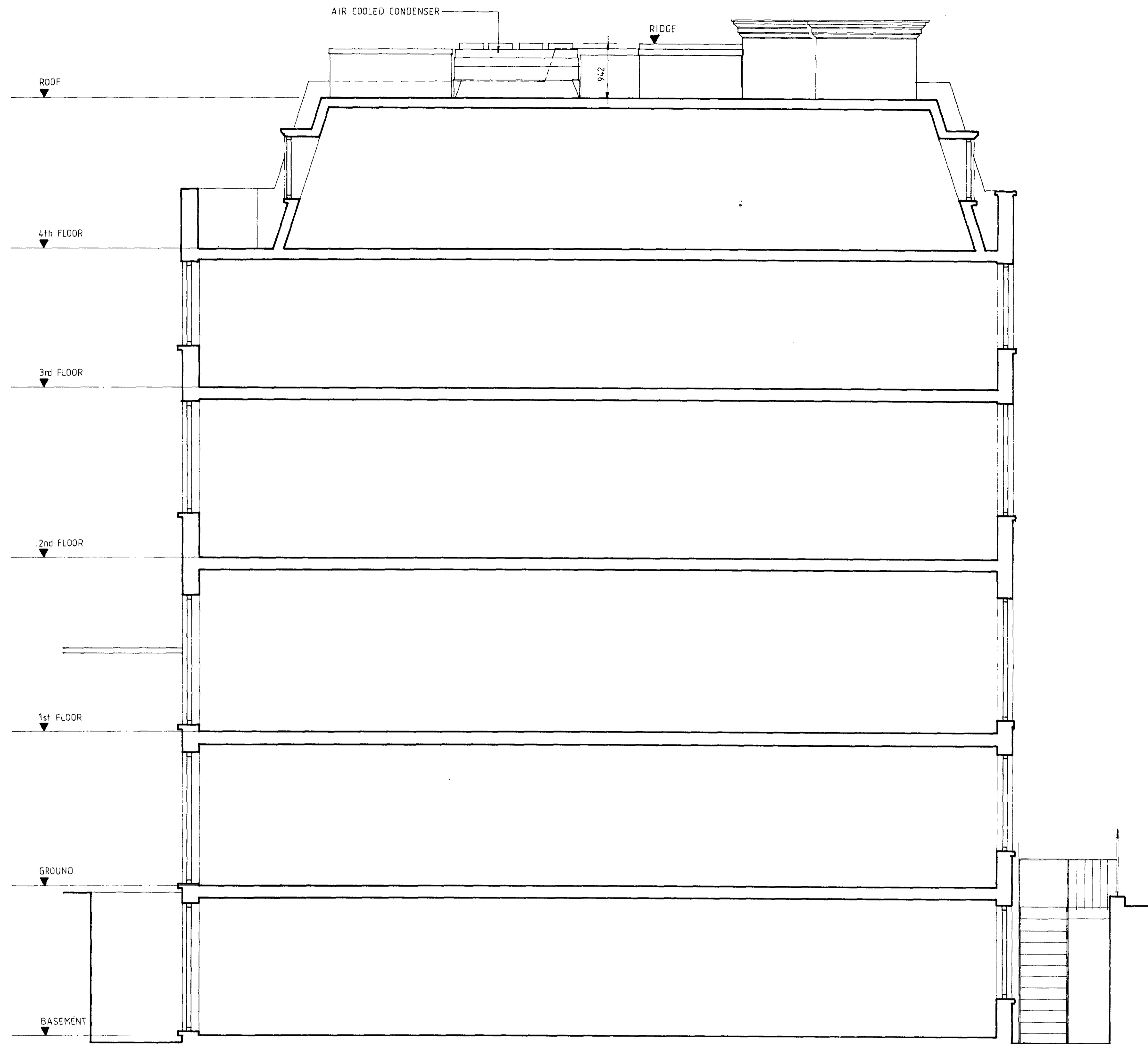
AH Parker Limited

61-62 Walling Street London EC4M 9ES
01-236 5779 & 5770

factory
68-72 Redchurch Street London E2 7DP
01-739 4497

SCALE 1:50 DRAWN BY GMG
DATE Jan 87 REVISION
DRAWING N° AHP/800/3

LONDON BOROUGH OF CAMELTON
TOWN AND COUNTRY PLANNING ACTS
21 AUG 1997
APPROVED
PLANS NOT APPROVED
ON BEHALF OF THE COUNCIL



SECTION 1-1

TP 87 00489
HB 877 0158

22 SOUTHAMPTON PLACE W.C.1.

AH Parker Limited

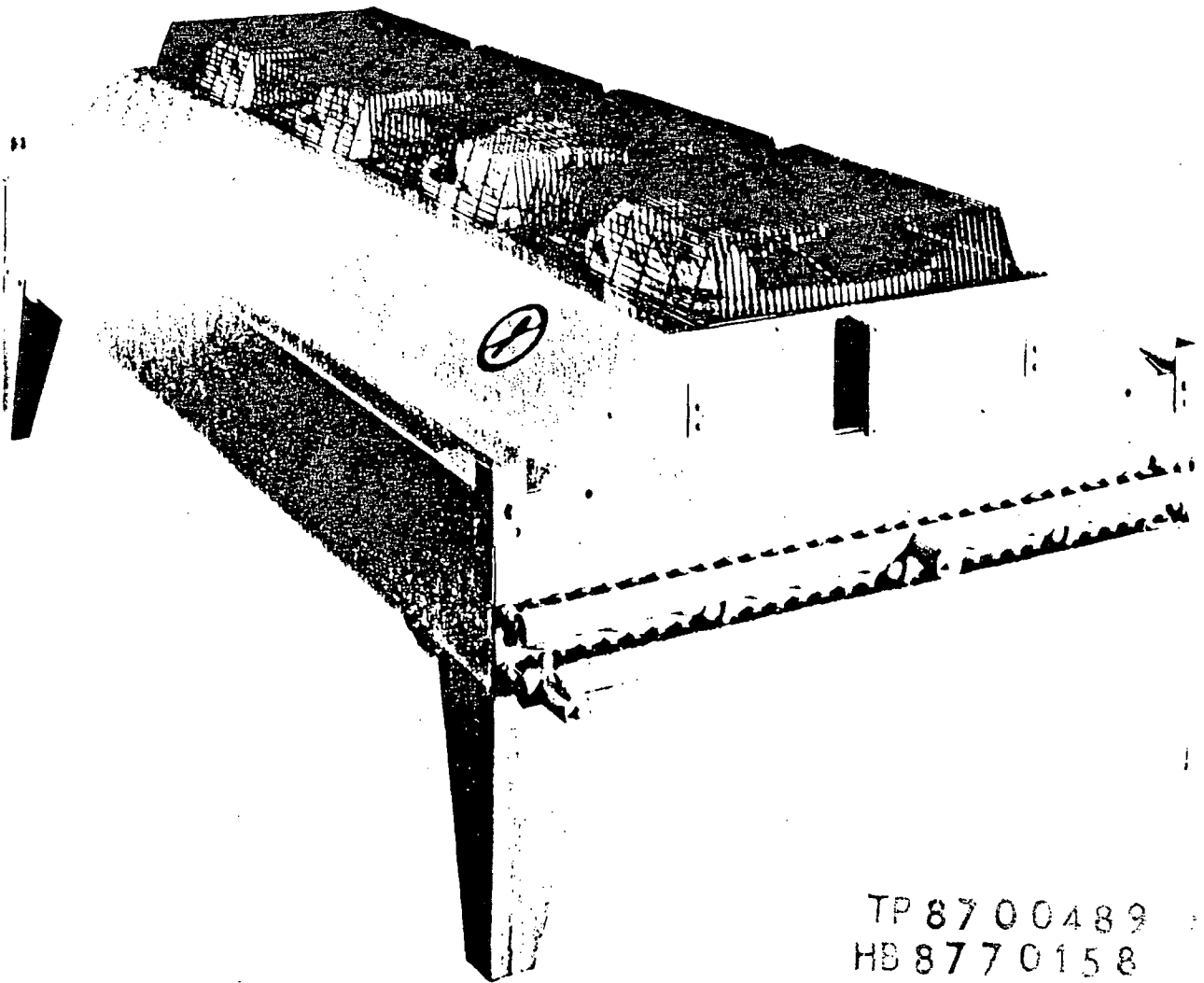
61-62 Watling Street London EC4M 9ES
01-238 6779 & 5770
factory
68-72 Redchurch Street London E2 7DP
01-739 4497
SCALE 1:50 DRAWN BY GMG
DATE Jan 87 REVISION
DRAWING N° AHP/800/4

LONDON BOROUGH OF CAMEEN
TOWN AND COUNTRY PLANNING ACTS
21 AUG 1997
APPROVED
PLANS NOT APPROVED
ON BEHALF OF THE COUNCIL

searle

82,000-651,000 Btu/h
24.6-194.3 kW
21,000-167,000 Kcal/h

DD4 Air-cooled Condensers



TP 87 00489
HS 8770158

A flexible range of standard direct driven condensers.

Offering

- * Motor speed options 460: 720: 960: 1420 r.p.m.
- * Refrigerant 12, 22, 502; Water and Glycol Dry Cooling Coils.
- * Multicircuiting and Sub-cooling options.
- * Energy saving Head Pressure and Motor speed control options.
- * Horizontal or Vertical airflow, Compressor Housings.
- * Aluminium, Vinyl coated, copper and electro-tinned fins.

LONDON BOROUGH OF CAMDEN
TOWN AND COUNTRY PLANNING ACTS
21 AUG 1997
PLANS ~~NOT APPROVED~~ APPROVED
ON BEHALF OF THE COUNCIL

Condenser selection procedure

A. Capacity Selection

MODEL	BASIC CAPACITY R22			
	Btu/h 30°FAT	kW 17°CAT	Kcal/h 17°CAT	
INDUSTRIAL 1420 r.p.m.	DD4-24	215,250	64.2	55,200
	DD4-34	322,850	96.3	82,850
	DD4-44	430,500	128.4	110,400
	DD4-54	547,600	160.6	138,050
	DD4-64	651,000	194.3	167,000
COMMERCIAL 960 r.p.m.	DD4-26	162,750	48.6	41,800
	DD4-36	244,150	72.8	62,650
	DD4-46	325,500	97.1	83,550
	DD4-56	406,900	121.5	104,350
	DD4-66	488,250	145.6	125,250
RESIDENTIAL 720 r.p.m.	DD4-28-LN	126,100	37.6	32,300
	DD4-38-LN	191,500	57.1	49,150
	DD4-48-LN	259,450	77.4	66,600
	DD4-58-LN	318,250	94.9	81,650
	DD4-68-LN	383,250	114.5	98,402
VERY LOW NOISE 460 r.p.m.	DD4-28-DS	82,650	24.6	21,150
	DD4-38-DS	124,300	37.0	31,850
	DD4-48-DS	165,500	49.3	42,400
	DD4-58-DS	206,850	61.6	52,950
	DD4-68-DS	248,850	73.9	63,500

TD°F	15	20	25	30	35	TD°C	10	12	15	17	20
Factor	0.5	0.67	0.84	1.0	1.17	Factor	0.59	0.71	0.88	1.0	1.18

Refrigerant Factors. R12 multiply by 0.95
R502 multiply by 0.97

B. Type of Application (Noise Requirements)

Units Available

Very Low Noise
460 rpm

Residential
720 rpm

Commercial
960 rpm

Industrial
1420 rpm

8-DS

8-LN

6

4

Free field sound pressure levels dB (2×10^{-5} N/M²) 10m radially horizontal from unit

MODEL	FREQUENCY BANDS								dBA	NC	NR
	63	125	250	500	1K	2K	4K	8K			
DD4-28-DS	42	39	37	32	28	20	15	10	33	27	28
VERY LOW NOISE											
DD4-28-LN	49	49	47	44	38	33	24	16	45	39	40
RESIDENTIAL											
DD4-26	54	55	56	52	47	37	27	25	53	48	49
COMMERCIAL											
DD4-24	62	65	67	62	56	49	35	32	63	60	60
INDUSTRIAL											

Correction Factors (Apply to frequency bands only).

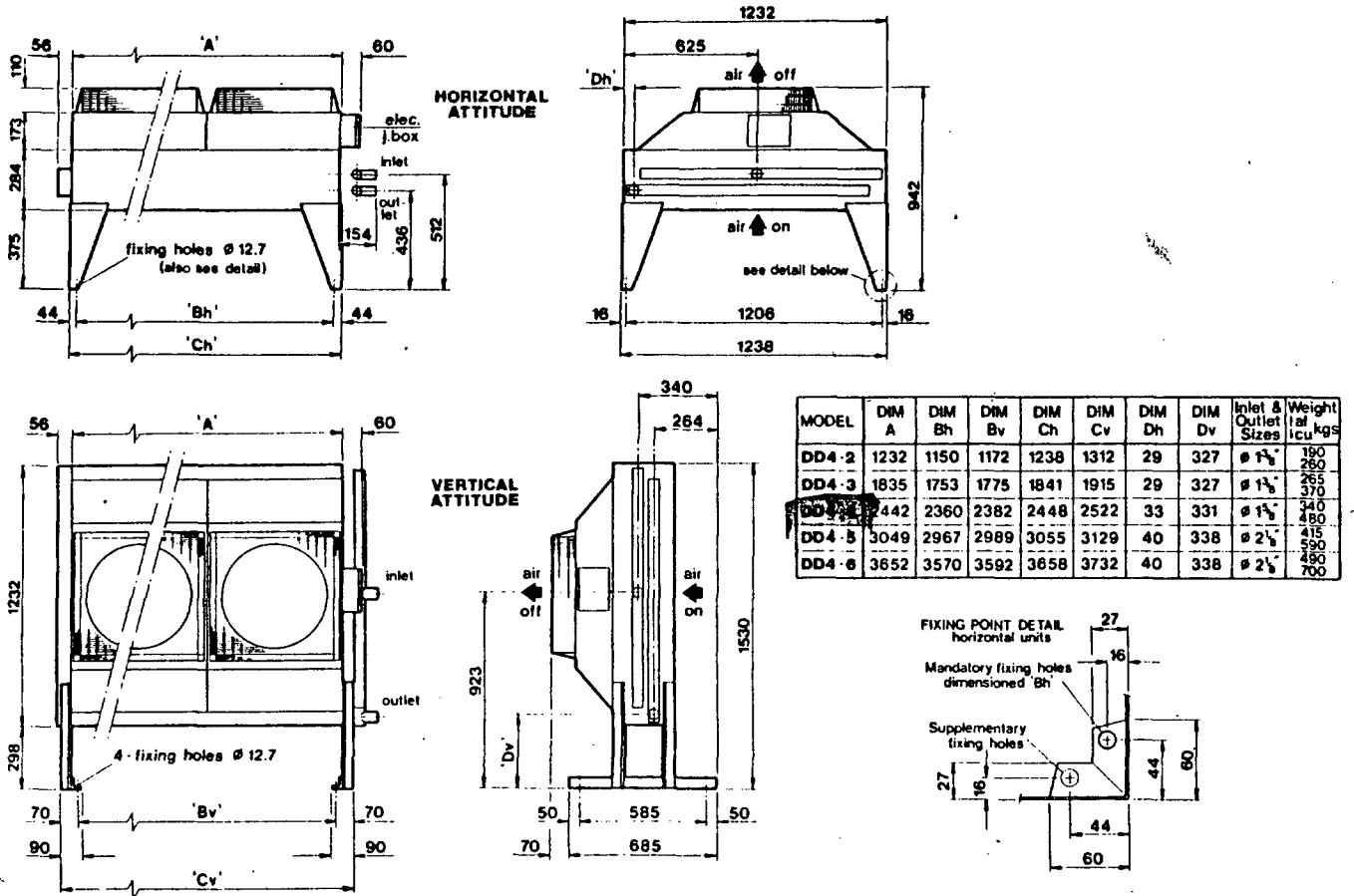
1) Number of fans
Variation in dB

2	3	4	5	6
0	+2	+3	+4	+5

2) Distance M
Variation in dB

10	20	40	80
0	-6	-12	-18

Dimensions



Technical data

MODEL	AIR VOLUME			No of Fans	Surface area		REFRIGERANT CHARGE Kg		MOTORS 380/420-3-50		
	C.F.M.	m ³ /s	m ³ /h		ft ²	m ²	R12	R22 & R502	POWER IN WATTS	Total FicAmps	Total LRCA
DD4-24	9,570	4.51	16,220	2	1500	140	8.7	7.8	550	3	13.8
DD4-34	14,350	6.77	24,340	3	2250	210	13.1	11.7	550	4.5	20.7
DD4-44	19,140	9.03	32,550	4	3000	280	17.5	15.7	550	6.0	27.6
DD4-54	23,920	11.28	40,660	5	3750	350	21.8	19.6	550	7.5	34.5
DD4-64	28,700	13.54	48,780	6	4500	420	26.2	23.5	550	9.0	41.4
DD4-26	6,450	3.05	10,920	2	1500	140	8.7	7.8	180	1.6	4.2
DD4-36	9,670	4.58	16,430	3	2250	210	13.1	11.7	180	2.4	6.3
DD4-46	12,900	6.08	21,940	4	3000	280	17.5	15.7	180	3.2	8.4
DD4-56	16,120	7.60	27,350	5	3750	350	21.8	19.6	180	4.0	10.5
DD4-66	19,340	9.13	32,860	6	4500	420	26.2	23.5	180	4.8	12.6
DD4-28-LN	4,420	2.08	7,490	2	1500	140	8.7	7.8	90	1.2	2.2
DD4-38-LN	6,630	3.12	11,230	3	2250	210	13.1	11.7	90	1.8	3.3
DD4-48-LN	8,840	4.16	14,980	4	3000	280	17.5	15.7	90	2.4	4.4
DD4-58-LN	11,050	5.20	18,720	5	3750	350	21.8	19.6	90	3.0	5.5
DD4-68-LN	13,260	6.24	22,460	6	4500	420	26.2	23.5	90	3.6	6.6
DD4-28-DS	2,810	1.32	4,780	2	1500	140	8.7	7.8	90	0.90	-
DD4-38-DS	4,210	1.99	7,180	3	2250	210	13.1	11.7	90	1.35	-
DD4-48-DS	5,620	2.65	9,570	4	3000	280	17.5	15.7	90	1.80	-
DD4-58-DS	7,020	3.32	11,960	5	3750	350	21.8	19.6	90	2.25	-
DD4-68-DS	8,420	3.97	14,350	6	4500	420	26.2	23.5	90	2.70	-

The above values are typical currents and may vary depending on the type of motor used.