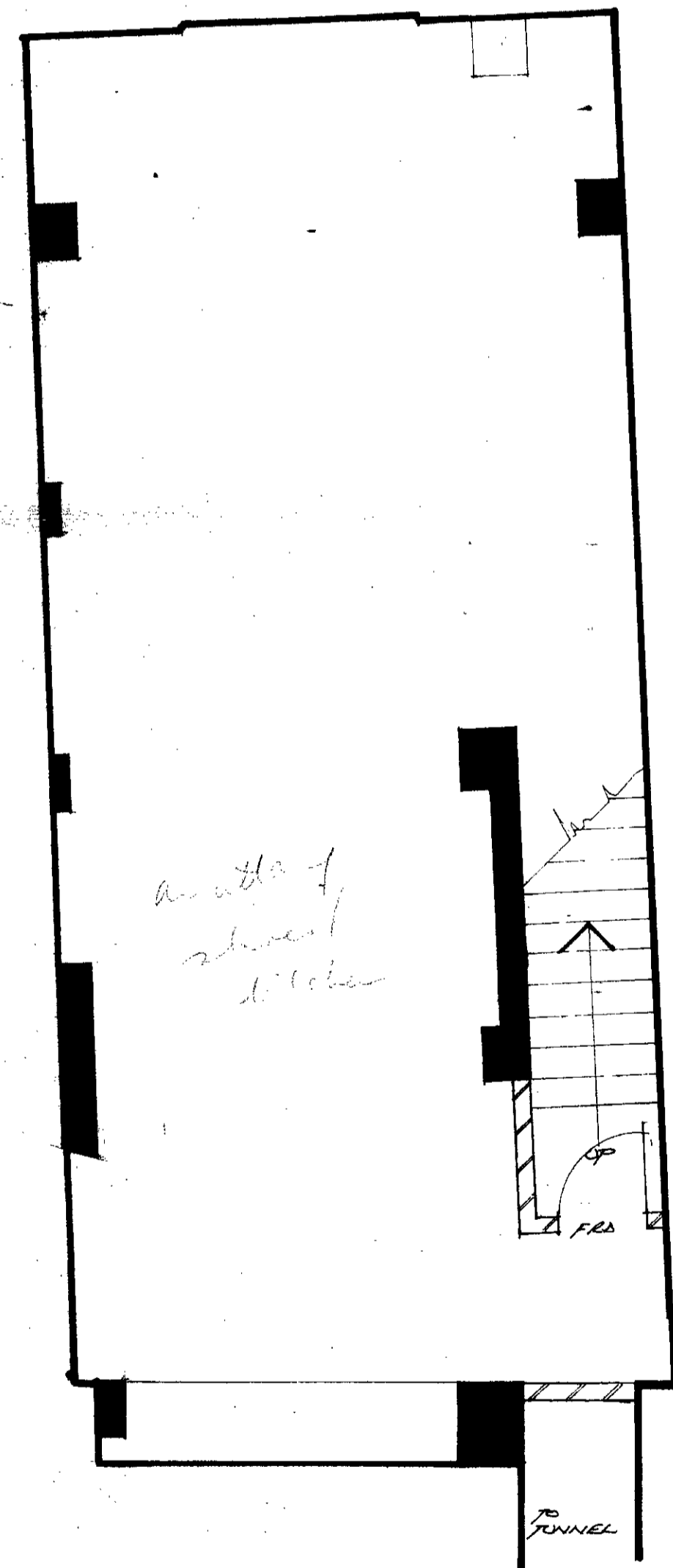


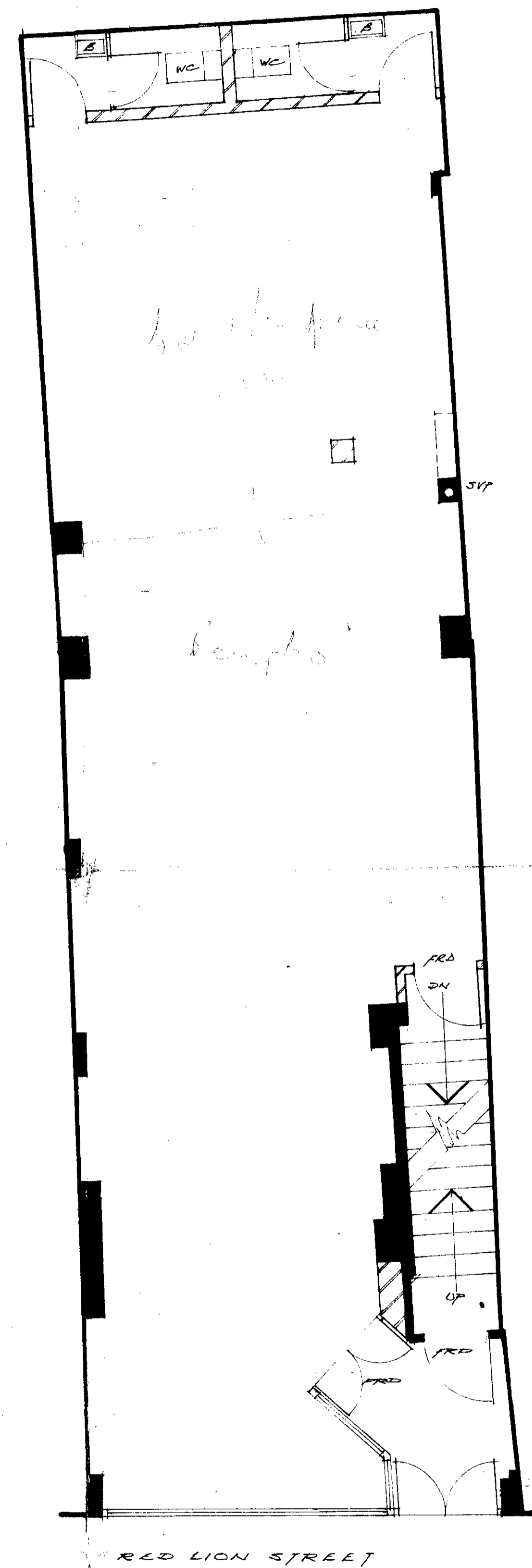
FRONT ELEVATION

GTP/NIS/13/A/4421

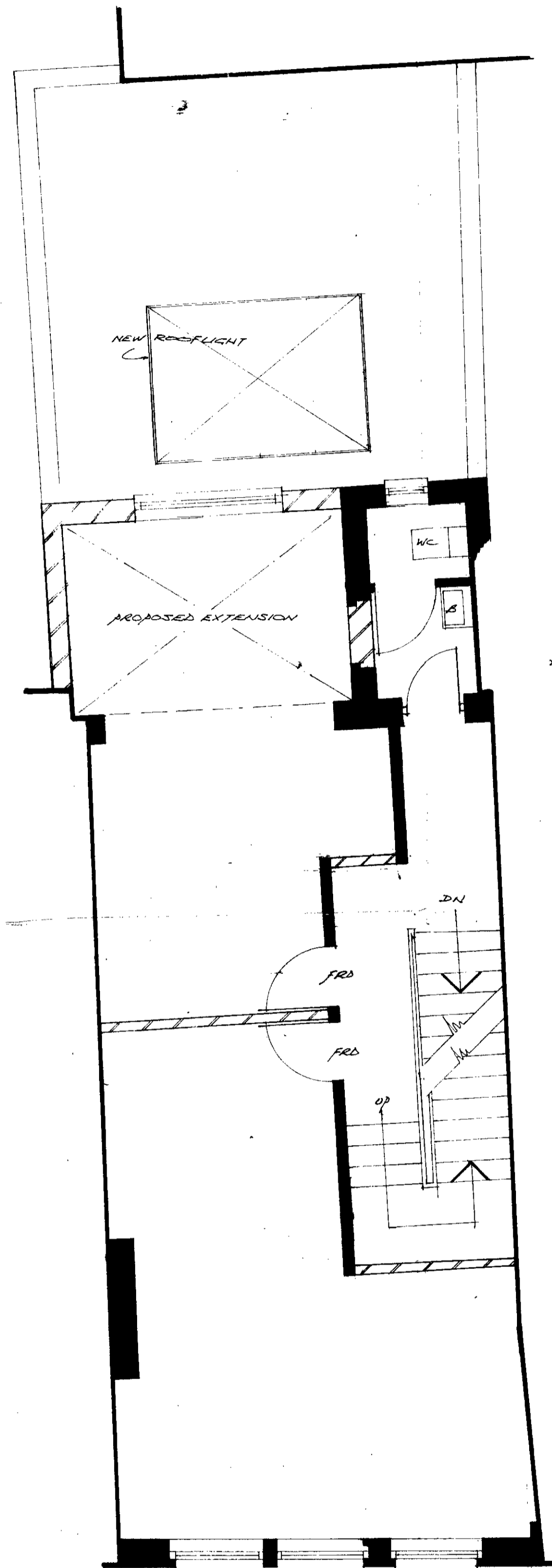
Revisions.	
Job. 48 RED LION STREET WC1 elevation as proposed.	
HASLEMERE ESTATES LTD., 4, Carlos Place, London, W1Y 5AE. 01-629-1105.	
Scale. 4 feet to 1 inch	DRG NO.
Date. august 1972	48 RLS/BJR/3
Drawn By. p.e.	
IF IN DOUBT - ASK	



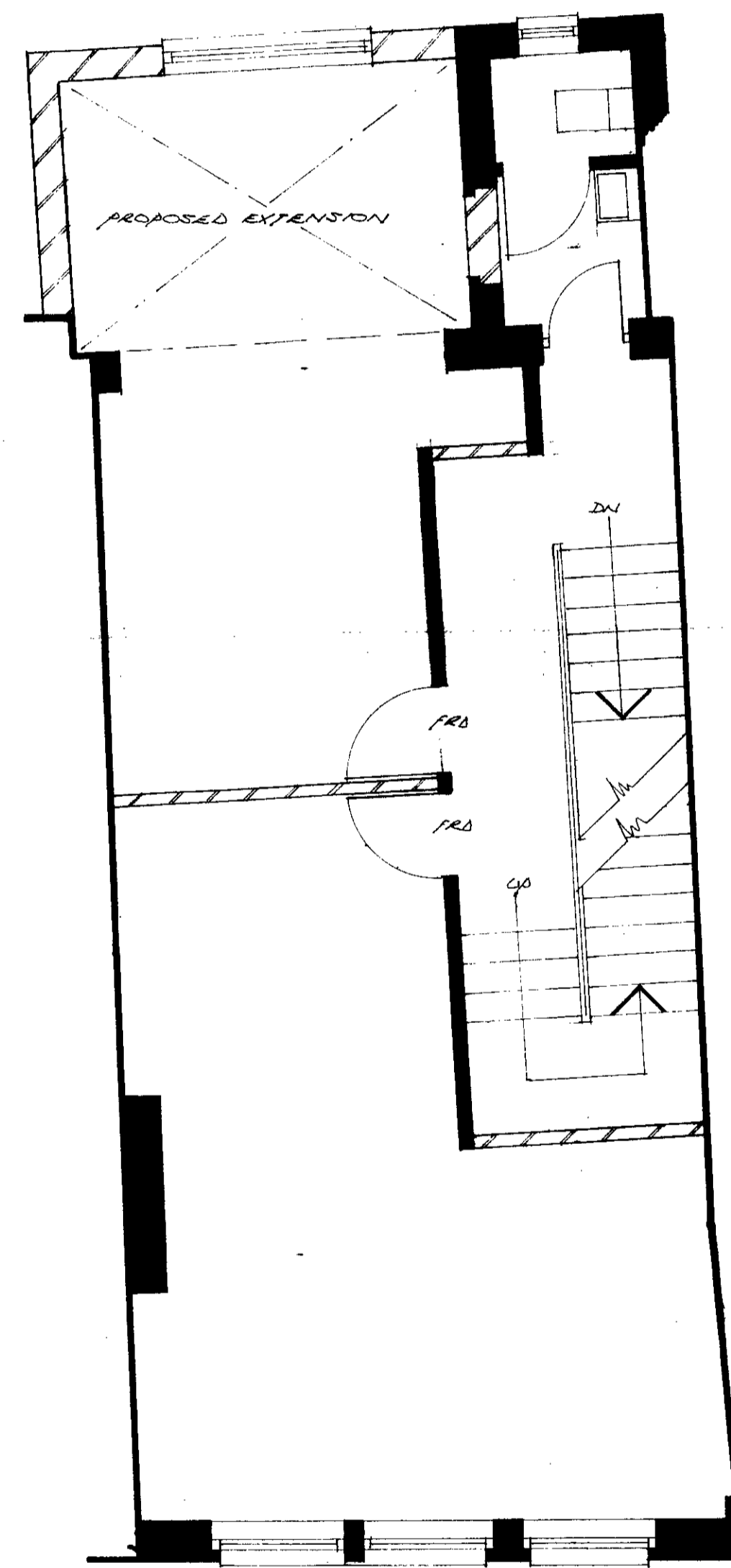
lower ground floor



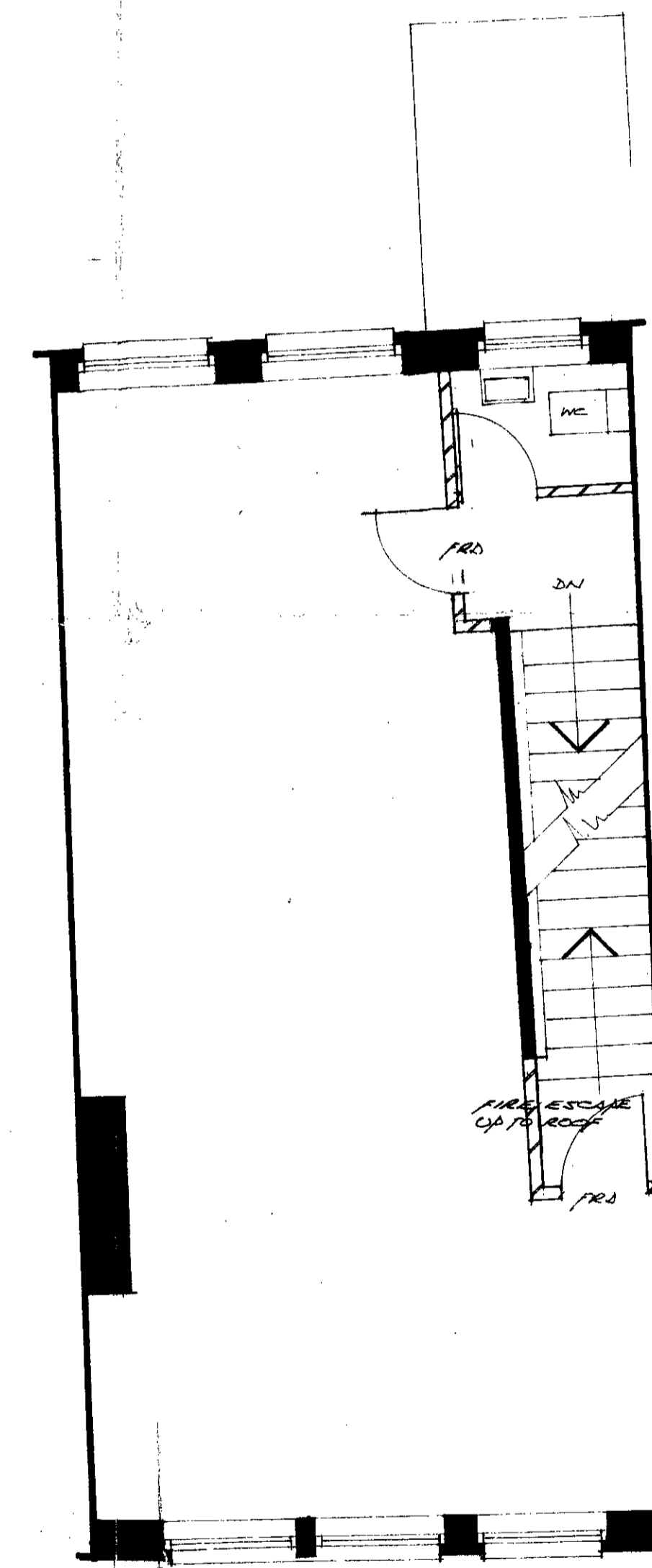
ground floor



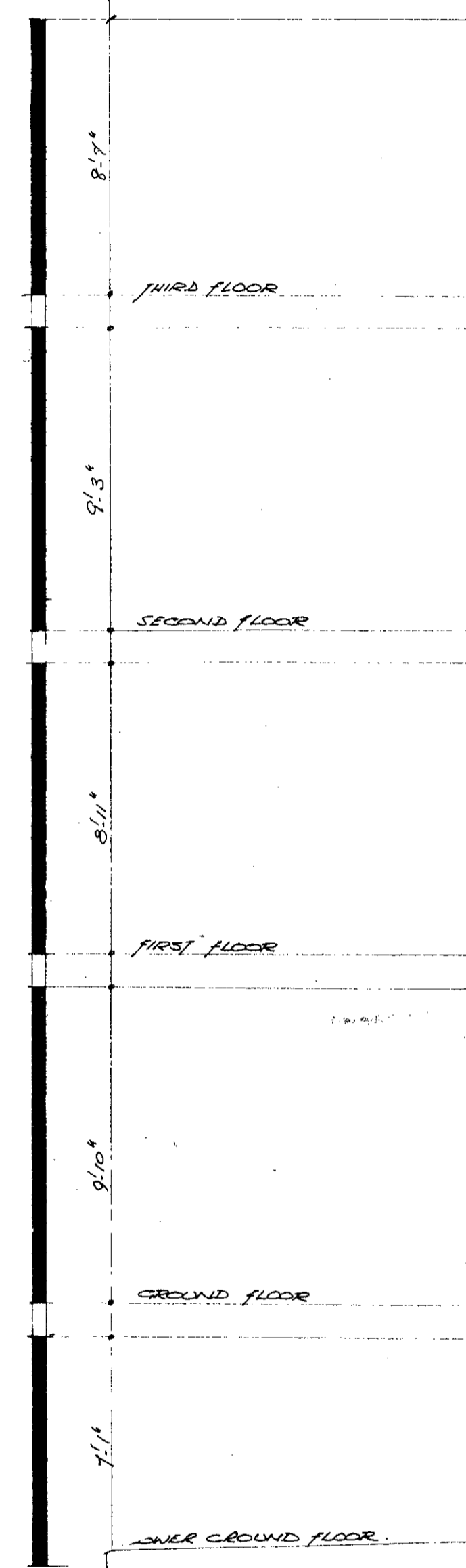
first floor



second floor



third floor



NOTE:
ALL INTERNAL DOORWAYS TO BE MECHANICALLY
VENTILATED MIN. 5 MINS AIR CHANGE PER HOUR.
I.R.D. DOORS TO BE 5/8" FIRE RESISTANT
SELF CLOSING.

LONDON BOROUGH OF CAMDEN
PLANS APPROVED
13 FEB 1973
ON BEHALF OF THE COUNCIL

Revisions		GTP/NIS/13/A/14421	
Job		48 RED LION STREET W.C.1. as proposed	
HASLEMERE ESTATES LTD., 4, Carlos Place, London, W1Y 5AE. 01-629-1105.			
Scale	4 feet to 1 inch	DRG NO.	
Date	July 1972	48 RLS/JG/2	
Drawn By	P.E.S.		
IF IN DOUBT - ASK			