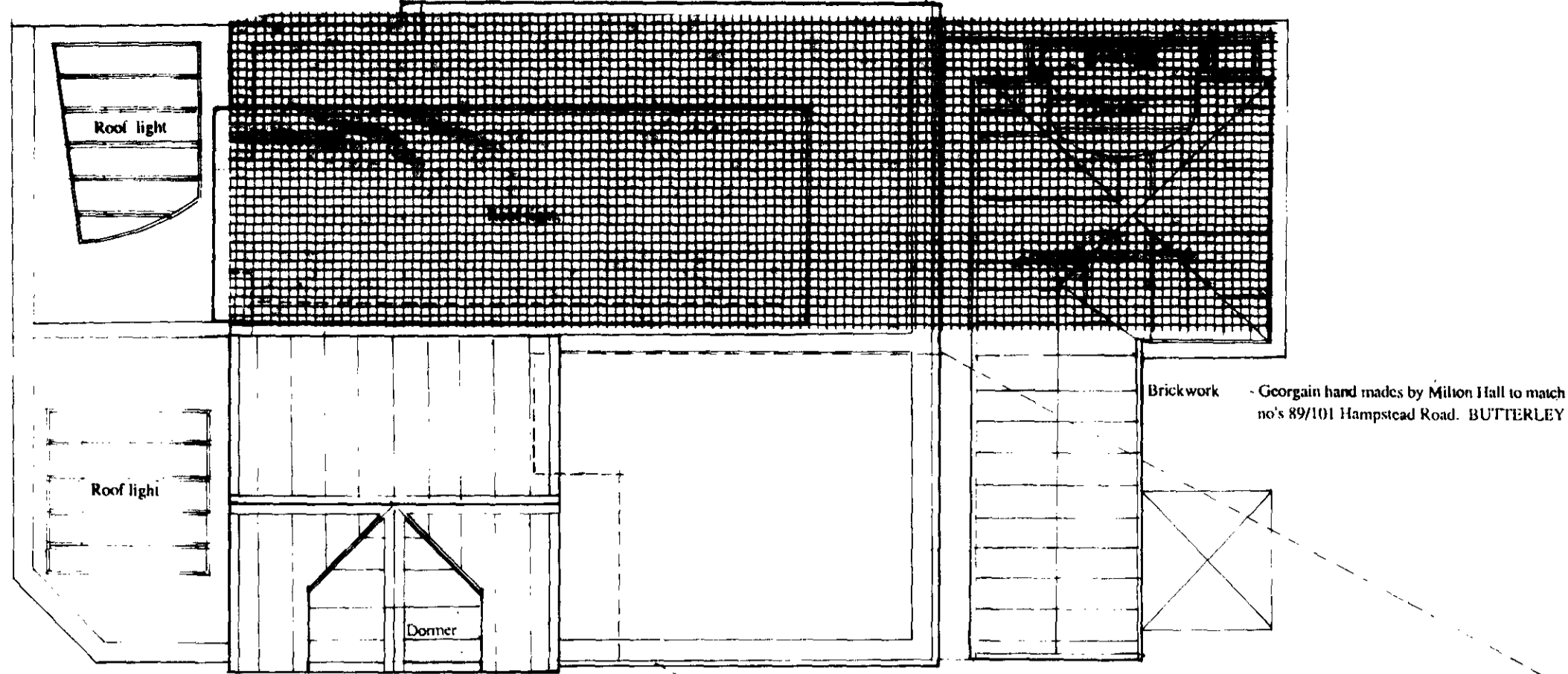
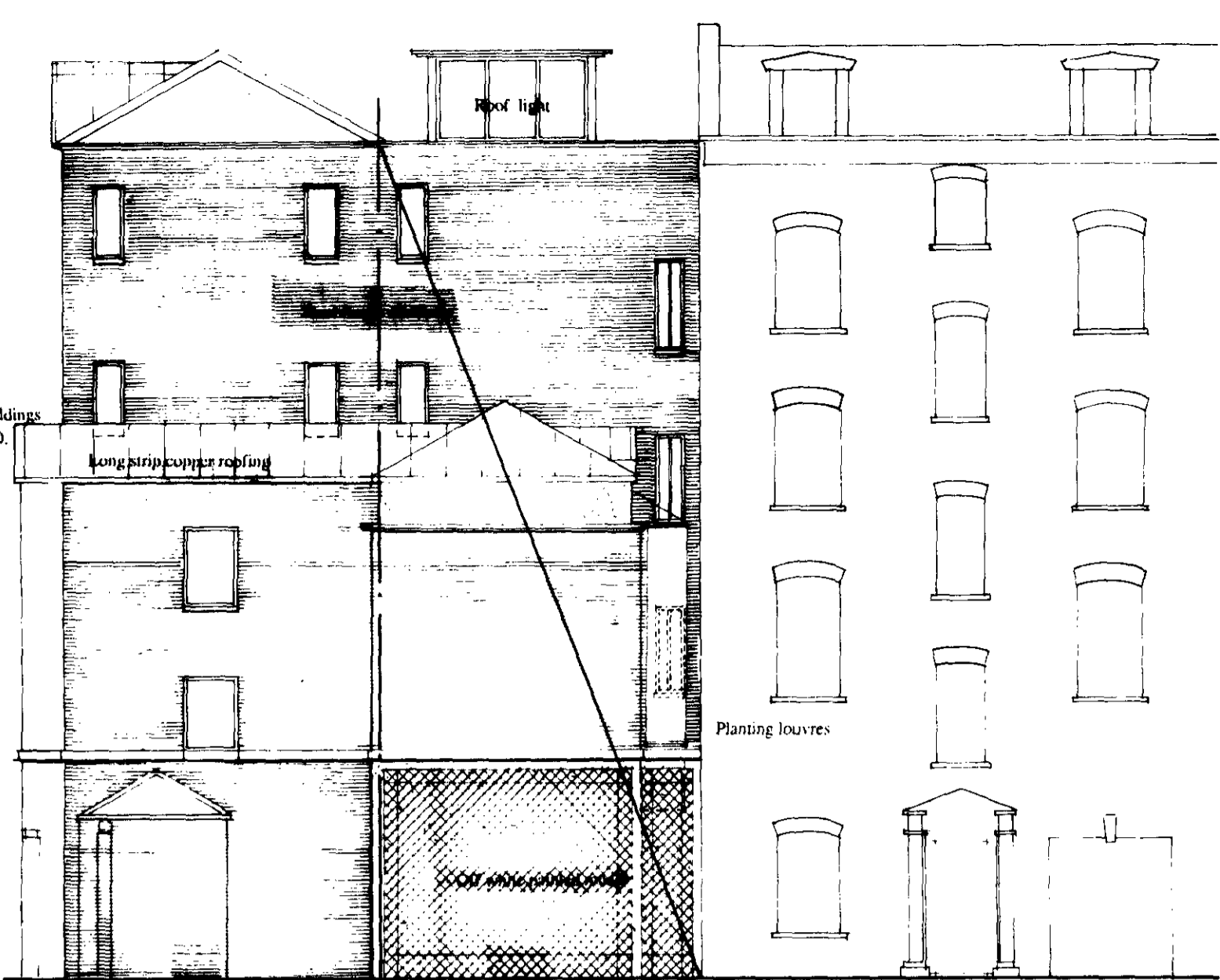


103

105



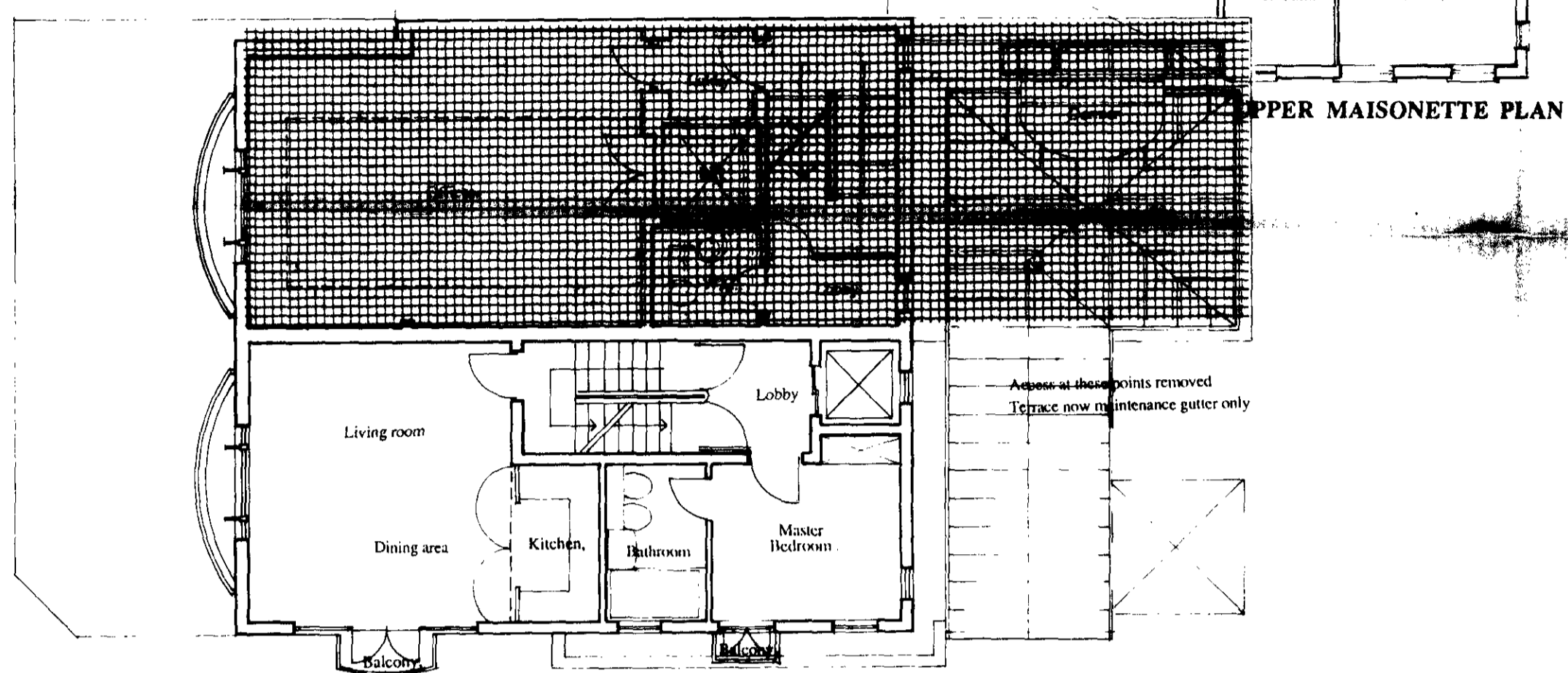
ROOF PLAN



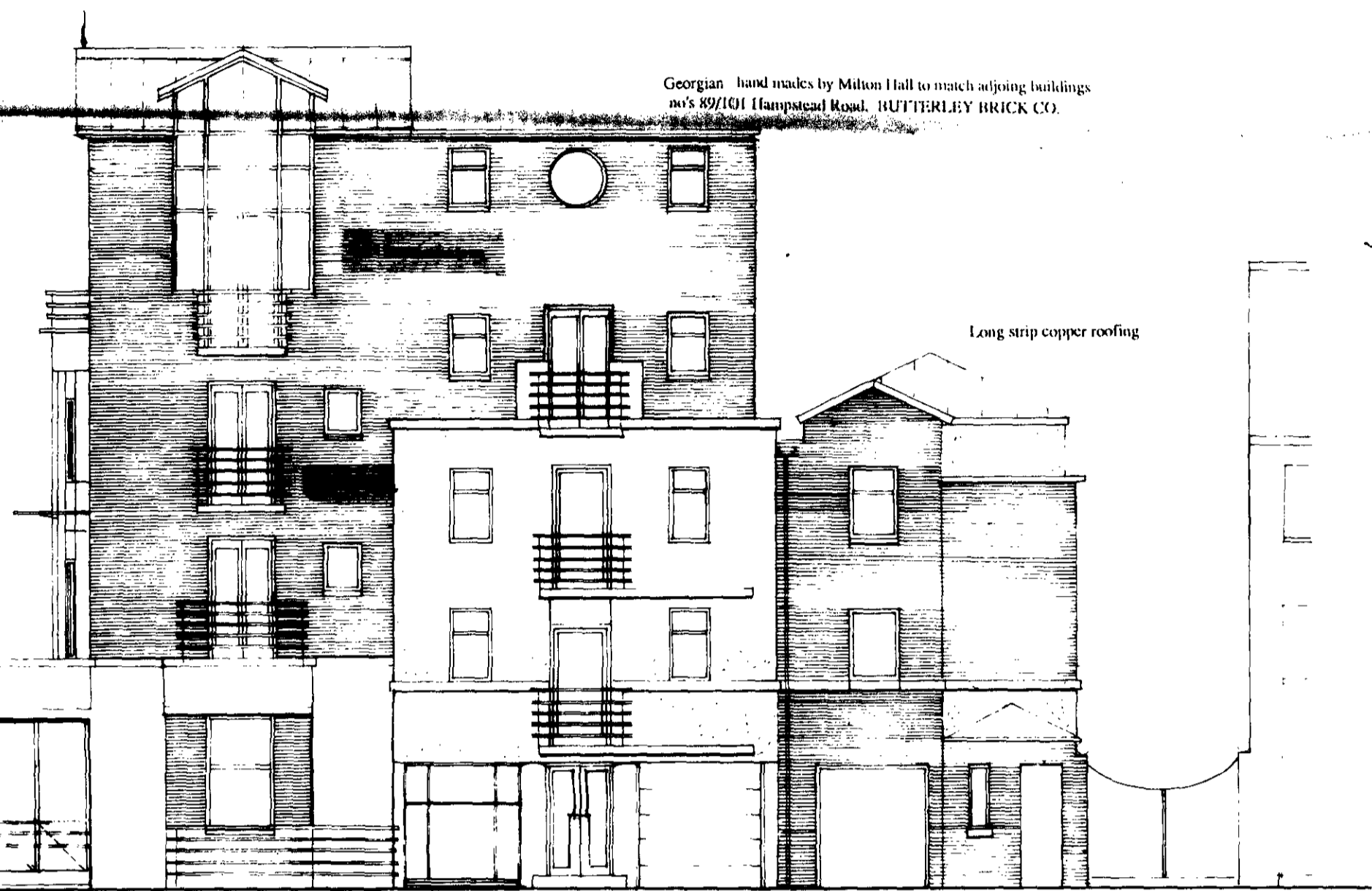
REAR ELEVATION

103

105



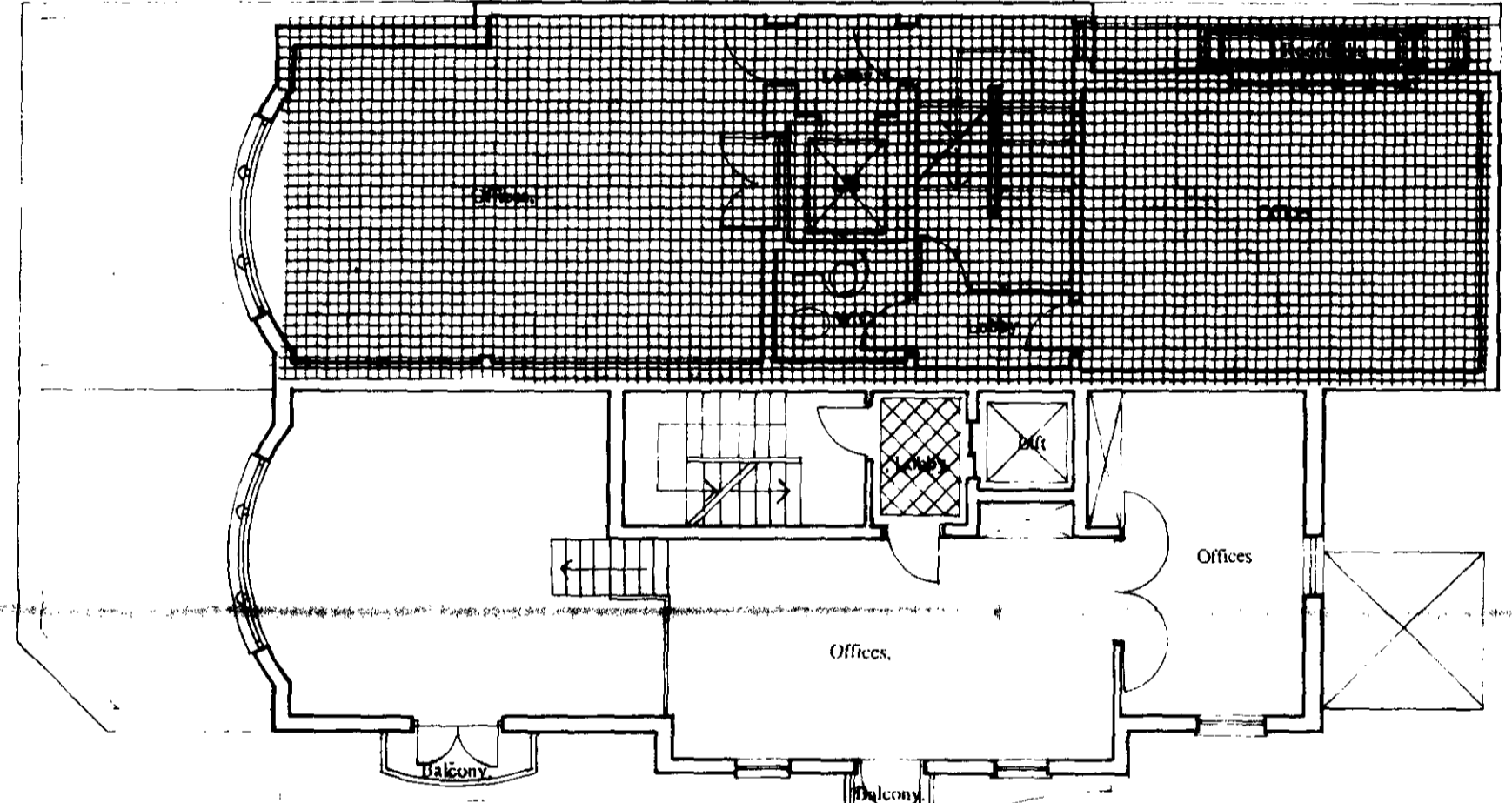
UPPER MAISONETTE PLAN



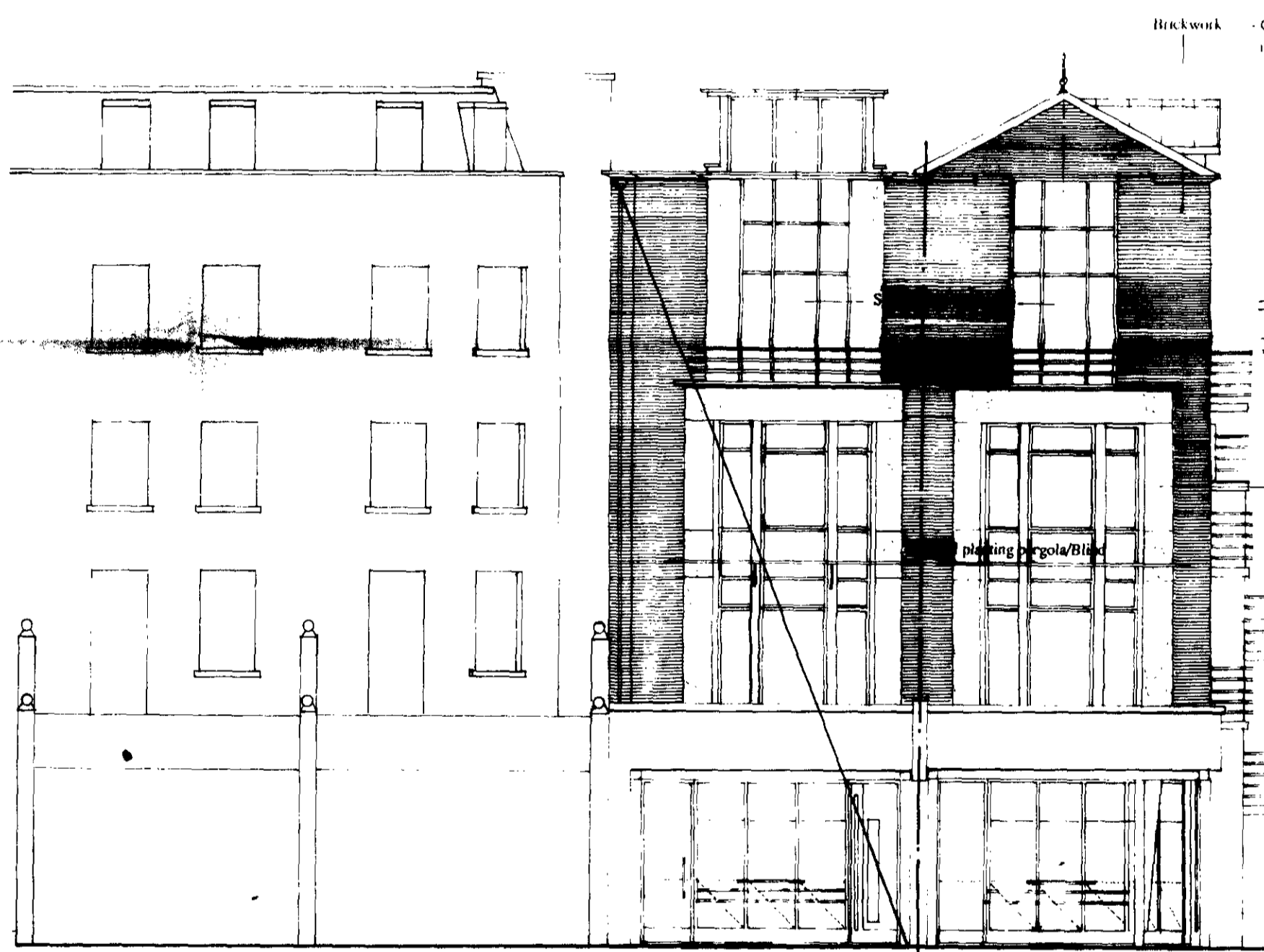
NETLEY STREET ELEVATION

103

105



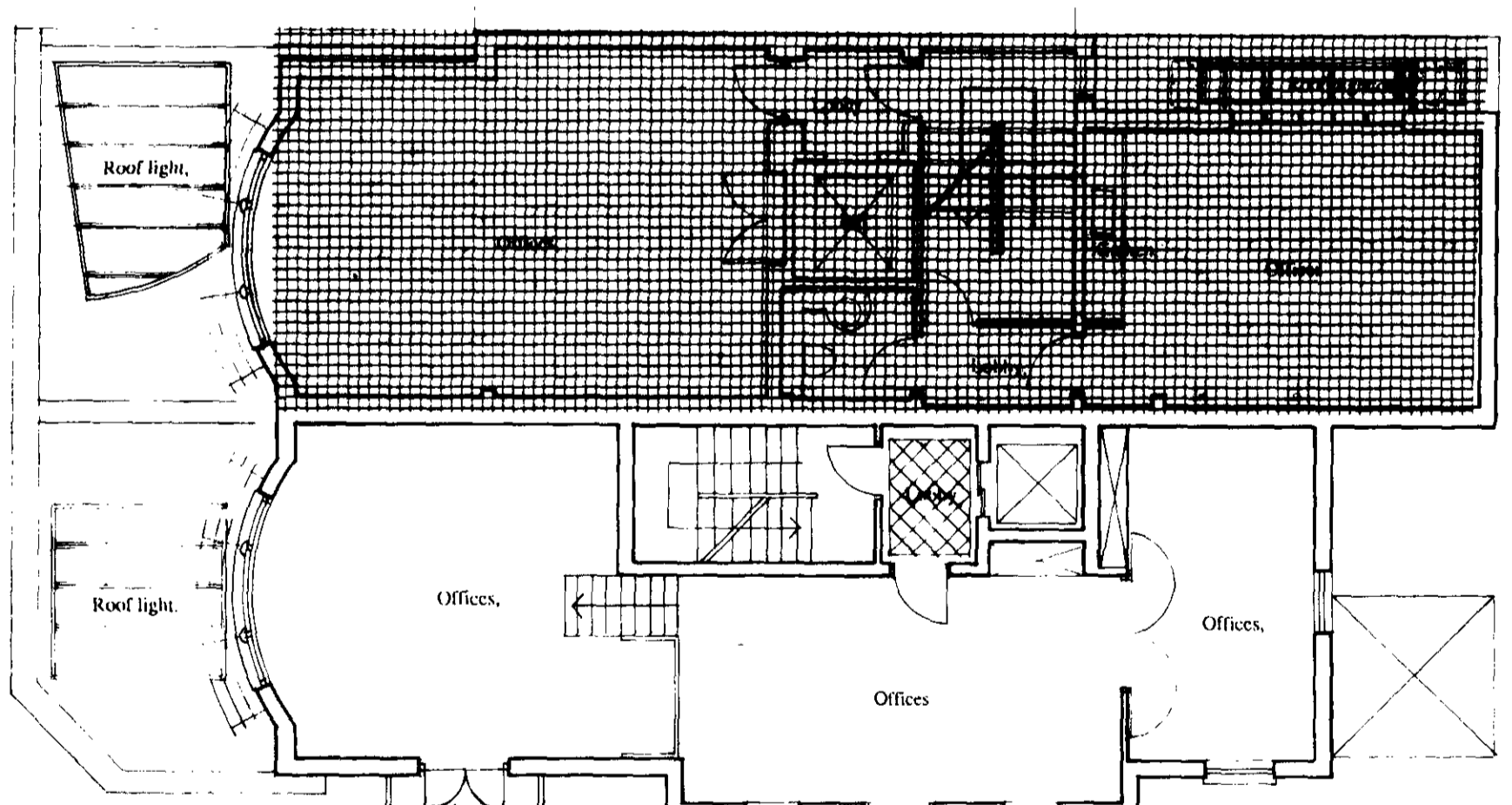
THIRD FLOOR PLAN



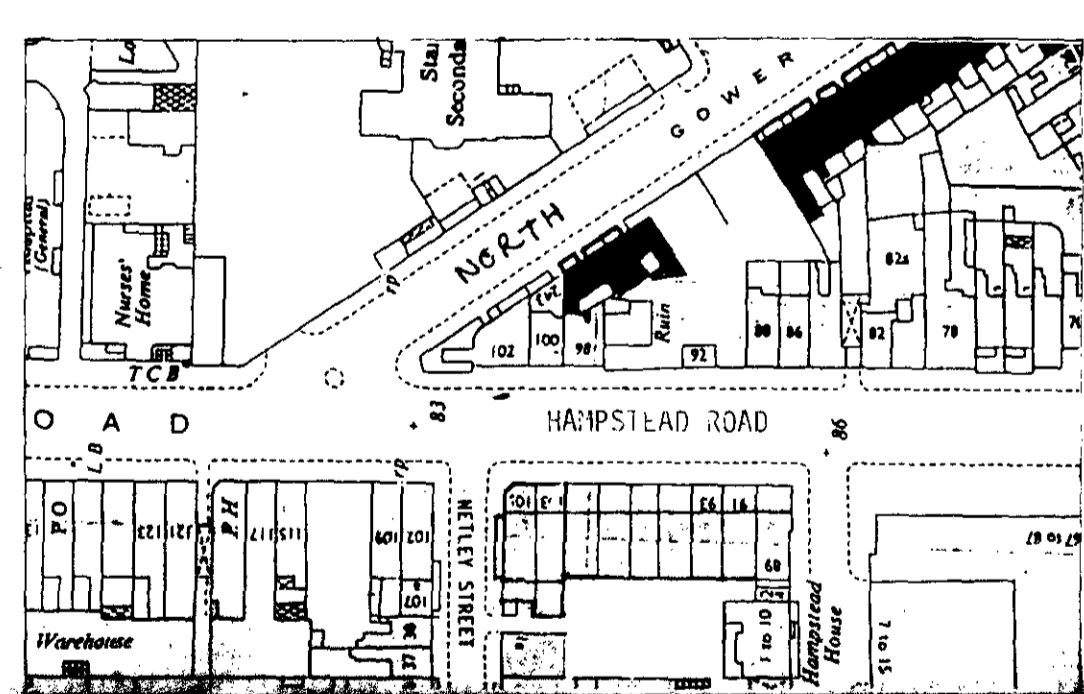
HAMPSTEAD ROAD ELEVATION

103

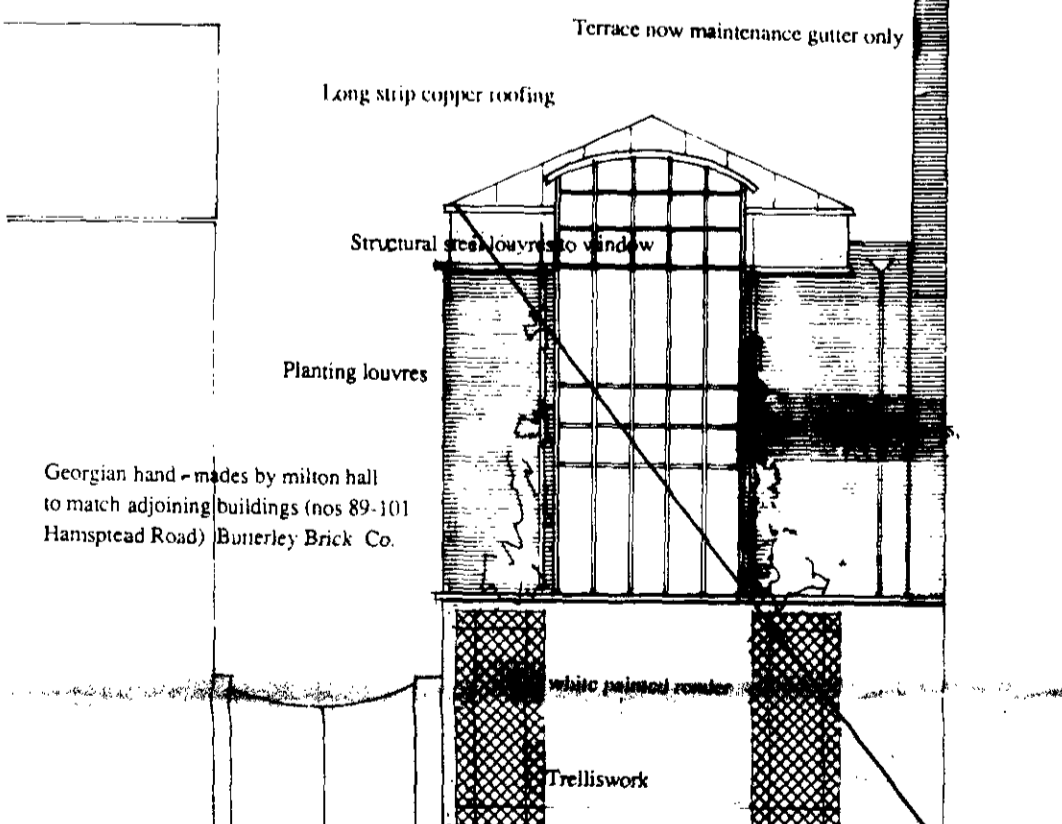
105



SECOND FLOOR PLAN

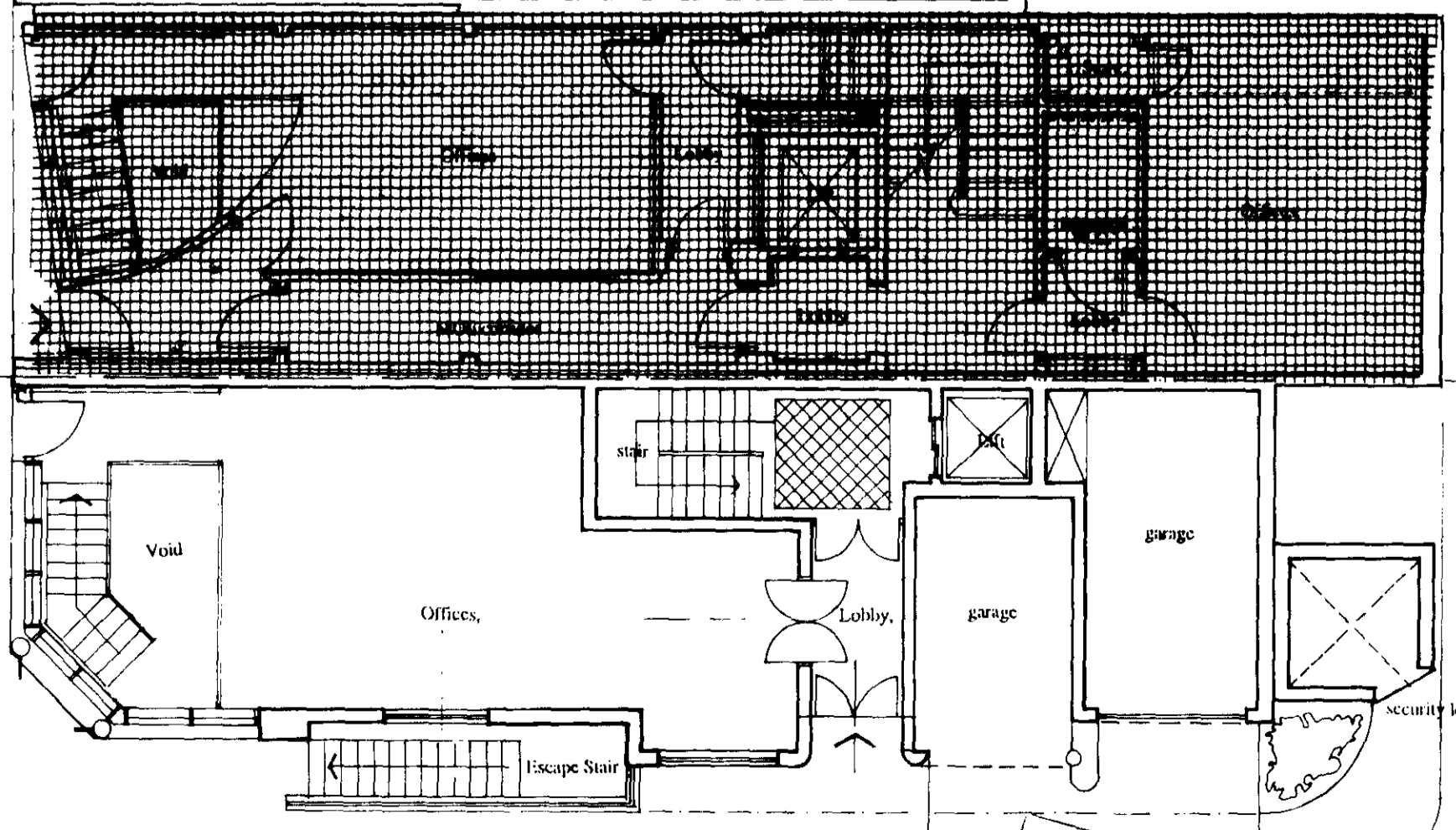


SITE PLAN 1:1250

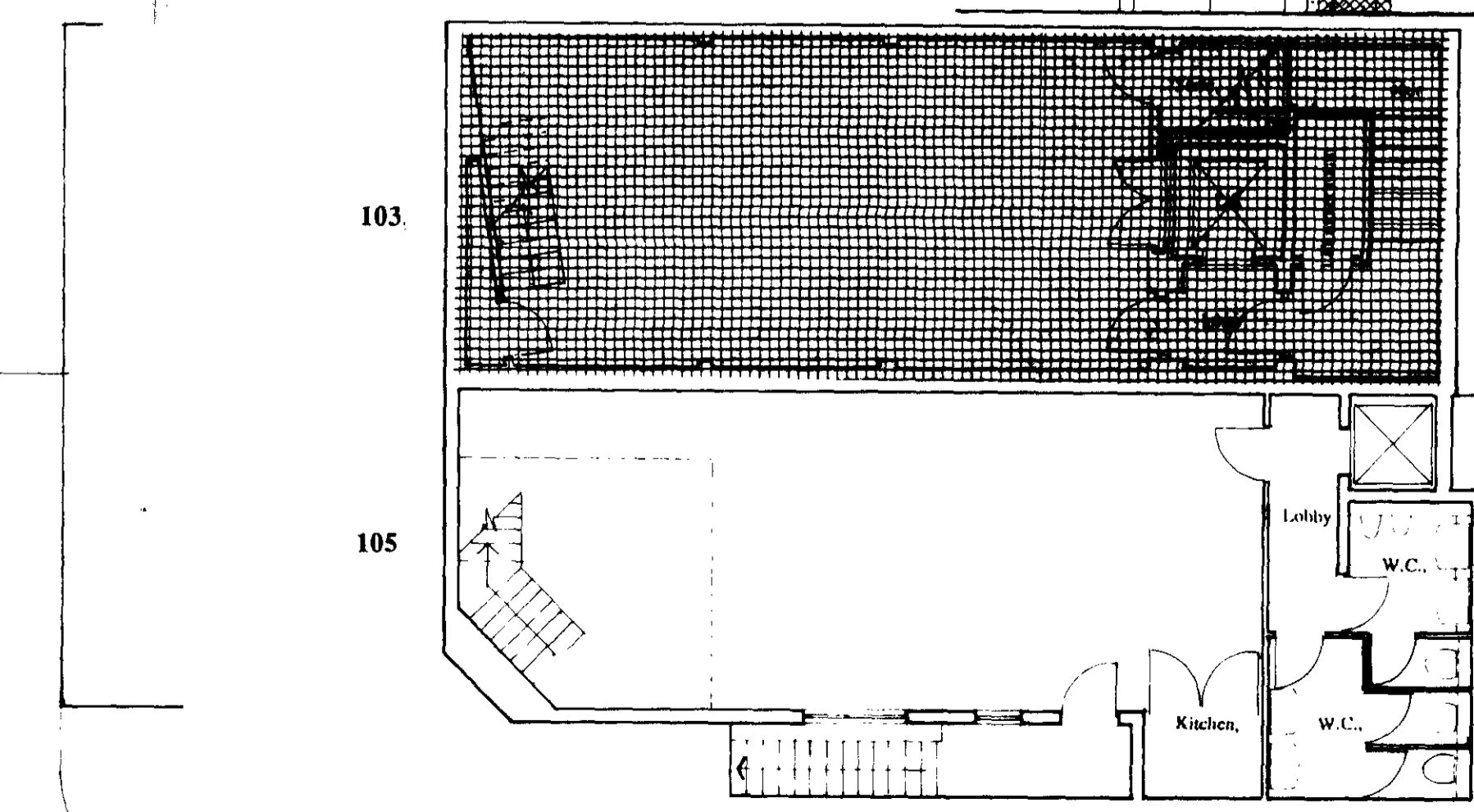


103

105



FIRST FLOOR PLAN



MEWS REAR ELEVATION

GROUND FLOOR PLAN

BASEMENT PLAN

LONDON BOROUGH OF CAMDEN
TOWN AND COUNTRY PLANNING ACTS
11 APR 1990
PLANS NOT APPROVED
ON BEHALF OF THE COUNCIL

TP9003094

LONDON BOROUGH OF CAMDEN
PLANNING AND TRANSPORT
RECEIVED
2 FEB 1990
RECEIVED
2 FEB 1990
RECEIVED
2 FEB 1990
RECEIVED
2 FEB 1990

- (i) Access to maintenance gutter removed refer note. (Former Terrace).
- (ii) Mews elevation revised. Building line moved back 1M. Structural steel louvers to windows. (All to removed overlooking problems 101.)
- (iii) Windows to ext. 103 rear elevation removed.

103/105 HAMPSTEAD ROAD

PLANS AND ELEVATIONS (PLANNING REV) MEWS ELEVATION

DATE: DEC.1989

SPRING NO: HR 90 01

SCALE: 1:100

ALL DIMENSIONS TO BE CHECKED ON SITE TO THIS SCALE

THIS DRAWING IS COPYRIGHT

36-37
CHARTERHOUSE
SQUARE
LONDON EC4A 3DF
TEL 01-600 5151
FAX 01-600 1092
HARPER
MACKAY
ARCHITECTS
& DESIGNERS