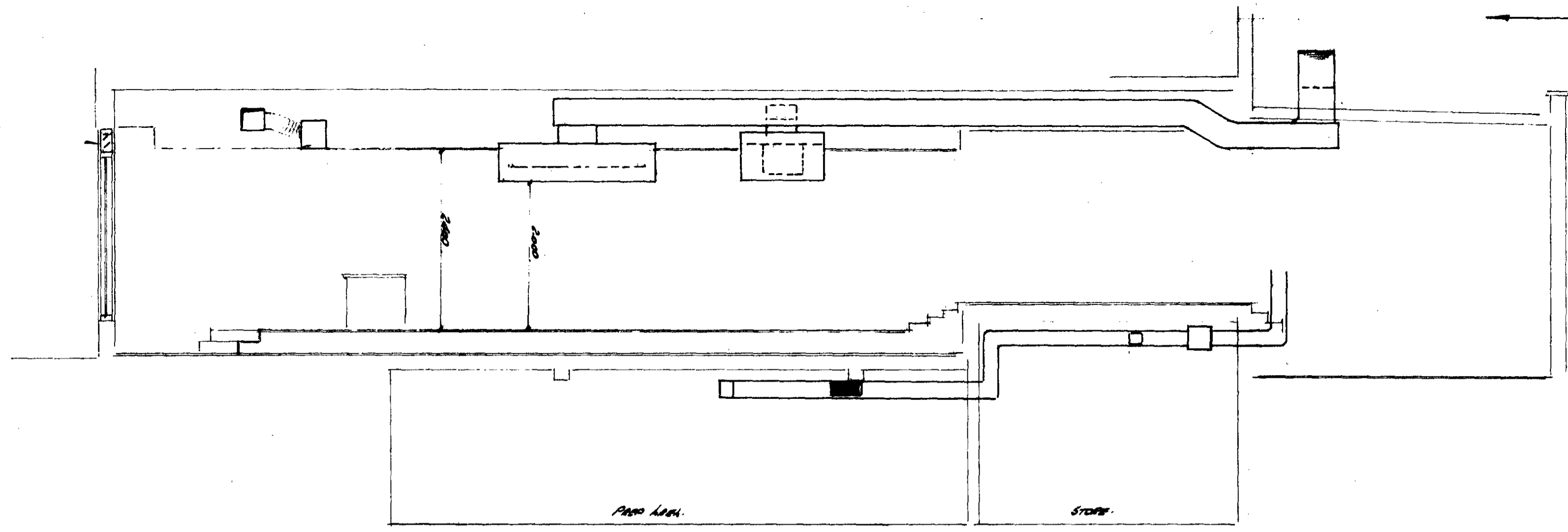
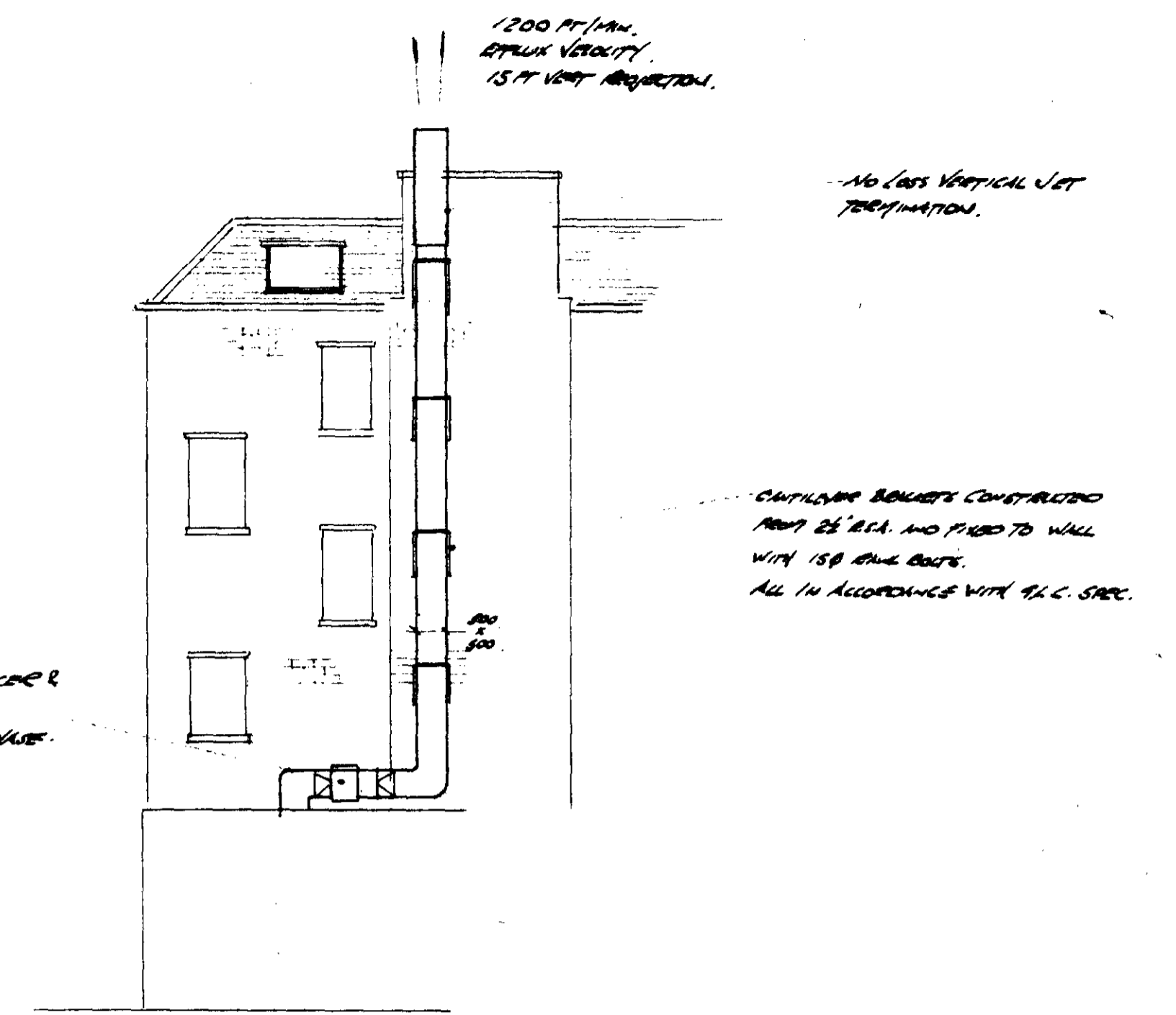


APPROXIMATE VENTS AS SHOWN



SECTION ON A-A



SIDE VIEW ON ARROW B

5.5 KW CHOOBY BY HORNWOODS TO VENT AIRBORNE DUSTIL.

5.5 KW CHOOBY WITH GRINDER FILTER (BY HORNWOODS)

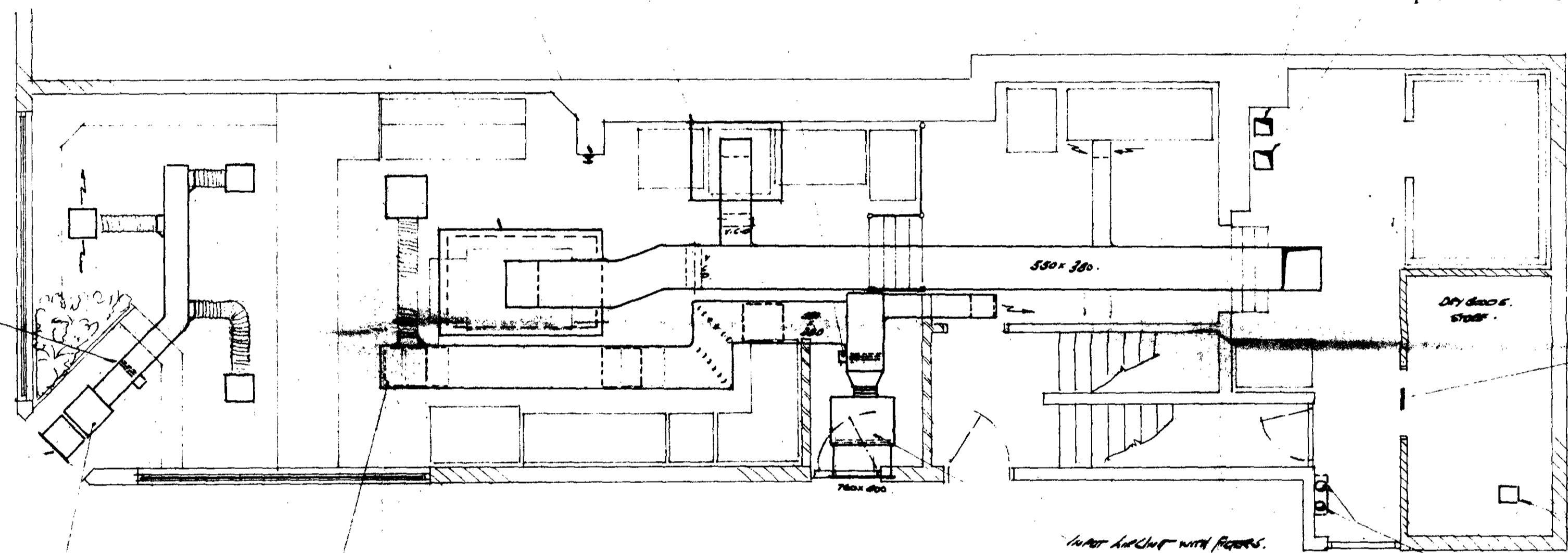
20 KW HORNWOODS BATTERY

150 SQ FT/HR AIR EXTRACT UNIT ROOF OVER OFFICE TO BATTERY

200 SQ FT/HR EXTRACT UNIT BATTERY TO OFFICE

AIRFLOW FROM FAN WITH SILENCER & MOUNTINGS. 19" DIA. 1/40 BPH. SINGLE PHASE WITH SPEED CONTROLLER.

CATALYTIC BURNERS CONSTRUCTED FROM 2 1/2" DIA. AND FIXED TO WALL WITH 150 SHOE BRACKETS. ALL IN ACCORDANCE WITH E.L.C. SPEC.



PLAN AT GROUND FLOOR LEVEL

ALL DUCTWORK TO BE IN ACCORDANCE WITH D.M. 142 A.C. SPEC.
 ALL WORKING TO BE IN ACCORDANCE WITH 16th EDITION.
 ALL MATERIALS FOR SYSTEM TO BE GRABED BY SUBMITTING OFFICE.
 ALL BUILDERS WORK & SCAFFOLDING TO BE GRABED BY SUBMITTER.

8 KW HORNWOODS BATTERY 2 x 4 KW STAGES. MANUALLY SWITCHED. 18" DIA. TO 20" DIA.

400 SQ FT/HR AIR EXTRACT UNIT

300 SQ FT/HR AIR EXTRACT UNIT

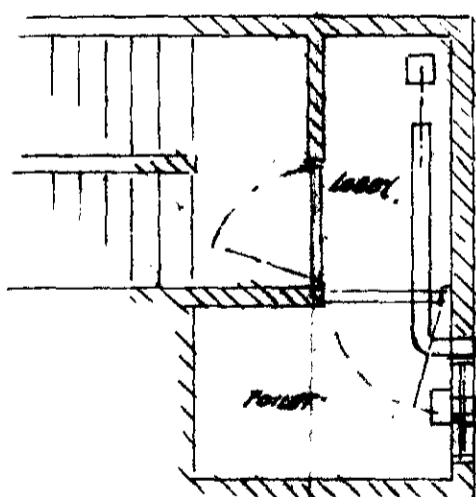
FAN UNIT WITH FILTER. DUCT 800 CFT.

1000 SQ FT/HR AIR EXTRACT UNIT WITH FILTER. DUCT 1800 CFT.

2000 THERMISTOR COIL

5 1/2" ROOF FAN

TIGHT DUCT AIR TO ROOF ROOF OVER. (TO BE MADE GOOD)



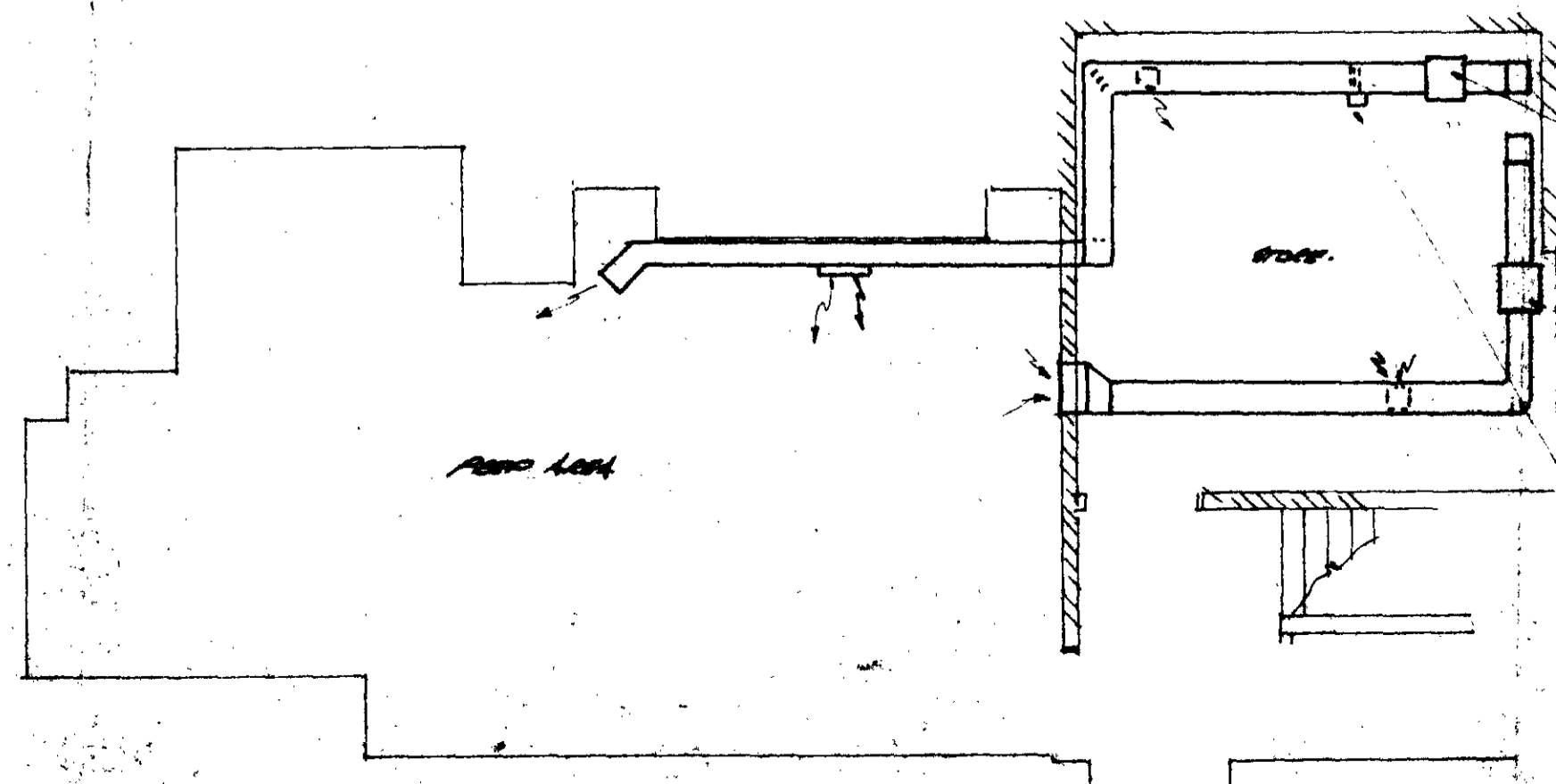
PLAN AT MEZZANINE LEVEL

NO 6" DUCT FROM 1/2" TO LOBBY

LOBBY EXTRACT UNIT

AIR CHANGE RATES.

GROUND FLOOR AREA	NUMBER	PER HOUR
WINDUP	30	PER HOUR
SWIMMER	60	PER HOUR
DRY GOODS STORE	12	PER HOUR
TOILET	4	PER HOUR
STORE BATTERY	8	PER HOUR
WIND UP	8	PER HOUR



PLAN AT BASEMENT LEVEL

TABLE OF ELECTRICAL LOADS

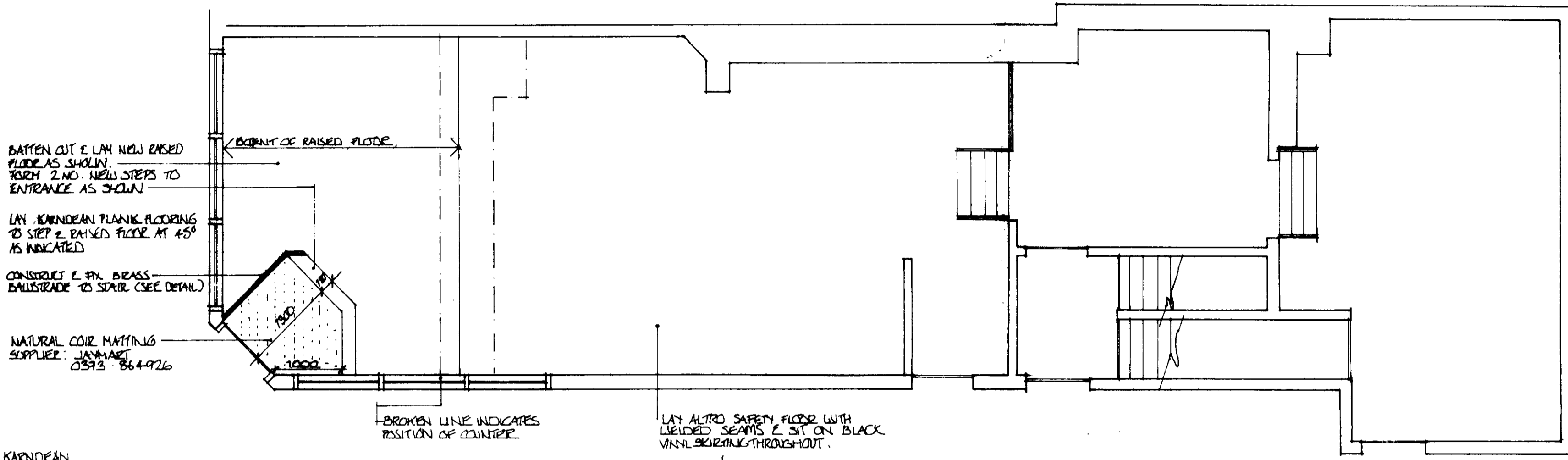
APPLIANCE	R	Y	B.
WIND UP UNIT FAN, FLOOR AREA	2	2	-
WIND UP UNIT FAN, MEZZANINE AREA		2	
WIND UP UNIT BASEMENT AREA			1
STORAGE BATTERY FAN	5		
BASEMENT BATTERY FAN			1
HORNWOODS BATTERY	8 KW	11	11
HORNWOODS BATTERY	16 KW	24	24
HORNWOODS BATTERY	4 KW	8.8	8.8
LOBBY FAN			1
ROOF FAN			1
TOTAL ALL HORNWOODS ON	58.5	66.8	66.8
TOTAL HORNWOODS OFF	5	4	4

TP 8903024

Davies Ductwork Designs

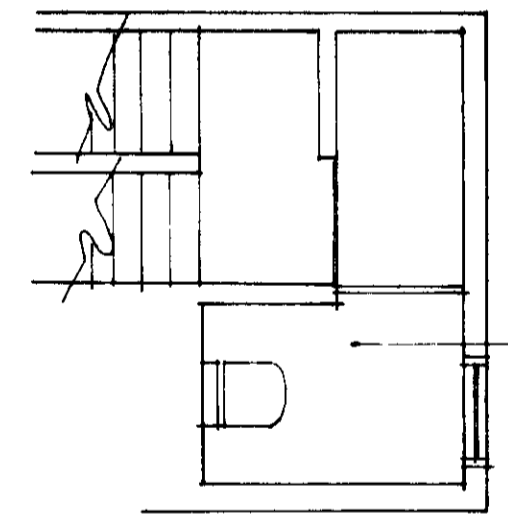
LONDON BOROUGH OF CAMDEN
 TOWN AND COUNTRY PLANNING ACTS
 10 JUL 1989
 PLANS NOTIFIED
 ON BEHALF OF THE ENVIRONMENT

9922 57817
 COPTON TOWER FRIEL
 105, MANCHESTER RD
 BARNET, N.W.1
 PERMITTED VENTILATION SYSTEM
 DATE: 10.9.88 SCALE: 1:50. ORGN: B.S.51/80
 REV: 855/100



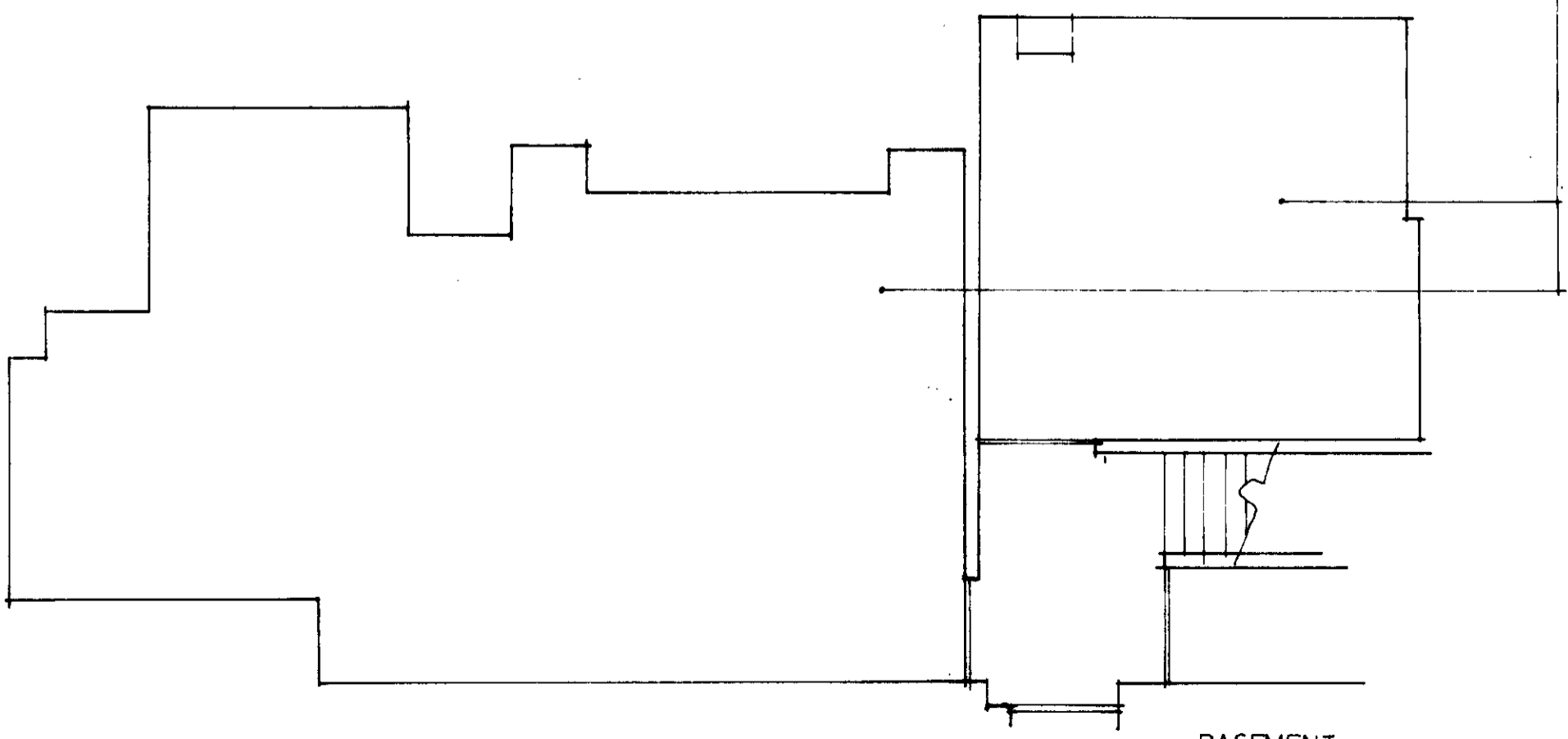
KARNDIEN
UNIT 4
MUCKLOW TRADING ESTATE
HALSOWEN
W. MIDLANDS
TEL. 021 550 9131

GROUND FLOOR



SEMI BASEMENT

LAY ALTRIO SAFETY FLOOR THROUGHOUT WITH WELDED SEAMS & SIT ON VINYL SKIRTING



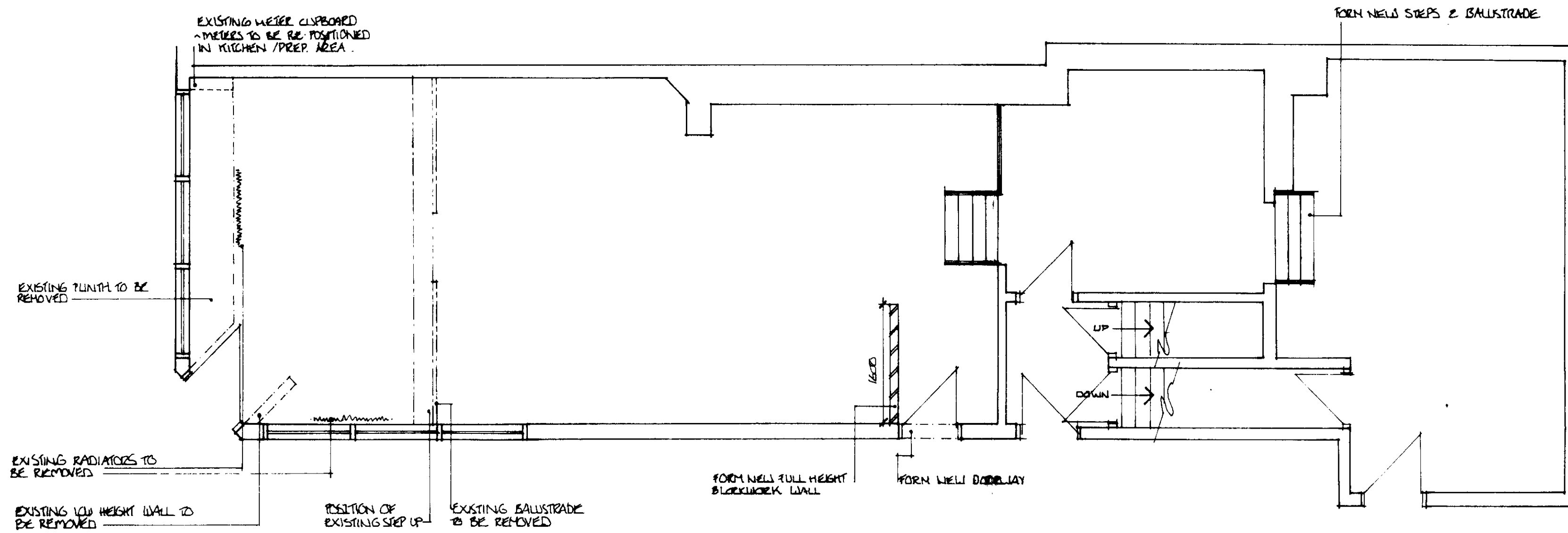
BASEMENT

LONDON BOROUGH OF CAMDEN
TOWN AND COUNTRY PLANNING ACTS
10 JUL 1989
PLANS APPROVED
~~NOT APPROVED~~
ON BEHALF OF THE COUNCIL

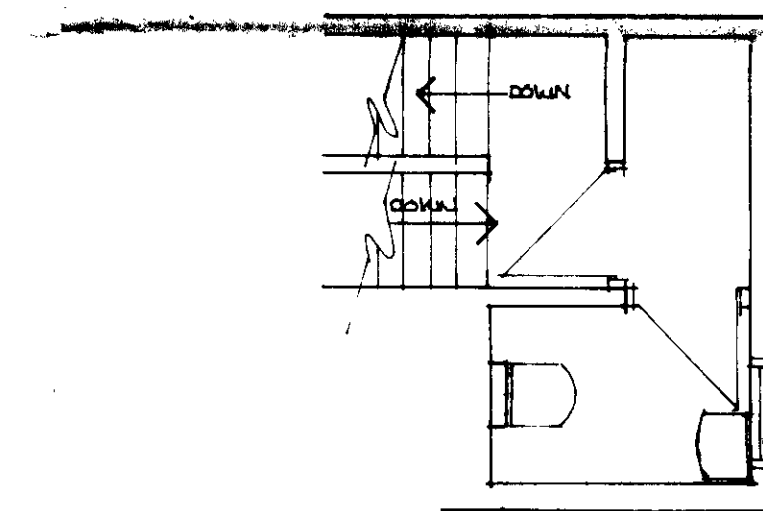
CTP/8903024

REVISION A FLOORING SPEC. (TIMBER VINYL)
REVISED

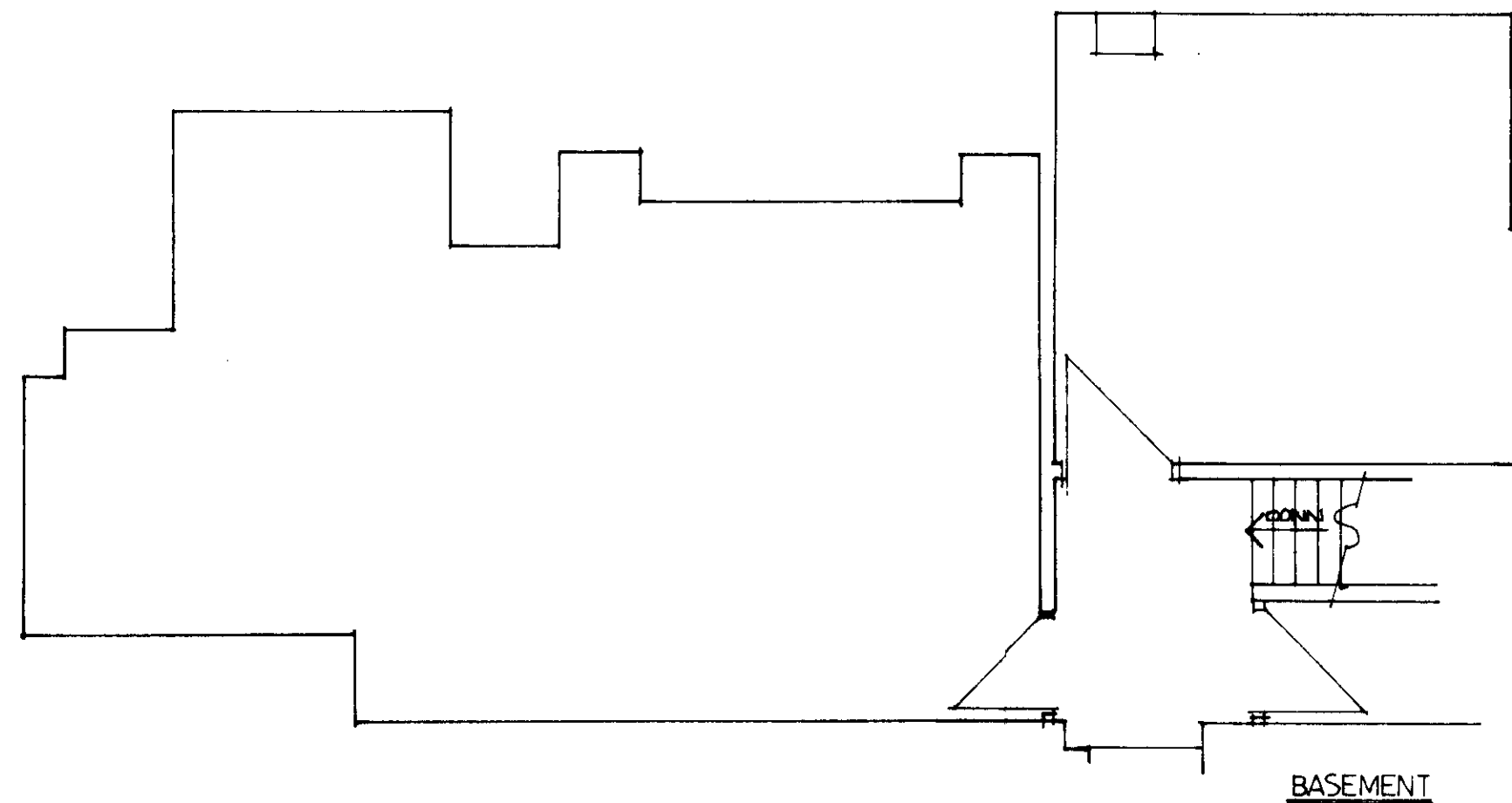
PROJECT	CAPTAIN TONY'S PIZZA 105 HAMPSTEAD RD LONDON NW1
TITLE	FLOOR FINISHES
SCALE	1:50
DATE	28.8.88
DRAWN BY	D FRANKS
DRWG. NO.	DF/100/03



GROUND FLOOR



SEMI BASEMENT

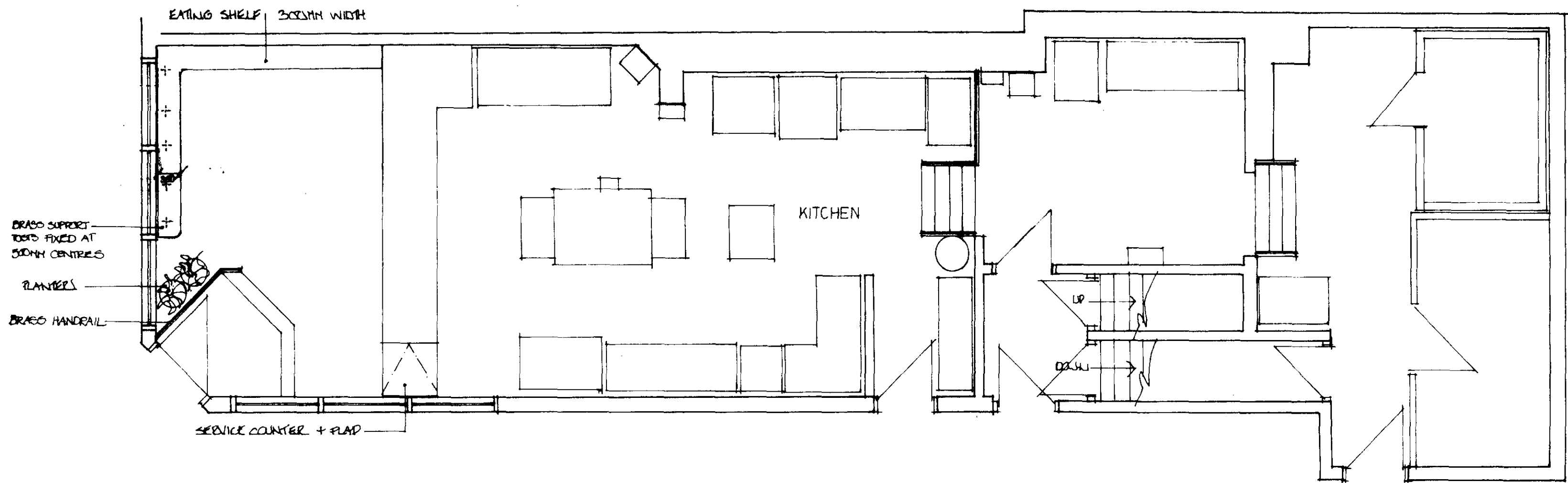


BASEMENT

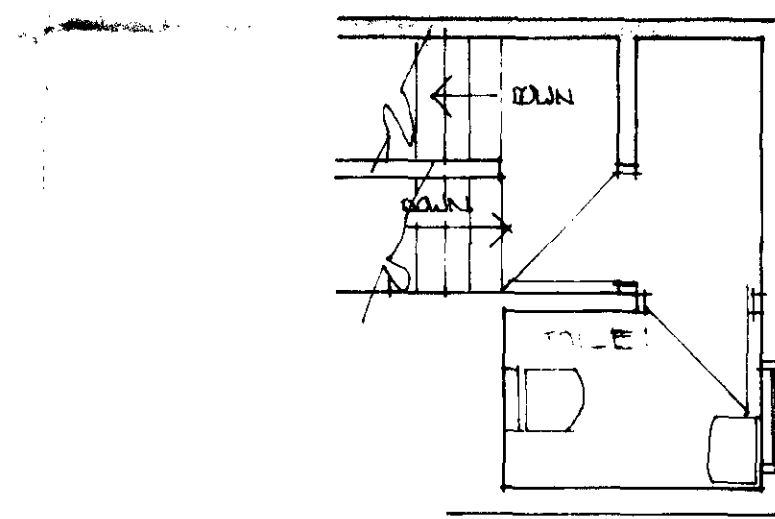
LONDON BOROUGH OF CAMDEN
TOWN AND COUNTRY PLANNING AUTHORITY
10 JUL 1989
PLANS ~~NOT~~ APPROVED
ON BEHALF OF THE COUNCIL

TP 89 03024

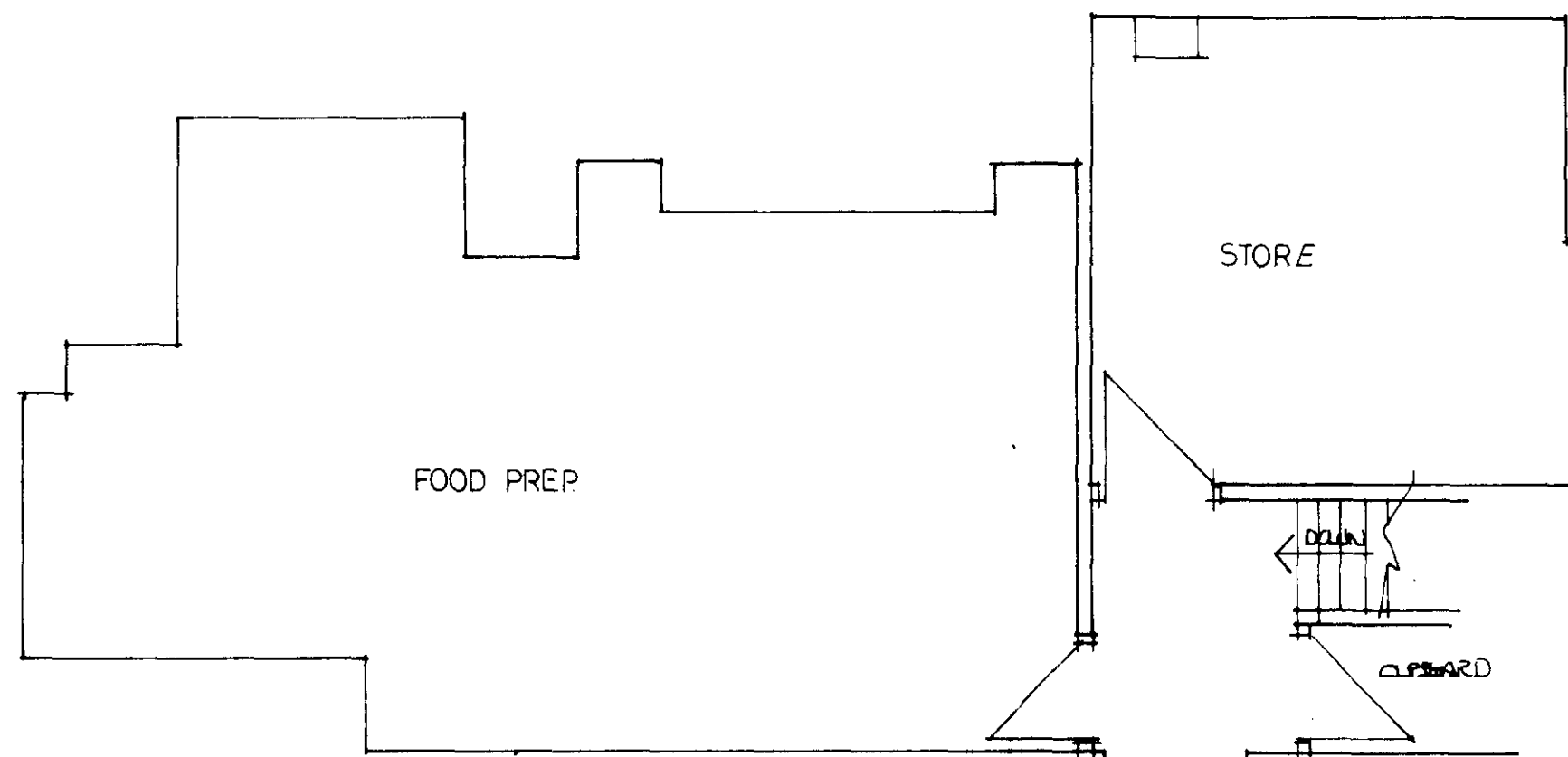
PROJECT	CAPTAIN TONY'S PIZZA 105 HAMPSTEAD RD. LONDON NW1
TITLE	BUILDING WORKS
SCALE	1:50
DATE	28.8.88
DRAWN BY	DFRANKS
DRWG. NO.	DF/100/02



GROUND FLOOR



SEMI BASEMENT



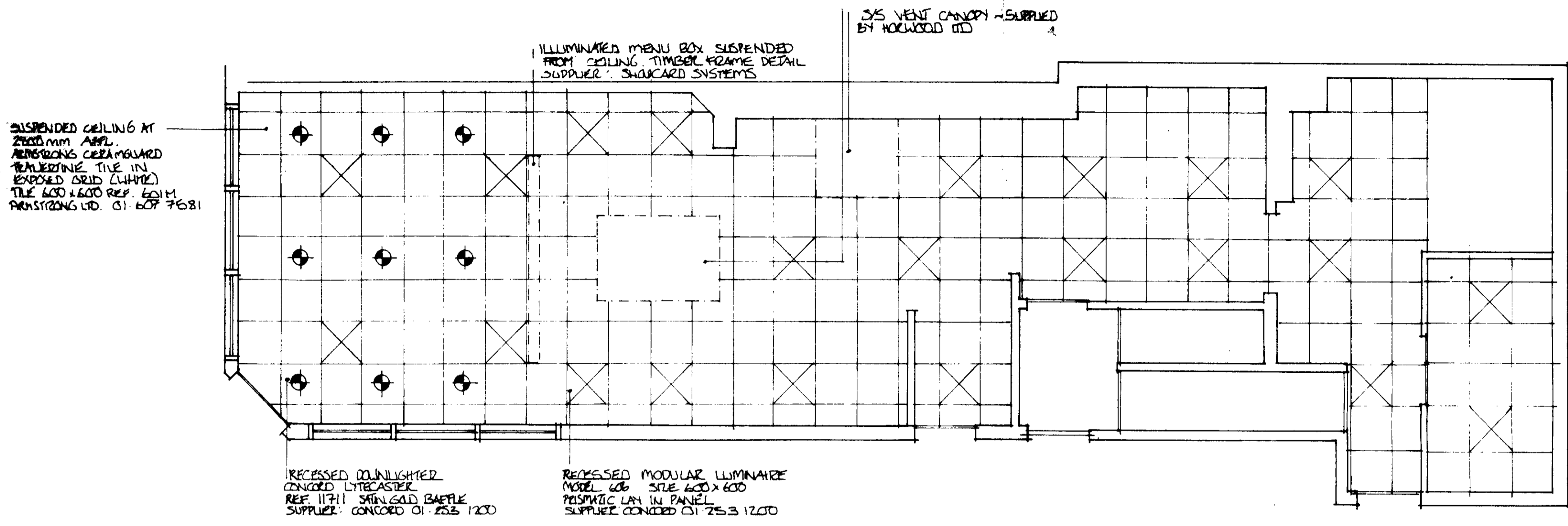
BASEMENT

REVISION A STOOLS OMITTED.
EATING SHELVES REVISED

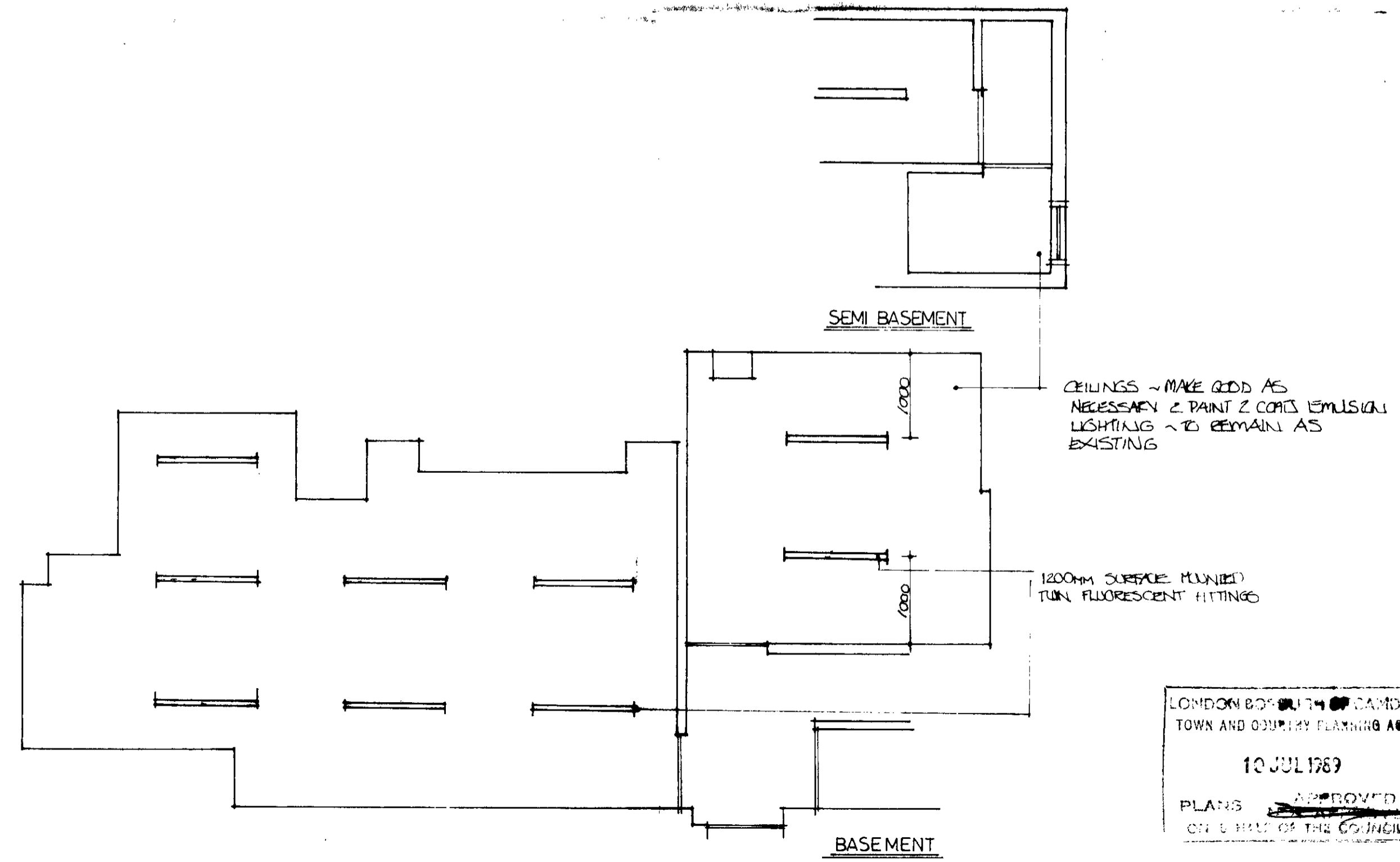
TP 8903024

LONDON BOROUGH OF CAMDEN
TOWN AND COUNTRY PLANNING ACT 8
10 JUL 1989
APPROVED
PLANS ~~NOT APPROVED~~
ON BEHALF OF THE COUNCIL

PROJECT	CAPTAIN TONY'S PIZZA 105 HAMPSTEAD RD. LONDON NW1
TITLE	LAYOUT PLAN
SCALE	1:50
DATE	28 8 88
DRAWN BY	D FRANKS
DRWG. NO.	DF/100/01 A



GROUND FLOOR



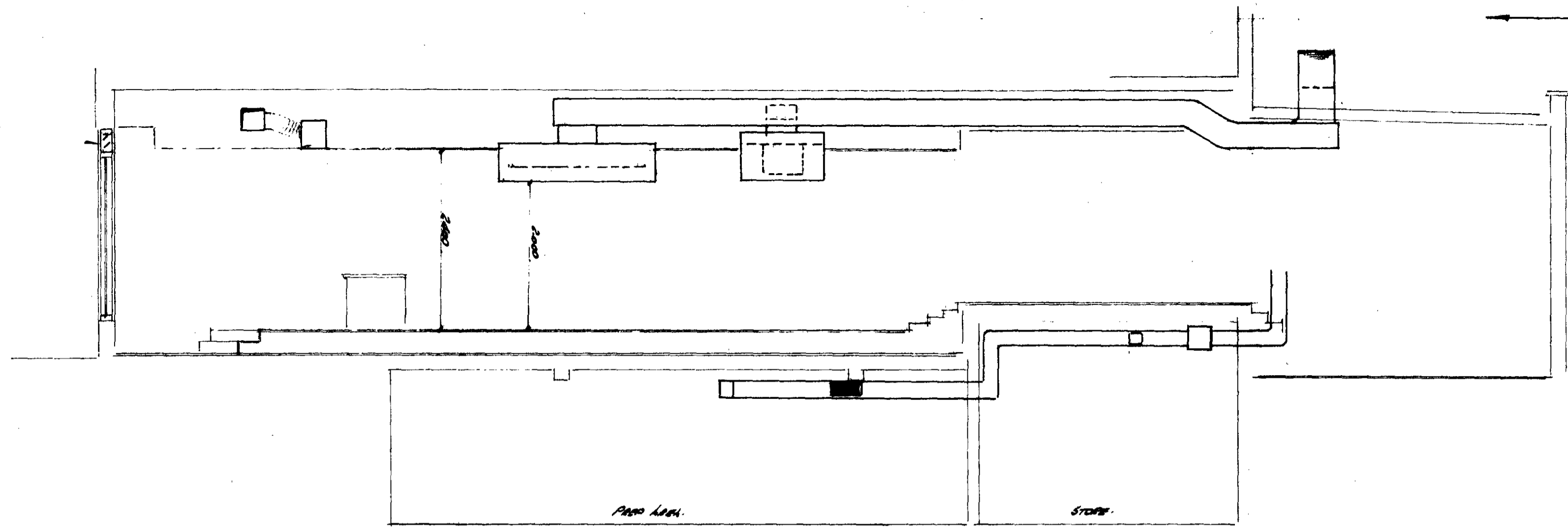
REVISION A LIGHTING ADDED TO BASEMENT & PUBLIC AREAS.

TP 89 0302.4

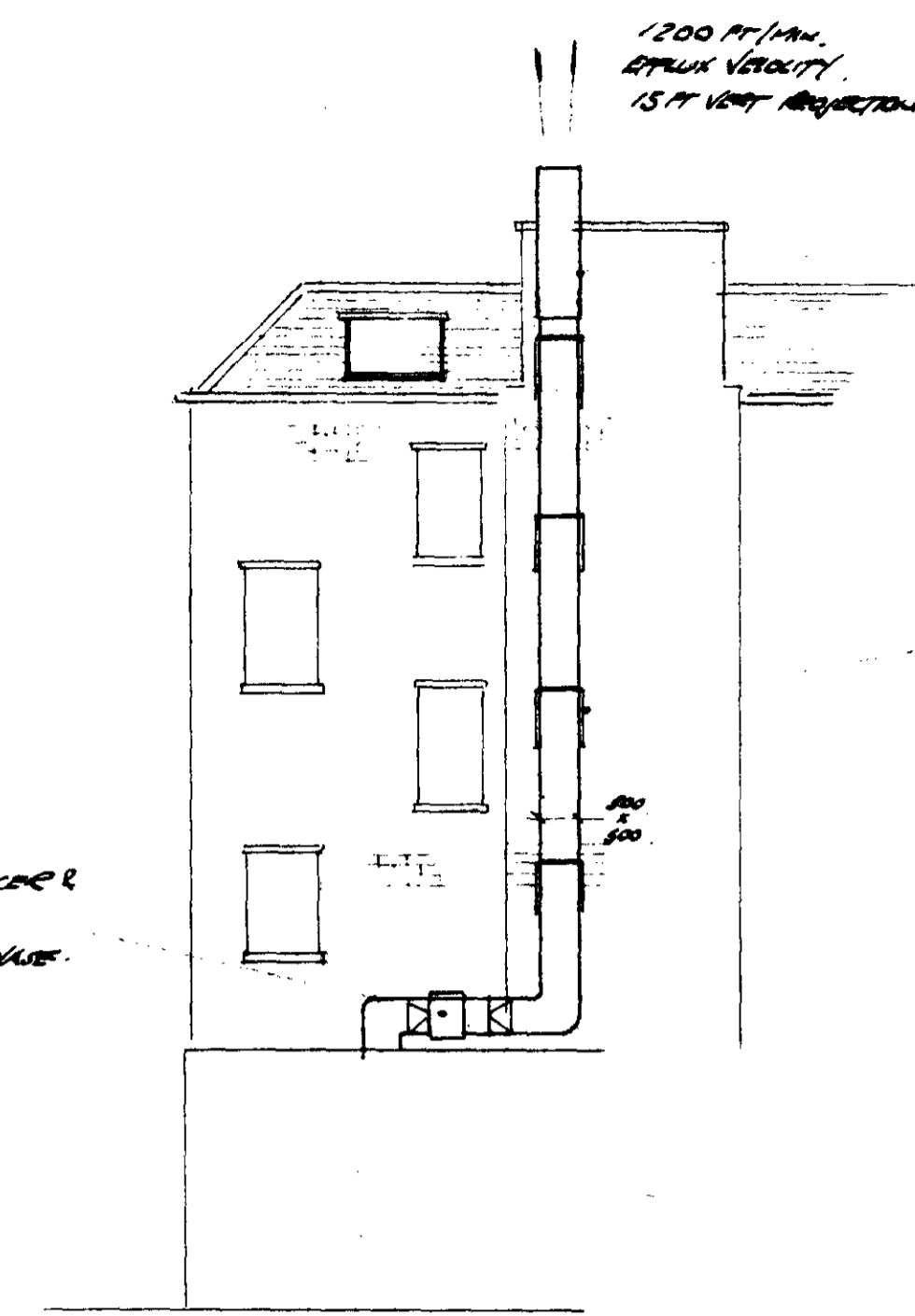
LONDON BOROUGH OF CAMDEN
TOWN AND COUNTRY PLANNING AUTHORITY
10 JUL 1989
PLANS ~~APPROVED~~
ON BEHALF OF THE COUNCIL

PROJECT	CAPTAIN TONY'S PIZZA 105 HAMPSTEAD ROAD LONDON NW1
TITLE	CEILING / LIGHTING PLAN
SCALE	1:50
DATE	28.8.88
DRAWN BY	D FRANKS
DRWG NO.	DF/100/04

APPROXIMATE VENTS AS SHOWN



SECTION ON A-A



ELEVATION VIEW ON SECTION B-B

5.5 KW CHOOBY BY HORNWOODS TO VENT THROUGH ROOF.

5.5 KW CHOOBY WITH GRASSER FILTER (BY HORNWOODS)

20 KW HORNWOODS BATTERY

250 SQ FT/HR AIR OUT. 200 FT OVER ROOF TO BATTERY

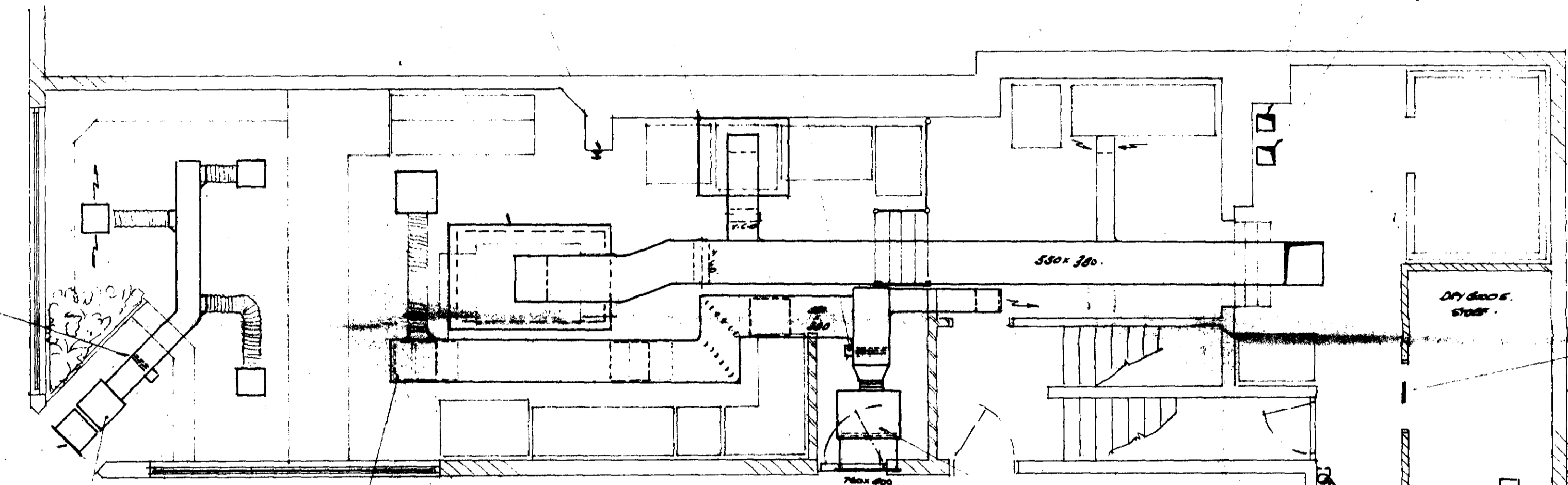
250 SQ FT/HR AIR OUT. 200 FT OVER ROOF TO BATTERY

AIR FLOW FROM FAN WITH SILENCER & MOUNTINGS. 19" DIA. 1/4" BORE. SINGLE PHASE WITH SPEED CONTROLLER.

1200 FT/HR. APPROX. VELOCITY. 15 FT VENT. DIAMETER.

NO LONG VERTICAL JET TERMINATION.

CAPILLARY BATTERY CONSTRUCTION PART 25 R.C. AND FIXED TO WALL WITH 150 SHOE BOLT. ALL IN ACCORDANCE WITH R.C. SPEC.



PLAN AT GROUND FLOOR LEVEL

8 KW HORNWOODS BATTERY 2 x 4 KW STAGES. MANUALLY SWITCHED. 18" DIA. TO 25" DIA.

400 SQ FT AIR TIGHT LAMINATE

300 SQ FT AIR TIGHT LAMINATE

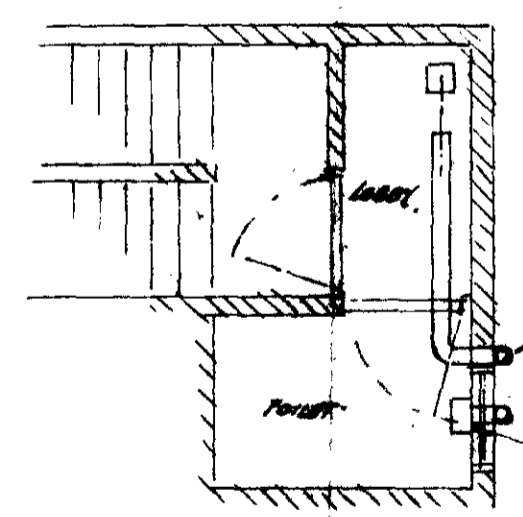
FAN UNIT WITH FILTER. DUCT 800 CFT.

UNIT AIR UNIT WITH FILTER. DUCT 1800 CFT.

2000 THERMISTOR COIL

SE ROOF FAN

TIGHT DUCT AIR TO ROOF ROOF OVER. (TO BE MADE GOOD)



NO 6 DUCT FROM 1/2 TO LOBBY

LOBBY FAN UNIT

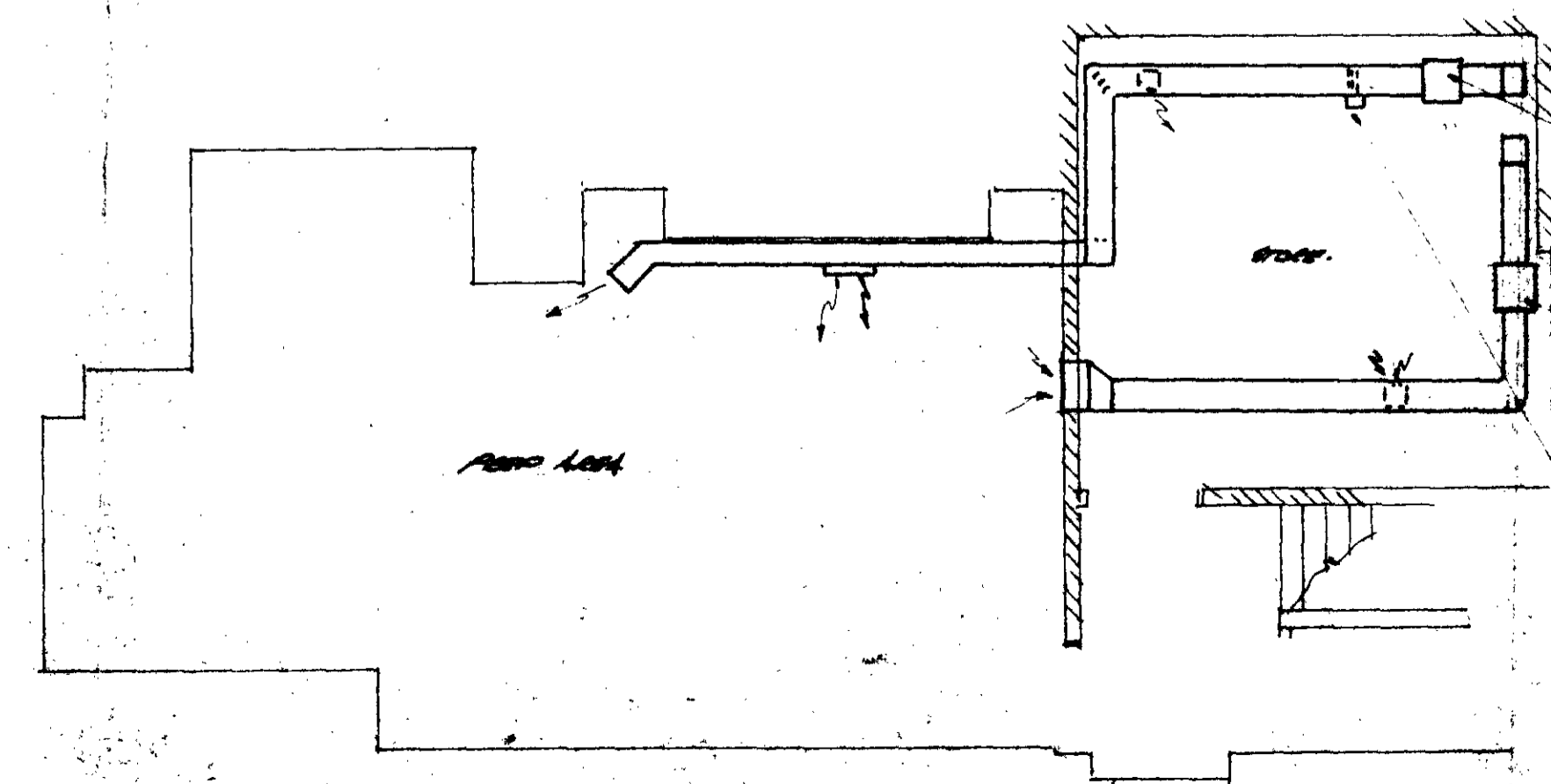
ALL DUCTWORK TO BE IN ACCORDANCE WITH DW 142 A.C. SPEC.
ALL WORKING TO BE IN ACCORDANCE WITH 16E REG. 15 EDITION.
ALL MATERIALS FOR SYSTEM TO BE CHECKED BY SURVEYING OFFICER.
ALL BUILDERS WORK & SCAFFOLDING TO BE CHECKED OUT BY SURVEYOR.

TABLE OF ELECTRICAL LOADS

APPLIANCE	R	Y	B.
UNIT UNIT FAN, FRONT AREA	2	2	-
UNIT UNIT FAN, REAR AREA		2	
UNIT UNIT BATTERY ROOM			1
STORAGE BATTERY ROOM	5		
BATTERY BATTERY ROOM			1
HORNWOODS BATTERY	8.5W	11	11
HORNWOODS BATTERY	20KW	26	26
HORNWOODS BATTERY	4 KW	5.5	5.5
LOBBY FAN			1
ROOF FAN			1
TOTAL ALL MATERIALS	585	66.5	66.5
TOTAL HORNWOODS	5	1	1

AIR CHANGE RATES

- GROUND FLOOR AREA:
 - WINTER: 30 PER HOUR
 - SUMMER: 60 PER HOUR
- DRY GOODS STORE: 12 PER HOUR
- TOILET: 4 PER HOUR
- STORAGE BATTERY: 6 PER HOUR
- REAR AREA: 6 PER HOUR



PLAN AT BASEMENT LEVEL

AIR UNIT UNIT WITH FILTER. 300 CFT.

BATTERY UNIT

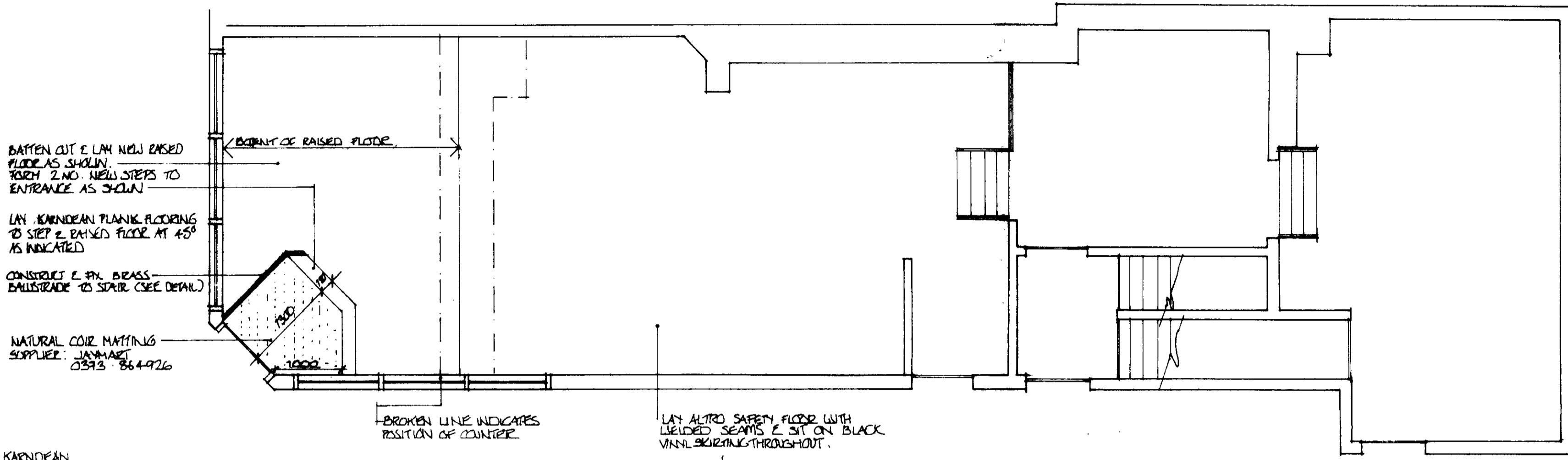
4 KW HORNWOODS BATTERY TO TOWER INCLUDING 1/2" 2 x 2 KW STAGES. MANUALLY SWITCHED. 18" DIA. TO 20" DIA.

TP 8903024

Davies Ductwork Designs
0922 57817

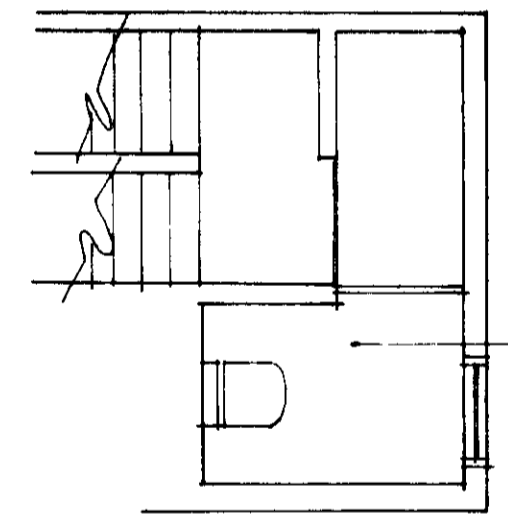
LONDON BOROUGH OF CAMDEN
TOWN AND COUNTRY PLANNING ACTS
10 JUL 1989
PLANS NOTIFIED ON BEHALF OF THE ENVIRONMENT

BY: COPPIN TONY'S PRICE
105, MANCHESTER RD
LONDON, N.W.1
PERMITTED VENTILATION SYSTEM
DATE: 10.9.88 SCALE: 1:50. DRBN
REV: 40. REV: 855/100



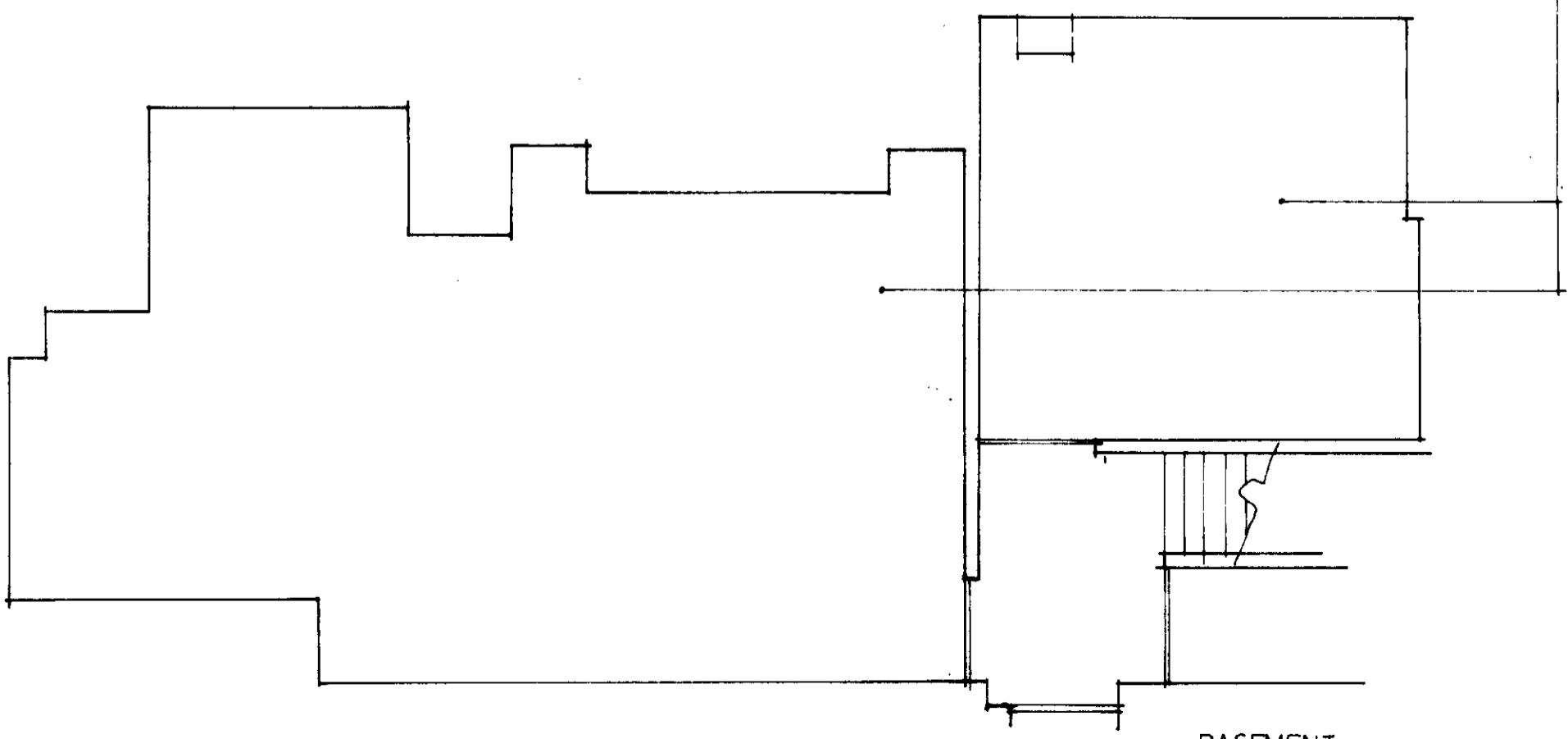
KARNDIEN
UNIT 4
MUCKLOW TRADING ESTATE
HALSOWEN
W. MIDLANDS
TEL. 021 550 9131

GROUND FLOOR



SEMI BASEMENT

LAY ALTRIO SAFETY FLOOR THROUGHOUT WITH WELDED SEAMS & SIT ON VINYL SKIRTING



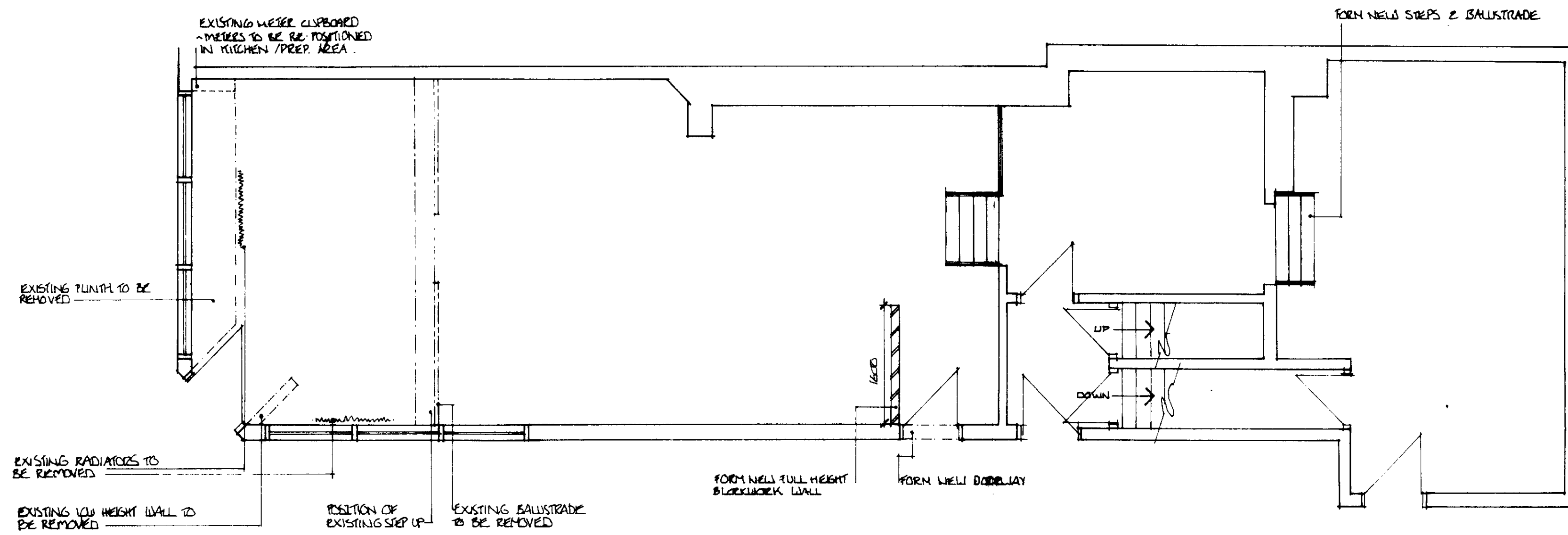
BASEMENT

LONDON BOROUGH OF CAMDEN
TOWN AND COUNTRY PLANNING ACTS
10 JUL 1989
PLANS APPROVED
~~NOT APPROVED~~
ON BEHALF OF THE COUNCIL

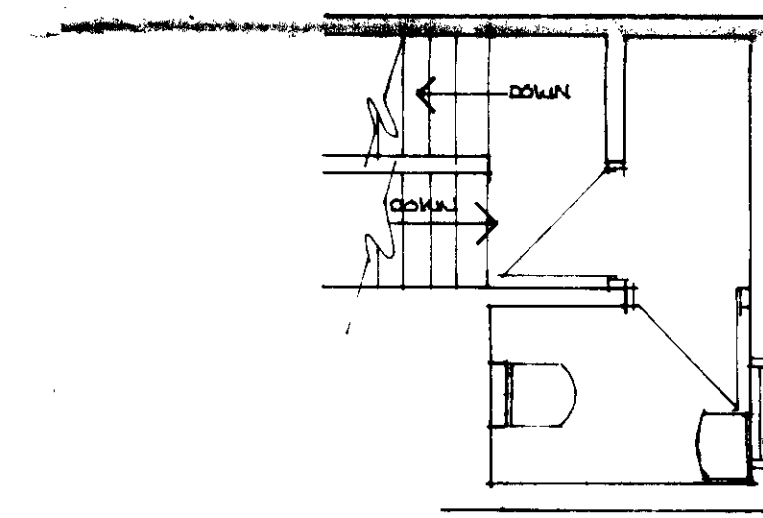
CTP/8903024

REVISION A FLOORING SPEC. (TIMBER VINYL)
REVISED

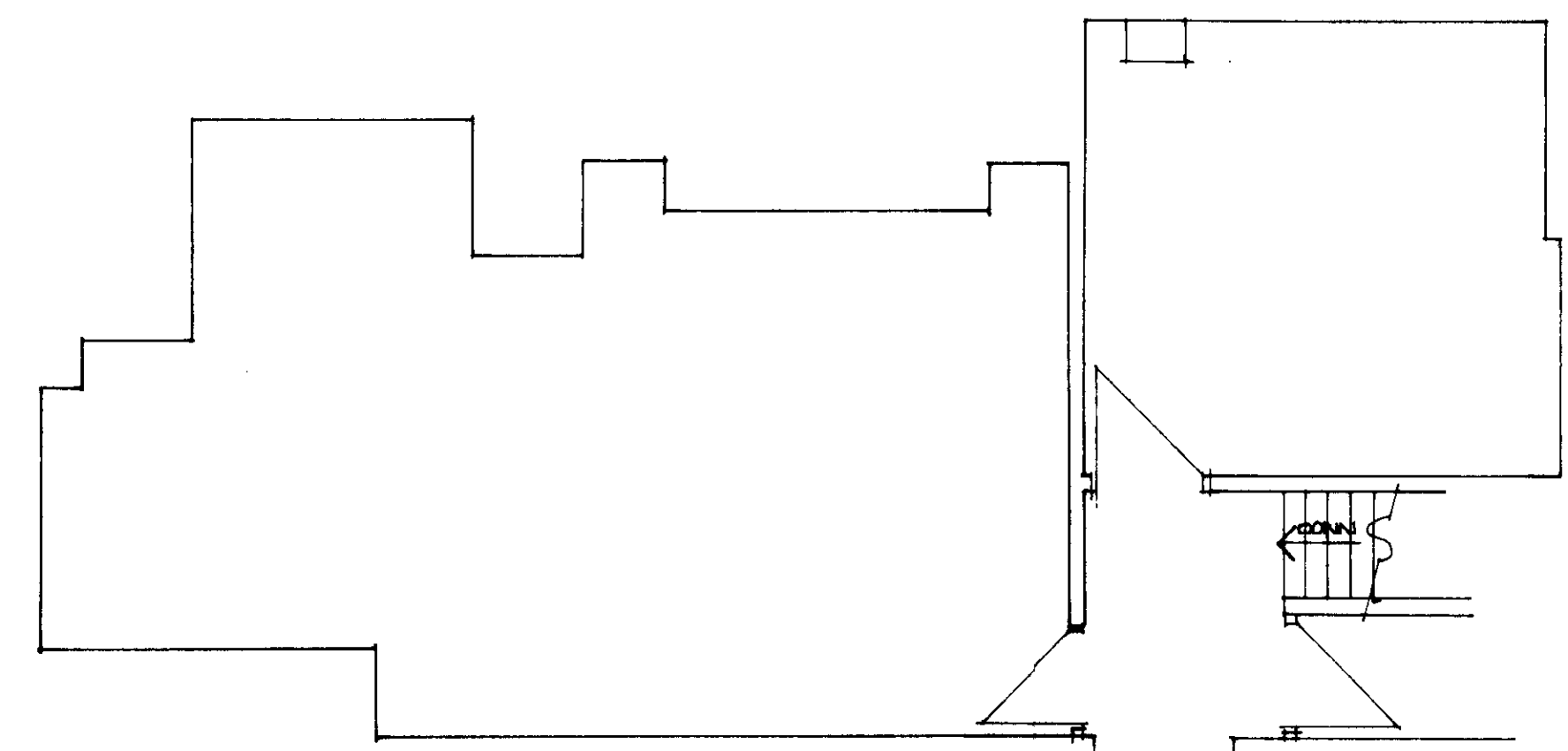
PROJECT	CAPTAIN TONY'S PIZZA 105 HAMPSTEAD RD LONDON NW1
TITLE	FLOOR FINISHES
SCALE	1:50
DATE	28.8.88
DRAWN BY	D FRANKS
DRWG. NO.	DF/100/03



GROUND FLOOR



SEMI BASEMENT

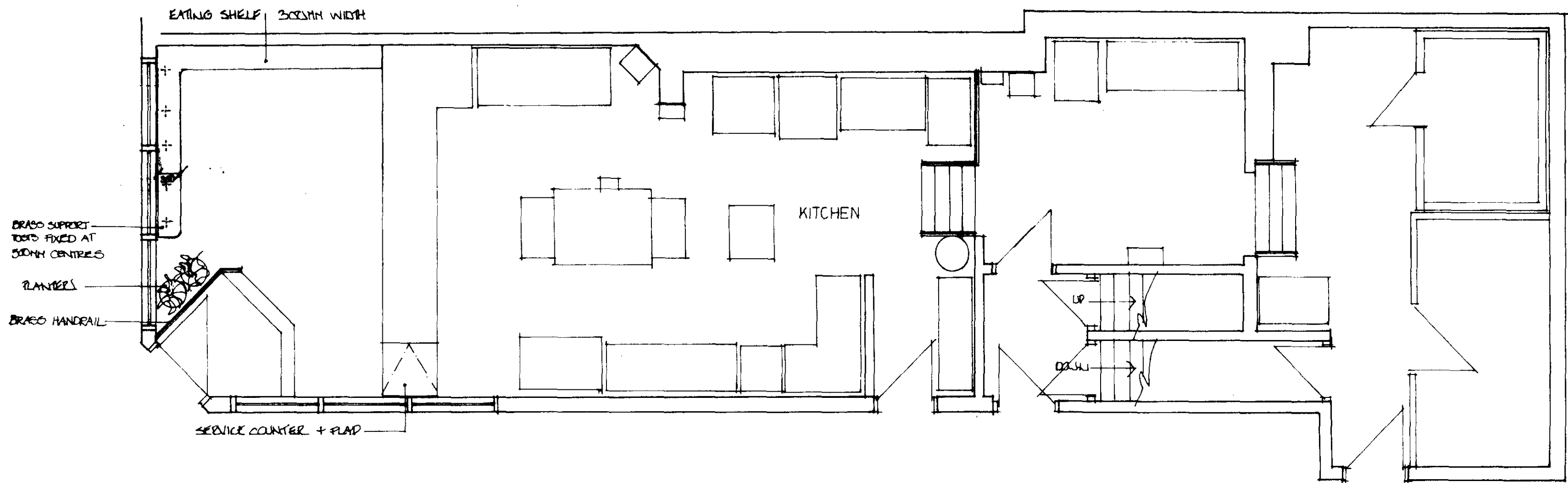


BASEMENT

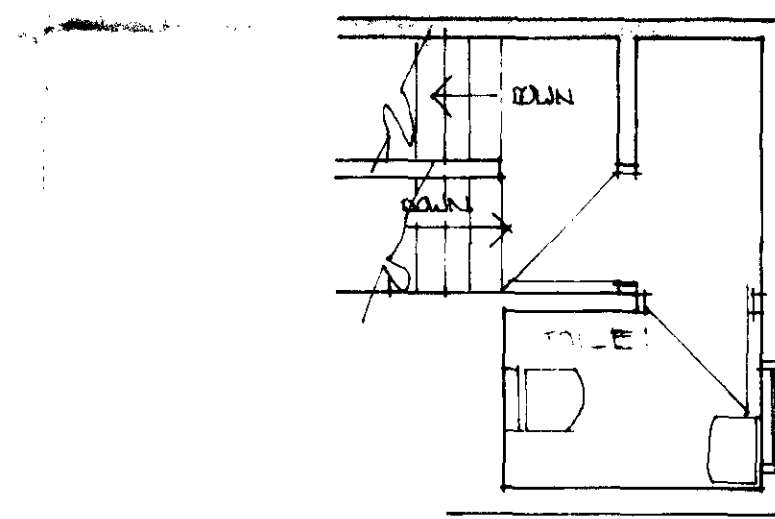
LONDON BOROUGH OF CAMDEN
 TOWN AND COUNTRY PLANNING AUTHORITY
 10 JUL 1989
 PLANS ~~NOT~~ APPROVED
 ON BEHALF OF THE COUNCIL

TP 89 03024

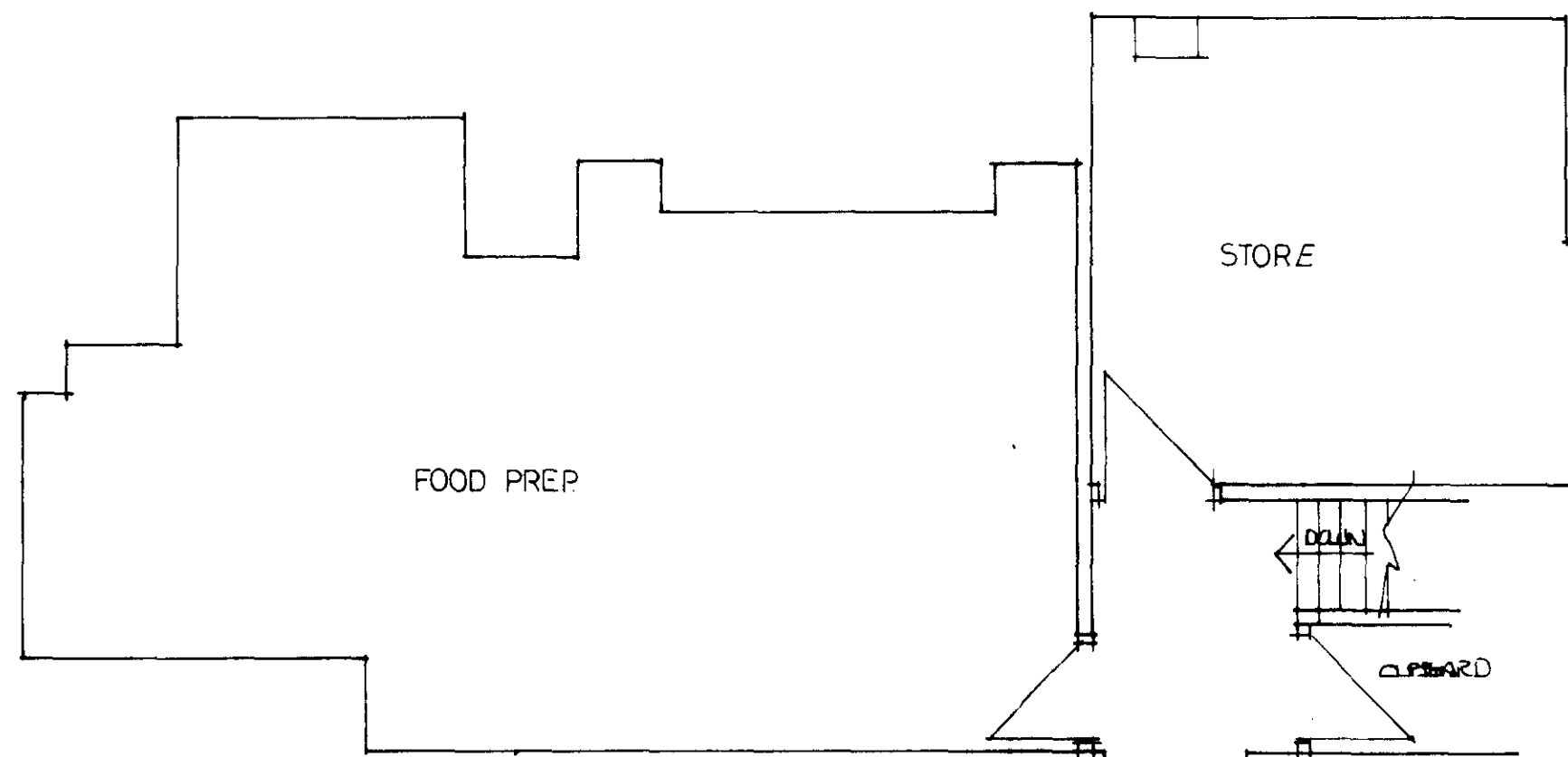
PROJECT	CAPTAIN TONY'S PIZZA 105 HAMPSTEAD RD. LONDON NW1
TITLE	BUILDING WORKS
SCALE	1:50
DATE	28.8.88
DRAWN BY	DFRANKS
DRWG. NO.	DF/100/02



GROUND FLOOR



SEMI BASEMENT



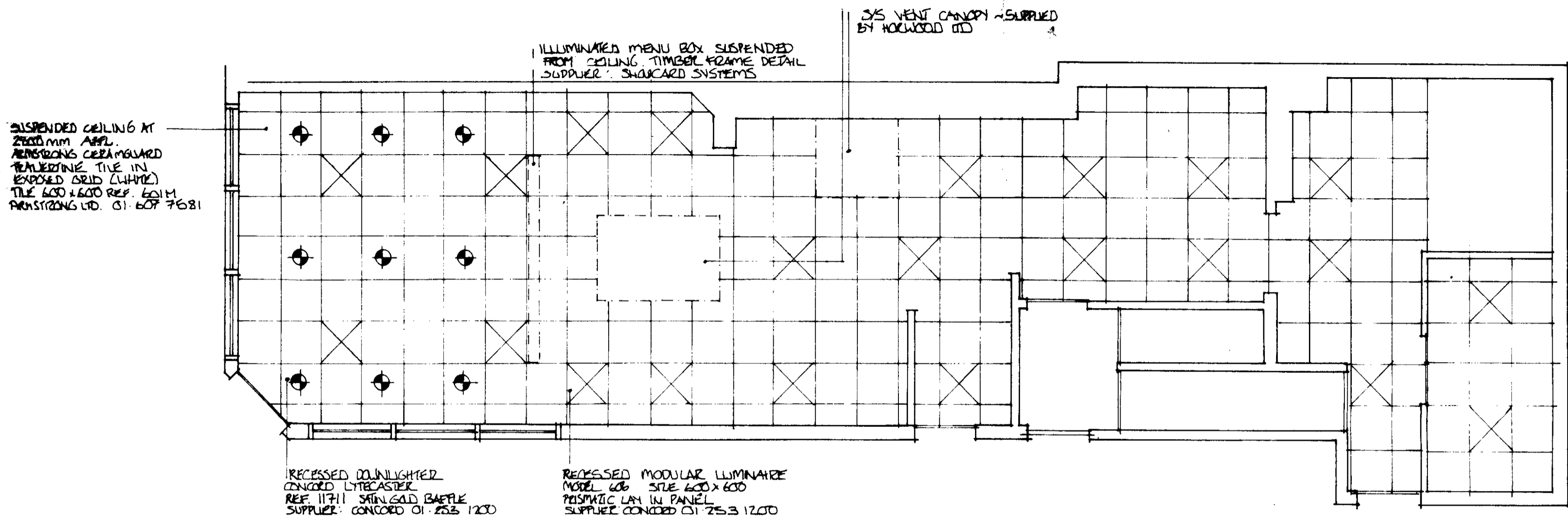
BASEMENT

REVISION A STOOLS OMITTED.
EATING SHELVES REVISED

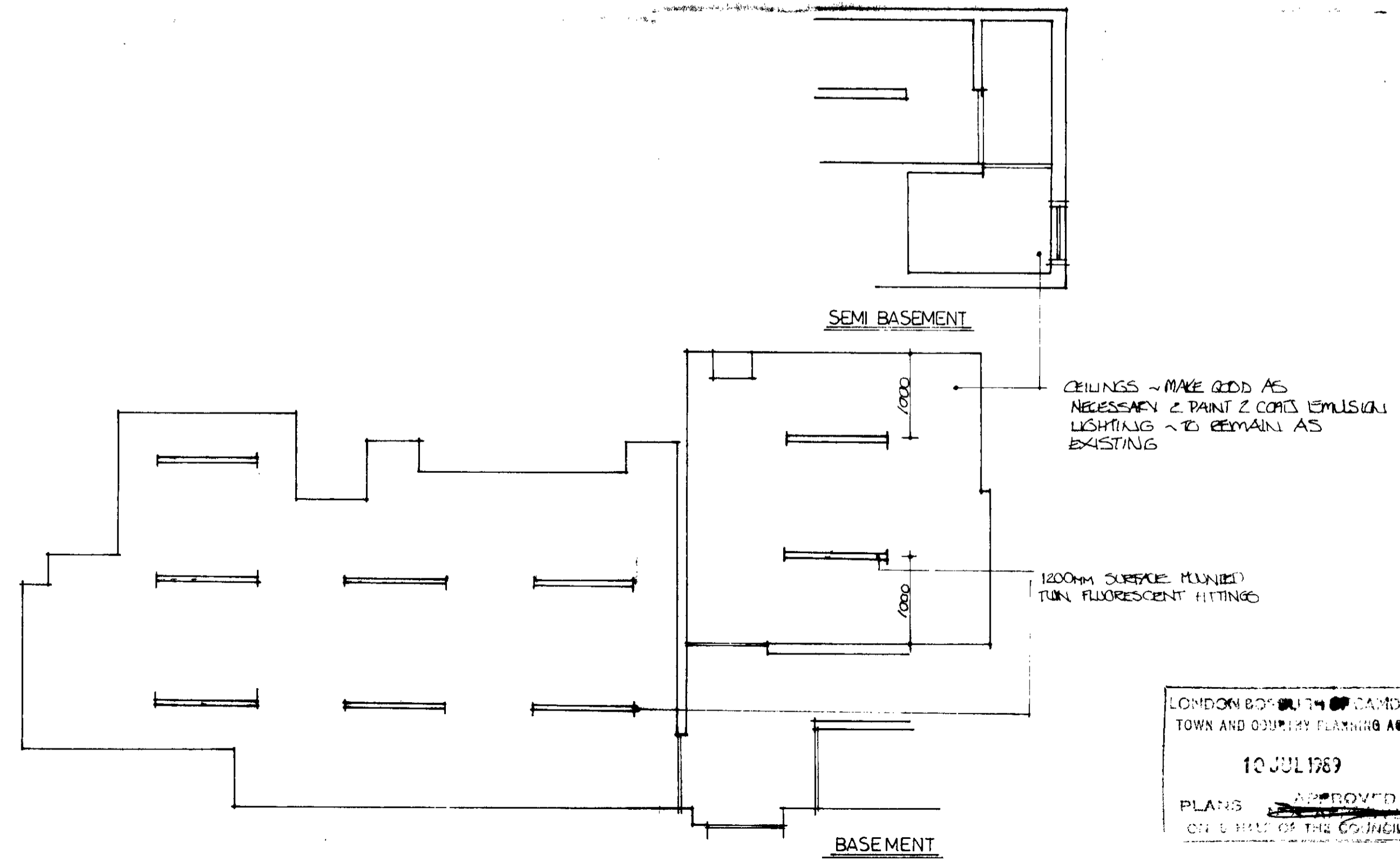
TP 8903024

LONDON BOROUGH OF CAMDEN
TOWN AND COUNTRY PLANNING ACT 8
10 JUL 1989
APPROVED
PLANS ~~NOT APPROVED~~
ON BEHALF OF THE COUNCIL

PROJECT	CAPTAIN TONY'S PIZZA 105 HAMPSTEAD RD. LONDON NW1
TITLE	LAYOUT PLAN
SCALE	1:50
DATE	28 8 88
DRAWN BY	D FRANKS
DRWG. NO.	DF/100/01 A



GROUND FLOOR



REVISION A LIGHTING ADDED TO BASEMENT & PUBLIC AREAS.

TP 89 0302.4

PROJECT	CAPTAIN TONY'S PIZZA 105 HAMPSTEAD ROAD LONDON NW1
TITLE	CEILING / LIGHTING PLAN
SCALE	1:50
DATE	28.8.88
DRAWN BY	D FRANKS
DRWG NO.	DF/100/04