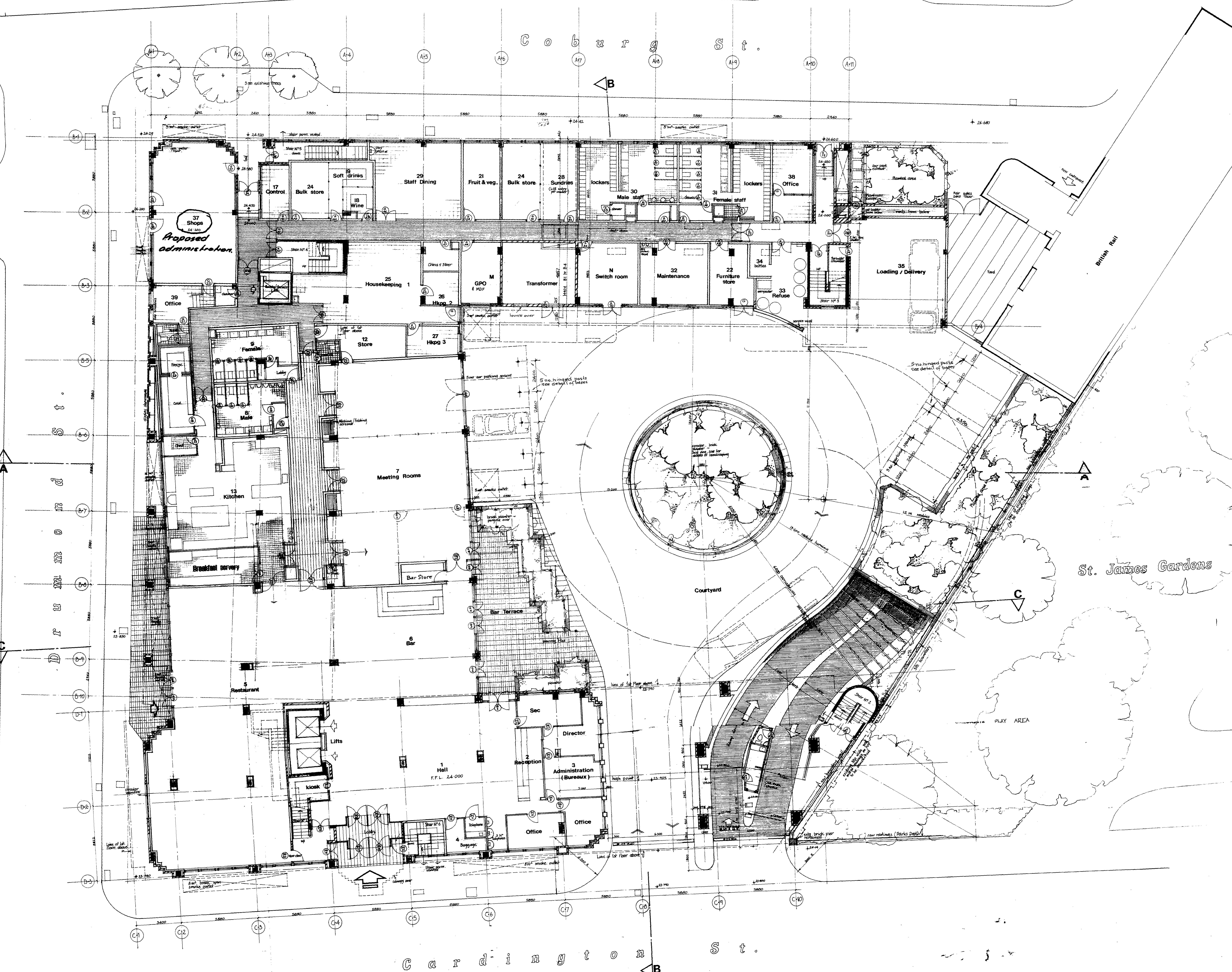


Contractors must verify all dimensions on site before commencing any work or shop drawings.
 Figured dimensions are to be used in preference to scaled dimensions.
 If this drawing exceeds the optimum taken in any way the architect is to be informed before the work is started.

Revisions

Rev. No.	Description	Date	By
U	Redrawing	17/07/84	
V	Public Toilets, kitchen/field covered revised. Bar area revised. Bar area added. Telephone/dungaree area revised. Kiosk added.	19.4.84	
W	Technical detail revised. Corridors - 84/83 + 84/82, repositioned. Repositioned entrance from transformer to St James. Bar + Reception counter rev.	22.10.84	
X	Public lift revised to cater front corridor. Signs added. Hkpg 1. Doors added to staff showers.	4.11.84	
Y	Toilet, staff shower + cleaners cubby revised. Double doors added to Mechanical Room corridor. Revised Room doors revised.	12.12.84	
Z	Shower G. revised. Escape area behind Loading bay revised.	7.3.85	
A1	Top of ramps + Bar Parkings control revised. Rear wall made 2.65 m. Rear wall against Bar area revised. Lift + Kiosk revised.	1.5.85	
B1	Bulk store + Fruit + veg. stores revised. LBB intake shown. Bar area door revised.	18.10.85	
C1	Wall - GPO/transformer revised. Hoovers omitted to save space.	9.12.85	
D1	Boundary wall to St James revised.	24.02.86	
E1	Door to Furniture Store (Glasgow) Screen Office 3A. Reception Offices. Bar Store. St. James Kitchen. Wash Cold. Cold. Wash Wine. Shop. Bar. Shop. Office. Toilet. Male toilet lobby. Transformer. Evf door. Housekeeping parking pots.	20/4/86	



R. SEIFERT & PARTNERS
 Chartered Architects and Town Planners
 164 Shaftesbury Avenue, London WC2H 8HZ
 Telephone: 01-242 1644
 Telex: 264641 Seiferts G

Job TP880241
IBIS HOTEL EUSTON

Title
Ground Floor Plan

Drawn
 Scale 1:100
 Date Oct. 84
 Drawing No. 2633.201
 Rev. No. E.2

CONTRACTOR'S USE ONLY
 LONDON
 3/11/84
 1/1/85