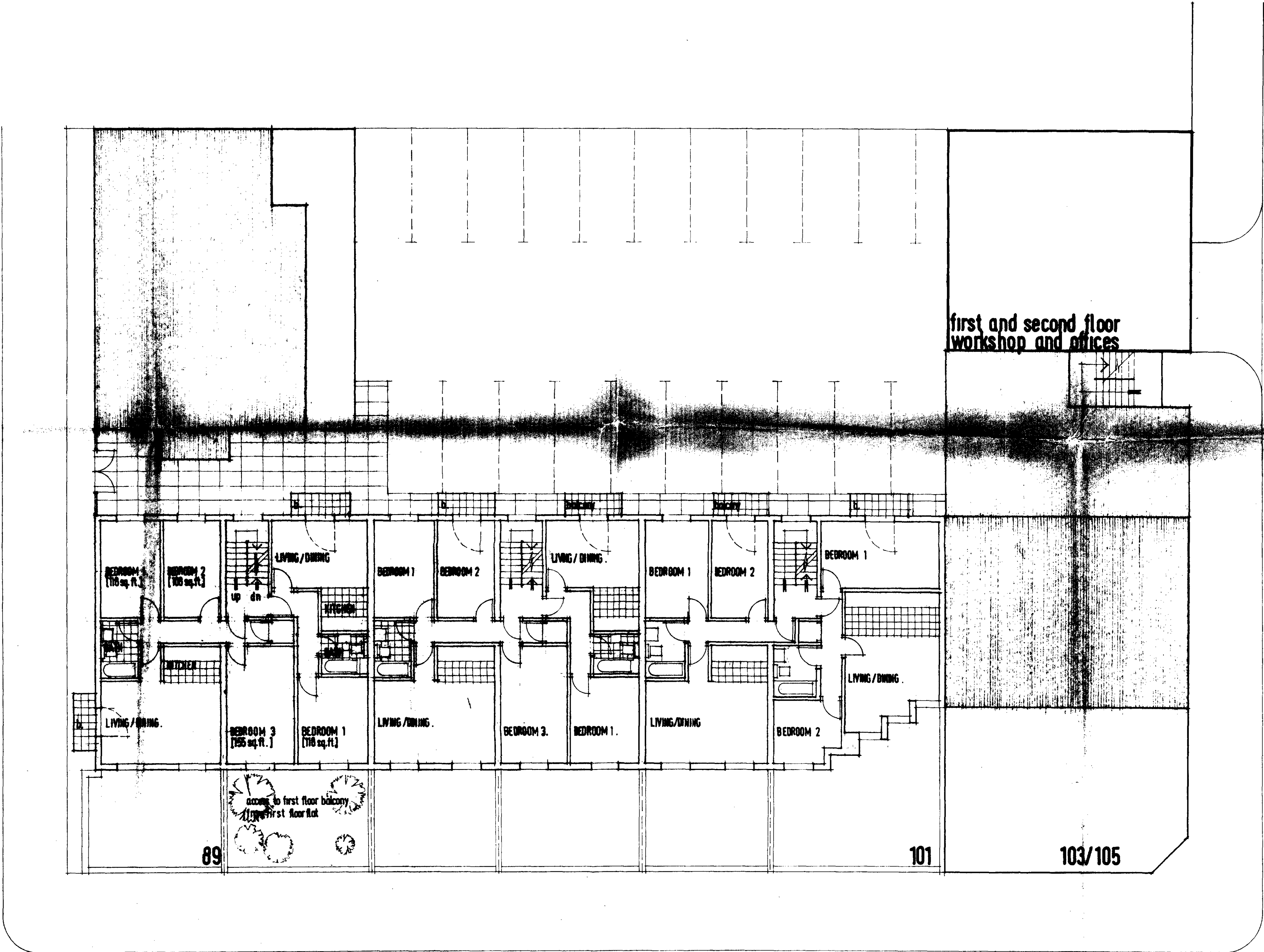


LONDON BOROUGH OF CAMDEN
TOWN AND COUNTRY PLANNING ACTS
18 FEB 1986
APPROVED
PLANS NOT APPROVED
ON BEHALF OF THE COUNCIL

GROUND FLOOR PLAN.

TP 8500523 R5
89-101 HAMPSTEAD ROAD AND 1a NETLEY STREET NW
Org. No. PB/1/1b
Scale: 8ft. to 1mch.
Rev. B. General revisions. Date: 26.1.1986



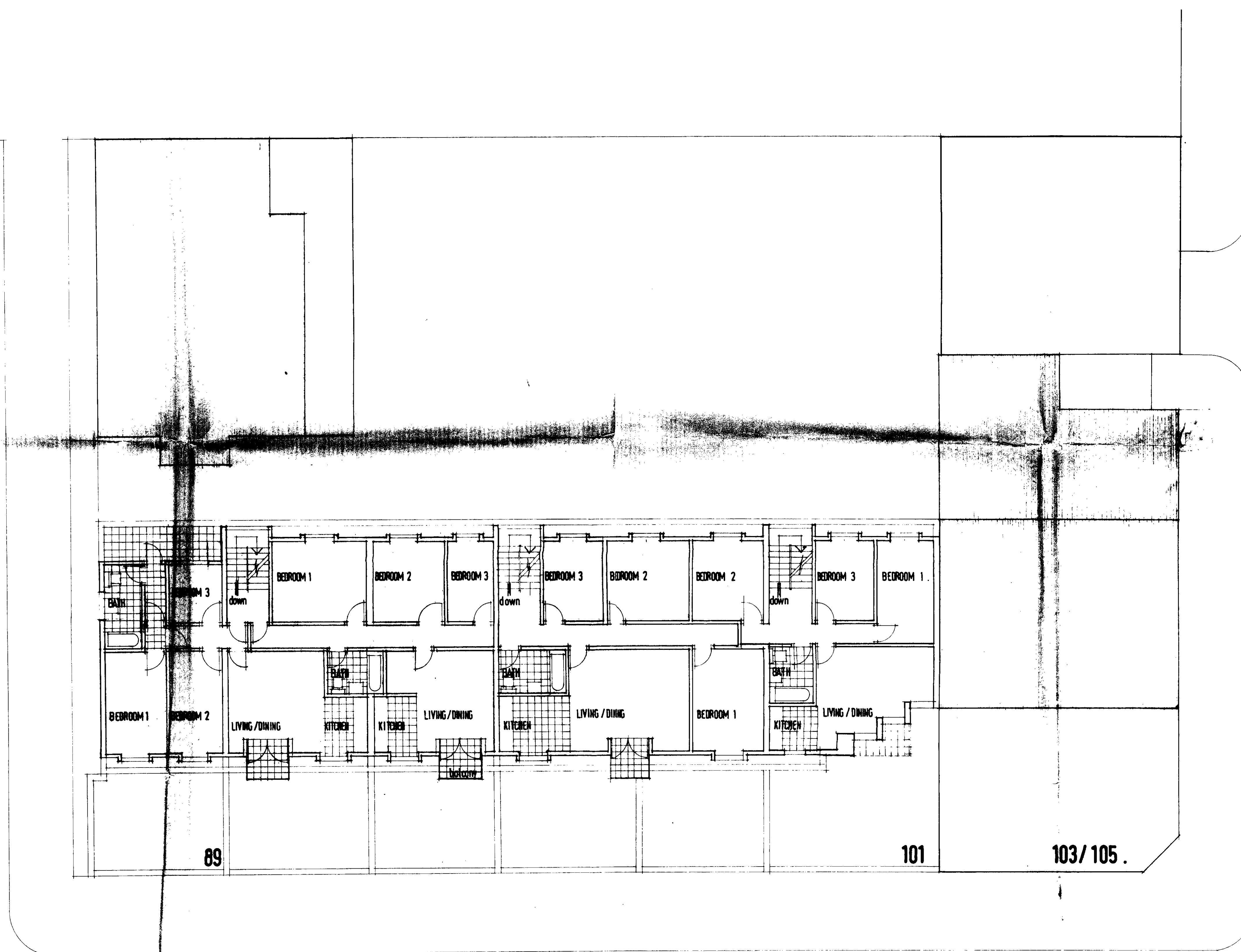
FIRST AND SECOND FLOOR PLANS.

89-101 HAMPSTEAD ROAD 1a NETLEY STREET, NW1.
 Drg. No. PB/1/2^A
 Scale: 8 ft. to 1 inch

Rev. A. Dwelling unit type altered, and general alterations. Date: 26.7.1985.

TP 8500523 R5

LONDON BOROUGH OF CAMDEN
 TOWN AND COUNTRY PLANNING ACTS
 18 FEB 1986
 APPROVED
 PLANS ON BEHALF OF THE COUNCIL

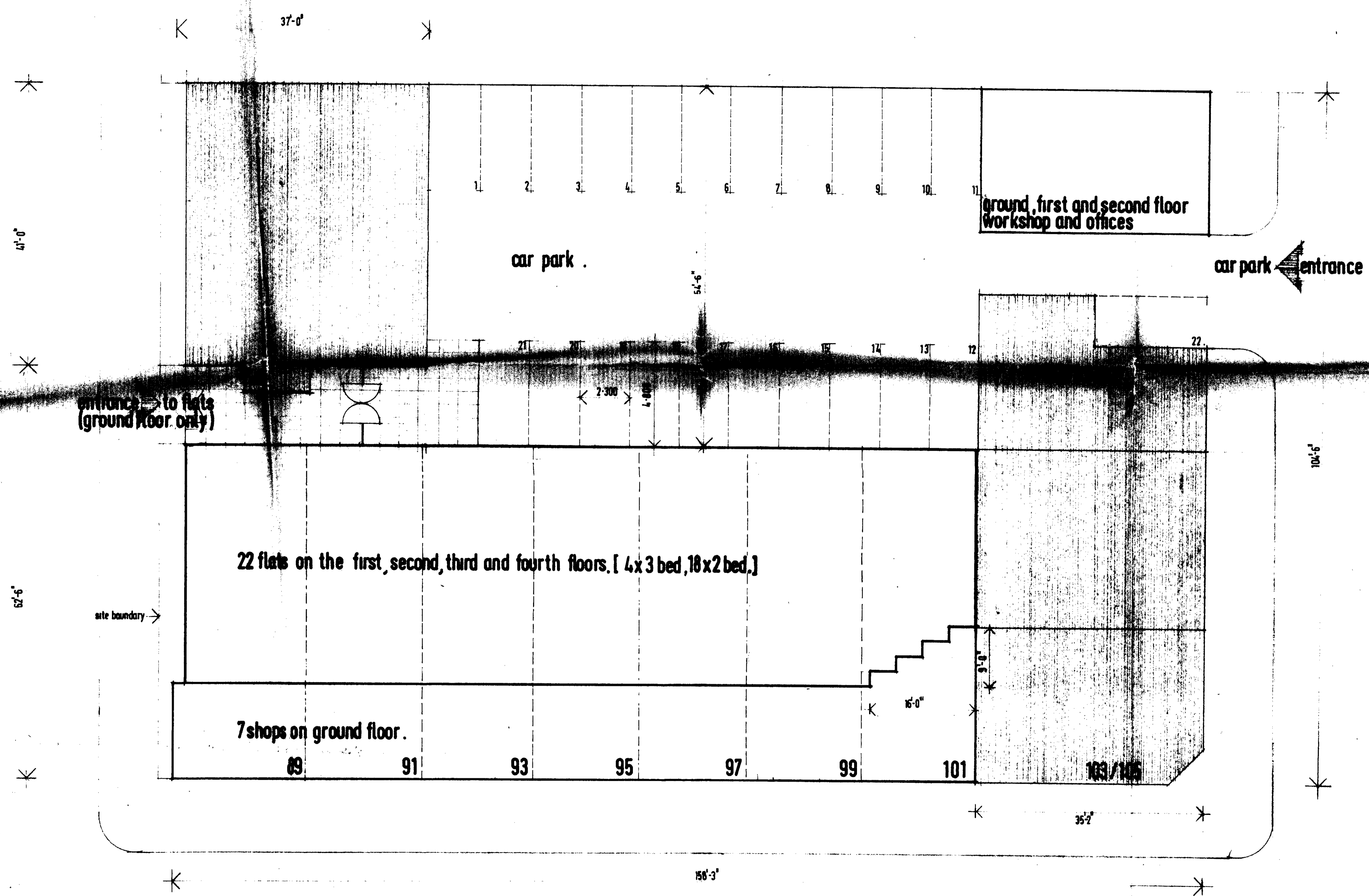


FOURTH FLOOR PLAN [4 x 3-bed flats.]

89-101 HAMPSTEAD ROAD AND 1a NETLEY STREET NW1.
 Org. No. PB/1/3.

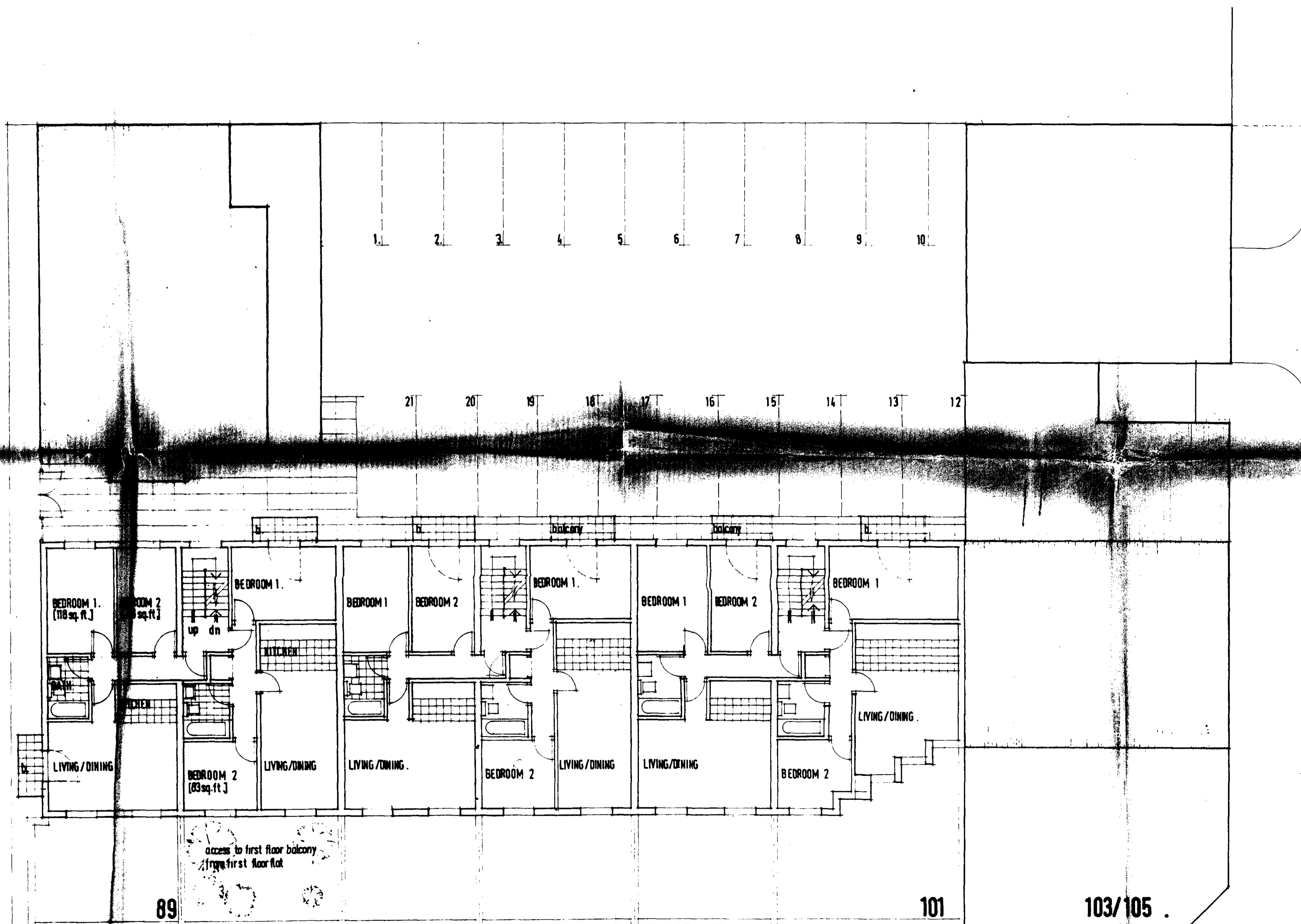
LONDON BOROUGH OF CAMDEN
 TOWN AND COUNTRY PLANNING ACTS
 18 FEB 1986
 PLANS ~~NOT APPROVED~~ APPROVED
 ON BEHALF OF THE COUNCIL

TP 2500523R5



89-101 HAMPSTEAD ROAD
 Org.No. PB/1/1.

APP 8500523

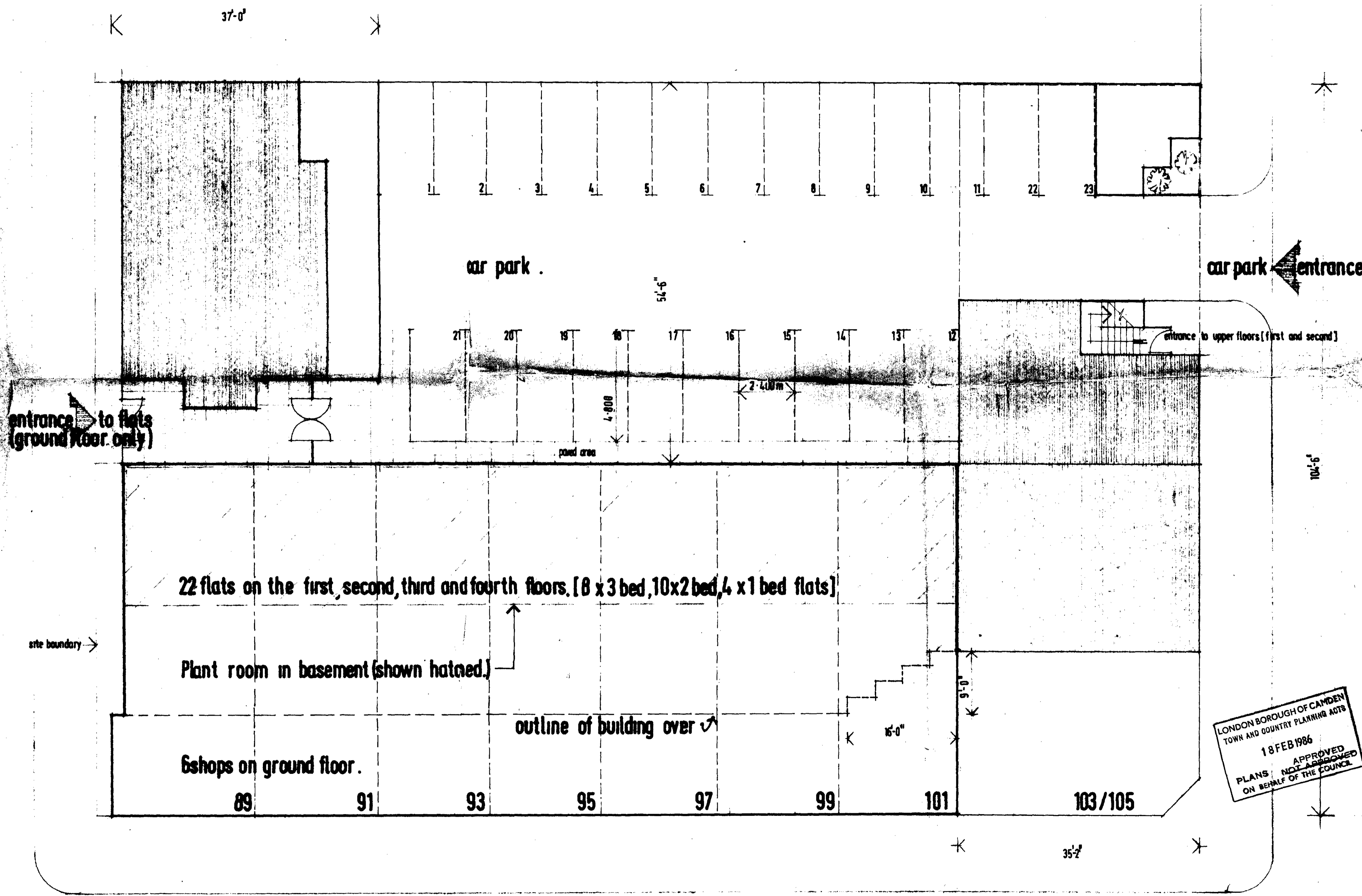


LONDON BOROUGH OF CAMDEN
 TOWN AND COUNTRY PLANNING ACTS
 18 FEB 1986
 APPROVED
 PLANS ~~NOT~~ FORWARDED
 ON BEHALF OF THE COUNCIL

THIRD FLOOR PLAN [6 x 2-bed flats]

89-101 HAMPSTEAD ROAD AND 1a NETLEY STREET NW1.
 Drg. No. PB/1/4.
 Scale: 8 ft to 1 inch.

TP 8500523R5

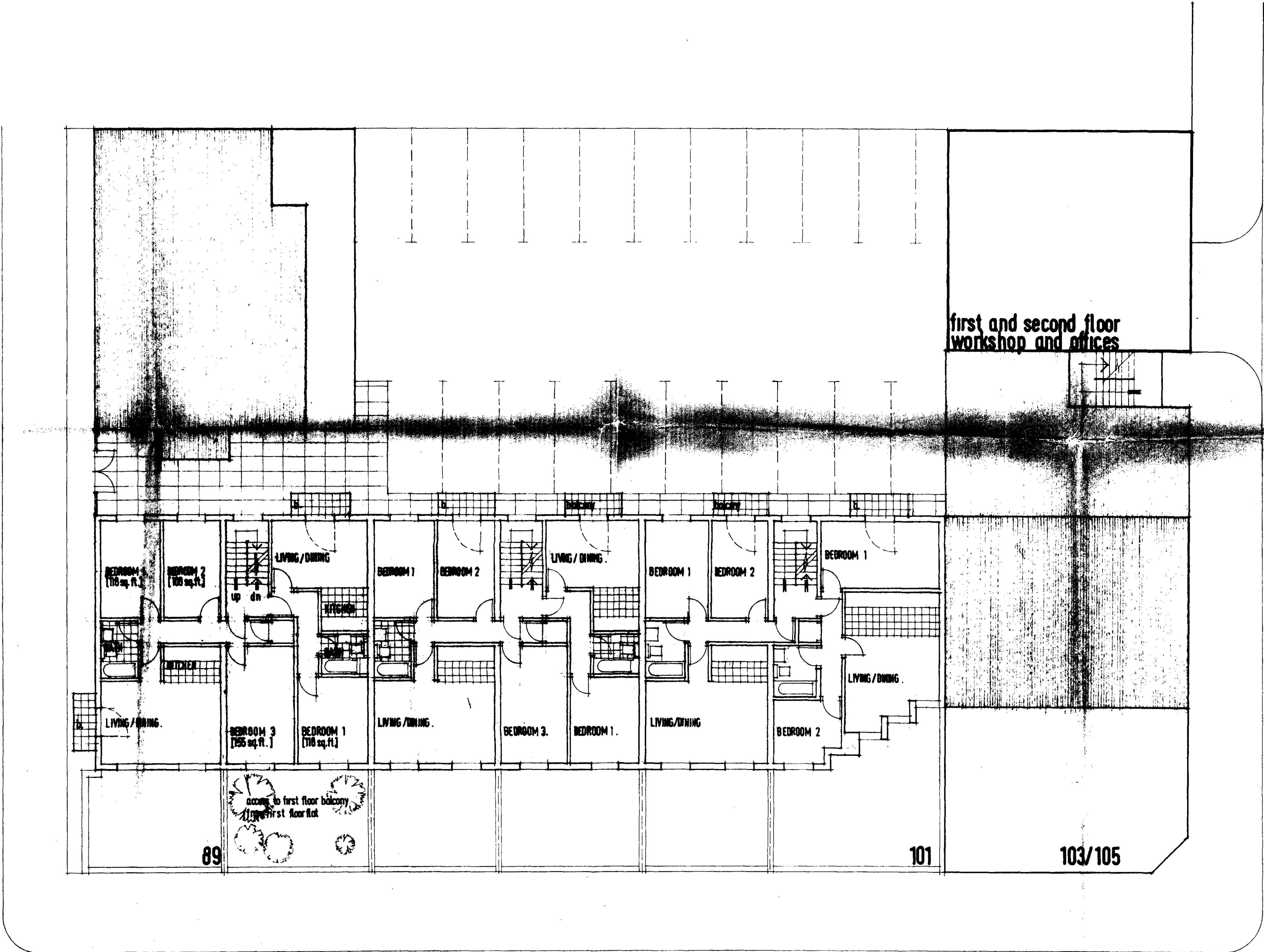


GROUND FLOOR PLAN.

LONDON BOROUGH OF CAMDEN
TOWN AND COUNTRY PLANNING ACTS
18 FEB 1986
APPROVED
PLANS NOT APPROVED
ON BEHALF OF THE COUNCIL

89-101 HAMPSTEAD ROAD AND 1a NETLEY STREET NW
Org. No. PB/1/1b
Scale: 8ft. to 1 inch.
Rev. B. General revisions. Date: 26.1.1986

TP 8500523 R5

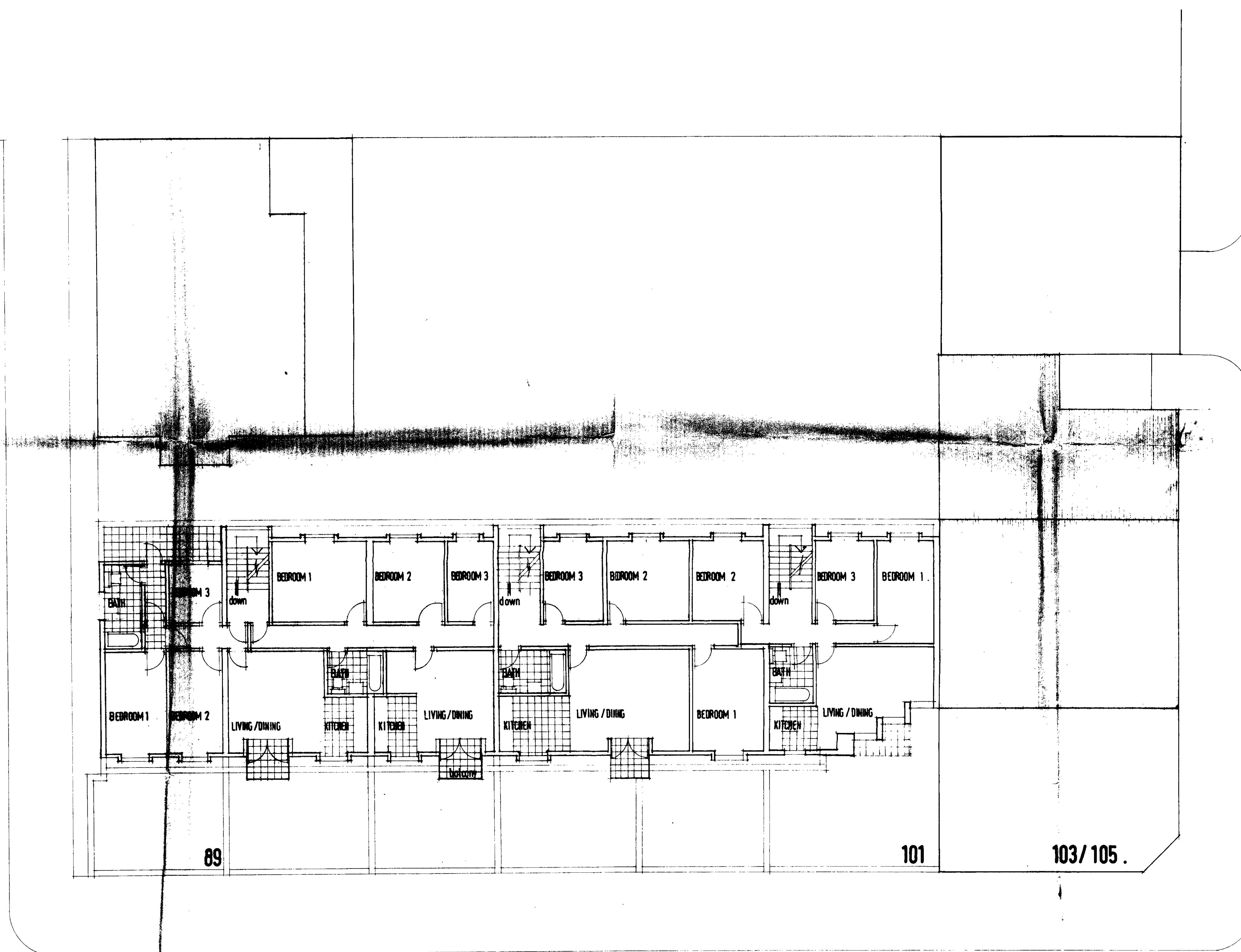


FIRST AND SECOND FLOOR PLANS.

89-101 HAMPSTEAD ROAD 1a NETLEY STREET, NW1.
 Drg. No. PB/1/2^A
 Scale: 8 ft. to 1 inch

Rev. A. Dwelling unit type altered, and general alterations. Date: 26.7.1985.

TP 8500523 R5

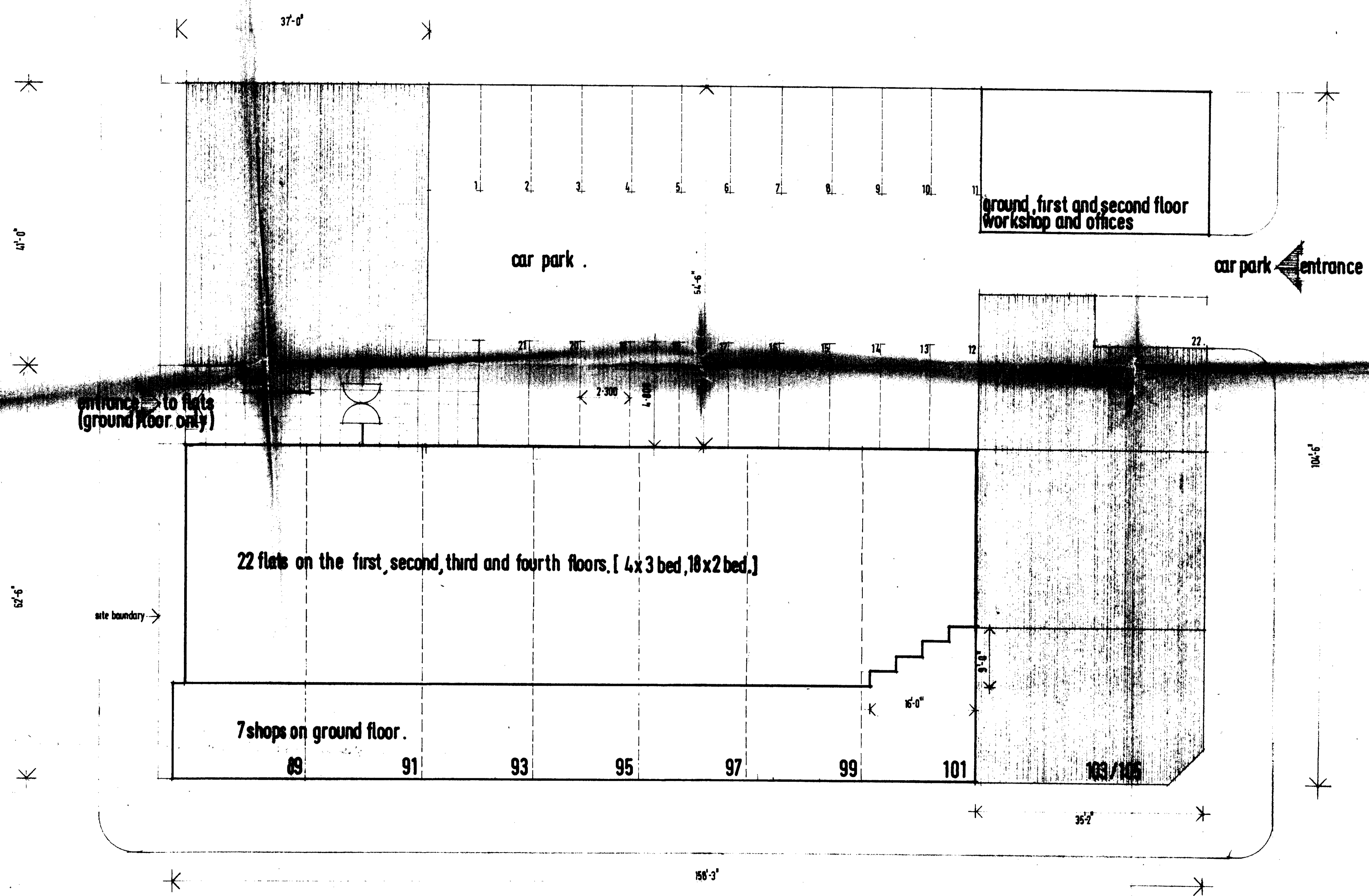


FOURTH FLOOR PLAN [4 x 3-bed flats.]

89-101 HAMPSTEAD ROAD AND 1a NETLEY STREET NW1.
 Org. No. PB/1/3.

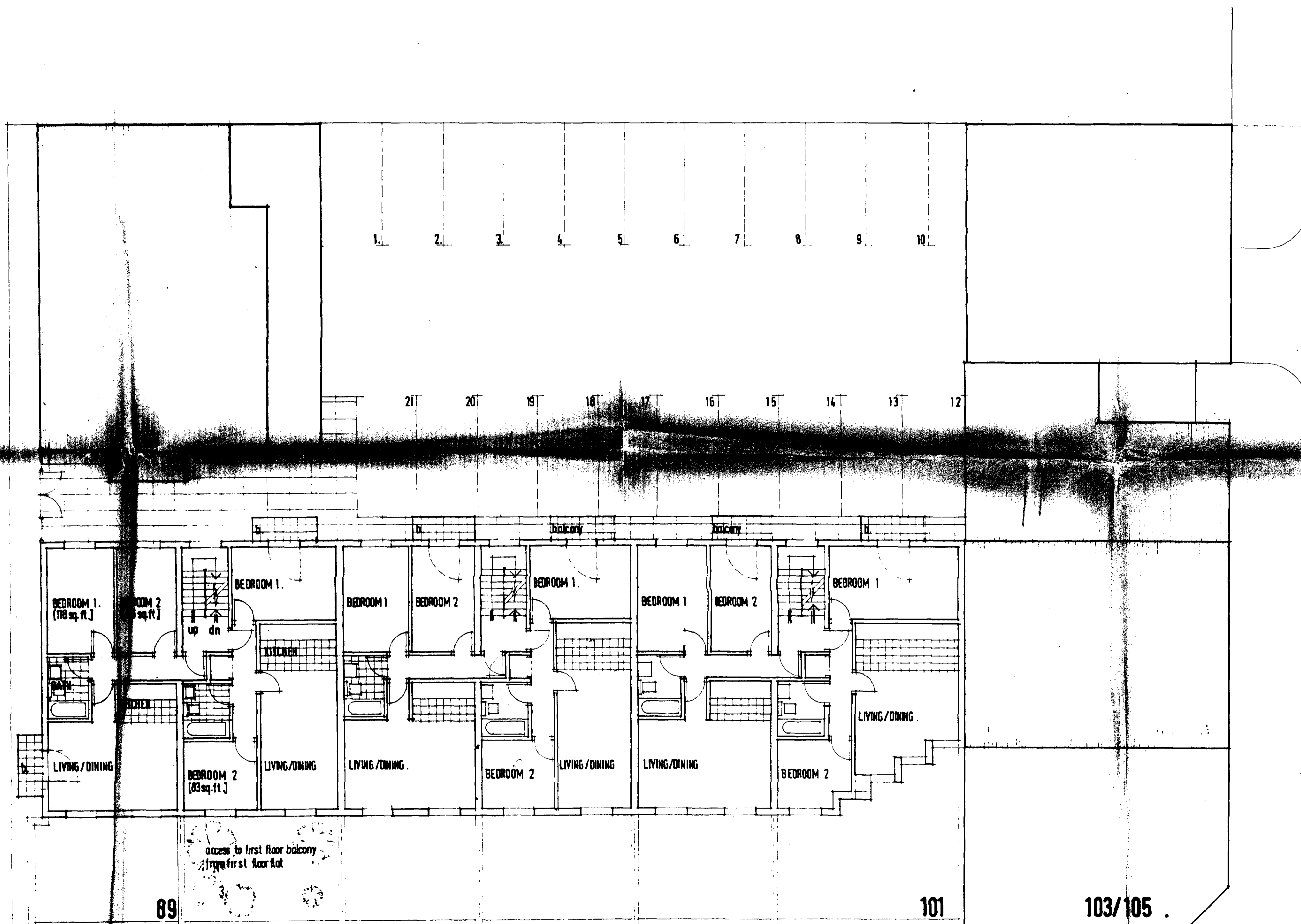
LONDON BOROUGH OF CAMDEN
 TOWN AND COUNTRY PLANNING ACTS
 18 FEB 1986
 PLANS APPROVED
 ON BEHALF OF THE COUNCIL

TP 2500523R5



89-101 HAMPSTEAD ROAD
 Org.No. PB/1/1.

APP 8500523



LONDON BOROUGH OF CAMDEN
 TOWN AND COUNTRY PLANNING ACTS
 18 FEB 1986
 APPROVED
 PLANS ~~NOT~~ FORWARDED
 ON BEHALF OF THE COUNCIL

THIRD FLOOR PLAN [6 x 2-bed flats]

89-101 HAMPSTEAD ROAD AND 1a NETLEY STREET NW1.
 Drg. No. PB/1/4.
 Scale: 8 ft to 1 inch.

TP 8500523R5