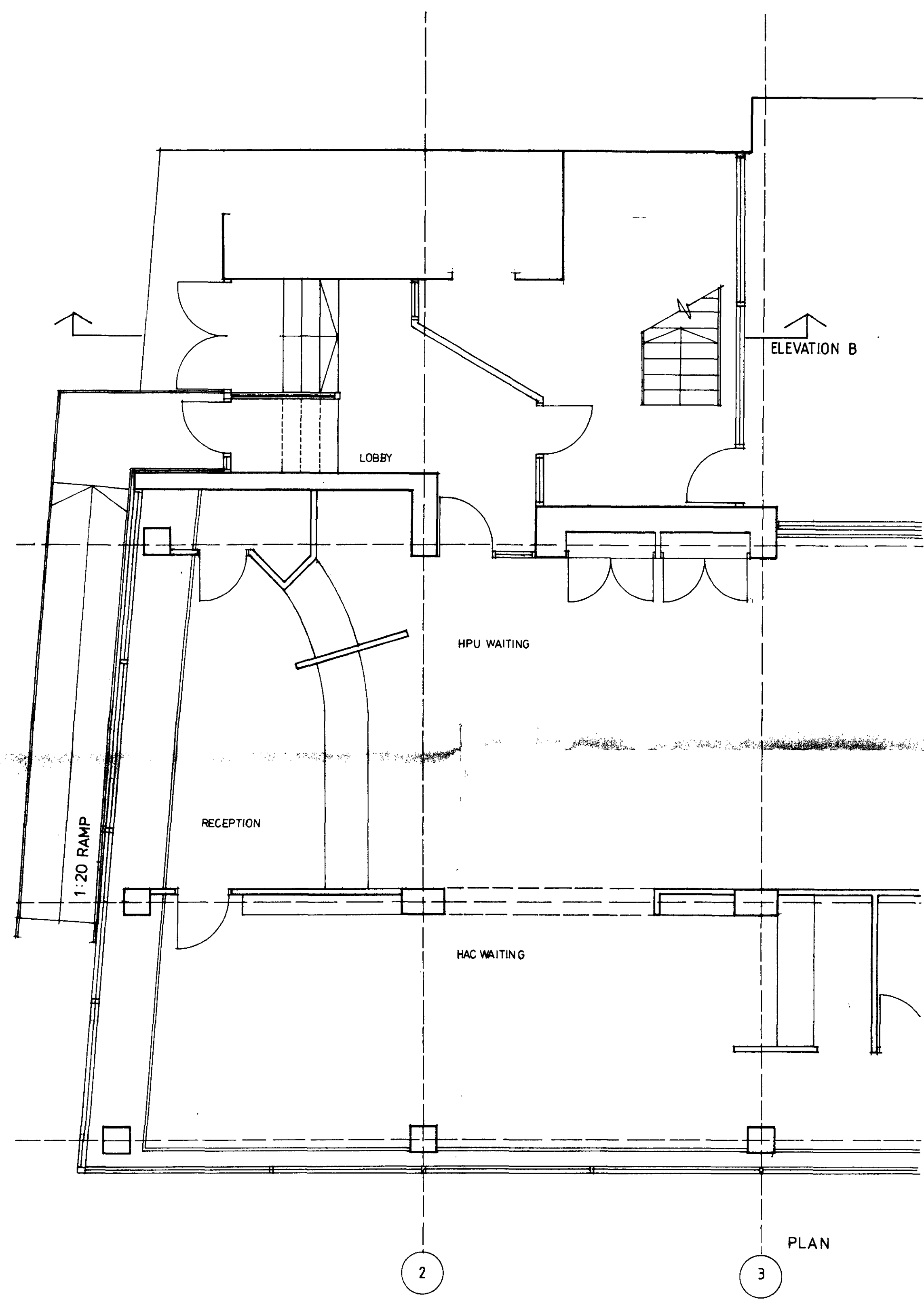


Rev. A: AMENDMENT TO ISLAND FOLLOWING CONSULTATION WITH STREET MANAGEMENT (6.96)

J.C.M.T ARCHITECTS EXMOUTH HOUSE 3 PINE STREET LONDON EC1R 0JH TELEPHONE: 0171-278 8228 FACSIMILE: 0171-278 8898	JOB TITLE REFURBISHMENT OF GROUND FLOOR OF BIDBOROUGH HOUSE FOR LONDON BOROUGH OF CAMDEN	JOB No 0113	DRWG. No PLO3	
	DRAWING TITLE OUTLINE PROPOSALS FOR PROTECTION OF CYCLE ROUTE IN MABLETON PLACE	SCALE 1:100	DATE 6.96	REV. No A
		DRAWN BY	CHECKED BY	

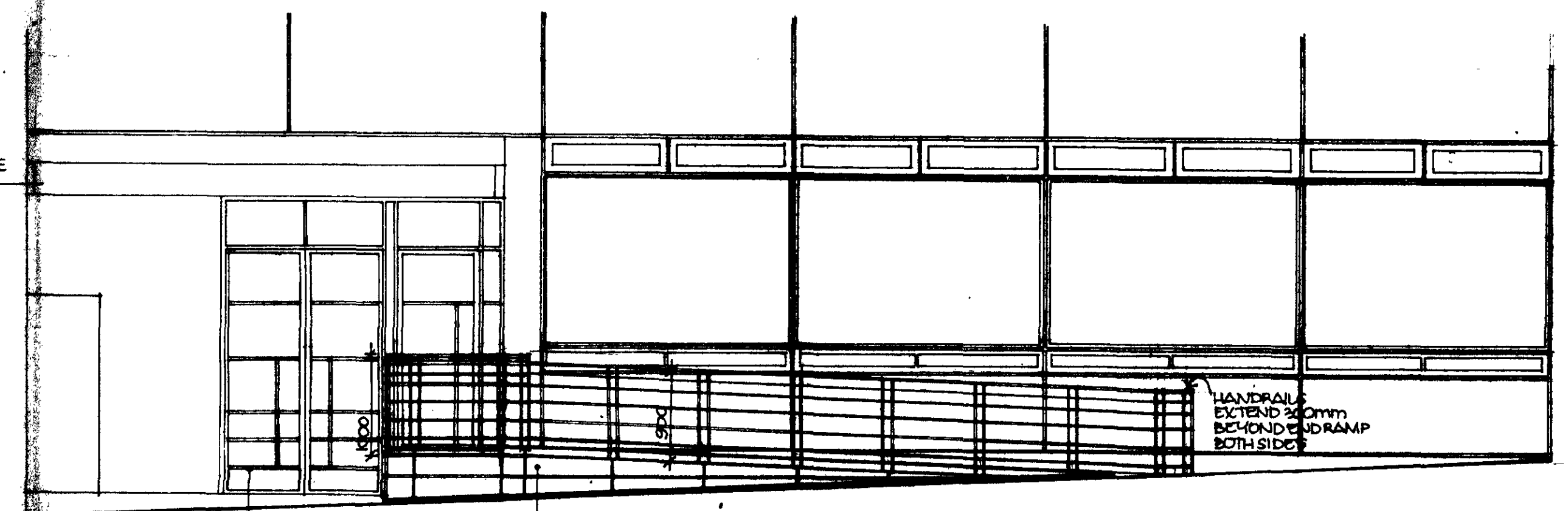
MABLEDEN PLACE

ELEVATION A



PLAN

EXISTING CANOPY UPGRADED WITH STANDARD LONDON BOROUGH OF CAMDEN SIGNAGE

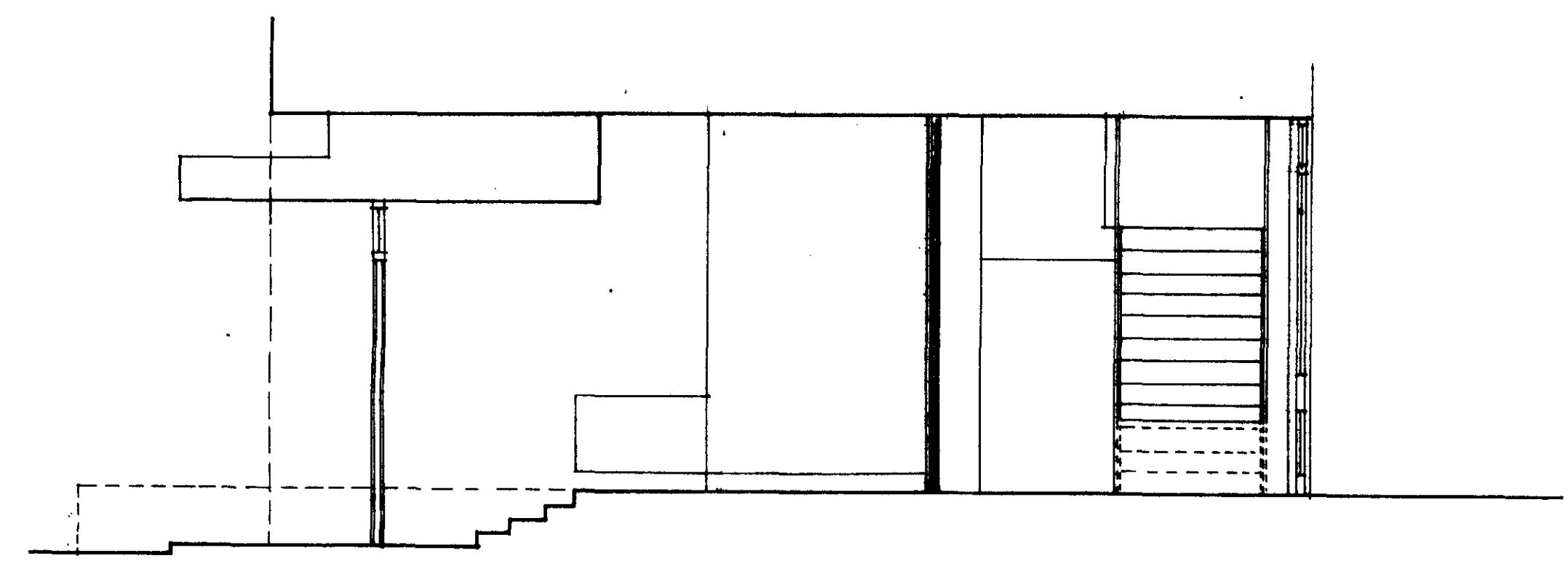


ELEVATION A

GLAZED STEEL FRAMED DOORS AND SIDE SCREEN

DISABLED ACCESS: 1:20 RAMP GALVANISED METAL RAMP C/W GALVANISED STEEL HANDRAIL/BALUSTRADINGS + INFILL PANELS BETWEEN RAMP + PAVEMENT (FINISH TO BE PAINTED DARK GREY)

HANDRAIL EXTEND 200mm BEYOND END RAMP BOTH SIDES



ELEVATION B

12 JUL 1996
PLANS APPROVED
ON BEHALF OF THE COUNCIL

P9601126 R1

LONDON BOROUGH OF
TOWN AND COUNCIL
12 JUL 1996
PLANS APPROVED
ON BEHALF OF THE COUNCIL

REVISION B: BALUSTRADINGS AMENDED (9.96)
REVISION A: RAMP BALUSTRADINGS MODIFIED, STEEL DOORS/SCREEN AMENDED (JUNE 1996)

J.C.M.T ARCHITECTS EXMOUTH HOUSE 3, PINE STREET LONDON - EC1R 0JH TELEPHONE: 071 278 8222 FACSIMILE: 071 278 8229	JOB TITLE BIDBOROUGH HOUSE REFURBISHMENT OF GROUND FLOOR FOR HPU + HAC	JOB No 0113	DRWG No PL 01
	DRAWING TITLE ENTRANCE FROM MABLEDEN PLACE - PROPOSED ALTERATIONS.	SCALE 1:50	DATE MAR 96
		DRAWN BY	CHECKED BY