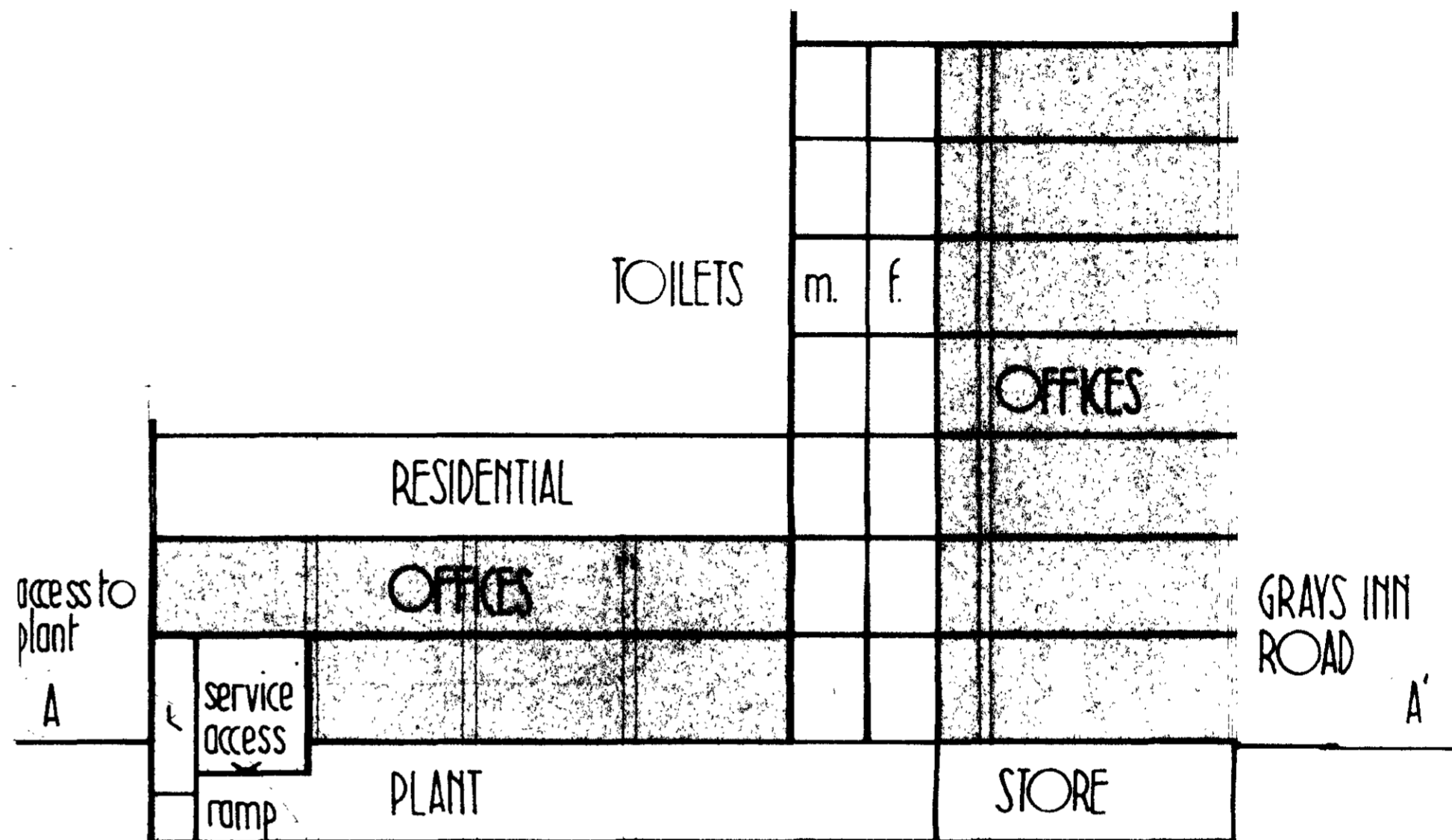
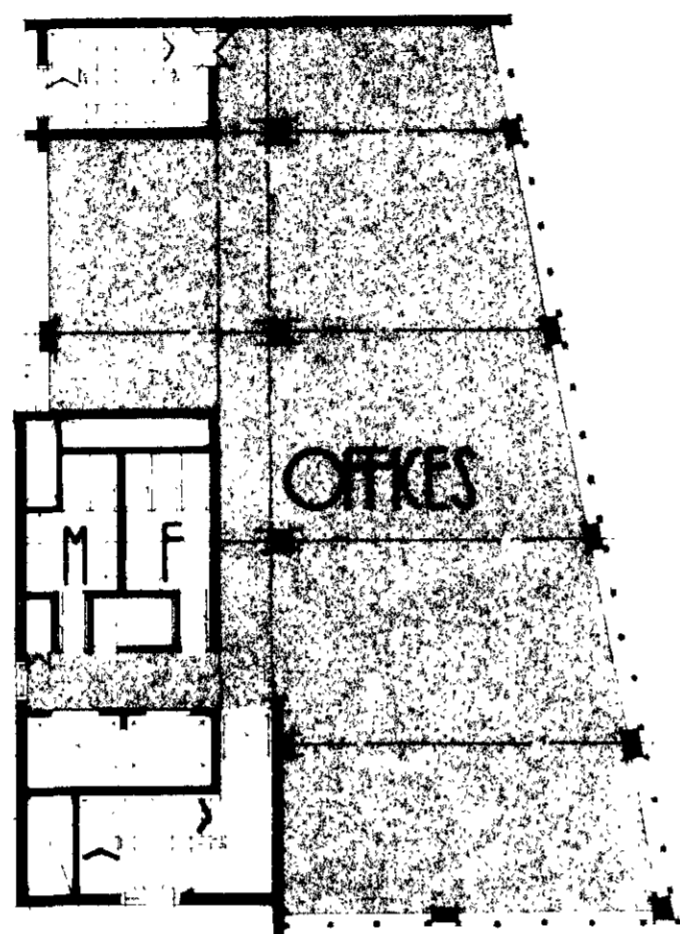


00-50

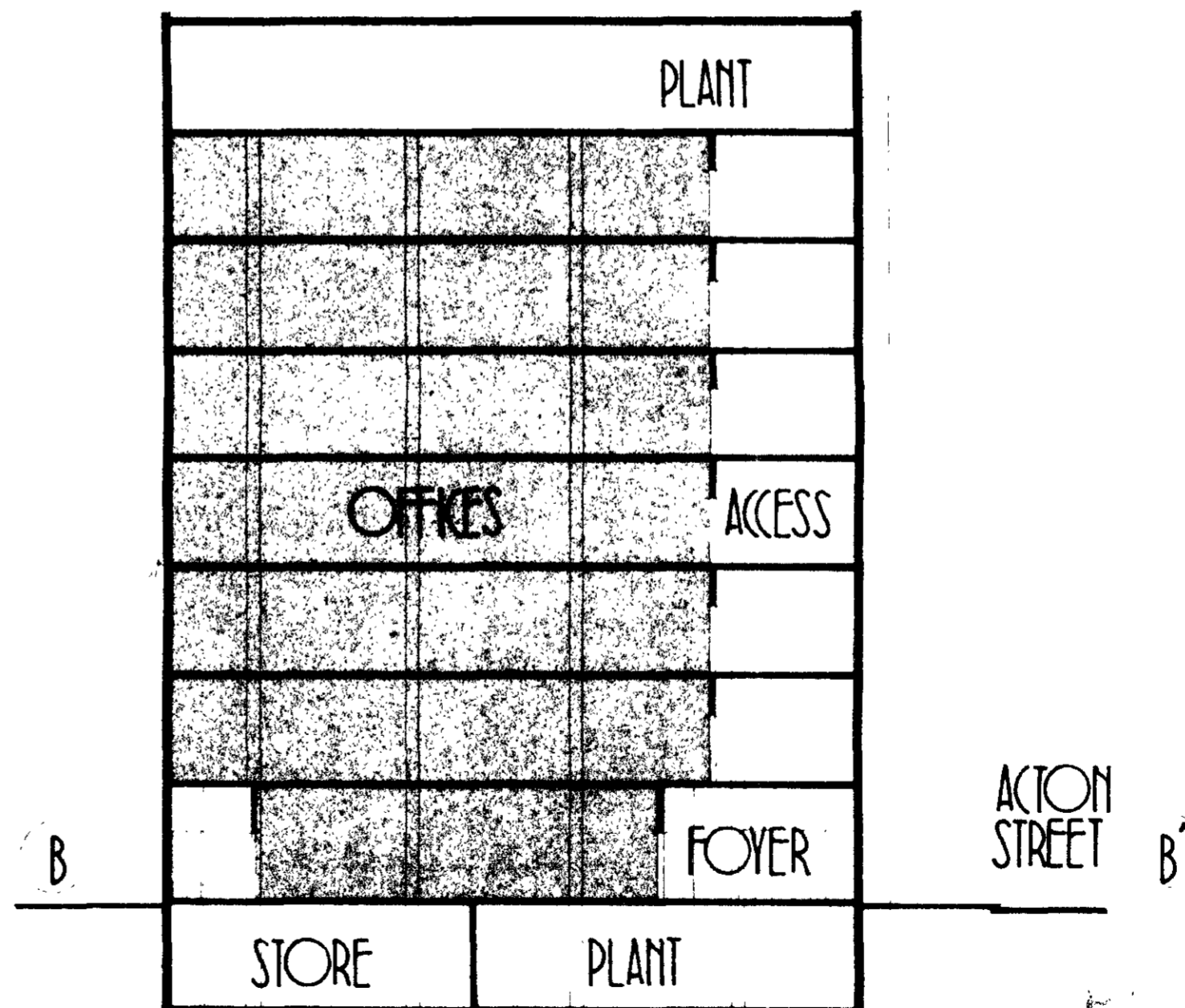
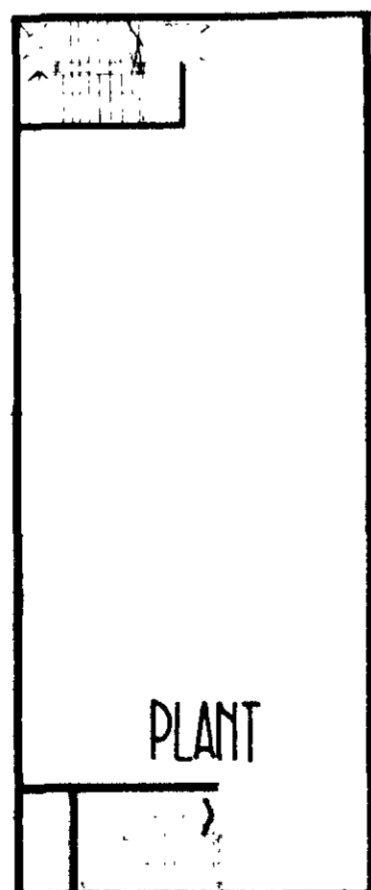
GRAYS INN RD

202_A

3RD. 4TH. 5TH. 6TH

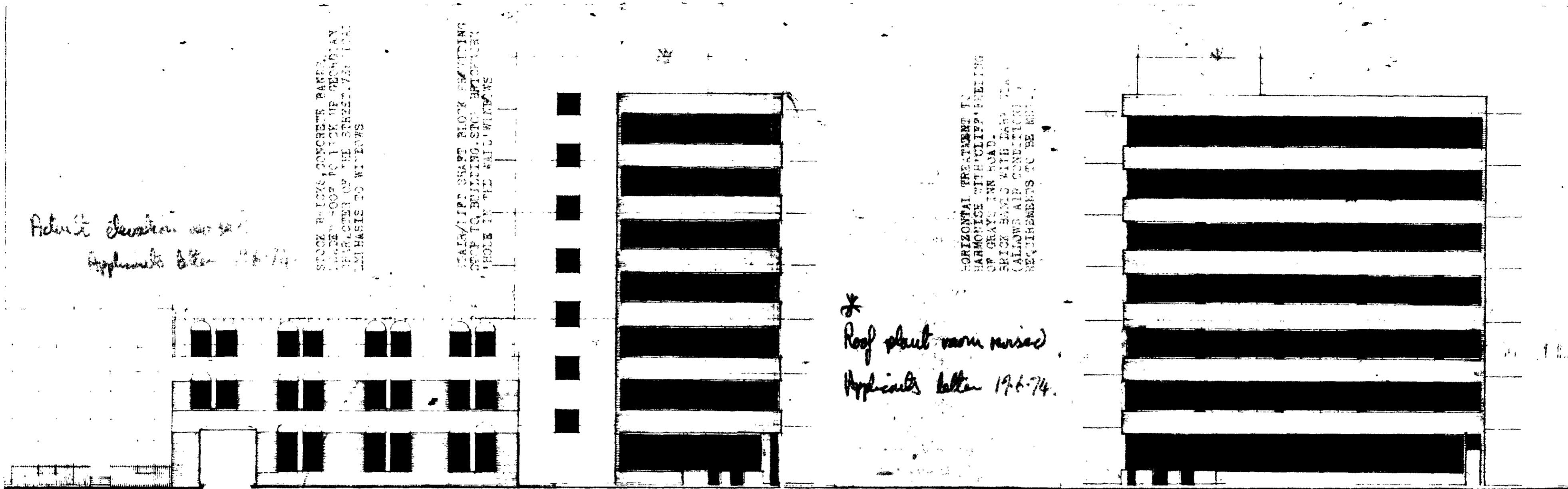


ROOF



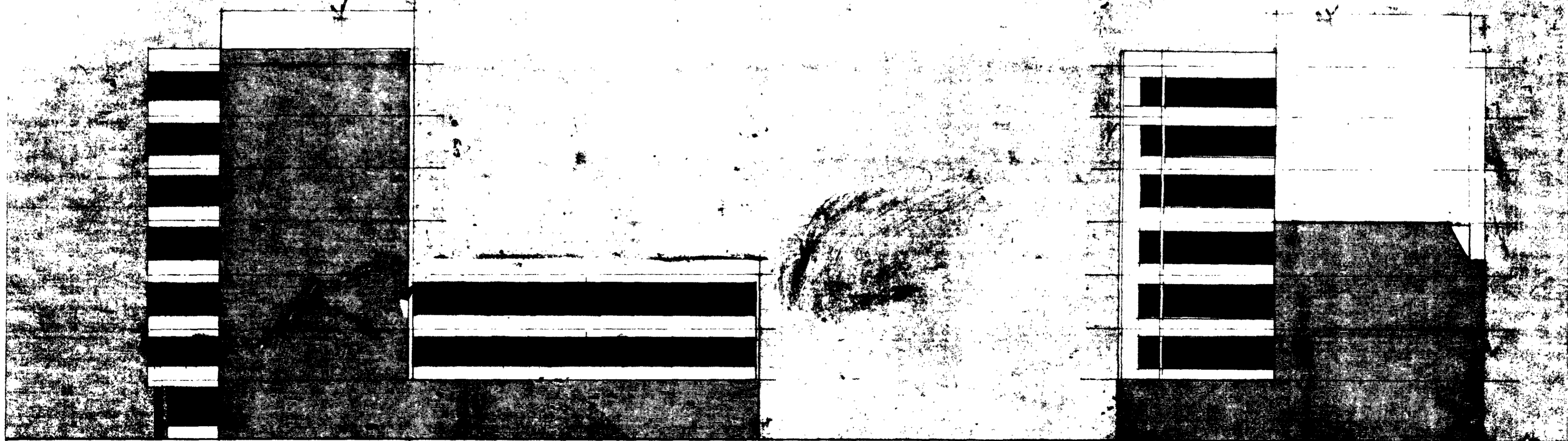
SIDNEY KAYE, FIRMIN AND PARTNERS' THAVIES INN HOUSE, 5 HOLBORN CIRCUS, LONDON, EC1N 2HN

PLANS + SECTIONS $\frac{1}{16} = 1'-0"$



NORTH ELEVATION (FROM ACTON STREET)

WEST ELEVATION (FROM GRAYS INN ROAD)



SOUTH ELEVATION

EAST ELEVATION

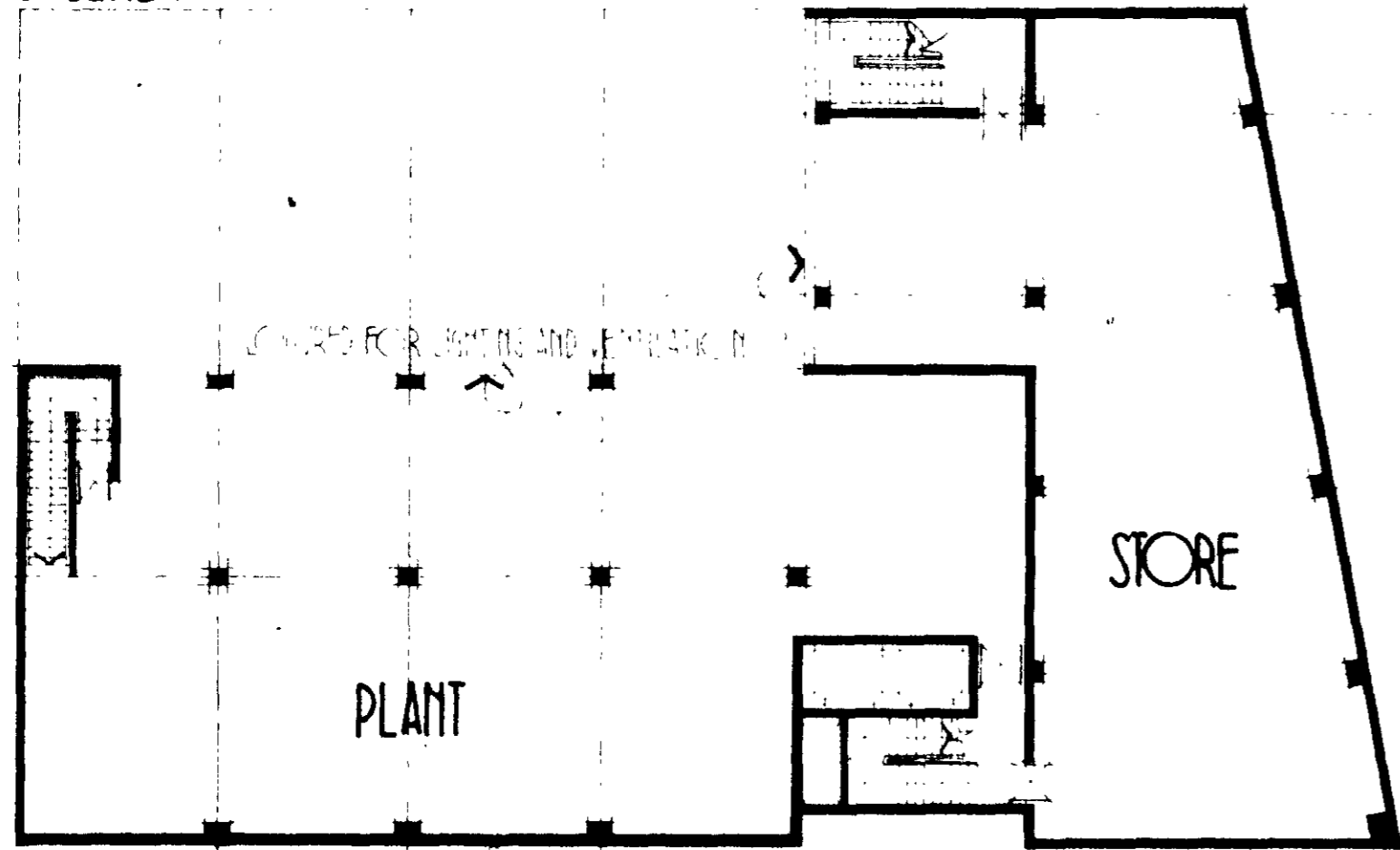
SIDNEY KAYE FIRMIN AND PARTNERS THAVIES INN HOUSE 5 HOLBORN CIRCUS LONDON EC1N 2HN

1/25/22/A / 185 (R) ELEVATIONS 1/16" = 1'-0"

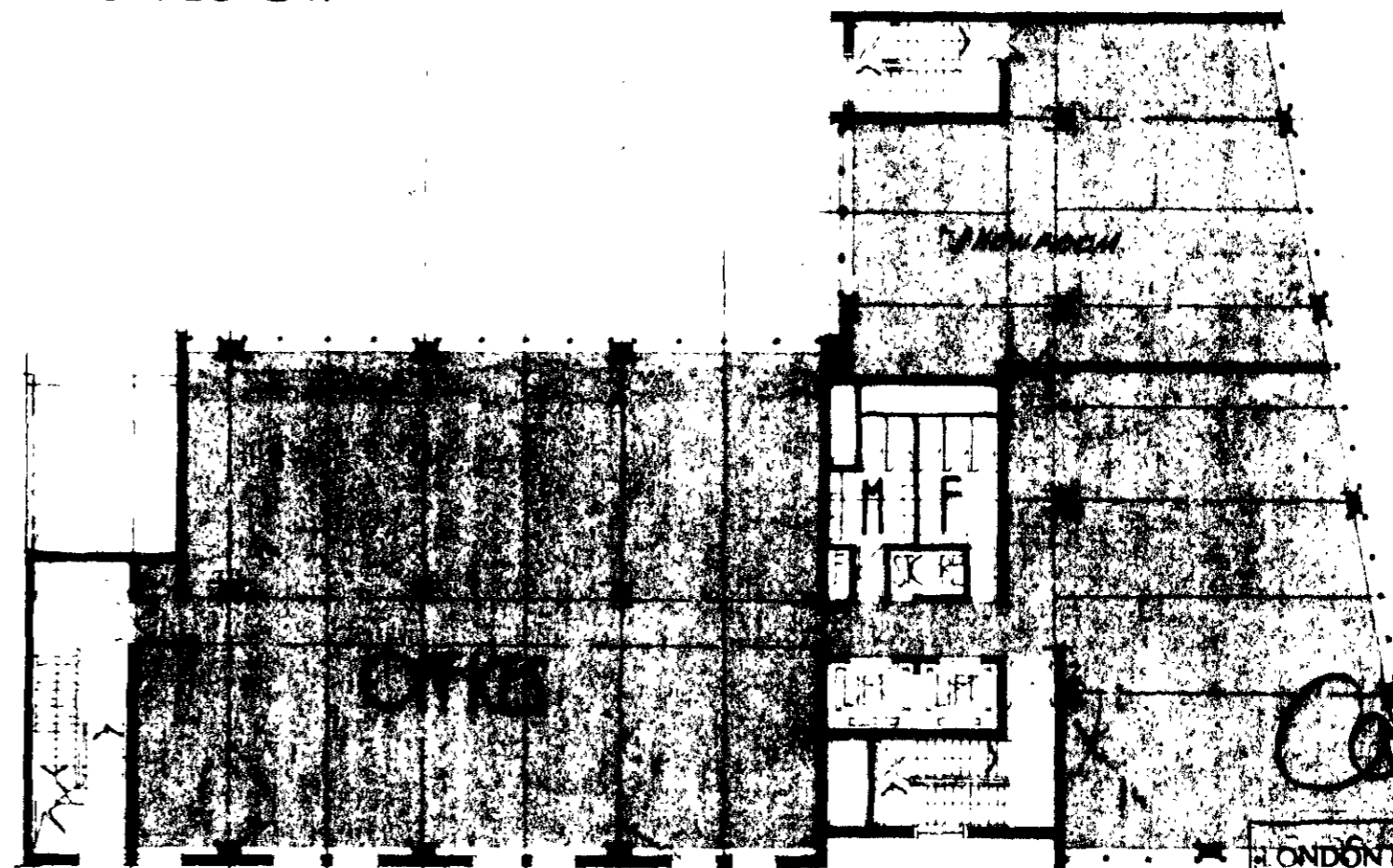
300-306 GRAYS INN RD

10 A.

BASEMENT



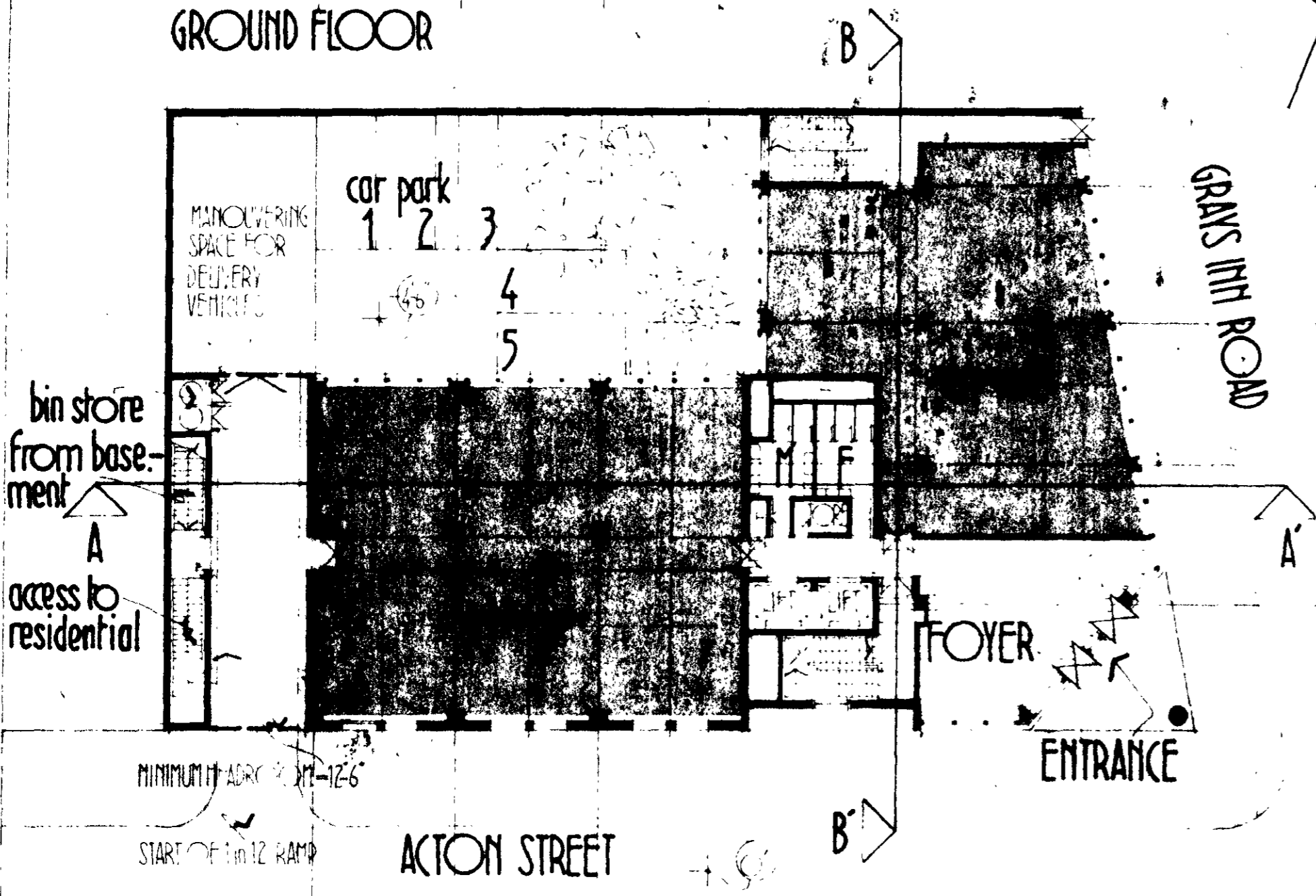
FIRST FLOOR



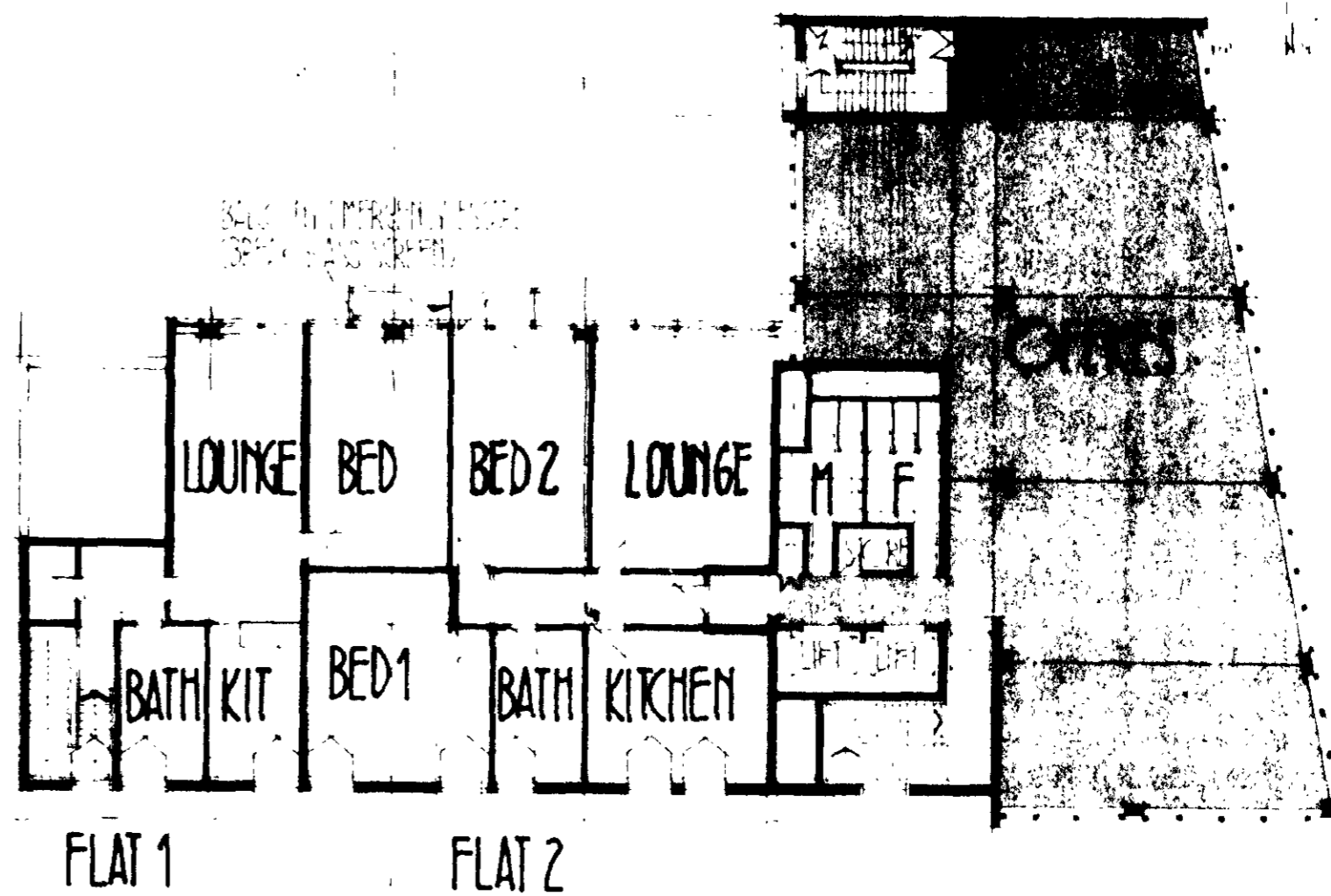
Cape Gray

LONDON BOROUGH OF CAMDEN
APPROVED
3 JUL 1974
ON BEHALF OF THE COUNCIL

GROUND FLOOR



2ND FLOOR



SIDNEY KAYE, FIRMIN AND PARTNERS, THAVIES INN HOUSE, 5 HOLBORN CIRCUS, LONDON, EC1M 2HN

1/15/22 A / 1851R(R)

PLANS 1/16" = 1'-0"