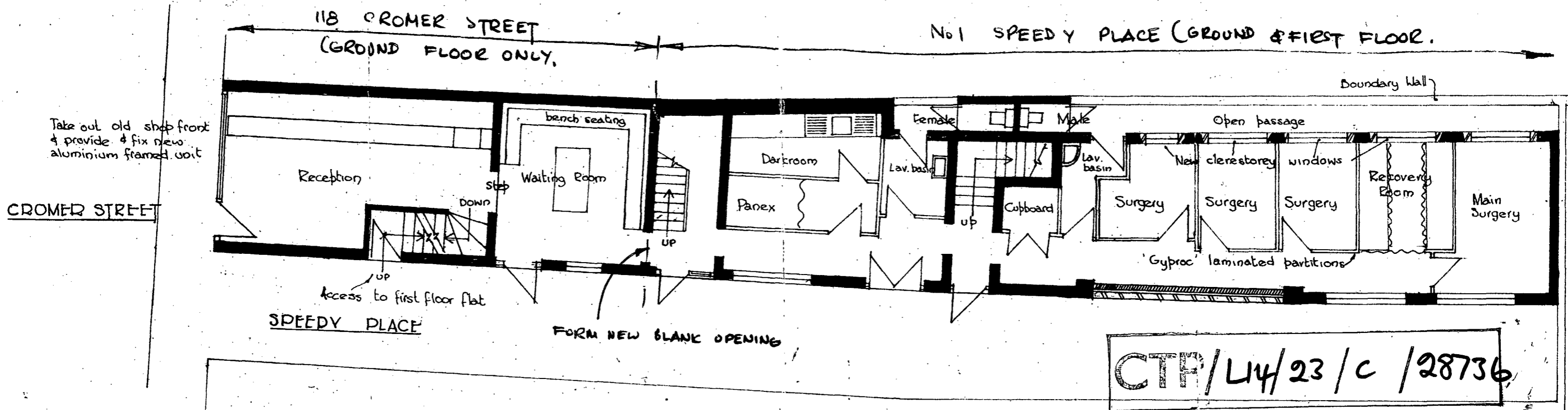


FIRST FLOOR PLAN (AS EXISTING)



GROUND FLOOR PLAN

**PRELIMINARY SURVEY AND PROPOSALS FOR A SPEEDY PLACE, CAMDEN FOR P. FROST ESQ.**

Scale 1:100  
May 1979

LONDON BOROUGH OF CAMDEN  
TOWN AND COUNTRY PLANNING ACTS  
- 2 OCT 1979  
APPROVED  
PLANS NOT APPROVED  
ON BEHALF OF THE COUNCIL

P. J. Thompson A.R.I.C.S.,  
19 The Close  
Kenilworth.  
(Tel 59020)