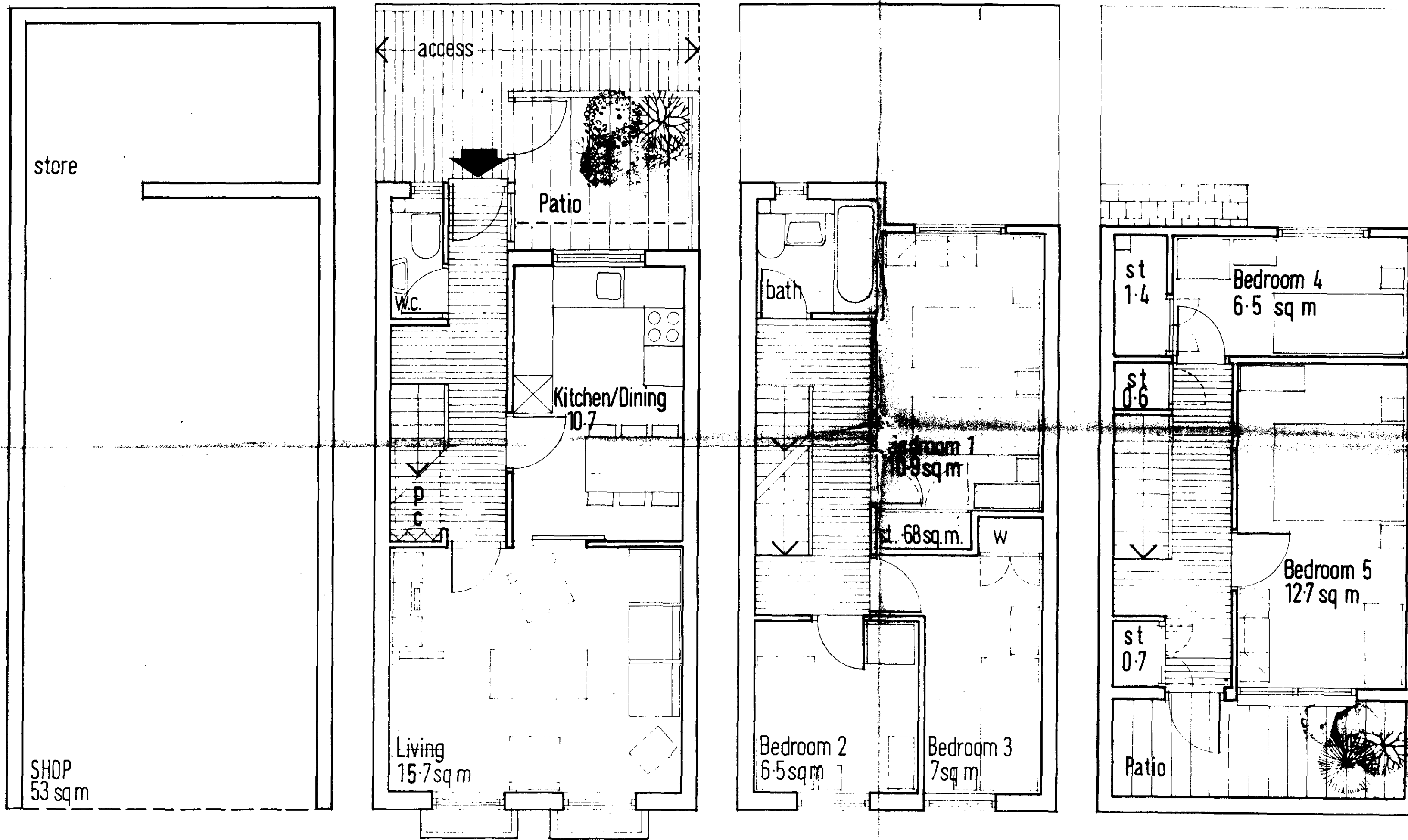


PMA 111.5 sq.m.  
 AREA 111.5 sq.m.

This drawing is not to be scaled  
 Verify all dimensions on the site

Notes



GROUND

FIRST

SECOND

THIRD

DRUMMOND STREET

**BLOCK G** 7 person



Revisions

LONDON BOROUGH OF CAMDEN  
 PLANS APPROVED  
 20 MAY 1975  
 ON BEHALF OF THE COUNCIL  
 CASE W/1

a REVISED 26-3-75

TOLMERS SQUARE  
 REDEVELOPMENT

BLOCK G / 7P

Drawn by Scale 1:50 TS/3/51a

Checked by Date MAR. '75

Renton Howard Wood Levin  
 Partnership

48 Queen Anne Street London W1M 0BQ  
 01-935 9921

42/22 S 20614



BLOCK G Drummond St.



BLOCK M Drummond St.

L12'22 / D 20614

a REVISED 26/3/75

TOLMERS SQUARE  
REDEVELOPMENT

BLOCK G & M  
DRUMMOND STREET ELEVATIONS

Drawn by	Scale	TS/3/60a
Checked by	1:100	
	Date	MAR. '75

Renton Howard Wood Levin  
Partnership

48 Queen Anne Street London W1M 0EQ  
01-935 9921