

FLOOR AREAS OF SHOP UNITS

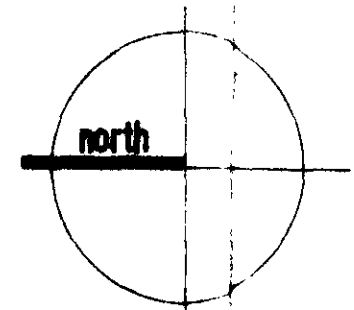
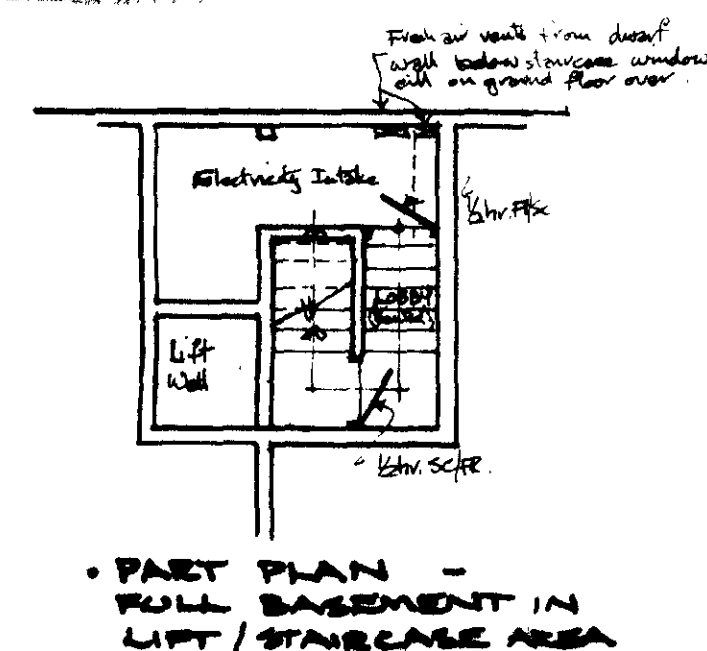
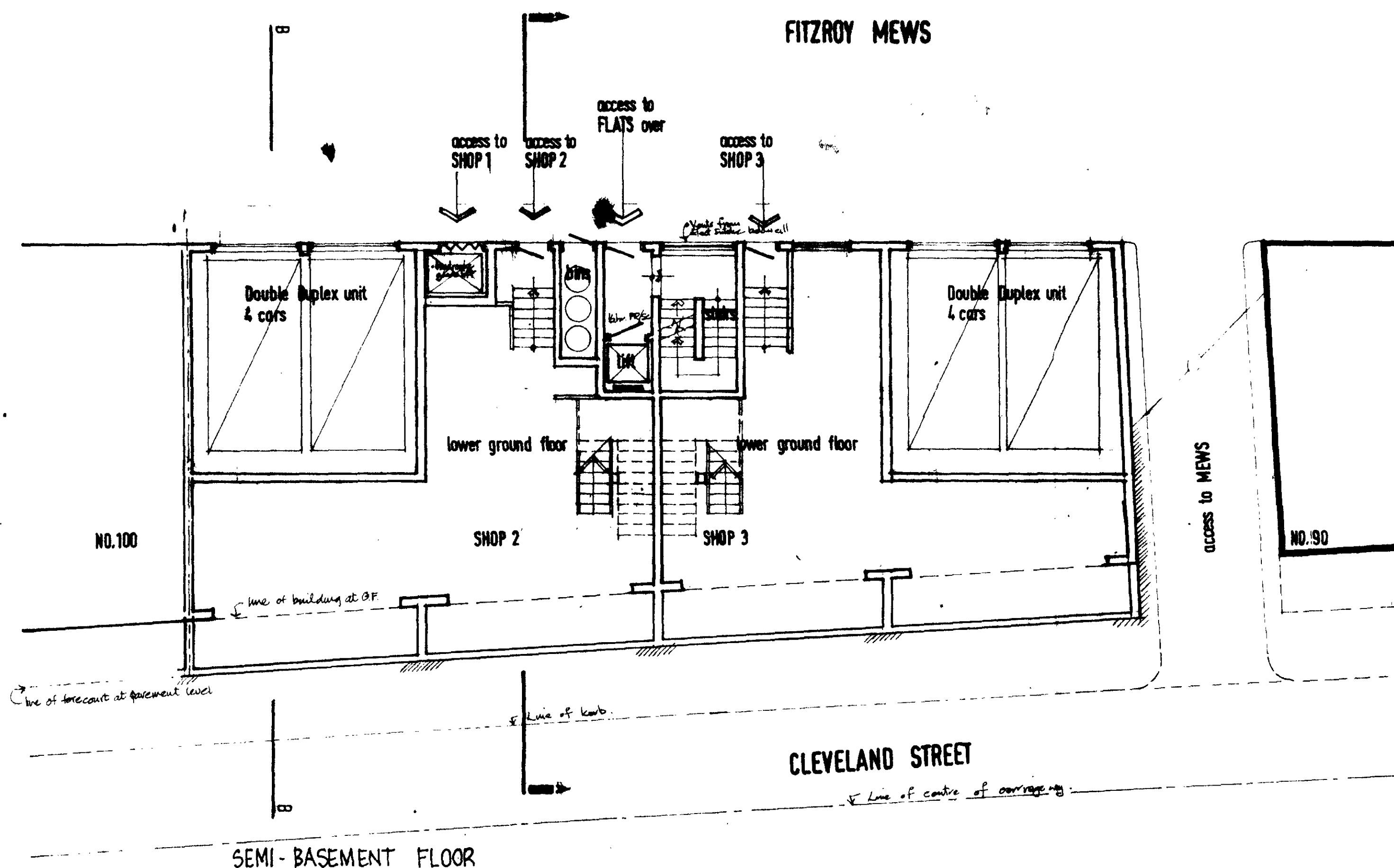
SHOP 1

SHOP 2

SHOP 3

SHOP 4

TOTAL AREA 2750 sq ft.

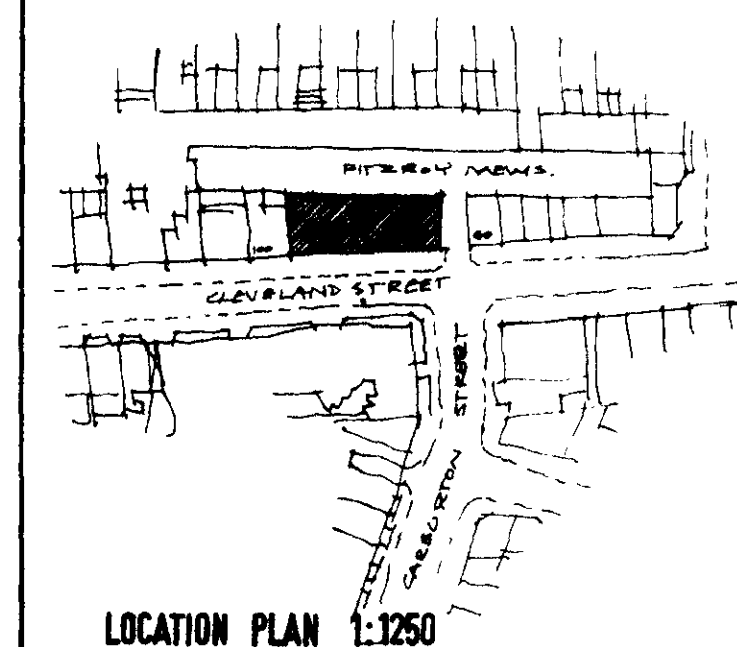


Notes

The Contractor is responsible for checking dimensions. Any discrepancy to be verified with the Architect before proceeding with works.

Where an item is covered by drawings of different scales, the drawing having the largest scale is to be worked to.

Do not scale drawings. Figured dimensions to be worked to in all cases.



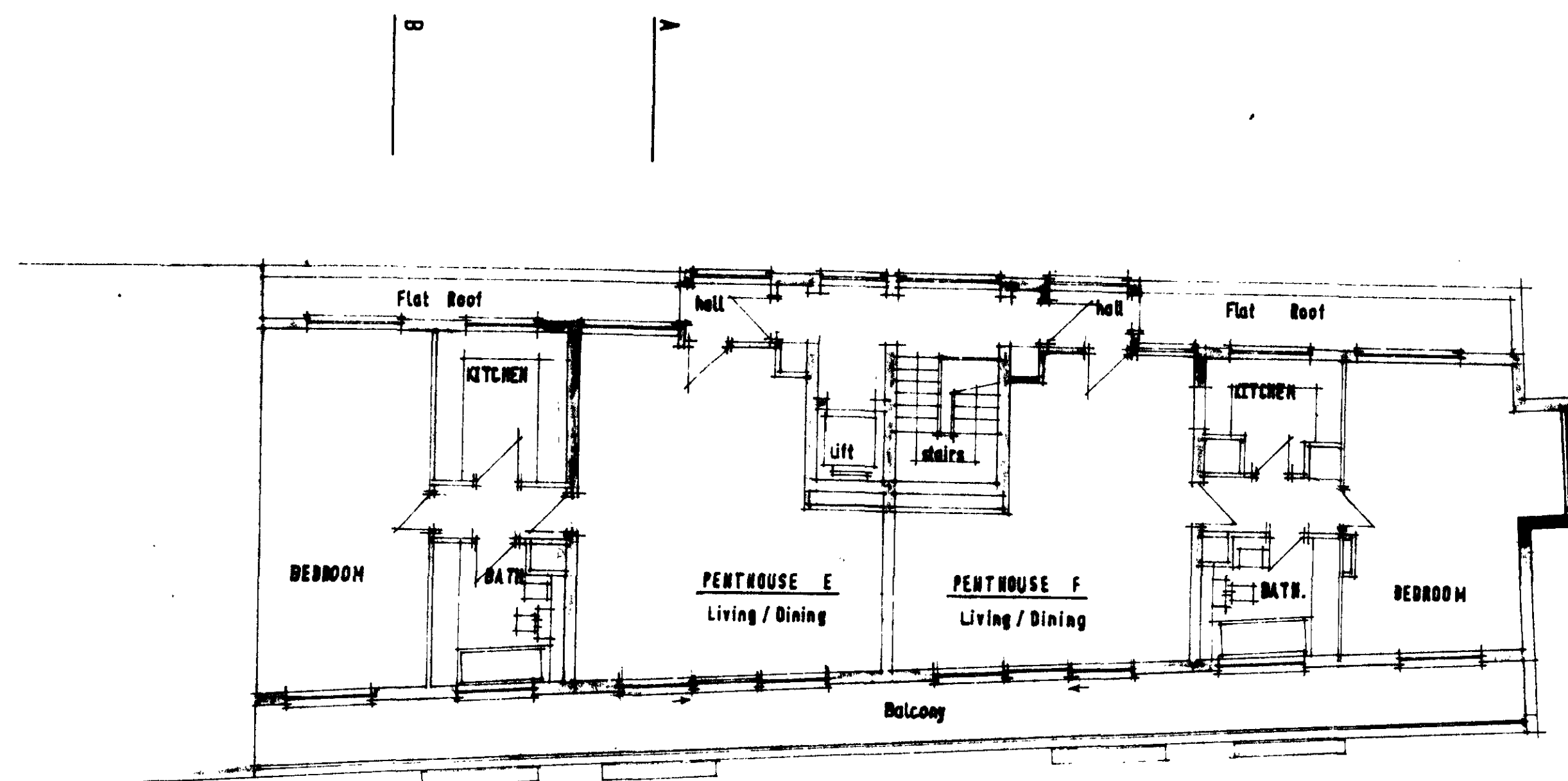
Amendments

- A 22.9.69 lift to Shop 1 added and stairs removed. Access amended. Access to Shop 4 and stairs to Shop 4 amended. Stair area added to Shop 3.
- B 29.9.69 being basement floor amended to include void to lift/hall and stairs re-arranged.
- C 25.10.69 Shop 1 front varied. Notes re F.R. doors added.
- D 9.9.69 Part plan of Full Basement added. Electrical Intake Revised.
- E 14.10.69 Brays dotted over g.f. plan omitted.

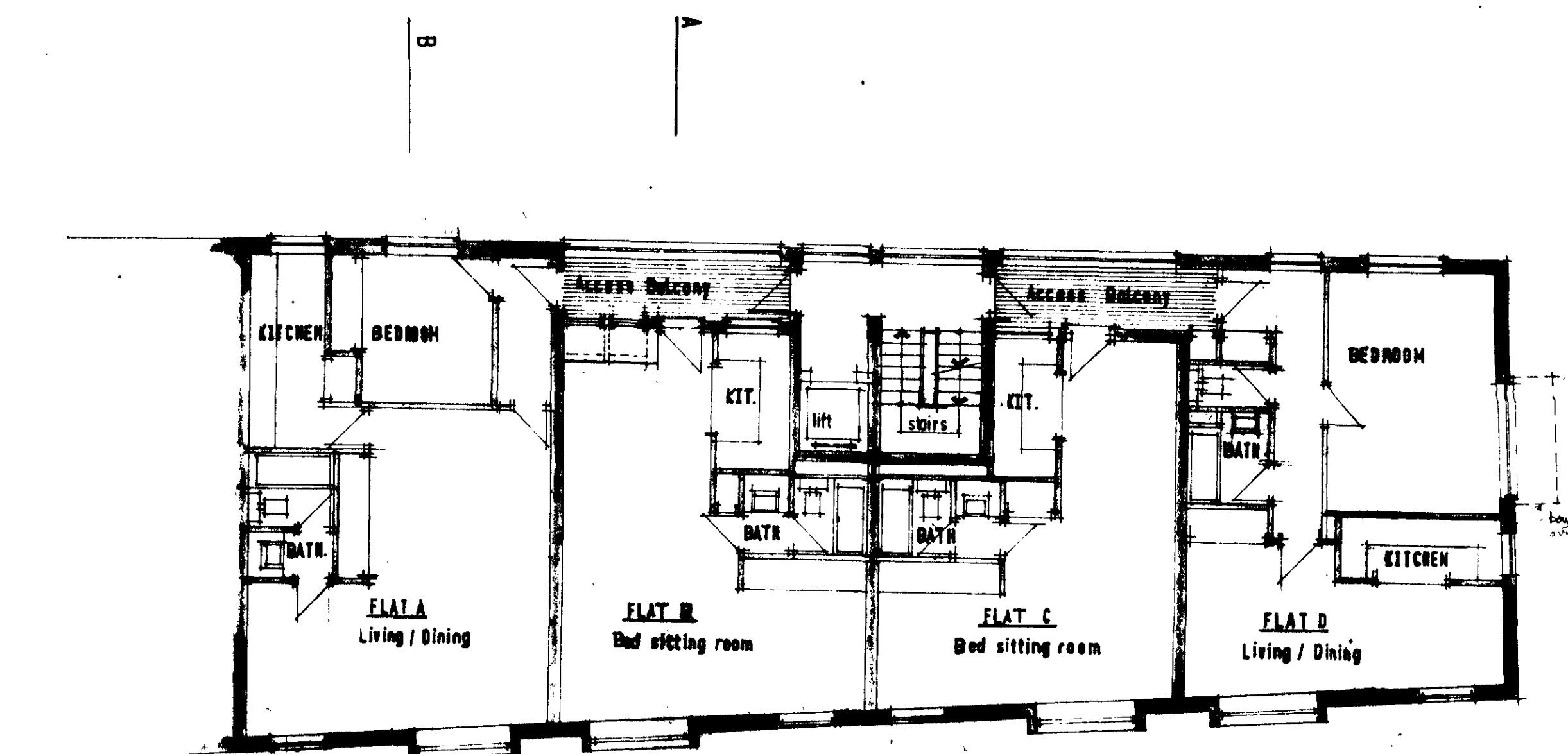
LONDON BOROUGH OF CAMDEN
APPROVED
PLANS
17 DEC 1969
ON BEHALF OF THE COUNCIL

M12 27 B* 7465(R)

Job No. 92-98 CLEVELAND ST. LONDON W.1.	Job No. 1151
Drawing No. SCHEME B GROUND FLOOR PLANS	Drawing No. 4
Scale: 1/8" to 1/4"	Date: JULY 1969.
RONALD S. MON & PARTNERS Chartered Architects A/ARIBA 13 Campden Street, Kensington, London, W.8. Bayswater 9176	



4th FLOOR PLAN



1st 2nd AND 3rd FLOOR PLAN

**SCHEDULE OF DOMESTIC
ACCOMMODATION**

FLOORS	1, 2 & 3
Flat A	2 habitable rooms
" B	1
" C	1
" D	2
FLOOR 4	
Flat E	2
F	2
Total habitable rooms = 22	

Notes

The Contractor is responsible for checking dimensions.
Any discrepancy to be verified with the Architect before
proceeding with works.

Where an item is covered by drawings of different scales,
the drawing having the largest scale is to be worked to.

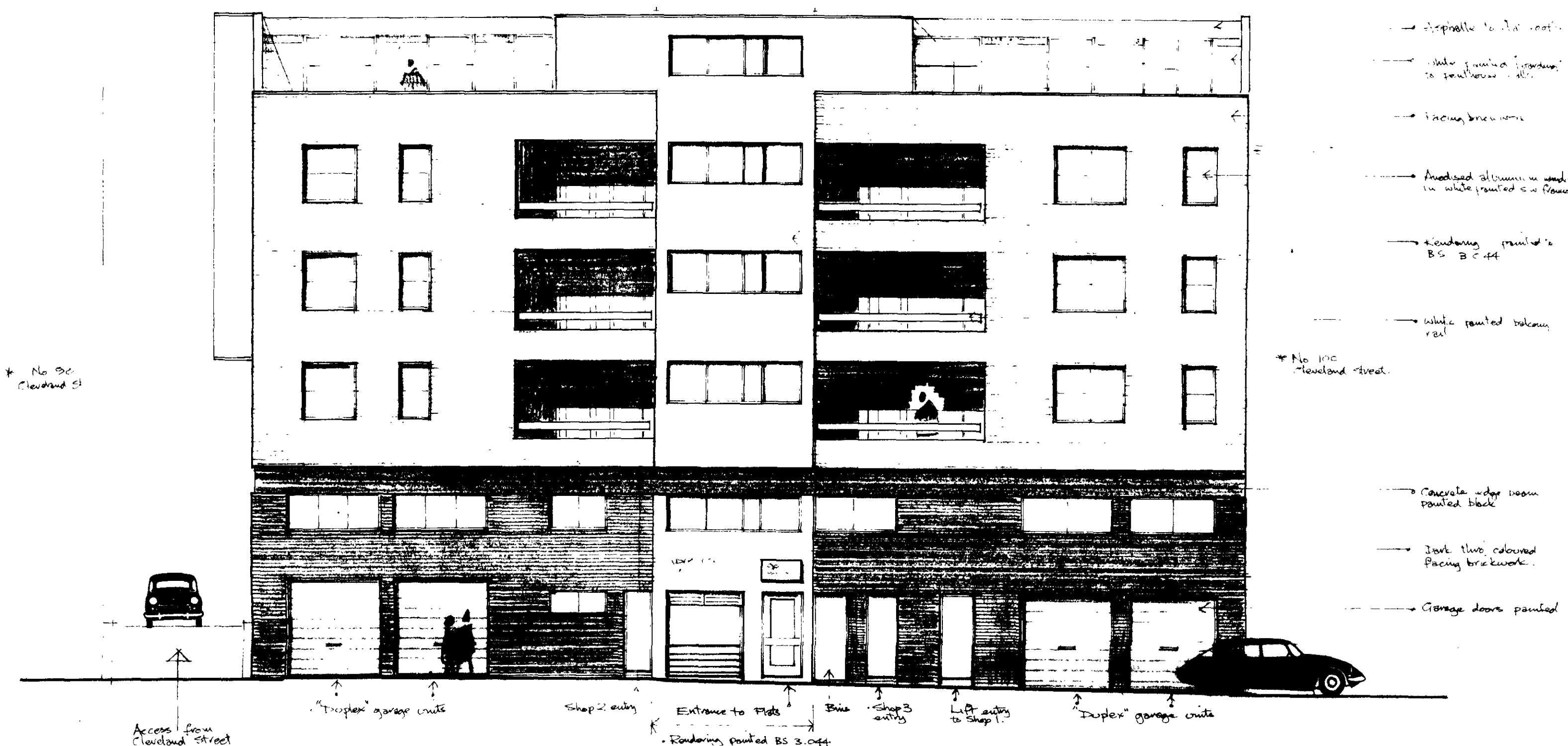
Do not scale drawings. Figured dimensions to be worked to in
all cases.

Amendments

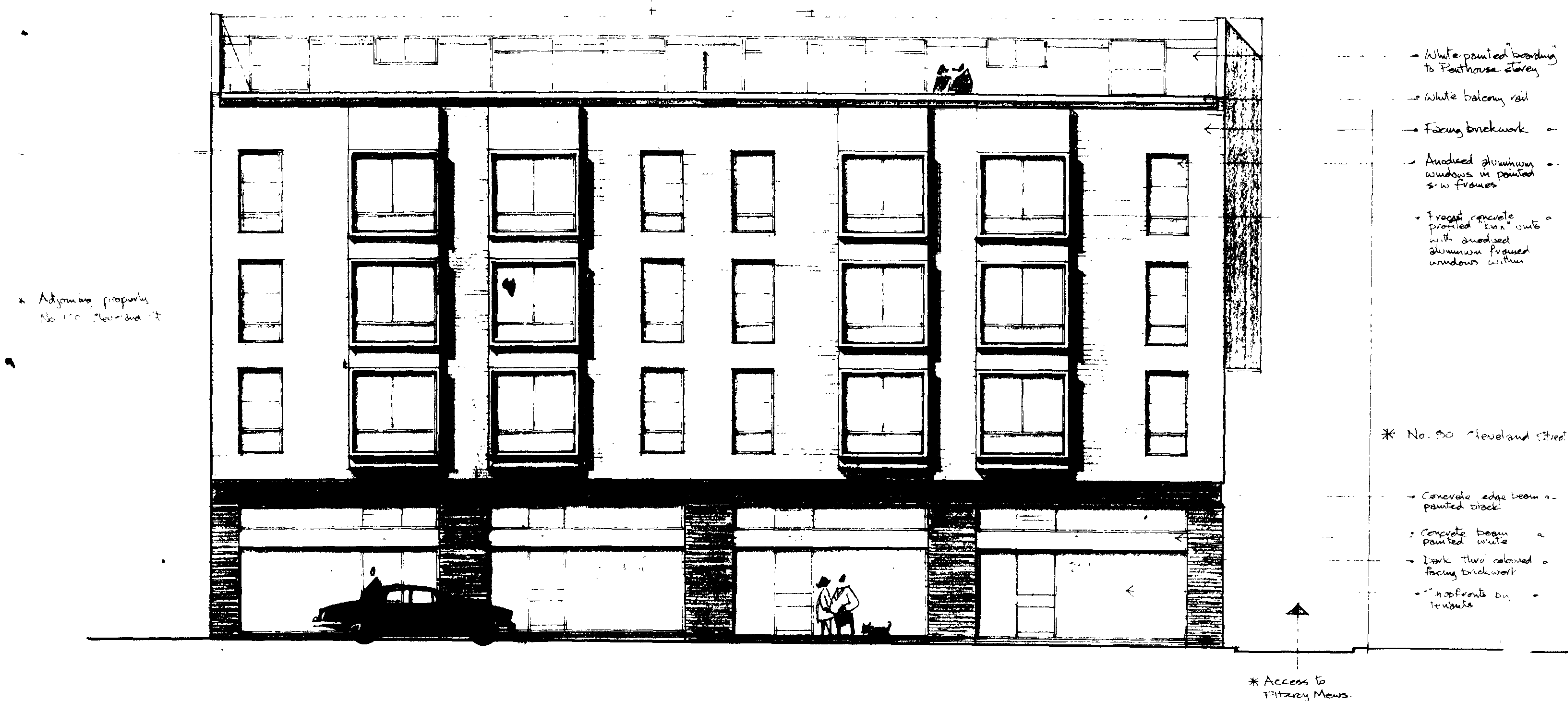
M12 27 B 7465(R)

F Nov 1961 "Bones" shown correct in west end
E Nov 7 1961 "Bones" shown correct in west end
D Oct 1961 REDRAFTED

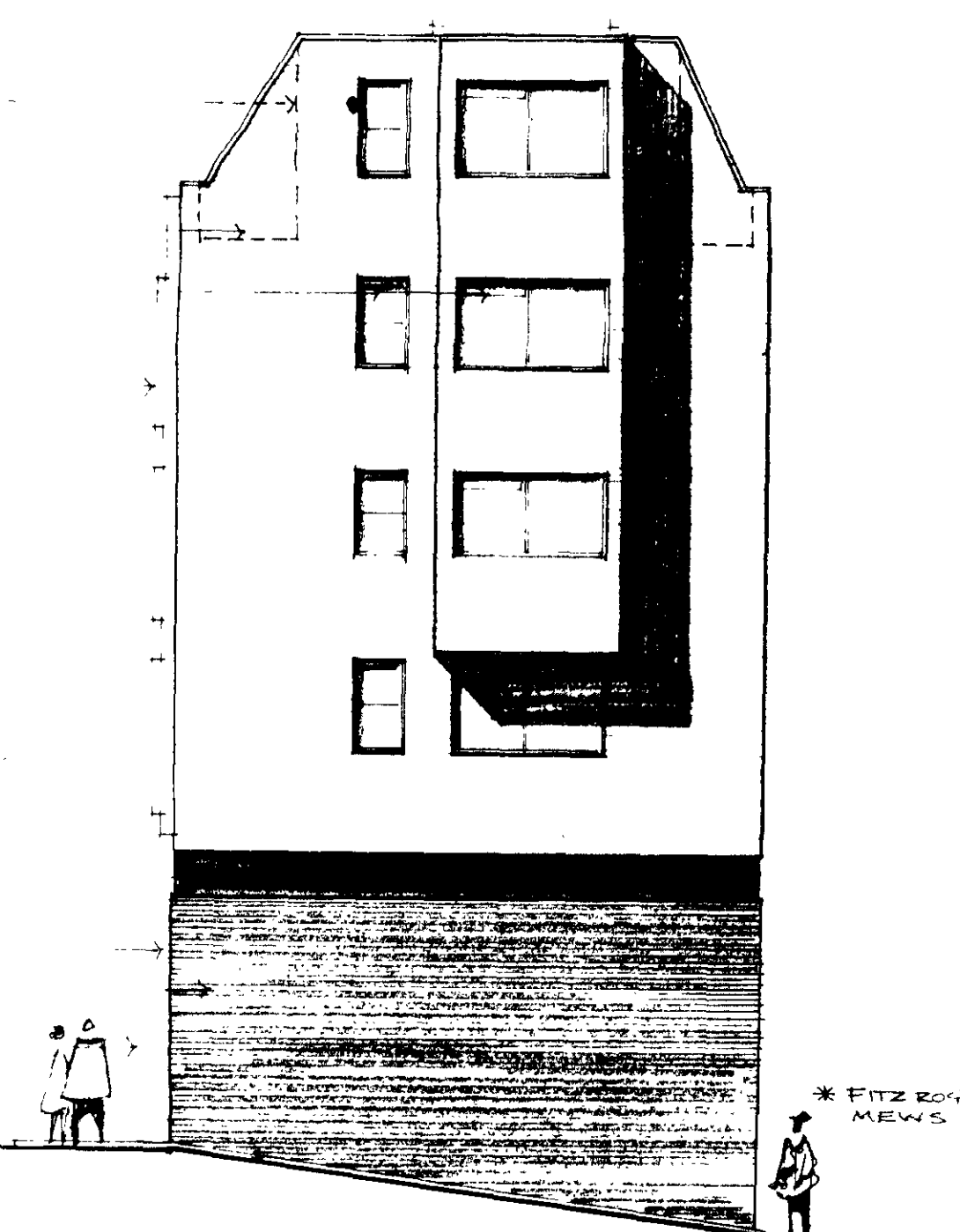
Job	92-98 CLEVELAND ST. LONDON W.1.	Job No.	1151
Drawing	1st to 4th FLOOR PLANS	Drawing No.	5E
Scale:	$\frac{1}{8}"$ to $1' 0"$	Date:	
RONALD SALMON & PARTNERS Chartered Architects A/ARIBA 13 Campden Street, Kensington, London, W.8. Bayswater 9176 7			



EAST ELEVATION - TO FITZROY MEWS



WEST ELEVATION - TO CLEVELAND STREET



SOUTH ELEVATION

Notes

The Contractor is responsible for checking dimensions. Any discrepancy to be verified with the Architect before proceeding with works.

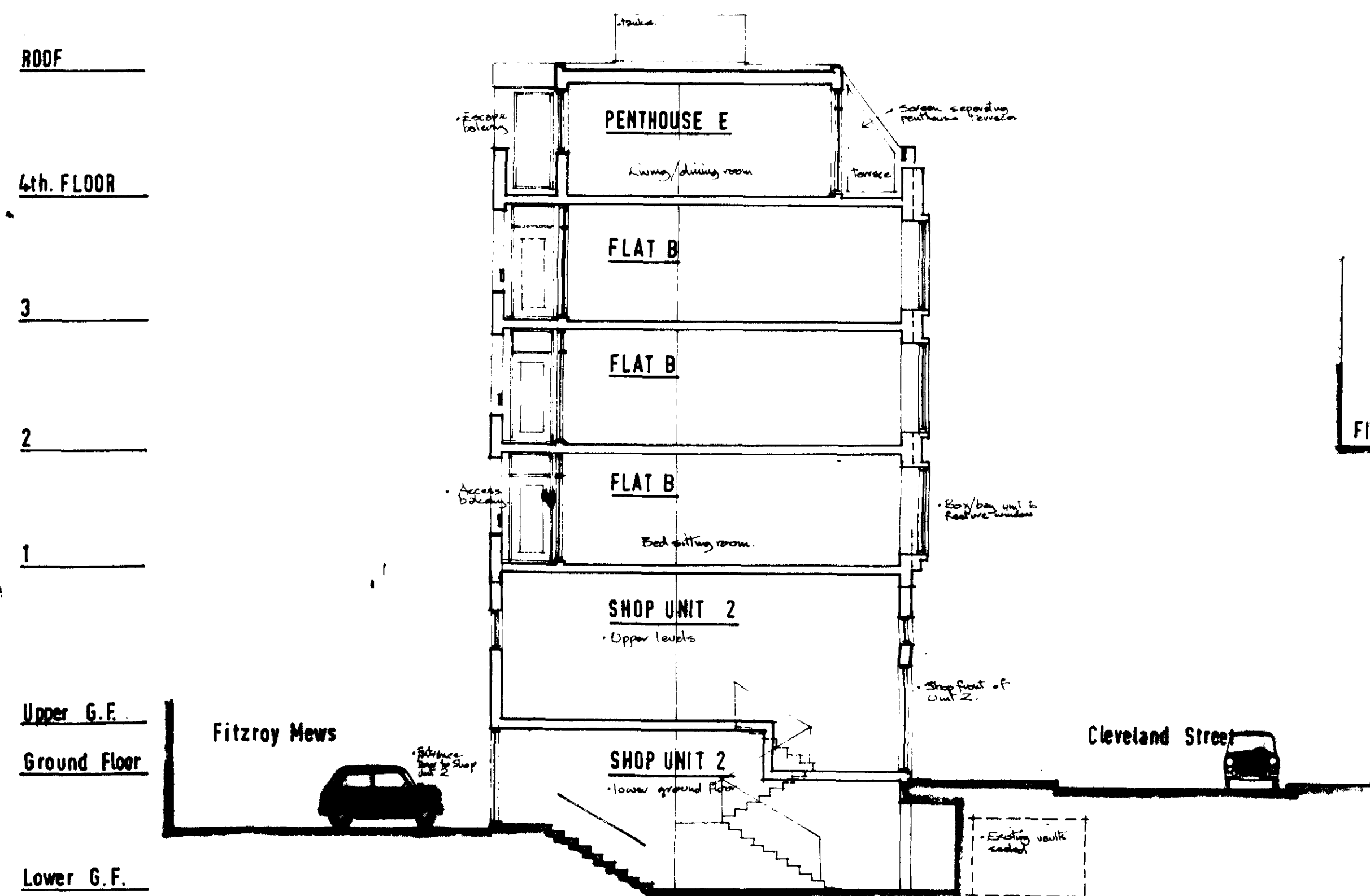
Where an item is covered by drawings of different scales, the drawing having the largest scale is to be worked to.

Do not scale drawings. Figured dimensions to be worked to in all cases.

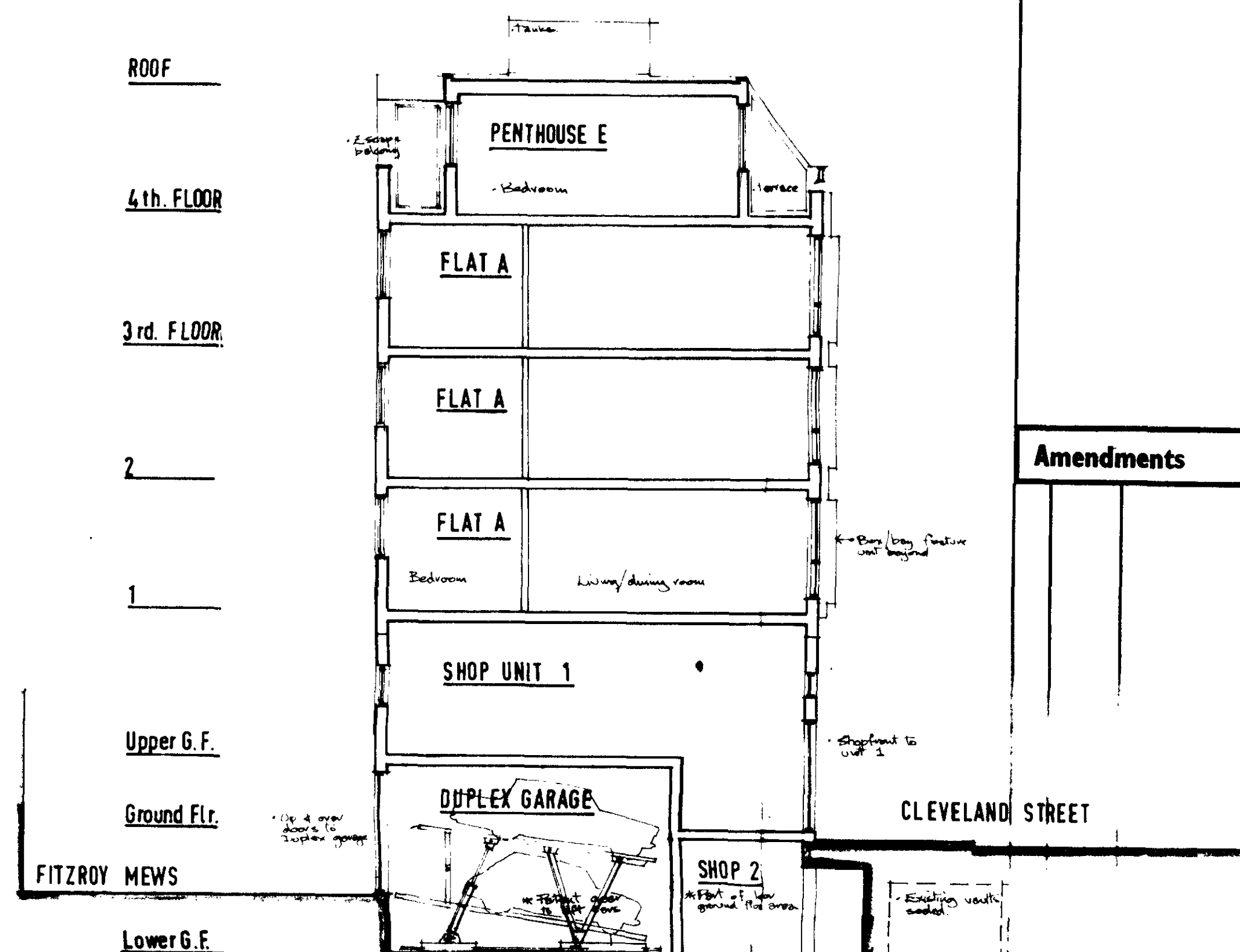
Amendments

10/12/27/8/7465(R)

Job No. 92-98 CLEVELAND STREET LONDON W. 1	Job No. 1151
Drawing No. 7	Drawing No. 7
Scale: 1/4" = 1'-0"	Date: 21.11.60
RONALD SALMON & PARTNERS Chartered Architects A/ARIBA 13 Campden Street, Kensington, London, W.8. 01-229 9176/7	



SECTION A - A



SECTION B - B

Notes

The Contractor is responsible for checking dimensions. Any discrepancy to be verified with the Architect before proceeding with works.

Where an item is covered by drawings of different scales, the drawing having the largest scale is to be worked to.

Do not scale drawings. Figured dimensions to be worked to in all cases.

Amendments

M12 27 B 7465(R)

D 21/11/69 Drawing redrafted & levels corrected section B-B added

Job 92-98 CLEVELAND STREET LONDON W.1 Job No. 1151

Drawing SECTIONS Drawing No. 8

Scale: 1/8" to 1'0" Date: 21.11.69

RONALD SALMON, & PARTNERS
Chartered Architects A/ARIBA
13 Campden Street, Kensington, London, W.8. 229 9176/9178