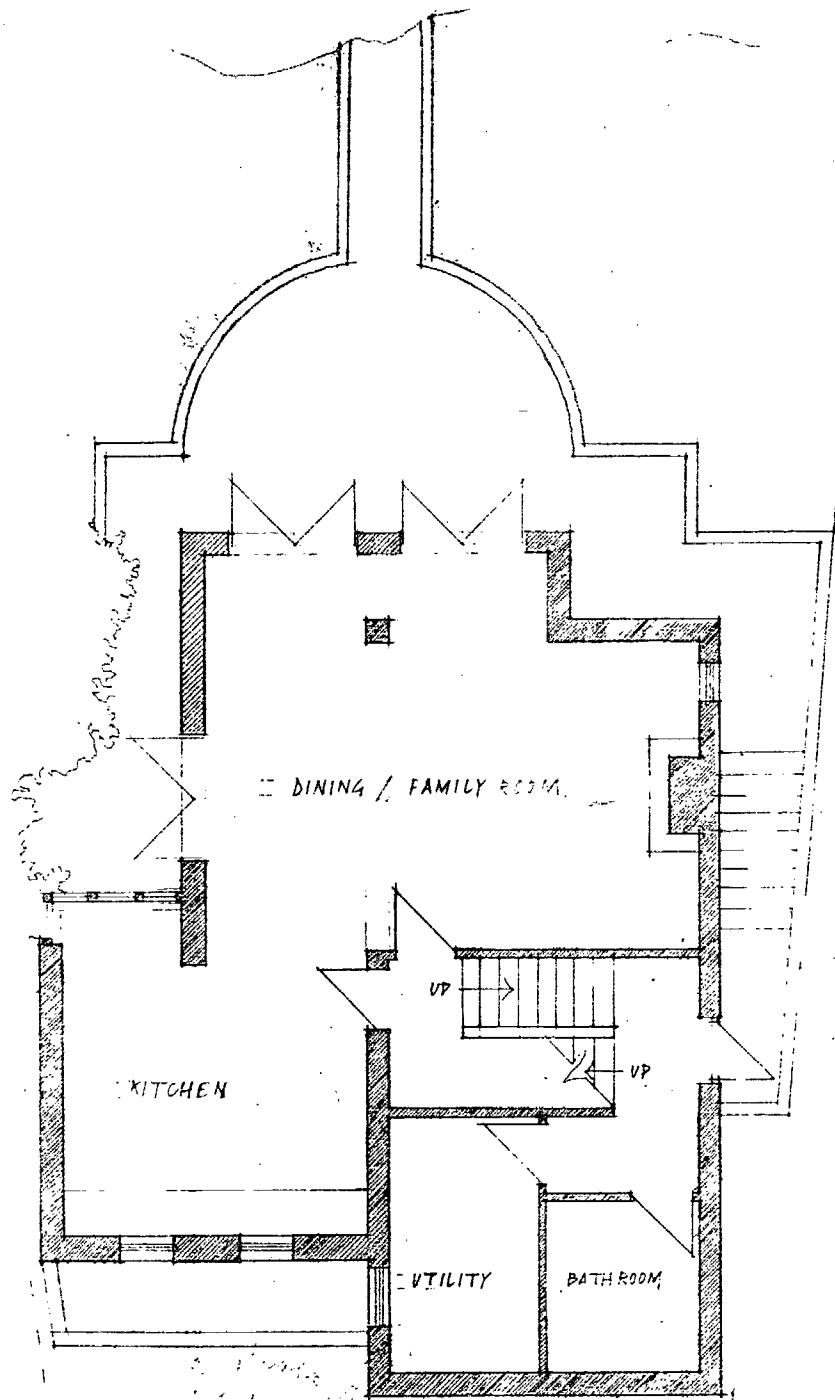
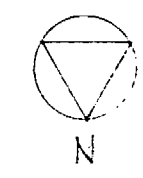
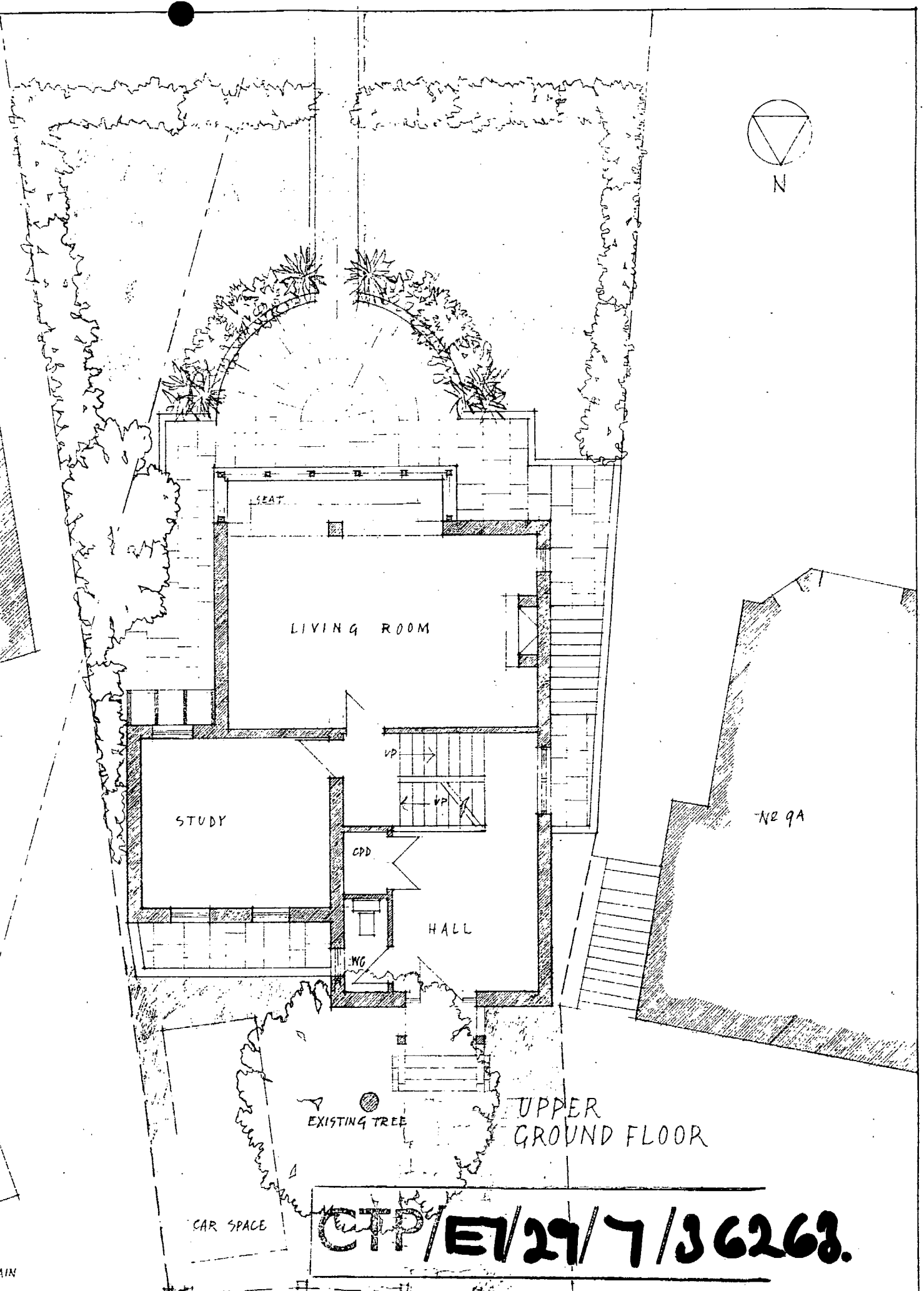


PROPOSED HOUSE ADJACENT TO NO 9A GAINSBOROUGH Gdns NW3
PLANS OF LOWER FLOORS ~ SCALE 1:100 ~ DRAWING NO 3/1

BRANDON-JONES AND THORNE, ARCHITECTS
2, REDINGTON ROAD, LONDON, NW3 7RG.

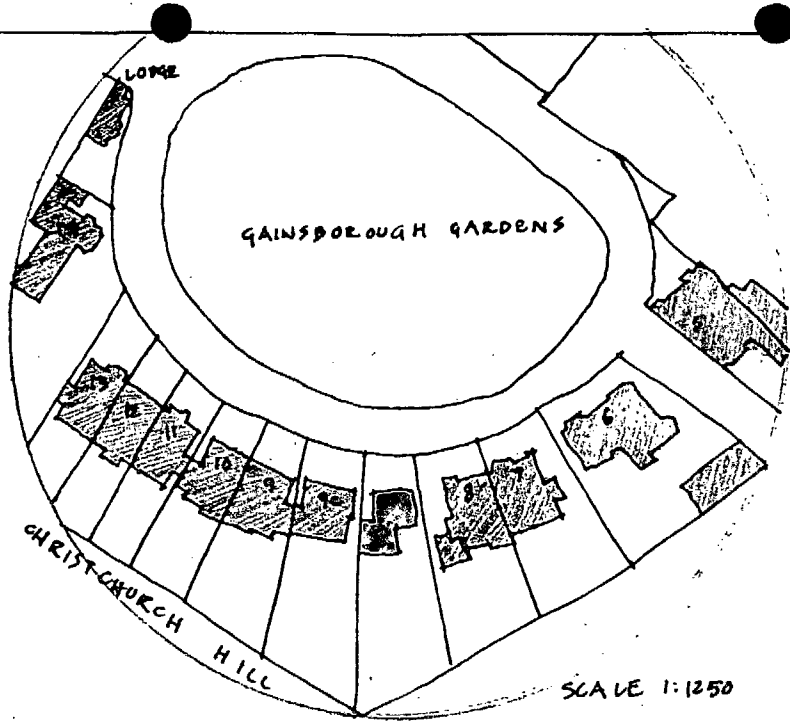


LOWER GROUND FLOOR

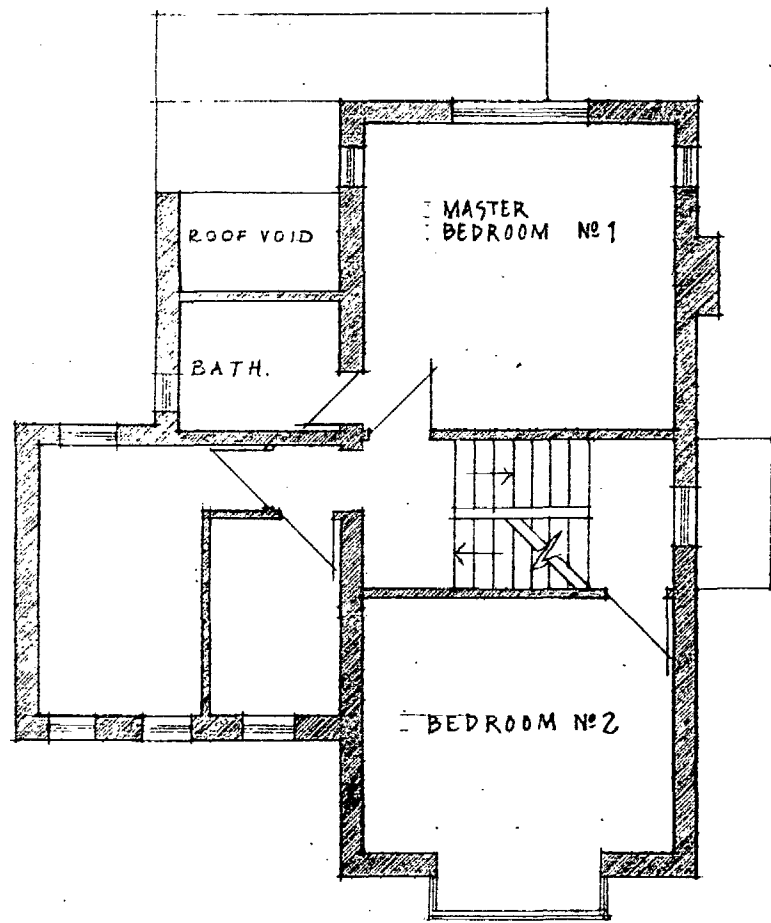


UPPER GROUND FLOOR

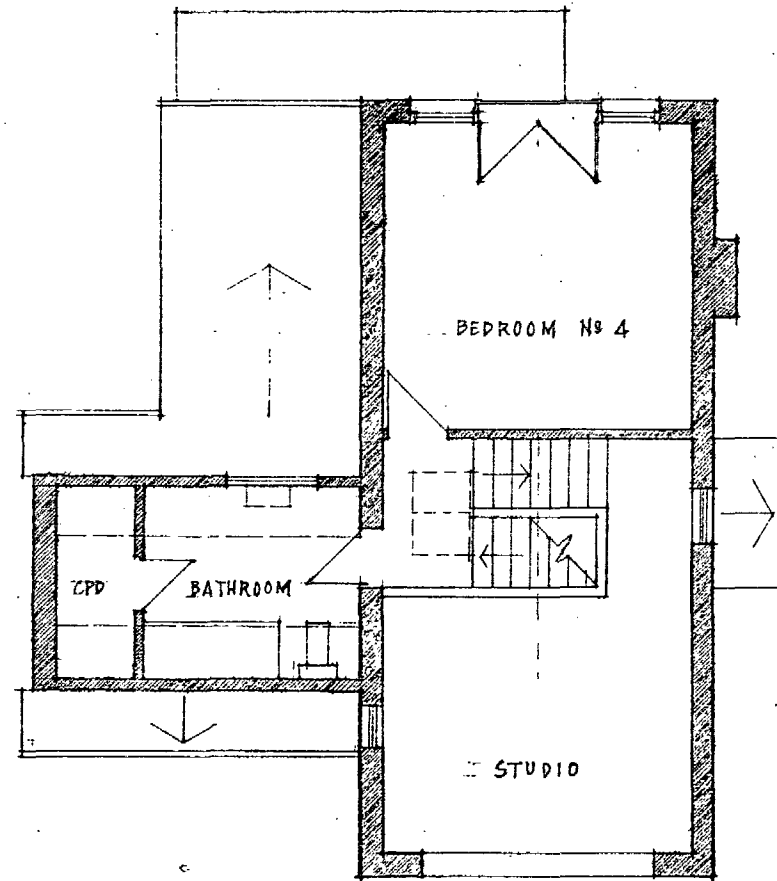
CTP/E/29/7/36268.



CTP/E1/29/7/36263.

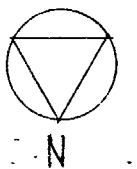


FIRST FLOOR PLAN



SECOND FLOOR PLAN

PROPOSED HOUSE ADJACENT TO NO 9A GAINSBOROUGH GARDENS LONDON NW 3
 BRANDON-JONES & THORNE, ARCHITECTS, 2 REDINGTON ROAD, NW 3 7R4.
 DWG No 3/2



PROPOSED HOUSE ADJACENT TO NO 9A GAINSBOROUGH GARDENS - LONDON NW3
BRANDON-JONES & THORNE, ARCHITECTS, 2 REDINGTON ROAD NW3 7RQ.

1.100
DWG NO 3/4



CTP/E1/29/7/36263.

ELEVATION FACING NORTH INTO GAINSBOROUGH GARDENS

PROPOSED HOUSE ADJACENT TO NO 9A GAINSBOROUGH GARDENS LONDON NW 3
BRANDON-JONES & THORNE, ARCHITECTS, 2 REDINGTON ROAD, NW 3 7RQ.

1.100
DWG NO 3/3



No 9A

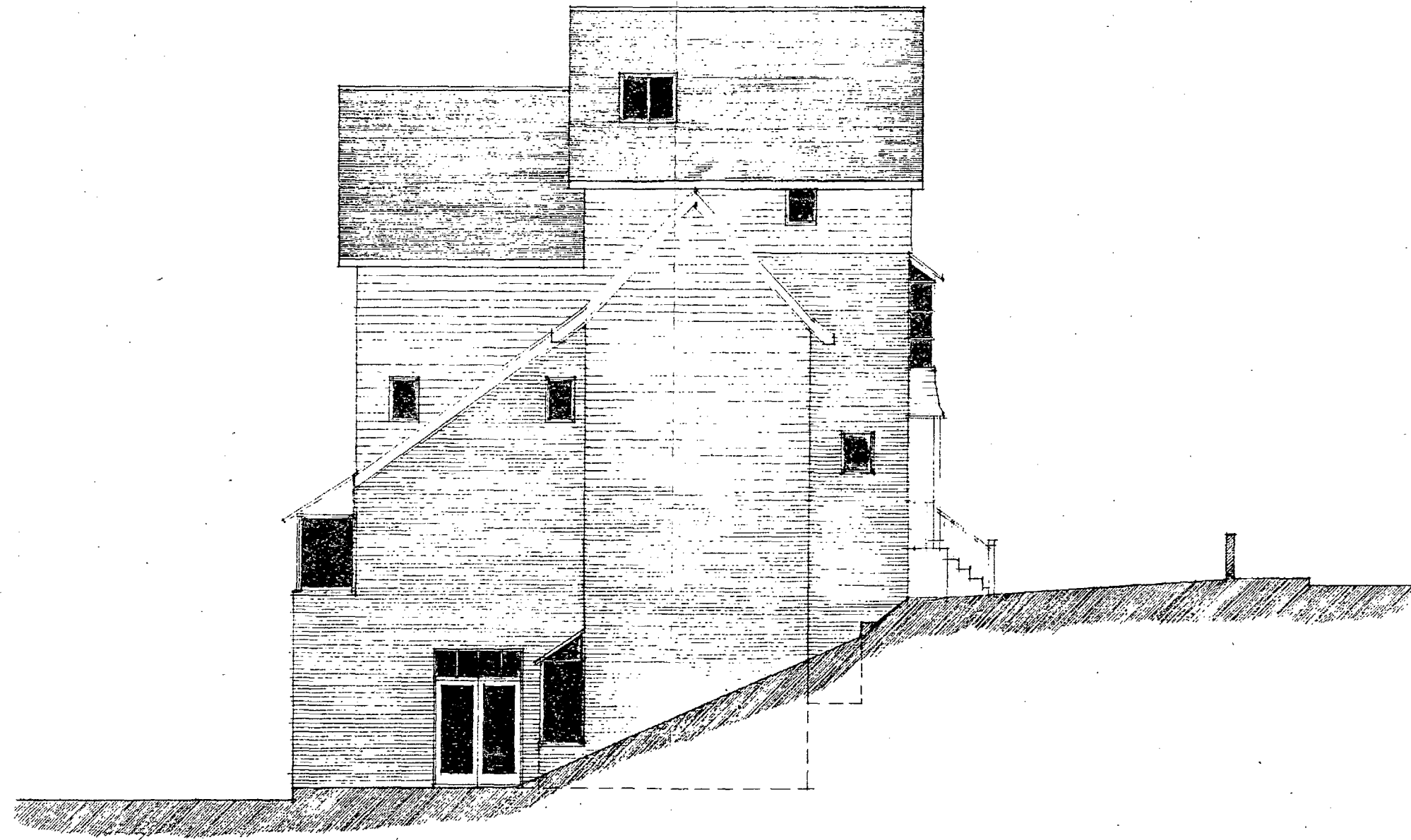
No 8

CTP/E1/29/7/36263.

ELEVATION FACING SOUTH TOWARDS CHRISTCHURCH HILL

PROPOSED HOUSE ADJACENT TO NO 9A GAINSBOROUGH GARDENS LONDON NW 3
BRANDON-JONES & THORNE, ARCHITECTS, 2 REDINGTON ROAD, NW3 7R9.

1:100
DWG NO 3/5



ELEVATION FACING EAST.

CTP/E1/29/7/36263.