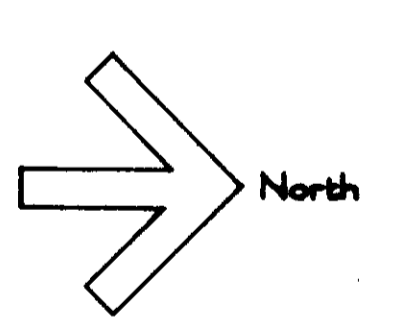
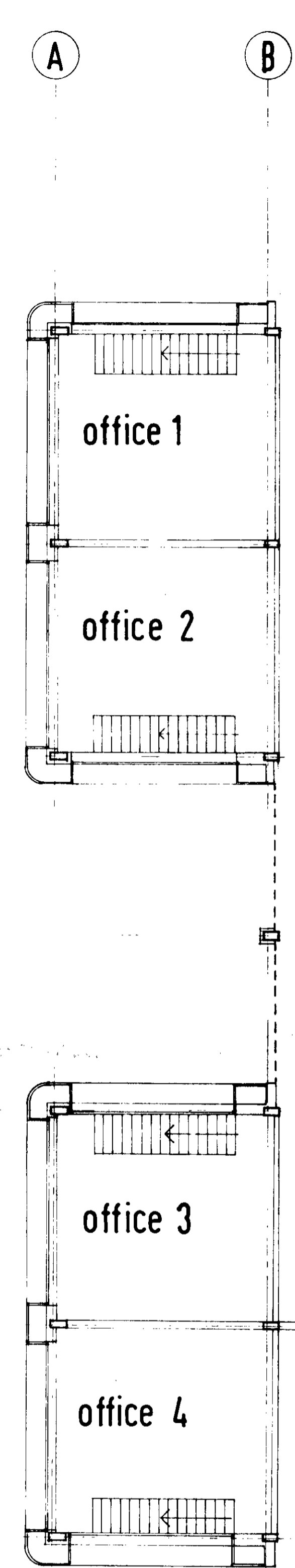
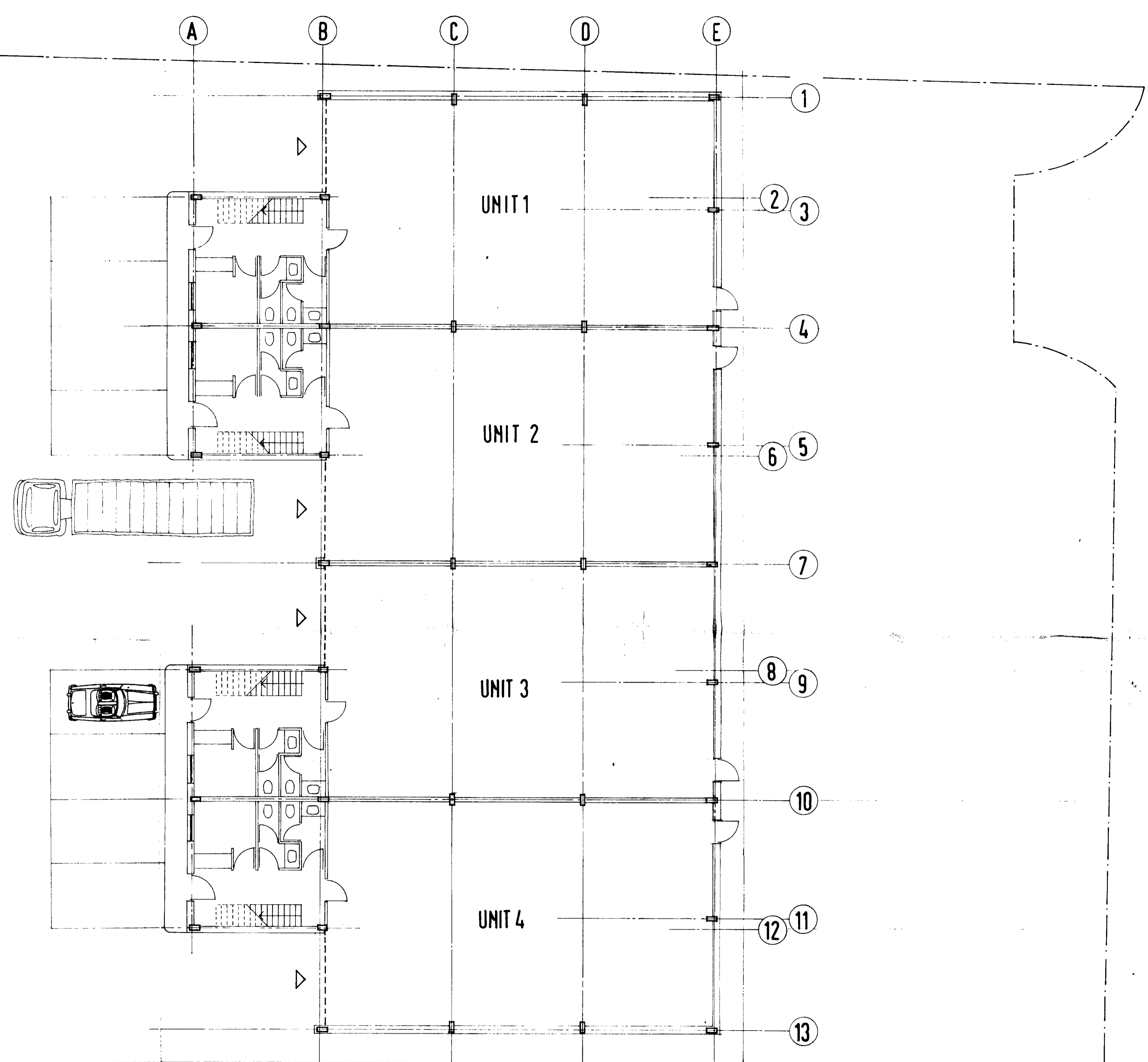
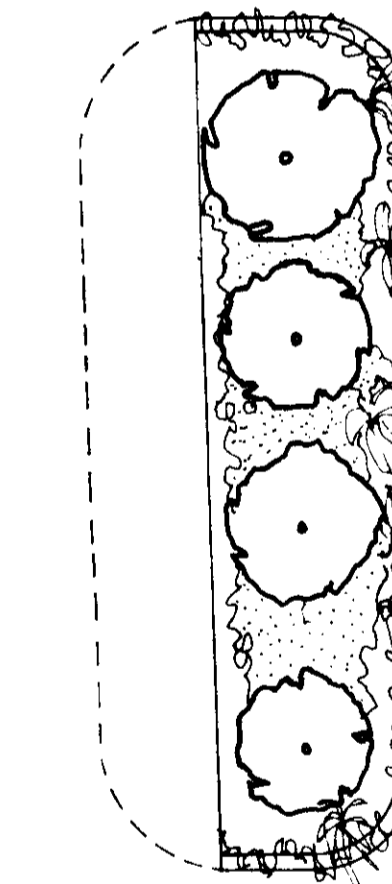
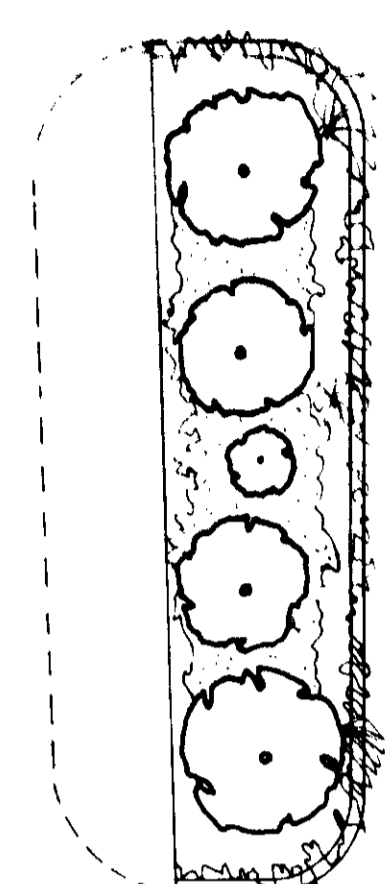
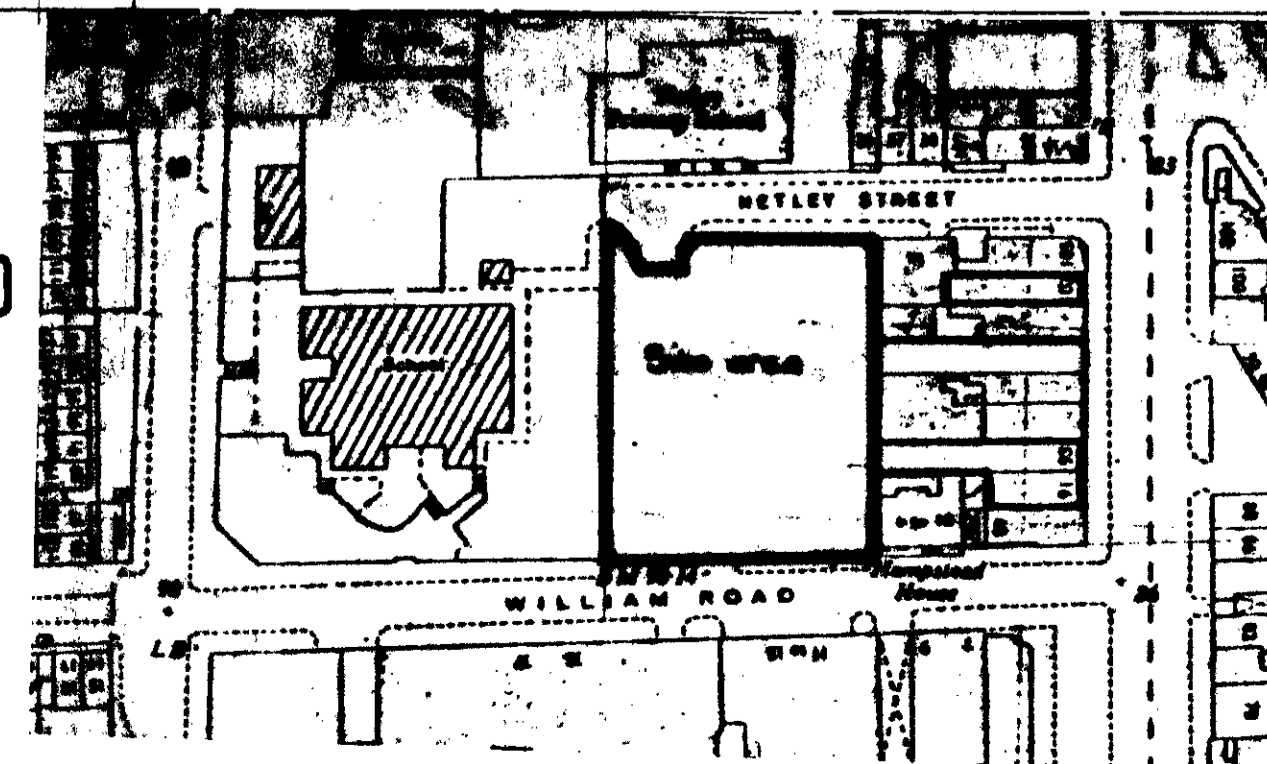


WILLIAM ROAD



Schedule of areas		
4 No. Industrial units of 1872.5 sq.ft.	7490	
4 No. Offices of 688.75 sq.ft.	2735	
<b>Total</b>	<b>10225 sq.ft.</b>	

Location Plan 1:1250



FIRST FLOOR PLAN

C: 1/12/9/B/32321

WILLIAM ROAD AND  
NETLEY STREET  
N.W.1.

Date 4.81

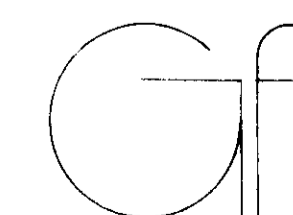
Drawn by R.B.

Checked

PLAN

scheme B.

Scale 1:100



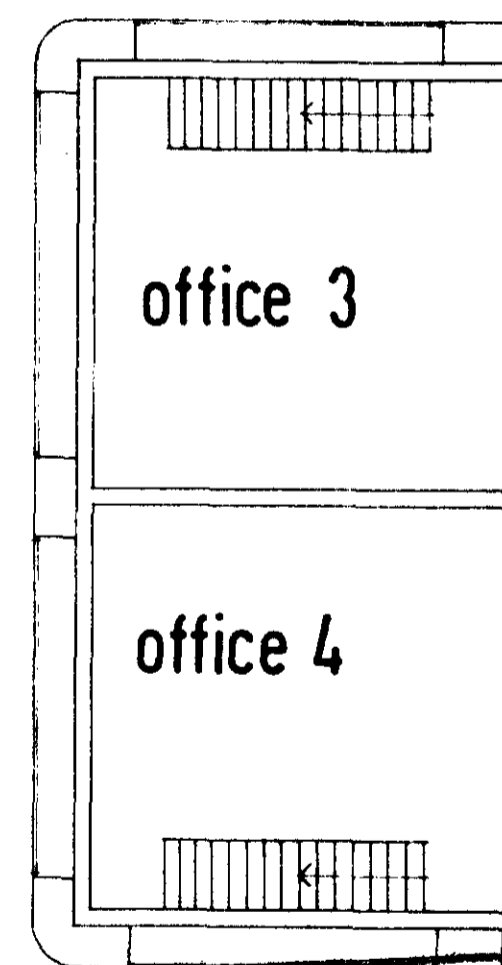
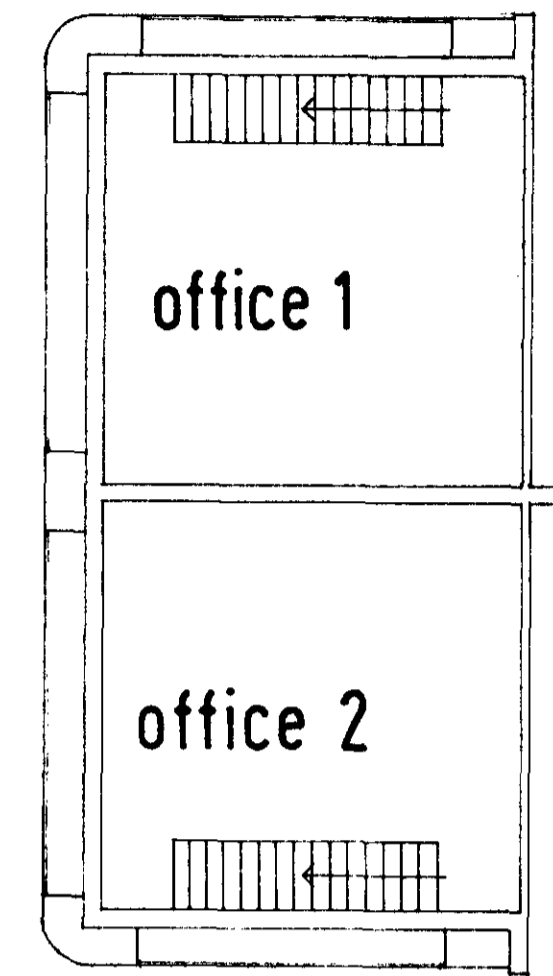
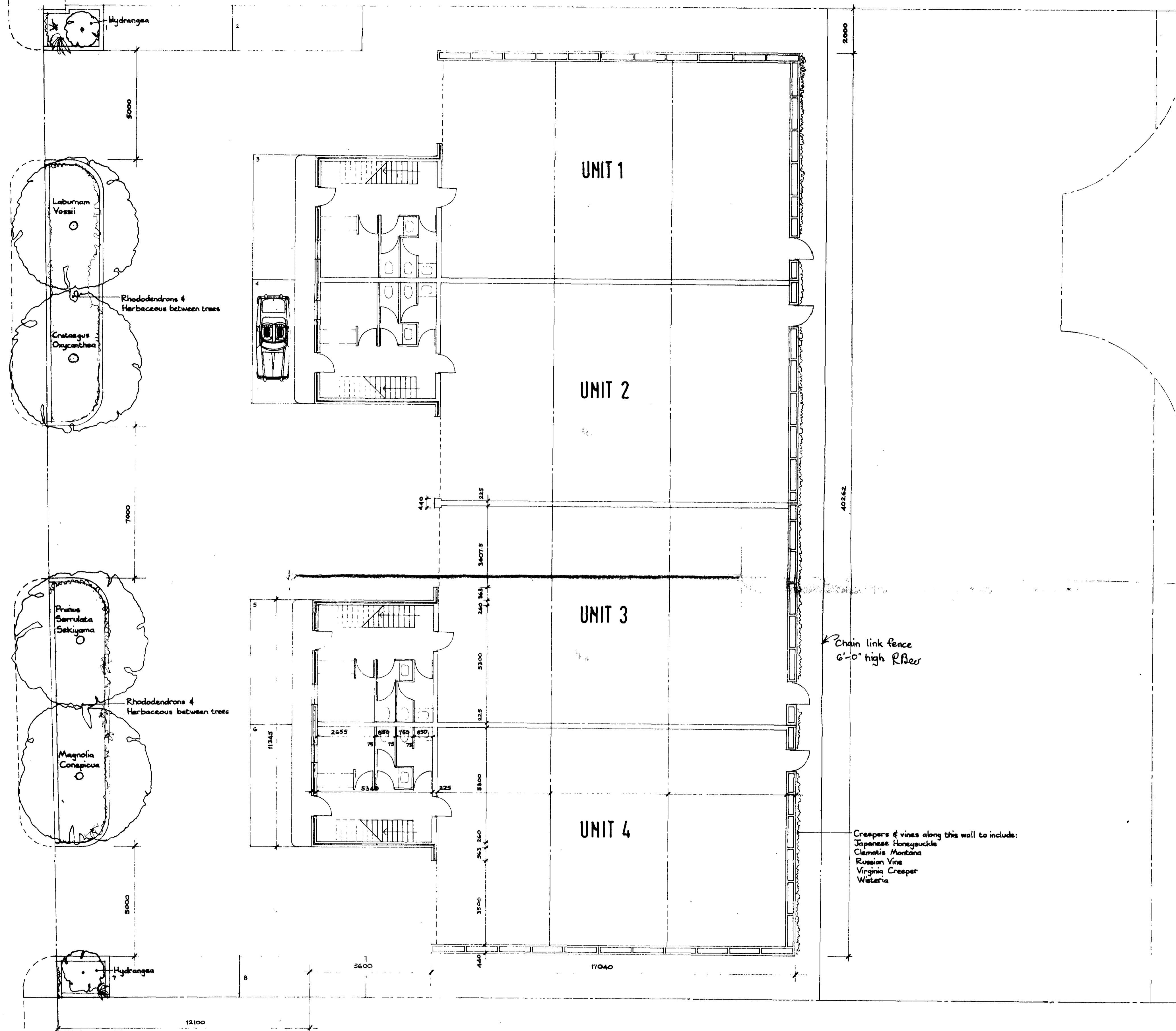
GROGAN ASSOCIATES  
Consultants

93.5

Job No. Drwg No.

3a George Street Richmond Surrey TW9 1JY  
01-940 0106(4lines)

WILLIAM ROAD



PLANNING AND COMMUNICATIONS  
DEPARTMENT  
CAMDEN  
16 JUN 1981

CTP/12/9/B/32321(R2)  
FIRST FLOOR PLAN

C Building re-sited. Planting shown 6.81 R.B.  
2. Schedule of areas shown 5.81 R.B.  
A Re-drawn 5.81 R.B.

WILLIAM ROAD AND NETLEY STREET Date 5.81

LONDON BOROUGH OF CAMDEN TOWN AND COUNTRY PLANNING ACTS 14 JUL 1981

PLANS APPROVED ON BEHALF OF THE COUNCIL 1:100

Schedule of areas	
Industrial/warehouse	7383 sq ft
Ancillary offices	2735 sq ft
Total Area	10118 sq ft

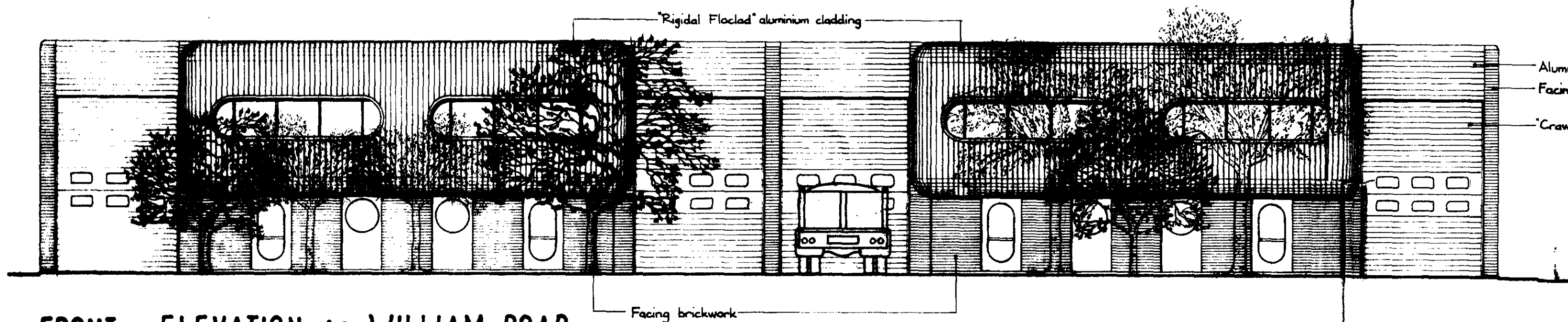
Location plan  
1:1250

Site Area

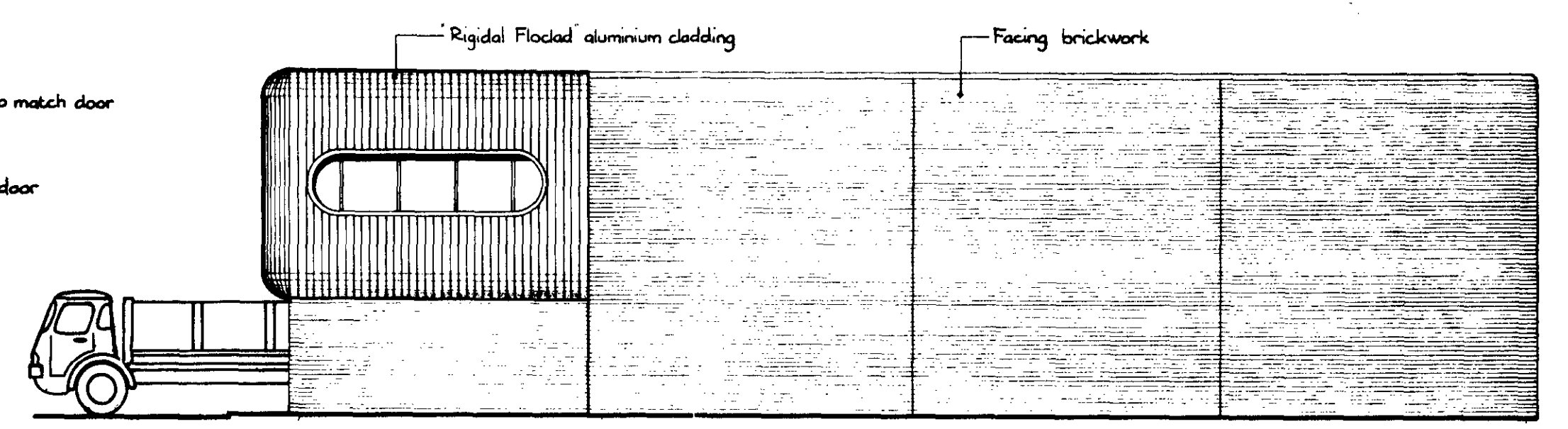
GROGAN ASSOCIATES Consultants  
3a George Street Richmond Surrey TW9 1JY 01940 0106(4 lines)

GA93:7  
Job No. \_\_\_\_\_  
Drawg No. \_\_\_\_\_

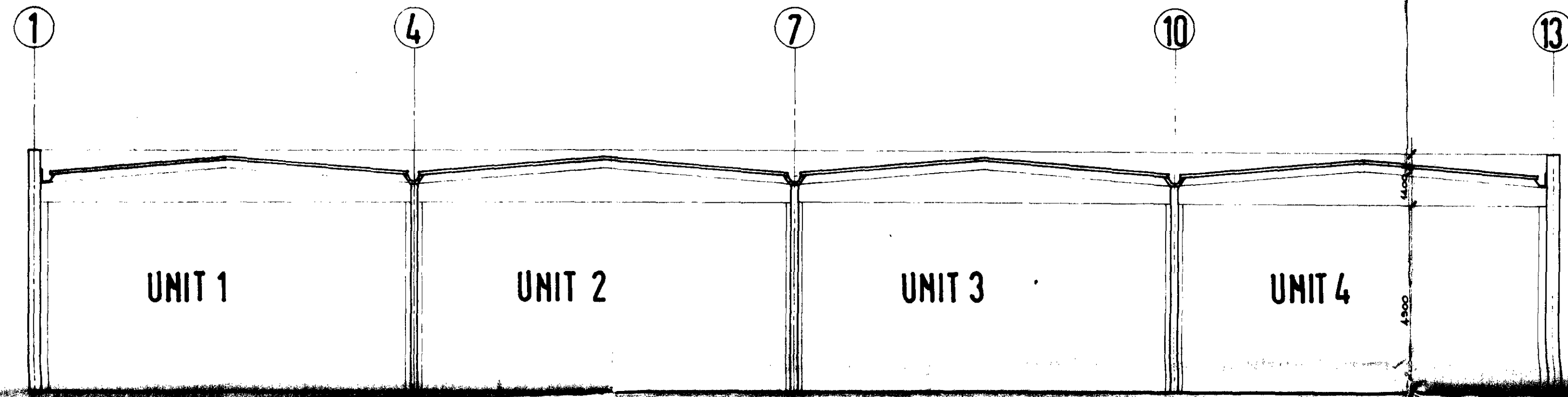
A	B	C



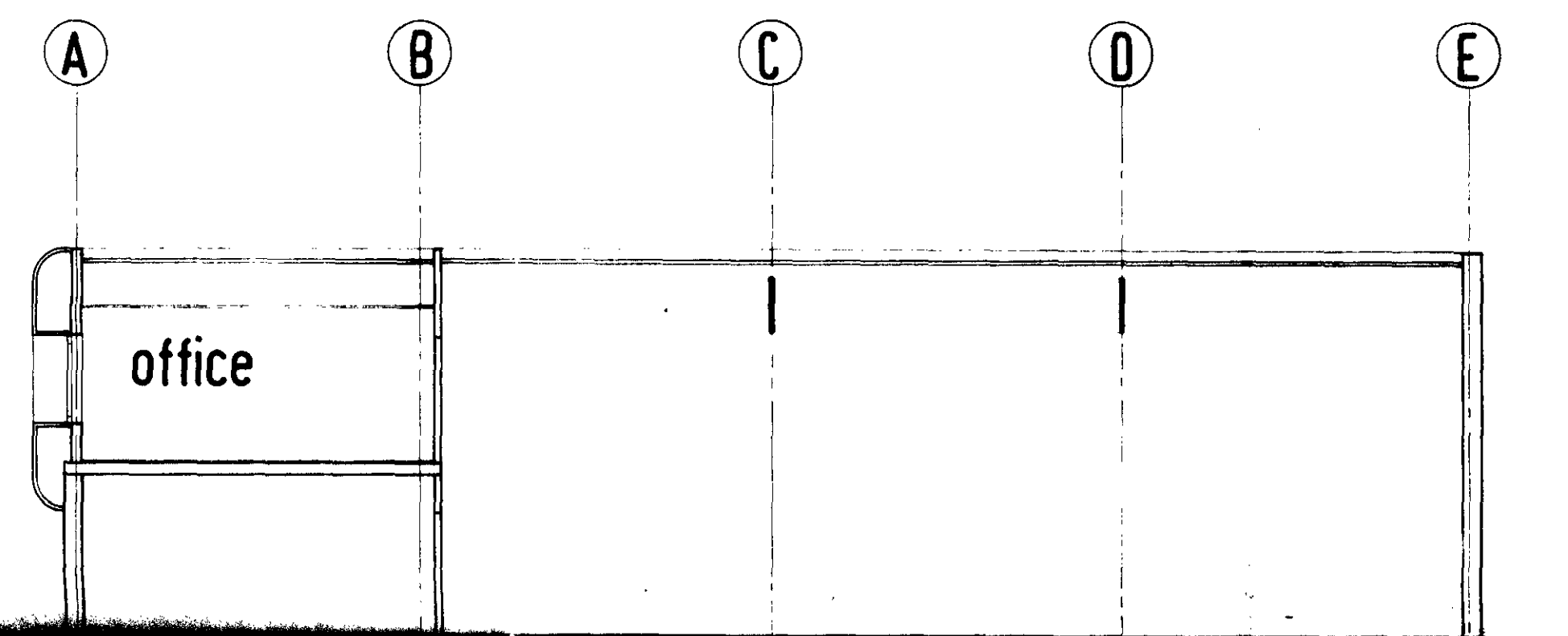
FRONT ELEVATION to WILLIAM ROAD



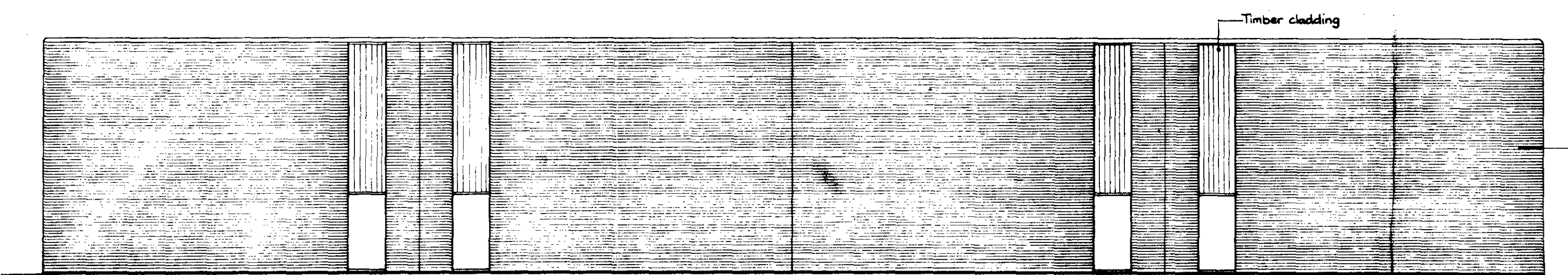
EAST ELEVATION



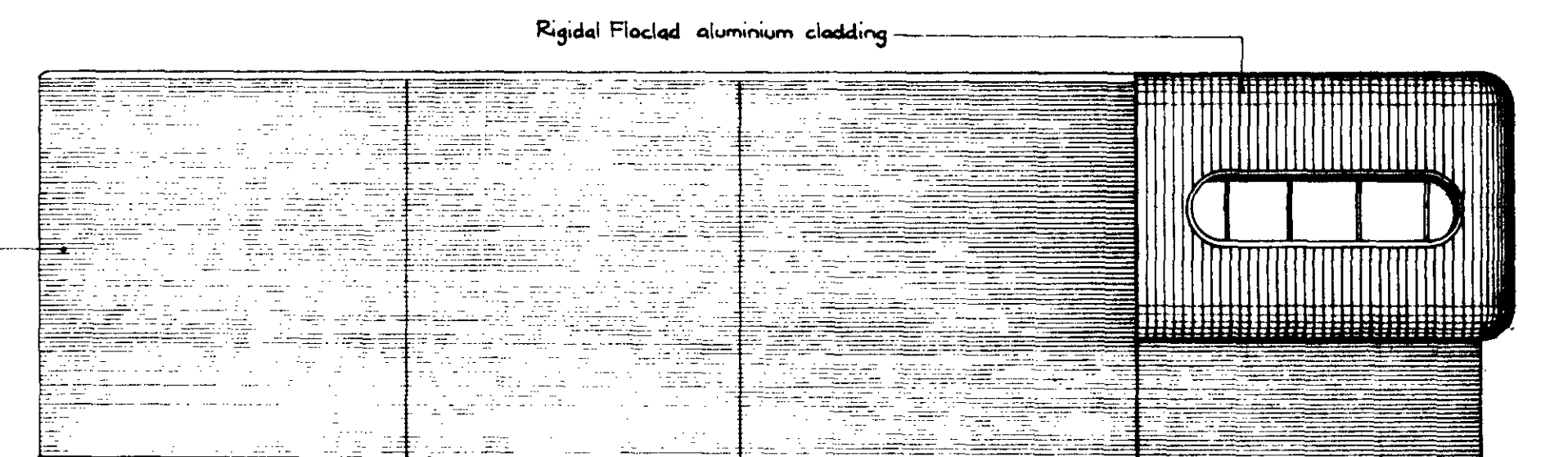
SECTION A A



SECTION B B



NORTH ELEVATION



WEST ELEVATION

CTP/42/9/B/32/32/1

WILLIAM ROAD AND  
NETLEY STREET  
N.W.1

DATE 4 81  
LONDON BOROUGH OF CAMDEN  
TOWN AND COUNTRY PLANNING ACTS  
14 JUL 1981  
DRAWN BY RB  
APPROVED  
ON BEHALF OF THE COUNCIL

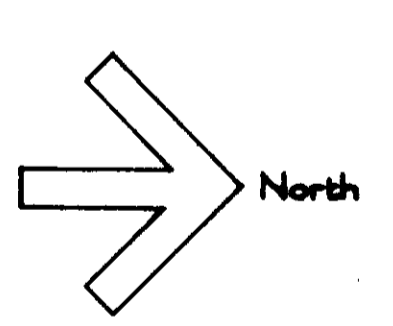
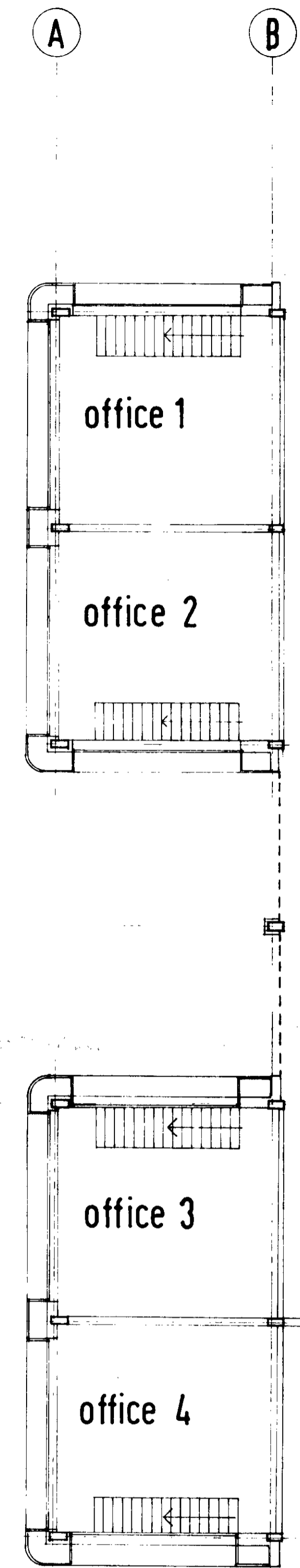
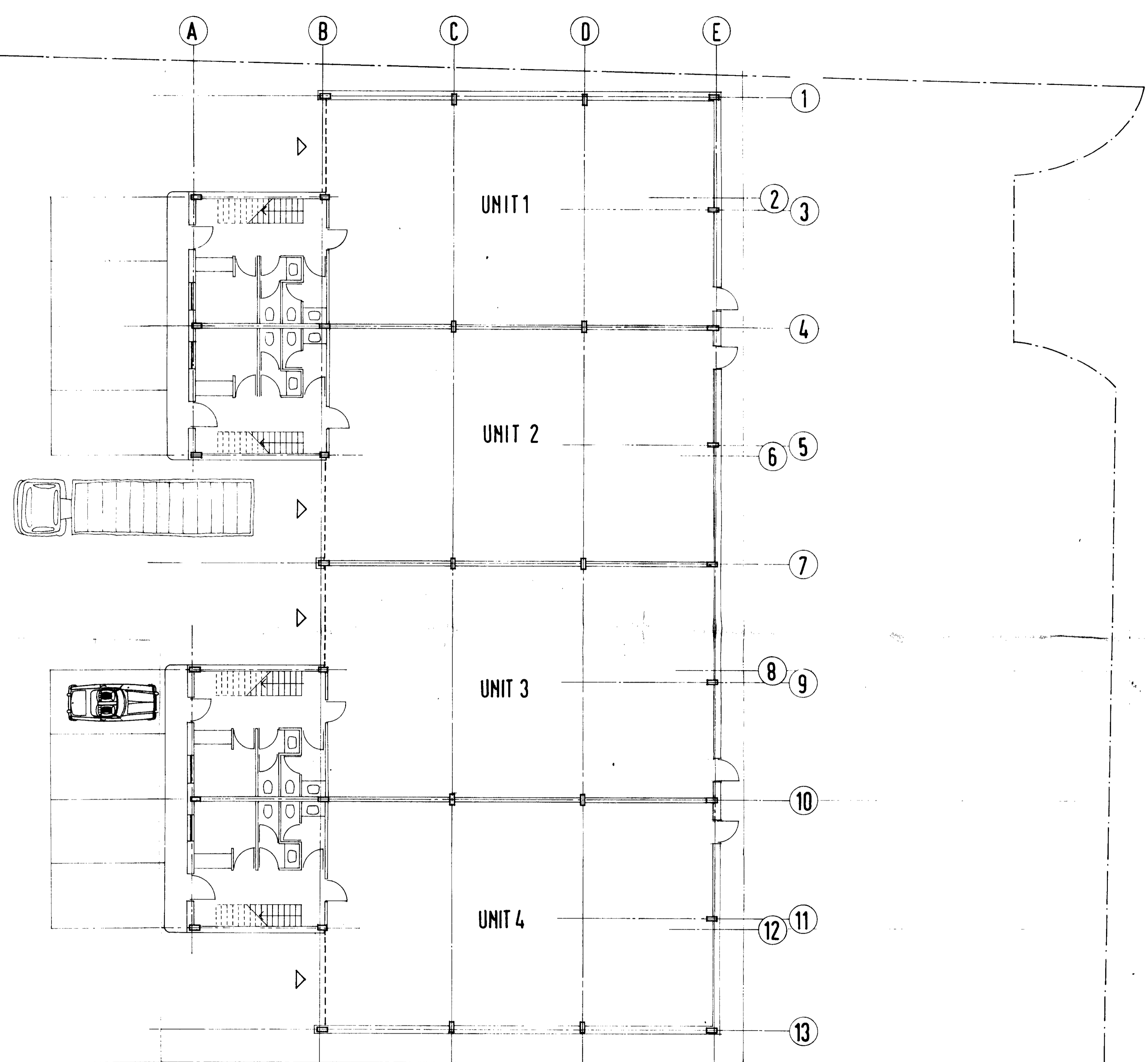
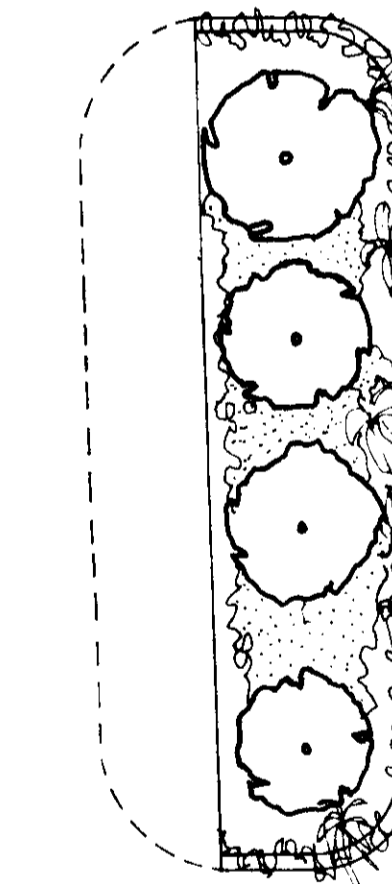
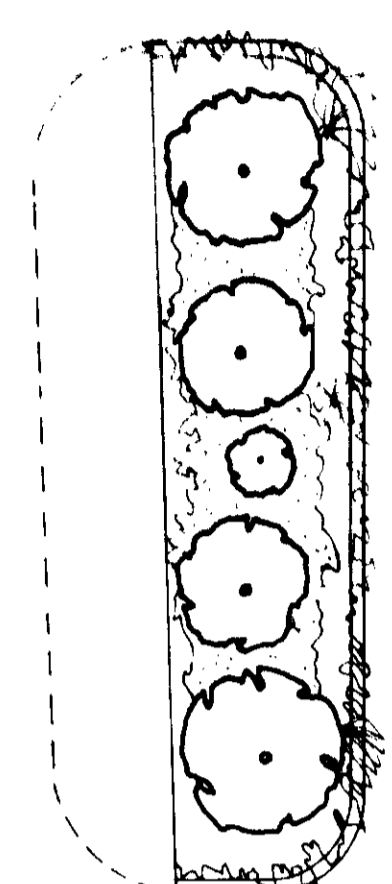
SECTIONS & ELEVATIONS SCALE 1:100

GROGAN ASSOCIATES  
Consultants

GA93 8  
Job No. Drwg No.

5a George Street Richmond Surrey TW9 1JY  
01-940 0106(4lines)

WILLIAM ROAD

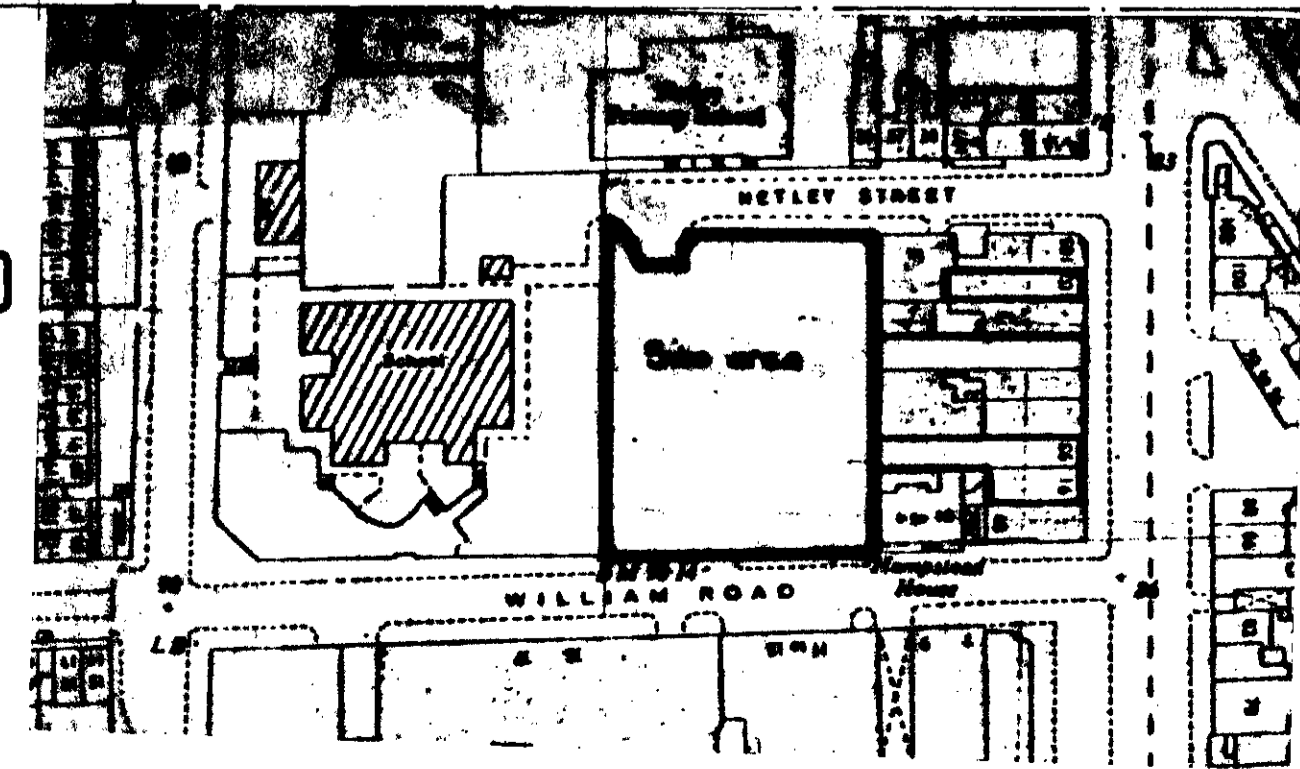


FIRST FLOOR PLAN

C: 1/12/9 / B / 32321

Schedule of areas		
4 No. Industrial units of 1872.5 sq.ft.	7490	
4 No. Offices of 688.75 sq.ft.	2735	
<b>Total</b>	<b>10225 sq.ft.</b>	

Location Plan 1:1250



WILLIAM ROAD AND NETLEY STREET N.W.1.

Date 4.81

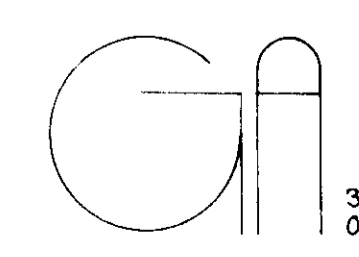
Drawn by R.B.

Checked

PLAN

scheme B.

Scale 1:100



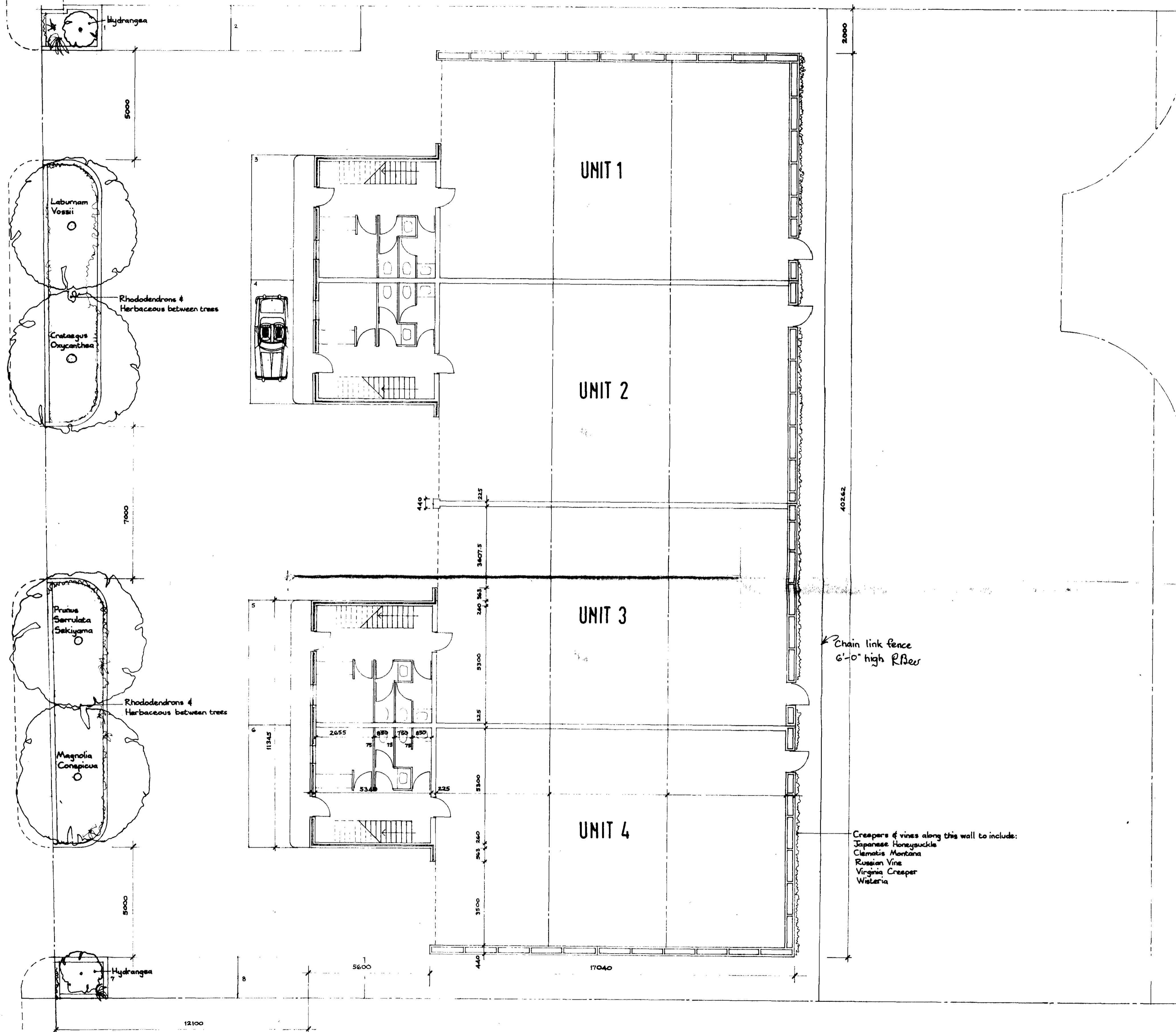
GROGAN ASSOCIATES Consultants

93.5 Job No. Drwg No.

3a George Street Richmond Surrey TW9 1JY 01940 0106(4lines)



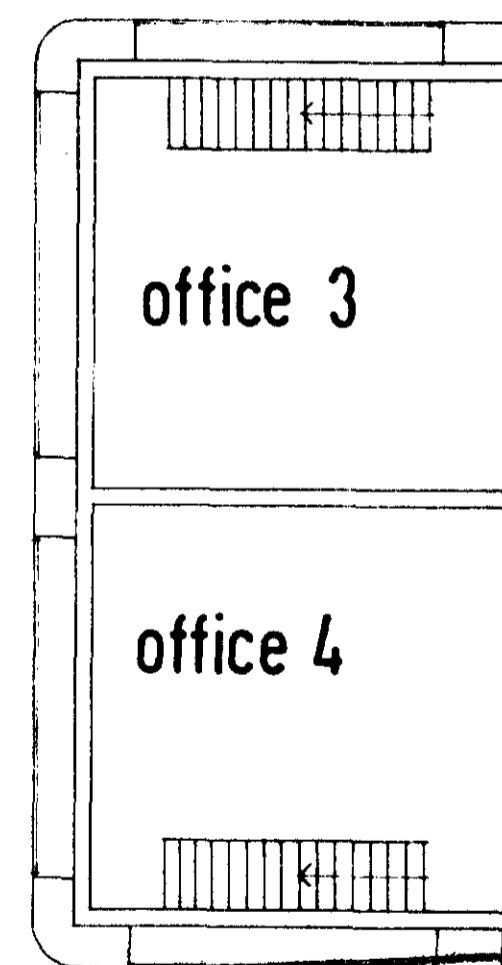
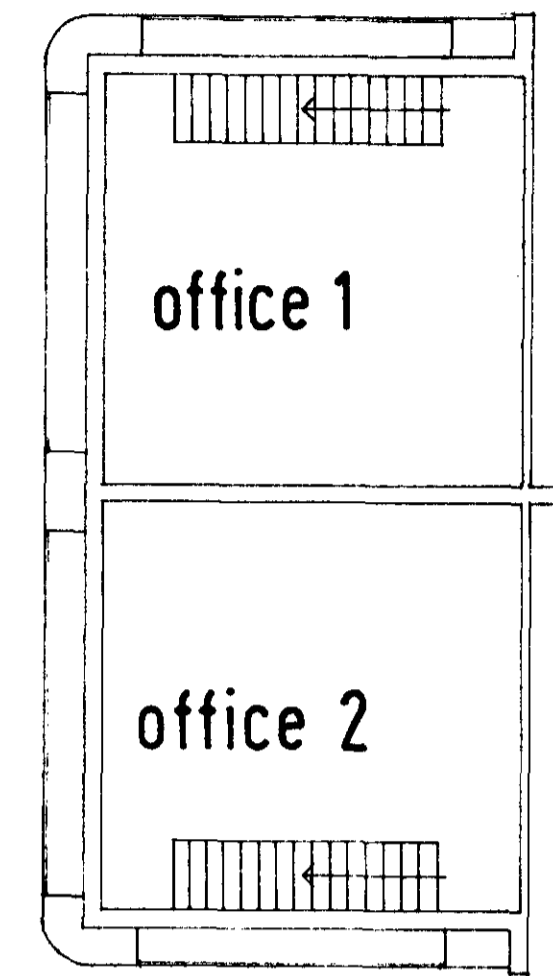
WILLIAM ROAD



Schedule of areas	
Industrial/warehouse	7383 sq ft
Ancillary offices	2735 sq ft
<b>Total Area</b>	<b>10118 sq ft</b>

Location plan  
1:1250

Site Area



PLANNING AND COMMUNICATIONS  
DEPARTMENT  
CAMDEN  
16 JUN 1981  
VOL. NO.  
ACK. NO.  
REFERRED TO:

CTP/12/9/B/32321(R2)  
FIRST FLOOR PLAN

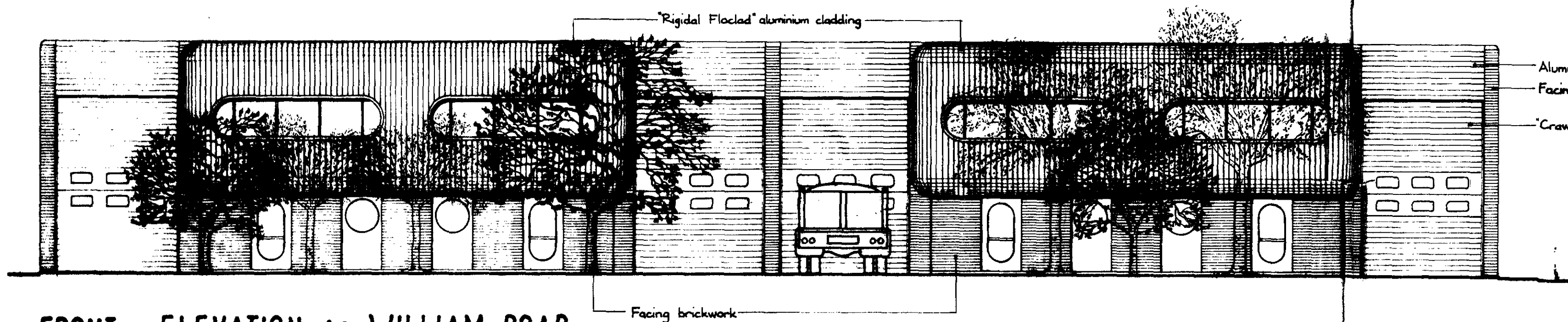
C Building re-sited. Planting shown	6.81	R.B.
Z. Schedule of areas shown	5.81	R.B.
A. Re-drawn	5.81	R.B.

WILLIAM ROAD AND  
NETLEY STREET Date 5.81

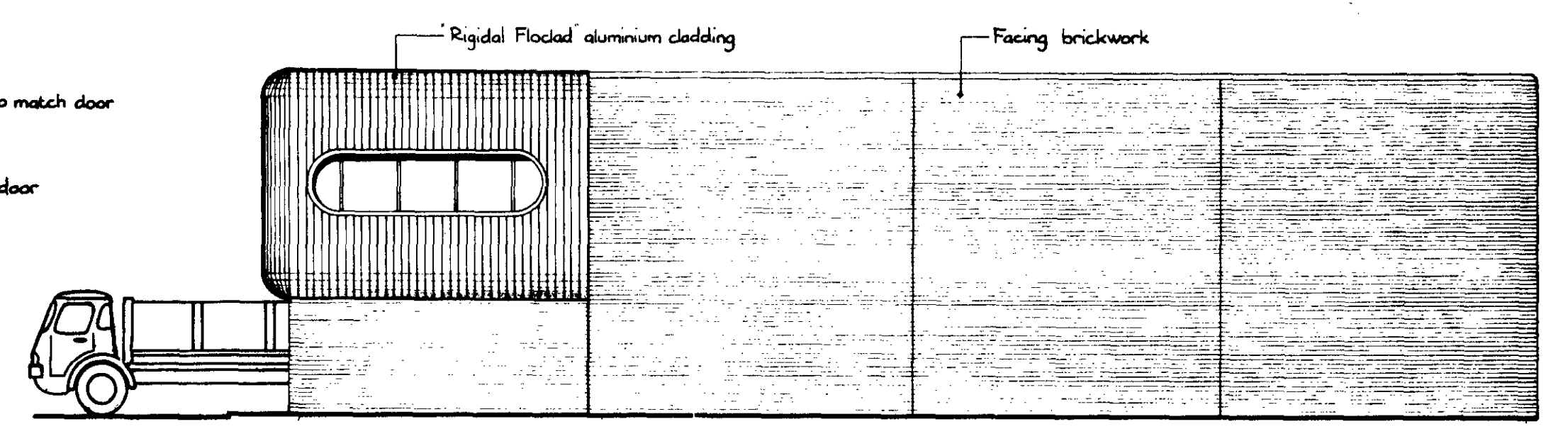
PLAN LONDON BOROUGH OF CAMDEN  
TOWN AND COUNTRY PLANNING ACTS  
14 JUL 1981  
Checked by R.B.

PLANS APPROVED  
ON BEHALF OF THE COUNCIL  
1:100

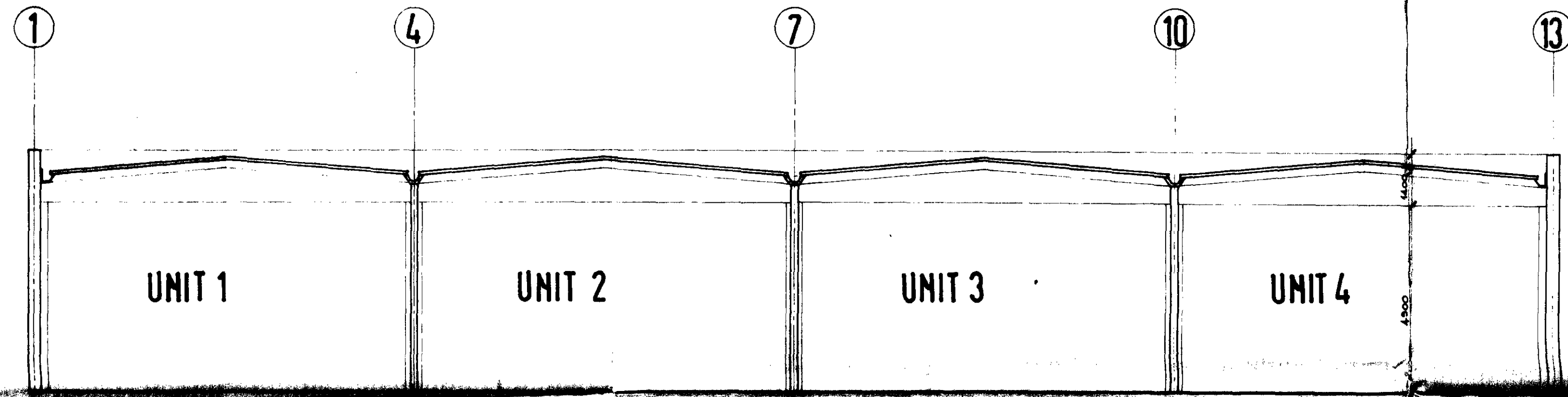
GROGAN ASSOCIATES  
Consultants  
Job No. 10118  
Drawg No. GA93:7  
3a George Street Richmond Surrey TW9 1JY  
01940 0106(4 lines)



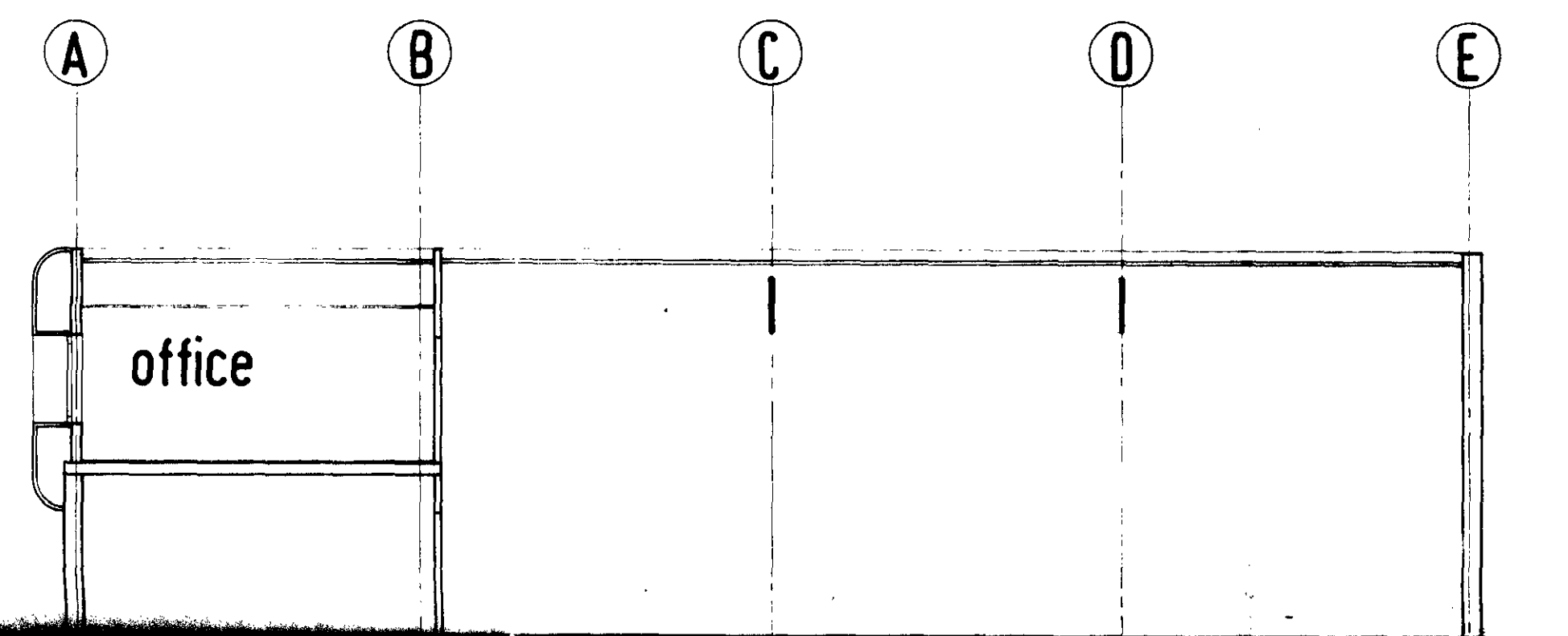
FRONT ELEVATION to WILLIAM ROAD



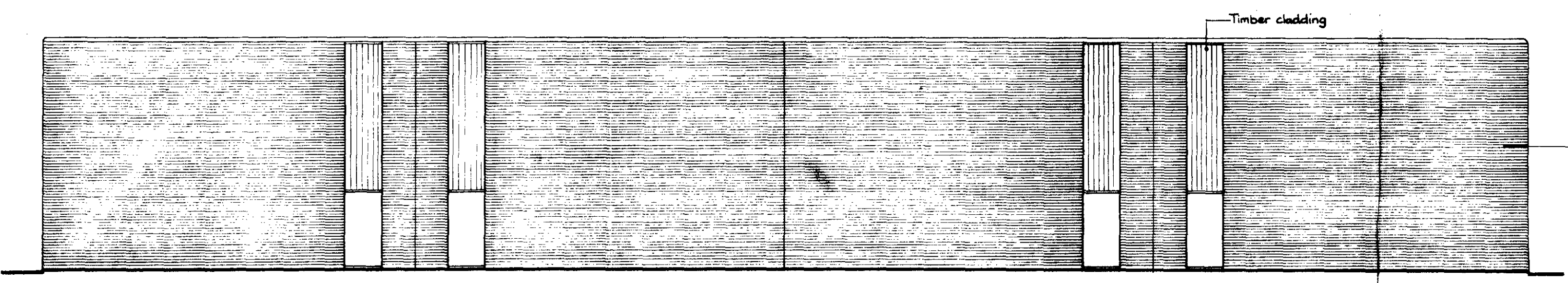
EAST ELEVATION



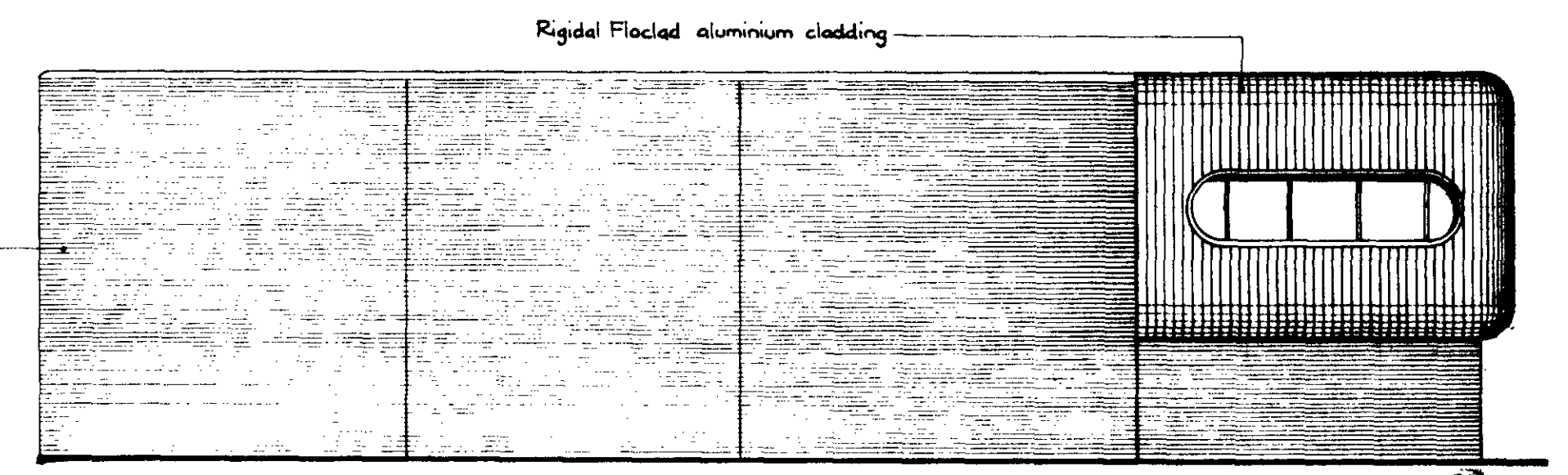
SECTION A A



SECTION B B



NORTH ELEVATION



WEST ELEVATION

CTP/42/9/B/32/32/1

WILLIAM ROAD AND  
NETLEY STREET  
N.W.1

DATE 4 81  
LONDON BOROUGH OF CAMDEN  
TOWN AND COUNTRY PLANNING ACTS  
14 JUL 1981  
DRAWN BY RB  
APPROVED  
ON BEHALF OF THE COUNCIL

SECTIONS & ELEVATIONS SCALE 1:100

GROGAN ASSOCIATES  
Consultants

GA93 8  
Job No. Drwg No.

5a George Street Richmond Surrey TW9 1JY  
01-940 0106(4lines)