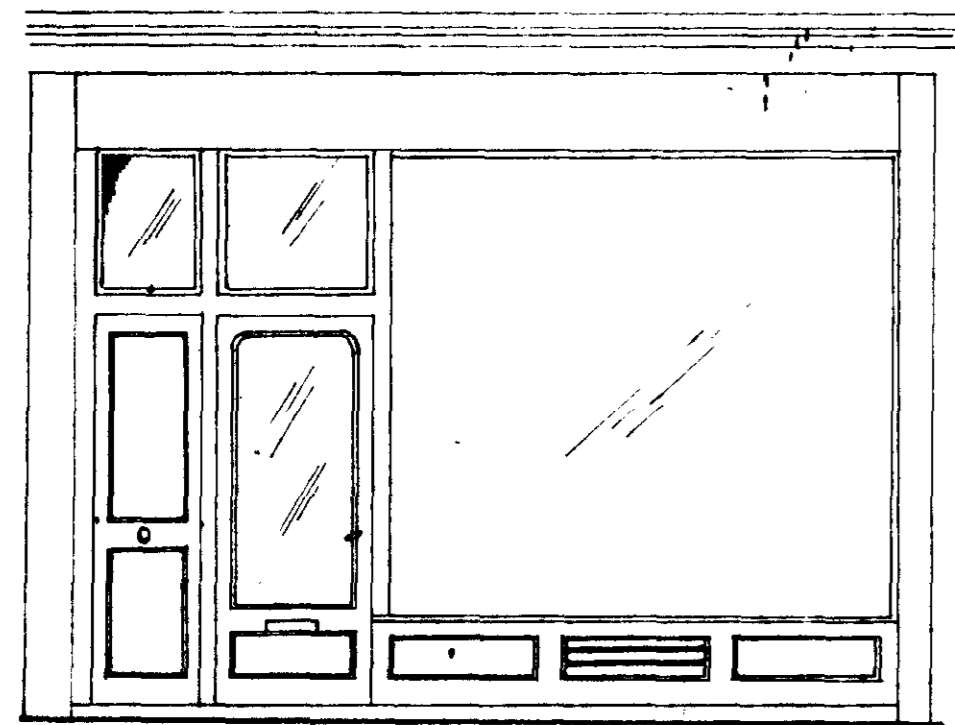
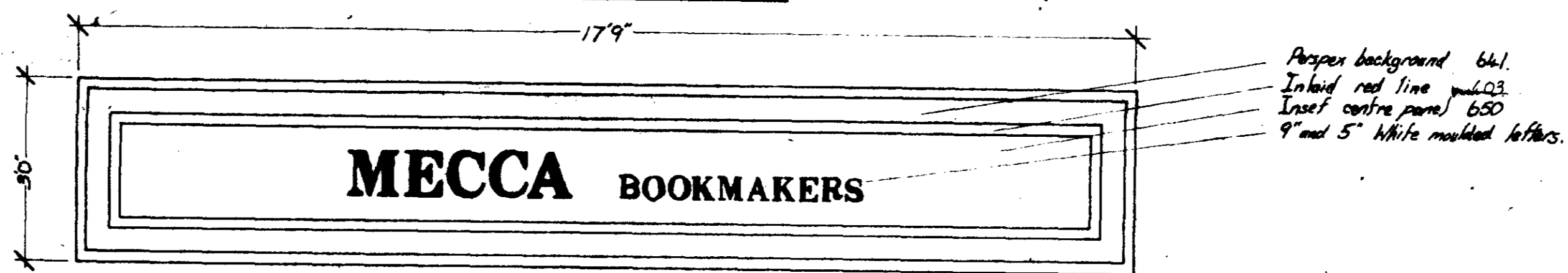
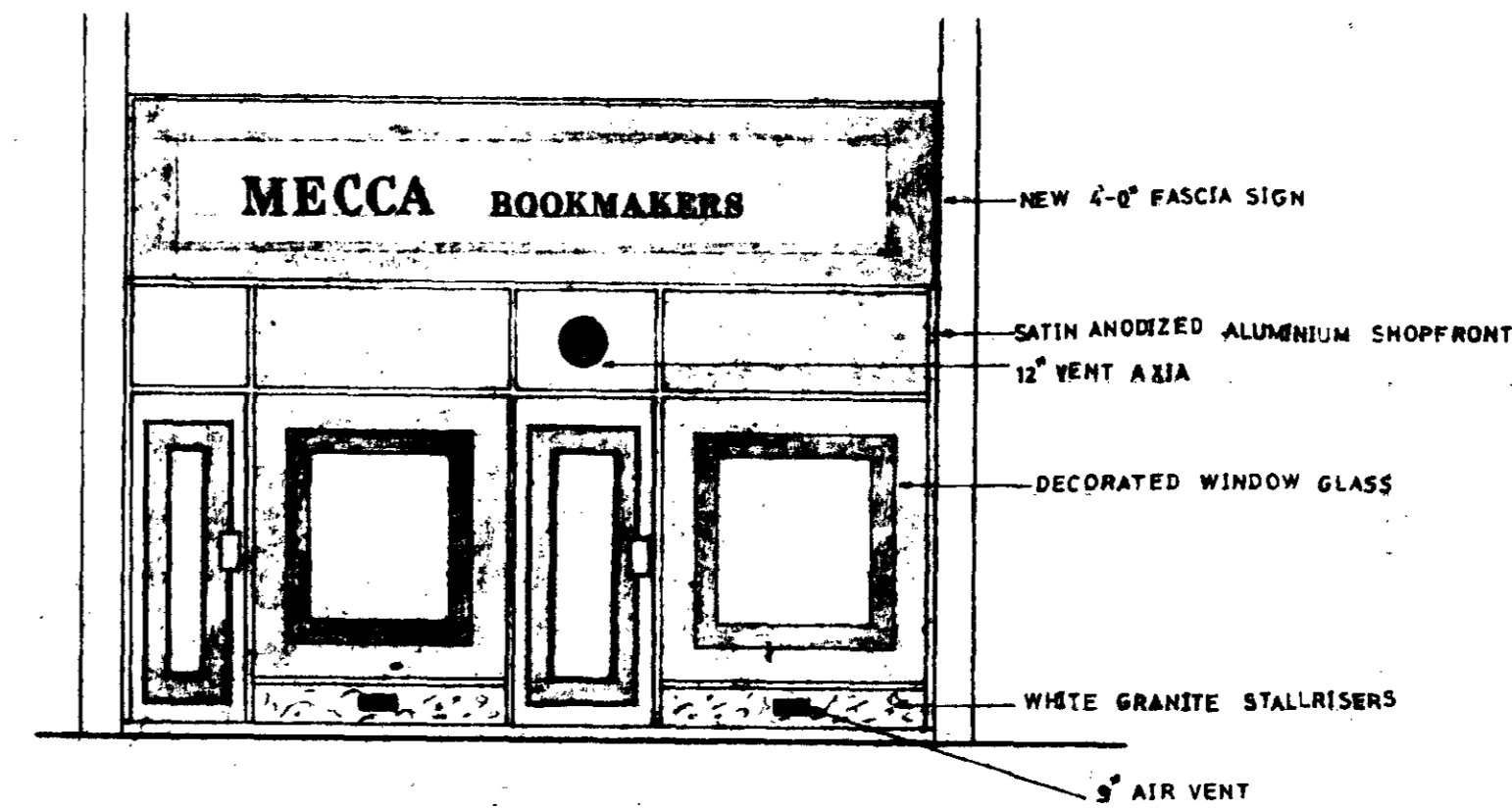
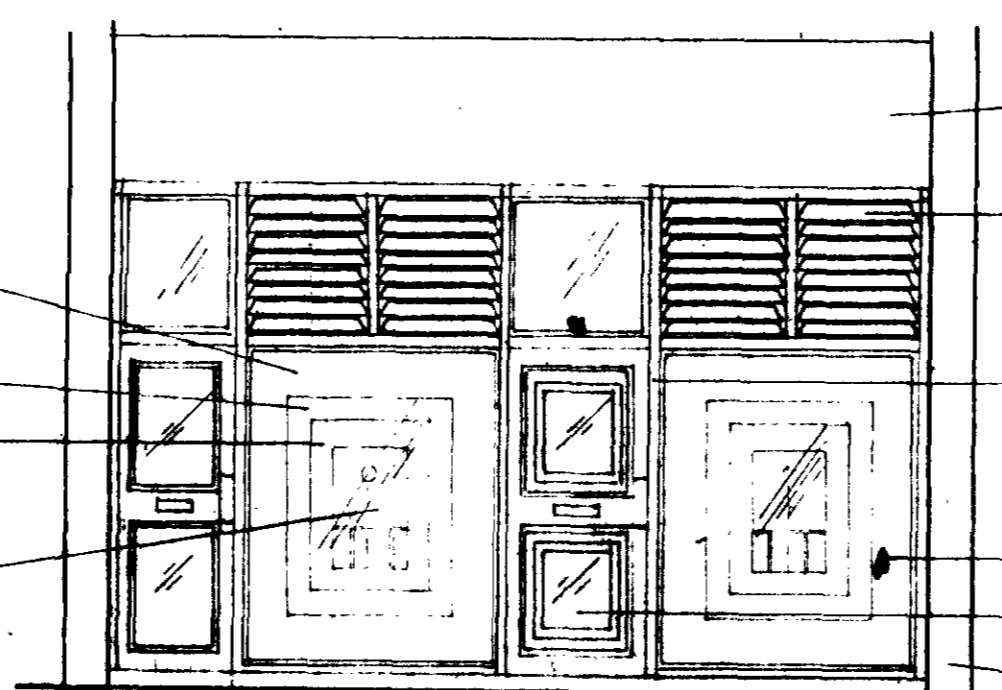


enlargement of fascia Scale: 1/2 to 1/0"



existing front elevation

Glass painted internally with Dark Green band
 Dulux "Hollybush"
 Perspex 650 (dark green)
 Perspex 403 (red)
 Background panel Perspex 650 with
 "Warming Post" motif

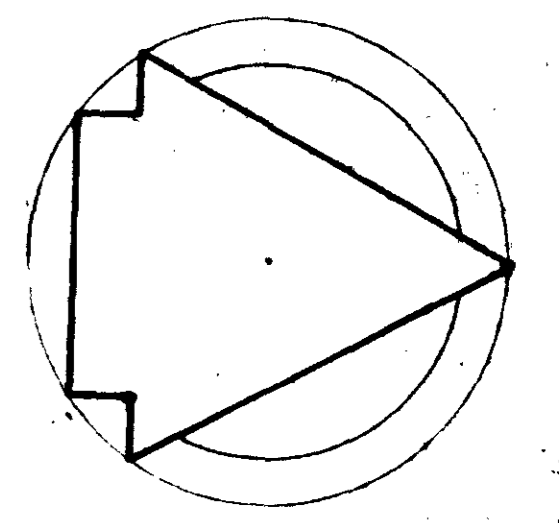


proposed shopfront elevation

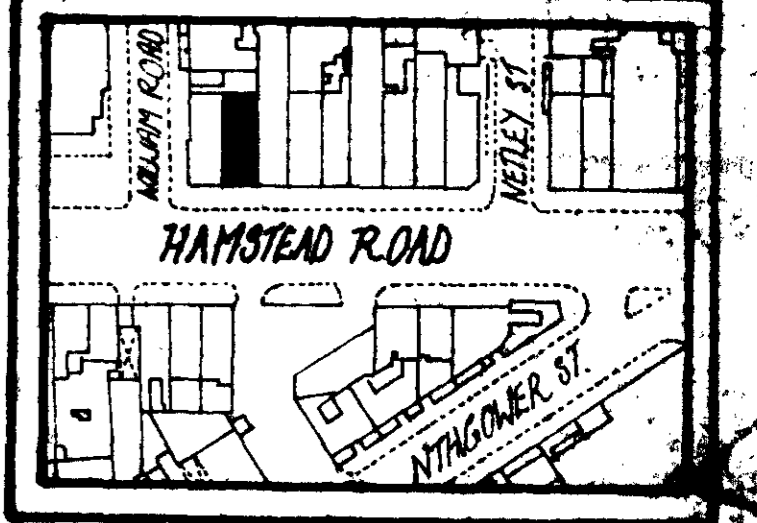
Notes and Revisions

- 1) recessed modular light fitting
- 2) dimplex heater
- 3) globe light fitting
- 4) recessed spotlight
- 5) light switch
- 6) 13 amp socket
- 7) 13 amp twin socket outlet
- 8) emergency lighting
- 9) telephone

CTP/14/9/2/26071



block plan 1:1250



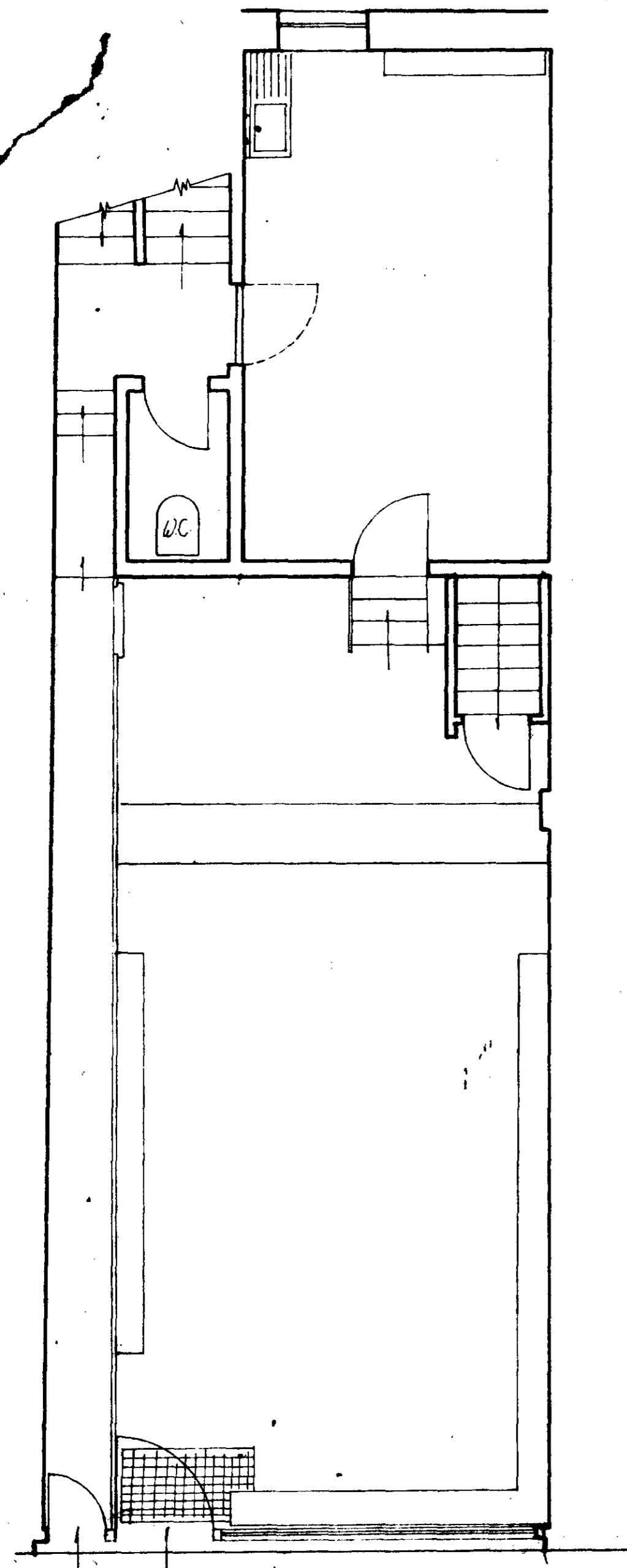
Betting Office at,
 91, HAMPSTEAD RD,
 N.W.1.
 for, Mecca
 Bookmakers Ltd.

Date: 10th October 1973
 Scale: 1:50 Metric
 Drawing No: BO-HR-173

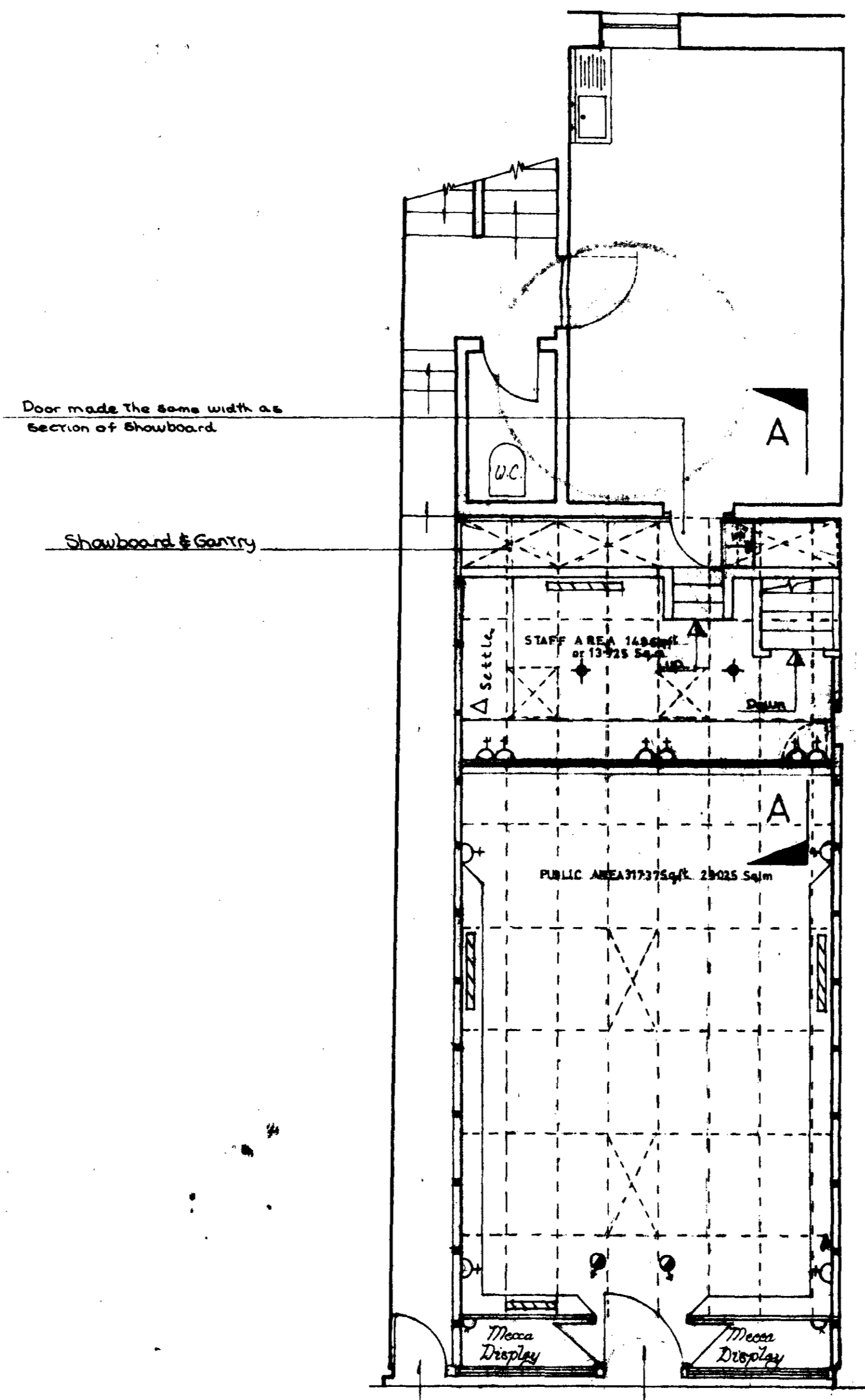
Mecca Bookmakers Ltd.
 Estates Department,
 70-74, City Road,
 London, E.C.1.

LONDON BOROUGH OF CAMDEN
 TOWN AND COUNTRY PLANNING ACTS
 23 MAY 1978
 PLANS ~~NOT~~ APPROVED
 ON BEHALF OF THE COUNCIL

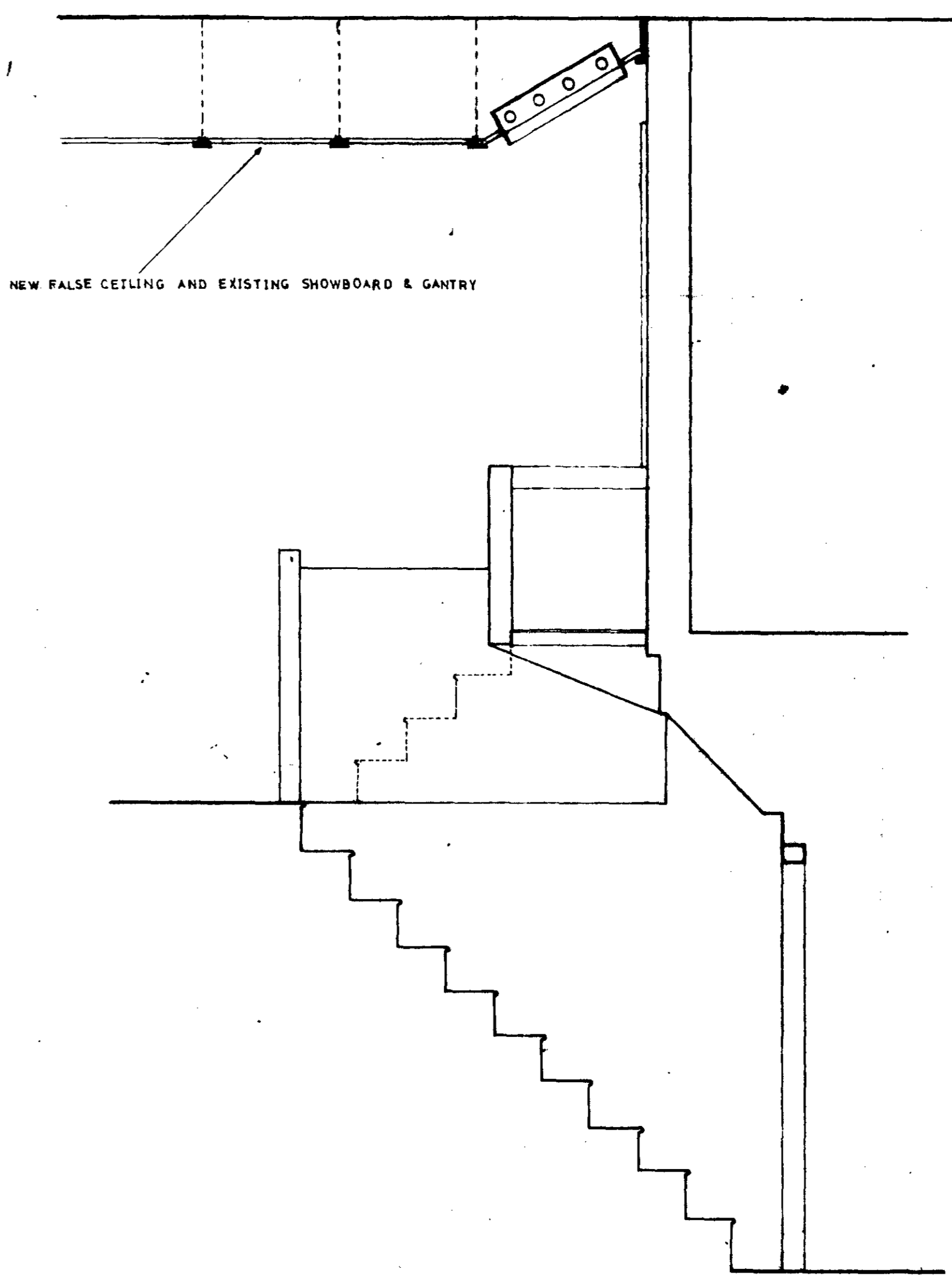
J. H. ... 17/7/78



existing ground floor plan



proposed ground floor plan



section A-A