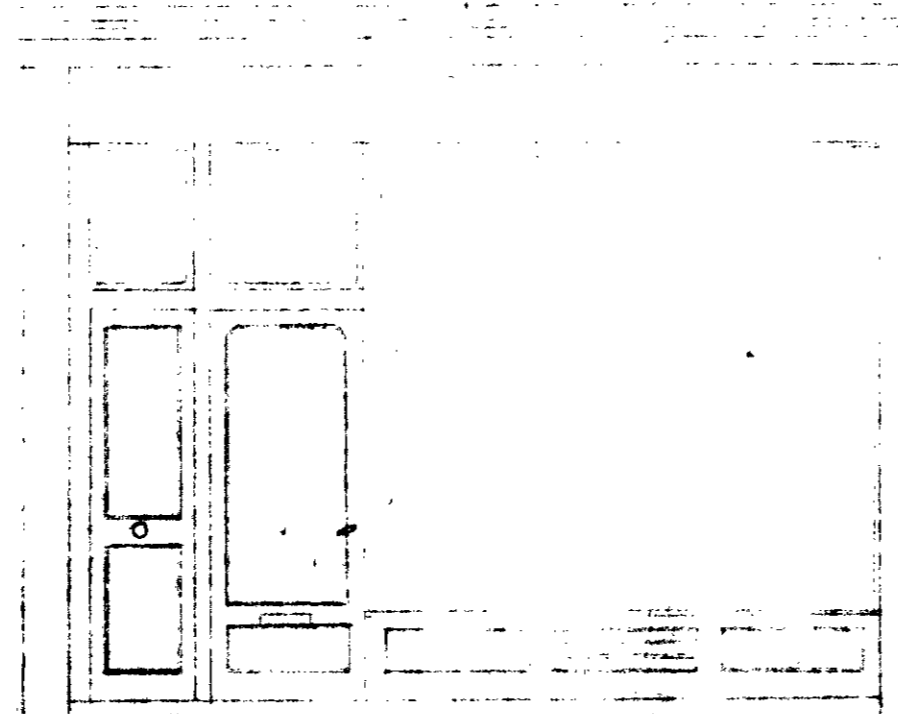


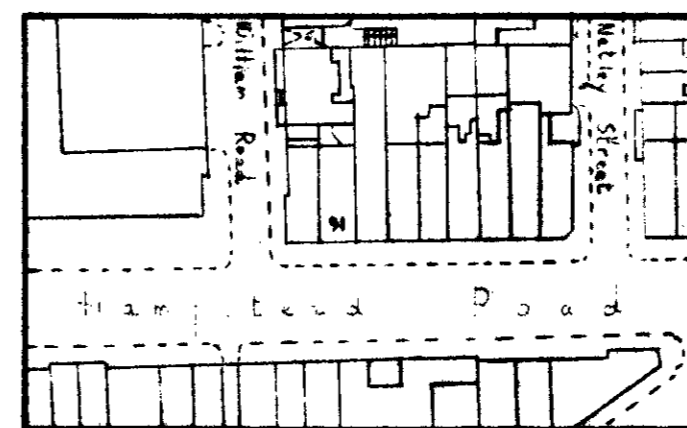
Notes:

All dimensions to be checked on site before any working commences and prepared or work is commenced.

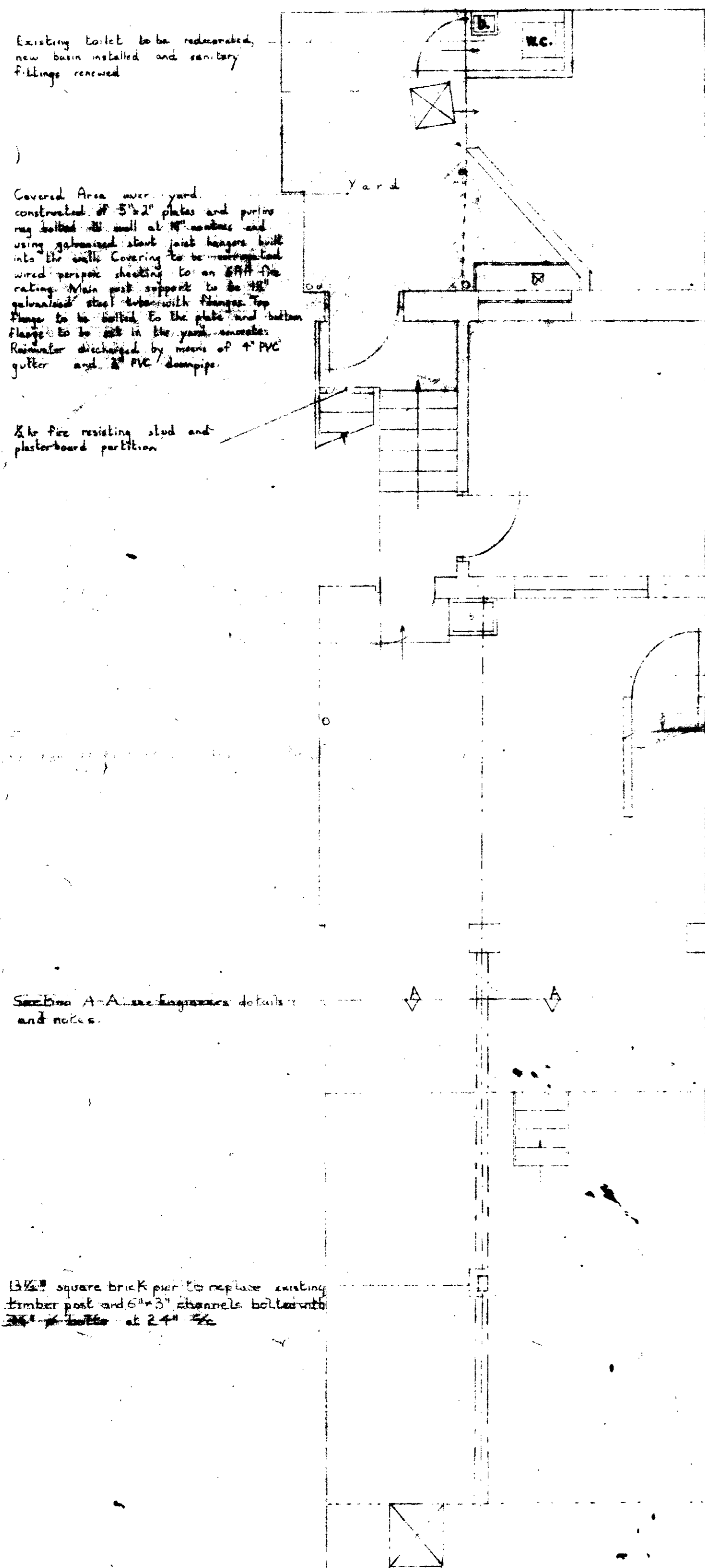
22584



EXISTING FRONT ELEVATION (to remain)



BLOCK PLAN SCALE: 1:1250
Reproduced from O.S. map with the sanction of the Controller of H.M. Stationery Office.
Copyright Reserved.



EXISTING BASEMENT PLAN

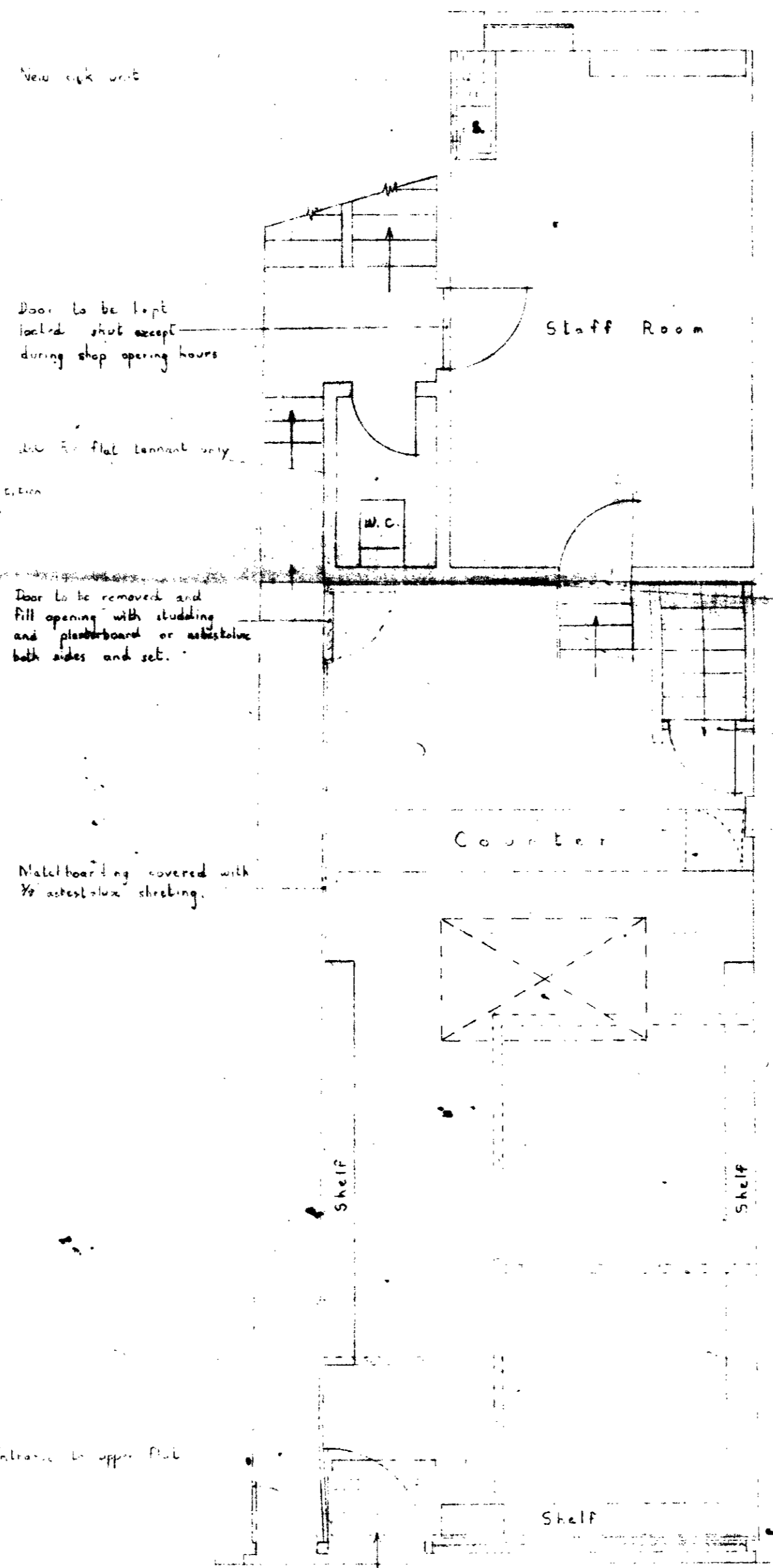
Existing toilet to be redecorated, new basin installed and sanitary fittings renewed.

Covered Area over yard constructed of 5/8" plates and joists using galvanized steel joist hangers built into the wall. Covering to be waterproofed using special decking to an SRA. The ceiling. Main post support to be 18" galvanized steel tubular flange top flange to be bolted to the plate and bottom flange to be set in the yard concrete. Rainwater discharged by means of 4" PVC gutter and 2" PVC downpipe.

Use fire resisting stud and plasterboard partition.

See Draw A-1 for Engineering details and notes.

13/2" square brick pier to replace existing timber post and 6"x3" channels bolted with 3/4" x 1/2" bolts at 2'4" c/c.



PROPOSED GROUND FLOOR PLAN

New sink unit

Door to be kept locked shut except during shop opening hours

Use 5/8" flat cement brick

Use fire resisting partition and self closing door

Door to be removed and fill opening with studing and plasterboard or substitute both sides and set.

Matchboarding covered with 3/8" asbestos sheeting.

Entrance to upper flat

Shelf

Shelf

Shelf

Use 1/2" x 1/2" x 1/2" angled slip across door opening.

Grate across staircase.

New standard City Tote counter, grille, cupboard and till.

Rooflight to have Burglar Bars

Existing partitions and screens to be removed.

4'6" x 2'6" Metal door mat and frame

Revisions:

- 2/1/70 - 2 - Basement plan
- 15/1/70 - 3 - Toilet scheme
- 22/1/70 - 4 - Original toilet to be used
- 27/1/70 - 5 - M/E
- 30/1/70 - 6 - Additional notes
- 4/2/70 - 7 - Plan as above

LONDON BOROUGH OF CAMDEN
LONDON COUNTRY PLANNING AUTHORITY
- 5 AUG 1970
PLANS APPROVED
ON BEHALF OF THE COUNCIL

BETTING
OFFICE AT, No 91,
HAMPSTEAD ROAD,
LONDON, N.W.1.
FOR CITY TOTE
(CENTRAL) LIMITED.

DRAWING No. P/HR/7/69. DATE: Nov '69.
SCALE: 4ft to 1 inch.

Philip and George Gean,
Chartered Surveyors,
York House,
199, Westminster Bridge Road, S.E.1.

1/1/71 1/2/22584