

PRESENTED TO
12 JUN 1958
TOWN PLANNING
COMMITTEE

22315
13 MAR 1958
R.

THE EDITH NEVILLE MEMORIAL HOMES.
RE-DEVELOPMENT SITE LAYOUT.

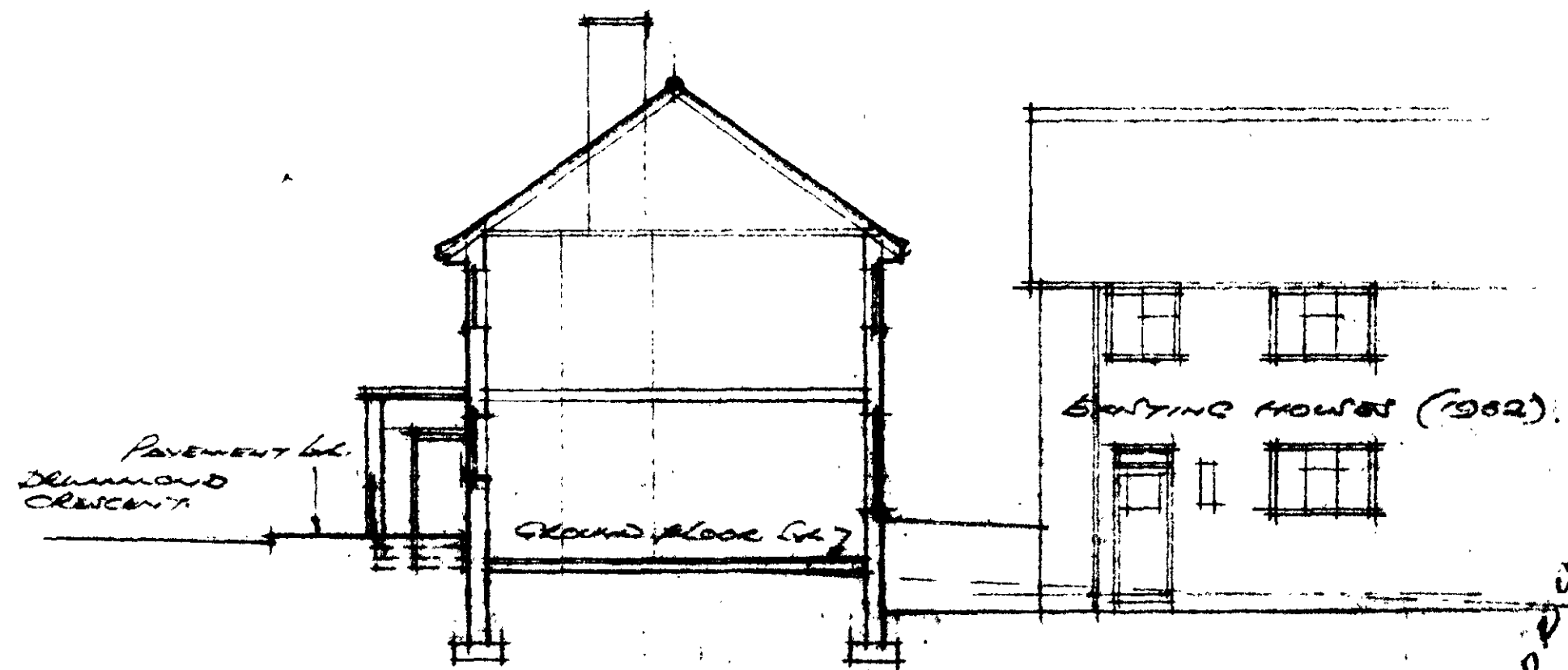
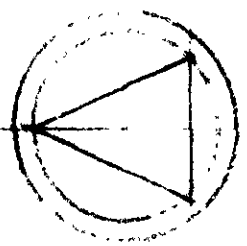
SCALE: 1/8" = 1 FOOT

- 1. 2nd DEVELOPMENT ADDED, MARCH 54.
- 2. FRANK STORES ADDED; LEVELS, 52' 13 AUGUST 54.
- 3. DEVELOPMENT OF END HOUSES; MEMORIAL PLAN 1954.
- 4. PROPOSED DEVELOPMENTS.

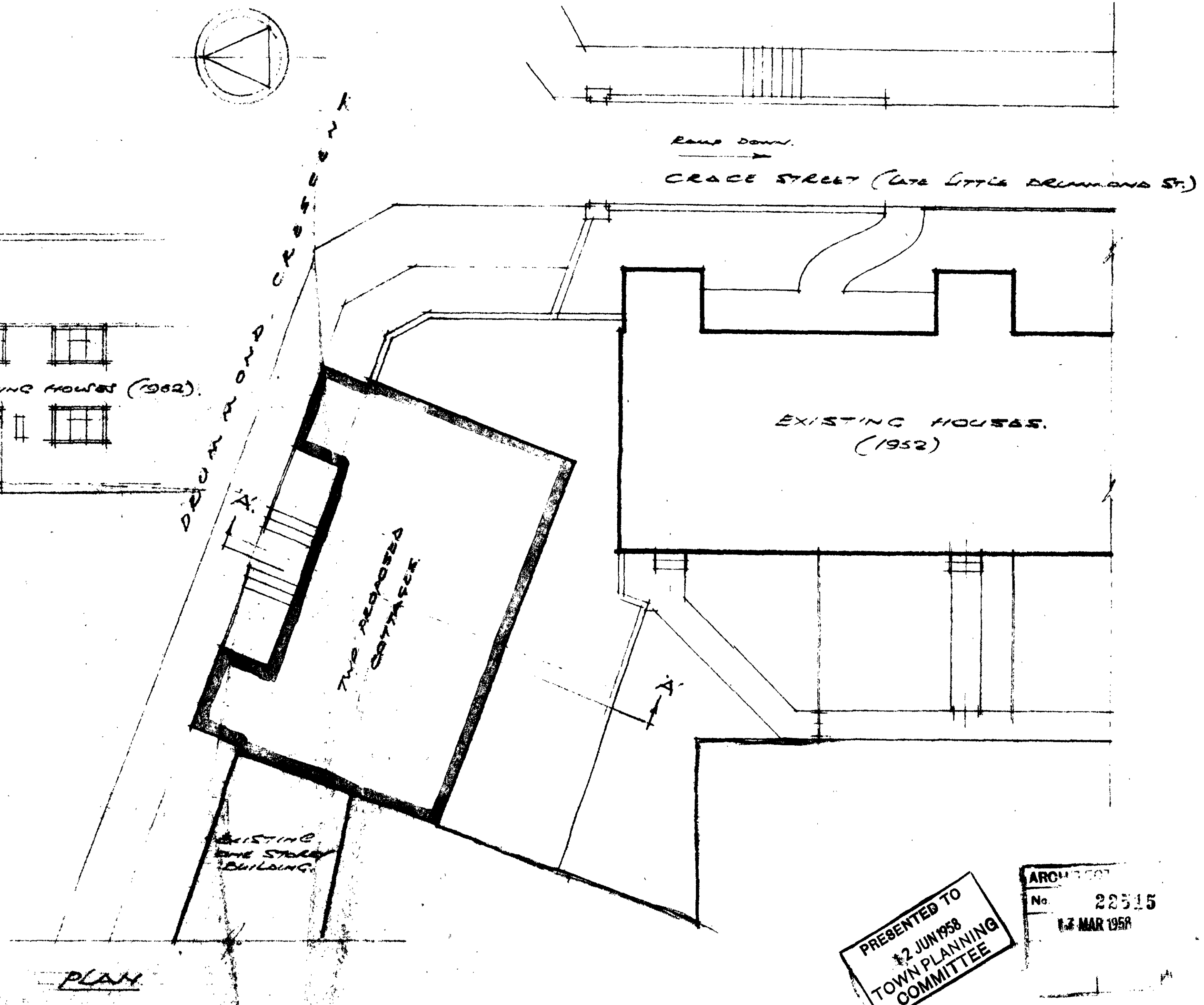
IAN HAMILTON & ALAN CHAMBERS, ARCHITECTS,
16 OLD BUILDINGS,
LINCOLN'S INN, W.C.2

DECEMBER, 1952.

8/3/47



SECTION A.A.



PRESENTED TO
12 JUN 1958
TOWN PLANNING
COMMITTEE

ARCHITECT
No. 22515
17 MAR 1958

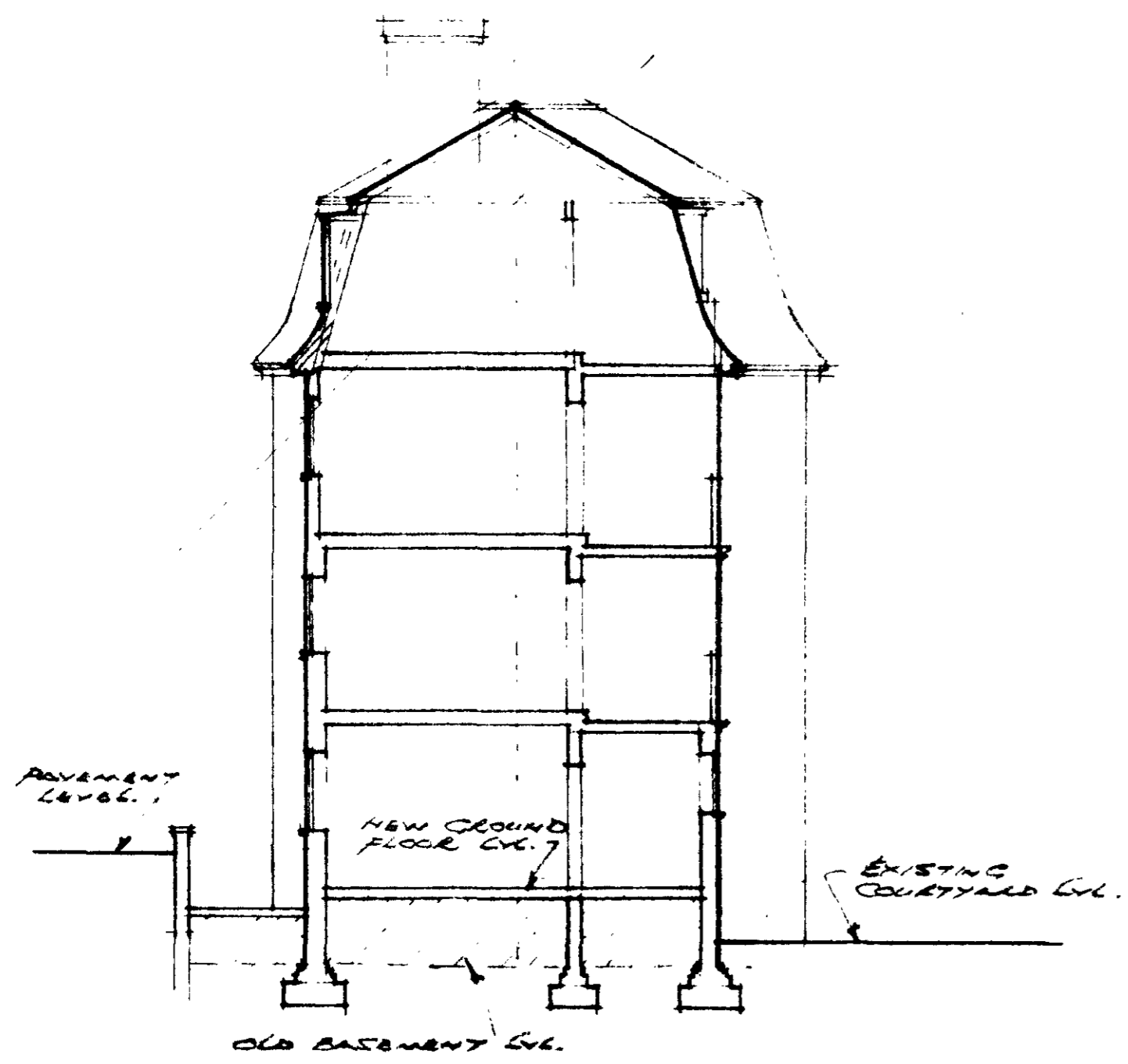
2

TWO PROPOSED COTTAGES, DRUMMOND CRESCENT
ST. PANCRAS.

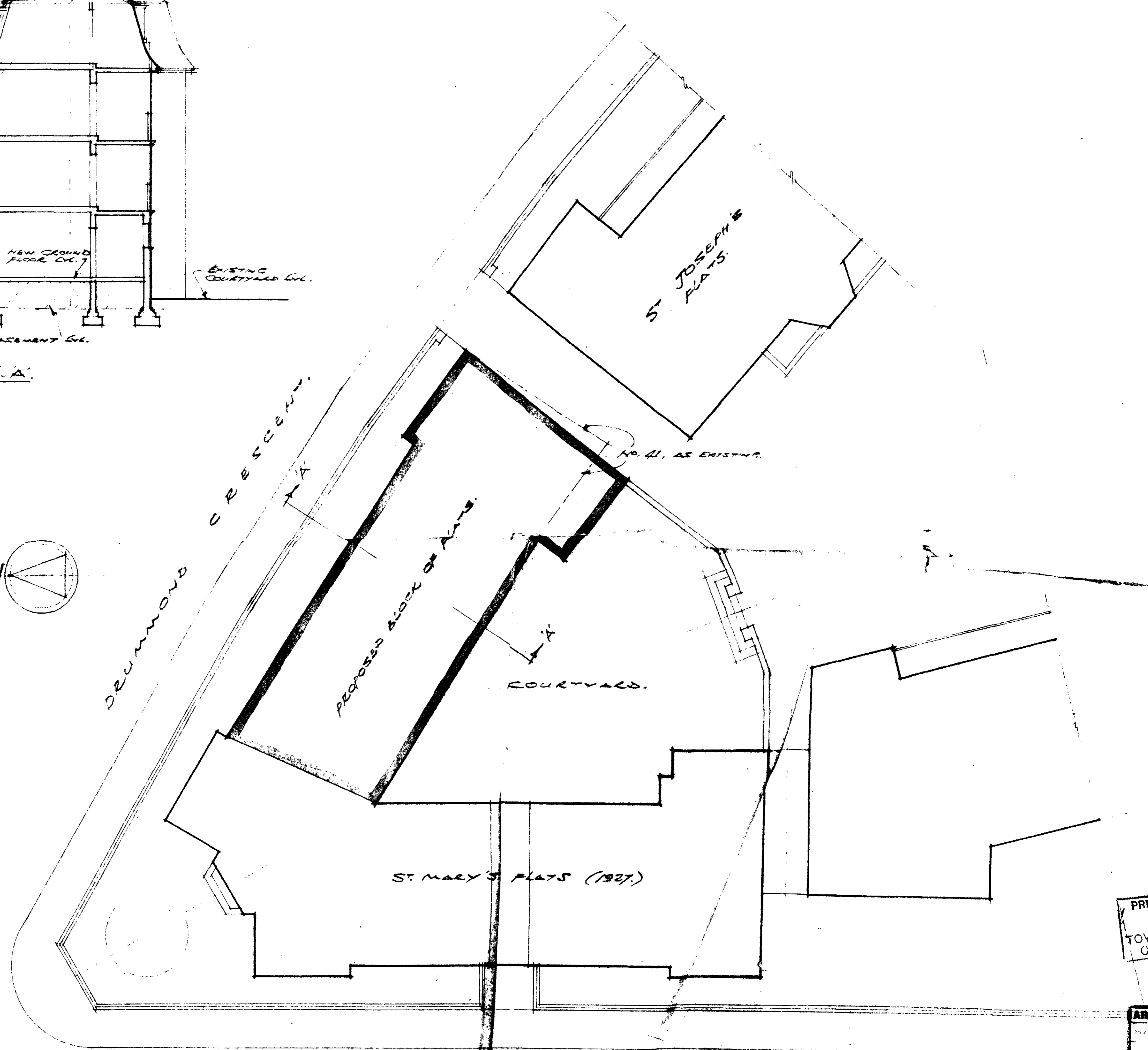
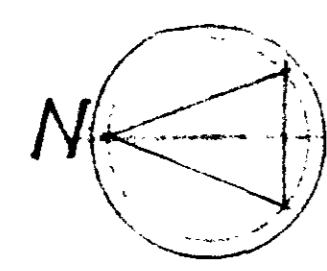
SCALE, 1/8" TO ONE FOOT

IAN HAMILTON AND ALAN CHAMBERS R.F.R.I.B.A.,
15 OLD BRIDGES,
LINCOLN INN, N.C.2.

FEBRUARY 1958.



SECTION A.A.



GRACE STREET. (LATE 'LITTLE DRUMMOND STREET')

PRESENTED TO
12 JUN 1958
TOWN PLANNING
COMMITTEE

ARCHT
22515
17 MAR 1958

1

PROPOSED RECONSTRUCTION OF NOS. 38-41
DRUMMOND CRESCENT, ST. PAULS.

SCALE: 1/8" TO ONE FOOT

IAN HAMILTON AND ALAN CHAMBERS F.R.I.B.A.,
16 OLD BUILDINGS,
LINCOLN IN., W.C.2.

JANUARY 1958.