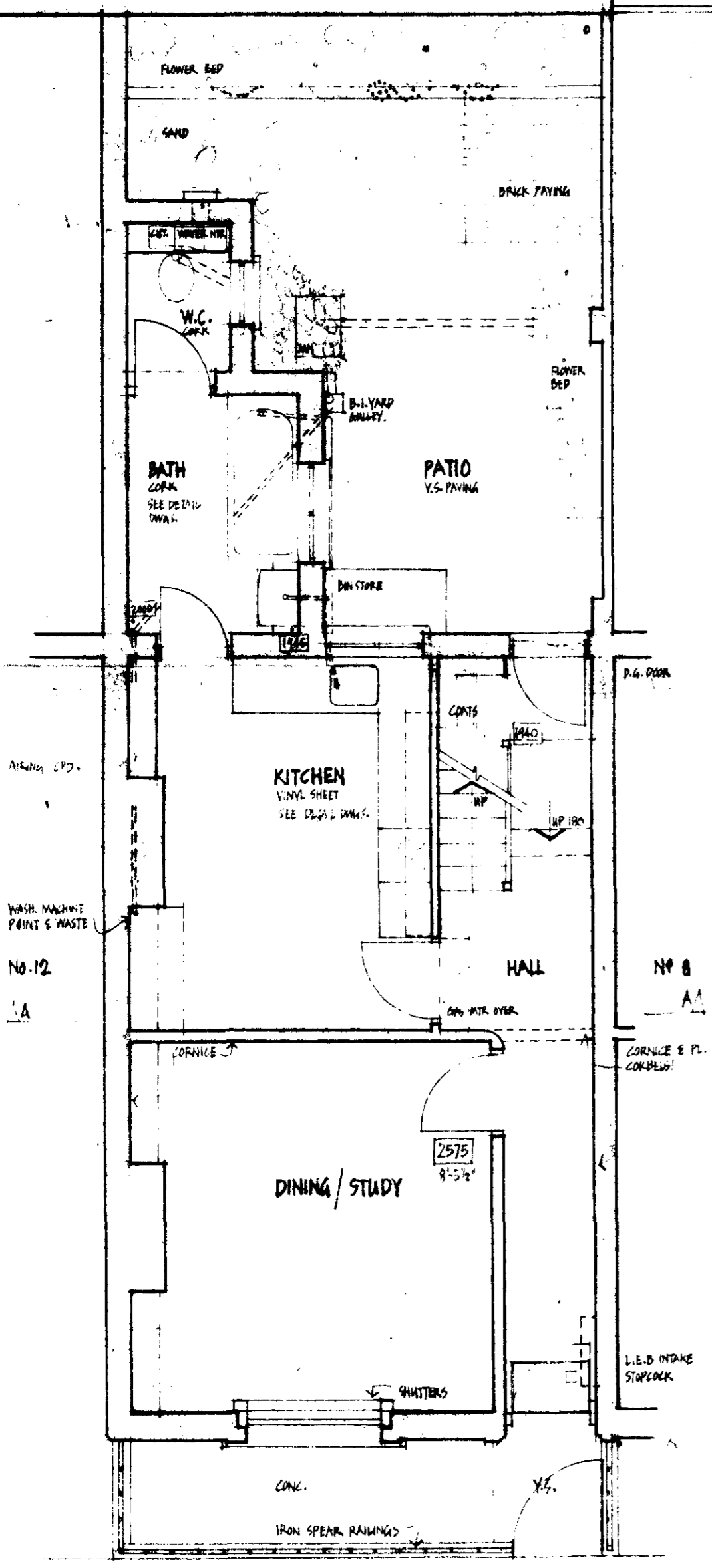
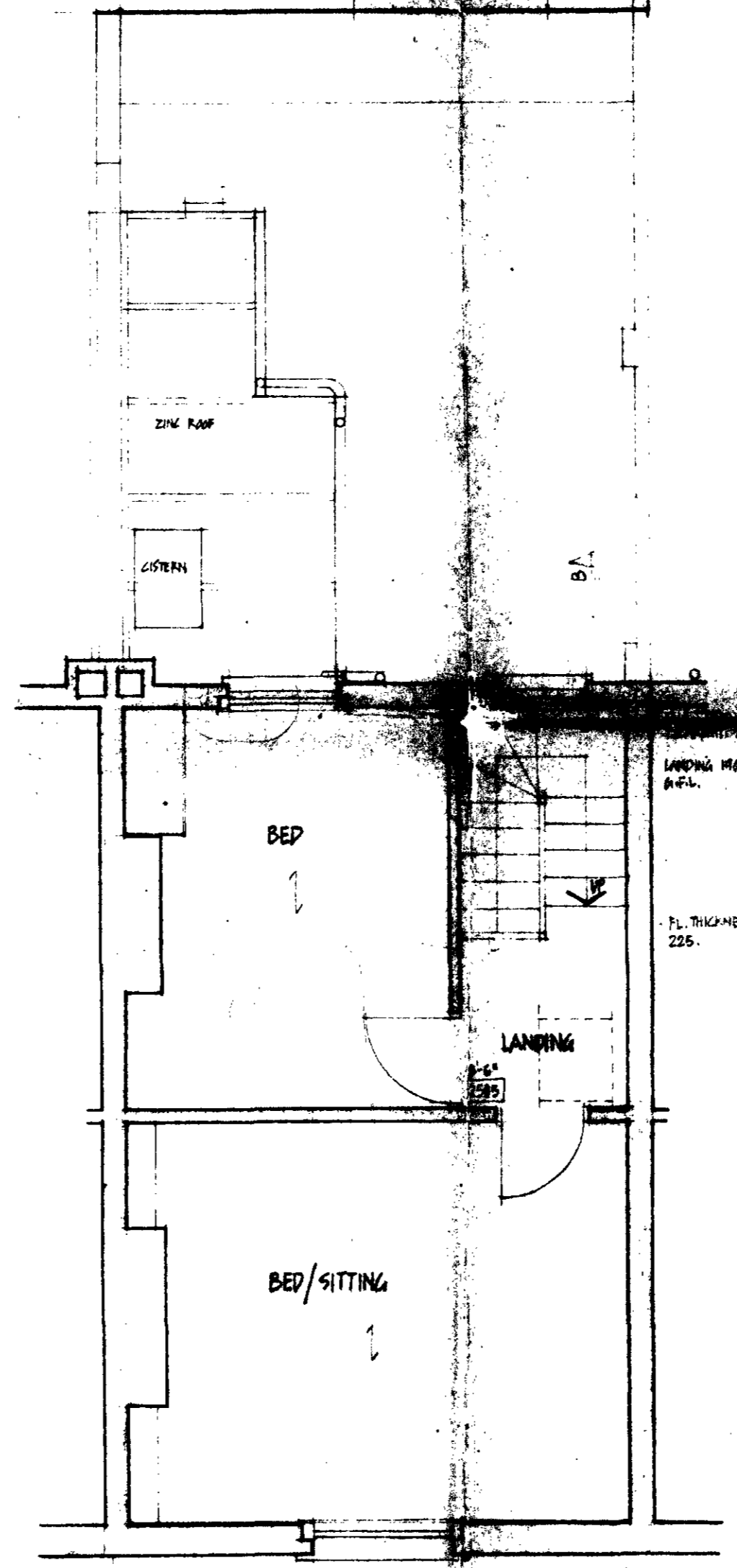


22350 & HB 1364
(1)



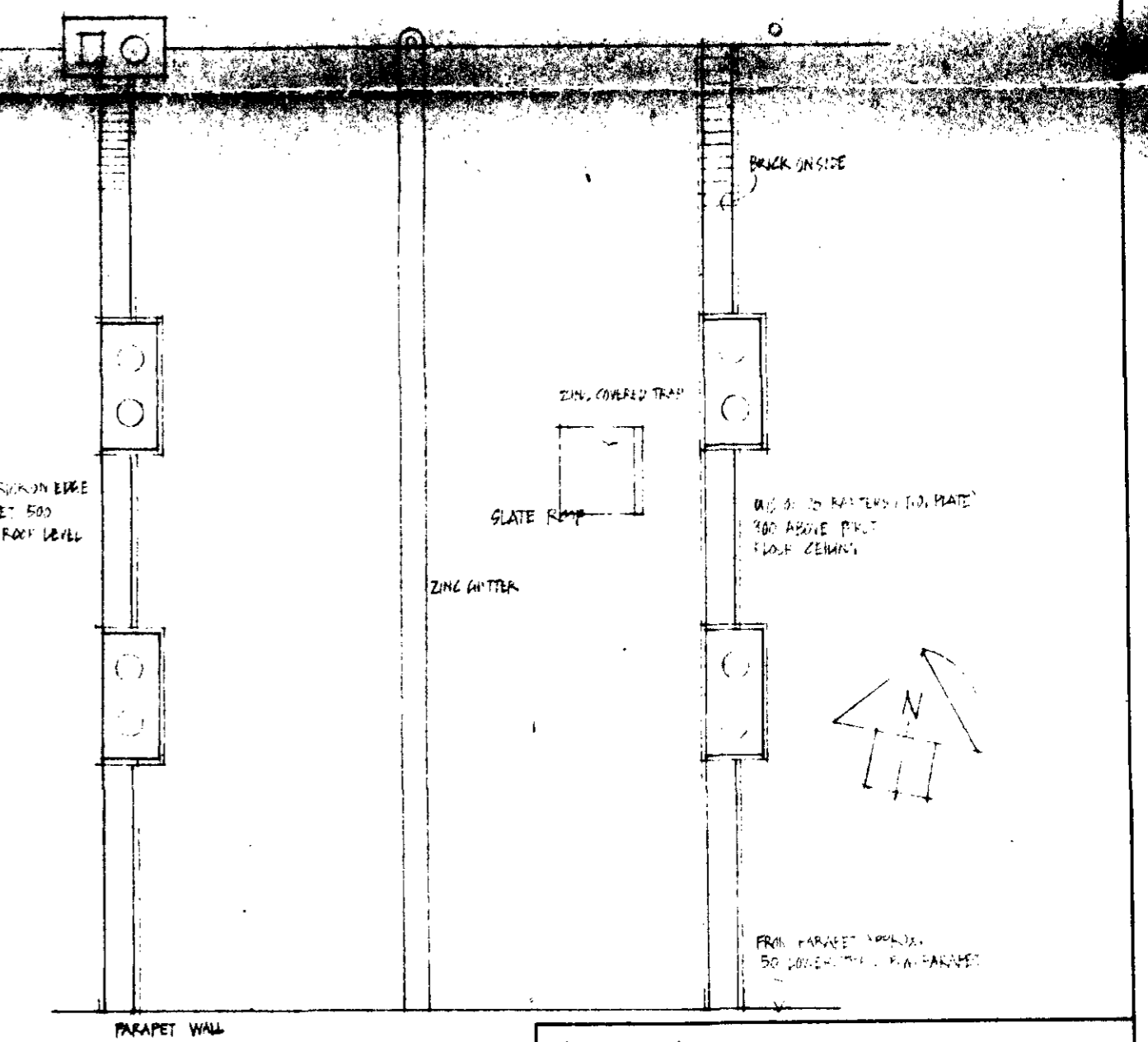
GROUND



FIRST

LONDON BOROUGH OF CAMDEN
TOWN AND COUNTRY PLANNING ACTS
24 JUN 1976
APPROVED
PLANS NOT APPROVED
ON BEHALF OF THE COUNCIL

CASE COPY

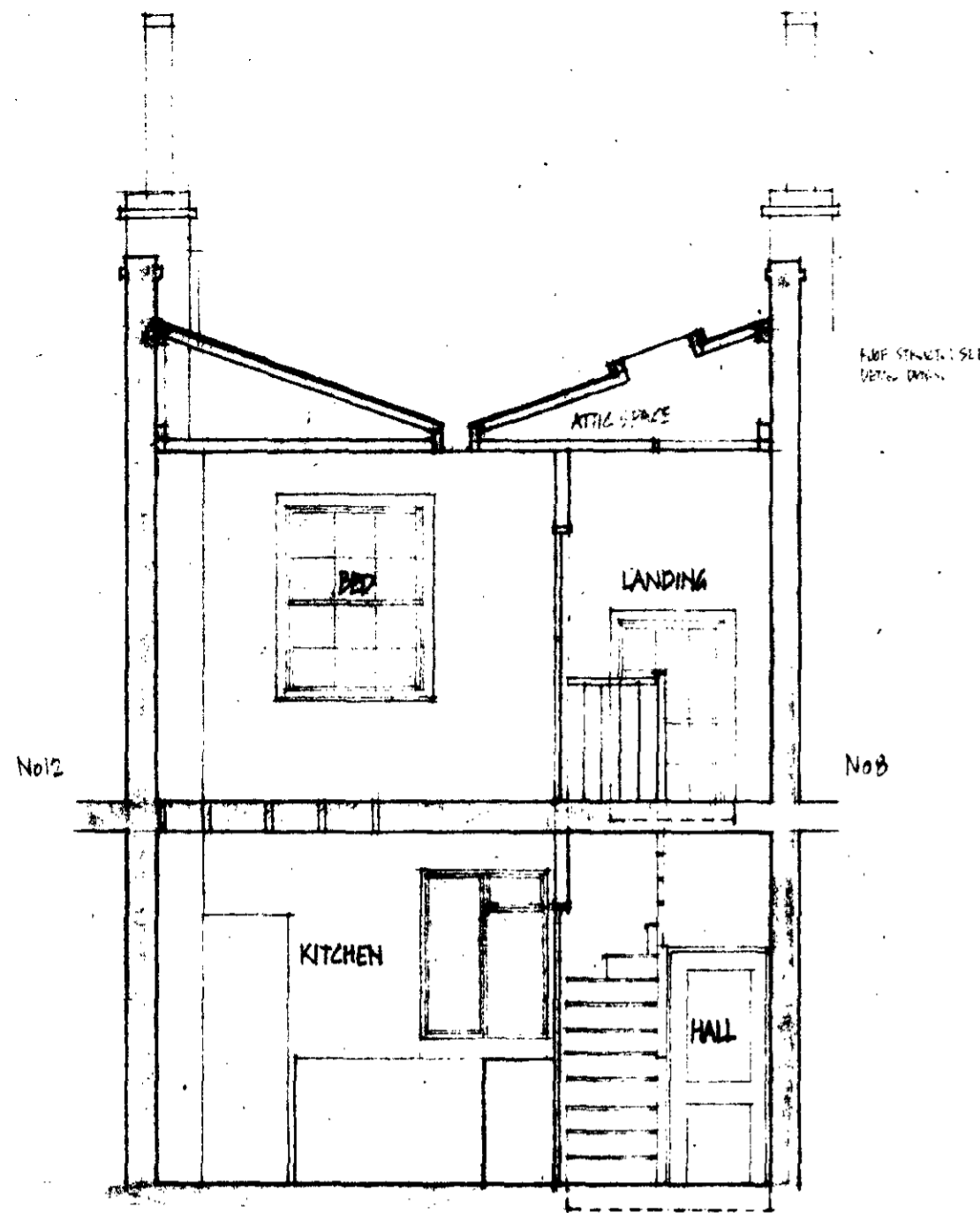


PARAPET WALL

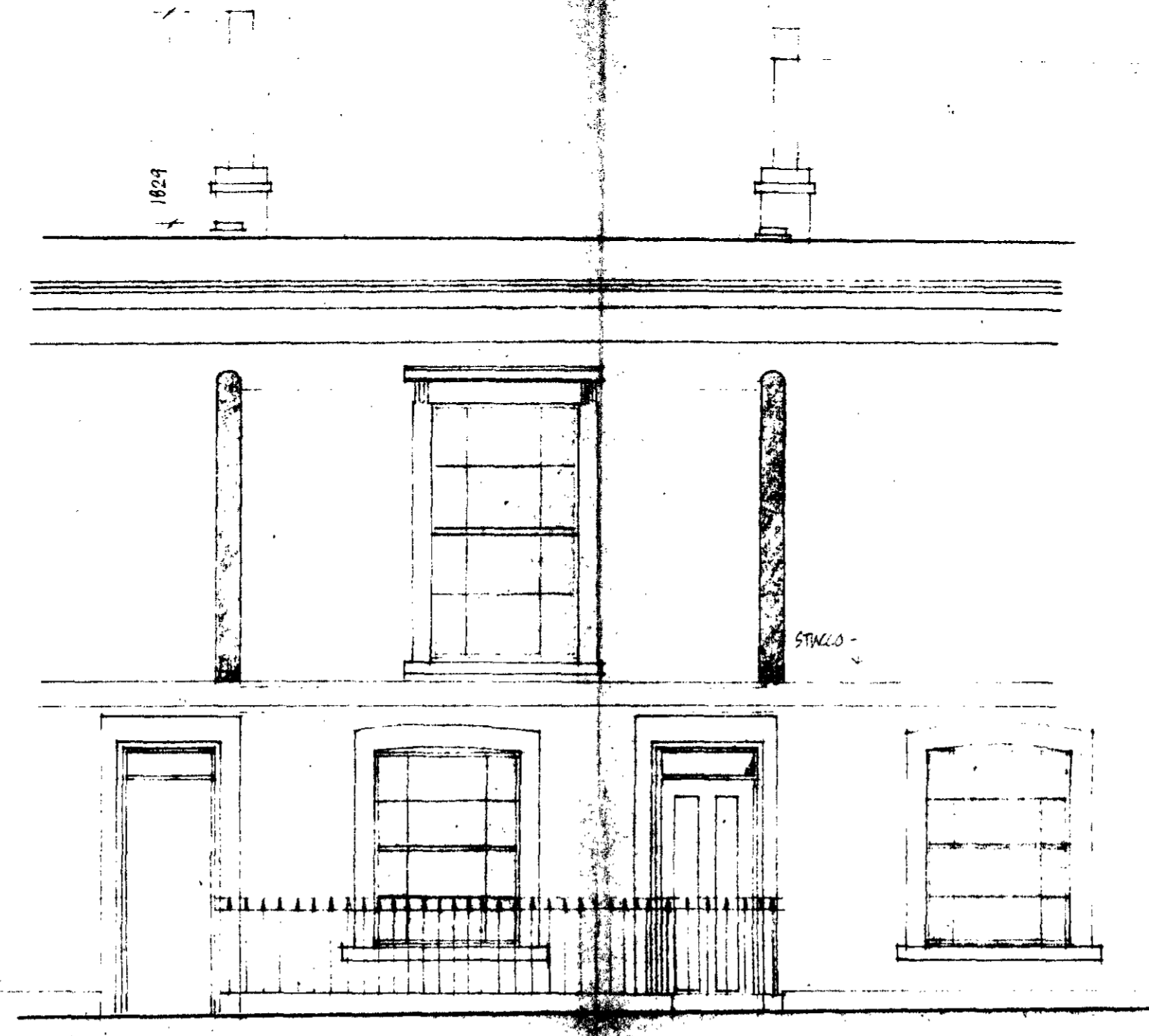
9/11/26/9/HB1364
22350
ROOF

10 KELLY ST., LONDON, N.W.1.		
PLANS AS EXISTING		
1:50	JAN '76	15
A.G. FORDHAM ARCHT	10 Kelly St. London N.W.1	
Chartered Architect	01 423 8251	

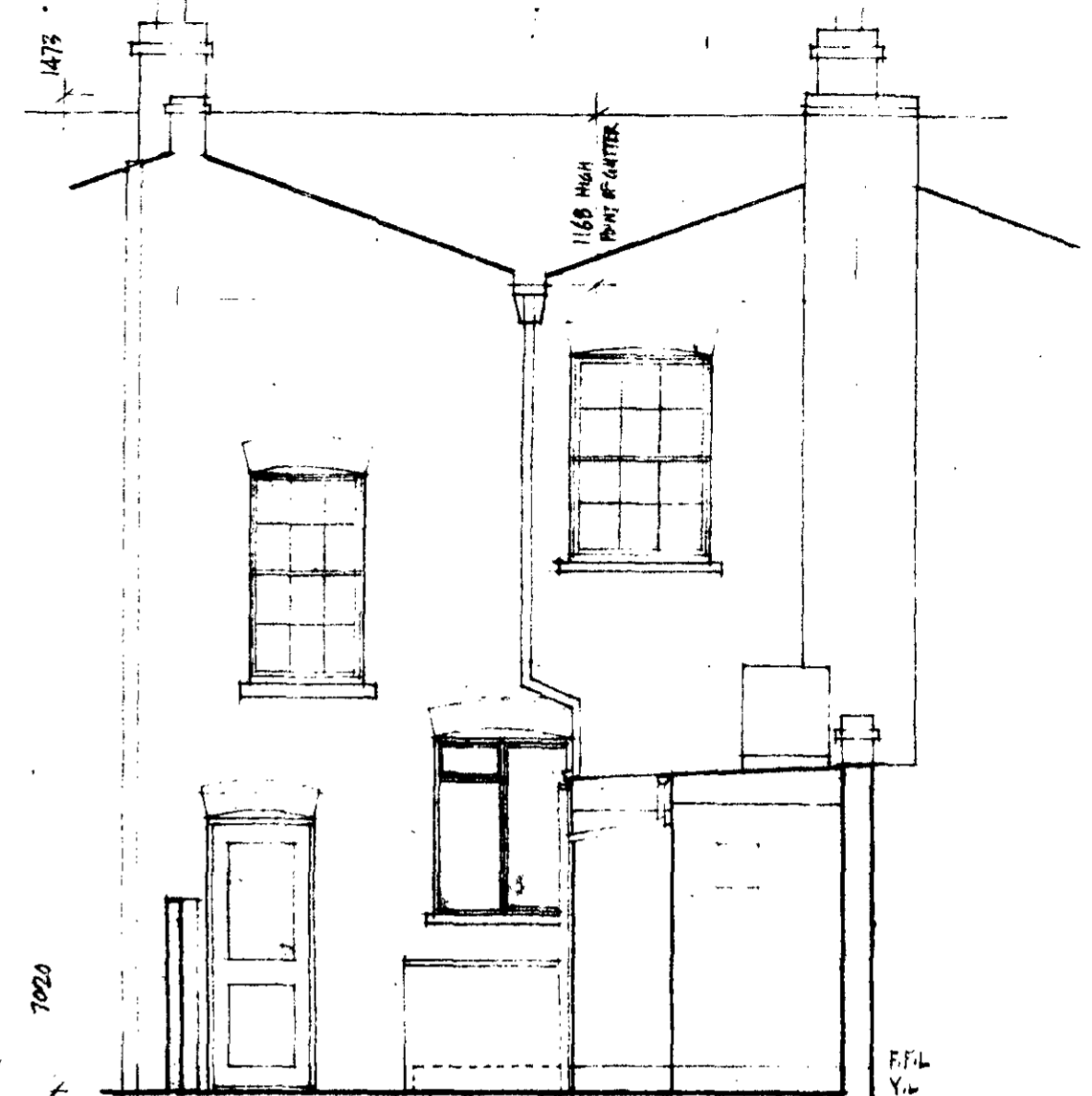
22350+HB1364
(2)



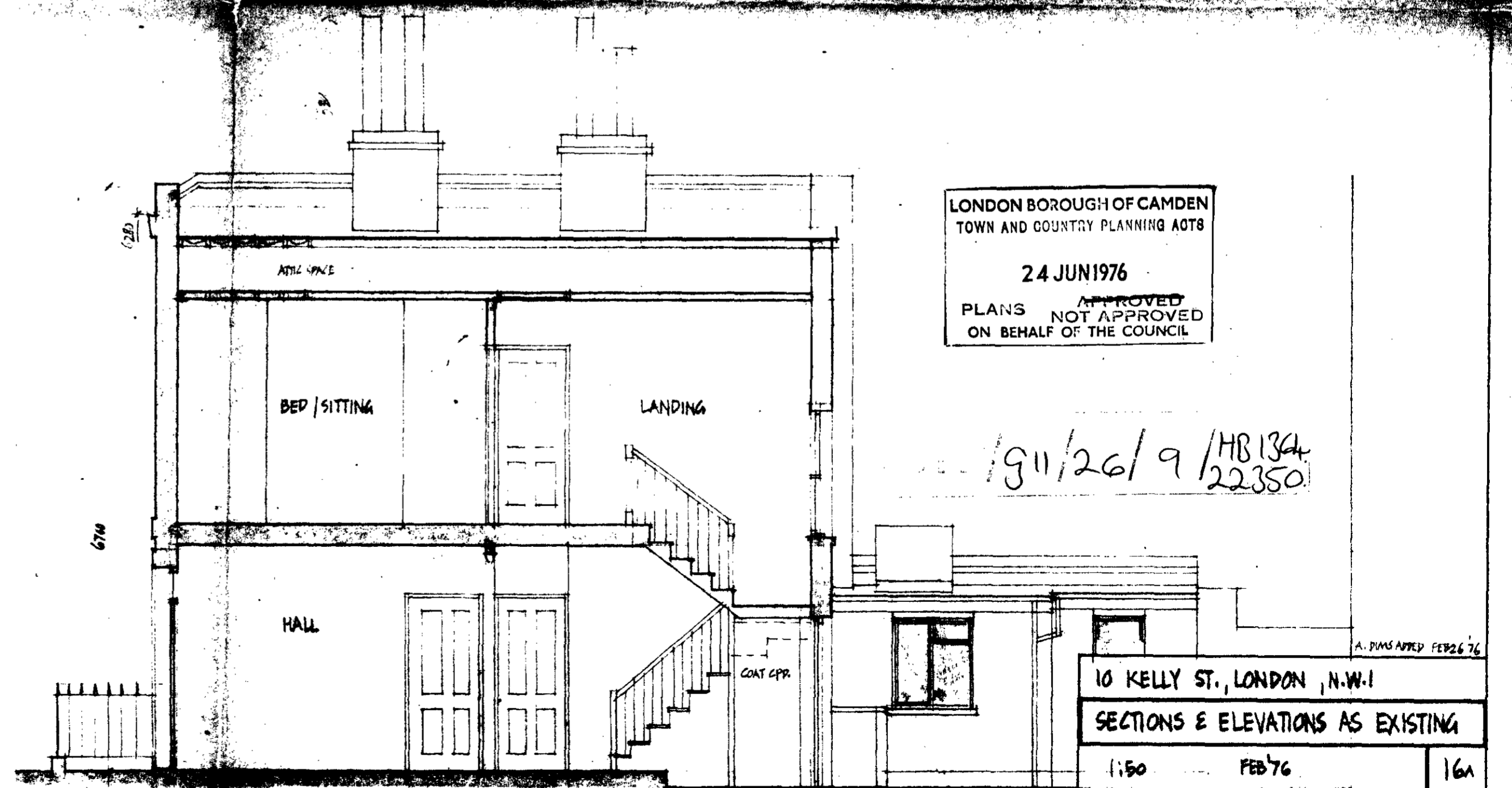
SECTION A-A



STREET ELEVATION



NORTH ELEVATION



SECTION B-B

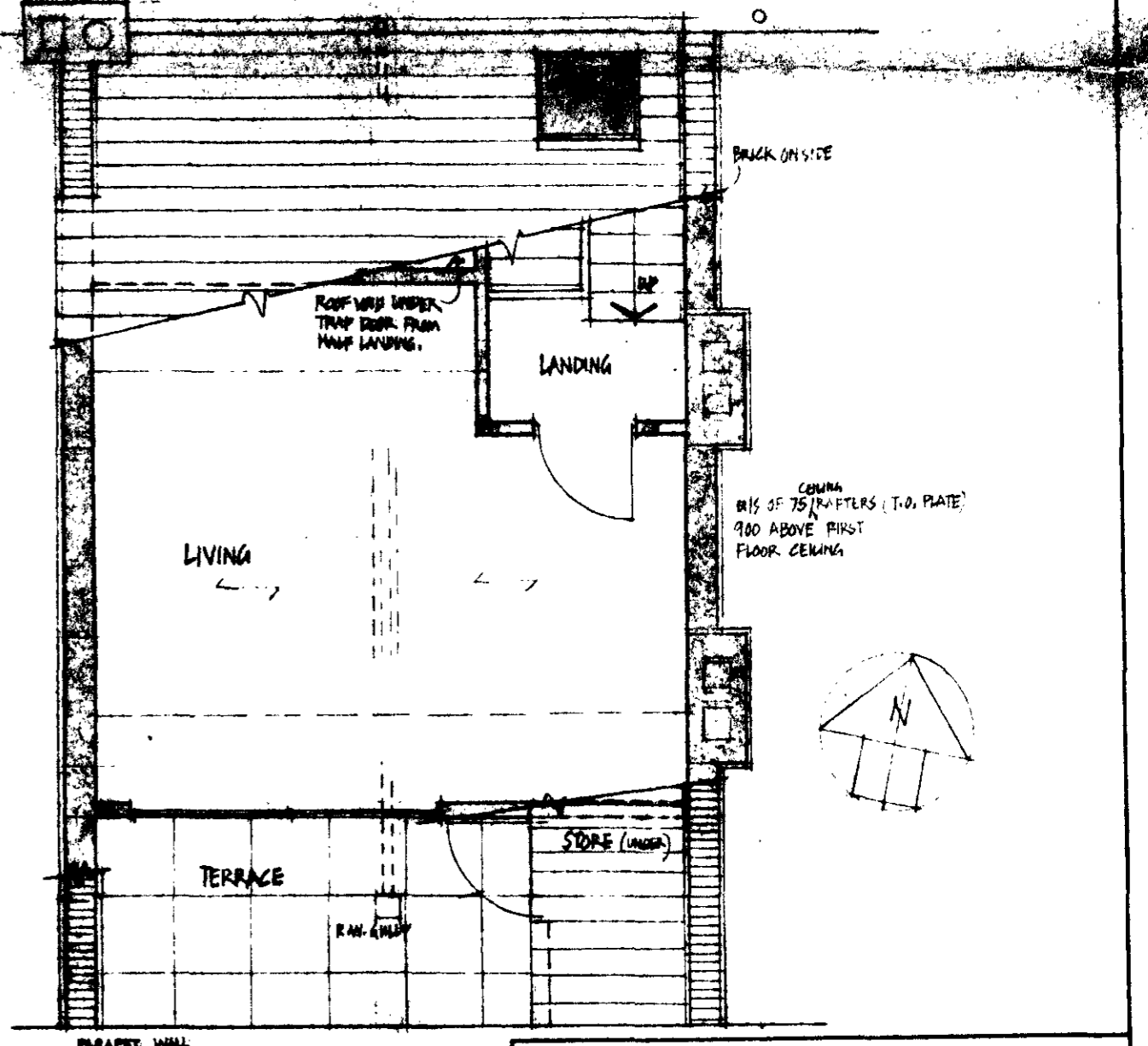
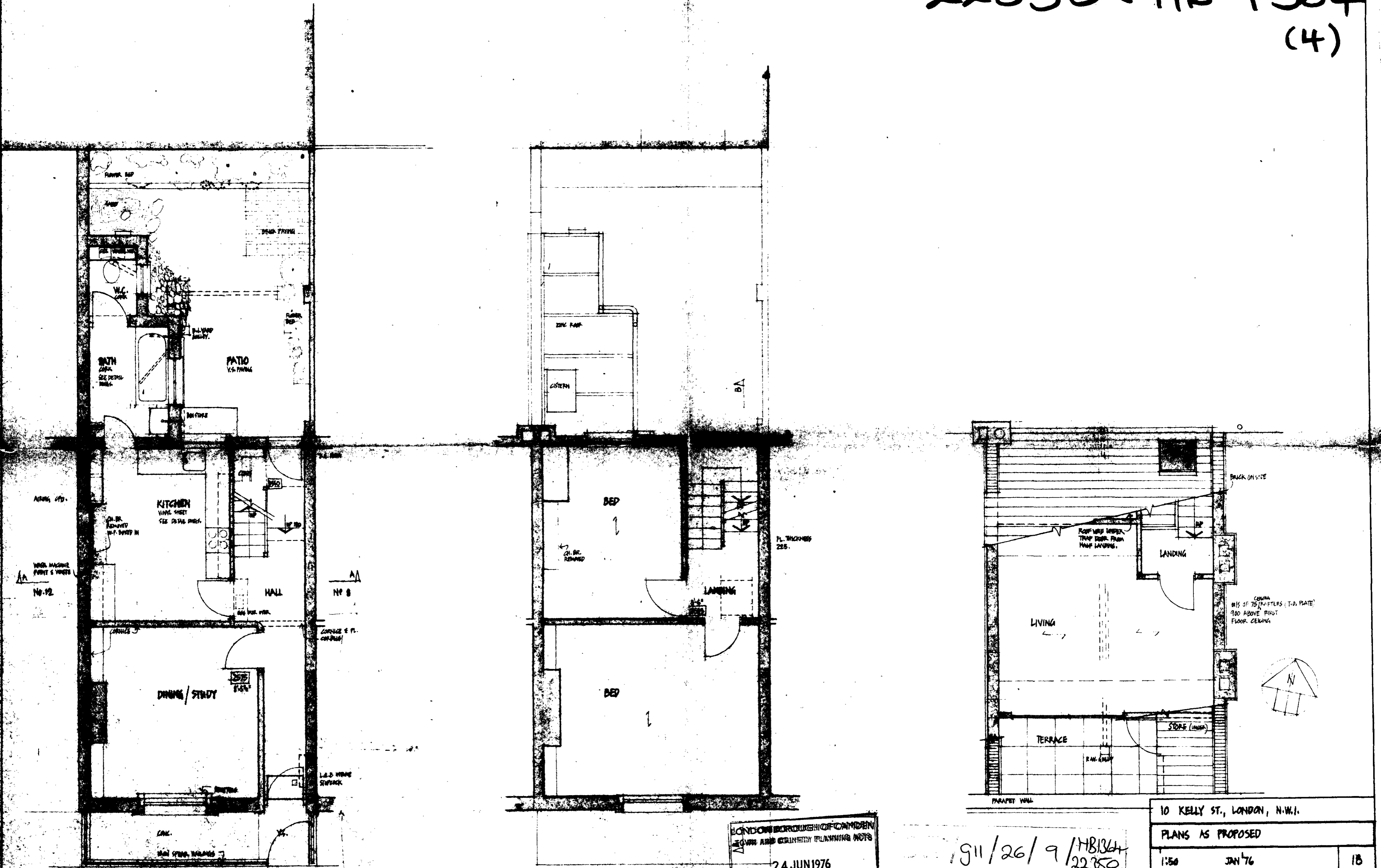
LONDON BOROUGH OF CAMDEN
TOWN AND COUNTRY PLANNING ACTS

24 JUN 1976
APPROVED
PLANS NOT APPROVED
ON BEHALF OF THE COUNCIL

19/11/26/9/1364
22350

A. DIMS APPROV FEB 26 76
10 KELLY ST., LONDON, N.W.1
SECTIONS & ELEVATIONS AS EXISTING
1:50 FEB 76 16A
A. G. FORMAN ARIBA 10 Kelly Street
London N.W.1
Chartered Architect 01-485 8259

22350 + HB 1364
(4)



LONDON BOROUGH OF CAMDEN
LEADS AND CEMENTITY PLANNING NOTES
24 JUN 1976
PLANS APPROVED
NOT APPROVED
ON BEHALF OF THE COUNCIL

9/11/26/9/HB1364
22350
ROOF

10 KELLY ST., LONDON, N.W.1.		
PLANS AS PROPOSED		
1:50	JAN 76	18
A G FORMAN ARCHT	10 Kelly Street London N.W.1	
Chartered Architect	01-485-8238	