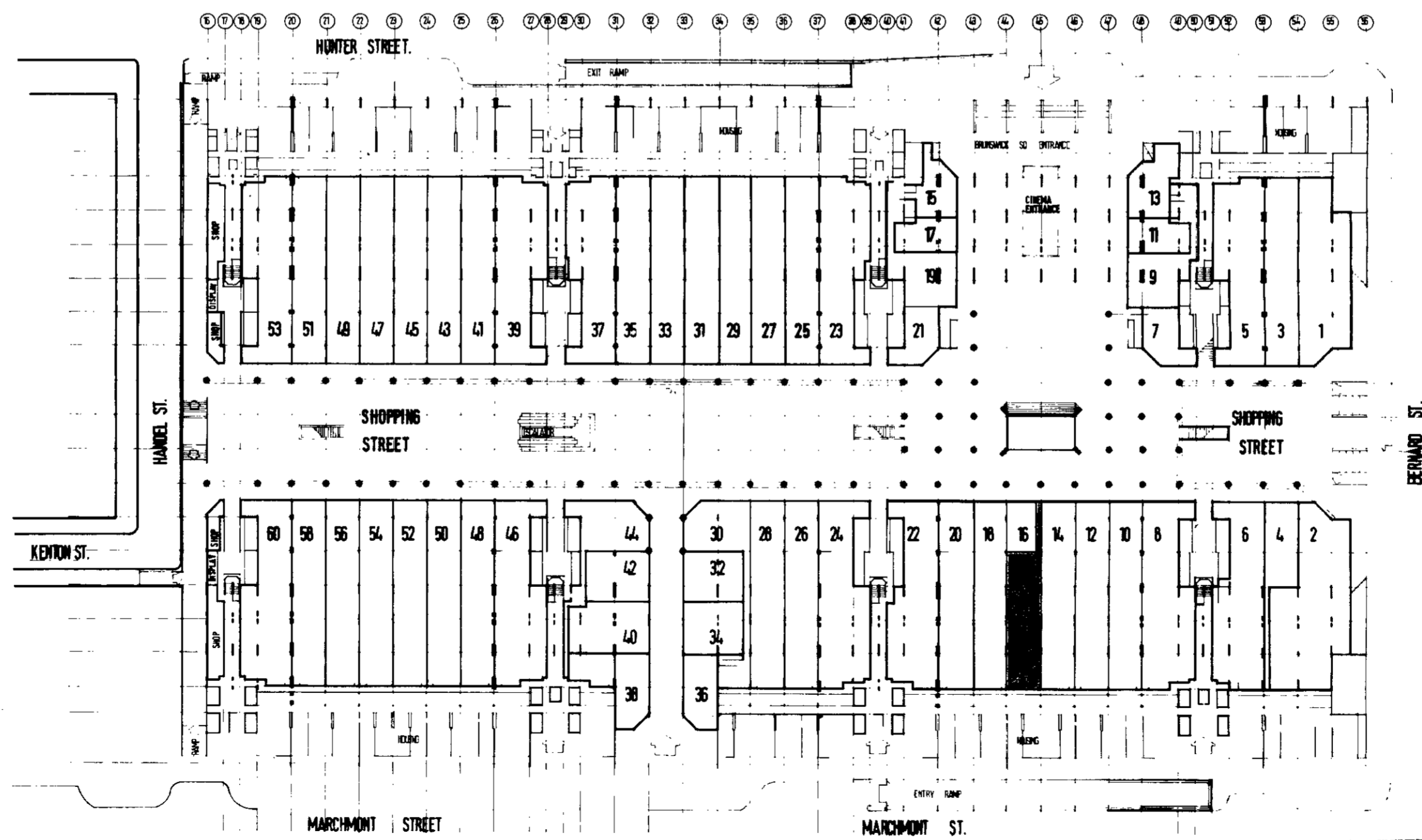


U
T
S
R
Q
P
N
M
L
K
J
I
H
G
F
E
D
C
B
A

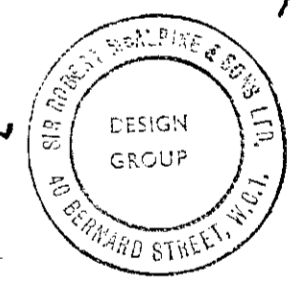
1st floor level.



V
U
T
S
R
Q
P
N
M
L
K
J
I
H
G
F
E
D
C
B
A

street level.

R. J. ...
26 May 72



MCA / AR / FEA 2773

MARCHMONT PROPERTIES LTD
FOUNDLING ESTATE

**SHOPS
STREET LEVEL .
1ST FLOOR LEVEL.**

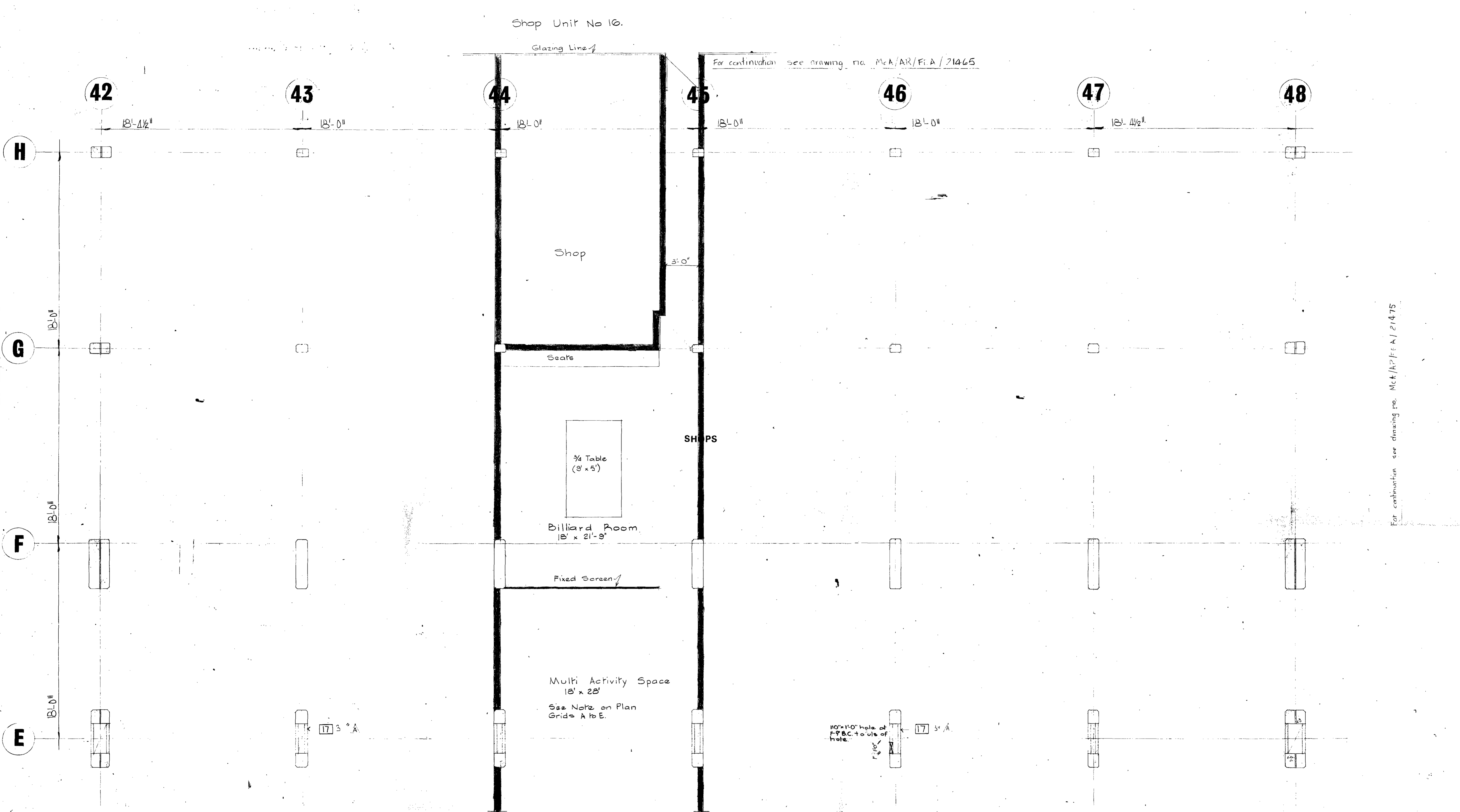
M'ALPINE DESIGN GROUP

SIR ROBERT M'ALPINE & SONS LTD

CTP/M14/17X/A 13740

THIS DRAWING IS THE PROPERTY OF
SIR ROBERT M'ALPINE & SONS LTD
NO REPRODUCTION MAY BE MADE
IN WHOLE OR IN PART WITHOUT PERMISSION

For continuation see drawing no. McA/AR/FEA/21473



For continuation see drawing no. McA/AR/FEA/21465

For continuation see drawing no. McA/AR/FEA/21465

- ITEMS TO REFER TO ARCHITECTS SCHEDULES & DETAILS
- D. Doors and Frames
 - FS. Fire Shutters
 - W. Windows and wintergarden
 - G. Grilles (contractors only)
 - C. Cupboard
 - C.1. Heater cupboard
 - C.2. Cylinder cupboard
 - C.3. Wardrobe cupboard
 - M. Meter cupboard
 - KF. Kitchen fitting and worktop
- MATERIAL & FINISHES
- FLOOR
1. T.P. tiles on screed
 2. T.P. tiles on chipboard
 3. 2" Polystyrene insulation under screed
 4. 1 1/2" Polystyrene insulation under screed
 5. 3" plastic skirting
 6. Asphalt on fibre glass board and screed
 7. Granolithic
 8. Cement sand screed
 9. Paving slabs on mortar bed
 10. Paving slabs on sand bed
 11. Grano skirting
 12. Concrete skirting fillet
 13. Grano treads and risers
 14. Paving slab tread and concrete riser
 15. Additional thickness of screed
- WALL
16. Thermalite block
 17. Thermalite block
 18. 2" Polystyrene insulation
 19. 2" external render
 20. 3" external render
 21. Render and set in 'Carlite' plaster
 22. W.G.T. splash back
 23. Black quarry tile
- D.P.C.
24. Bituminous felt
 25. 2 coats R.I.W. to walls, 370 floors
 26. 1/2" D.P.M.
- WINDOW OPENINGS
27. White glazed tile cill
 28. Painted softwood board
 29. Standard pressed metal cill
 30. Pressed metal gutter
 31. Plate mullion
- WALL OPENINGS
32. Air brick set in R.C. opening
 33. C.I. air brick set in rendered wall
 34. Access panel
- CEILING
35. Render and set in 'Carlite' on concrete
 36. Plaster lath and skim
 37. E.M.L. render and set
 38. Suspended ceiling to detail
- CURTAIN TRACK
39. Curtain track on ceiling batten
 40. Batten only to wall or ceiling over
- REFUSE CHUTE
41. Refuse chute and hopper
 42. Refuse chute
- GUTTER
43. Channel with C.I. grating
 44. Paving slabs gutter on mortar bed

For continuation see drawing no. McA/AR/FEA/21475

LONDON BOROUGH OF CAMDEN
 PLANS
 18 JUL 1972
 ON BEHALF OF THE COUNCIL

CTP/mw/17/A 10740
 4 19 72

15.069 GLE Blockwork to columns increased to 2" A
 13/62 SERVICE HOLES ABOVE SERVICE AREA

Architect:
 PATRICK HODGKINSON, AA DIPL ARIBA,
 32 PORCHESTER TERRACE LONDON W2,
 Telephone 01.282.3460.

MCA/AR/FEA/21268

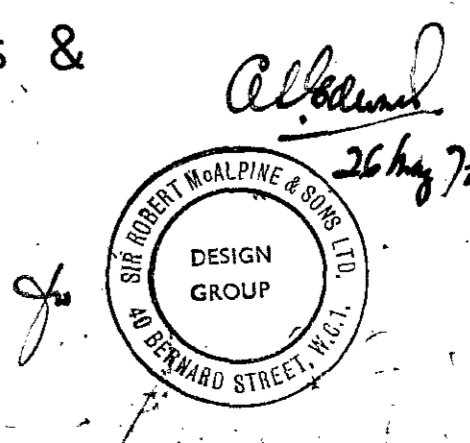
Contract FOUNDLING ESTATE SITE 'A'

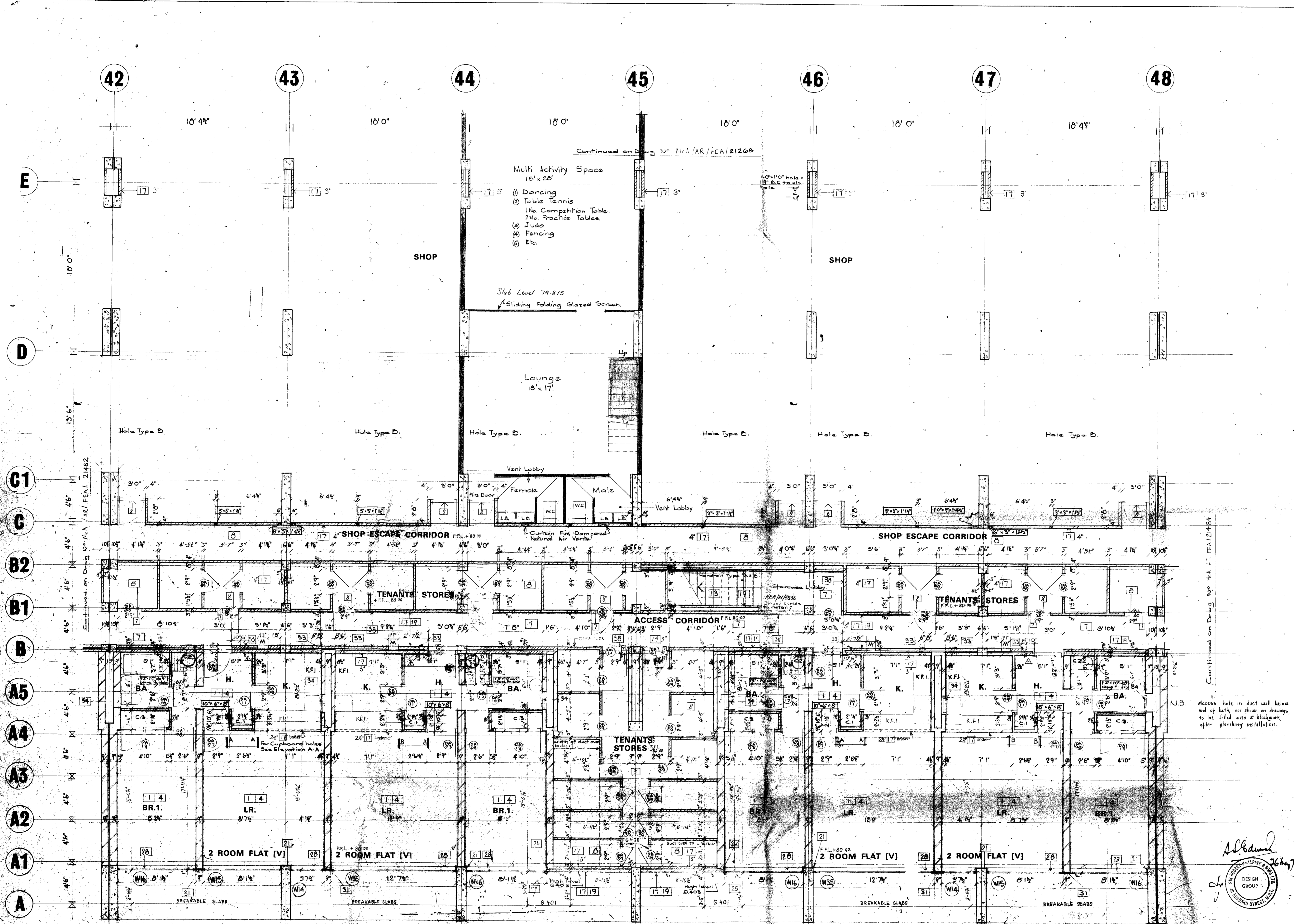
Drawing PLAN - LEVEL 'A'
 GRID LINES 42+48 & E+1
 4/23

Scale 1/4" = 1'-0" Date 10 April 1972
 Drawn R.E. Checked

MC ALPINE DESIGN GROUP
 GLOUCESTER HOUSE, 149, OLD PARK LANE, LONDON, W1
 Telephone 01.493.8466.
 SIR ROBERT MC ALPINE & SONS LTD.

Proposed McAlpine Sports & Social Centre. Sheet 1.





- ITEMS TO REFER TO ARCHITECT'S SCHEDULES & DETAILS
- D. Doors and Frames
 - FS. Fire Shutters
 - W. Windows and wintergarden
 - G. Grilles (contractors only)
 - C. Cupboard
 - C.1. Heater cupboard
 - C.2. Cylinder cupboard
 - C.3. Wardrobe cupboard
 - M. Meter cupboard
 - KF. Kitchen fitting and worktop
- MATERIAL & FINISHES
- FLOOR
1. T.P. tiles on screed
 2. T.P. tiles on chipboard
 3. 3" Polystyrene insulation under screed
 4. 1 1/2" Polystyrene insulation under screed
 5. 3" plastic skirting
 6. Asphalt on fibre glass board and screed
 7. Granolithic
 8. Cement sand screed
 9. Paving slabs on mortar bed
 10. Paving slabs on sand bed
 11. Grano skirting
 12. Grano skirting fillet
 13. Grano treads and risers
 14. Paving slab treads and concrete riser
 15. Additional thickness of screed
- WALL
16. Thermalite block
 17. Thermalite block
 18. 2" Polystyrene insulation
 19. 3" external render
 20. 1" external render
 21. Render and set in 'Carlite' plaster
 22. W.G.T. splashback
 23. Black quarry tile
 - D.P.C.
 24. Bituminous felt
 25. 2 coats R.I.W. 3 to floors
 26. Hydraulic B.P.M.
- WINDOW OPENINGS
27. White glazed tile cill
 28. Painted softwood board
 29. Standard pressed metal cill
 30. Pressed metal gutter
 31. Plate mullion
- WALL OPENINGS
32. Fair brick set in R.C. opening
 33. C.I. air brick set in rendered wall
 34. Access panel
- CEILING
35. Render and set in 'Carlite' on concrete
 36. Plaster/lath and skim
 37. E.M.L. render and set
 38. Suspended ceiling to detail
- CURTAIN TRACK
39. Curtain track on ceiling batten
 40. Batten only to wall or ceiling over
- REFUSE CHUTE
41. Refuse chute and hopper
 42. Refuse chute
- GUTTER
43. Channel with G.L. grating
 44. Paving slab gutter on mortar bed

CTP/M/4/17/A 1390

15/04/69	Air Bricks repositioned.	E
18/3/69	SERVICE HOLES APPROVED BUS	F
18/3/69	Blockwork & blockwork walls in access corridor revised. Blockwork revised Gl. S. 42-48	E
12/3/69	Tenants store dimensions finalized as shown.	D
11/3/69	SERVICE HOLES APPROVED HOME CLUB	F
21/1/69	Blockwork revised to service requirements.	C
8/11/68	Air bricks repositioned. Note re plumbing to both added dimensions omitted.	B
1-10-68	Redrawn due to poor state of negative.	A

Architect: MCA/AR/FEA/2126B
 32, PORTLAND TERRACE, LONDON, W.2
 Telephone: 01-252 2666

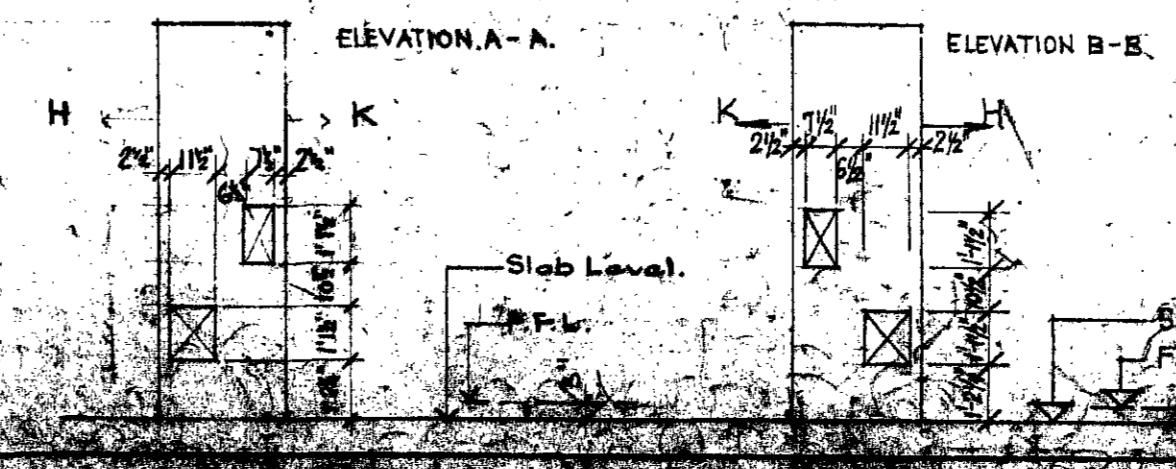
Contract: FOUNDLING ESTATE SITE 'A'

Drawing: PLAN - LEVEL A
 GRID LINES 42-48 & A-E

Scale: 1/4" = 1' 0"
 Date: 1-10-68

Drawn: [Signature]
 Checked: [Signature]

MCA/AR/FEA/2126B
 HEMPSTEAD HOUSE, MARLOWE
 HEMEL HEMPSTEAD, HERTS.
 Telephone: HEMEL HEMPSTEAD



Proposed MCA Sports & Social Centre Sheet 2.

