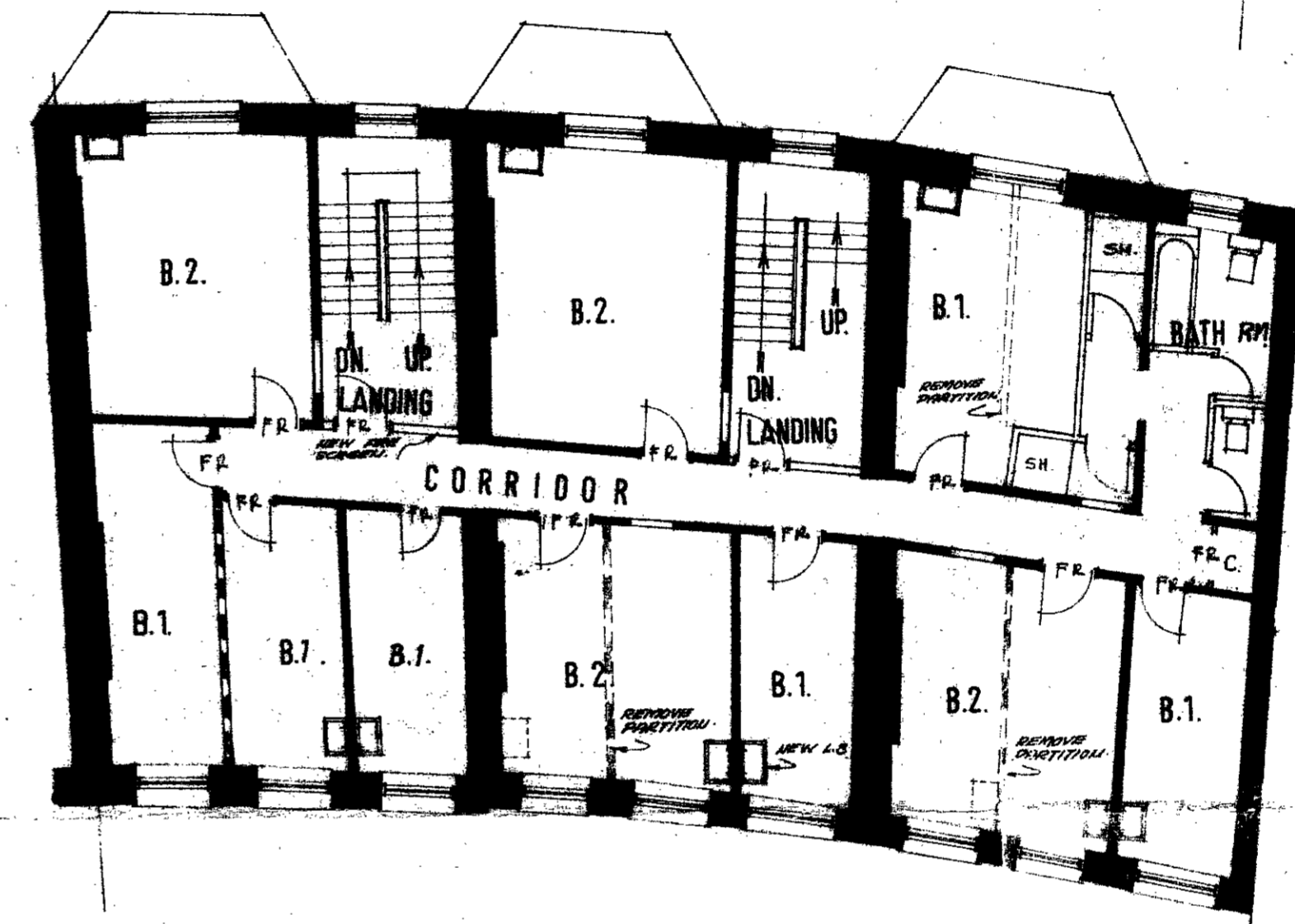
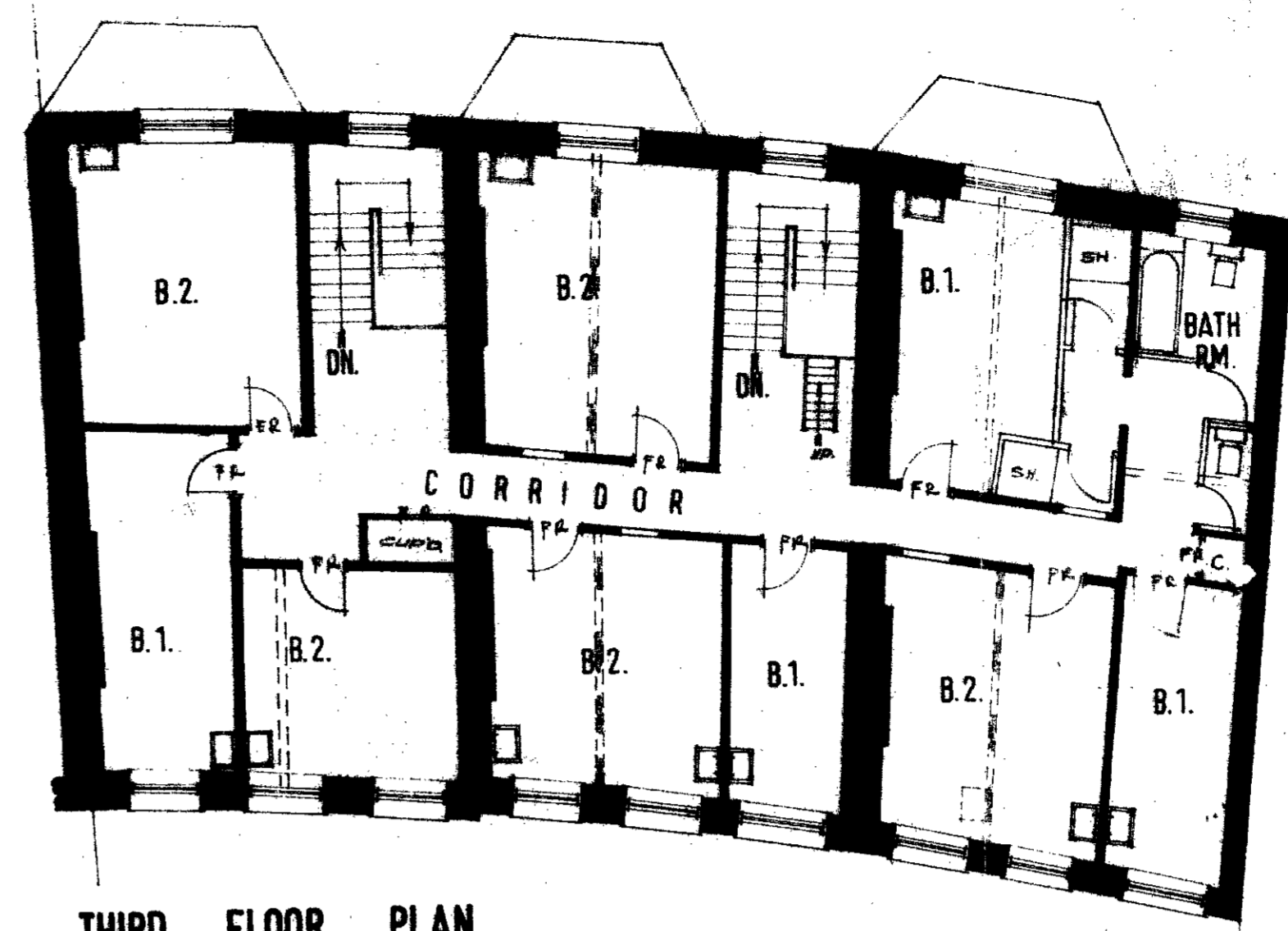
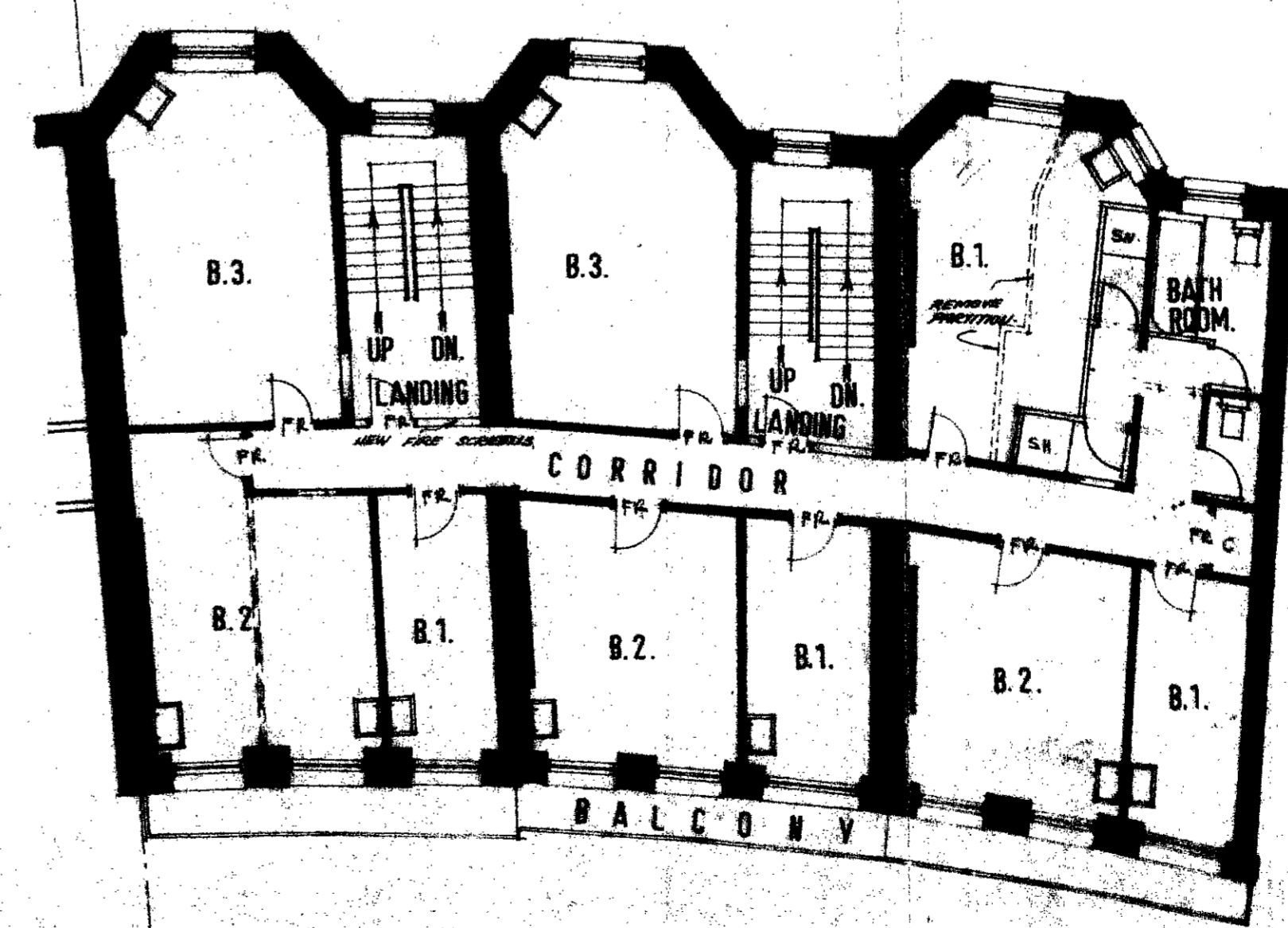
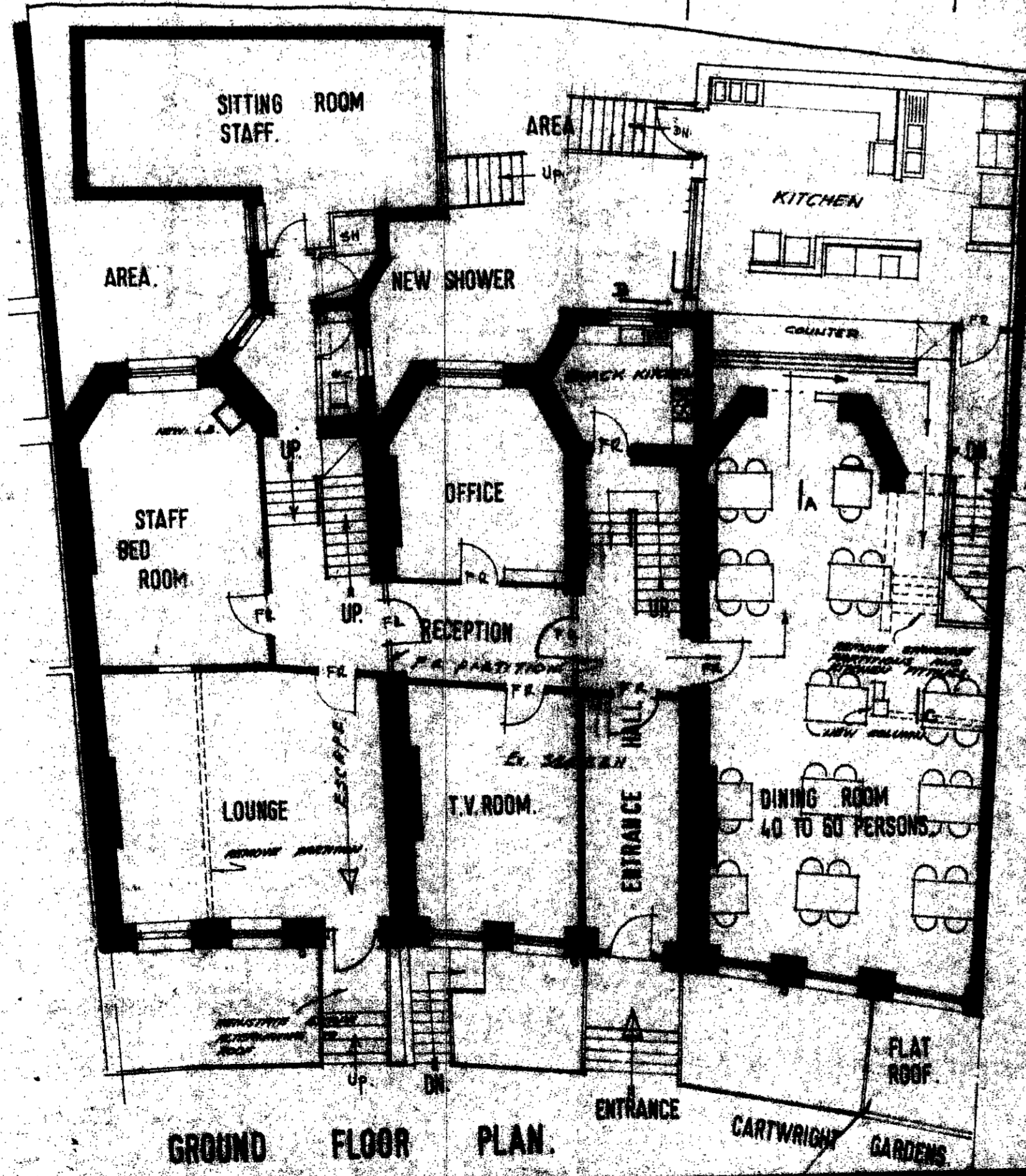


FLOOR.	S	D	T	STAFF	W.C.	BATH	HT.	SHR.
BAS.	-	-	-	3	-	1	-	-
G.F.	-	-	-	2	1	-	2	1
1st F.	4	3	2	-	1	1	-	2
2nd F.	6	4	-	-	1	1	-	2
3rd F.	4	5	-	-	1	1	-	2
TOTAL ROOMS	18	17	2	2	3	4	2	7
TOTAL PERSONS	44	8	-	52				



NOTE:-
 THICKNESS OF WALLS AND FINAL SETTING TO BE CHECKED ON FURTHER SURVEY IN FULL DETAIL FOR STRUCTURE.
 DOORS MARKED F.R. ARE TO BE 1/2 HOUR FIRE RESISTANCE AND SELF CLOSING.



LONDON BOROUGH OF CAMDEN
 PLANS APPROVED
 DISAPPROVED
 -28/11/76
 ON BEHALF OF THE COUNCIL

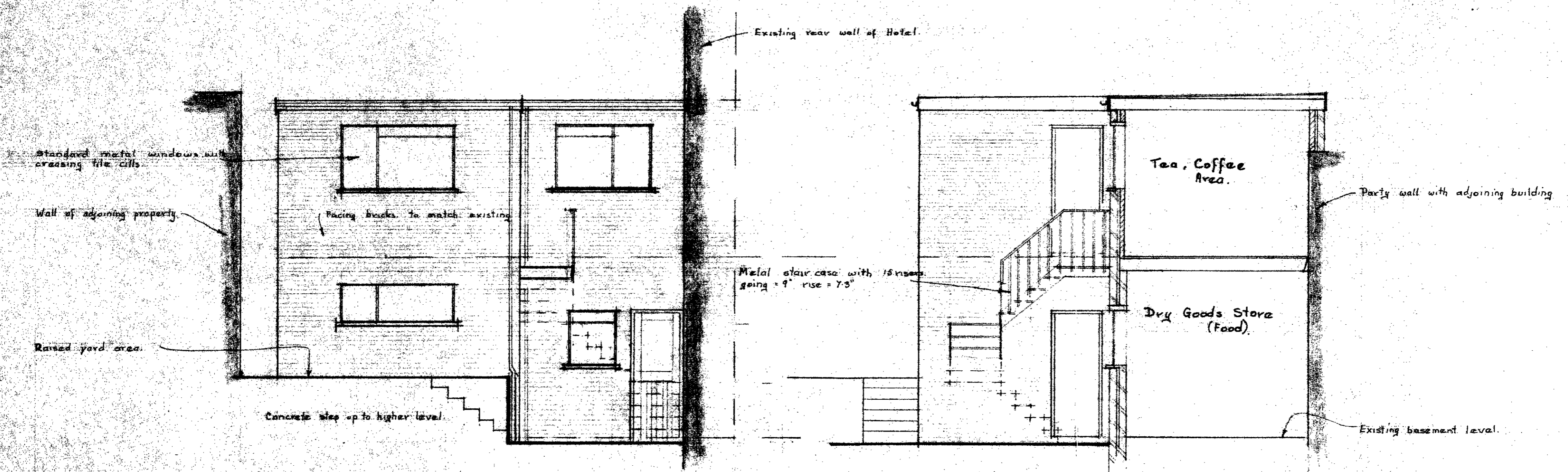
CTP/M14/4/E/9513R

NATIONAL WESTMINSTER BANK LTD
 15, BISHOPSGATE.
 LONDON E.C.2. TEL. 01-588.2700.

LONDON W.C.1.
 CAMBRIA HOTEL, CARTWRIGHT GARDENS,
 SKETCH LAYOUT CONVERSION TO STAFF HOSTEL.

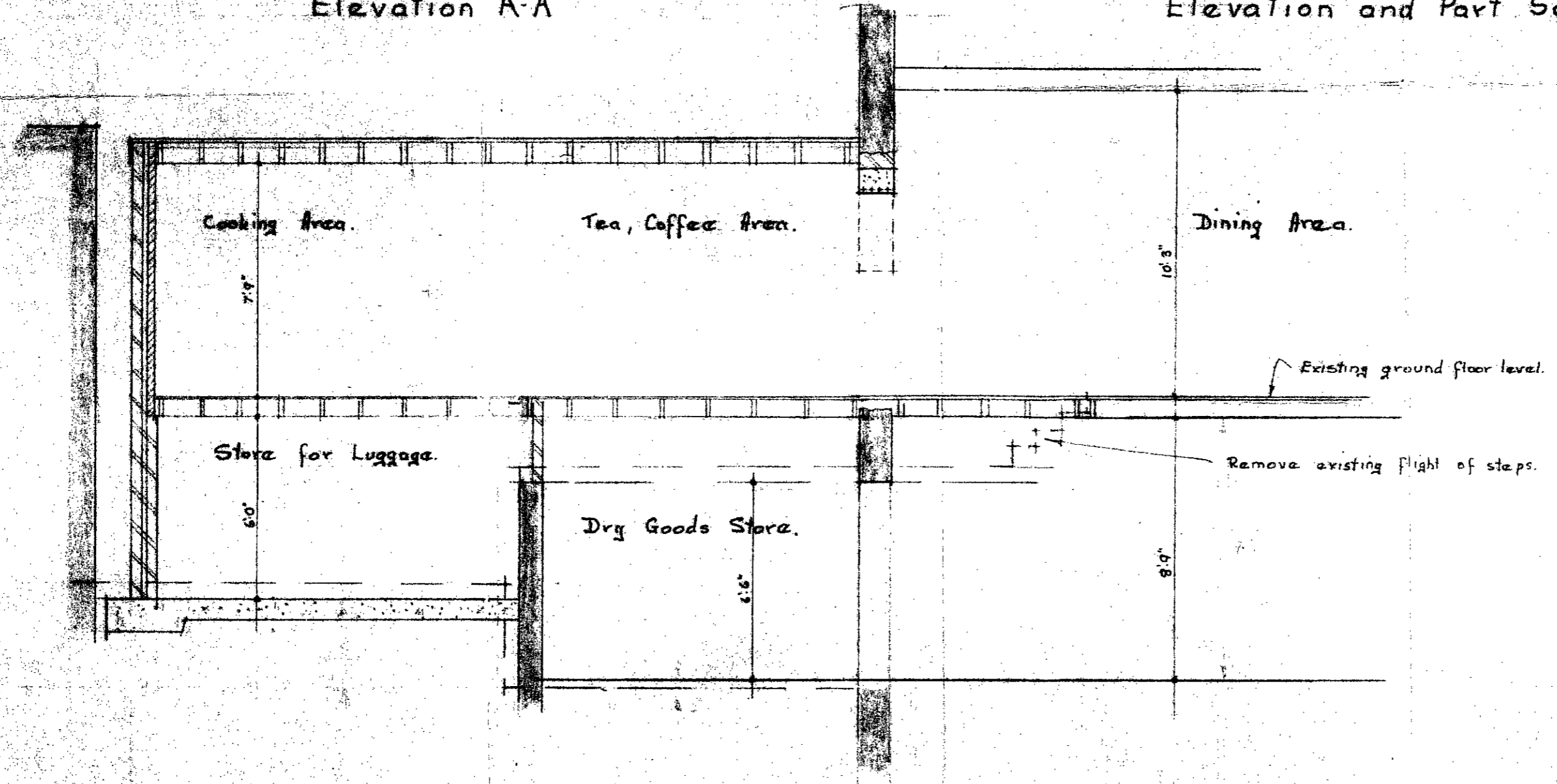
SCHEME A.

DRAWING NO. 22/1364/4	REVISIONS	DATE
SCALE 1/6" = 1'-0"	RAYMOND J. HUSBAND, F.R.I.B.A.	DRAWN
DATE JULY 70	REGISTERED ARCHITECT	APPROVED
	LONDON,	
	TEL. 01-647-8818	



Elevation A-A

Elevation and Part Section B-B



Section C-C

LONDON BOROUGH OF CAMDEN
 PLANS APPROVED
 DISAPPROVED
 1 DEC 1970
 ON BEHALF OF THE COUNCIL

GREATER LONDON COUNCIL
 9529 12AUG70
 ARCHITECT'S REGISTRY

CAMDEN PLANNING
 DEPARTMENT
 19 AUG 1970
 VOL. NO.
 ACK.
 REFERRED TO.

CTP/MHK/W/K/RSB

London Westminster Bank Ltd
 15 Abchurch Lane
 London
 E.C. 4
 01-405-2100

Elevations and Sections of Kitchen Extension
 Bank Staff Hostel
 Cambria Hotel Cartwright Gardens W.C.1

DRAWING NO 11/156/10	REVISIONS	DATE BY
SCALE 1/4" = 1'-0"	RAYMOND J. HUSBAND, R.I.B.A.	DRAWN DTJ
DATE 17.9.70	CHARTERED ARCHITECT WALLINGTON	APPROVED
	LONDON	
	Tel. 01-447-0067	