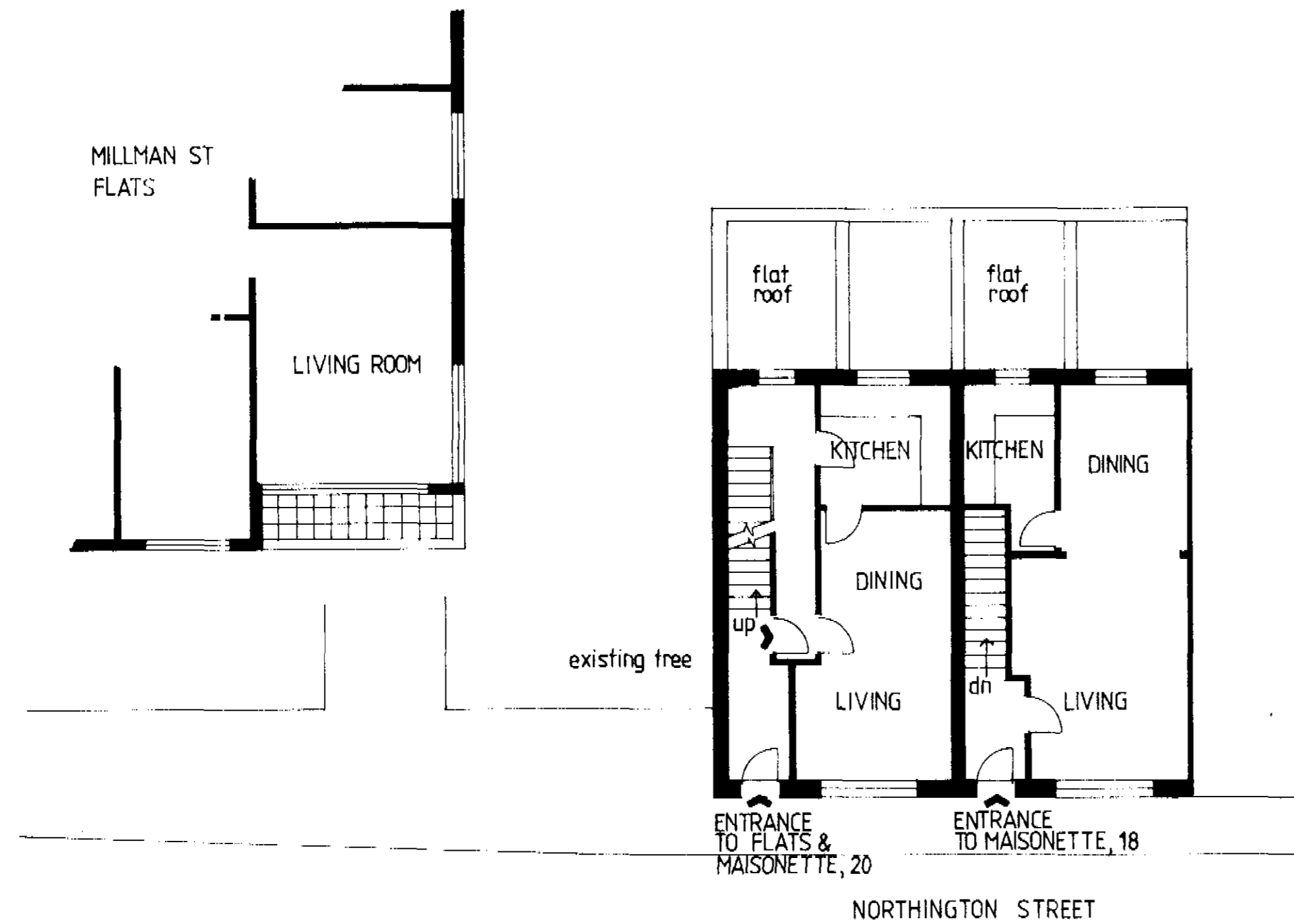
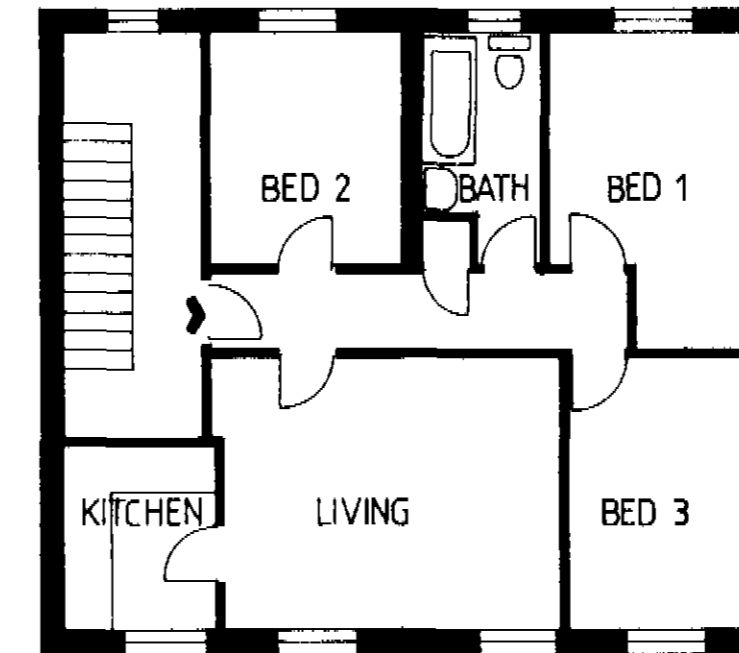


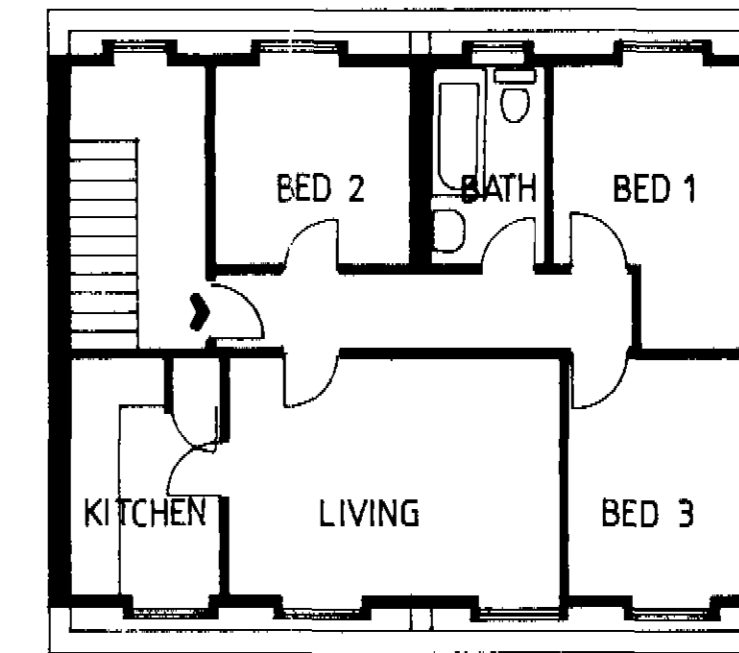
BASEMENT PLAN



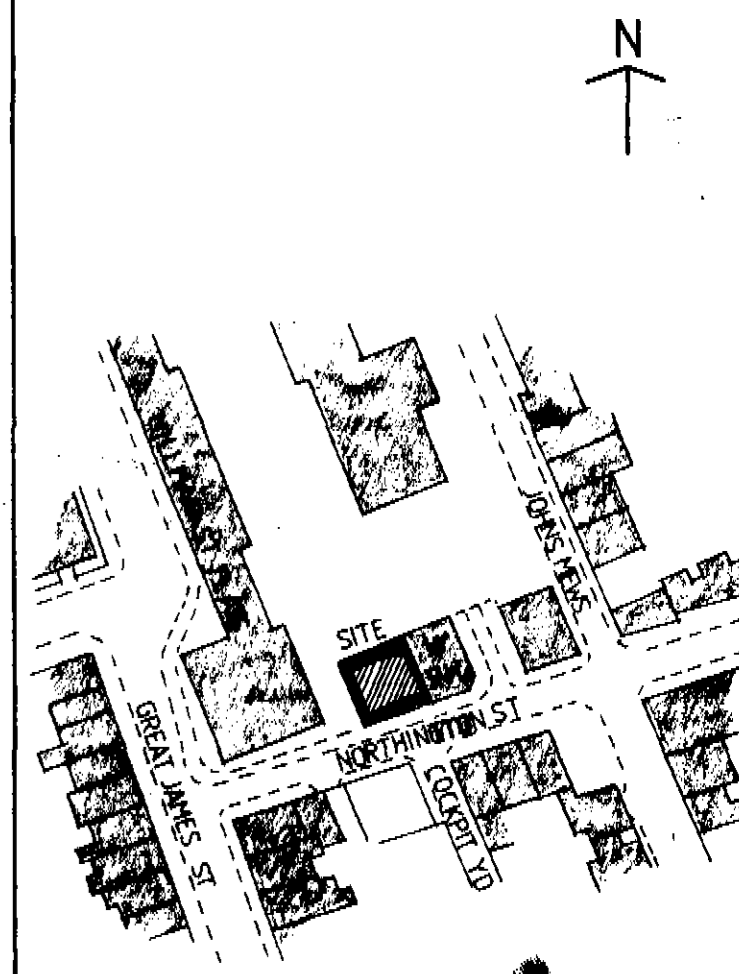
GROUND FLOOR PLAN



FIRST & SECOND FLOOR PLANS



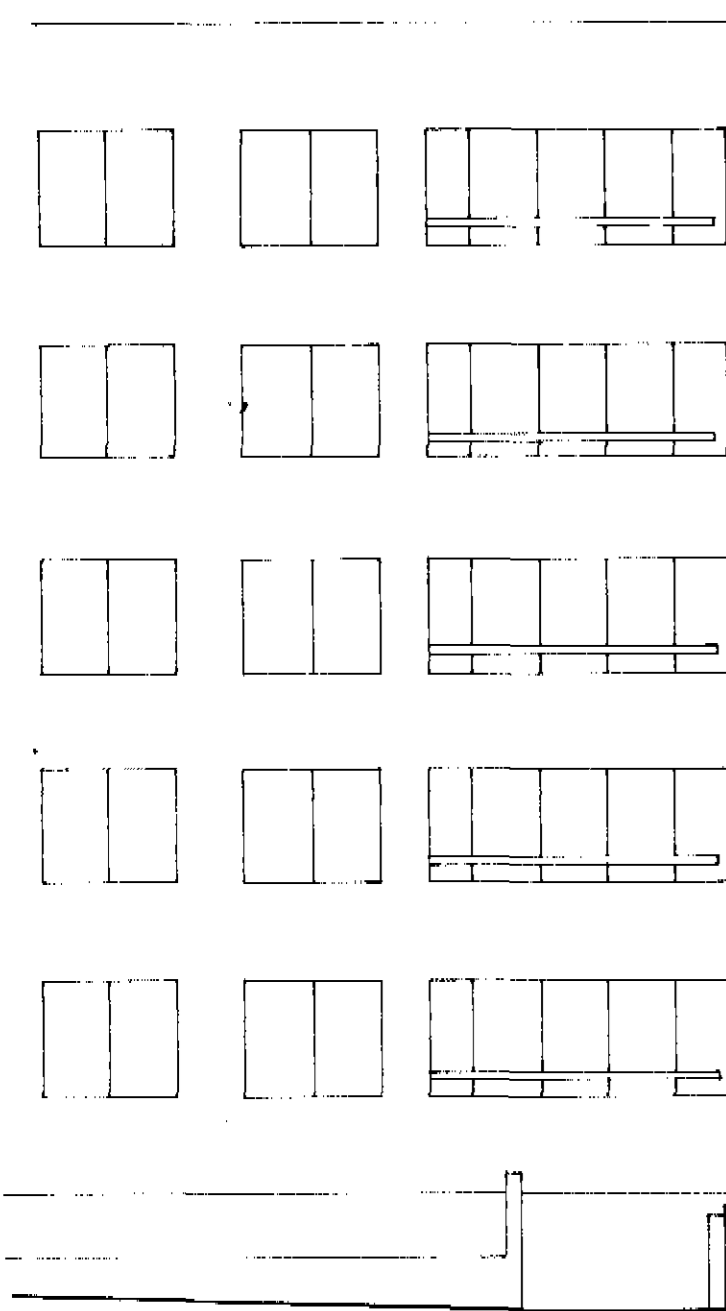
THIRD FLOOR PLAN



LOCATION PLAN

EXTERNAL FINISHES

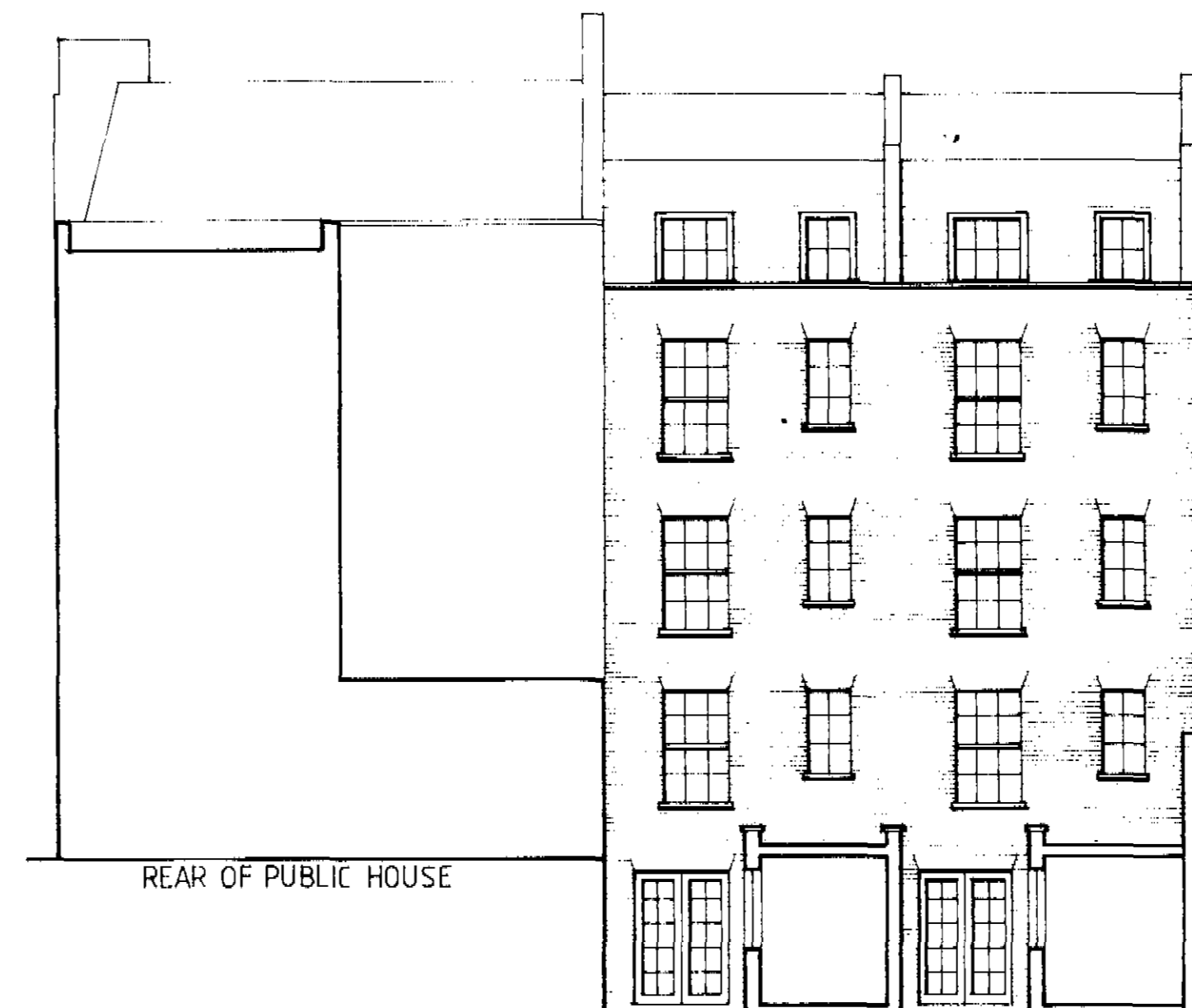
WALLS lbstock Laybrook med dark multi stock  
 MANSARD natural slates



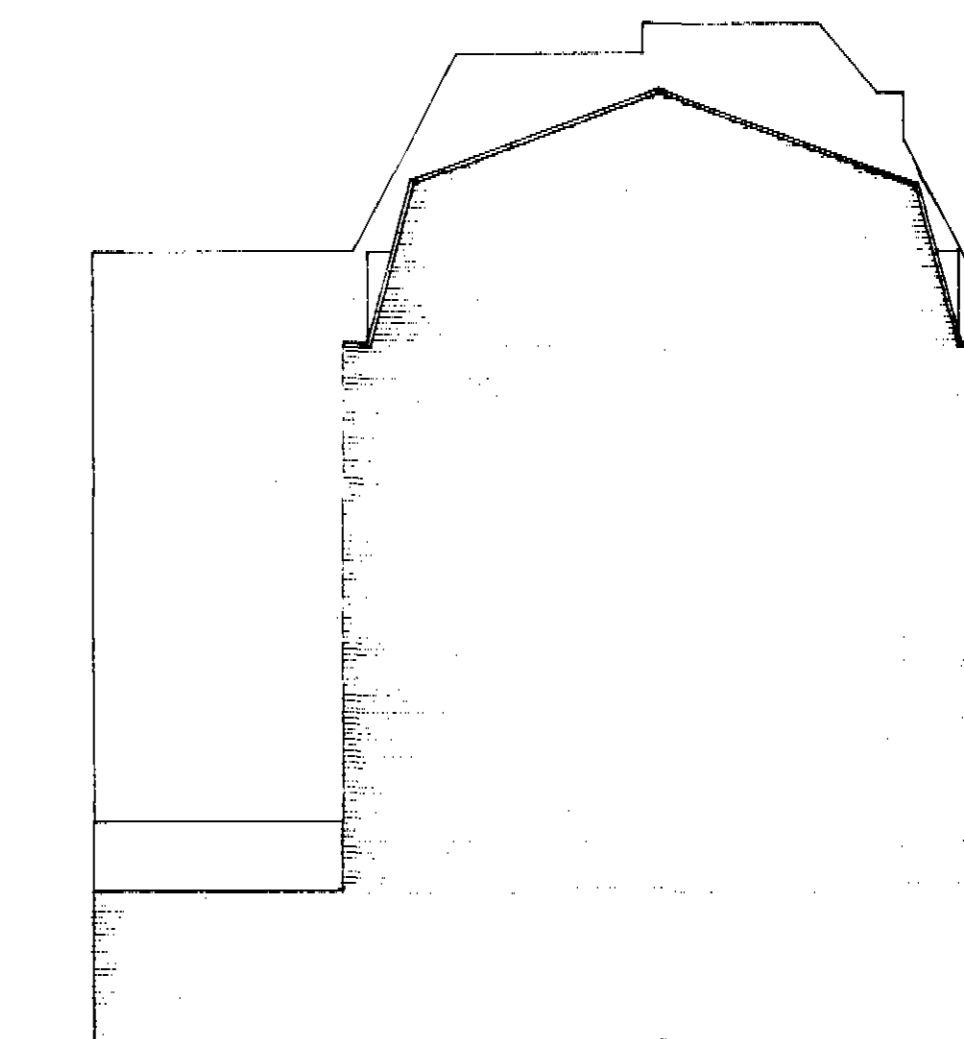
FLATS



FRONT ELEVATION - SOUTH



REAR ELEVATION - NORTH



SIDE ELEVATION - WEST

LONDON BOROUGH OF CAMDEN  
 TOWN AND COUNCIL PLANNING ACTS  
 21 FEB 1984  
 PLANS NOT APPROVED  
 ON BEHALF OF THE COUNCIL

M15/13x/A/37003 (R2)

Rev B Dining omitted, Bed 2 added 23/1/84  
 Rev A double slope to mansard 5/1/85

18/20 NORTHINGTON STREET  
 LONDON WC1

PROPOSED 2NO. 2 BEDROOM  
 MAISONNETTES WITH  
 3NO. 3 BEDROOM FLATS OVER

LONDON BOROUGH OF CAMDEN  
 TOWN AND COUNCIL PLANNING ACTS  
 - 7 FEB 1984  
 PLANS NOT APPROVED  
 ON BEHALF OF THE COUNCIL  
**DEFERRED**

SCALE 1:100 MAY 83

DRG NO. NS 2 B