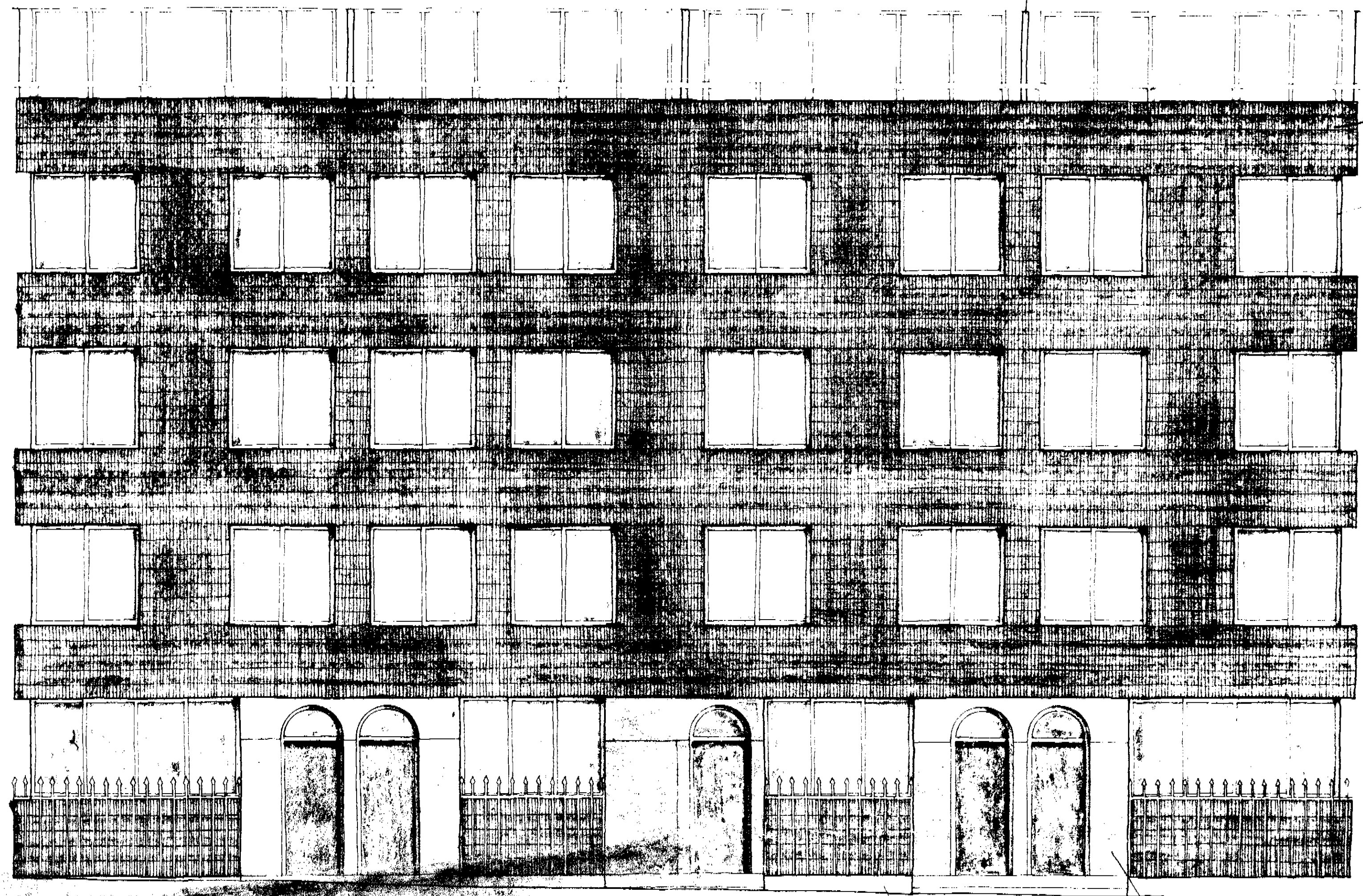


metal panels
(part of interior is operable, as
shown on floor plans)
Preferably of same colour
as the entrance door surround.

aluminum
flashing

dark natural
clay tiles (as
per the sample)
used horizontally

aluminum
horizontal slider
windows
with arched
finials



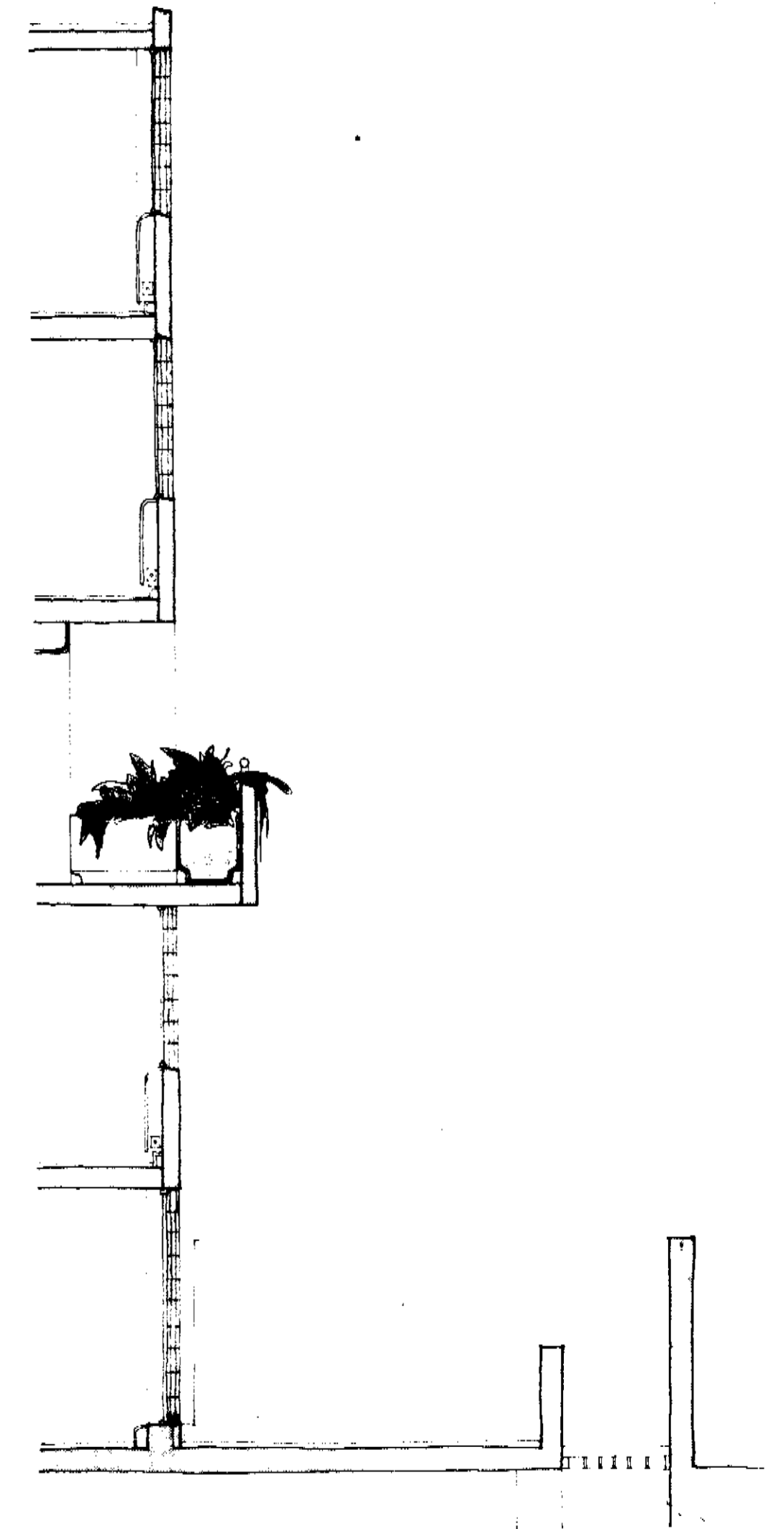
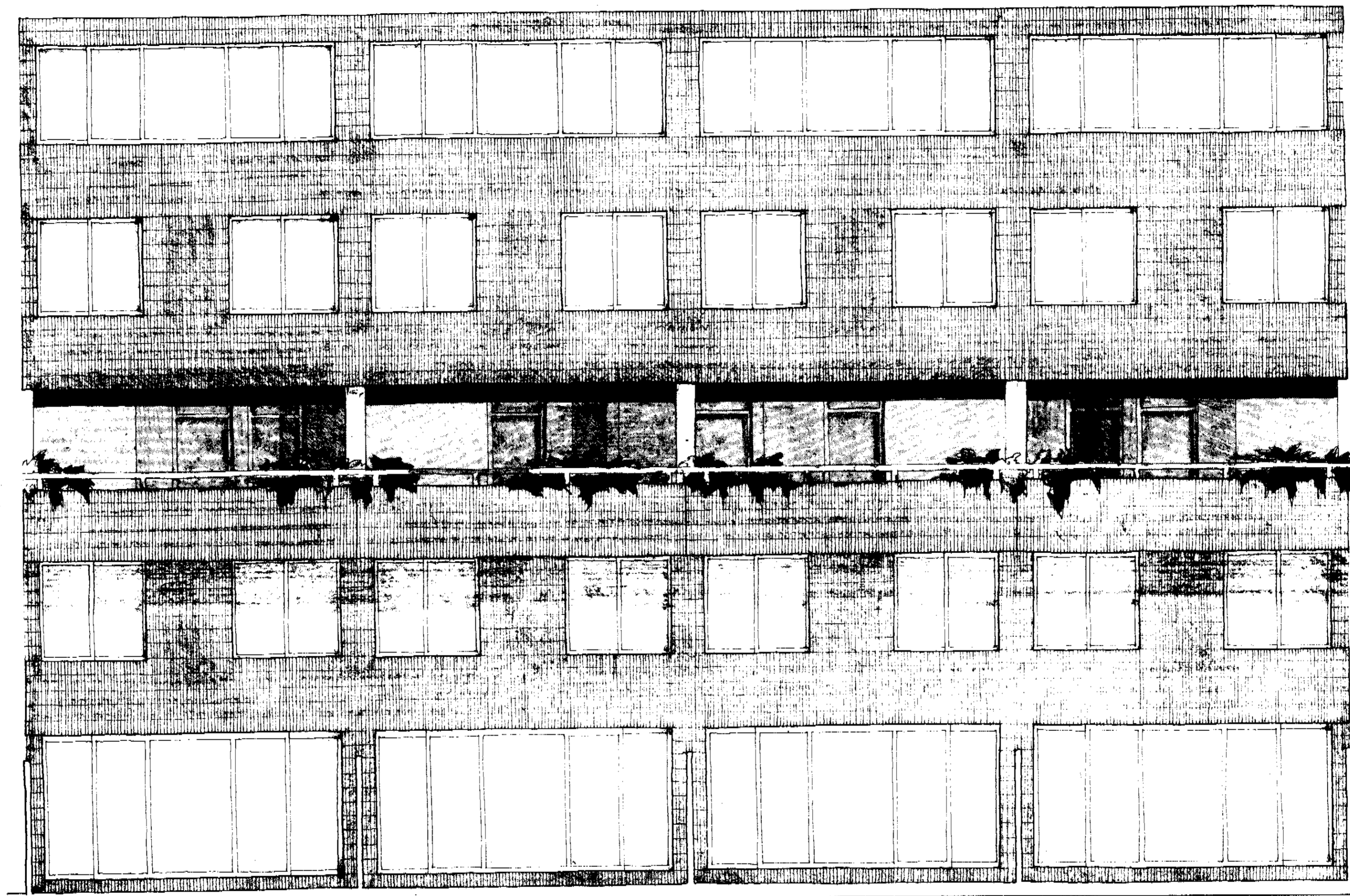
concrete upland
to pavement
with railing of
constant height
around facade
mead.

flush finished
door surround and
storage/delivery units
probably of
white
with porridge/oatmeal
glaze and smooth
finish

LONDON BOROUGH OF CAMDEN
SET OF
PLANS APPROVED
DISAPPROVED
25 APR 1973
ON BEHALF OF THE COUNCIL

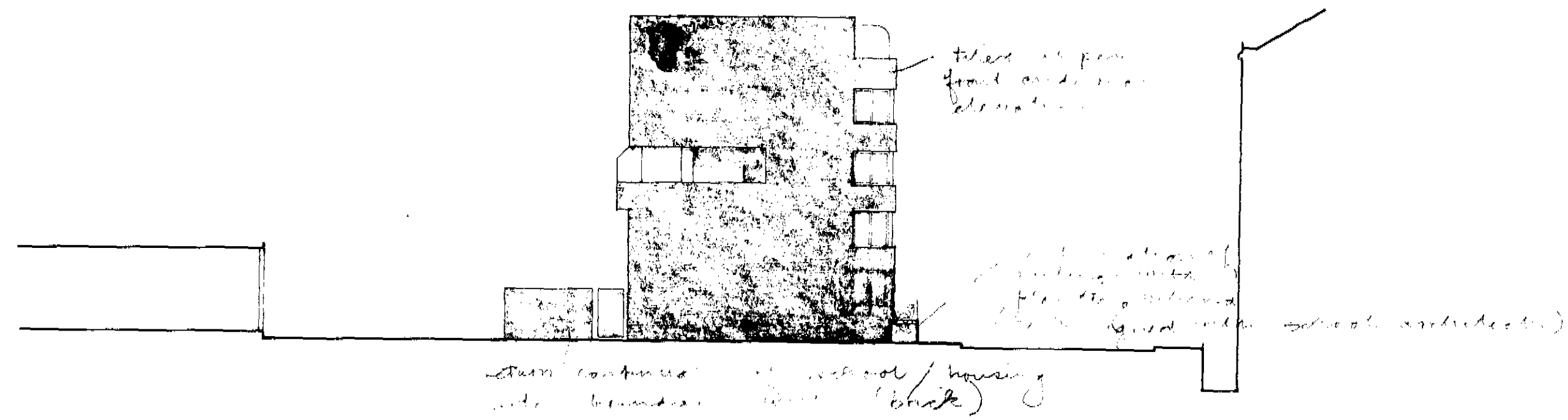
M15 13x A 15833

MILLMAN STREET REDEVELOPMENT MS 119
WEST ELEVATION STACK A 1:50 19.7.73
FARRELL/GRIMSHAW PARTNERSHIP
ARCHITECTS AND TOWN PLANNING CONSULTANTS
8 BADDINGTON STREET LONDON W1M 4DN
OFF BAKER STREET TEL: 01 637 8555/487 9544

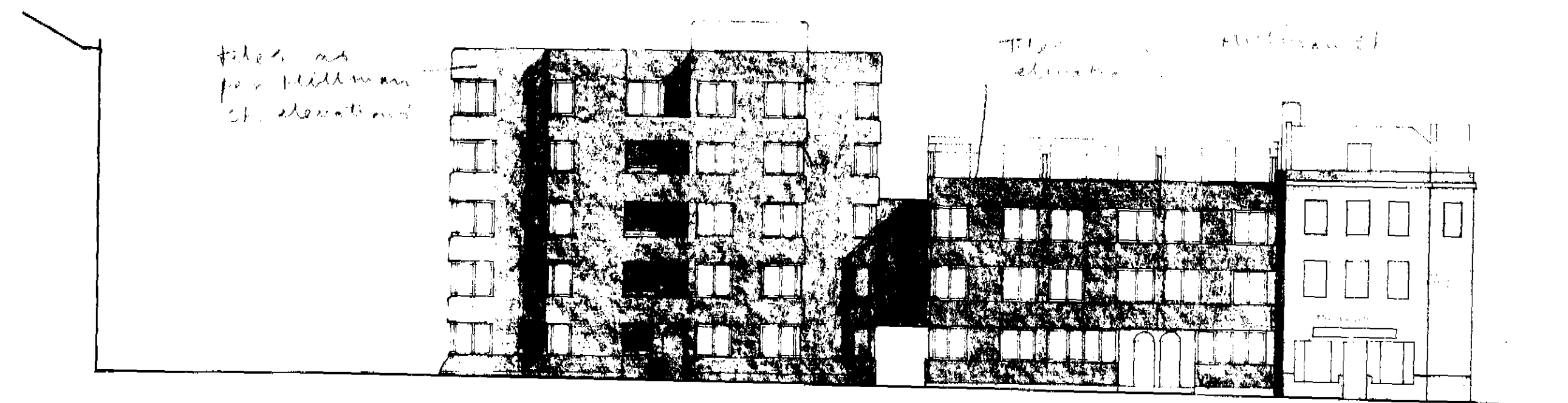


M15 13x A 1333

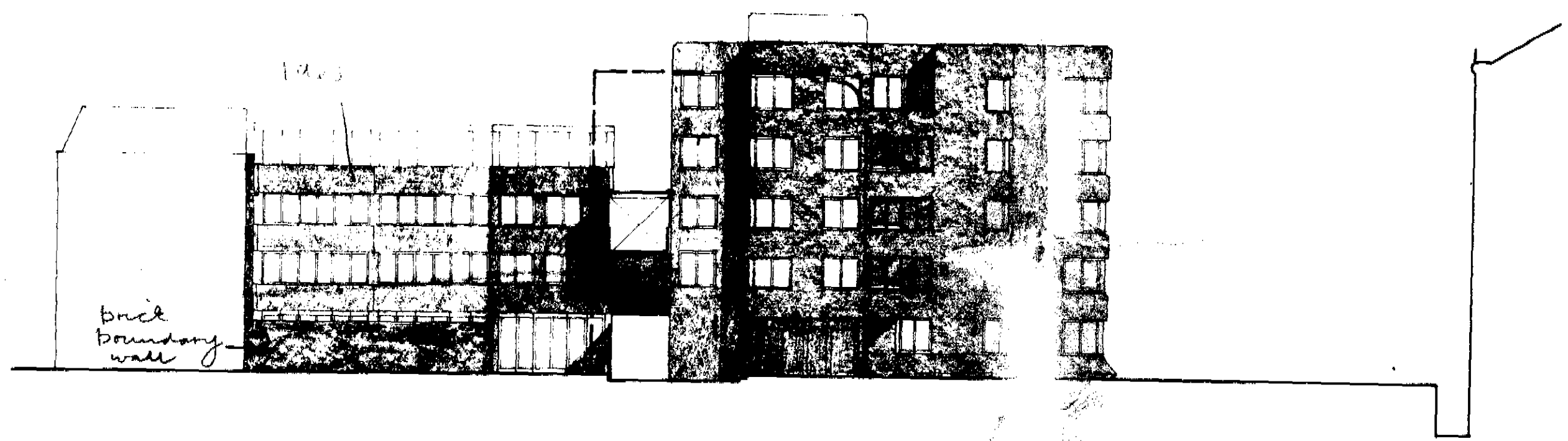
MILLMAN STREET REDEVELOPMENT MS 220
EAST ELEVATION STACK A 1/50 19.7.73
FARRELL/GRIMSHAW PARTNERSHIP
ARCHITECTS AND TOWN PLANNING CONSULTANTS
8 PADDINGTON STREET LONDON W1M 4DN
(OFF BAKER STREET) TEL: 01 637 3855/487 2566



SCHOOL ENTRANCE : SOUTH ELEVATION



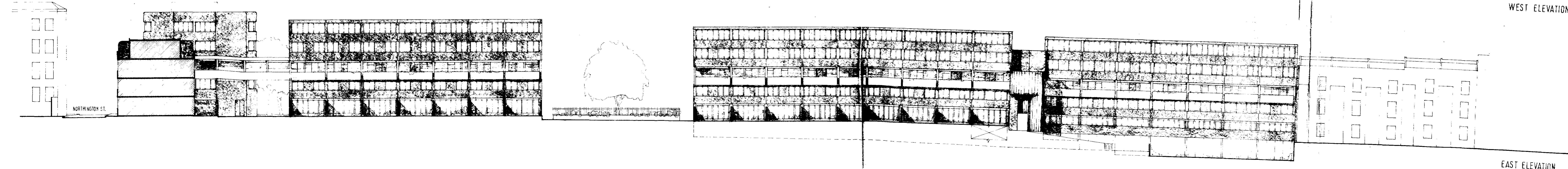
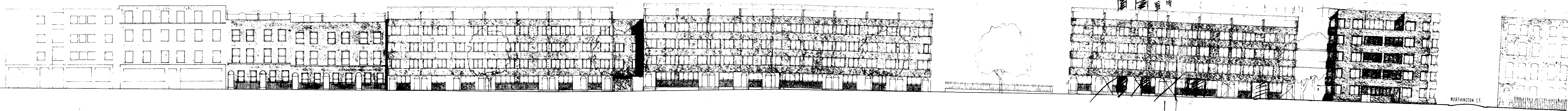
NORTHINGTON STREET ELEVATION



M15/13x/A/15833
MILLMAN PLACE : SOUTH ELEVATION

MILLMAN STREET MS 205
ELEVATIONS 1:200 1:2-1973

FARRELL/GRIMSHAW PARTNERSHIP
ARCHITECTS AND TOWN PLANNING CONSULTANTS
8 PADDDINGTON STREET LONDON W1W 4DN
(OFF BAKER STREET) TEL: 01 637 3933/487 9566



M15/13/A/15883

MILLMAN STREET MS 204
WEST AND EAST ELEVAT. DWS TIGB 1/2/1973
FARRELL/GRIMSHAW PARTNERSHIP
ARCHITECTS AND TOWN PLANNING CONSULTANTS
18 DORINGTON STREET LONDON W1N 4HN
OFF BAKER STREET TEL 01 204 487566