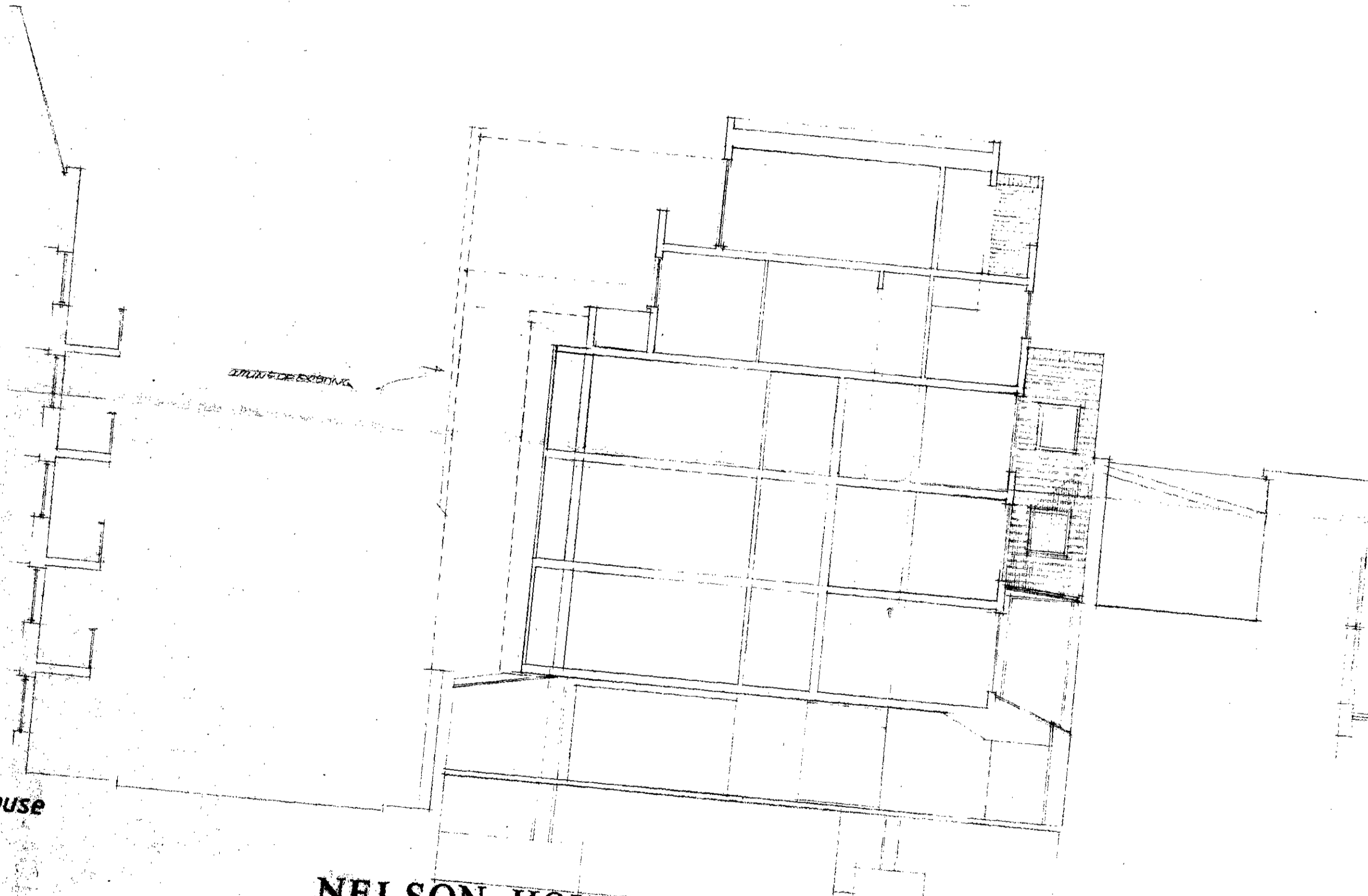
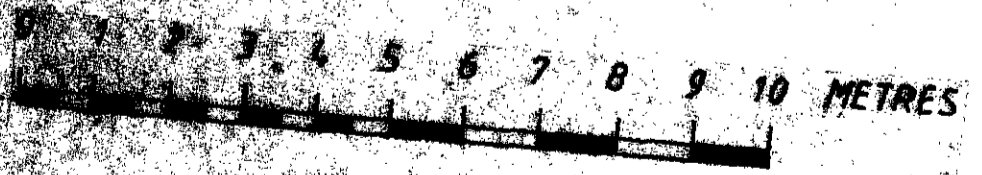


Do not scale from this drawing.  
All dimensions are to be checked on site.  
NOTES



Cobden house

NELSON HOUSE, CARLOW STREET, LONDON NW1 works



P9600035R3

C9600036R3

LONDON BOROUGH OF CAMDEN  
TOWN AND COUNTRY PLANNING ACTS  
06 FEB 1997  
PLANS NOT APPROVED  
ON BEHALF OF THE COUNCIL

P9600035R4

SECTION B-B  
AS PROPOSED  
COPY COPY

ISSUE	
SCALE	DATE
1/100	JUN 96
DRAWING N°	REVISION
836/13	E
ARCHITECTS	TOWN PLANNERS DESIGNERS

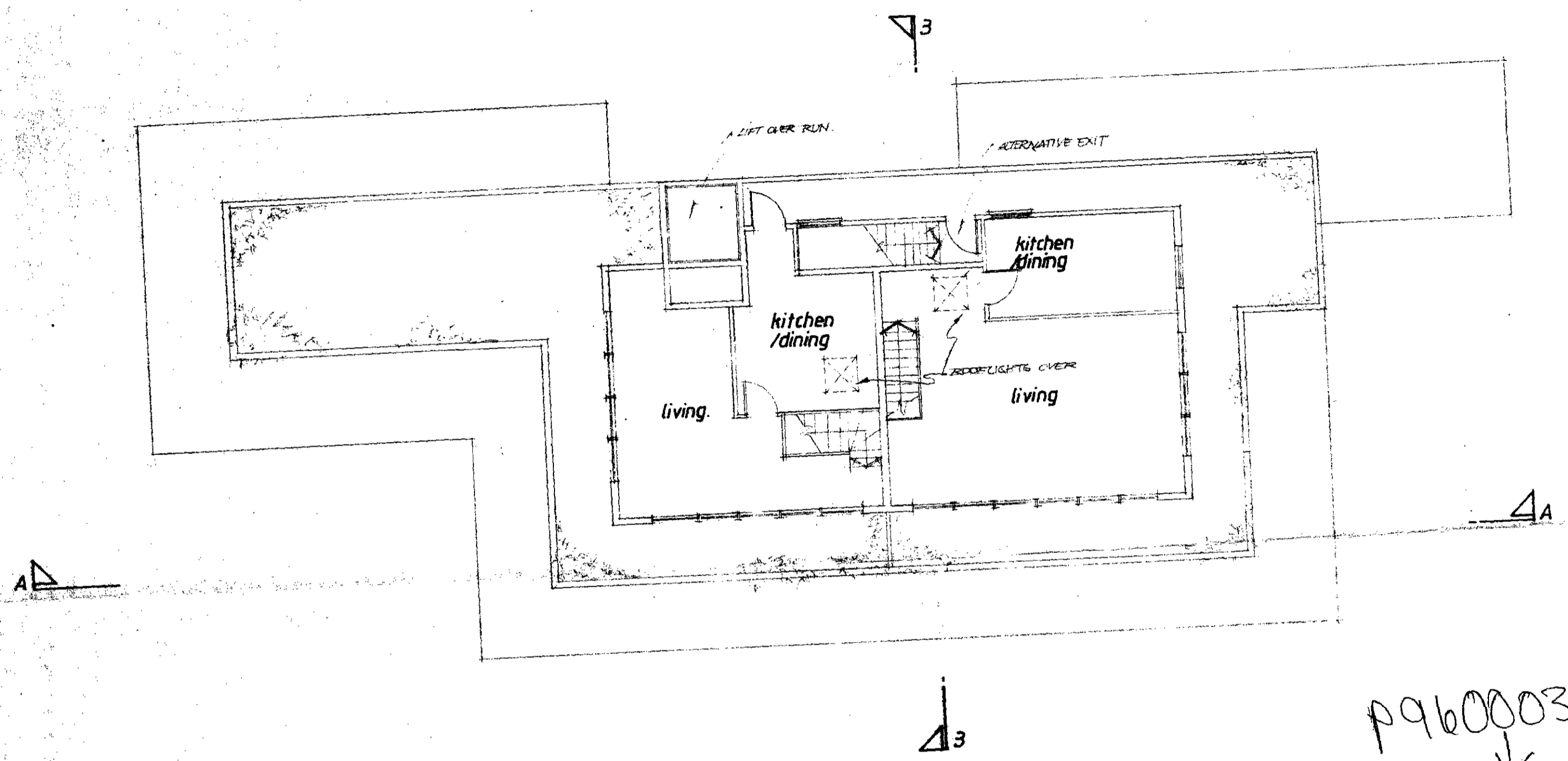
C9600036R4

plans approved 6/2

**INHOUSE**  
DESIGN ASSOCIATES

N° 6 BLACKSTOCK MEWS BLACKSTOCK ROAD  
ISLINGTON LONDON N4 2BT 0171-359 5044

Do not scale from this drawing.  
All dimensions are to be checked on site.  
NOTES



REVISIONS  
JOB

E 9.9.96 AMENDMENTS TO GLAZING ON SOUTH EAST ELEVATION  
D 16.8.96 GENERAL AMENDMENTS

P9600035R4

LONDON BOROUGH OF CAMDEN  
TOWN AND COUNTRY PLANNING ACTS  
06 FEB 1997  
PLANS NOT APPROVED  
ON BEHALF OF THE COUNCIL

DRAWING  
FIFTH FLOOR PLAN  
AS PROPOSED

Case Copy

NELSON HOUSE, CARLOW STREET, LONDON NW1



C9600036R3  
P9600035R3

C9600036R4  
plans approved 11/6/97

ISSUE

SCALE 1/100 DATE AUG 96

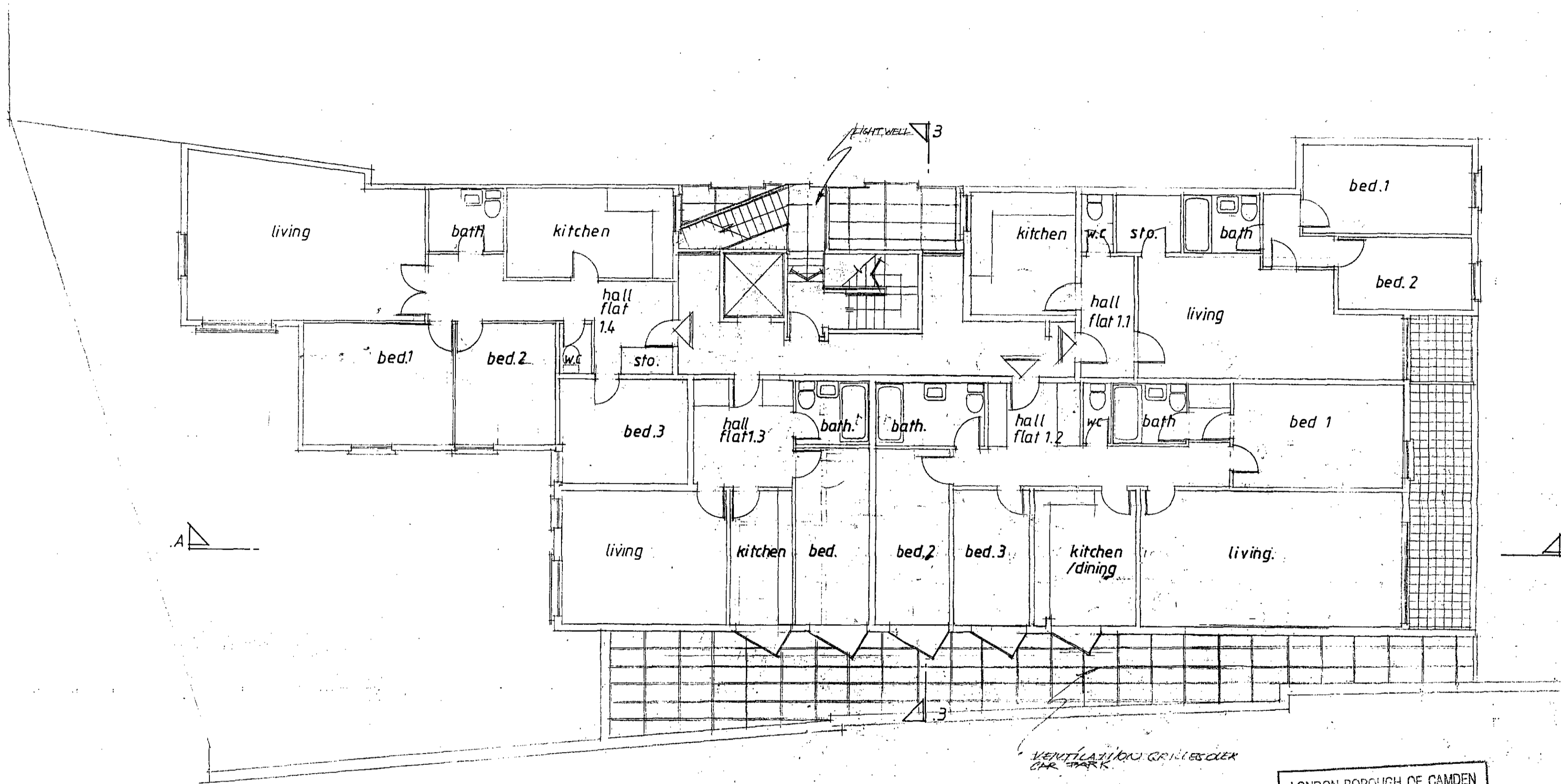
DRAWING N° 83678 REVISION E.

ARCHITECTS TOWN PLANNERS DESIGNERS

**INHOUSE**  
DESIGN ASSOCIATES

N° 6 BLACKSTOCK MEWS BLACKSTOCK ROAD  
ISLINGTON LONDON N4 2BT 0171-359 5044

Do not scale from this drawing.  
All dimensions are to be checked on site.  
NOTES



REVISIONS  
JOB

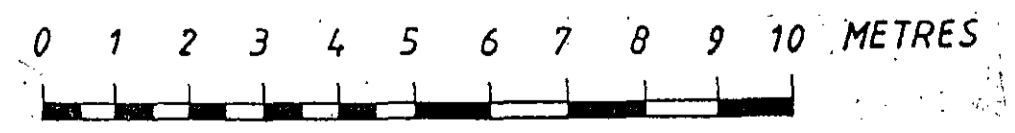
9.9.96 FLAT 1.4 LIVING  
CIT. 3.16. APPROVED TO OBTAIN STAIRCASE

LONDON BOROUGH OF CAMDEN  
TOWN AND COUNTRY PLANNING ACTS  
06 FEB 1997  
PLANS NOT APPROVED  
ON BEHALF OF THE COUNCIL

DRAWING  
FIRST FLOOR PLAN  
AS PROPOSED

*Case Copy*

NELSON HOUSE, CARLOW STREET, LONDON NW1



P 9600035R4

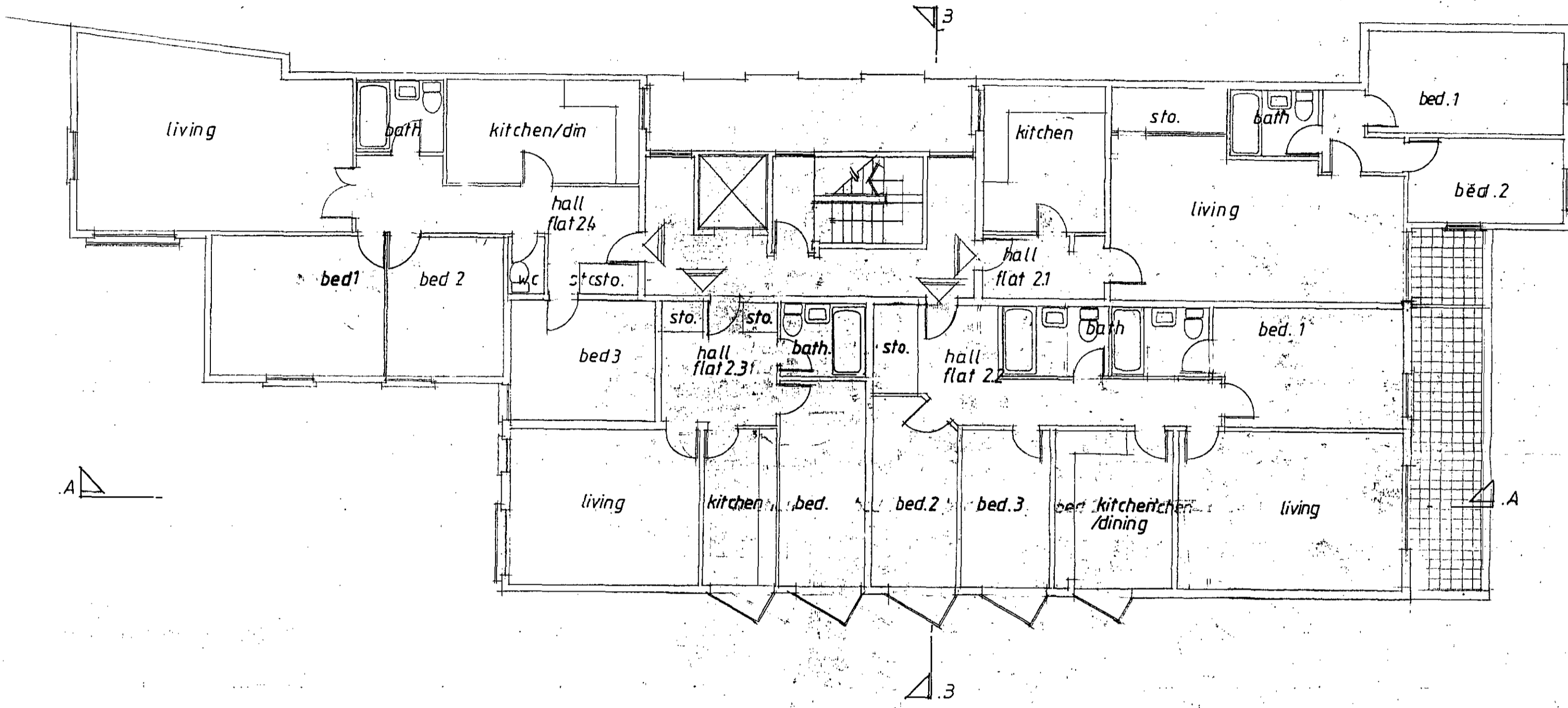
*P 9600035R4 plans approved 6/2*

ISSUE		
SCALE	DATE	
1/100	AUG 96	
DRAWING N°	REVISION	
836 10.4	E	
ARCHITECTS	TOWN PLANNERS	DESIGNERS

**INHOUSE**  
DESIGN ASSOCIATES

N° 6 BLACKSTOCK MEWS BLACKSTOCK ROAD  
ISLINGTON LONDON N4 2BT 0171-359 5044

Do not scale from this drawing.  
All dimensions are to be checked on site.  
NOTES



2.4.  
D. DEC 96 ALTERATION TO FLATS 2.3/2.2 LAYOUTS  
C. 99-96 FLAT 2.4 LIVING MINOR ALTERATIONS

REVISIONS  
JOB

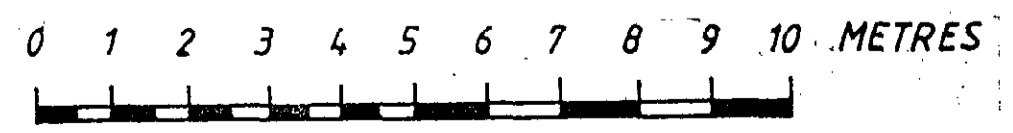
*Case Copy*

P9600035R

LONDON BOROUGH OF CAMDEN  
TOWN AND COUNTRY PLANNING ACTS  
06 FEB 1997  
PLANS NOT APPROVED  
ON BEHALF OF THE COUNCIL

NELSON HOUSE, CARLOW STREET, LONDON NW1

DRAWING  
SECOND FLOOR PLAN  
AS PROPOSED



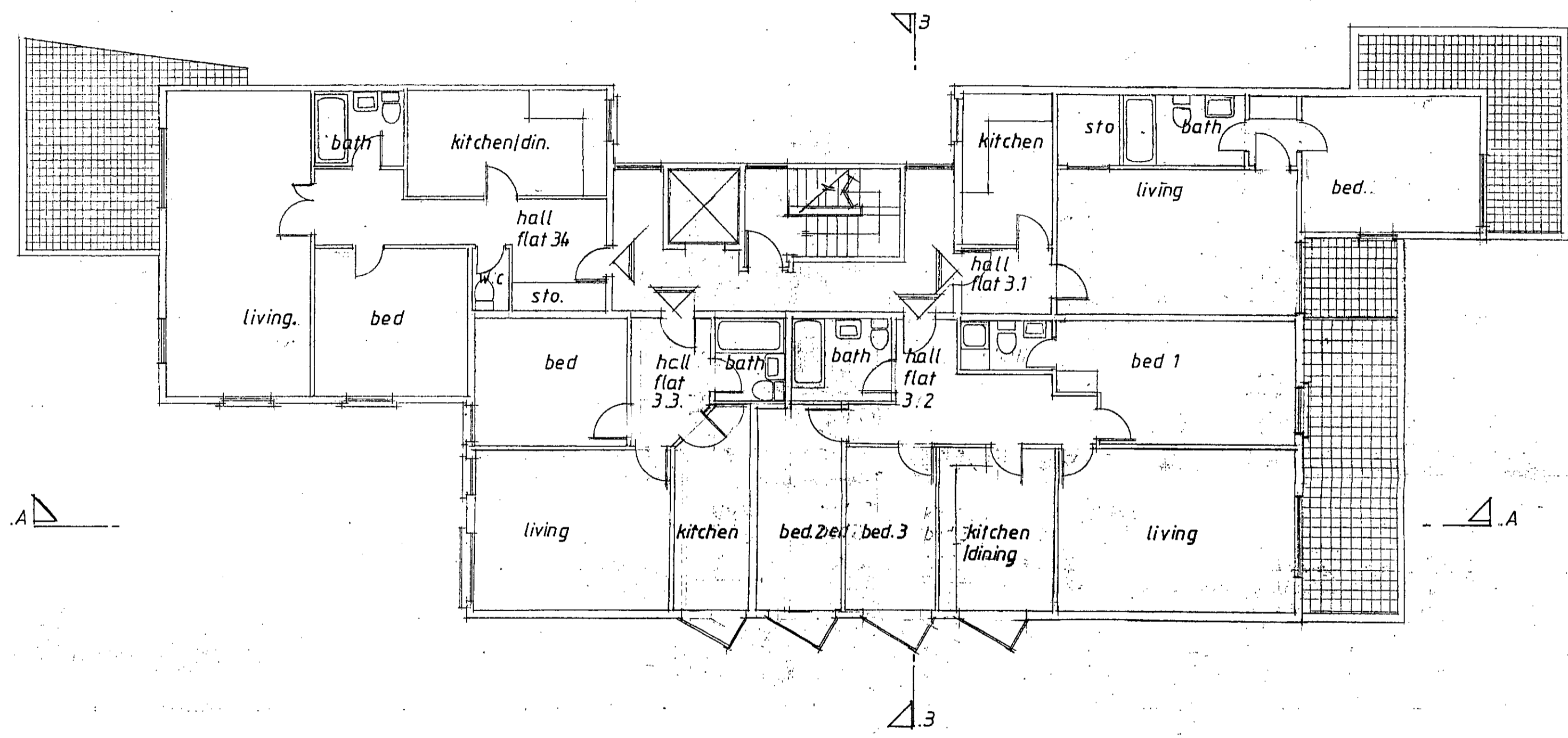
ISSUE		
SCALE	DATE	
1/100	JUL 96	
DRAWING N°	REVISION	
83675	D	
ARCHITECTS	TOWN PLANNERS	DESIGNERS

**INHOUSE**  
DESIGN ASSOCIATES

N° 6 BLACKSTOCK MEWS BLACKSTOCK ROAD  
ISLINGTON LONDON N4 2BT 0171-359 5044

C9600036R4  
*plans approved*

Do not scale from this drawing.  
All dimensions are to be checked on site.  
NOTES



C GENERAL AMENDMENTS 30/7/96  
D DEL 96 ALTERATION TO FLATS LAYOUT

REVISIONS  
JOB

*Case Copy*

DRAWING  
**THIRD FLOOR PLAN  
AS PROPOSED**

LONDON BOROUGH OF CAMDEN  
TOWN AND COUNTRY PLANNING ACTS  
06 FEB 1997  
PLANS NOT APPROVED

**NELSON HOUSE, CARLOW STREET, LONDON NW1**

ISSUE

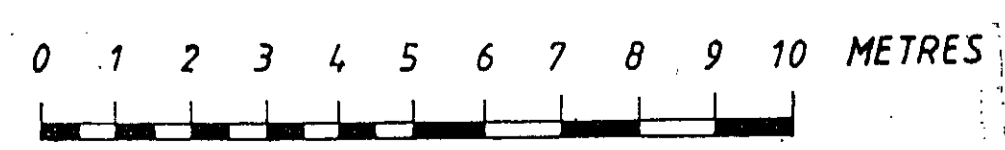
SCALE 1/100 DATE JUL 96

DRAWING N° 836/6 REVISION

ARCHITECTS TOWN PLANNERS DESIGNERS

**INHOUSE**  
DESIGN ASSOCIATES

N° 6 BLACKSTOCK MEWS BLACKSTOCK ROAD  
ISLINGTON LONDON N4 2BT 0171-359 5044

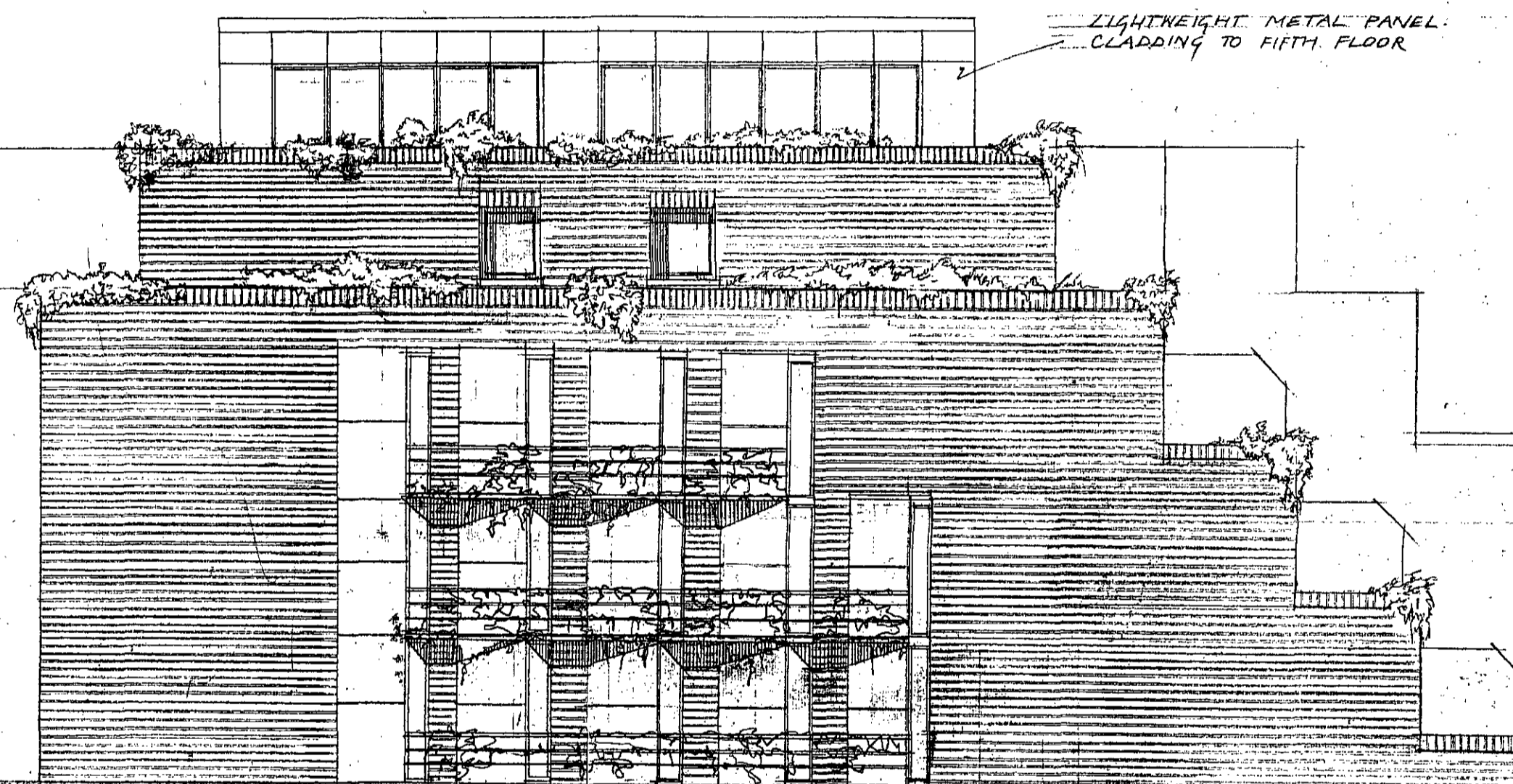


**P 9600035R4**

*C 9600036 R4 plans approved 6/2/97*

Do not scale from this drawing.  
All dimensions are to be checked on site.

NOTES



F 9.9.96 AMENDMENTS TO FIFTH FLOOR  
E: 15.8.96  
D: 30.7.96  
REVISIONS  
JOB

NELSONS YRD

CARLOW ST

P9600035R4

LONDON BOROUGH OF CAMDEN  
TOWN AND COUNTRY PLANNING ACTS  
06 FEB 1997  
PLANS NOT APPROVED  
ON BEHALF OF THE COUNCIL

DRAWING  
SOUTHWEST ELEVATION  
AS PROPOSED

*Crane Copy*

NELSON HOUSE, CARLOW STREET, LONDON NW1

0 1 2 3 4 5 6 7 8 9 10 METRES

*C9600036R4*

*plans approved  
6/2/97*

ISSUE

SCALE  
1/100

DATE  
JUL 96

DRAWING N°  
836/11

REVISION  
5

ARCHITECTS TOWN PLANNERS DESIGNERS

**INHOUSE**  
DESIGN ASSOCIATES

N° 6 BLACKSTOCK MEWS BLACKSTOCK ROAD  
ISLINGTON LONDON N4 2BT 0171-359 5044