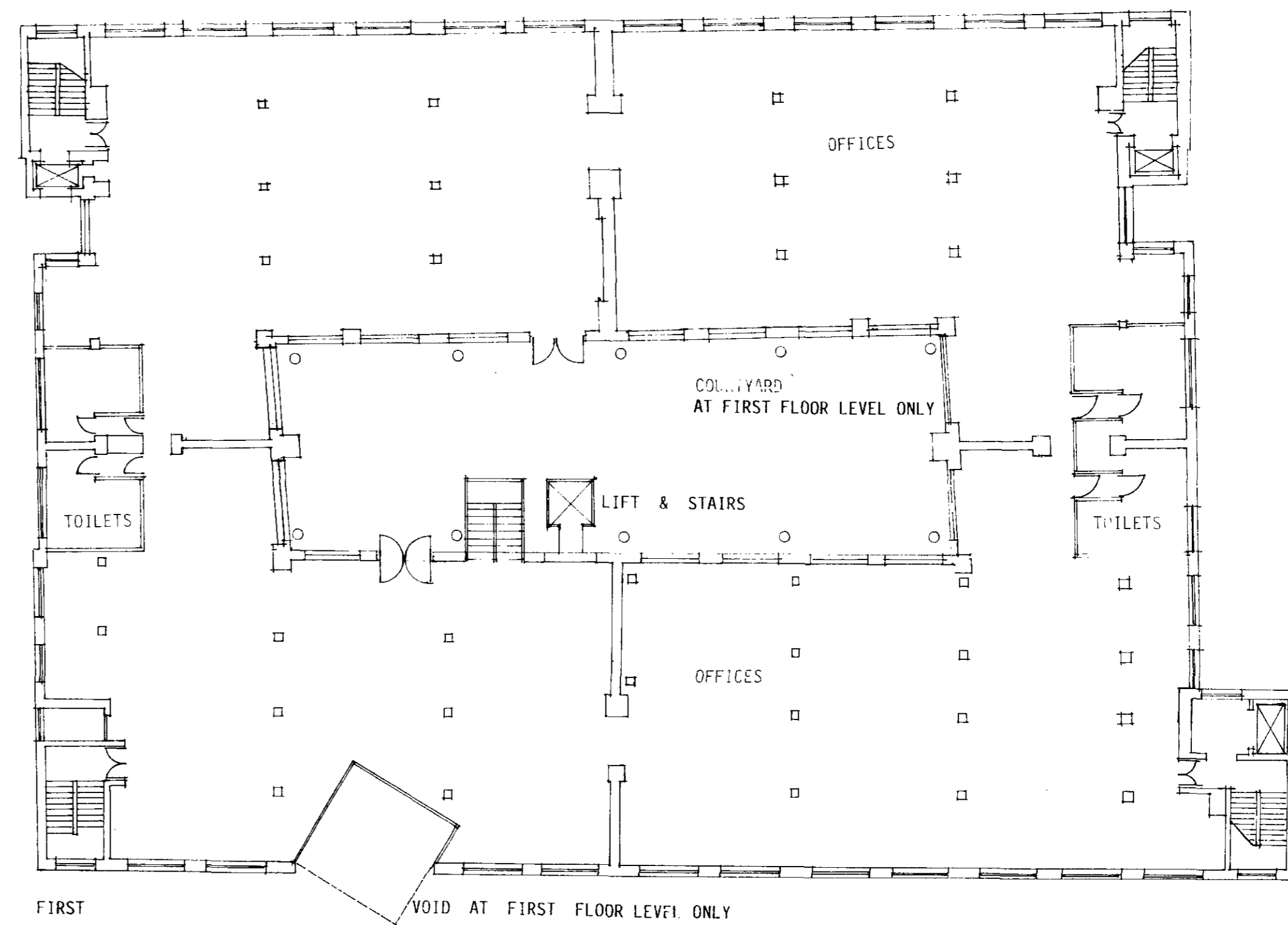
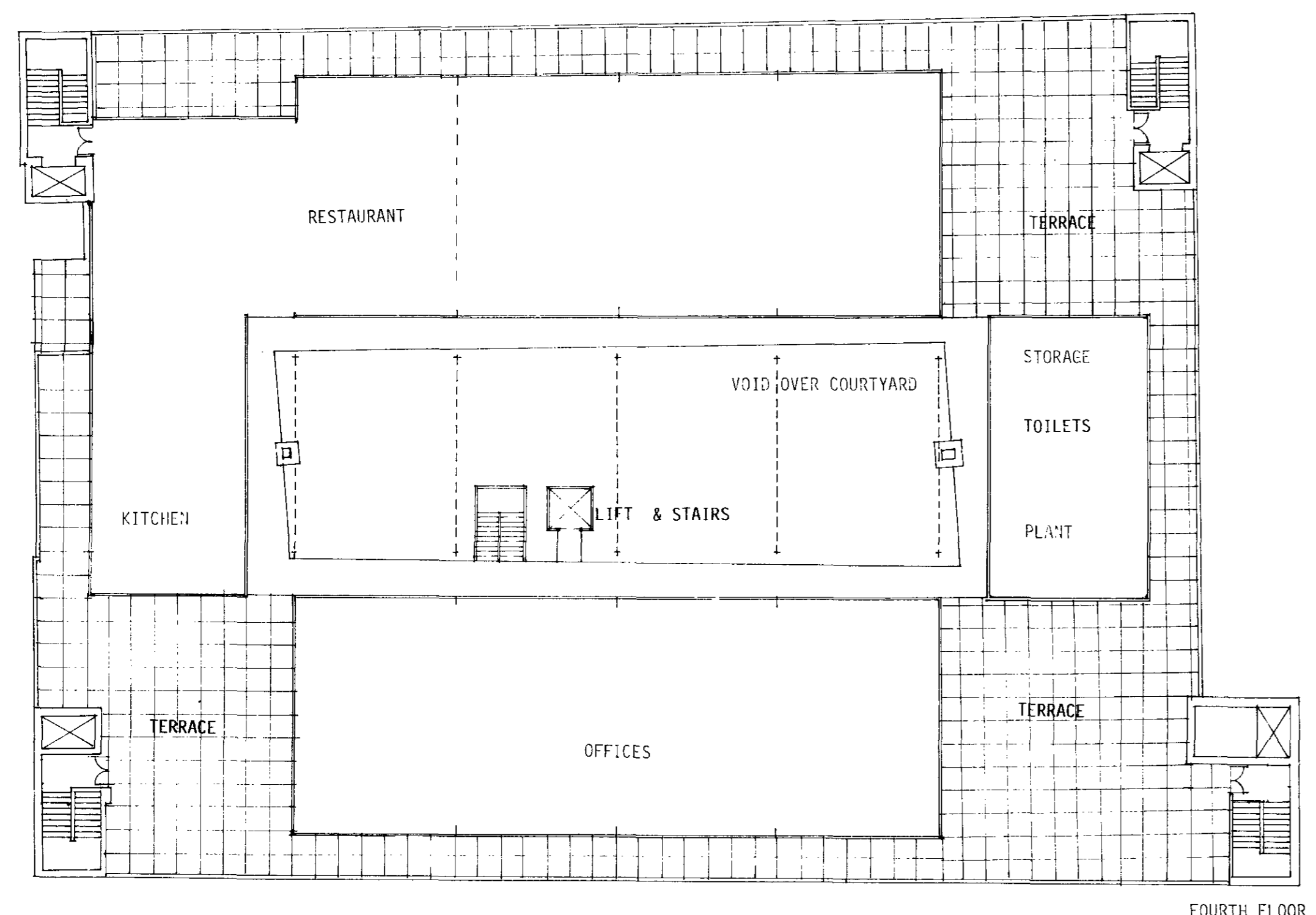


GROUND FLOOR

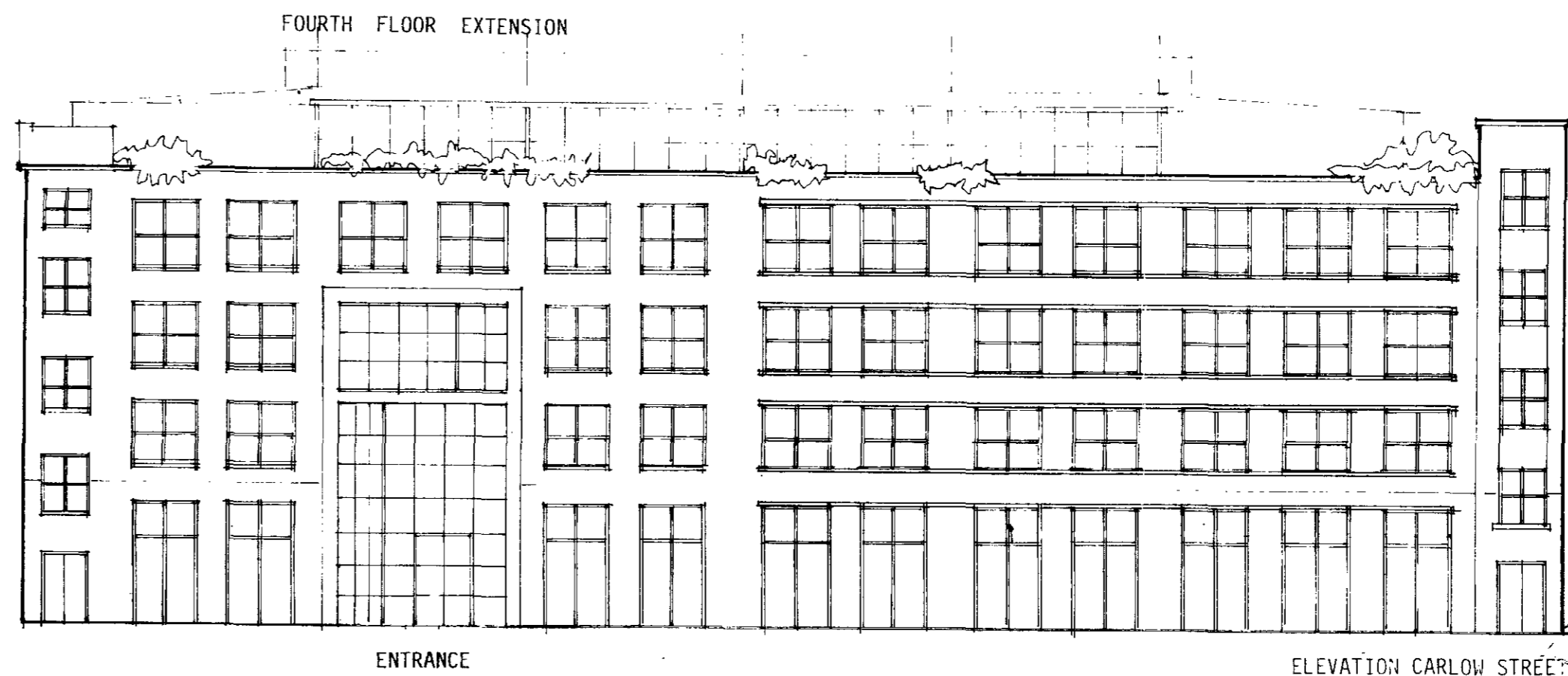


FIRST
SECOND (PART-SUBLET)
THIRD (PART-SUBLET)

FIRST, SECOND, THIRD FLOOR OFFICES



FOURTH FLOOR



ENTRANCE

ELEVATION CARLOW STREET

LONDON BOROUGH OF CAMDEN
TOWN AND COUNTRY PLANNING ACTS
8 APR 1987
PLANS APPROVED
ON BEHALF OF THE COUNCIL

- D FOURTH FLOOR AMENDED TO INCLUDE OFFICES
- C REVISED OFFICE LAYOUT
- B CENTRE LIFT AND STAIR AMENDED TO SERVE FOURTH FLOOR 20 JULY 95
- A 10 No HOUSING UNITS DELETED. INDUSTRIAL UNITS IDENTIFIED. RESTAURANT ADDED. 12 PARKING SPACES. 11 CAR + 1 VAN

JESTICO + WHILES
ARCHITECTS 01-330 0332
14-16 STEPHENSON WAY, NW1 2HD

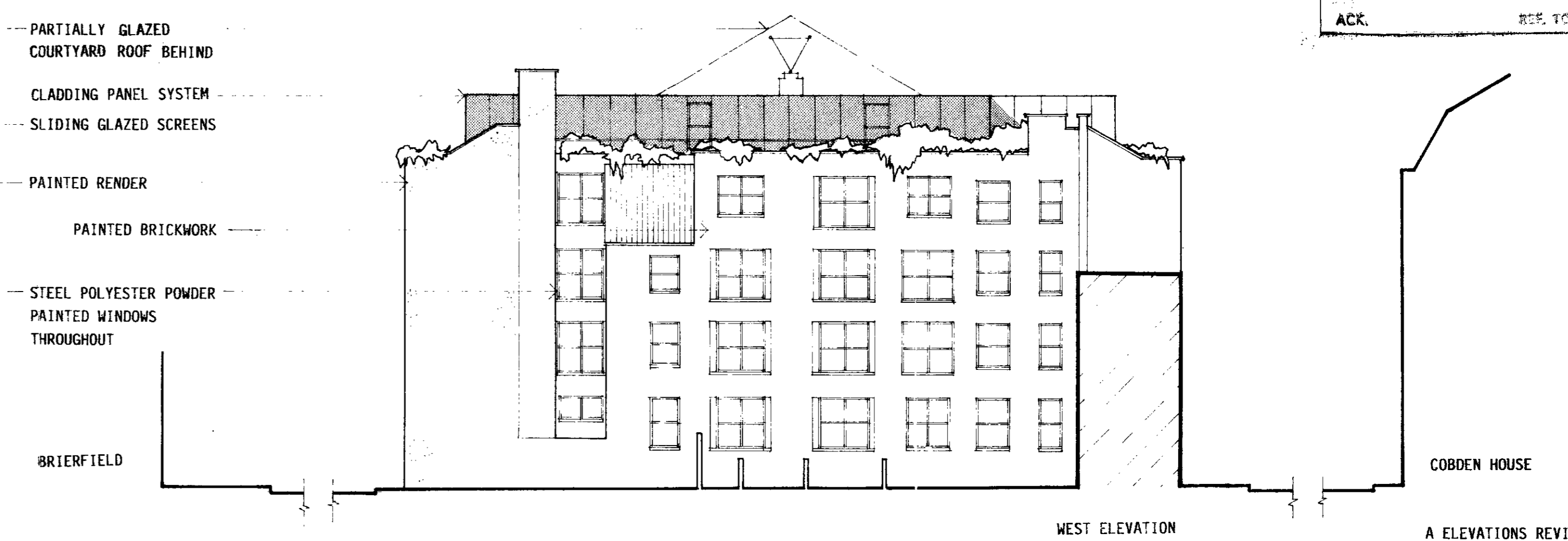
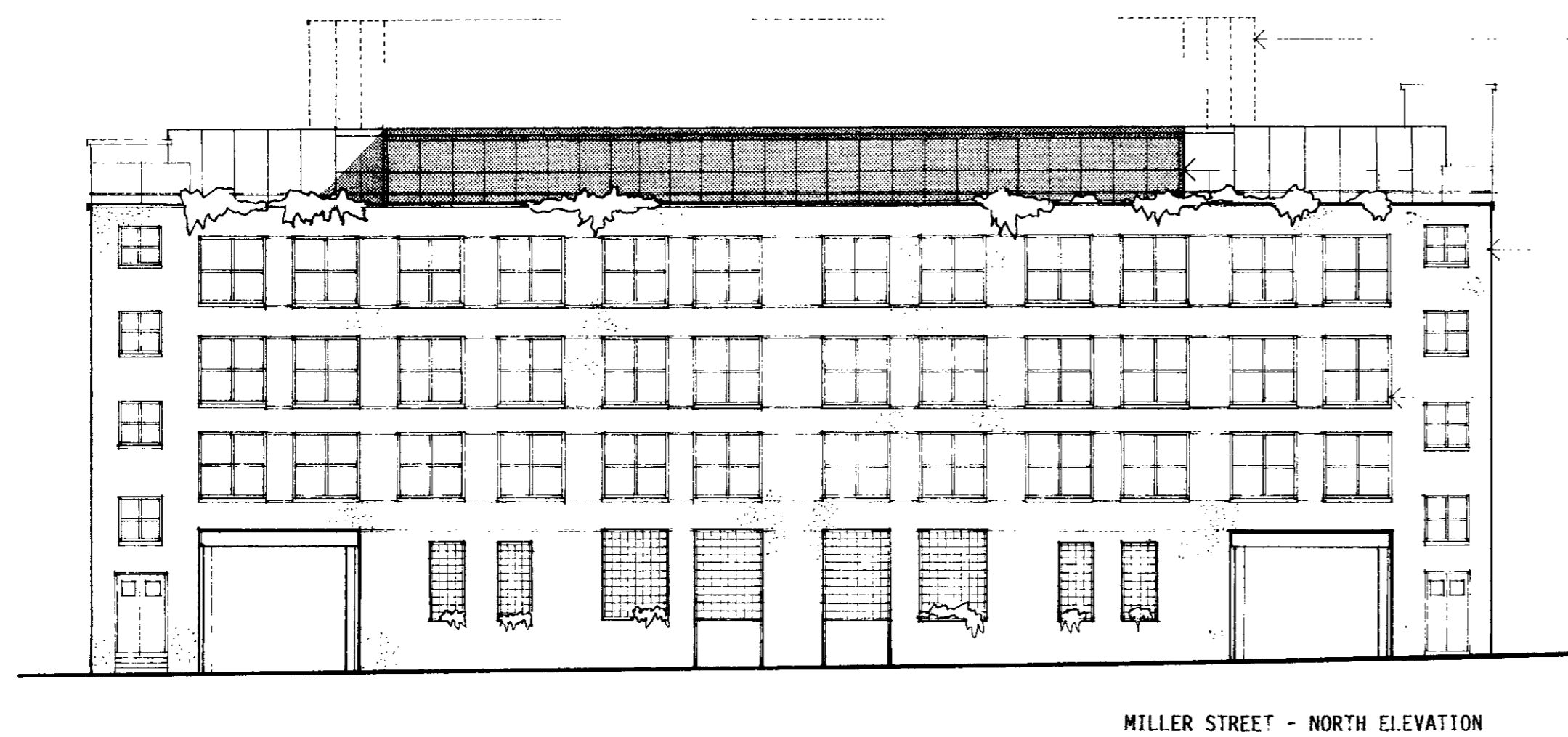
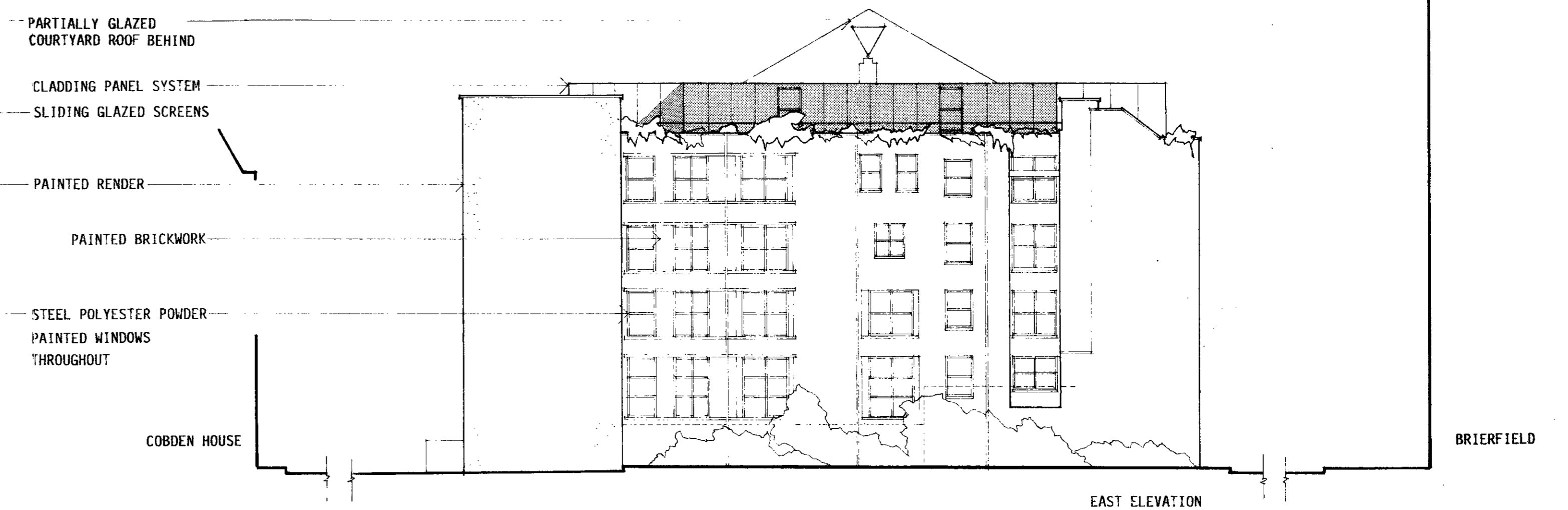
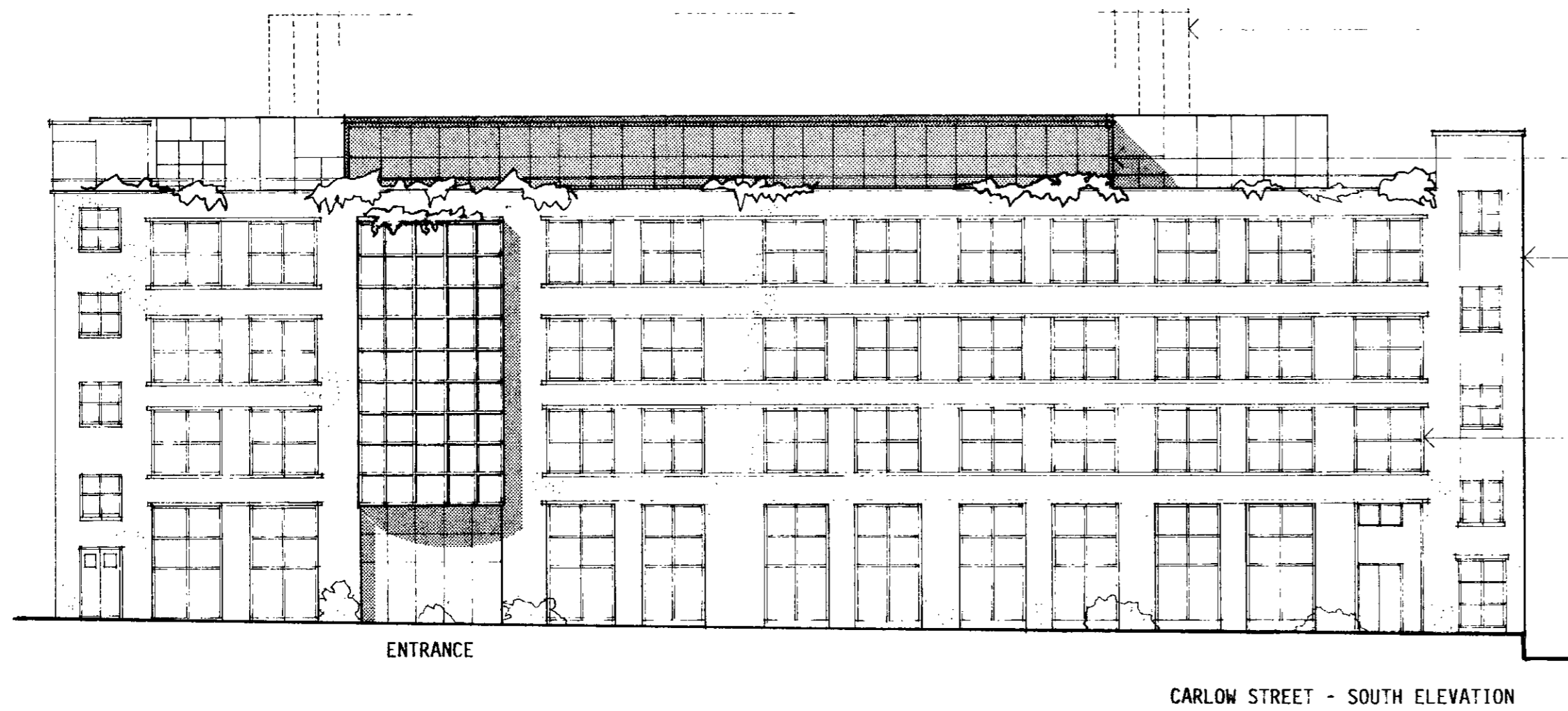
FOR CARLOW STREET, NW1
TITLE PROPOSED PLANS & ELEVATION
CLIENT SILVERLAND PROPERTIES LTD

SCALE 1:200 DATE FEB 1997

DWG No CAR 10/01 D

ALL DIMENSIONS MUST BE CHECKED ON SITE DO NOT SCALE THIS DRAWING INFORM ARCHITECTS OF ANY DISCREPANCIES

TR 010338



LONDON BOROUGH OF CAMDEN
 PLANNING AND COMMUNICATIONS
 DEPARTMENT
 24 MAR 1987 (A.M.)
 RECEIVED
 ACK. REF. TO:

LONDON BOROUGH OF CAMDEN
 TOWN AND COUNTRY PLANNING ACTS
 8 APR 1987
 PLANS APPROVED
 ON BEHALF OF THE COUNCIL

JETICO-FWHLB
 ARCHITECTS 380 0382
 14-16 Stephenson Way NW1 2HD

JOB CARLOW STREET NW1

TITLE PROPOSED ELEVATIONS

CLIENT SILVERLAND PROPERTIES LTD

SCALE 1:200 DATE JUNE '86

DWG NO CAR 10/02 A

ALL DIMENSIONS MUST BE CHECKED ON SITE
 DO NOT SCALE THIS DRAWING
 INFORM ARCHITECTS OF ANY DISCREPANCIES

A ELEVATIONS REVISED
 MARCH 1987

TP 8700338