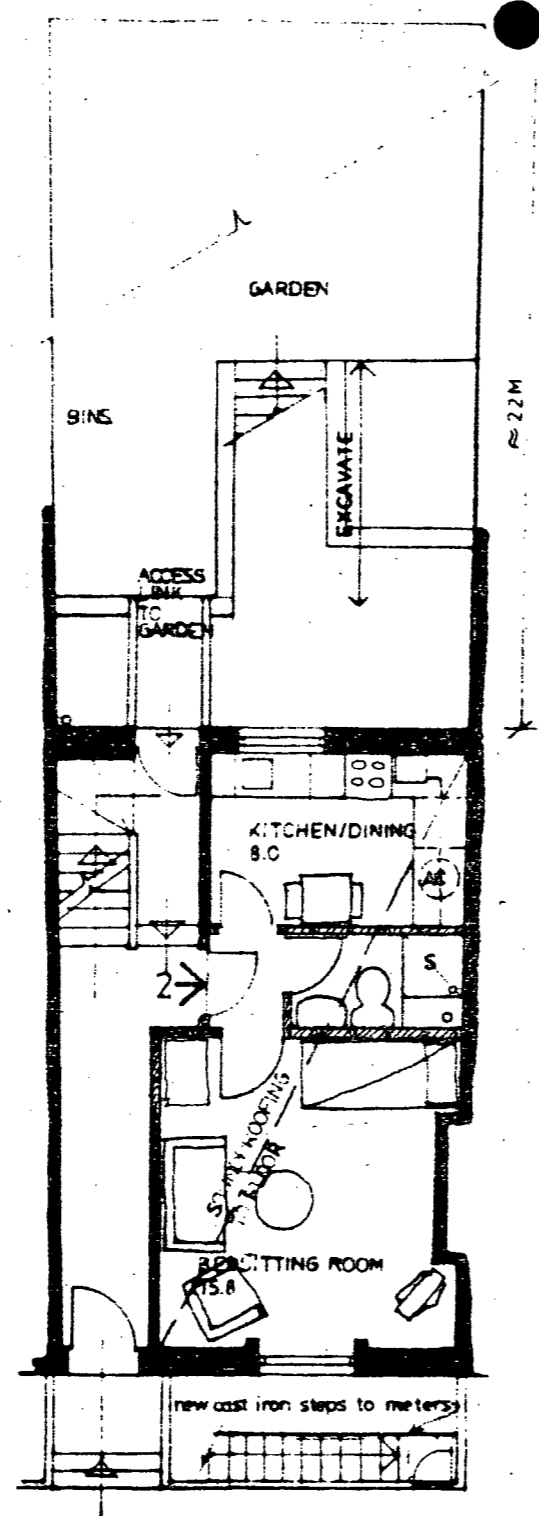
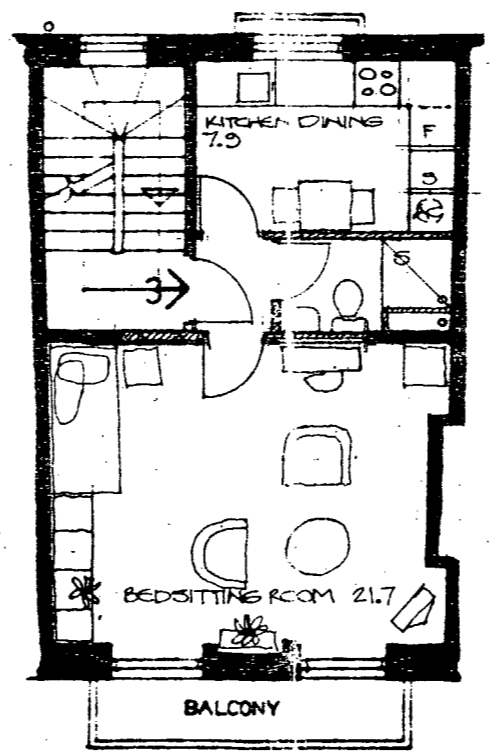


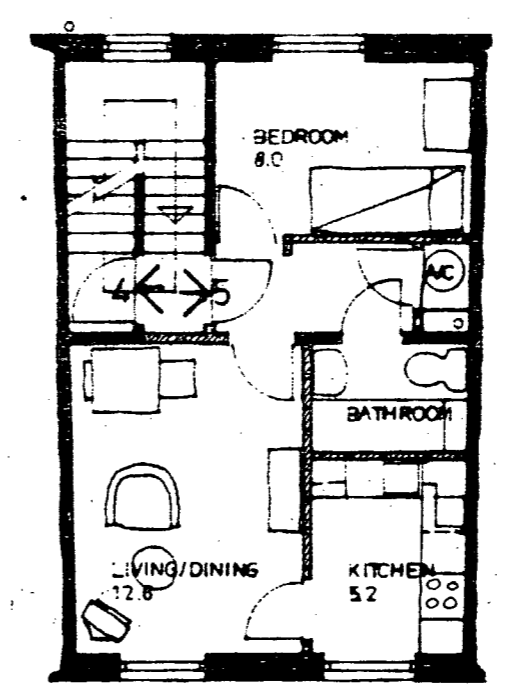
L.G.
1P 1B
TOTAL AREA 37m²
CELLAR



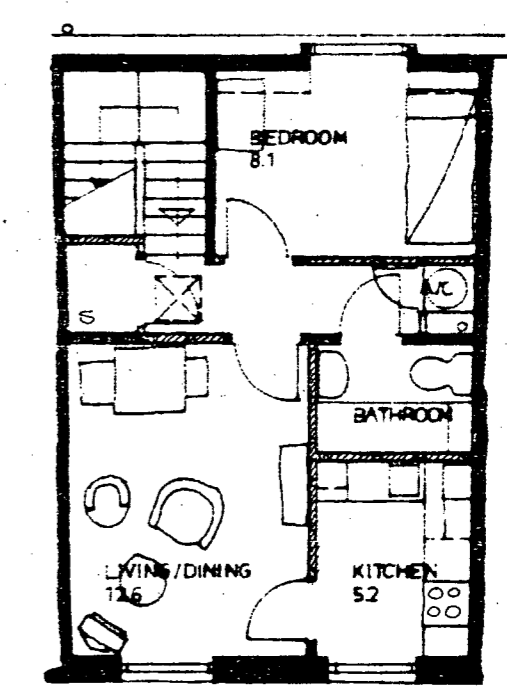
G.
1P BEDSITTING ROOM FLAT
TOTAL AREA 28m²



1st
1P BEDSITTING ROOM FLAT
TOTAL AREA 34.4m²



2nd
1P1B
TOTAL AREA 34.8m²



3rd
1P1B
TOTAL AREA 41.3m²

LONDON BOROUGH OF CAMDEN
TOWN AND COUNTRY PLANNING ACT
23 JUL 1984
PLANS ~~NOT APPROVED~~ APPROVED
ON BEHALF OF THE COUNCIL
400480 R1

20 MORNINGTON CRESCENT NW1 PROPOSALS

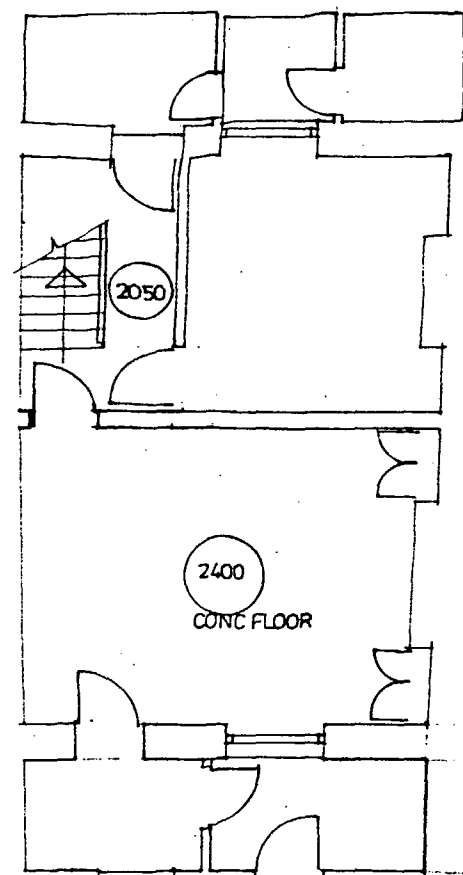
DAVID PARRY ASSOCIATES ARCHITECTS
199-200 UPPER STREET LONDON N1 01 359 613

SCALE 1:100
DATE MAY 1983
DRAWN EC

1203

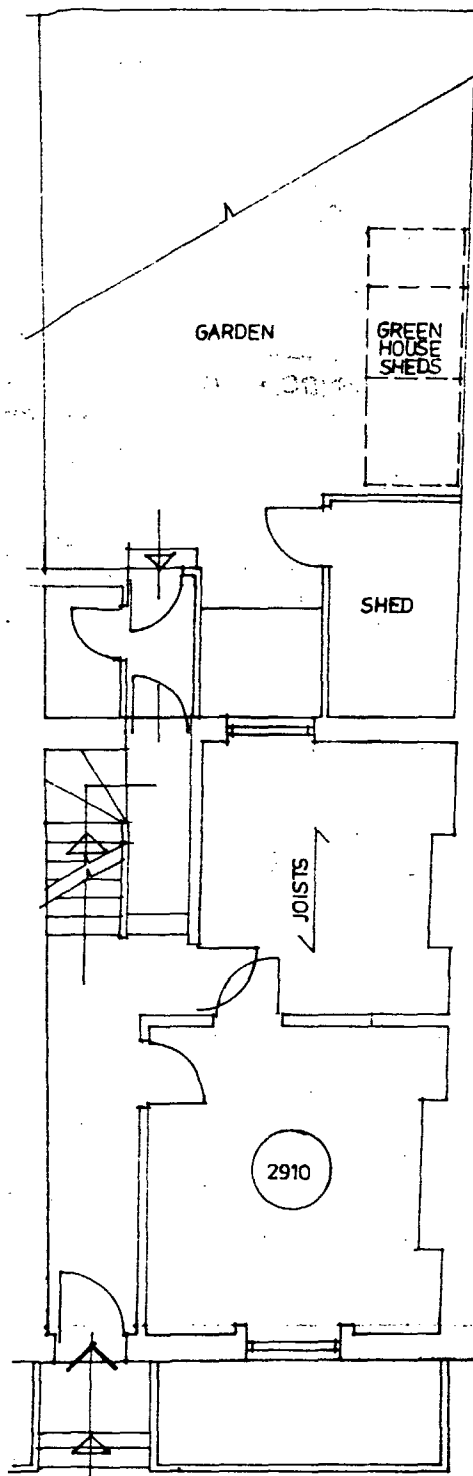
DWG NO
03B

B: JUNE 84 BS FLAT ON 1ST FLOOR RC
A: Feb 84 - minor amendments
Revisions:

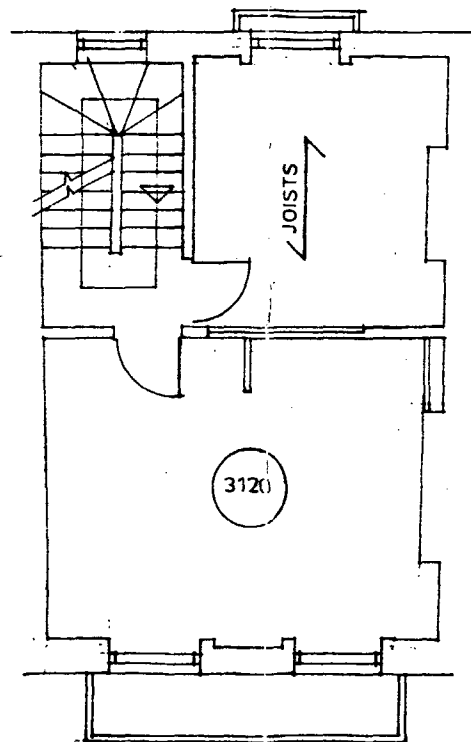


L.G.

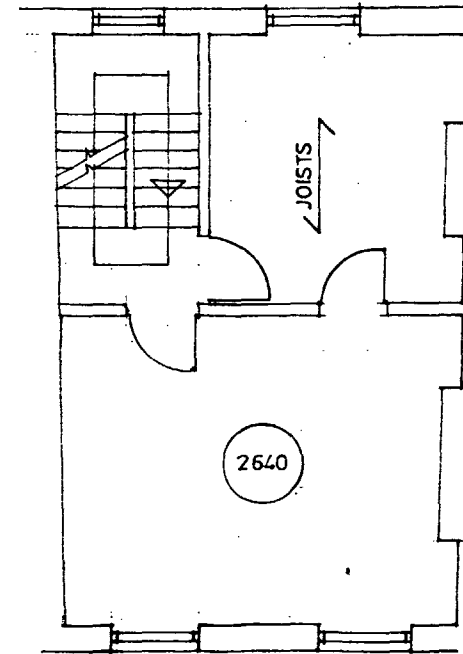
CELLAR



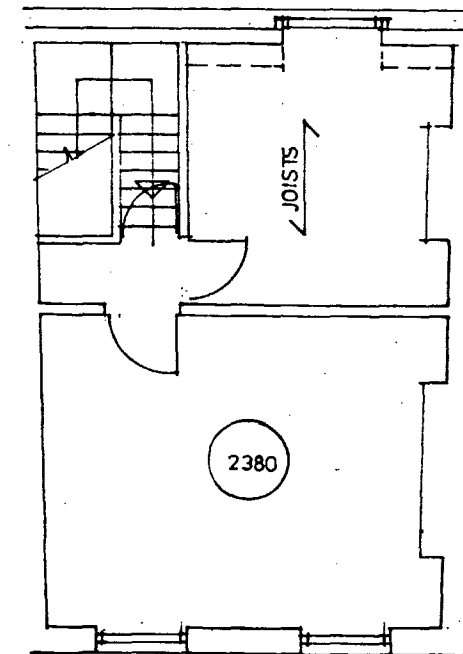
G.



1st



2nd.



3rd

LONDON BOROUGH OF CAMDEN
TOWN AND COUNTRY PLANNING ACTS
23 JUL 1984
PLANS ~~NOT APPROVED~~ APPROVED
ON BEHALF OF THE COUNCIL

(R1)
K12/17/11/8400480
8470070
(R1)

20 MORNINGTON
CRESCENT NW1
EXISTING

DAVID PARRY ASSOCIATES
199 · 200 UPPER STREET LONDON N1

ARCHITECTS
01 359 6131

SCALE 1:100
DATE MAY 1983
DRAWN E.C.

1203

01

DWG NO