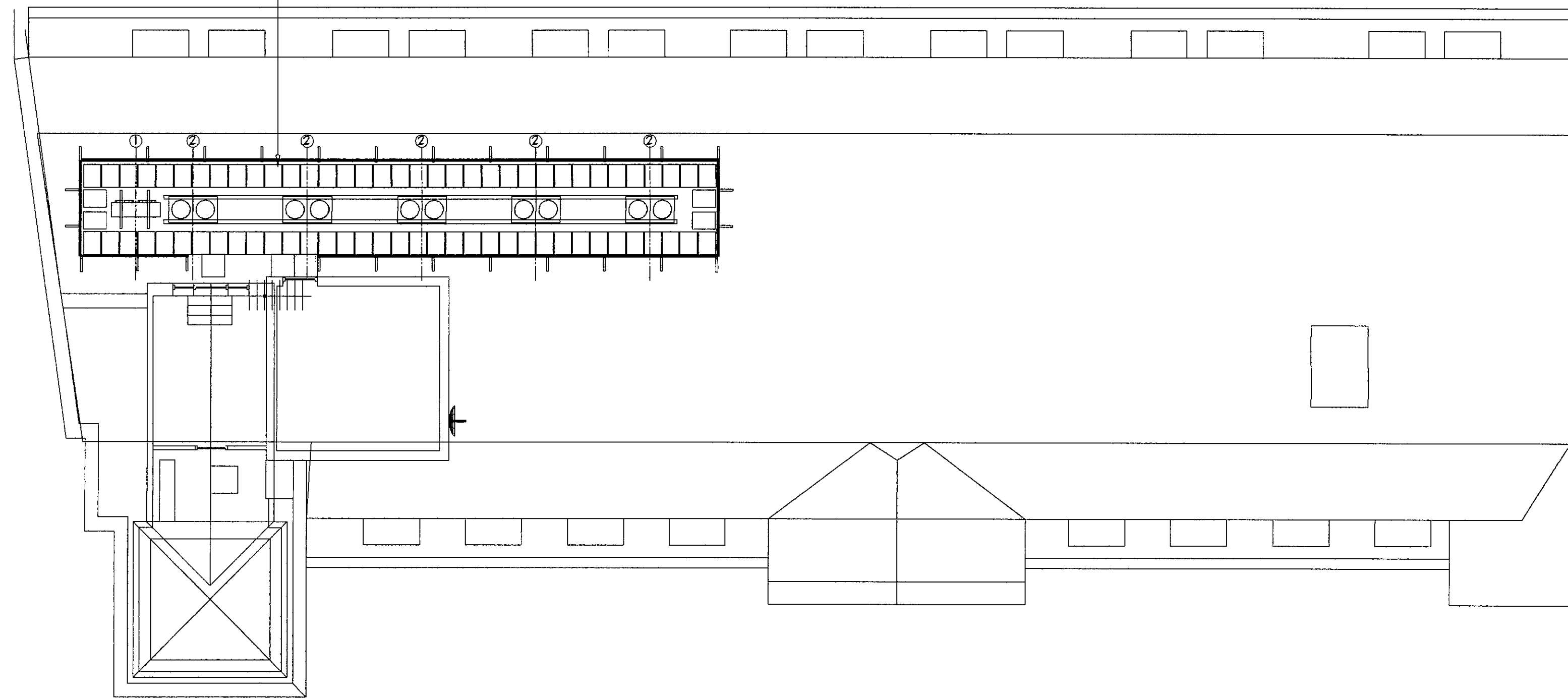
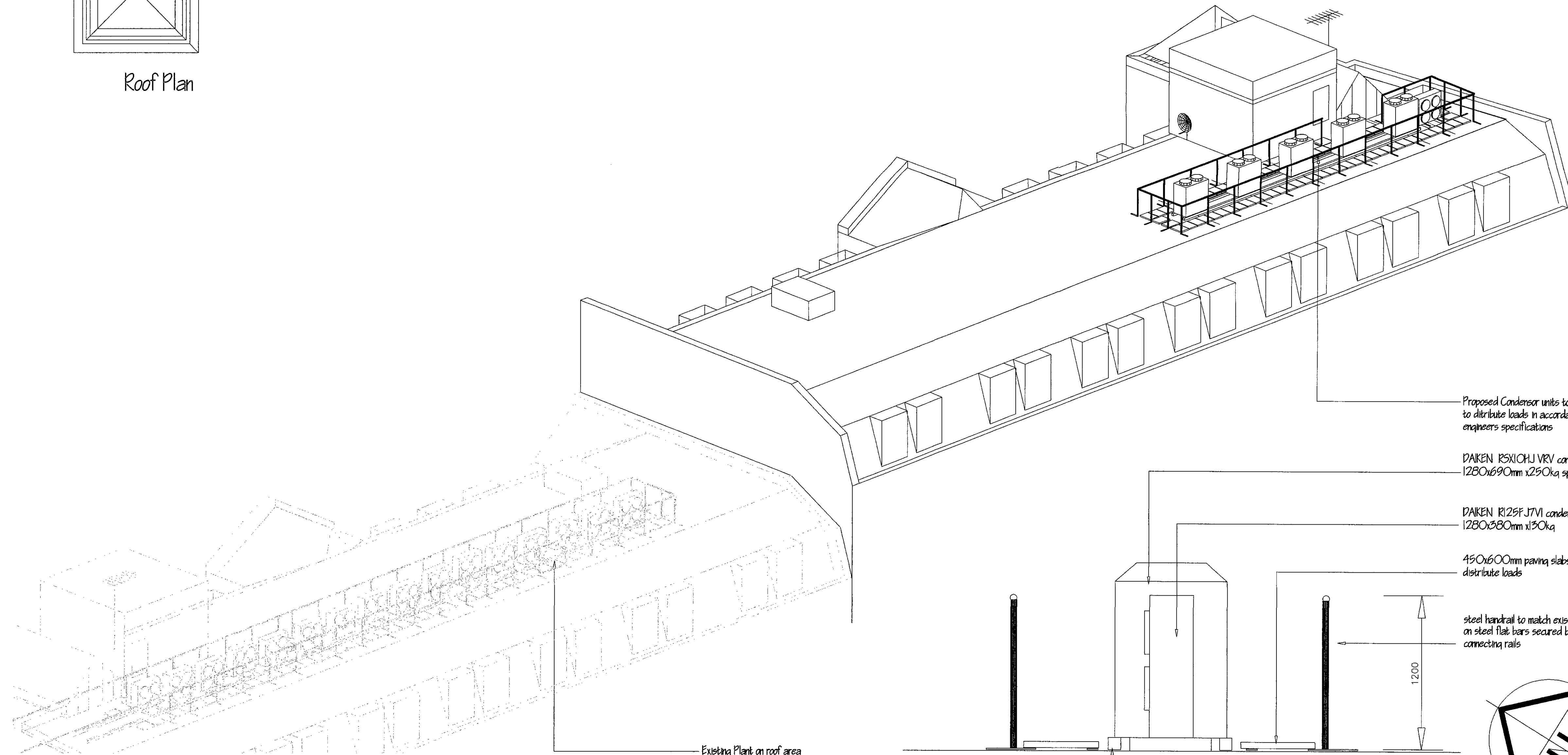


Condensor units to be spaced on roof area to distribute loads in accordance with structural engineers specifications



Roof Plan

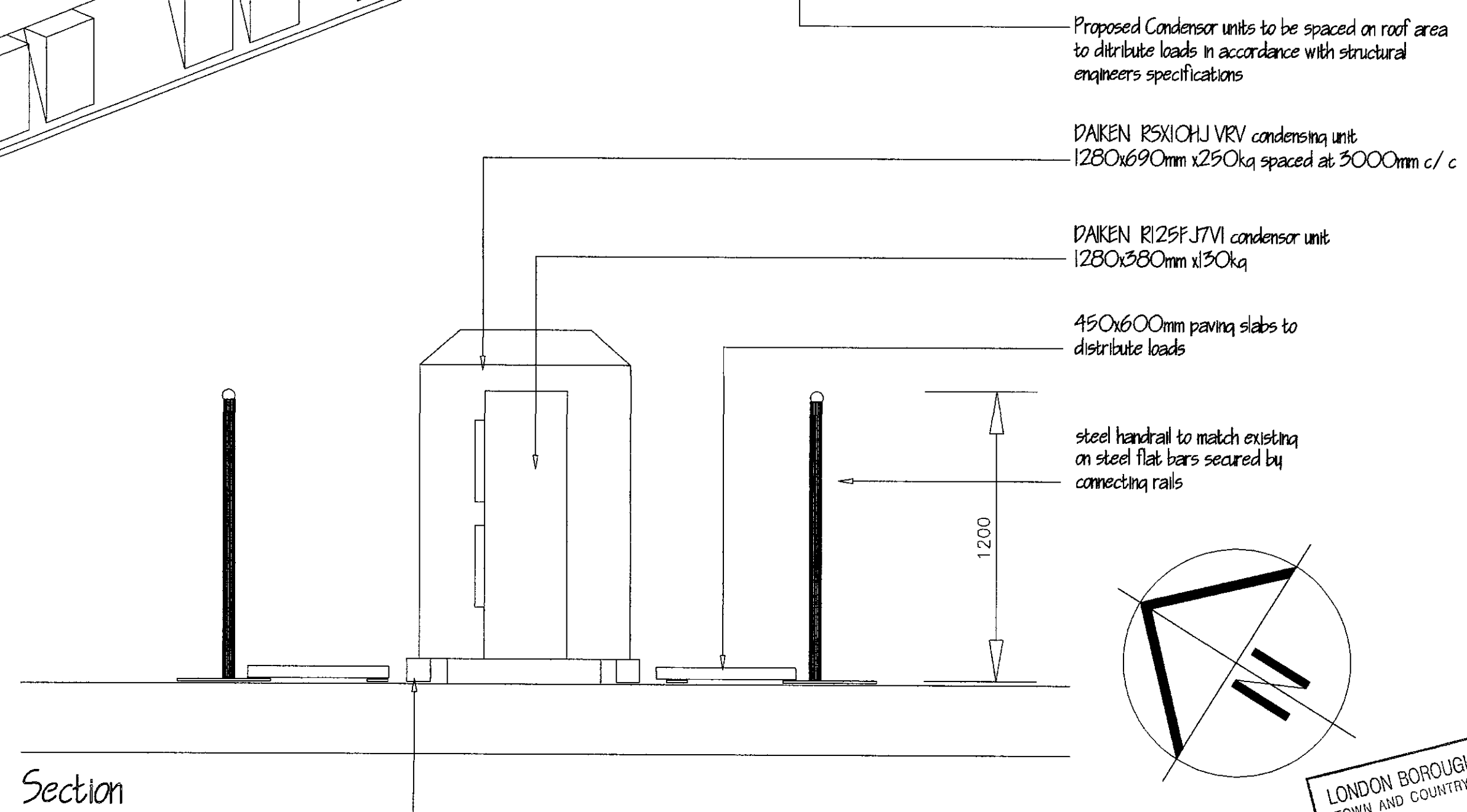


3d- view

Existing Plant on roof area to 185 Eversholt Street

100x100mm Piarock Mounting Blocks

Section



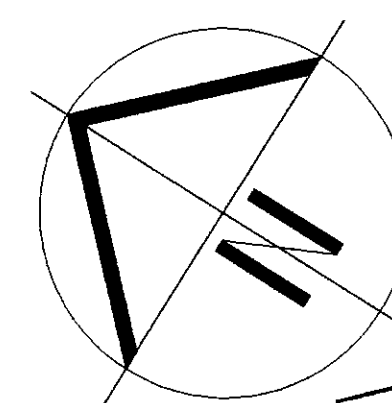
Proposed Condensor units to be spaced on roof area to distribute loads in accordance with structural engineers specifications

DAKEN R5X10HJ VRV condensing unit
1280x690mm x290kg spaced at 3000mm c/c

DAKEN R125FJ7VI condensor unit
1280x380mm x130kg

450x600mm paving slabs to
distribute loads

steel handrail to match existing
on steel flat bars secured by
connecting rails



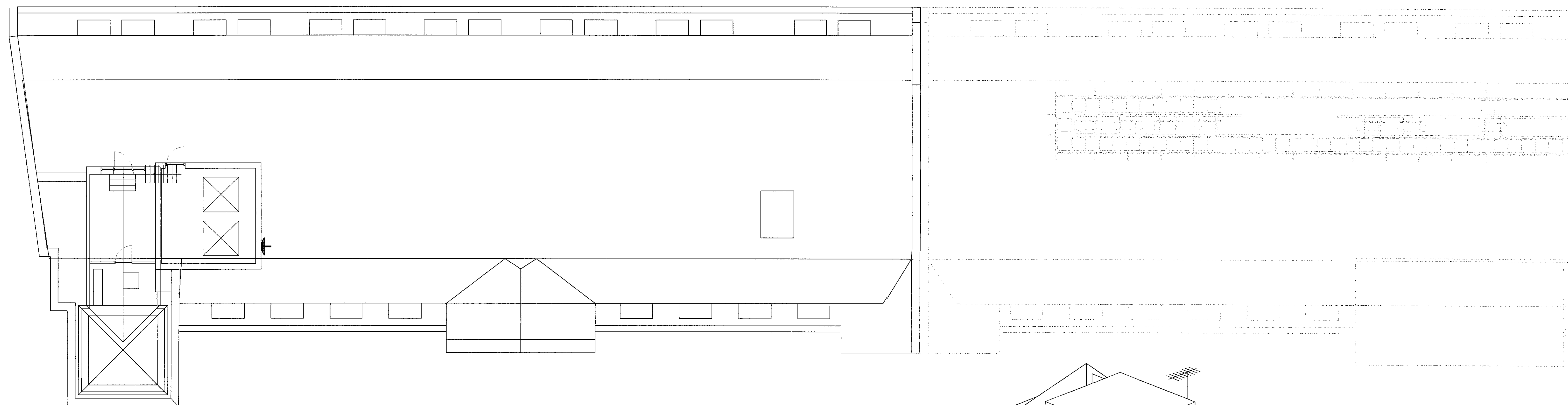
19700572

19700573

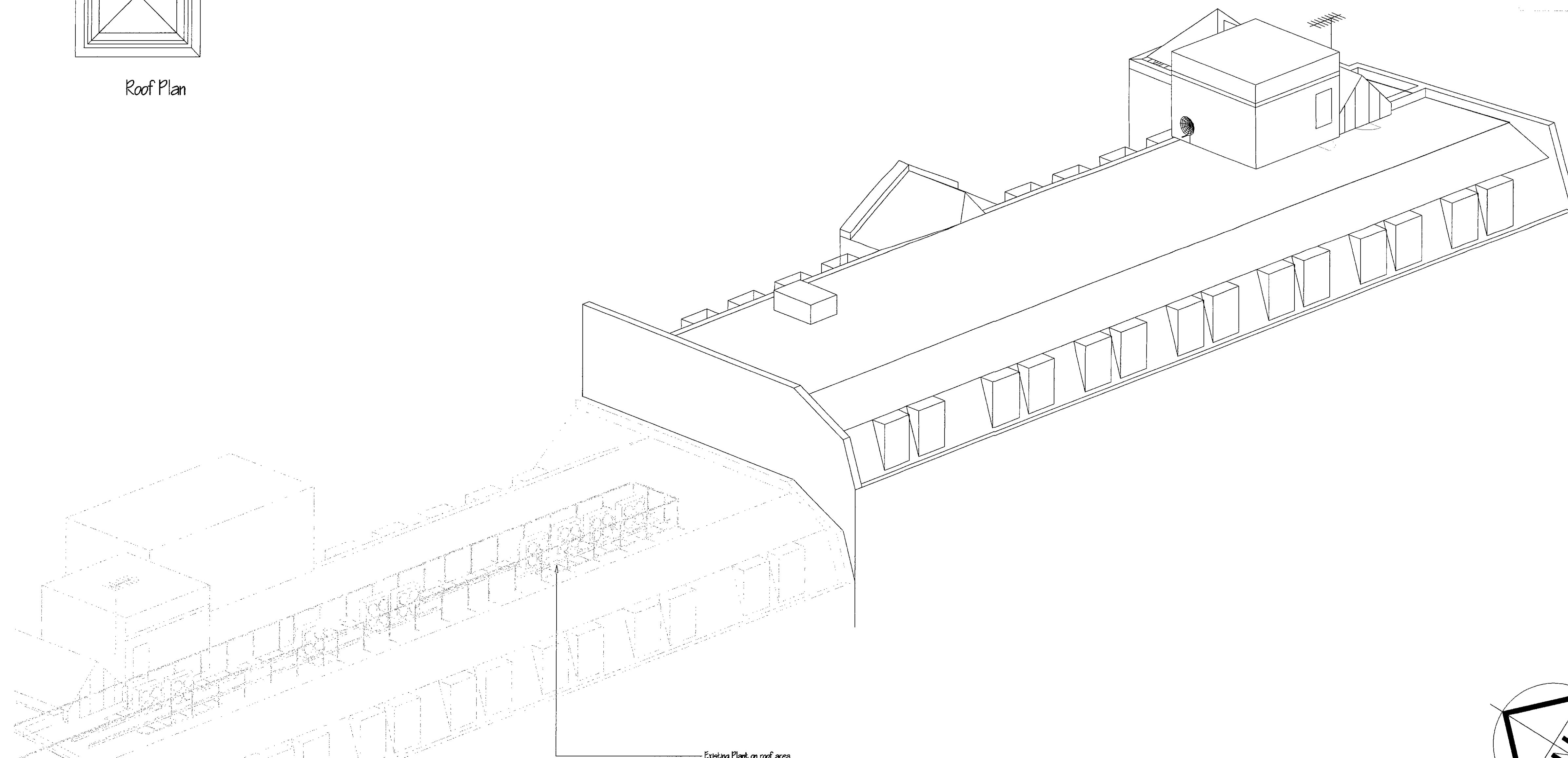
14 JUL 1997

Rev - B 10/7/97 -SPACE CONDENSOR UNITS
Rev - A 7/7/97 -CHANGE CONDENSOR UNITS

Client Landmark Education Corp	
Site Address 203 Eversholt St London NW1	
Drawing Title ROOF - proposed installation of condensor units	
Scale 1:100	Drawn By AV
Dwg No. LAN787a	Date 08/07/97
LONDON BOROUGH OF CAMDEN TOWN AND COUNTRY PLANNING ACTS 31 OCT 1997 PLANS APPROVED ON BEHALF OF THE COUNCIL	
PRICE WALTON INTERIORS LTD 16 Lamb Street London, E1 6SL Tel 01753 255 000 Fax 01753 255 008 Plans for indication only	

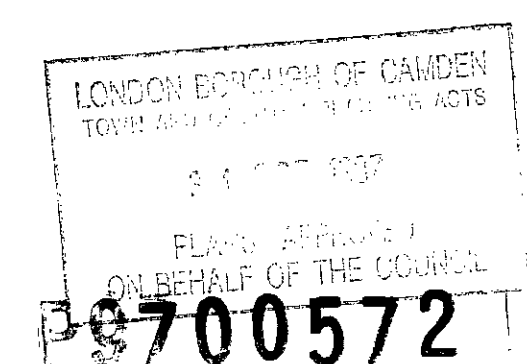


Roof Plan

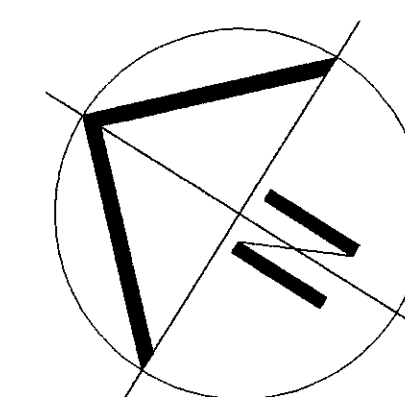


3d view

Existing Plant on roof area
to 185 Eversholt Street



9700573



Client Landmark Education Corp	
Site Address 203 Eversholt St London NW1	
Drawing Title EXISTING ROOF LAYOUT	
Scale 1:100	Drawn By AV
Drawn By LAN787 B	Date 08/07/91
<small>PRICE: WALTON INTERIORS LTD 15 Lamb Street London, E1 6SE Tel: 0171-252 1000 Fax: 0171-252 1001 Plans for information only.</small>	