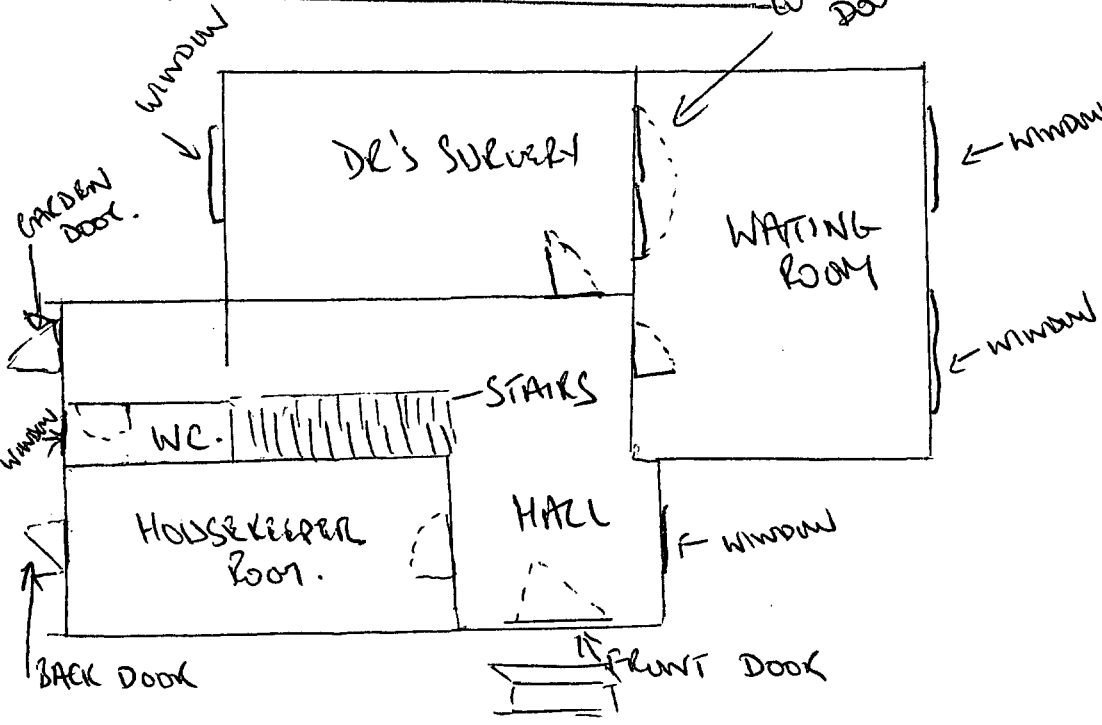


CTP/K12/12/4/24484

CONNECTING DOUBLE DOORS. 3.



Present Use AS ABOVE.

- PROPOSE :-
- HOUSEKEEPERS ROOM - KITCHEN/DINING ROOM
 - WAITING ROOM - LIVING ROOM 1
 - LIVING ROOM 2
 - THE STAIRS.
 - W.C. / SHOWER

LONDON BOROUGH OF CAMDEN
 TOWN AND COUNTRY PLANNING ACTS
 HALL
 12 JUL 1977
 PLANS APPROVED
 ON BEHALF OF THE COUNCIL

CASE COPY