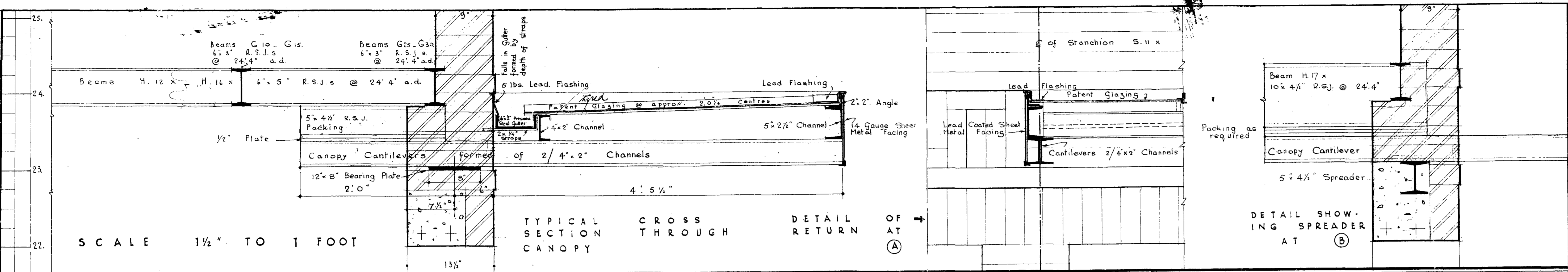


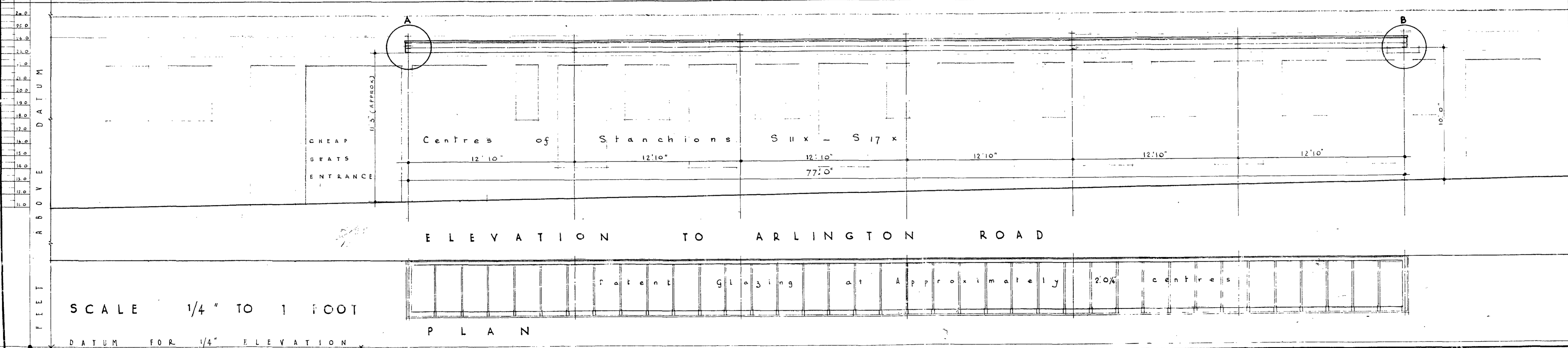
ARCHITECTS DEPT
 10001.1936-145631



SCALE 1/2" TO 1 FOOT

TYPICAL CROSS SECTION THROUGH CANOPY AT (A)

DETAIL SHOWING SPREADER AT (B)



ELEVATION TO ARLINGTON ROAD

CROSS SECTION

SCALE 1/4" TO 1 FOOT

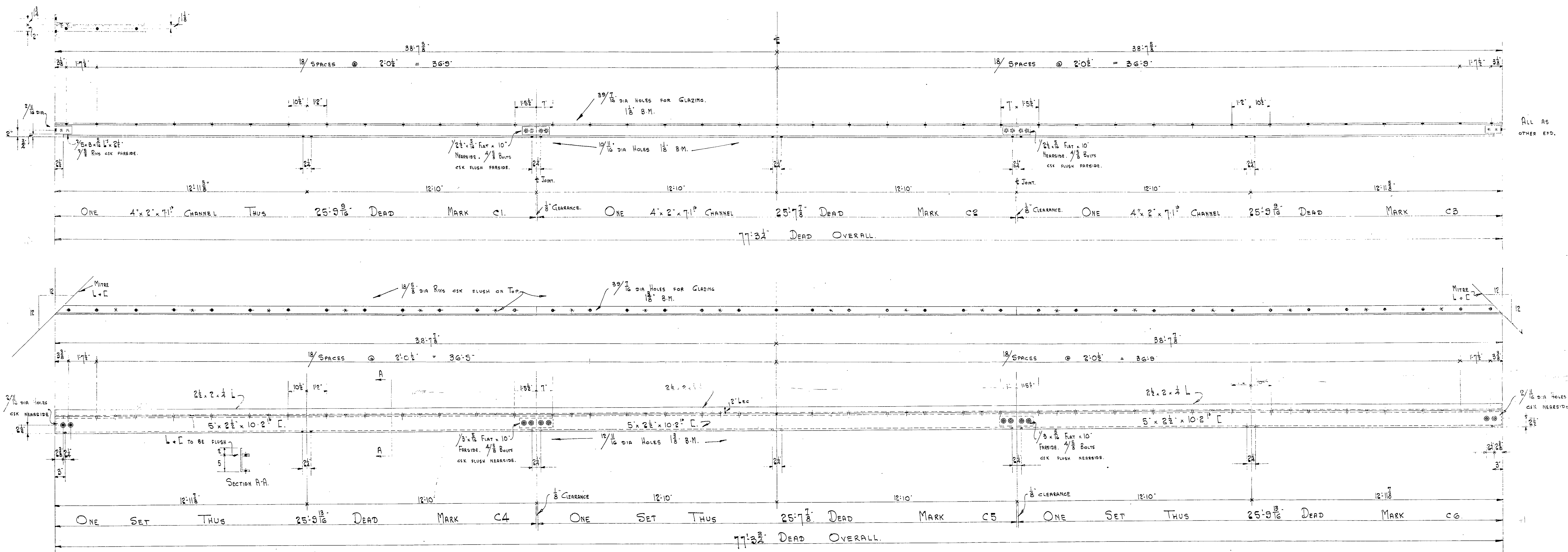
PLAN

REGENTS PARK

PROPOSED GAUMONT PICTURE THEATRE FOR DENMAN
 CONSTRUCTION COMPANY LTD.
 DETAILS OF CANOPY TO ARLINGTON ROAD FRONTAGE

MAY 23. 36.
 40" x 15"
 F. A. W.

W. E. TRENT F.R.I.B.A.
 Architect.
 123. Regent St. W. 1



ALL AS
OTHER END.

1/2" DIA HOLES
CSK NEAR SIDE

ALL HOLES, RVS + BOLTS AS STATED.
PAINT ONE COAT.

DRAWING N^o 77.
SCALE / = 1 FOOT
DATE 20th May 1936 C.P.F.

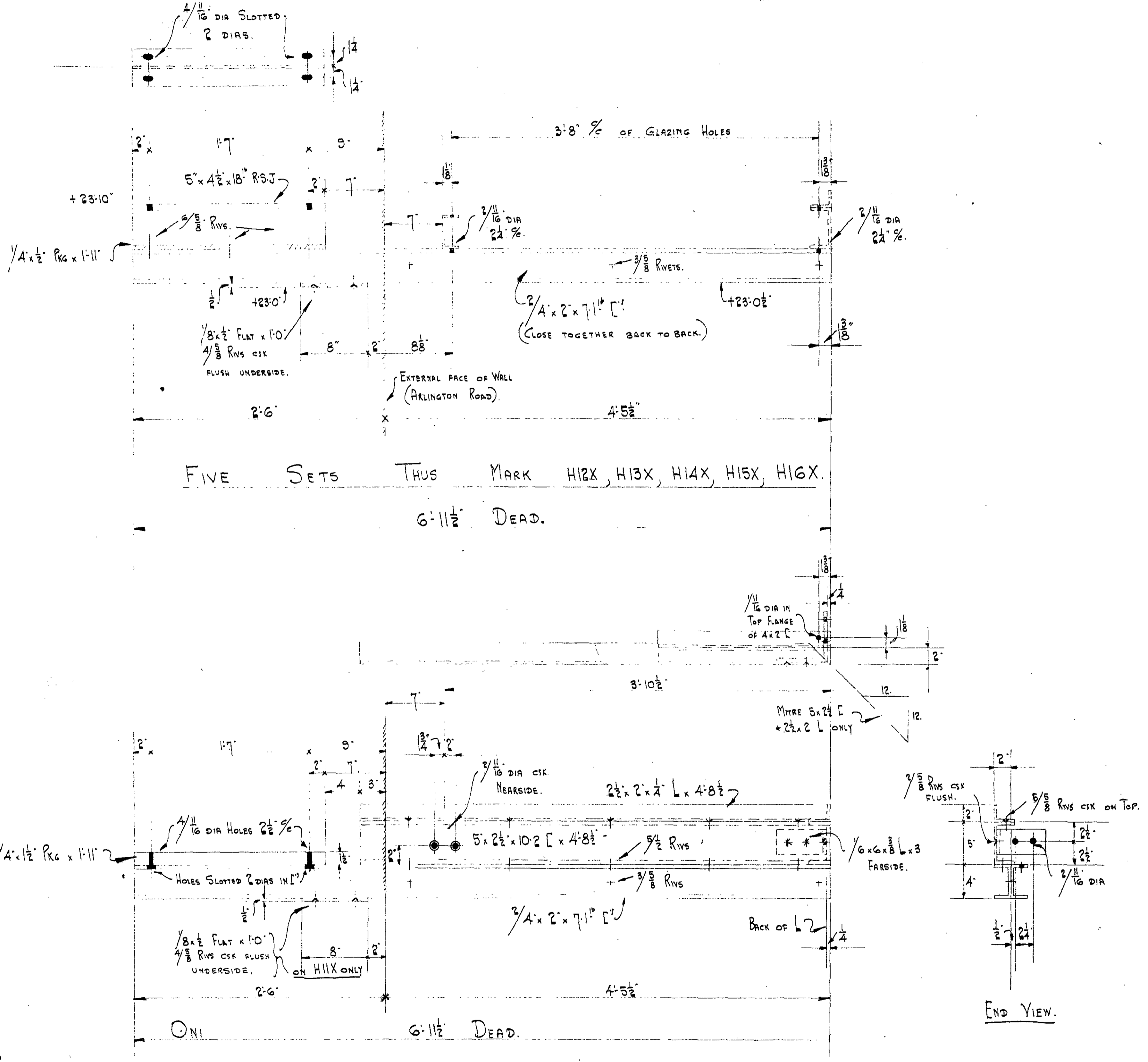
MATTW. T. SHAW & Co. LTD.,
CONSTRUCTIONAL ENGINEERS,
MILLWALL, E.14.

ORDER N^o 8520
REF. N^o

GAUMONT PALACE.
REGENT'S PARK.

ARLINGTON ROAD CANOPY.

ARCHITECTS DEPT
17, DEC. 1936 - 180455



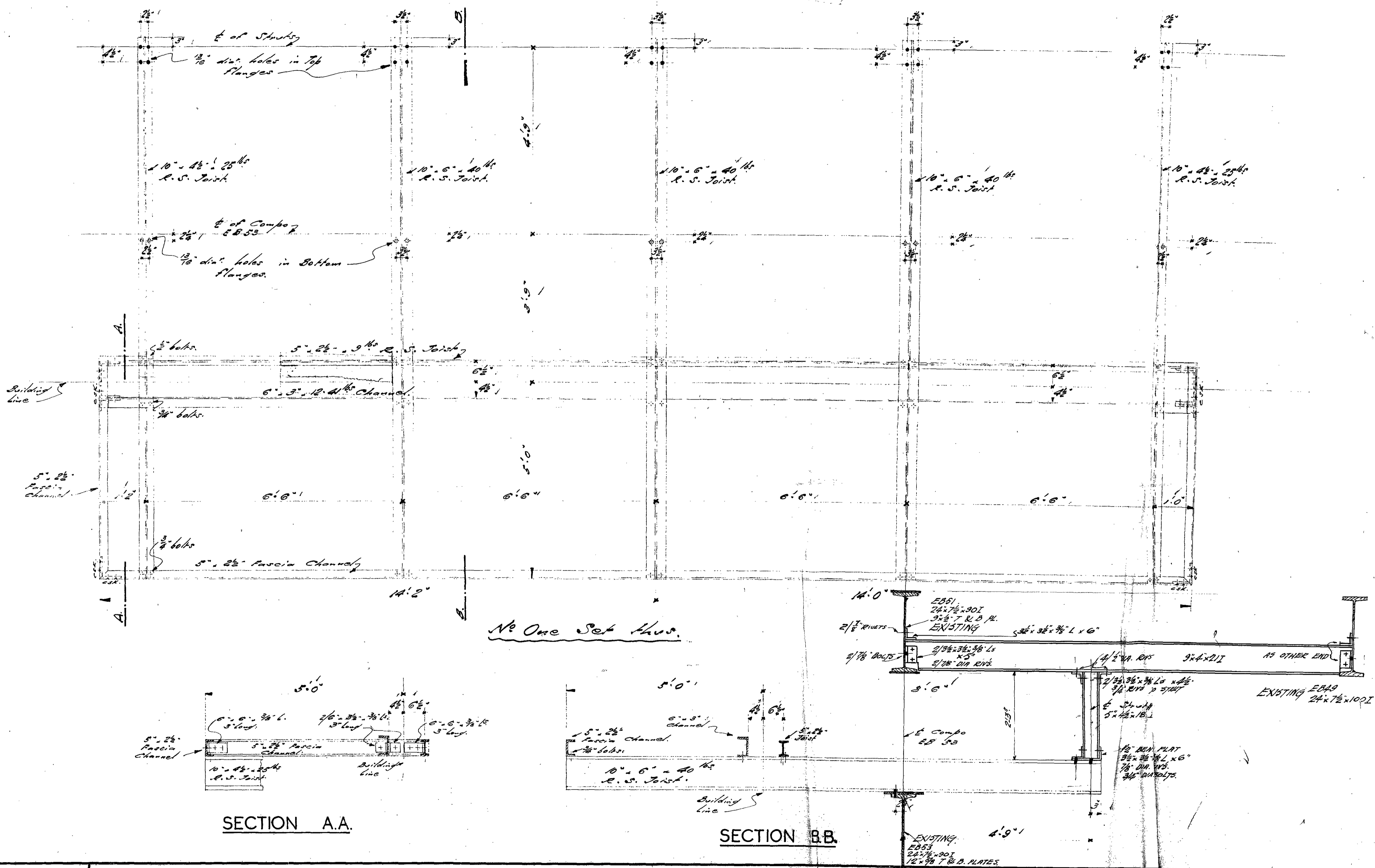
FIVE SETS THUS MARK H12X, H13X, H14X, H15X, H16X.
6'-11 1/2" DEAD.

ONE SET THUS AS DRAWN MARK H11X.
ONE SET TO OTHER HAND WITHOUT BEARING PLATE MARK H17X.

22/3, 1/3, 1/3
4 1/2 TW.
5 1/2 x 1 1/2 CSK.
3 1/2 x 1 1/2 + 1 1/2 TW
2' x 1 1/2 + 4 TW

ORDER No 8520	GAUMONT PALACE REGENTS PARK	ALL HOLES, RIVS + BOLTS AS STATED PAINT ONE COAT.	DRAWING No 76. SCALE 1 1/2" = 1 FOOT.	MATTW. T. SHAW & Co. LTD., CONSTRUCTIONAL ENGINEERS, Head Office & Works, MILLWALL, E.14 ALSO 52 GROSVENOR GARDENS, S.W.1.
REF. No	ARLINGTON ROAD CANOPY	DATE 29 TH May 1936 C.R.F.		

L.C.C.
ARCHITECTS DEPT
17 DEC. 1936 - 180433



SECTION A.A.

SECTION B.B.

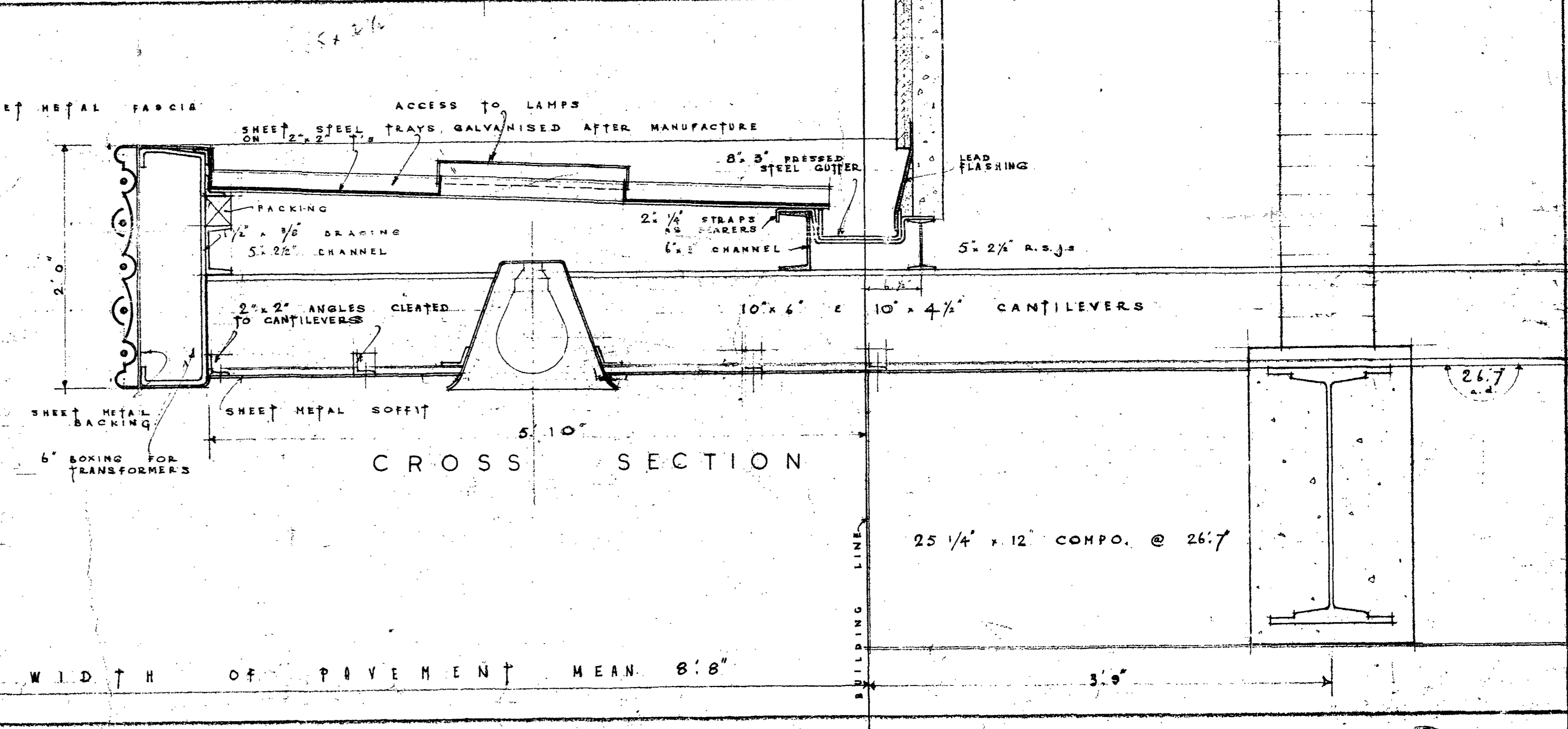
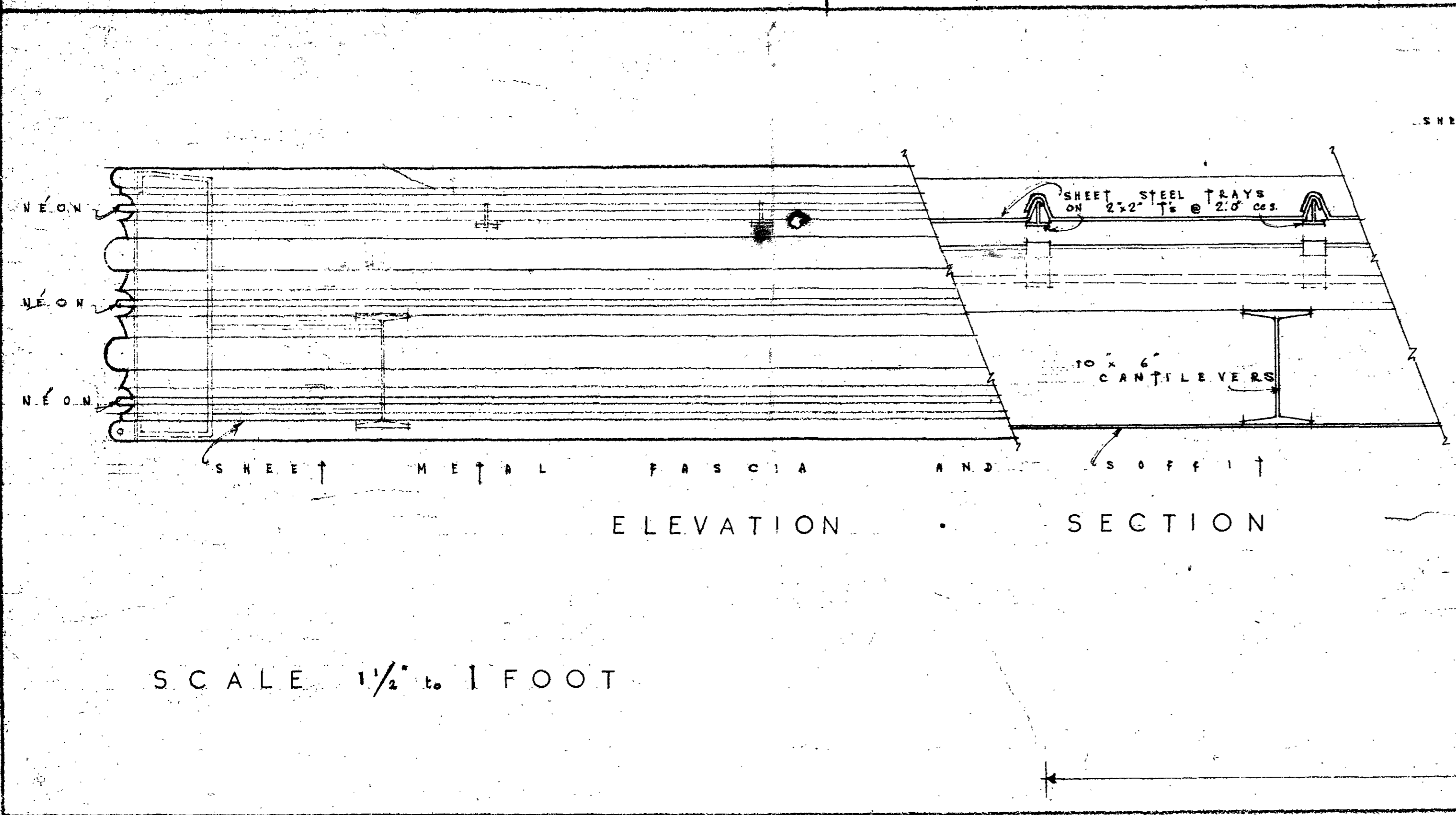
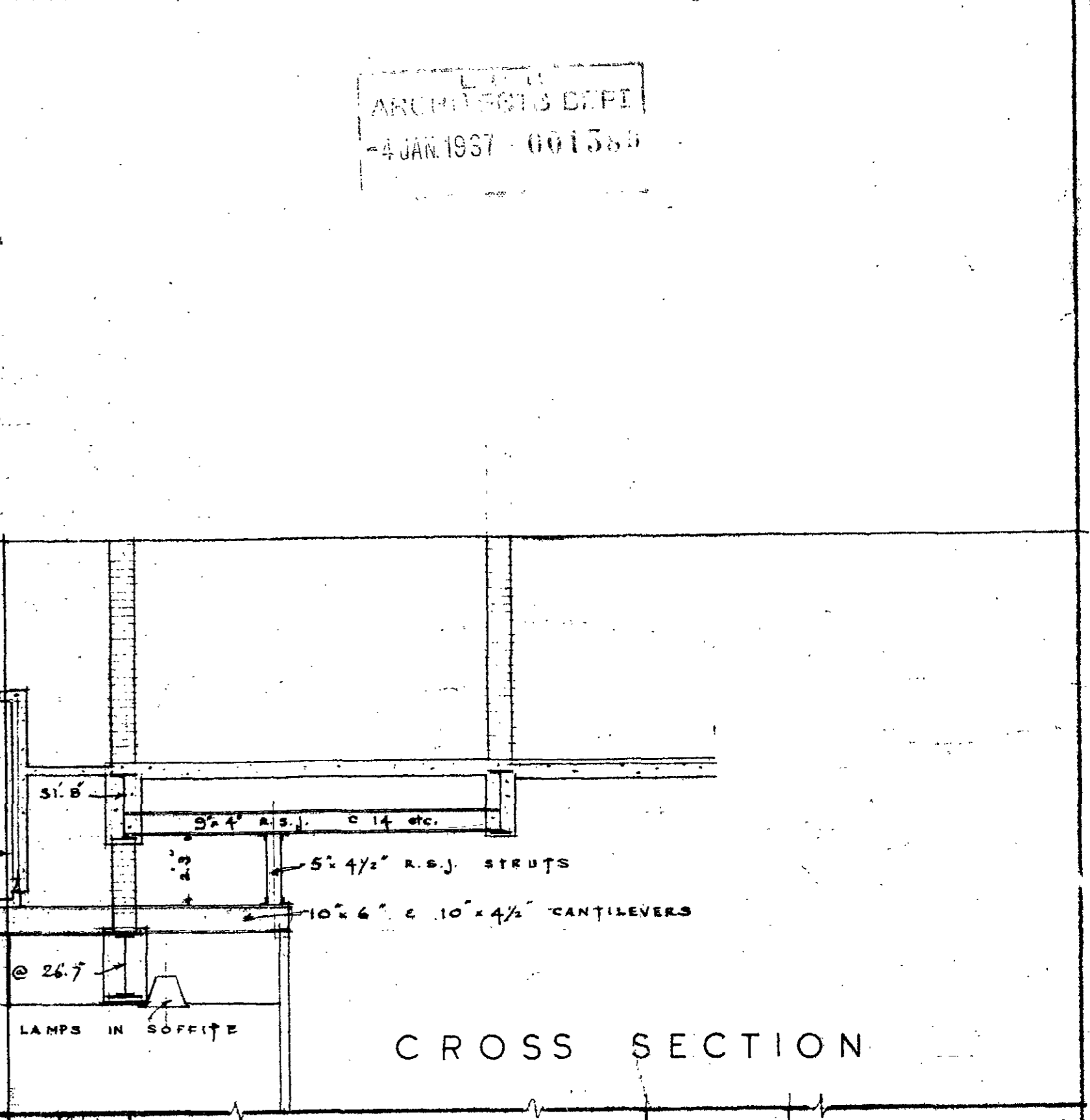
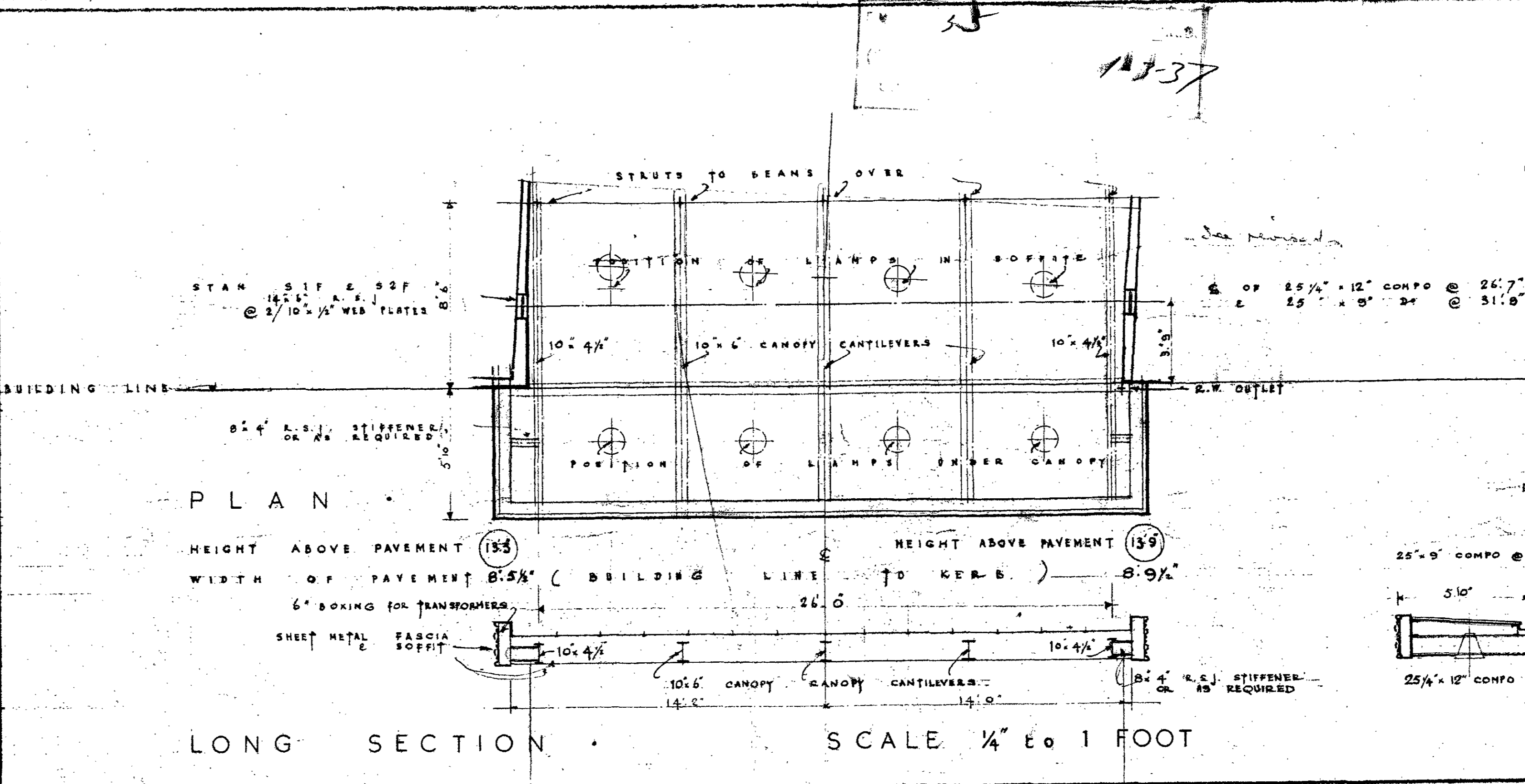
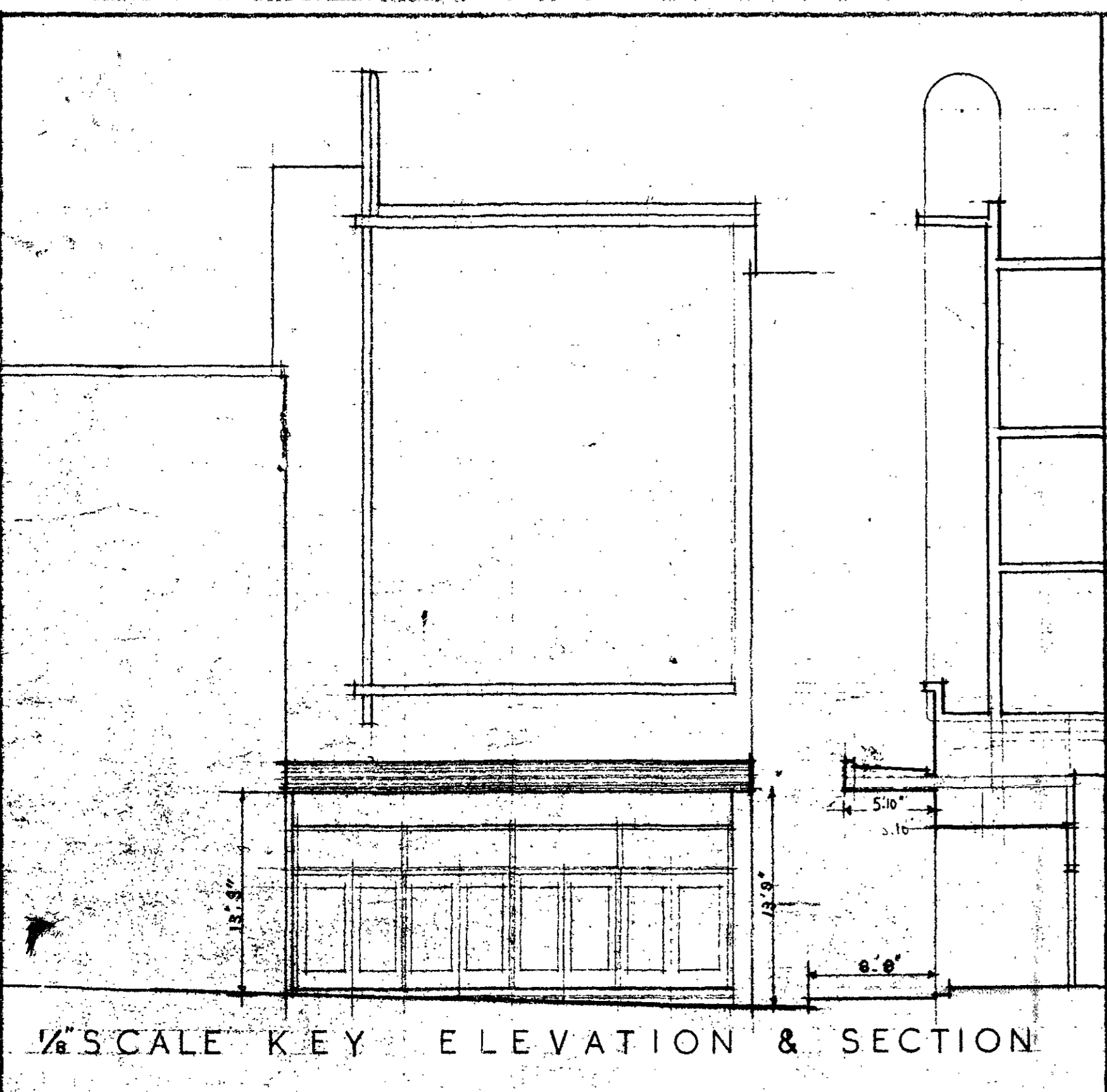
ORDER No 8520
REF. No

GAUMONT PALACE. REGENT'S PARK.

DRAWING No 185
SCALE 3/4" = 1 FOOT
DATE Nov 24th 1936

MATTW. T. SHAW & Co. LTD.
CONSTRUCTIONAL ENGINEERS,
Head Office & Works, MILLWALL, E.14
ALSO 52 GROSVENOR GARDENS, S.W. 1.

ARCHITECTS DEPT
4 JAN 1937 001385



REGENTS PARK GAUMONT

DETAILS OF CANOPY TO PARK STREET FRONTAGE

W. E. TRENT F.R.L.B.S.
ARCHITECT
123 Regent St. W. 1.

Oct 13 '36
F.A.M.
40 x 27"