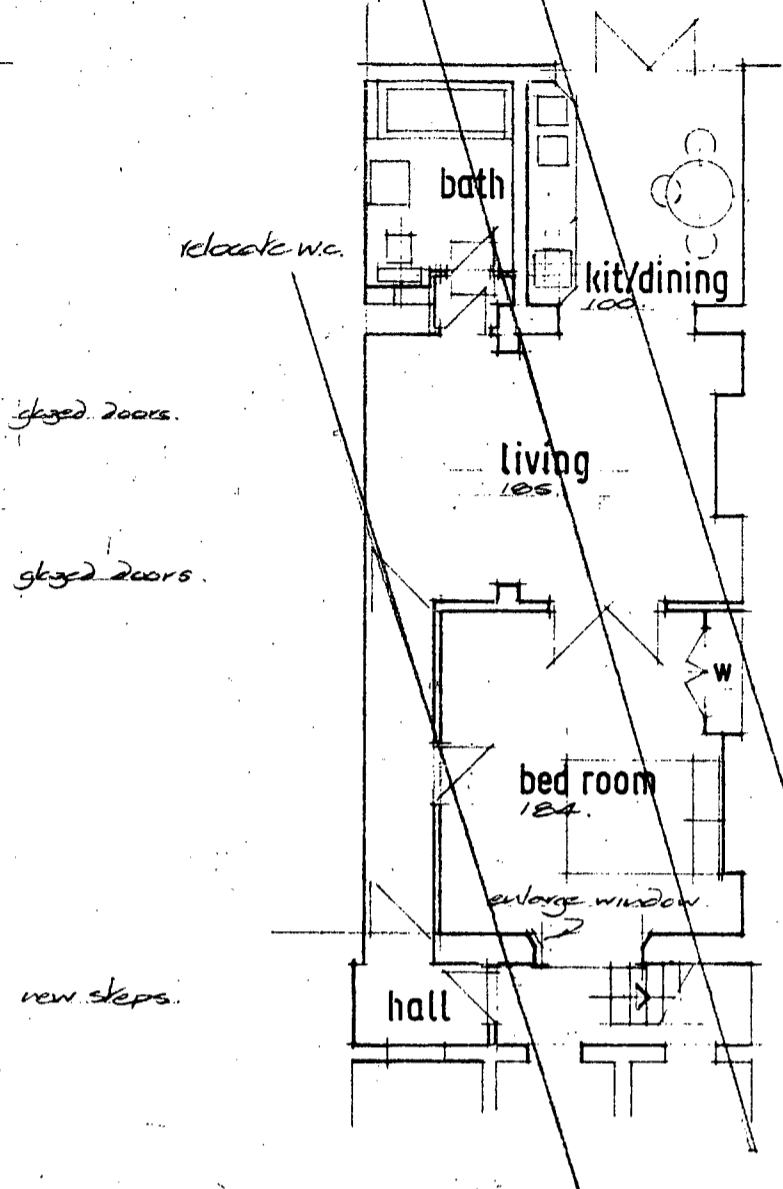
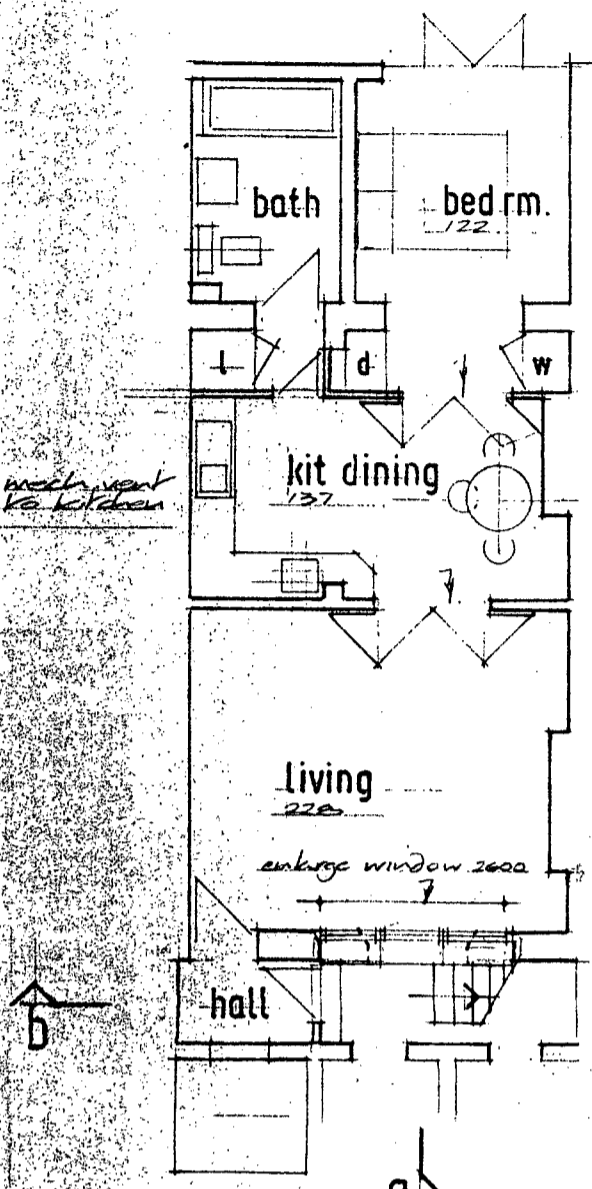


PROPOSALS

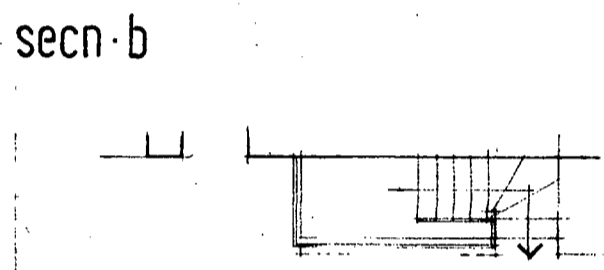
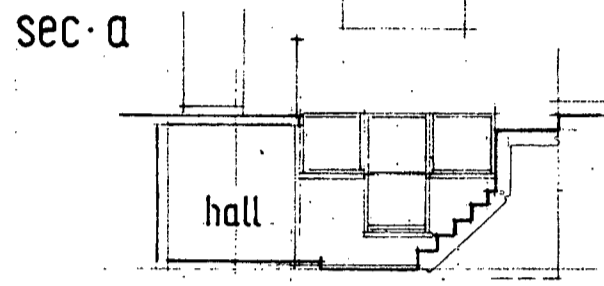
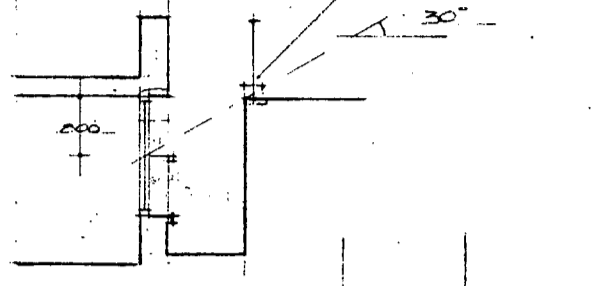
A

B

l linen cupboard
d dressing table
w wardrobe
room areas in sq.

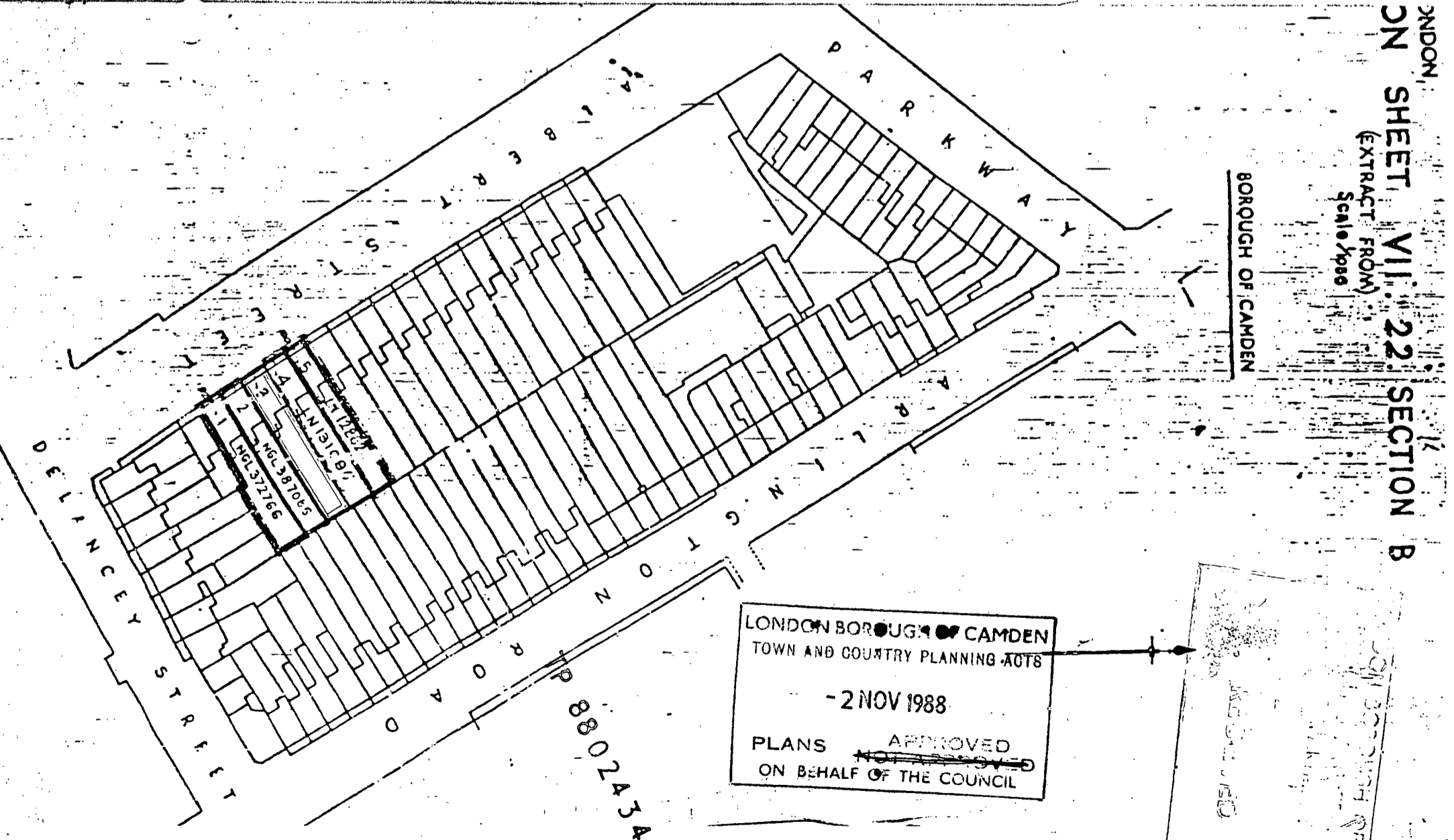


threshold removed; railings extended & set in pavement.



plan at basement

plan at pavement



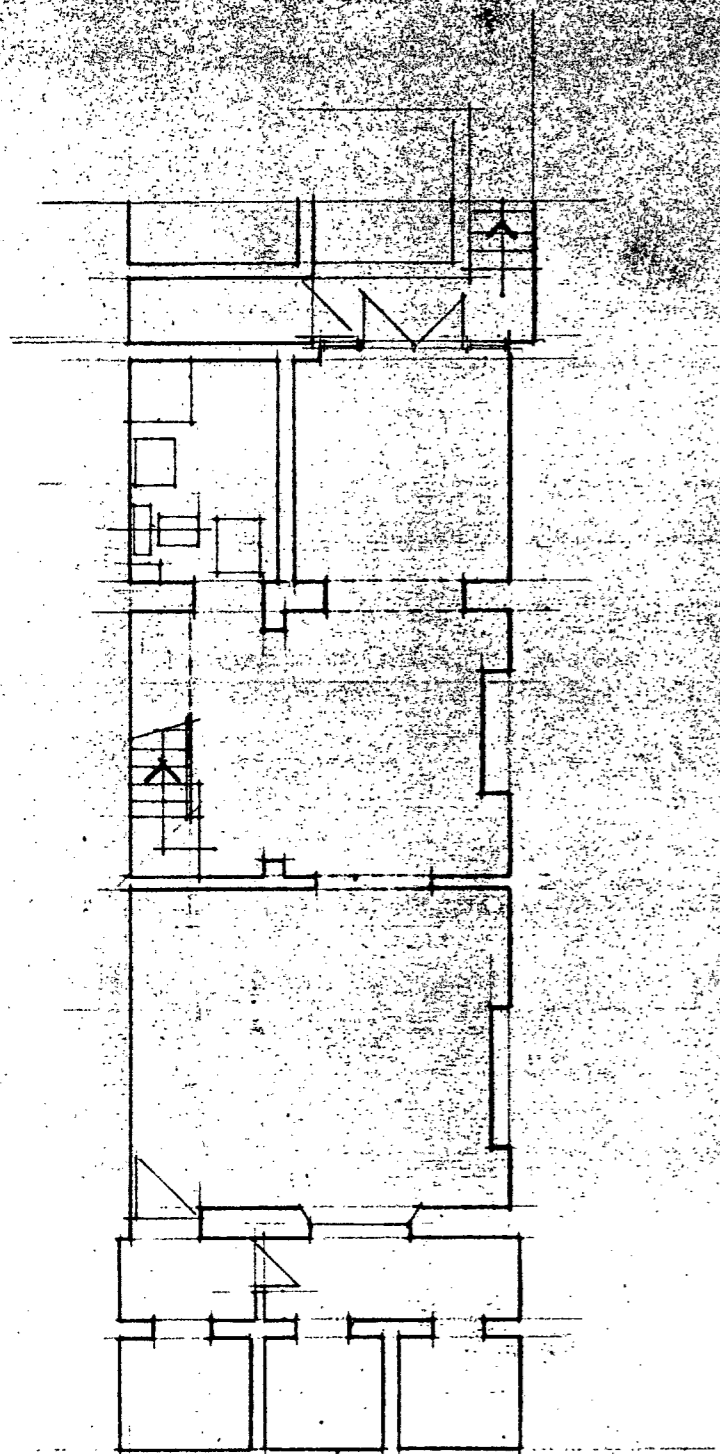
LONDON BOROUGH OF CAMDEN
SHEET VII. 22 SECTION B
(EXTRACT FROM)
Scale 1:500

LONDON BOROUGH OF CAMDEN
TOWN AND COUNTRY PLANNING ACTS
- 2 NOV 1988
PLANS APPROVED
ON BEHALF OF THE COUNCIL

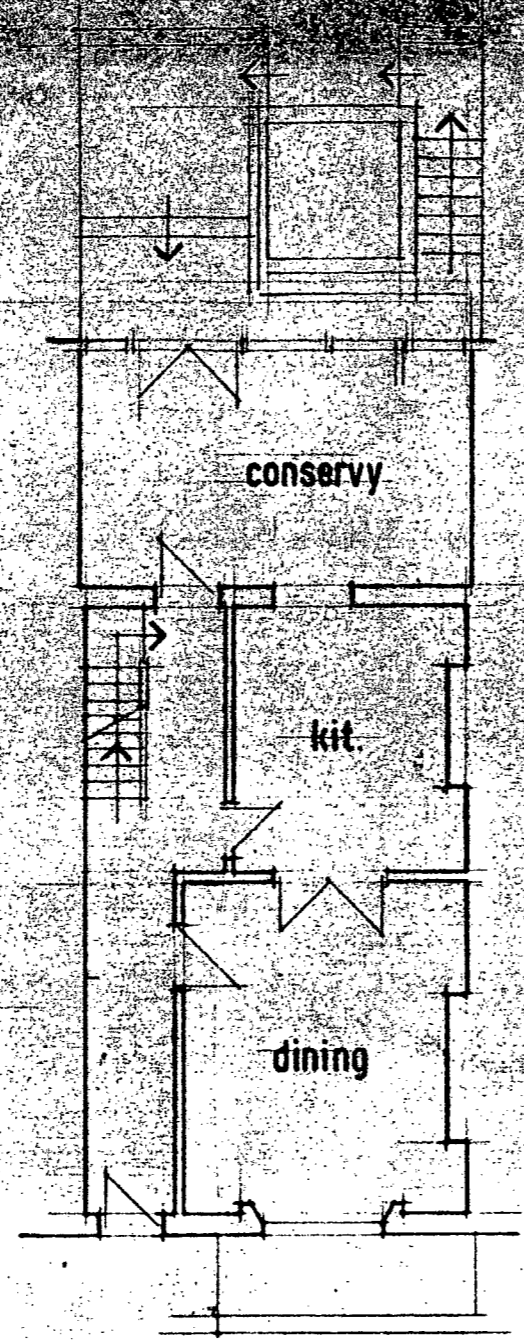
LOCATION PLAN

antony thearle architects 11, primrose gardens london n.w.3. 01-722 3632	scale 1/100	drwg. no. 1	revisions
96, Albert Street, NW1 - Proposed Basement Flat.	date 25.7.88		

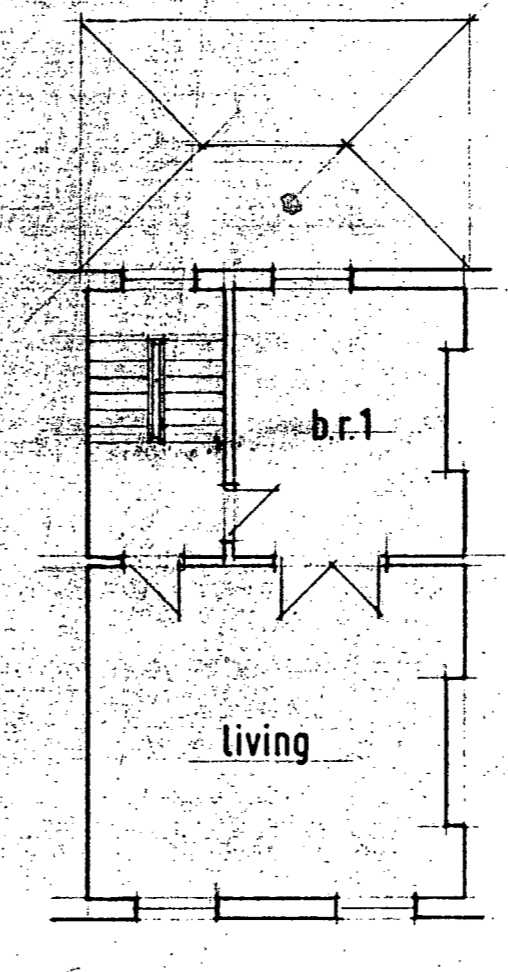
LONDON BOROUGH OF CAMDEN
 PLANNING AND TRANSPORT
 DEPARTMENT
 2 ALBANY
 REGENT STREET



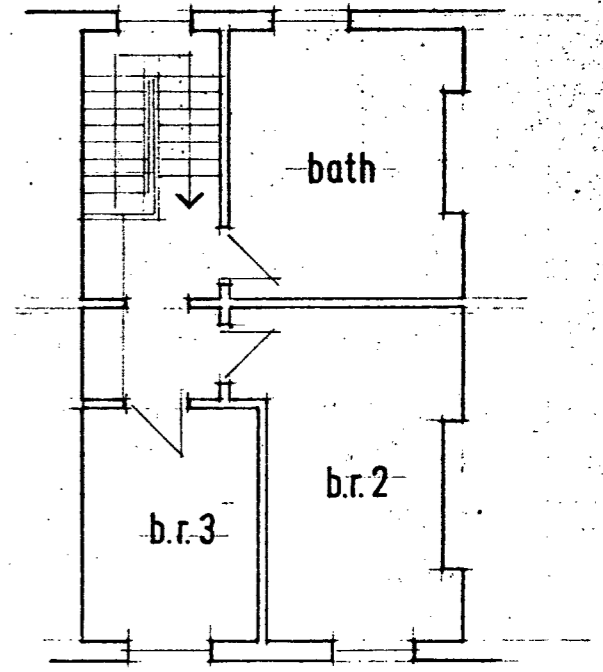
basement



ground



first



second

TP 88.0243A

PLANS AS EXISTING

antony thearle architects 11, primrose gardens london n.w.3. 01-722 3632	scale 1/100	drwg. no. 2.	revisions
96, Albert Street, NW1 - Proposed Basement Flat.	date 27.7.88		