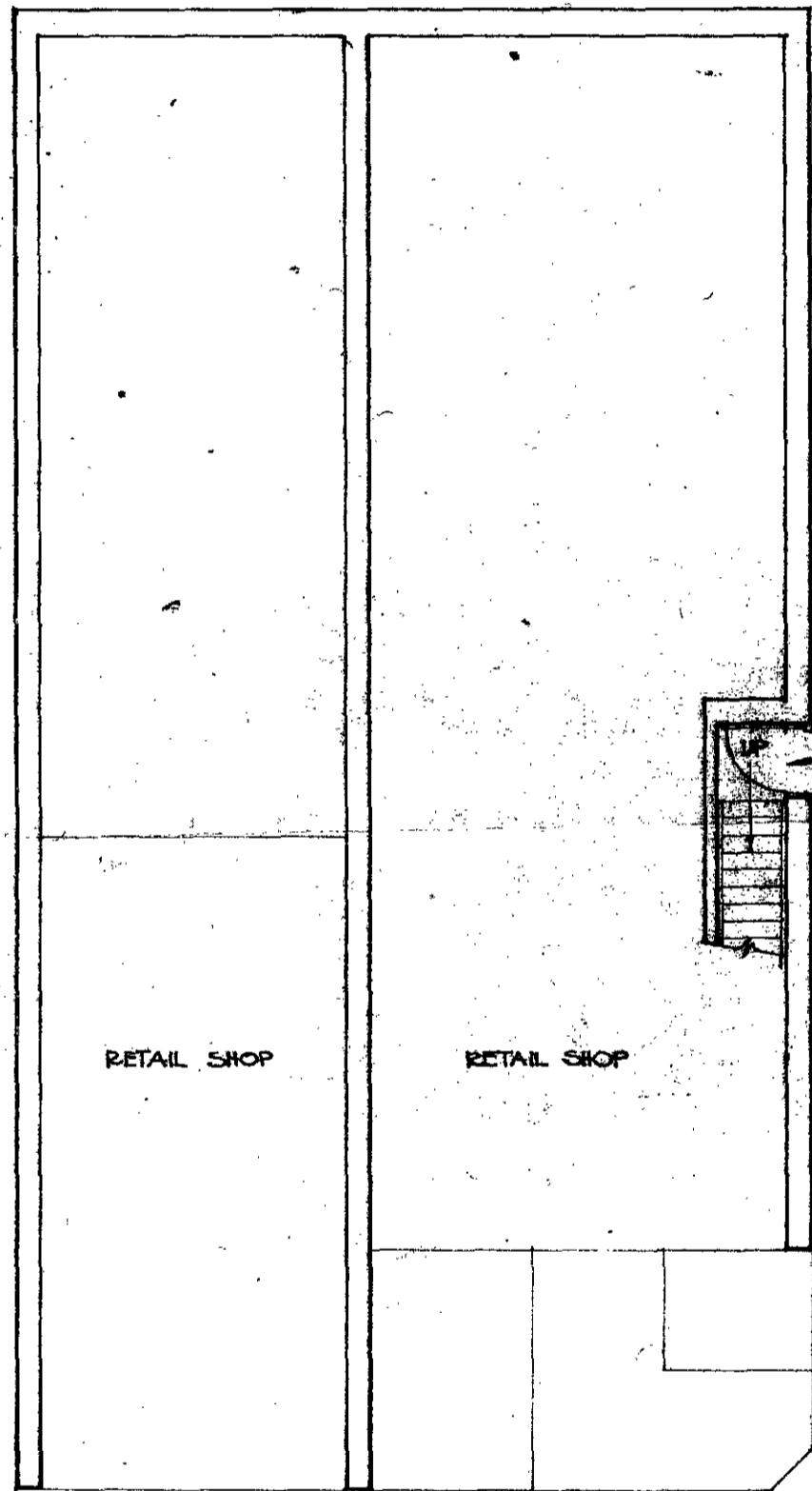
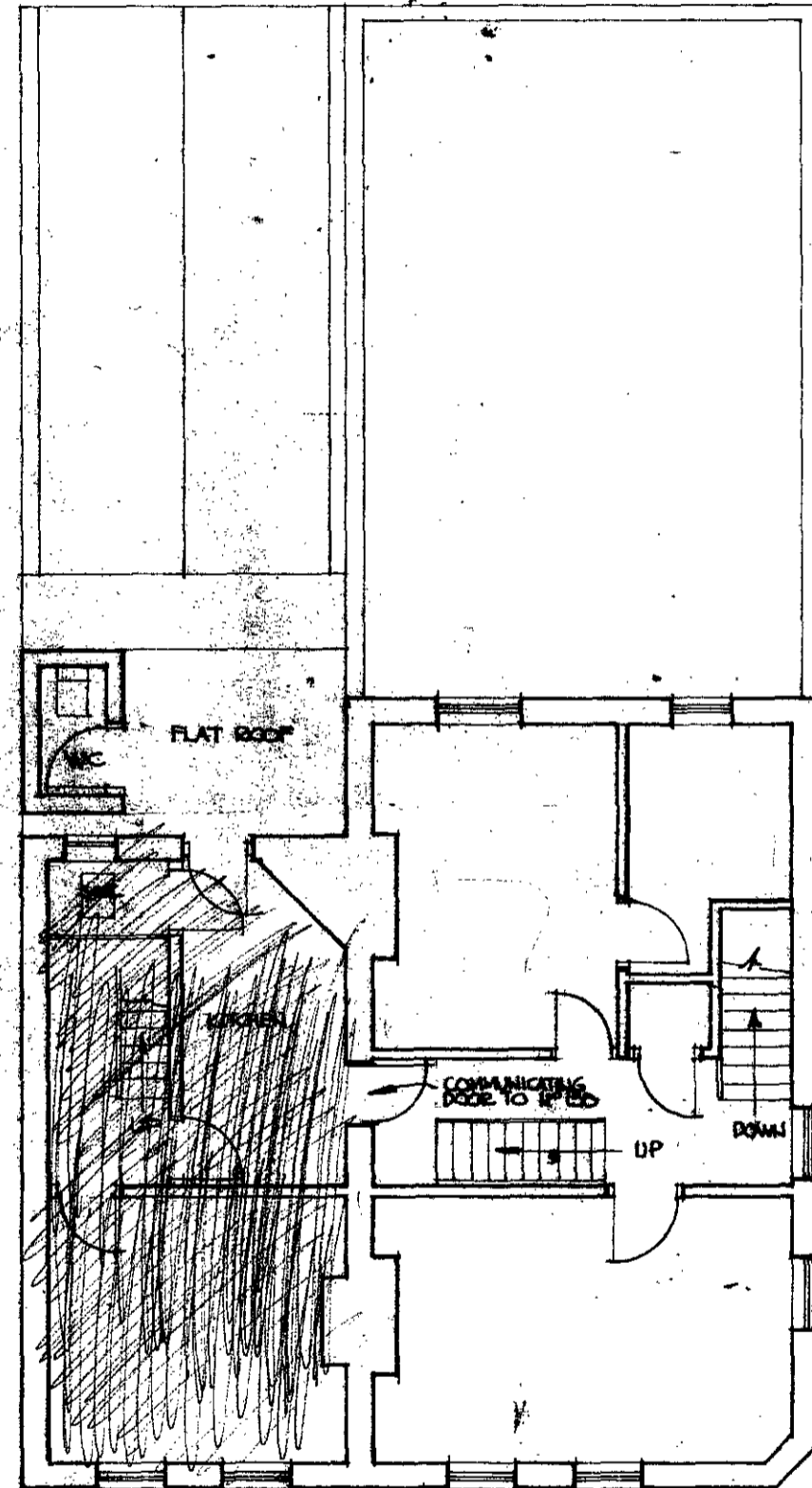


SKETCH PLAN OF NO. 155/7 CAMDEN HIGH ST, NW1.

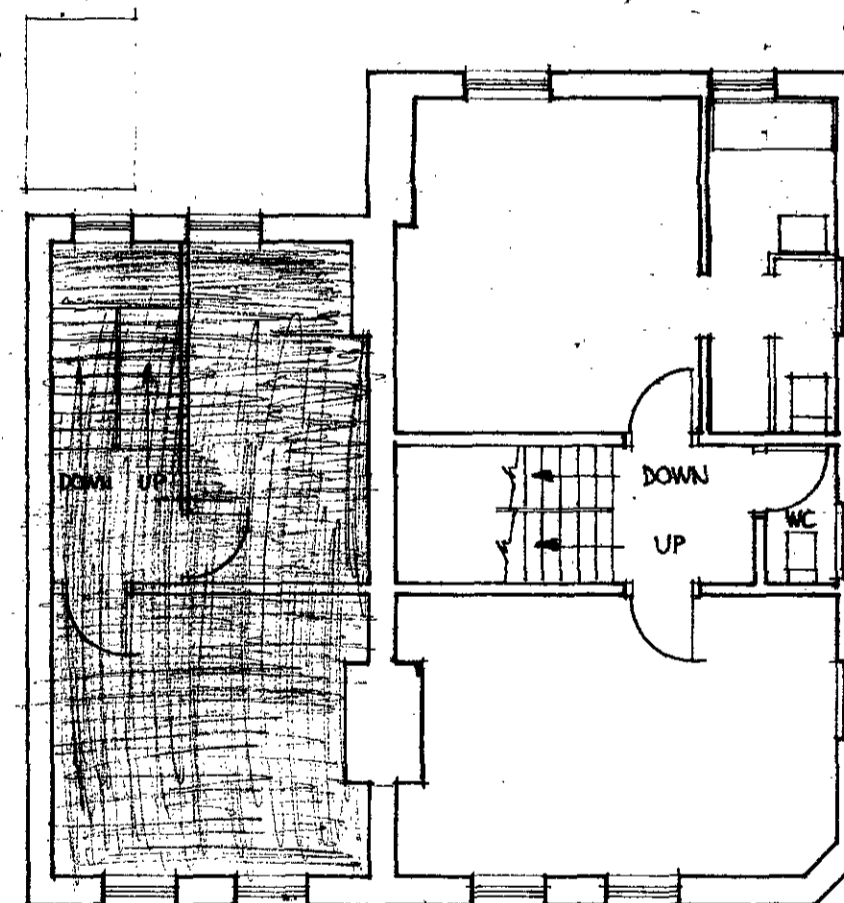
SCALE: ONE INCH EQUALS EIGHT FEET.



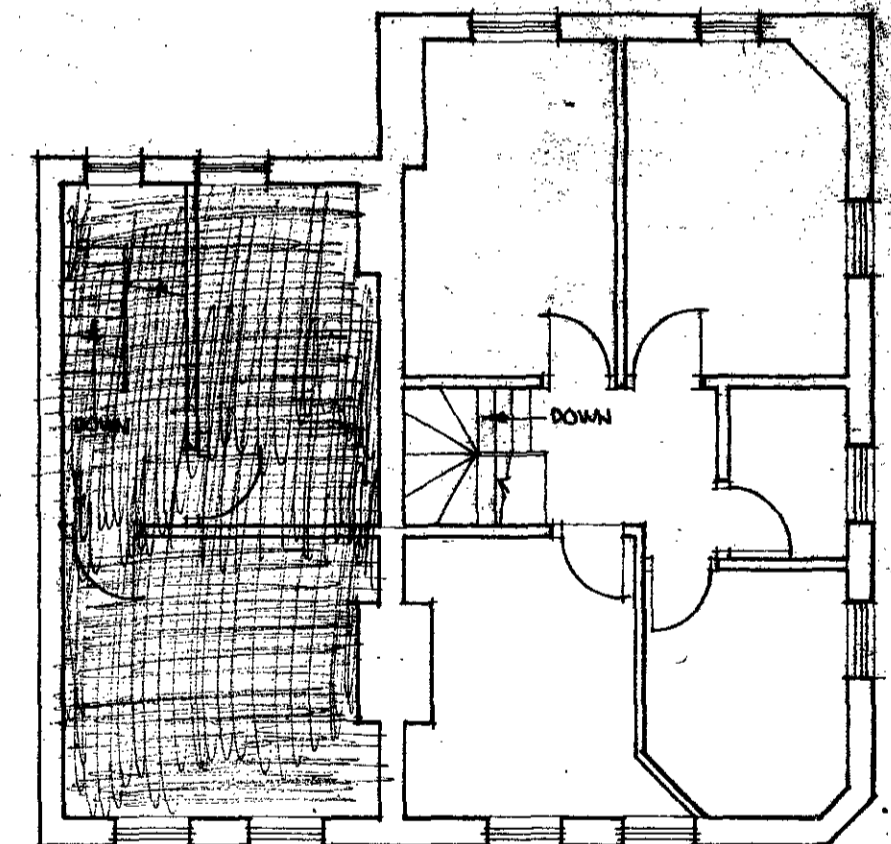
155 157
GROUND FLOOR



155 157
FIRST FLOOR



155 157
SECOND FLOOR



155 157
THIRD FLOOR

LONDON BOROUGH OF CAMDEN
TOWN AND COUNTRY PLANNING ACTS
- 2 MAY 1978
PLANS ~~APPROVED~~ NOT APPROVED
ON BEHALF OF THE COUNCIL
CASE COPY.

CTP/J11/19/6/26063