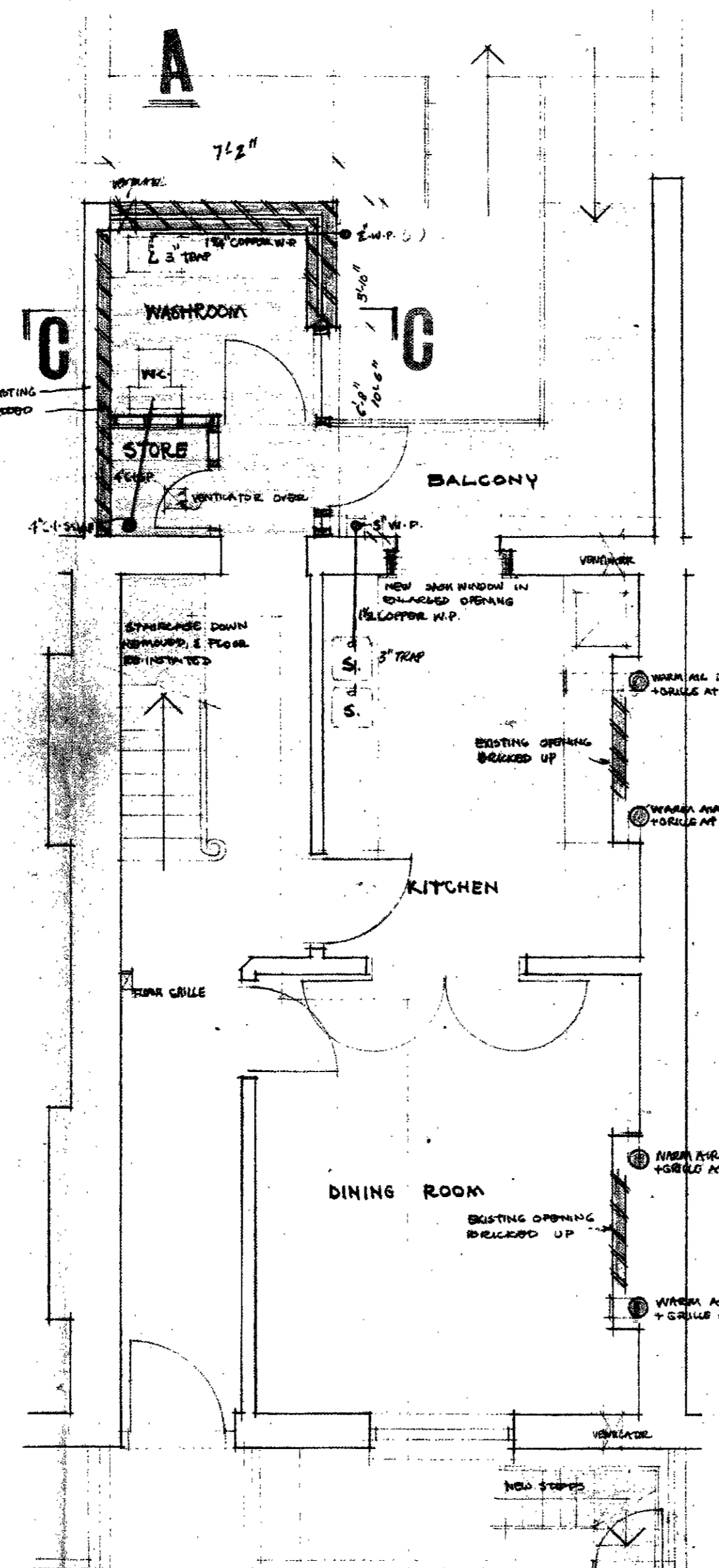
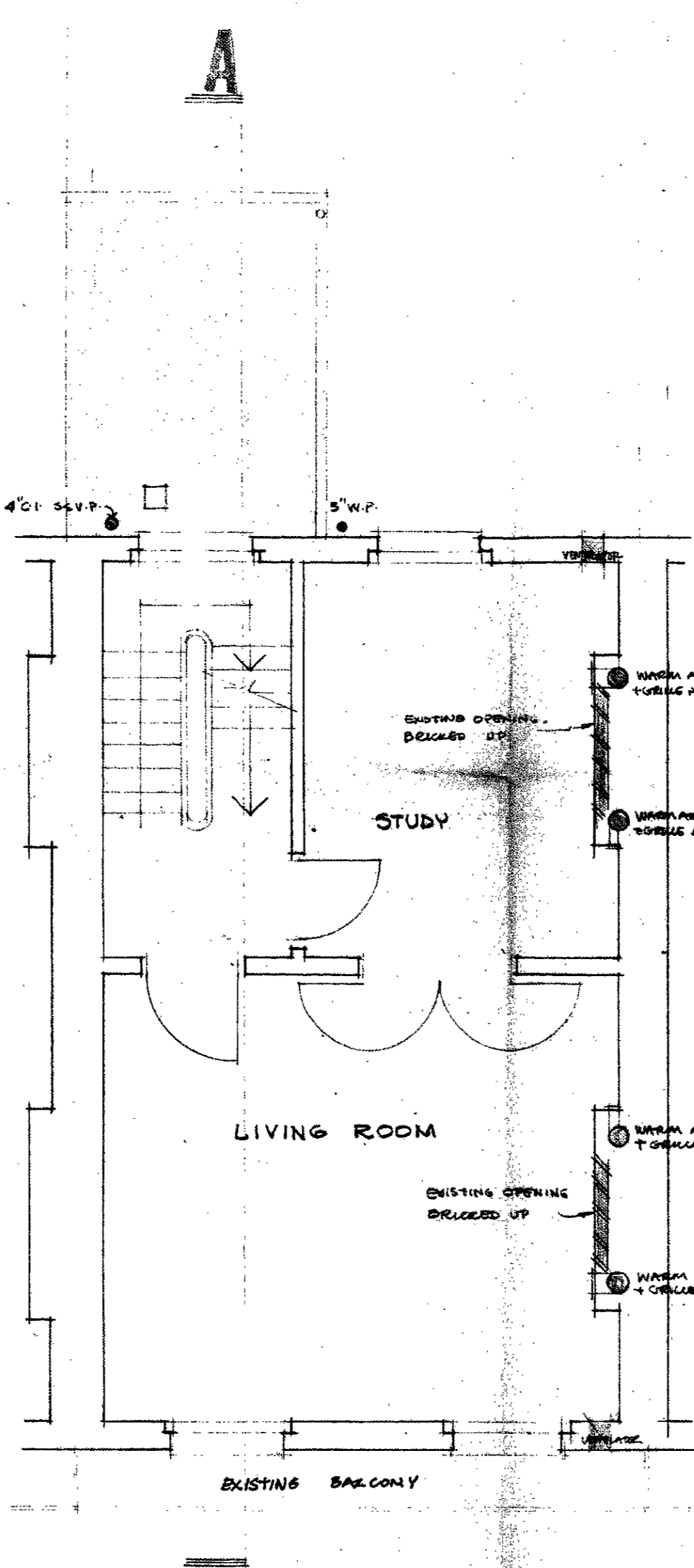


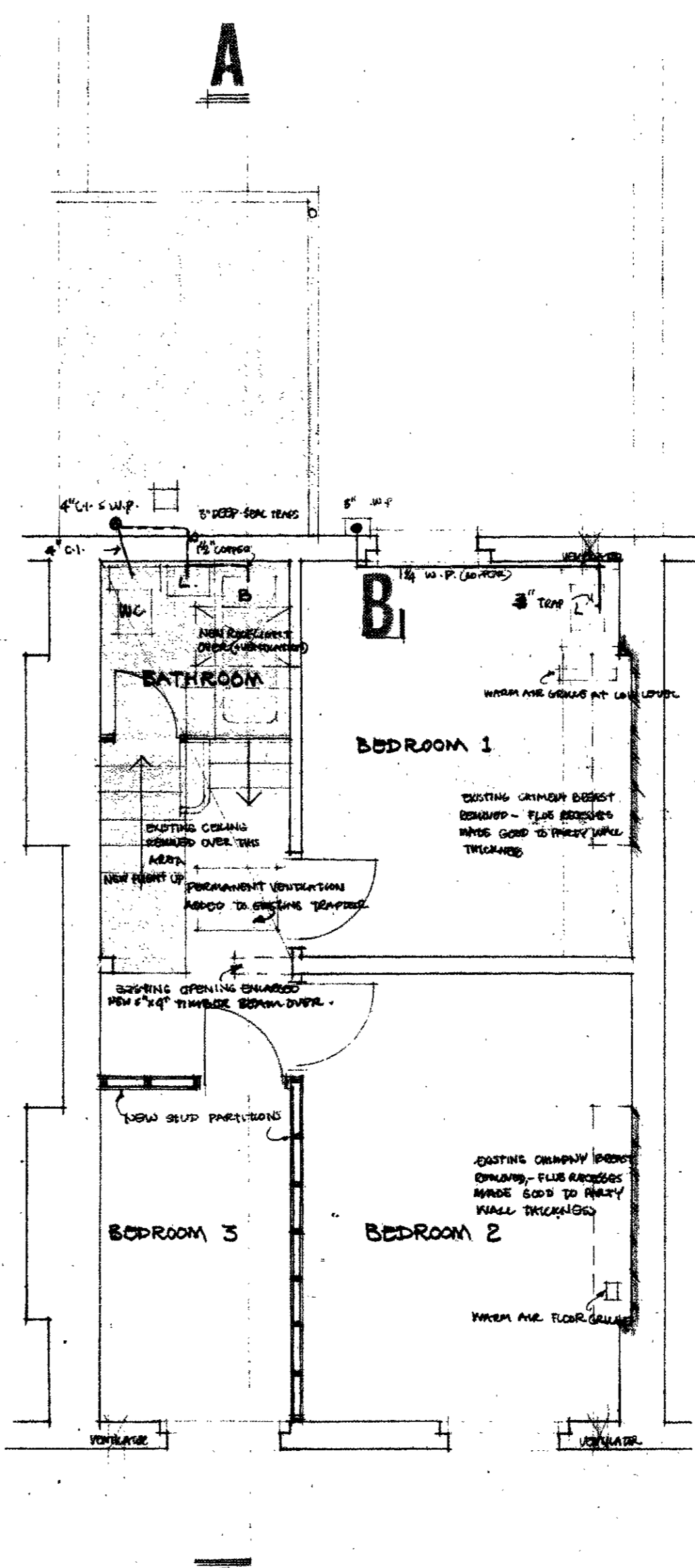
GARDEN FLOOR
EXISTING SEWER UNDER ALBERT ST



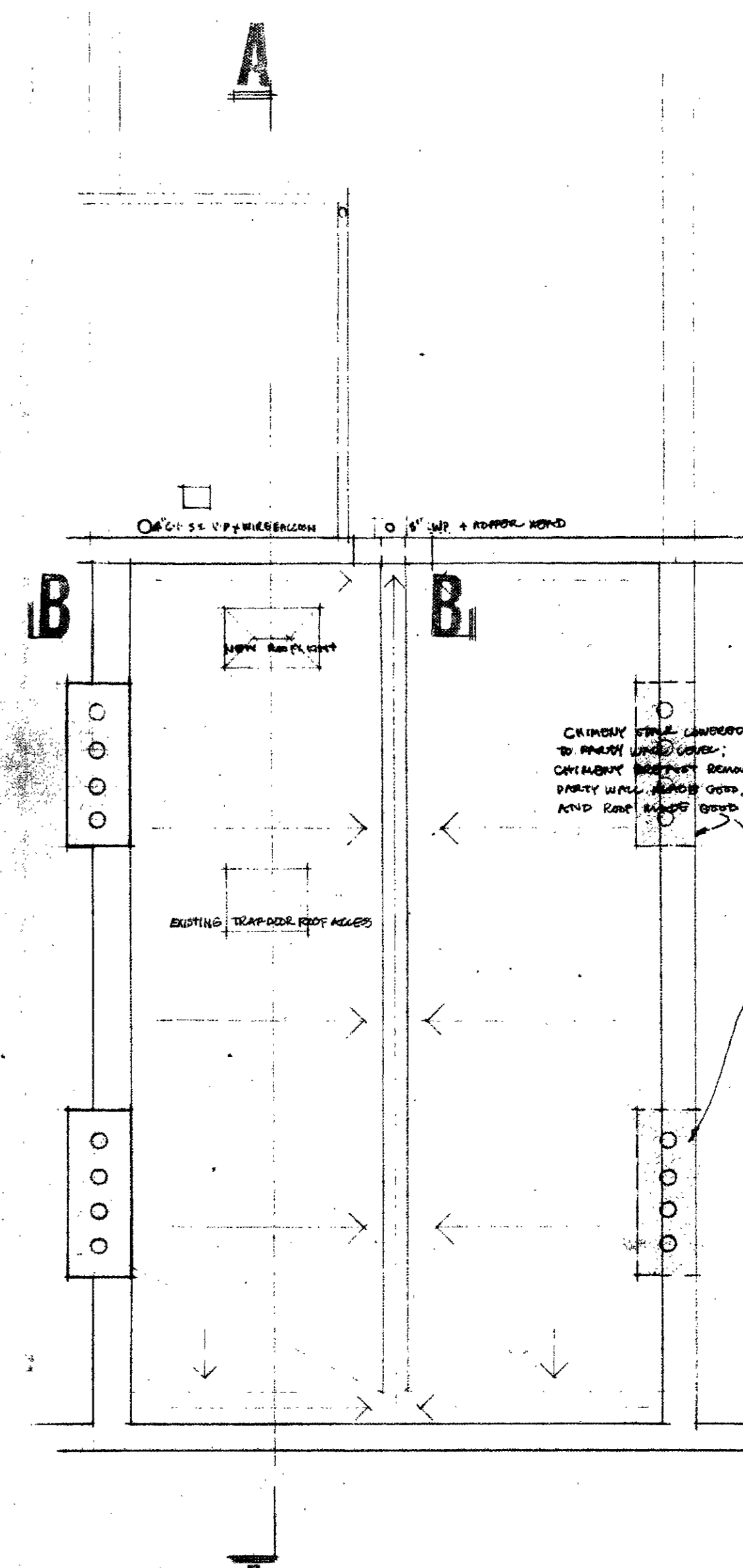
ENTRANCE FLOOR



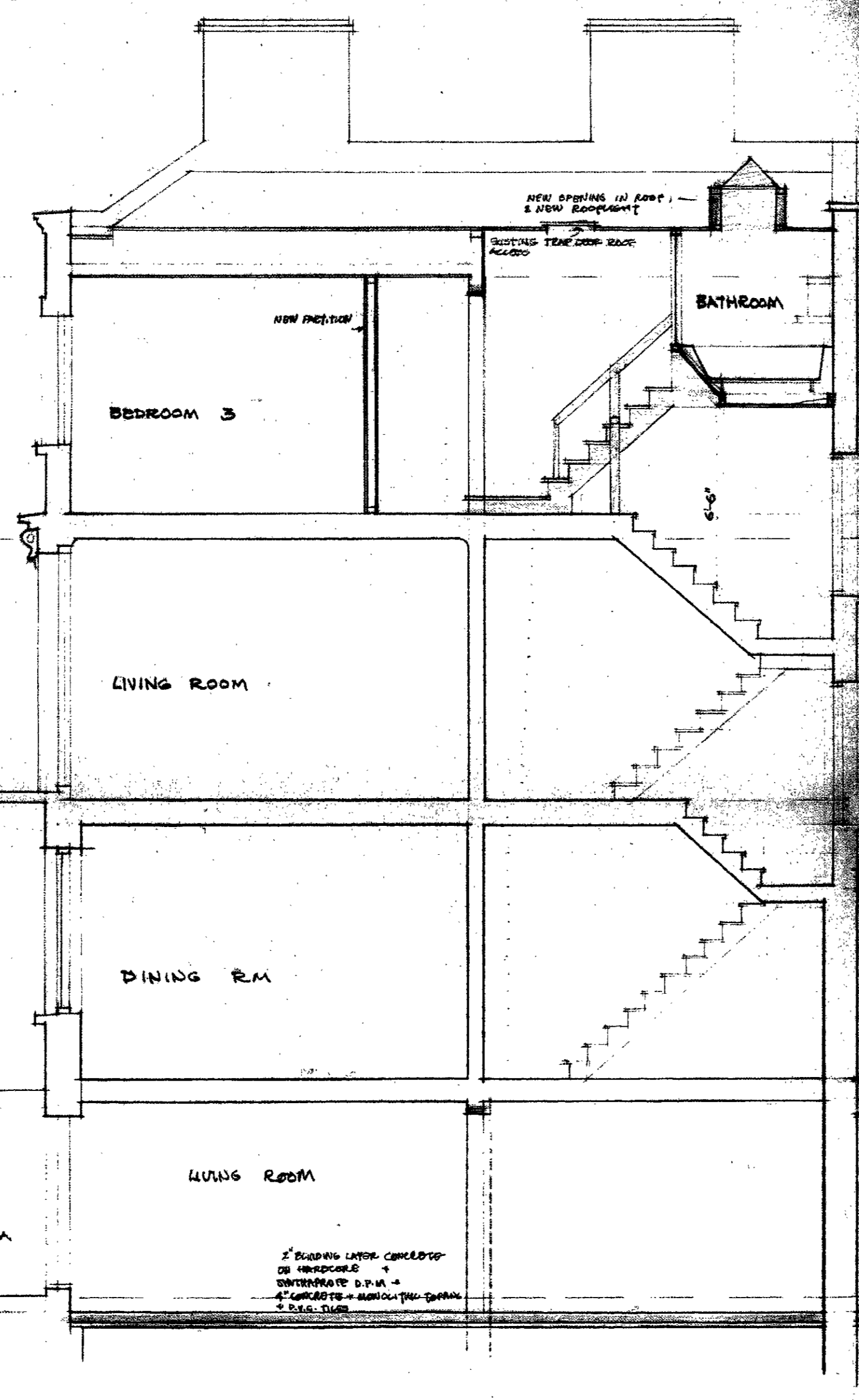
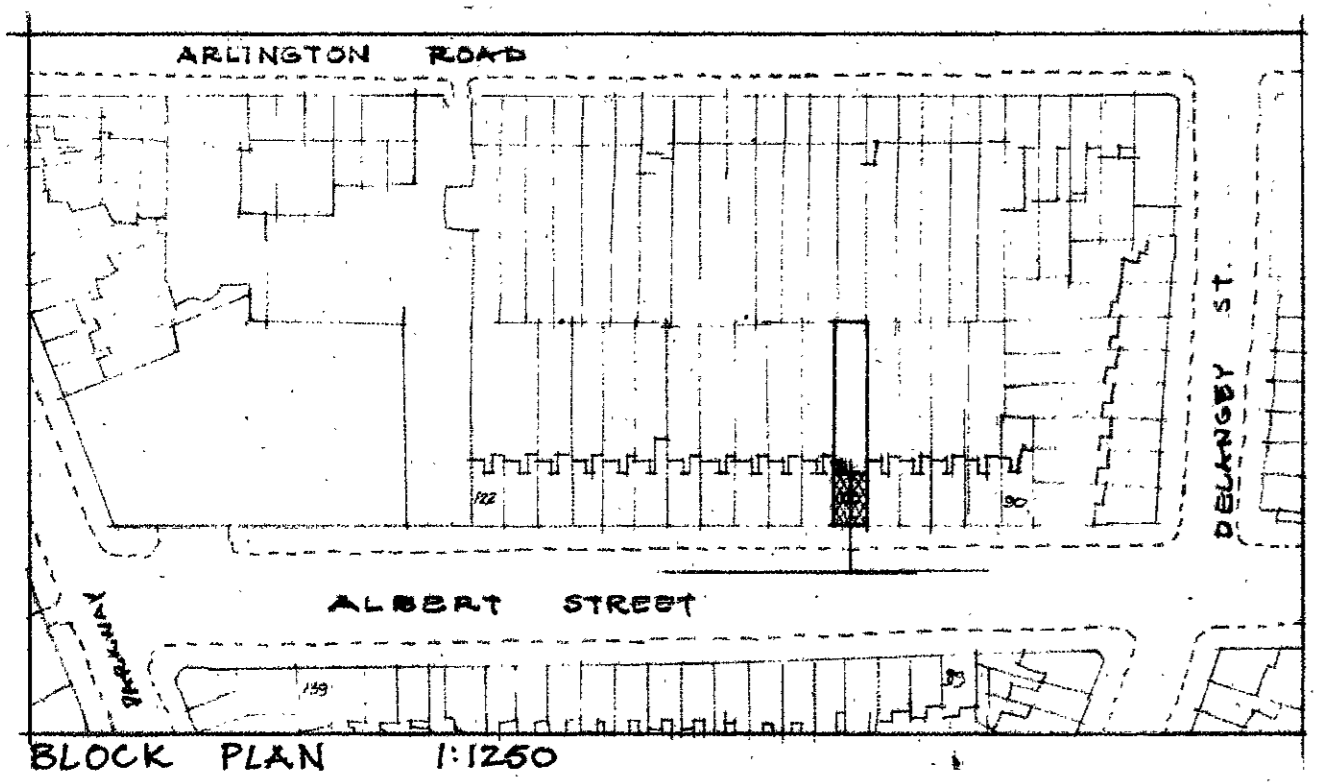
FIRST FLOOR



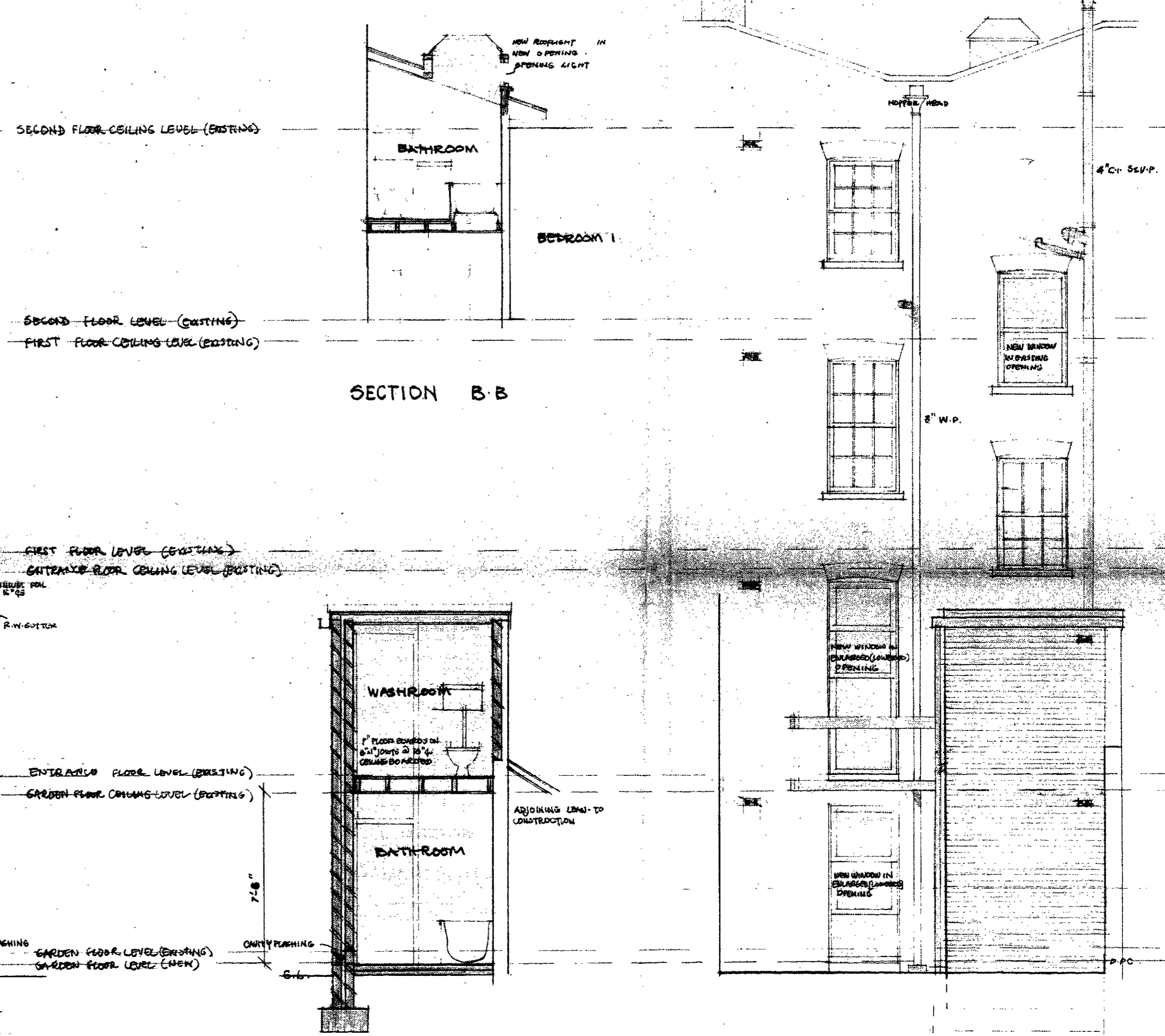
SECOND FLOOR



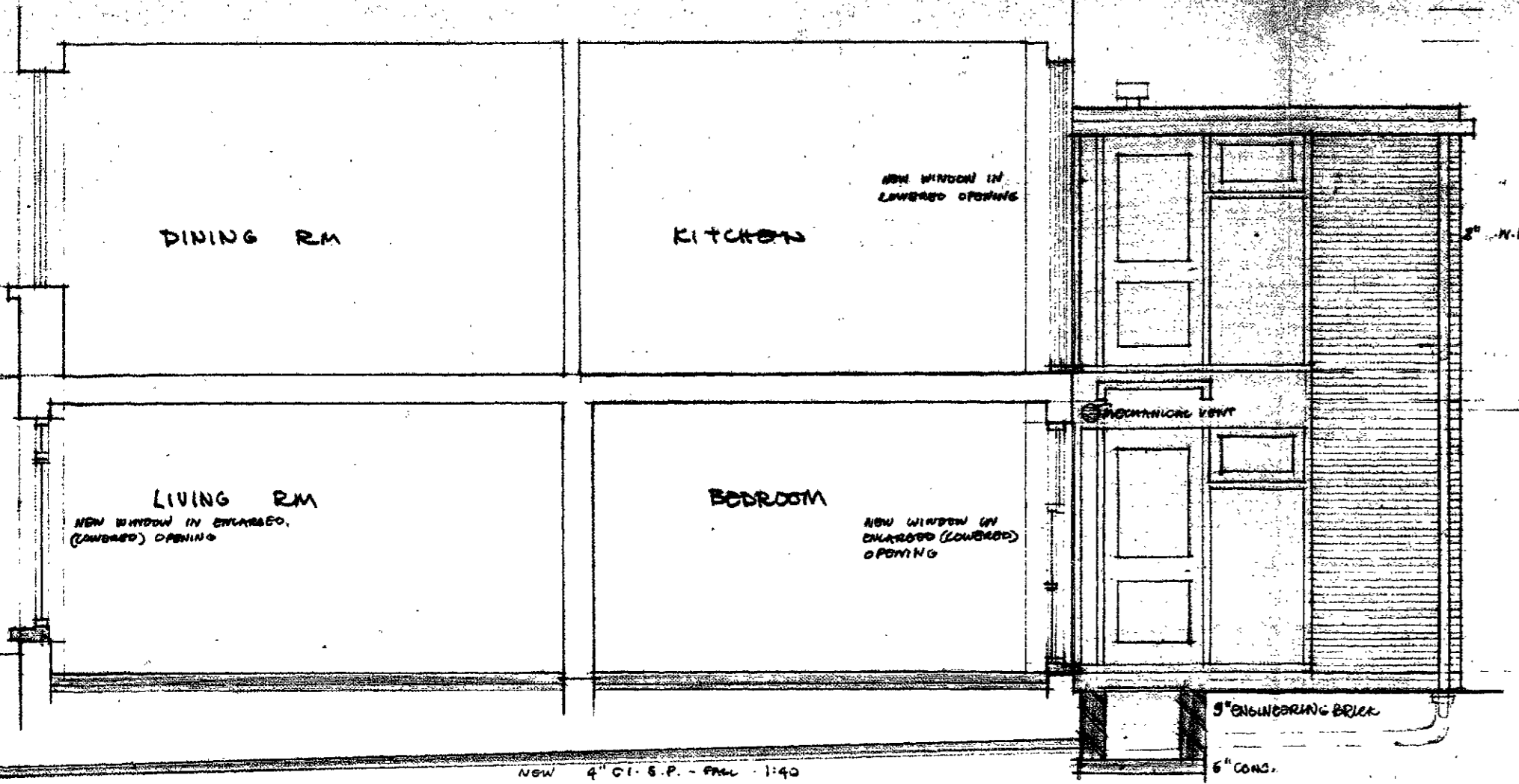
ROOF PLAN



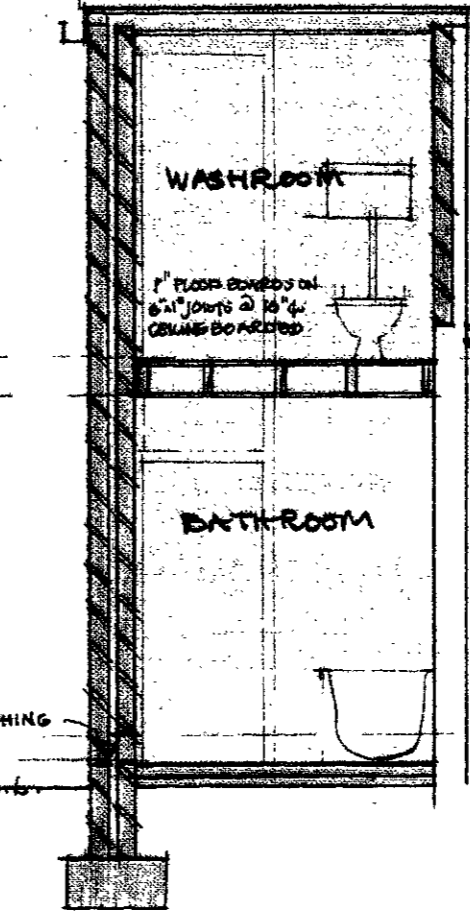
SECTION A-A



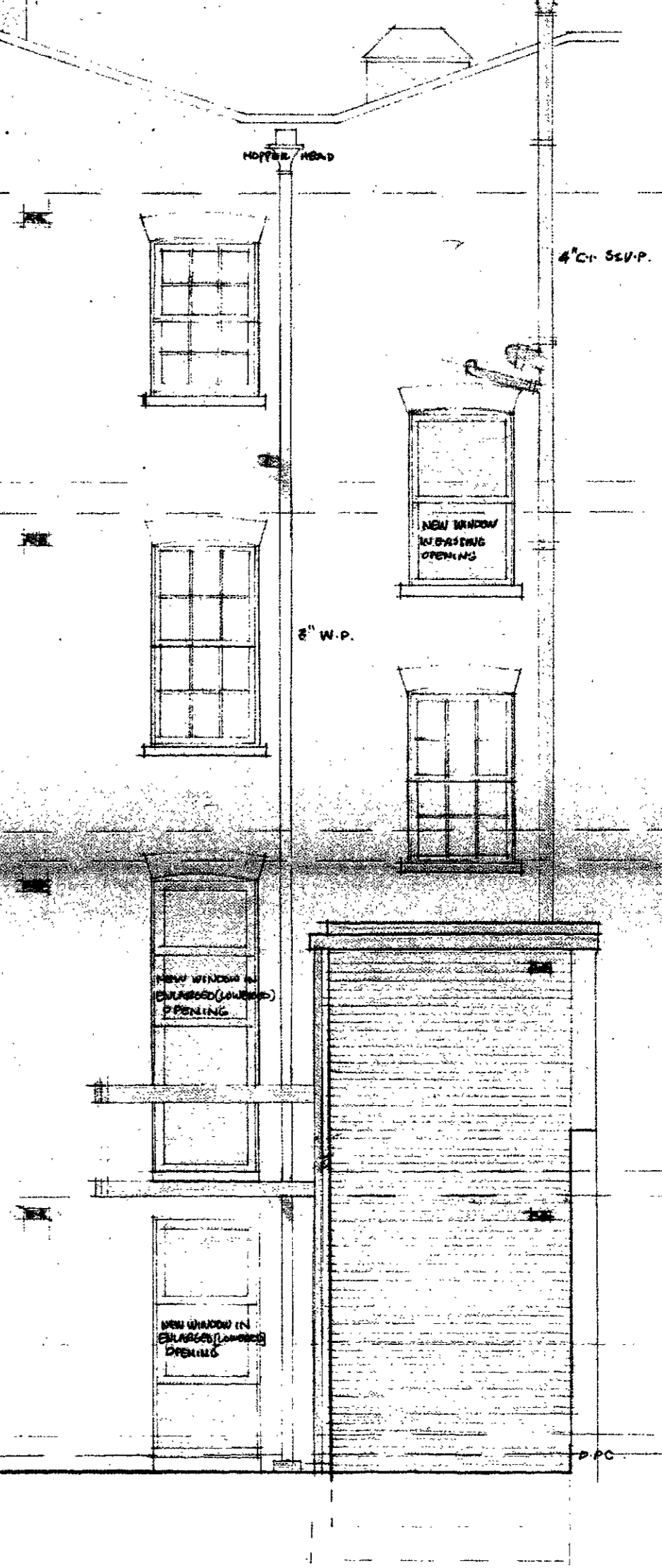
SECTION B-B



SECTION ALONG NEW DRAIN



SECTION C-C



REAR ELEVATION - N.E.

LONDON BOROUGH OF CAMDEN
PRESENTED TO THE PLANNING AND
DEVELOPMENT COMMITTEE APPLICATIONS
SUB-COMMITTEE ON 21 JUL 1965

GTP/511/17/2/439

ALTERATIONS TO
100 ALBERT ST

PLANS · SECTIONS · ELEVATION.

SCALE: 1/4" = 1'-0" DATE MAY 1965

EDWARD BURD AA DIPL.