

- NEW ONCE WEATHERED TWICE THROATED COPING ON NEW DPC AND MORTAR BED
- EXISTING PARAPET WALL BRICKWORK REPAIRED AS NECESSARY. EXISTING 2ND COURSE BRICK COPING AND DPC REMOVED AND CLEARED FROM SITE.
- NEW 20mm THICK TWO COAT RENDER TO BOTH FACES OF PARAPET WALL. RENDER TO INNER FACE TO FINISH WITH GALVANISED STEEL BELL MOUTH RENDER STOP BEAD ABOVE LEAD FLASHING TO NEW ROOF COVERINGS. OUTER FACE OF PARAPET TO HAVE RUSTICATION TO MATCH EXISTING. WHERE EXTERNAL WALLS NOT RENDERED NEW BRICKWORK BELOW COPING TO MATCH EXISTING

TYPICAL COPING STONE DETAIL. SCALE 1:5.



9470238

N^os. 84-90 PRATT STREET
 107-117 CAMDEN STREET
 50 KENTISH TOWN ROAD.

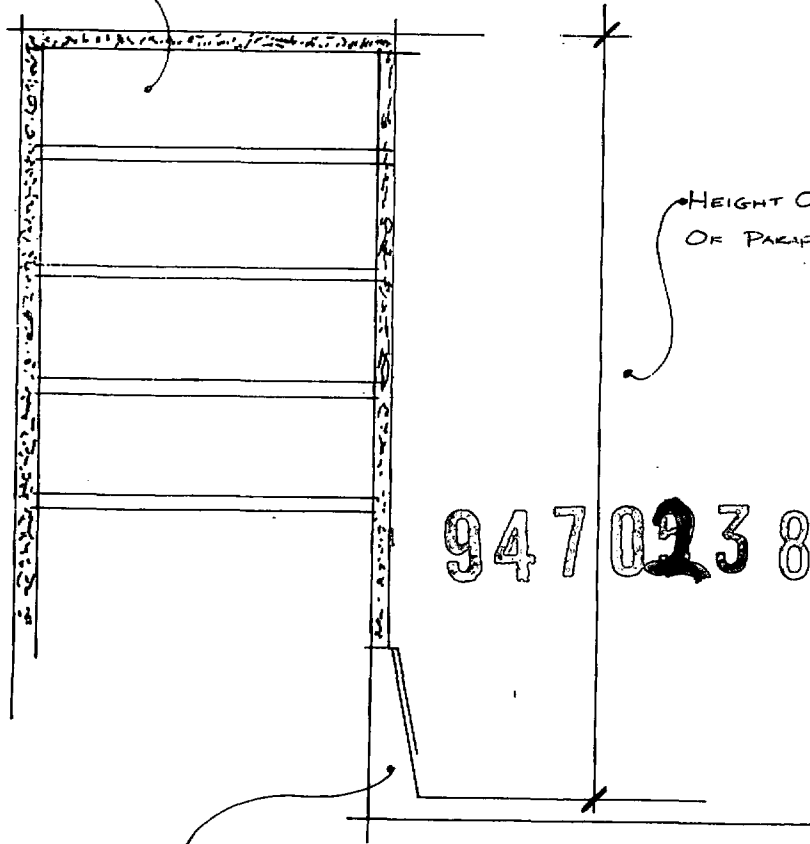
LANDERS
 AND ASSOCIATES
 RAPIER HOUSE, 40-46 LAMBS CONDUIT STREET,
 LONDON WC1N 3LJ.
 TEL: 071 831 6311 FAX: 071 831 1826

XRD PROGRAMME 1994/5.

job no. 93099/100/101. SK 01. rcv.

TYPICAL DETAIL TO- 50 KENTISH TOWN ROAD. Paddy.
84-90 PRATT STREET. Paddy.
107-117 CAMDEN STREET.

EXISTING 2ND TOP COURSES OF BRICKWORK
AND RENDER TO INNER FACE OF PARAPET
TO BE REMOVED.



HEIGHT OF INNER FACE
OF PARAPET VARIES.

9470238R1

REFER TO DRG NO-
93099/100/101/SK01
FOR PROPOSED DETAIL.

EXISTING PARAPET GUTTER COVERINGS AND
COVER FLASHING RETAINED.

N^os. 84-90 PRATT STREET.
107-117 CAMDEN STREET.
50 KENTISH TOWN ROAD.

DRG. N^o. 93099/100/101/ 03.

LANDERS
AND ASSOCIATES

RAPIER HOUSE, 40-46 LAURENCE CONDUIT STREET,
LONDON W6JN 3LJ.
TEL: 071 831 6111 FAX: 071 831 1826

job no.

rev.