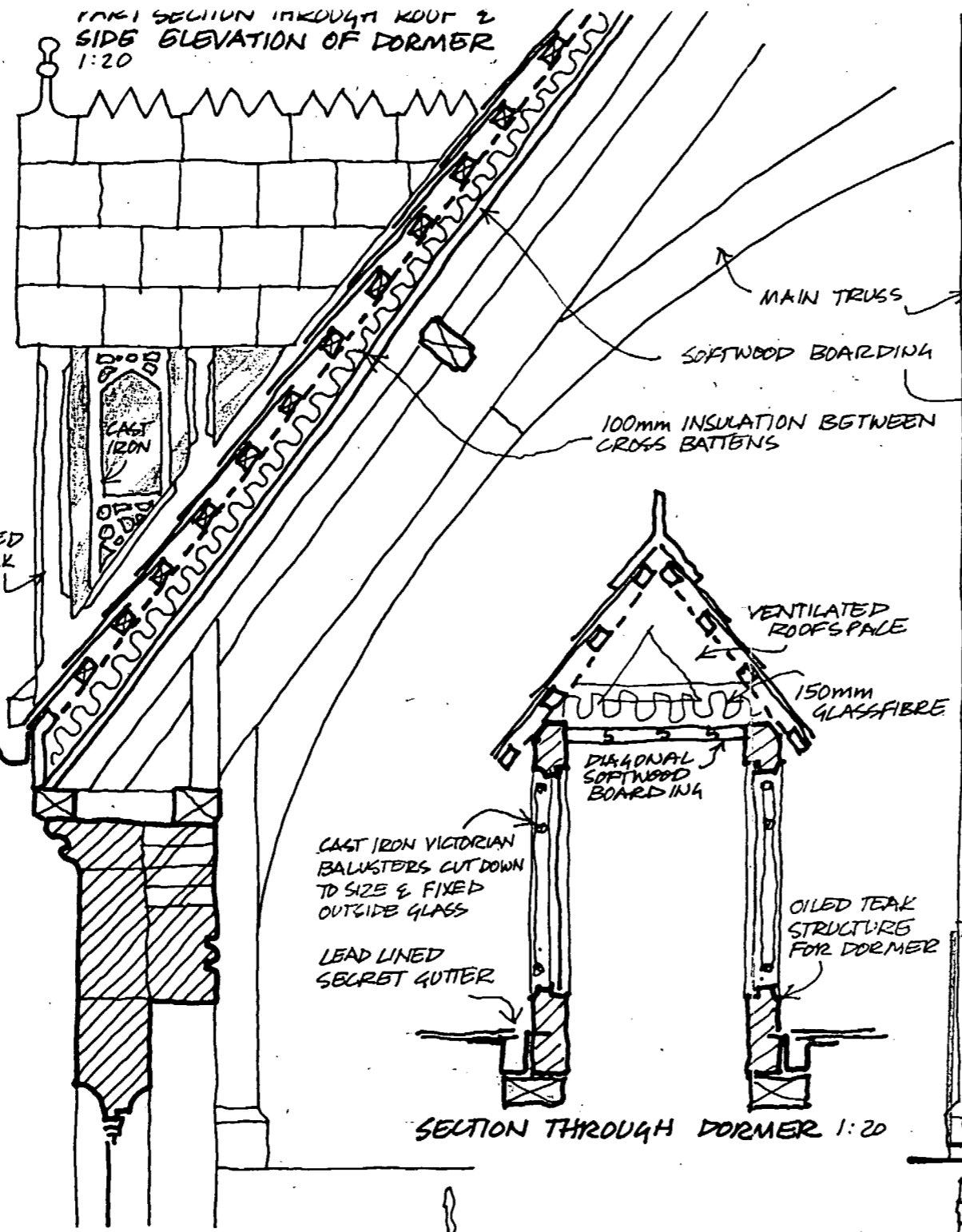
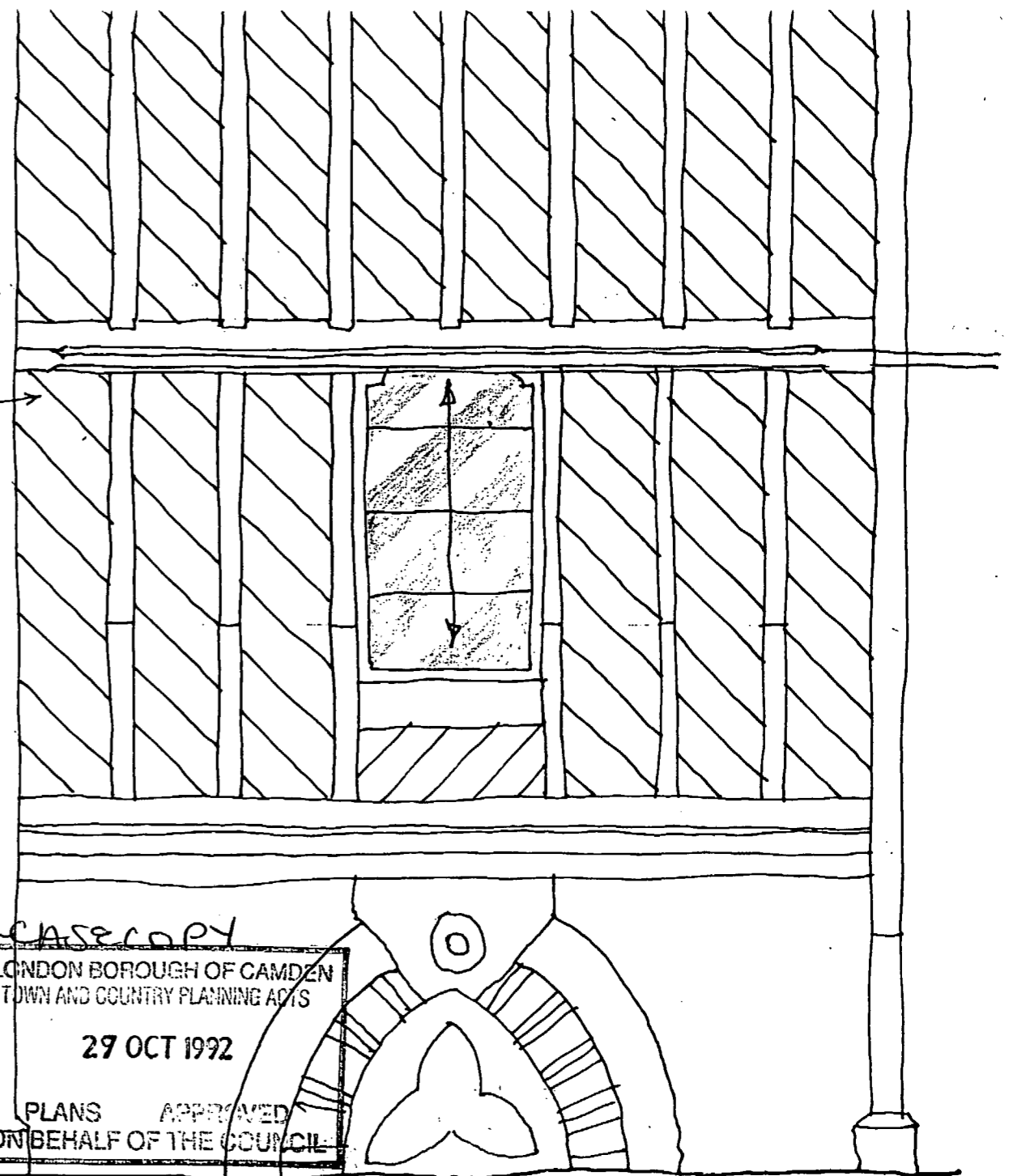


SIDE HUNG  
PAINTER METAL  
CASEMENT  
WITH SECURITY  
BARS ON  
INSIDE

ELEVATION OF DORMER 1:20



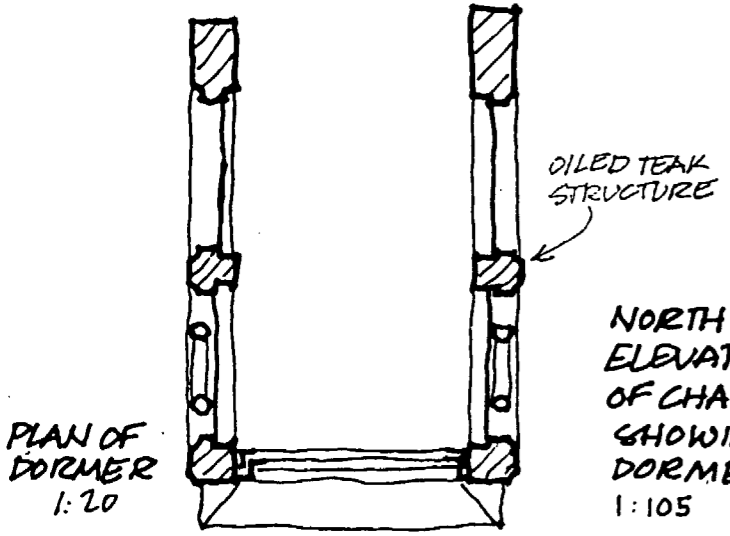
SECTION THROUGH DORMER 1:20



CASE COPY  
LONDON BOROUGH OF CAMDEN  
TOWN AND COUNTRY PLANNING ACTS  
29 OCT 1992  
PLANS APPROVED  
ON BEHALF OF THE COUNCIL

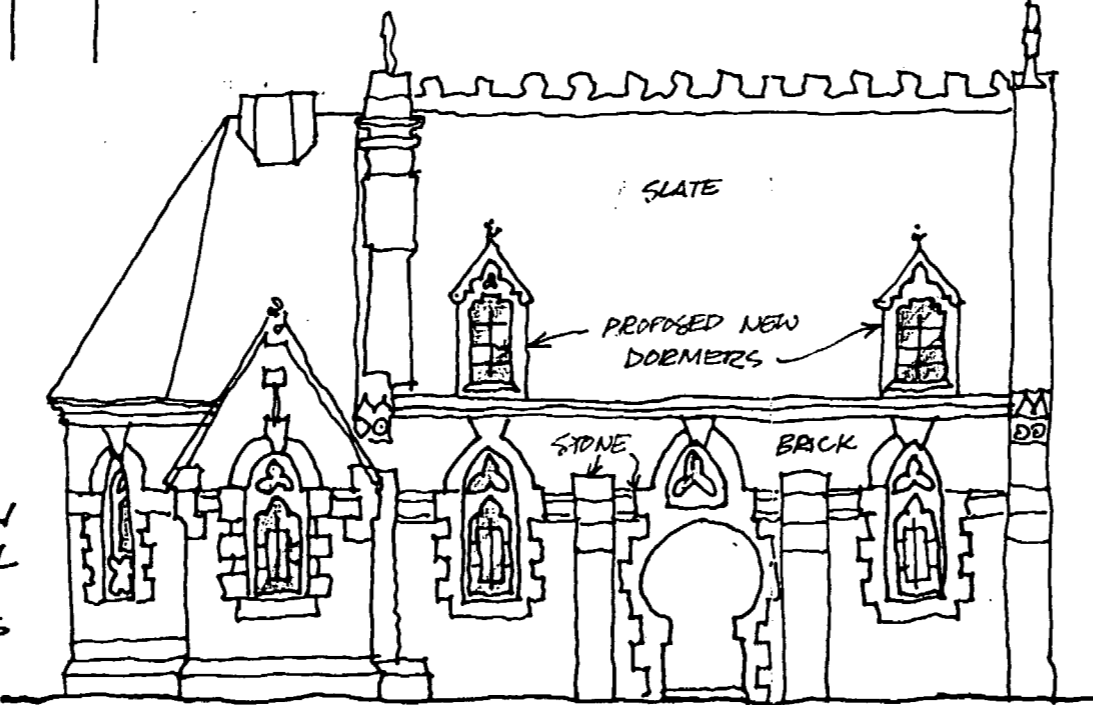
ELEVATION OF DORMER FROM INSIDE 1:20  
NOTE THAT CEILING OF DORMER IS IN LINE WITH BACK  
EDGE OF PURLIN.

HB 927 0132



PLAN OF  
DORMER  
1:20

NORTH  
ELEVATION  
OF CHAPEL  
SHOWING  
DORMERS  
1:105



**NEW DORMER WINDOWS  
FOR ST MARTIN'S CHAPEL, BAYHAM ST. NW1**  
SCALES 1:20 & 1:105

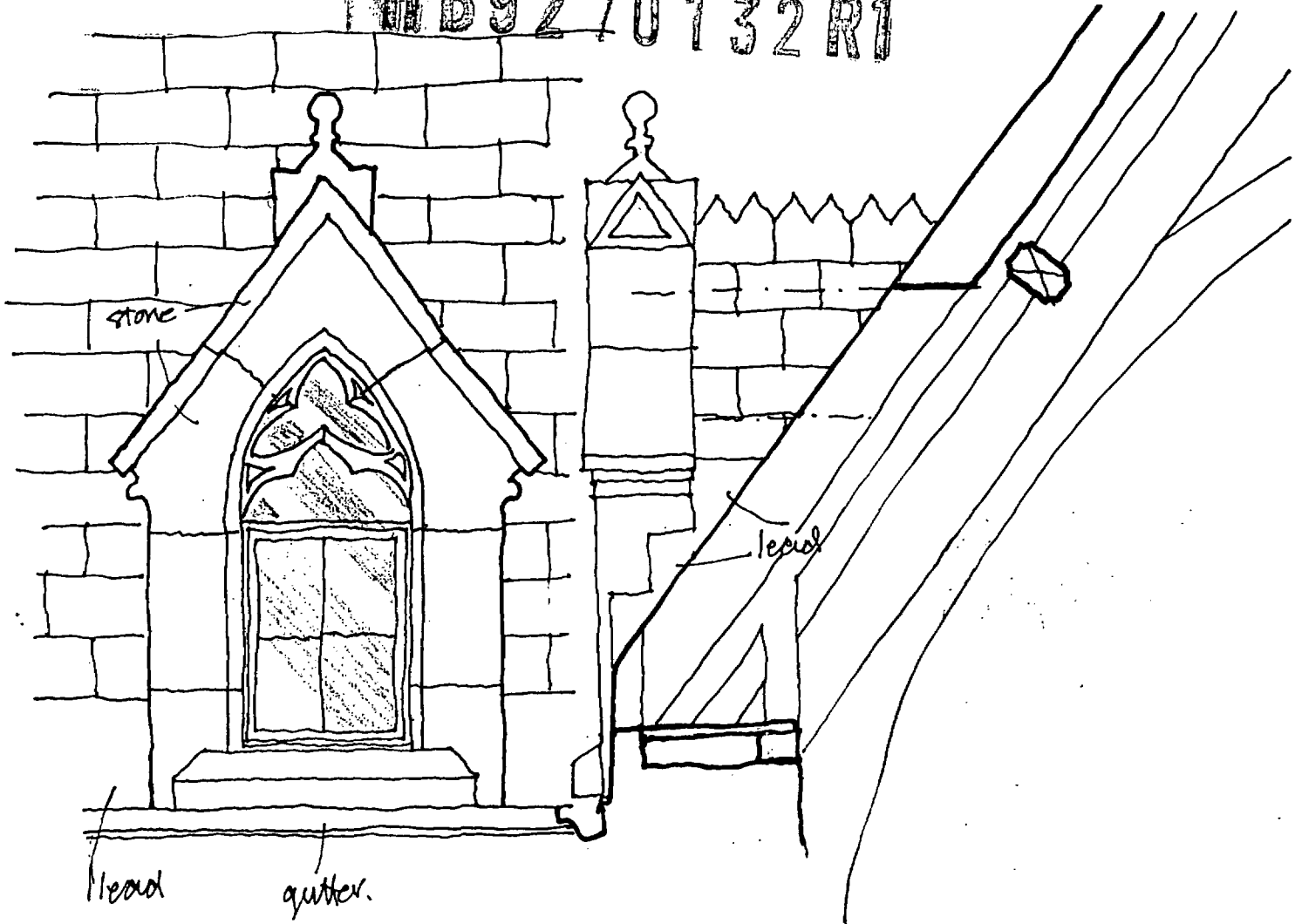
S F BONE RIBA BA DipTP AADip. Tel 485 6215.

**MATERIALS.**  
EXPOSED TIMBER — OILED TEAK  
SASH & FRAME — GALVANISED STEEL  
ROOF COVERING — SECONDHAND SLATES & RIDGE TILES (CLAY)  
SIDE GRILLES — PAINTER CAST IRON (VICTORIAN BALUSTRADES CUT DOWN)

S F BONE, 2, ST MARTINS, BAYHAM ST NW10BD Drawing No 1/1

ST MARTIN'S CHAPEL DORMERS - STONE VERSION

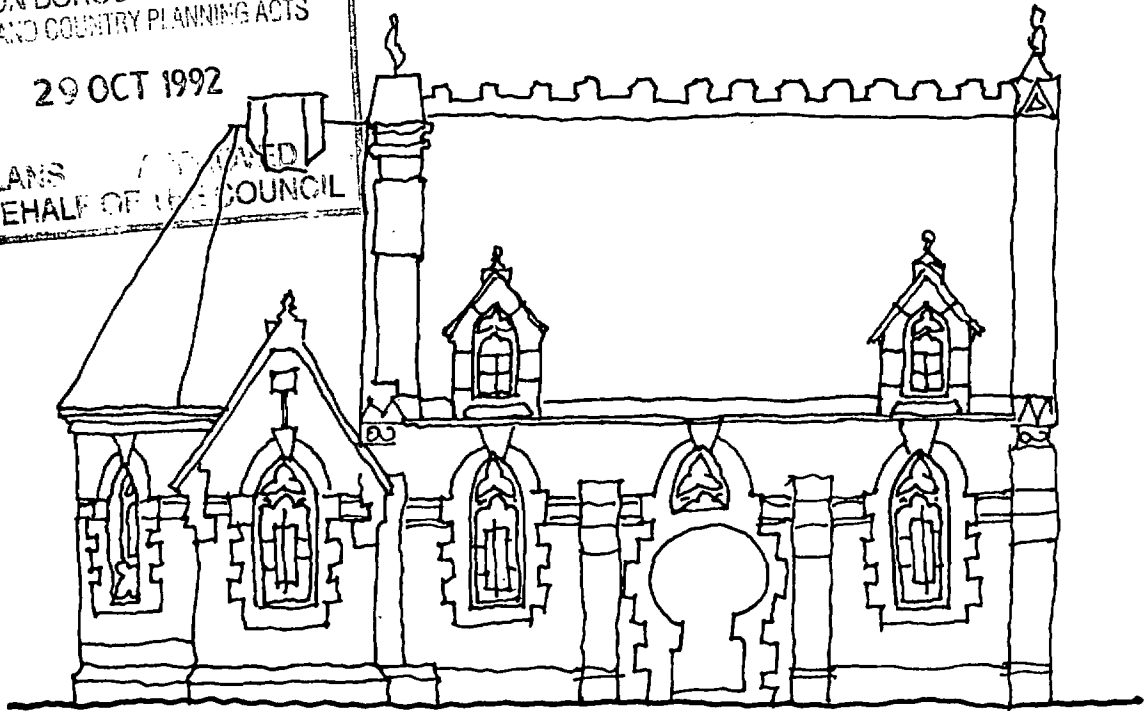
HB9270132R1



FRONT

SIDE

LONDON BOROUGH OF CAMDEN  
 TOWN AND COUNTRY PLANNING ACTS  
 29 OCT 1992  
 PLANS APPROVED  
 ON BEHALF OF THE COUNCIL



1:105