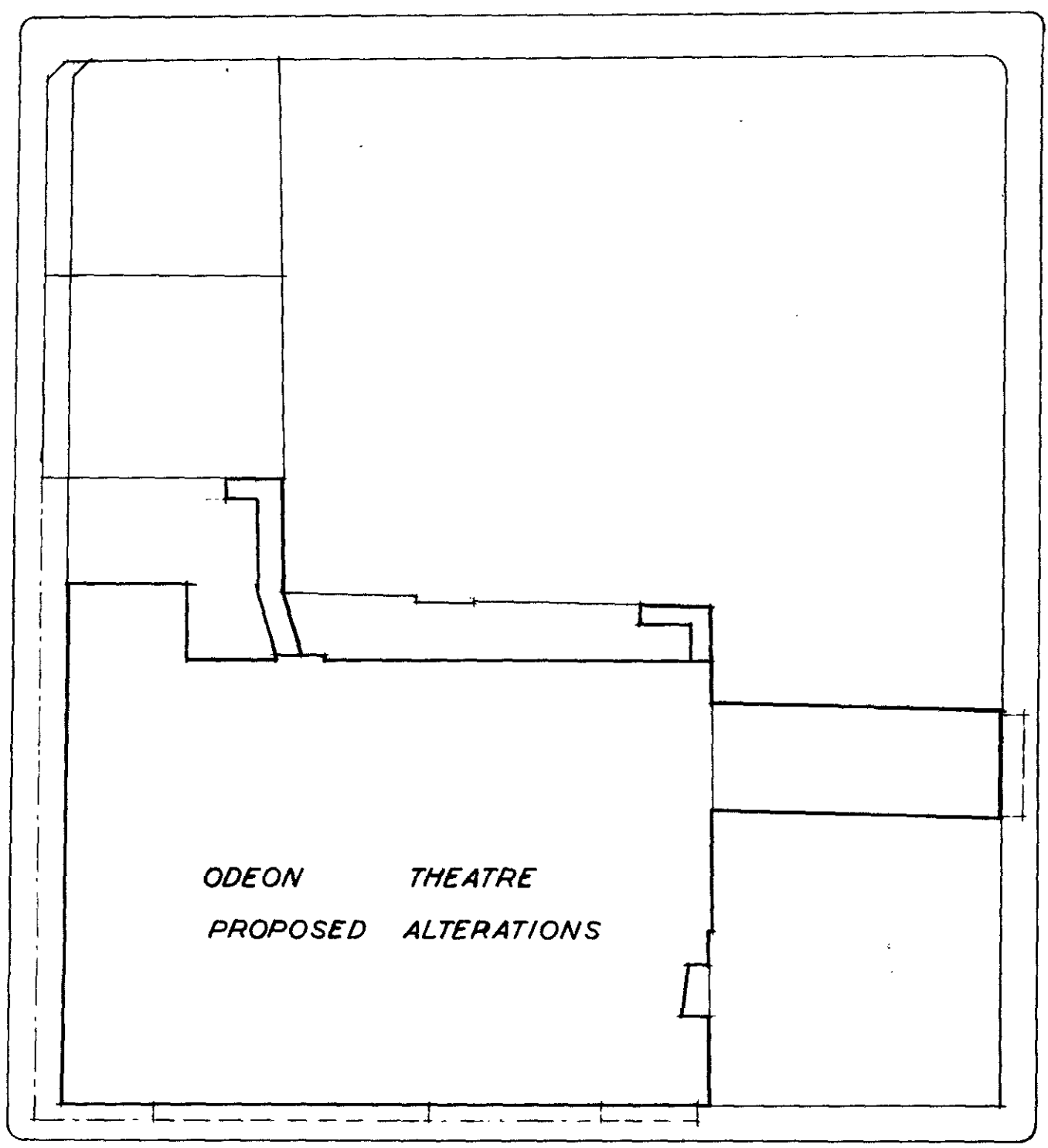


HIGH STREET

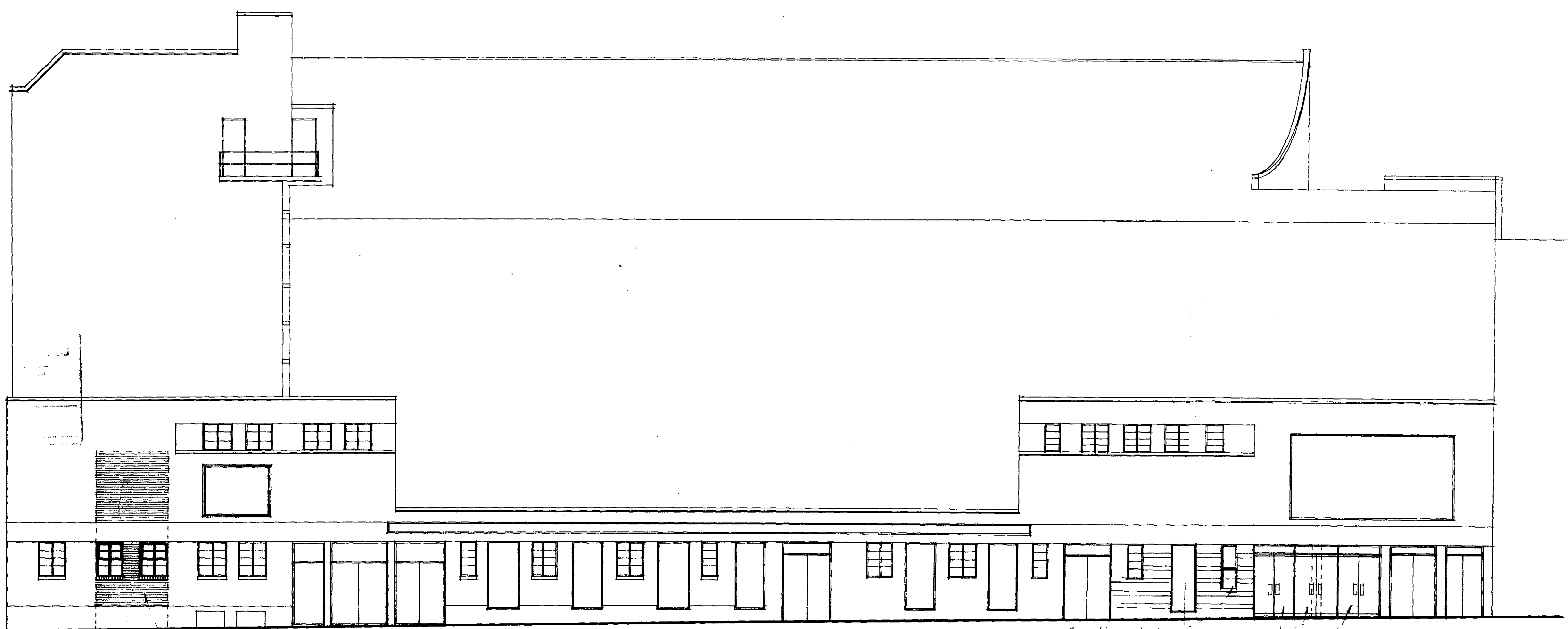
WELLINGTON STREET

PARK STREET



ARLINGTON ROAD

• BLOCK PLAN •
• SCALE : 1/500th •



• SIDE ELEVATION • SOUTH WEST : TO ARLINGTON ROAD •

LONDON BOROUGH OF CAMDEN
PRESENTED TO THE PLANNING AND
DEVELOPMENT COMMITTEE/APPLICATIONS
SUB-COMMITTEE ON 17 JAN 1968
Revised 25th September 1967.

CTP/J11/10/B/14ccc

• DRWG. No.
• R/361/5.

• THE "ODEON" THEATRE • PARK STREET • CAMDEN TOWN • LONDON N.W.1.
• PROPOSED ALTERATIONS •
• FOR : THE RANK THEATRE DIVISION LTD. •
• SCALE : EIGHT FEET TO ONE INCH • DATE : 2nd AUGUST 1967 •

RECEIVED
29 SEP 1967
S.E.I.D.

• STEPHEN EASTEN LTD.
• BUILDING CONTRACTORS.
• WESTGATE HILL GRANGE.
• NEWCASTLE UPON TYNE 4.
• TEL. 28638.