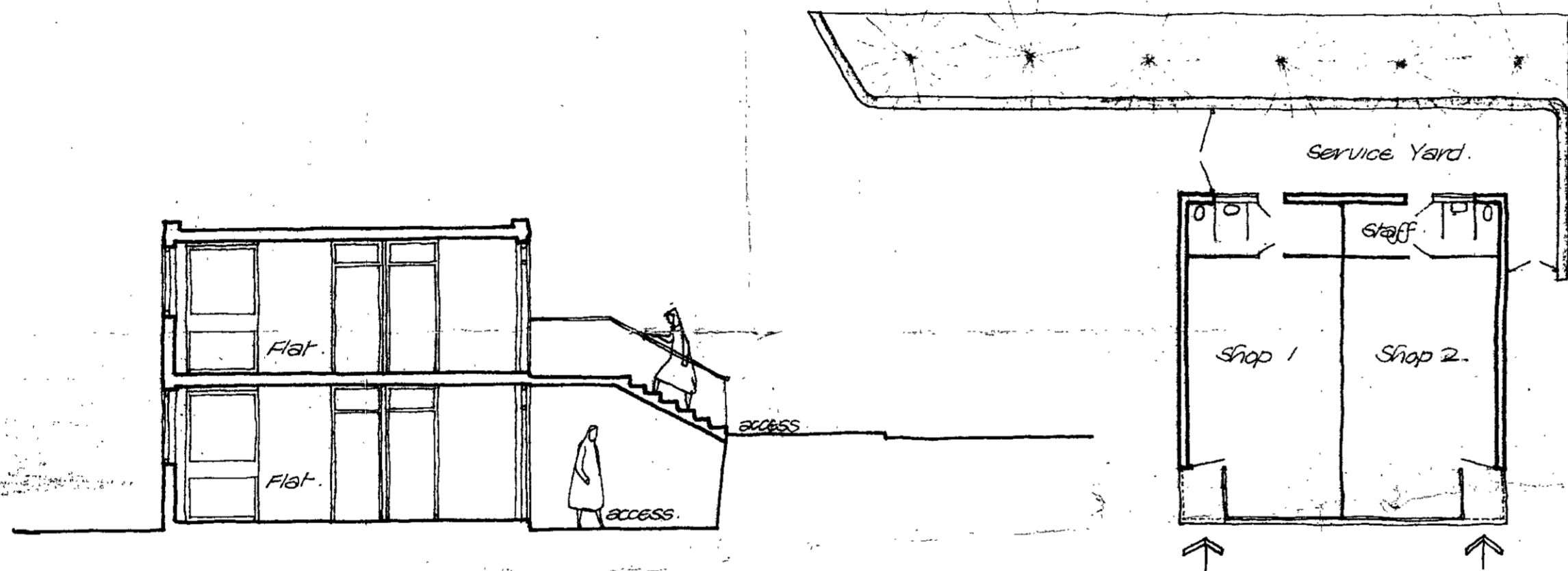
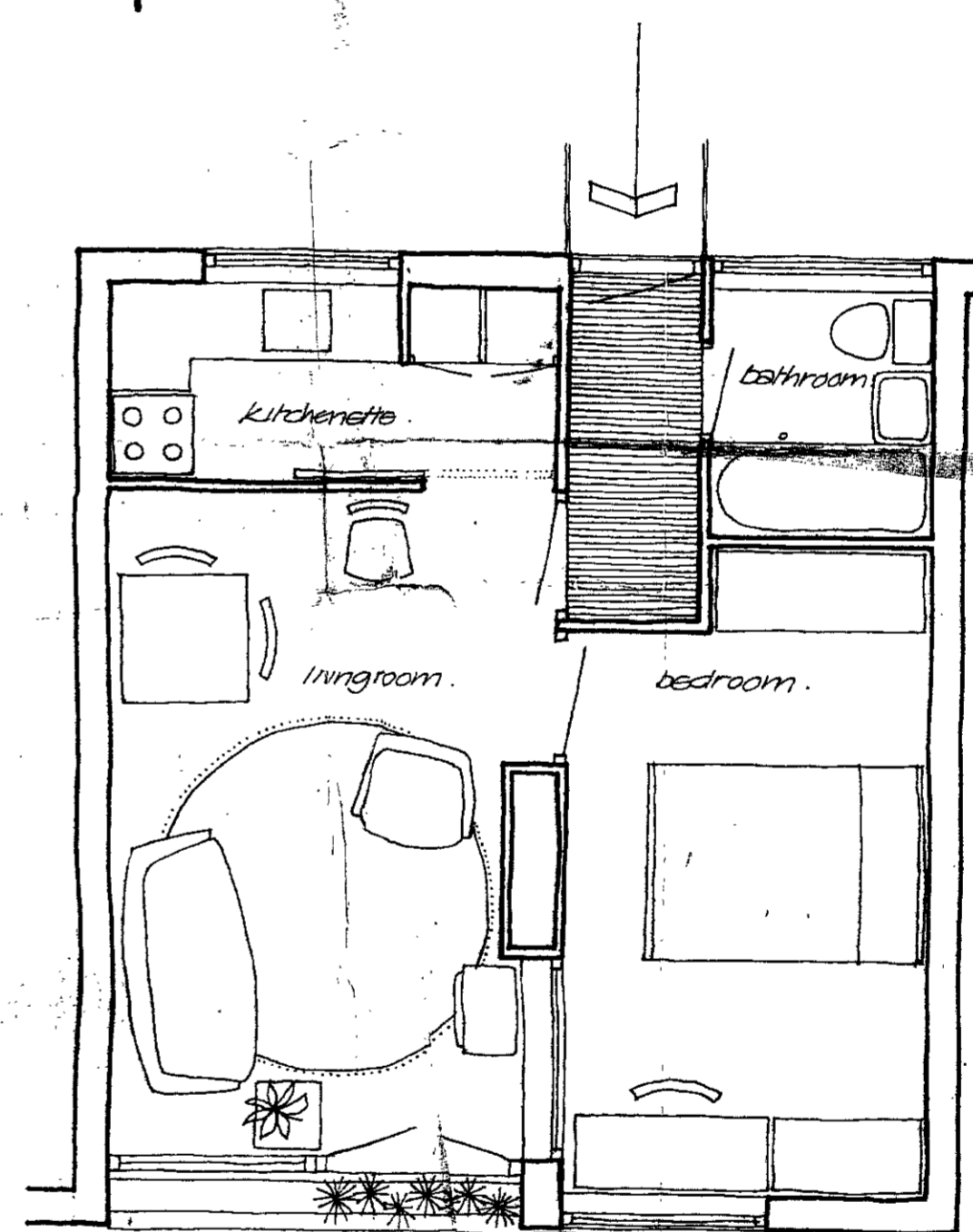


South Elevation. Blocks. D and K.



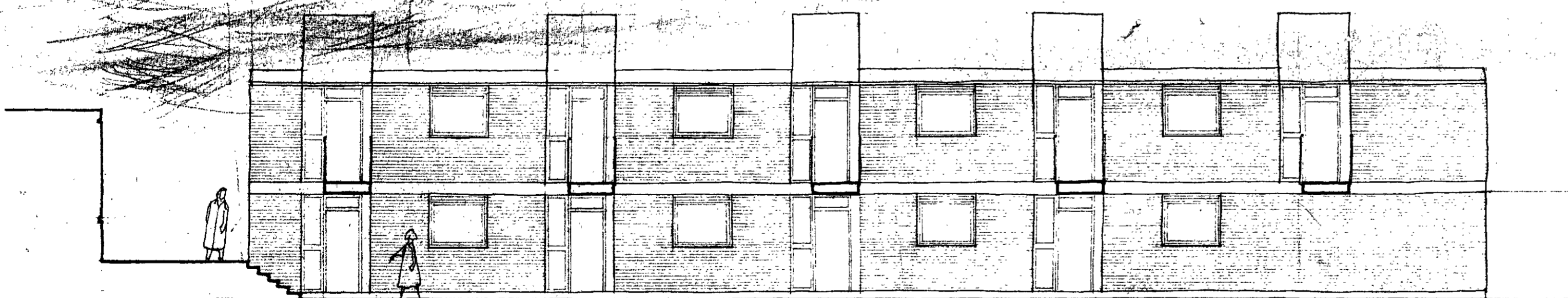
Section through 2 storey Block D.

Plan of Proposed Shops. scale 1/16" to 1'0"

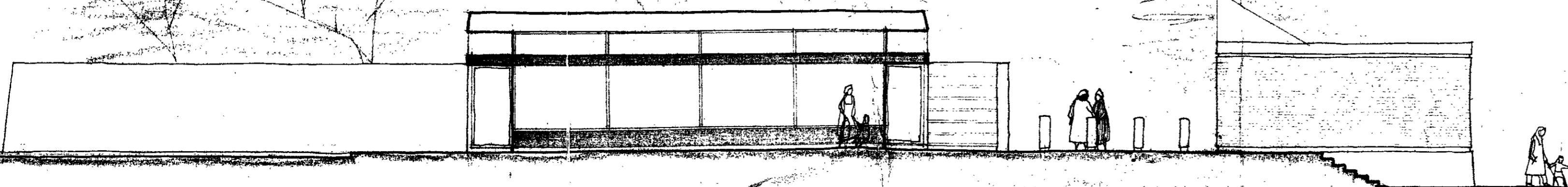


Plan of Old Peoples Flats. Area .392 sq.ft.

ARCHITECTS
 28183
 26 MAR 1962
 REF.



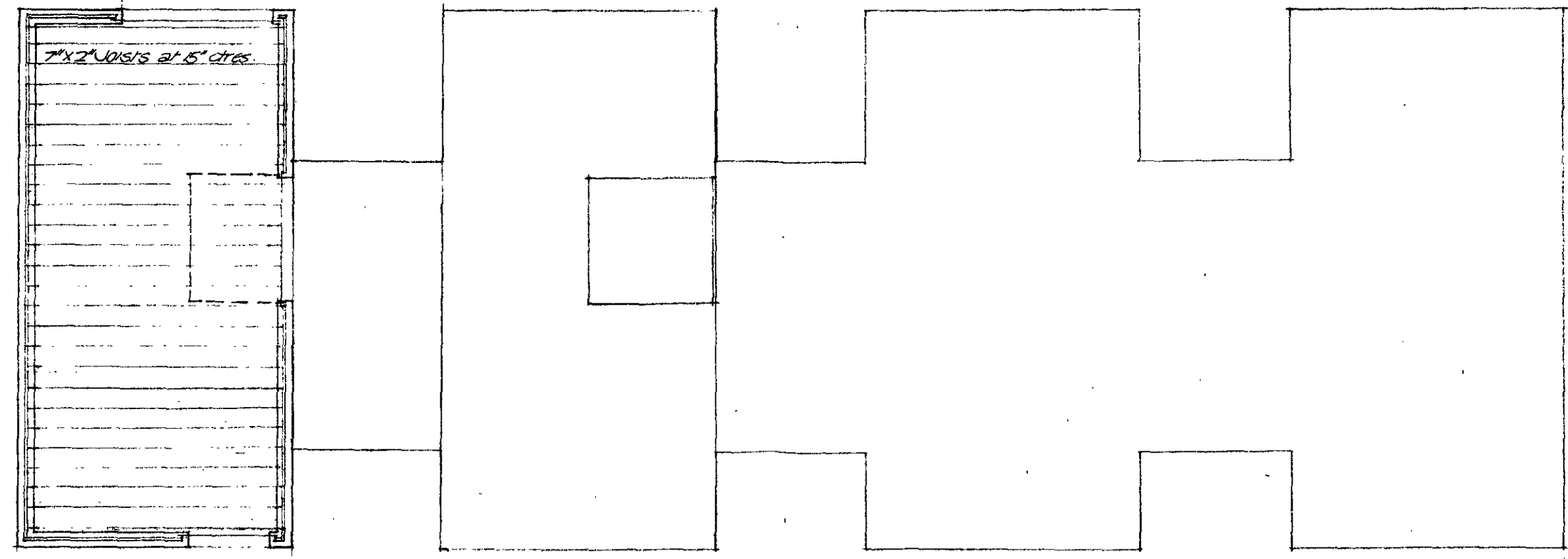
North Elevation. Block D.



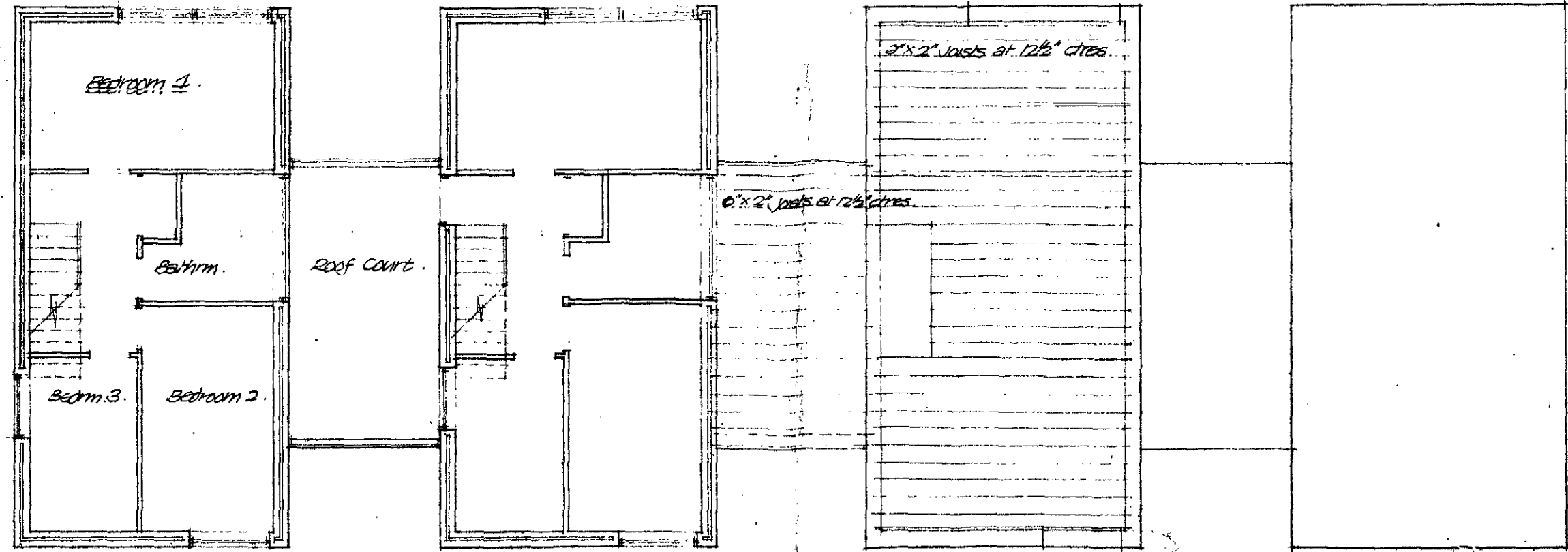
West Elevation of Shop Group.

Note. This drawing to be read in conjunction with 569/80 SK.B.

| Revision | No. | Initial | Date |
|---|---------|-----------------------|----------------|
| Camden Town Site No 1. for St. Pancras Borough Council. | Drawn | J.C. | Date 14/3/1962 |
| | Scale | 1/8" and 1/4" to 1'0" | |
| OLD PEOPLES' FLATS DETAIL PLANS | Drawing | 569-SK-OPD | |
| J. M. AUSTIN-SMITH & PARTNERS HARTERED ARCHITECTS 29 SACKVILLE STREET, W.1. REG 6183-5 | | | |
| | | | Revision Index |

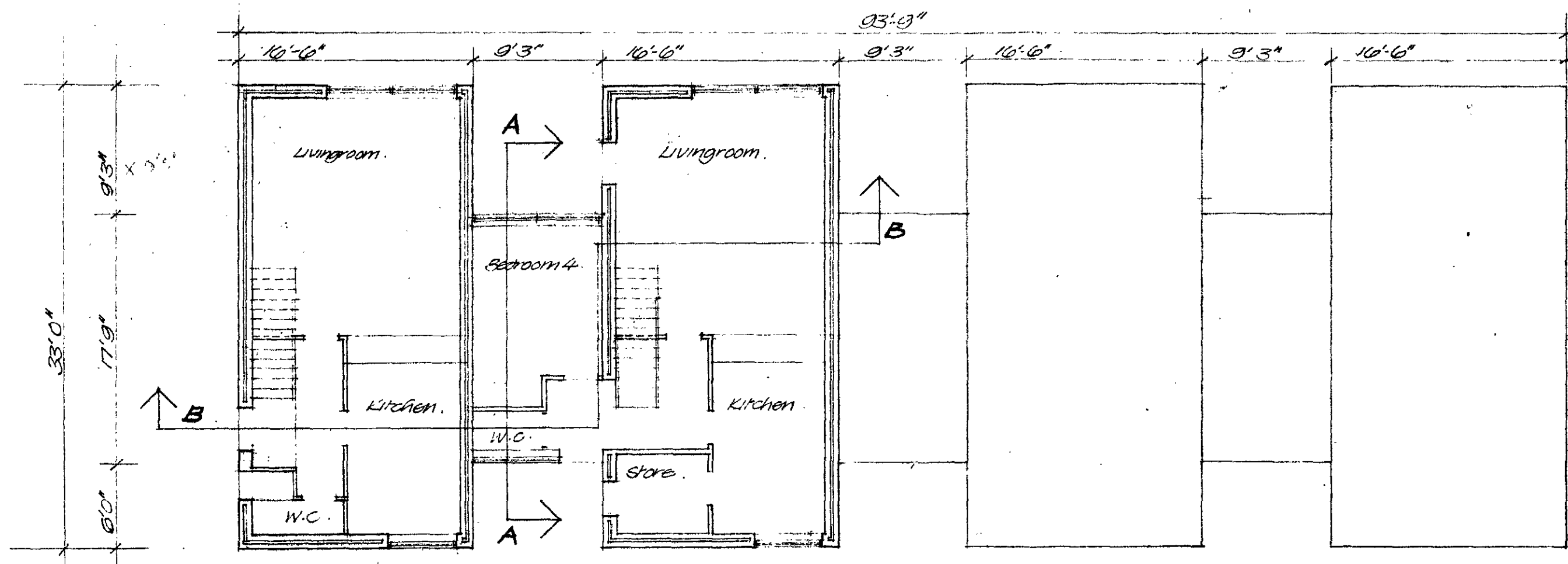


ROOF PLAN.

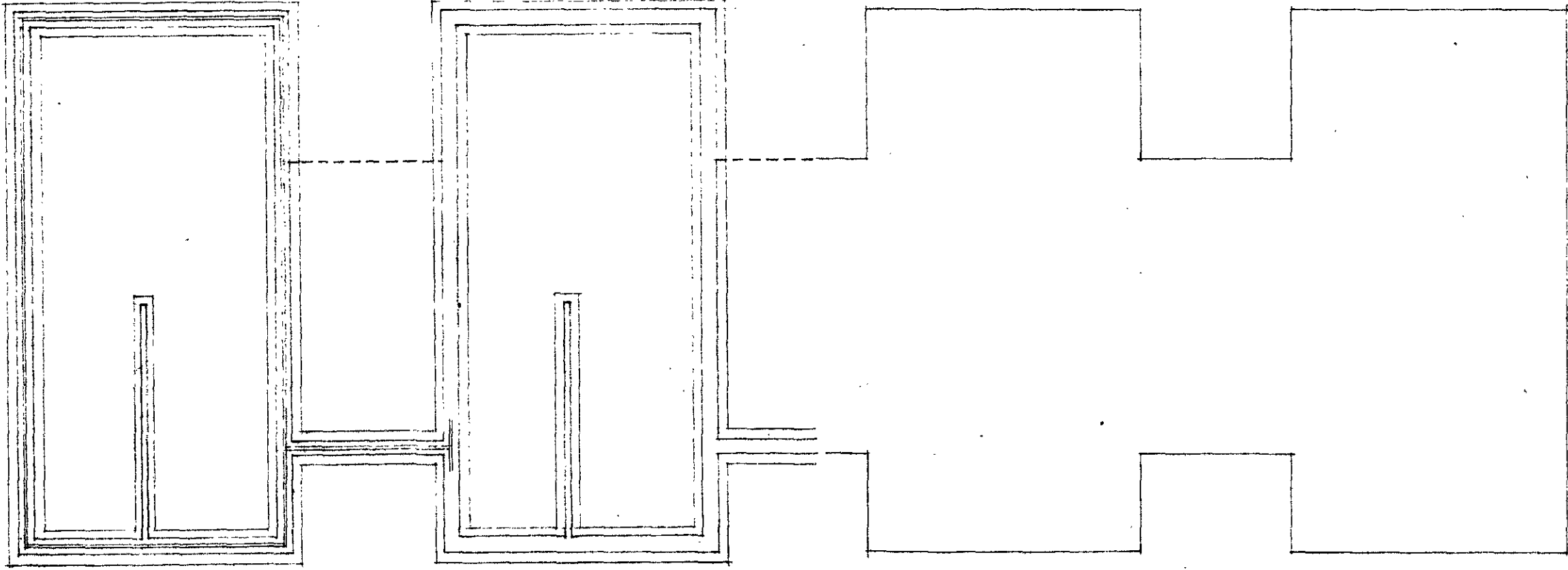


FIRST FLOOR PLAN.

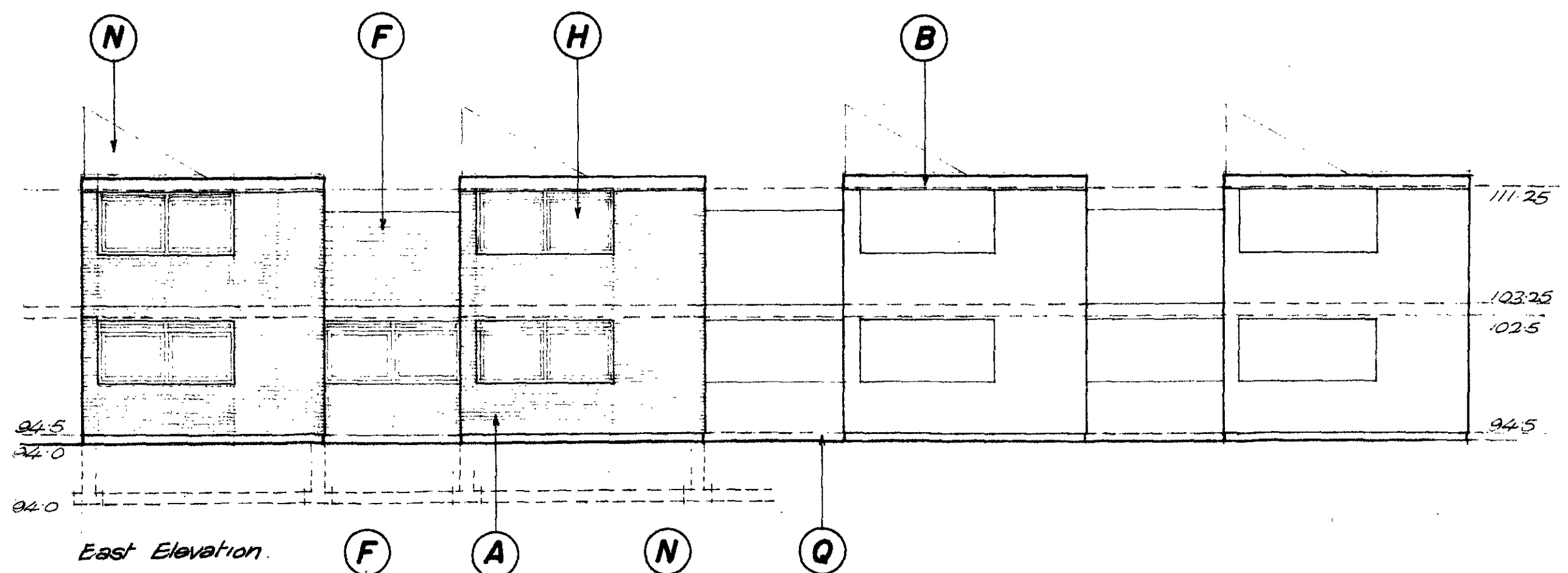
F.F. PLAN. LAYOUT OF JOISTS.



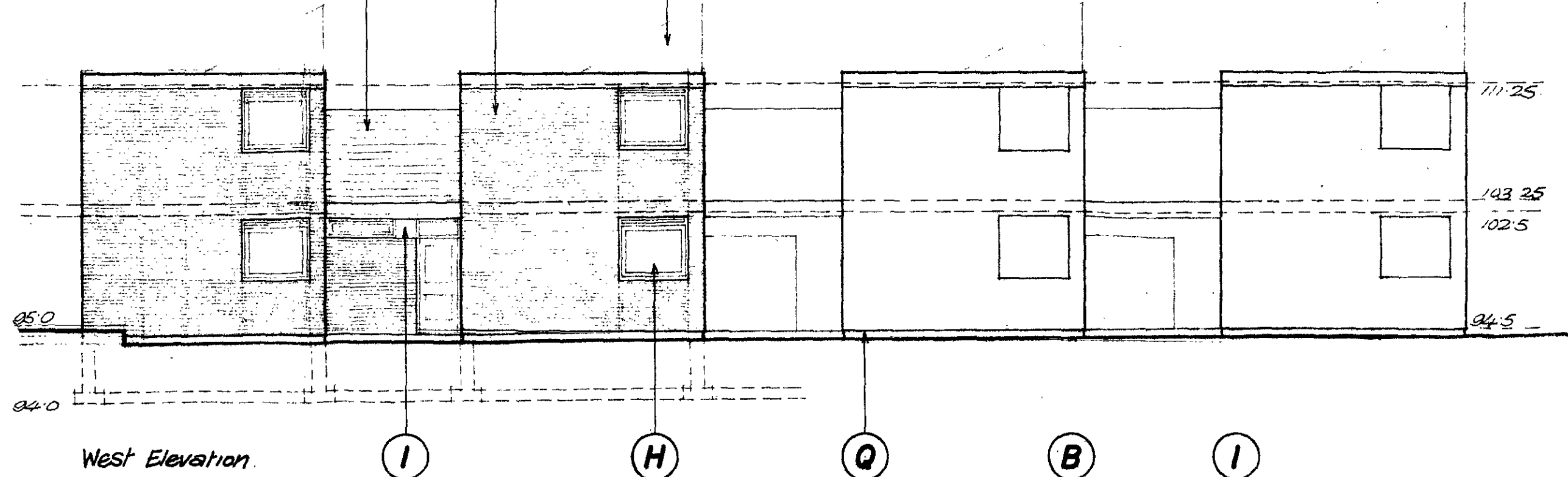
GROUND FLOOR PLAN.



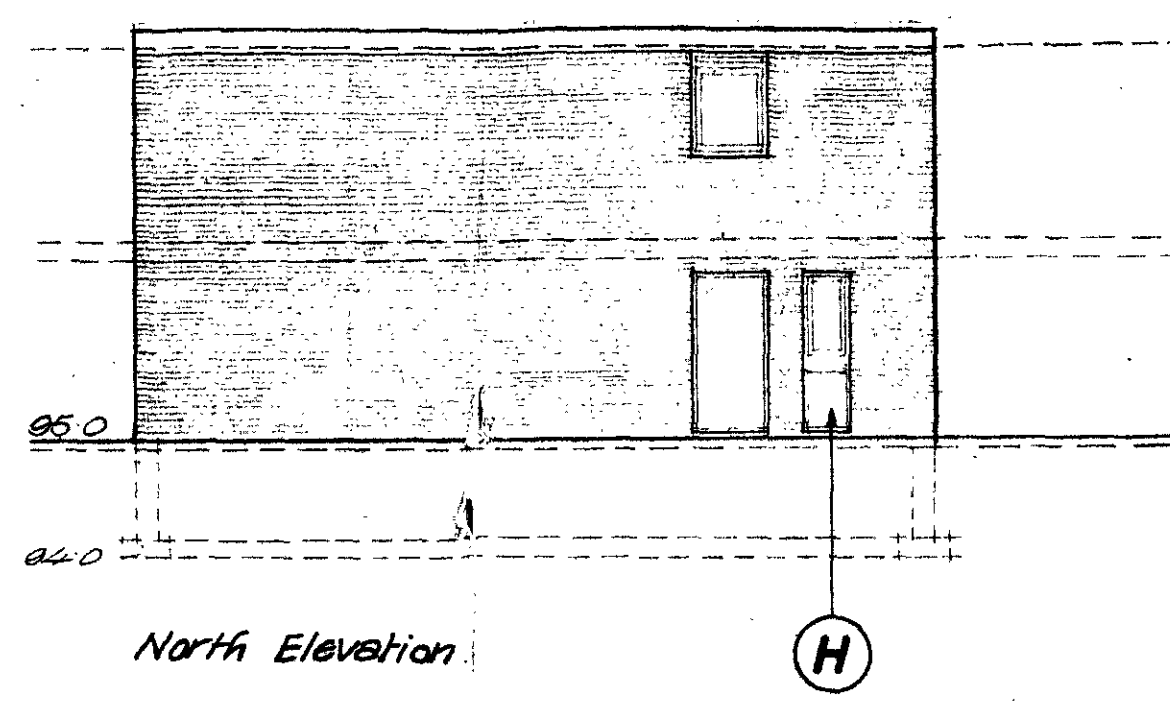
FOUNDATION PLAN.



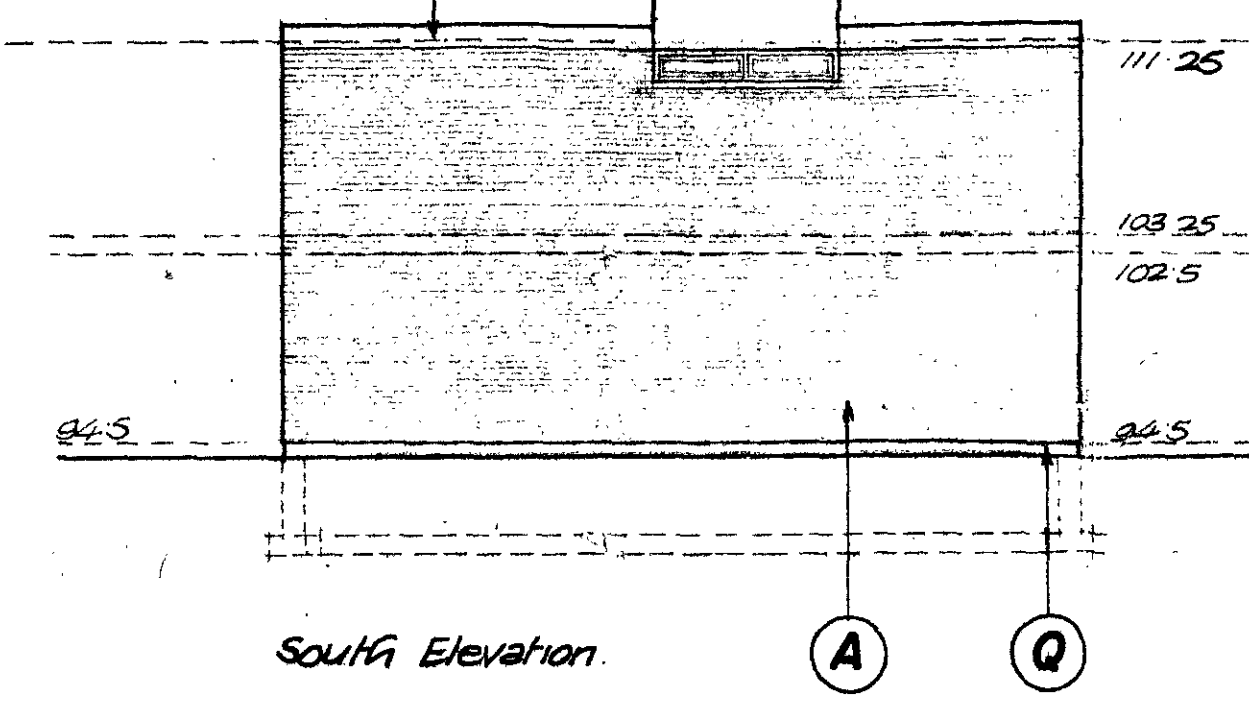
East Elevation.



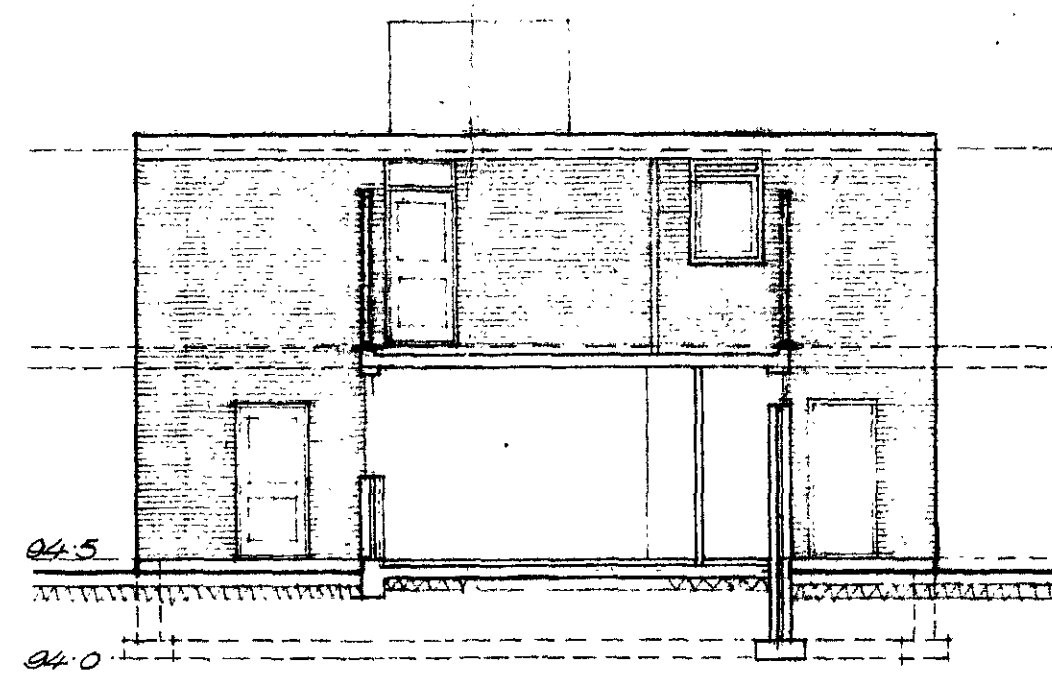
West Elevation.



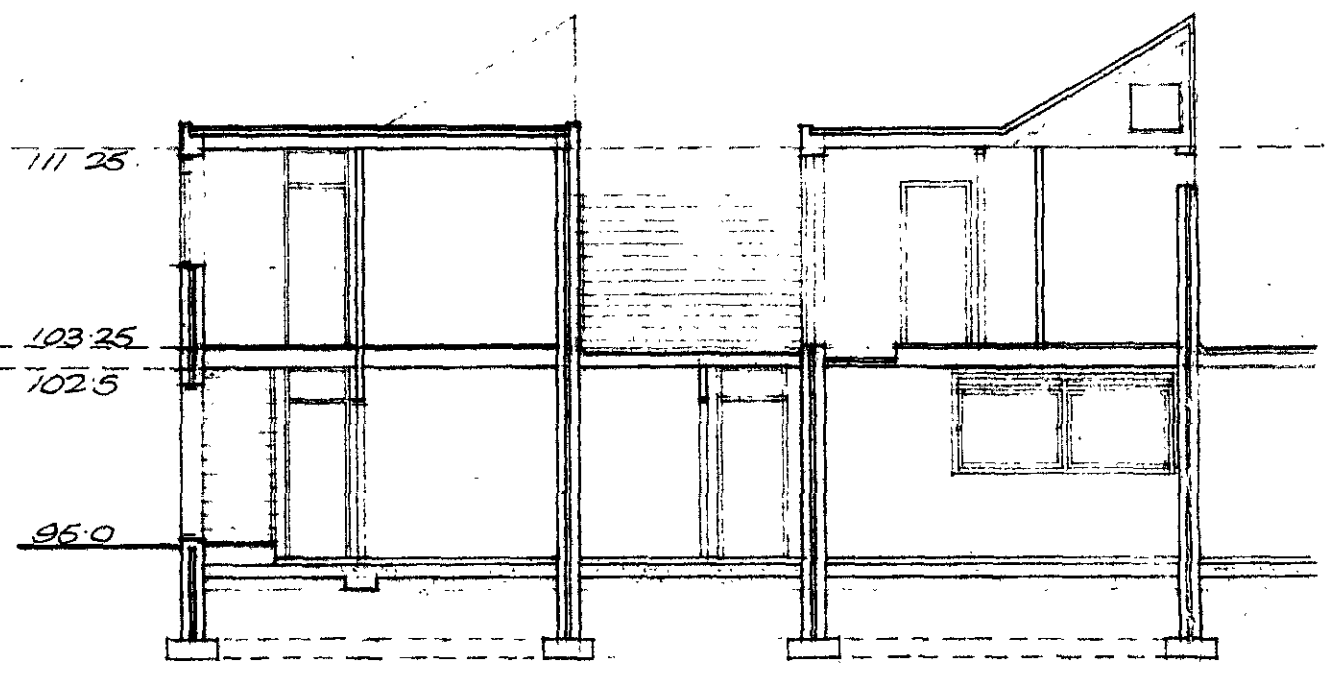
North Elevation.



South Elevation.



Section A-A.

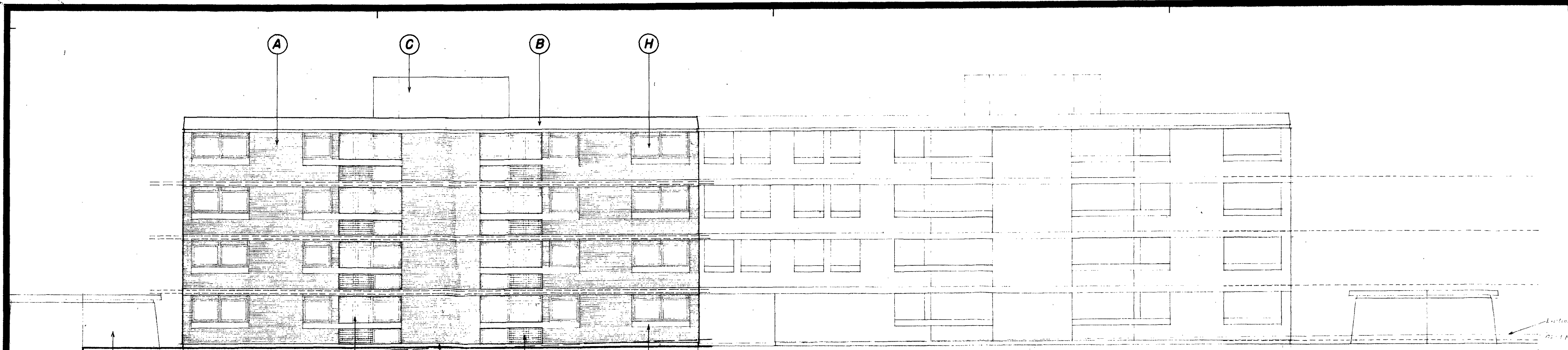


Section B-B.

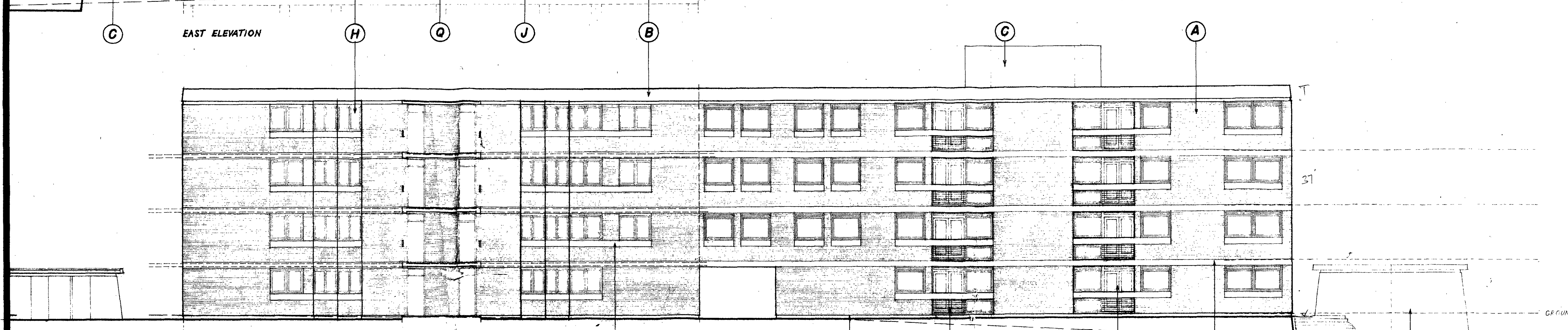
- A FACING BRICK - Ambergate Derbyshire grey facings
- B CONCRETE - either precast with 1/4" white calcine flint aggregate facing or in situ with white cement. Texture from formwork lining
- F TIMBER SCREENS - unpainted cedar
- H WINDOWS & CASEMENT DOORS - unpainted cedar
- I INFILL PANELS - black eternit
- N TANK ROOM - bituminous felt
- Q RECESSED CONCRETE PLINTH - painted black



| SECTIONS MODIFIED | B | N/S | 8/2/62 |
|--|--------------|---------|---------|
| ELEVATIONS MODIFIED | A | W/S | 10/1/62 |
| Revision | No. | Initial | Date |
| Drawn | J.C. | | 21.9.62 |
| Scale | 1/8" = 1' 0" | | |
| Drawing | 569/93 | | |
| J. M. AUSTIN-SMITH & PARTNERS CHARTERED ARCHITECTS 29 SACKVILLE STREET, W.I. REG 6183-5 | | | |
| Revision Index | | | |

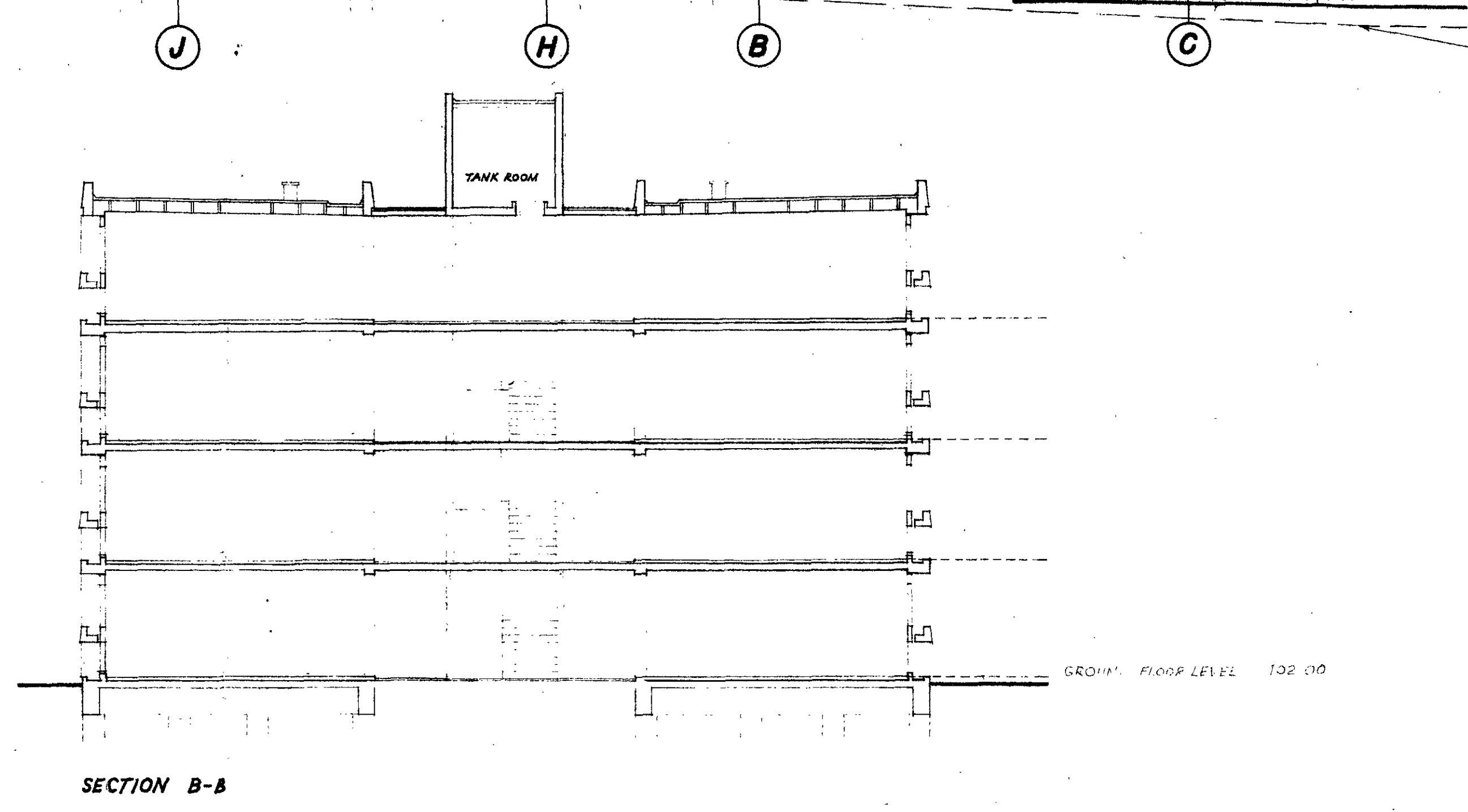
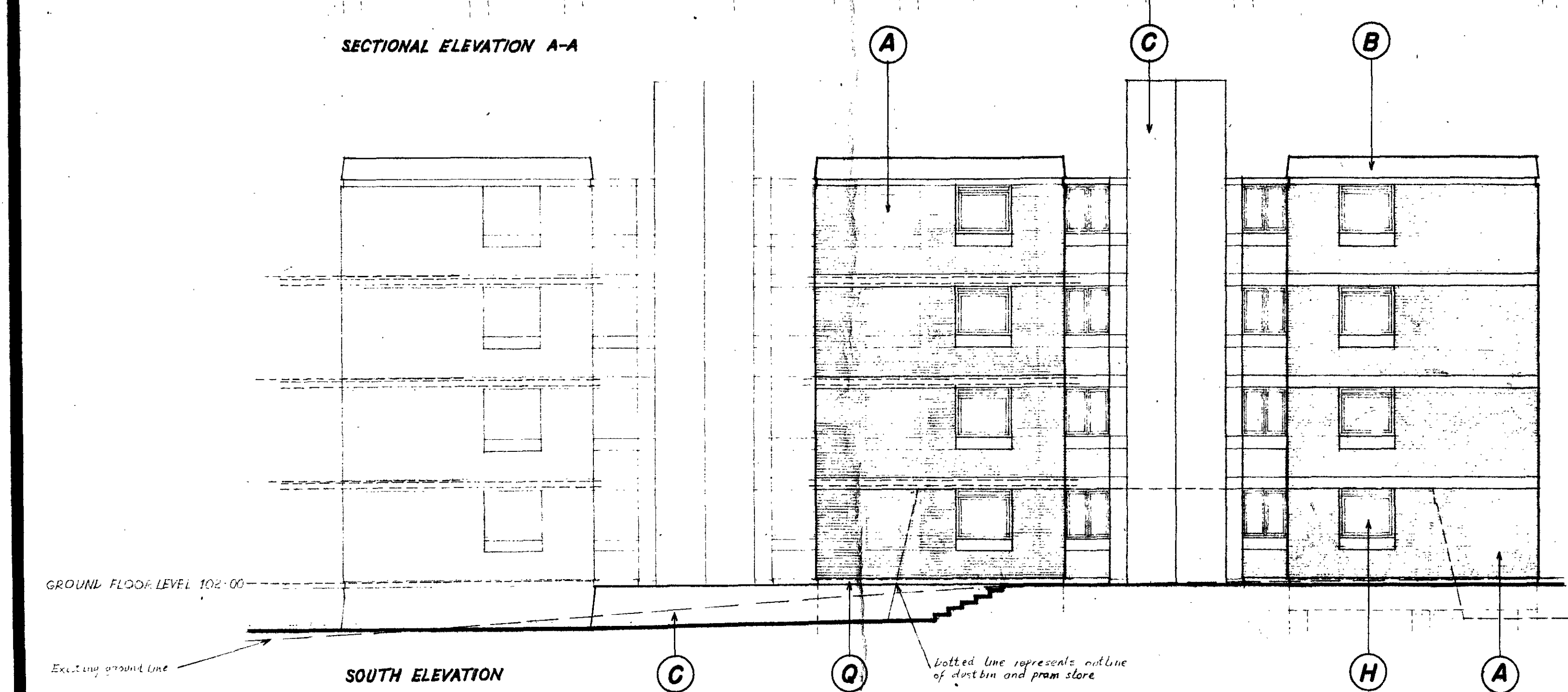


- A** FACING BRICK - Ambergate Derbyshire grey facings
- B** CONCRETE - either precast with 46" white calcine flint aggregate facing or in situ with white cement. Texture from formwork lining
- C** IN SITU CONCRETE - exposed aggregate facing
- H** WINDOWS & CASEMENT DOORS - unpainted cedar
- J** RAILING - unpainted aluminium
- Q** RECESSED CONCRETE PLINTH - painted black



EAST ELEVATION

SECTIONAL ELEVATION A-A



SOUTH ELEVATION

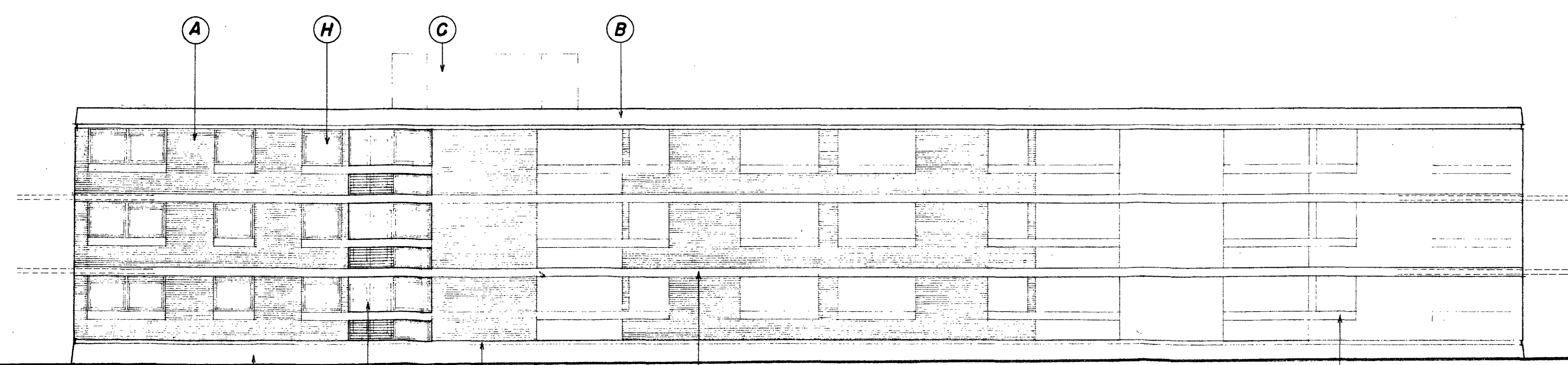
SECTION B-B

Dotted line represents outline of duct bin and prism store

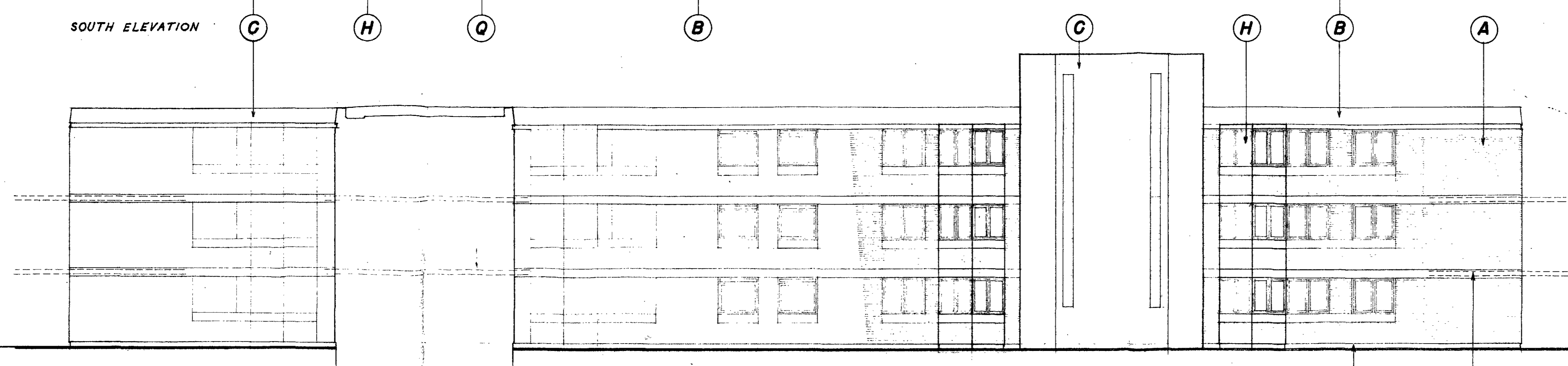
TP/BR/SC
GROUP
15 FEB 1962

| Revision | No. | Initial | Date |
|--|-----|-----------|----------|
| STAIRCASE TOWER HEIGHT ALTERED | A | NJS | 9/1/62 |
| STORE BAYS MODIFIED | | | |
| CAMDEN TOWN NO 1 SITE FOR ST PANCRAS BOROUGH COUNCIL | | | |
| Drawing | | JC | 22/11/61 |
| Scale | | 1" = 8'0" | |
| Drawing | | 569/97 | |
| J. M. AUSTIN-SMITH & PARTNERS CHARTERED ARCHITECTS 29 SAOKVILLE STREET, W.I. REG 6183-5 | | | |
| Revision Index | | | |

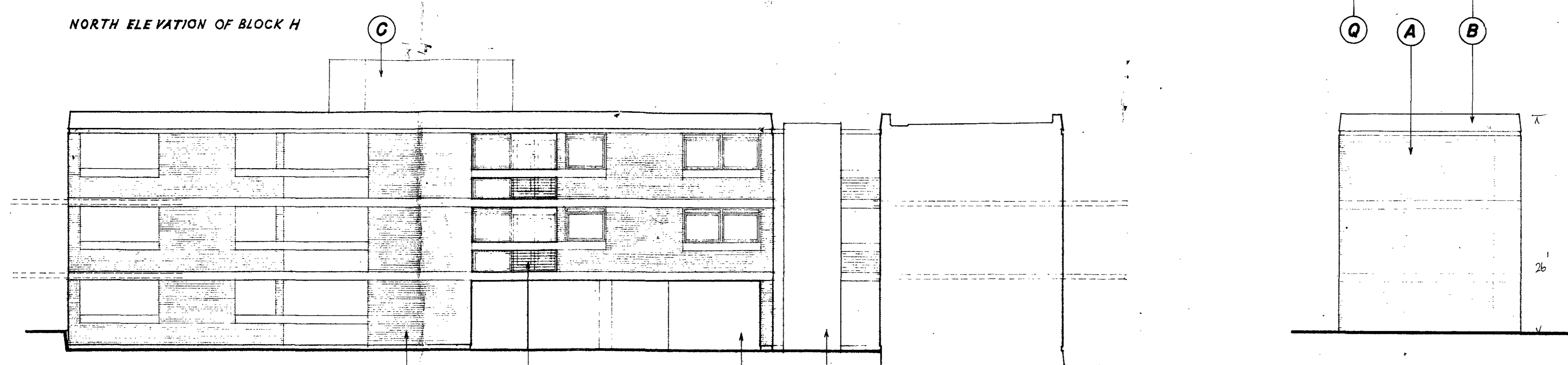
- A** FACING BRICK - Ambergate Derbyshire grey facings
- B** CONCRETE - either precast with 70% white calcine flint aggregate facing
- or in situ with white cement. Texture from formwork lining
- C** IN SITU CONCRETE - exposed aggregate facing
- E** BLOCKWORK - painted white
- H** WINDOW & CASEMENT DOORS - unpainted cedar
- J** RAILINGS - unpainted aluminium
- Q** RECESSED CONCRETE PLINTH - painted black



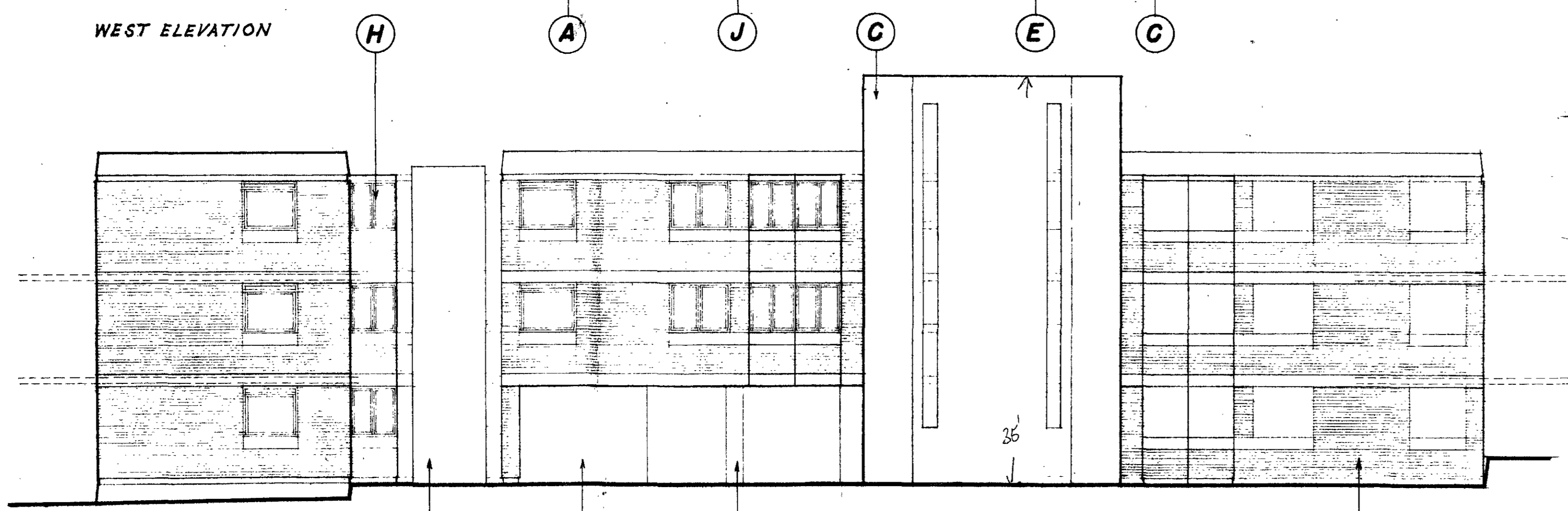
SOUTH ELEVATION



NORTH ELEVATION OF BLOCK H



NORTH ELEVATION OF BLOCK G



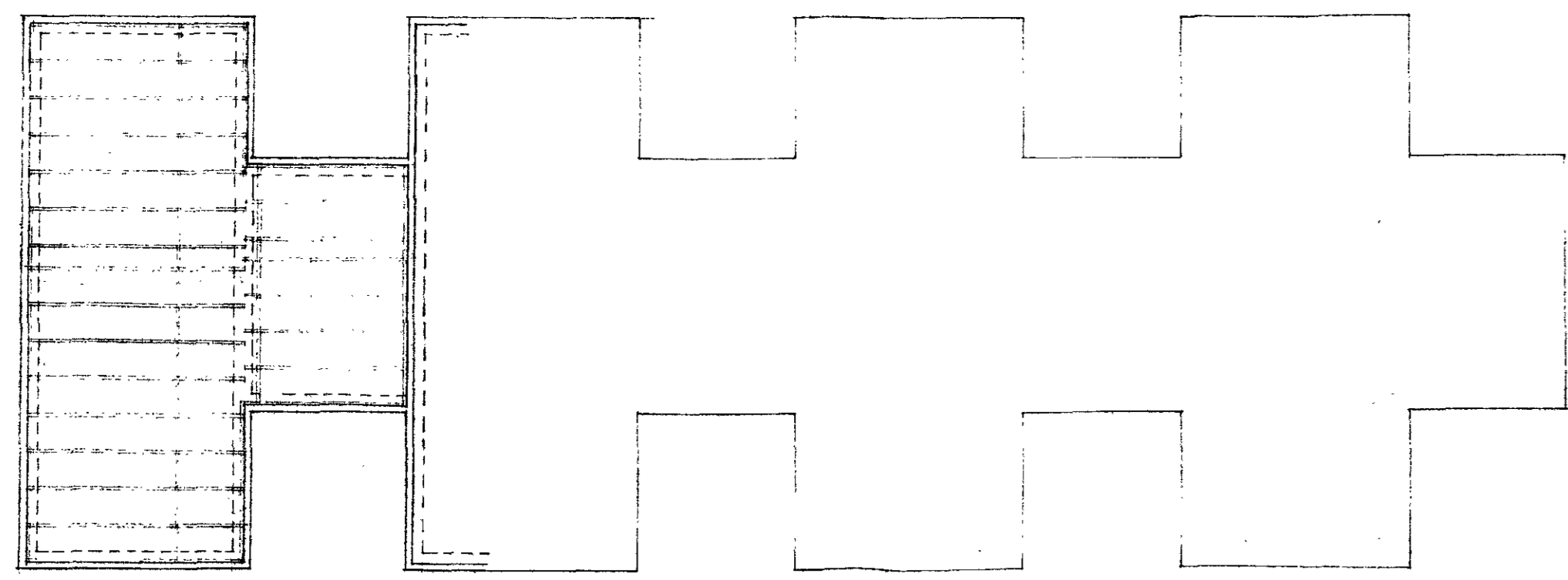
EAST ELEVATION



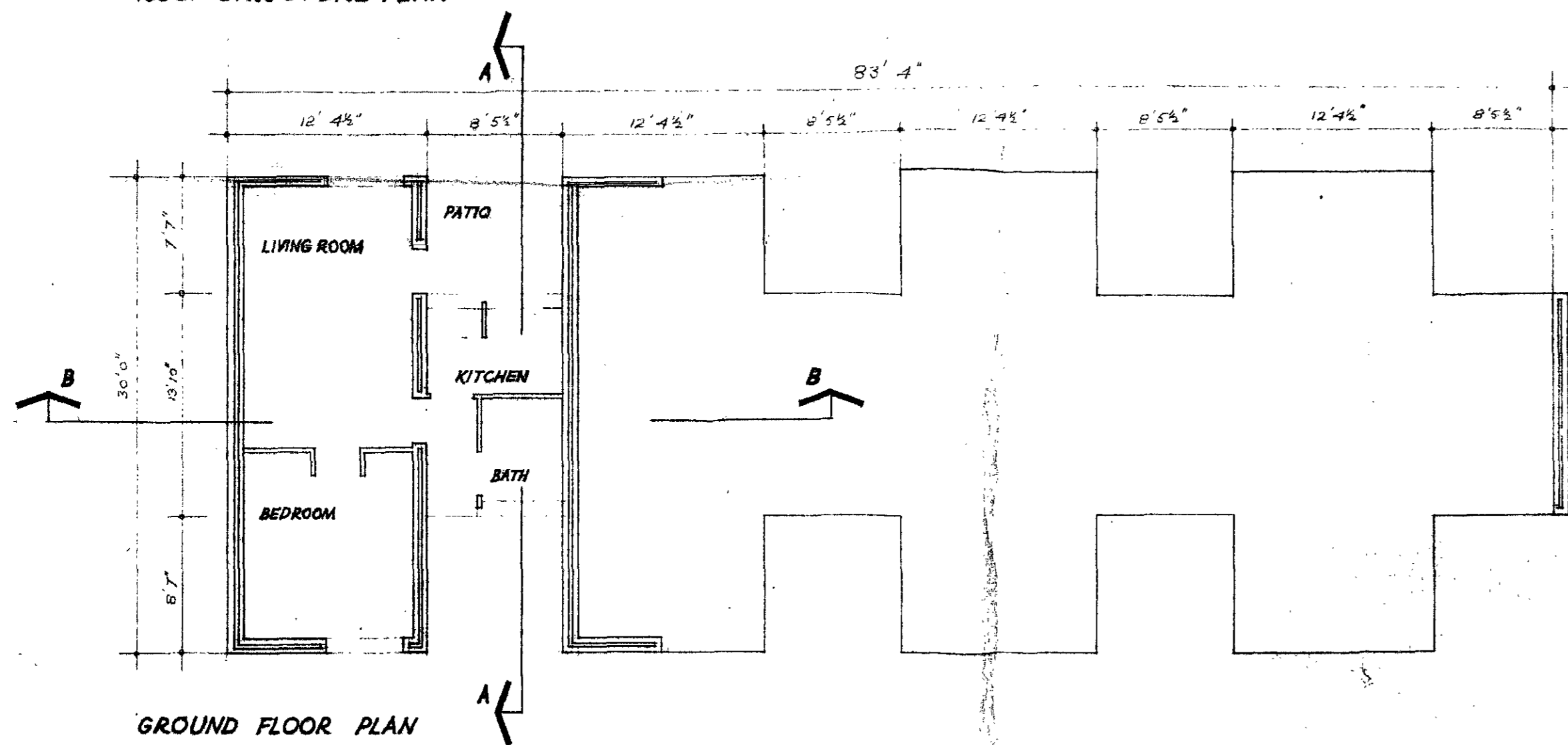
12.572

TP/BR/SC
GP 115
15 FEB 1962
2284
2084

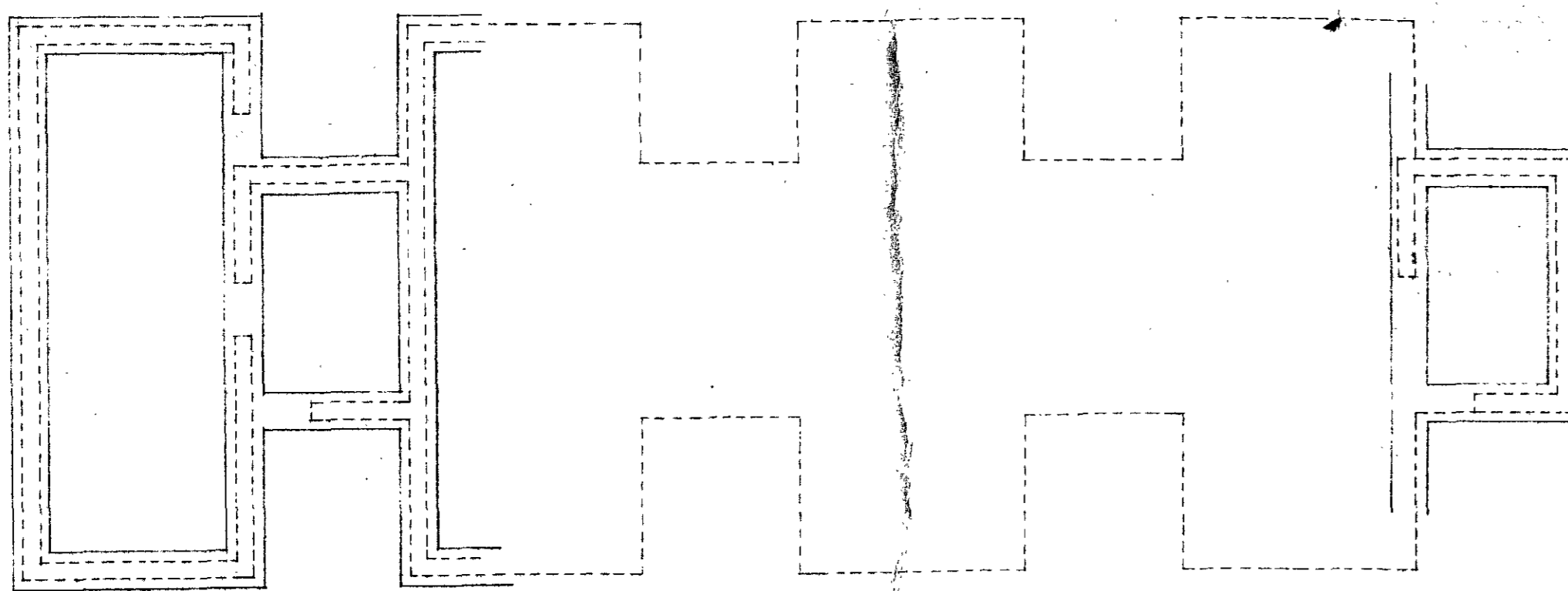
| | | | | |
|---|-----|-----------------|--------|--------|
| DRAWING COMPLETED GENERALLY (SEE DRAWING RECORD CARD) | | A | WJS | 9/1/62 |
| Revision | No. | Initial | Date | |
| | | JC | 8-1-62 | |
| CAMDEN TOWN NO 1 SITE FOR ST PANCRAS BOROUGH COUNCIL | | Scale 1" = 8'0" | | |
| BLOCKS G & H ELEVATIONS | | Drawing 569/98 | | |
| J. M. AUSTIN-SMITH & PARTNERS CHARTERED ARCHITECTS 29 SAOKVILLE STREET, W.I. REG 6183-5 | | Revision Index | | |



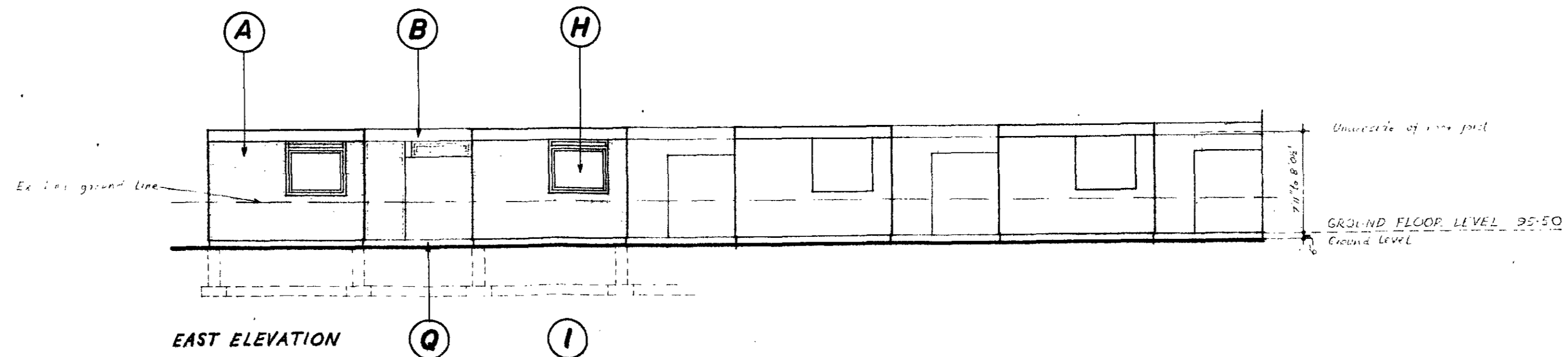
ROOF STRUCTURE PLAN



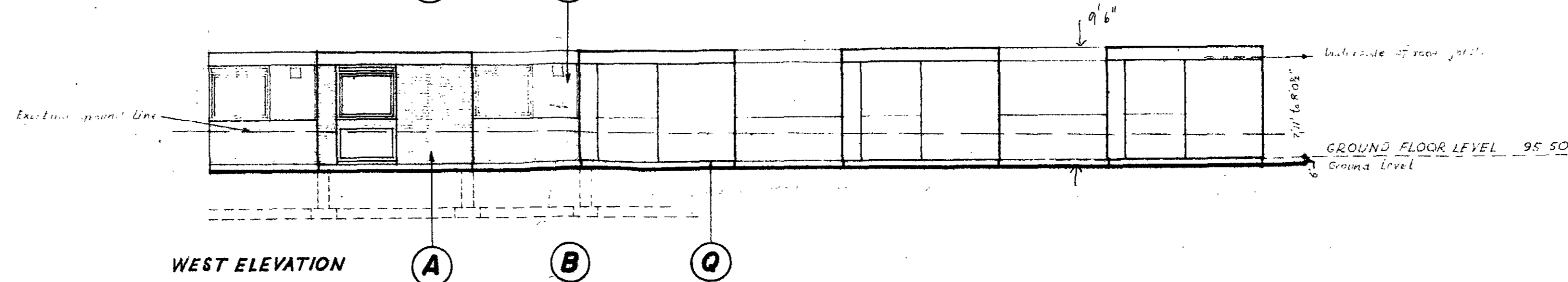
GROUND FLOOR PLAN



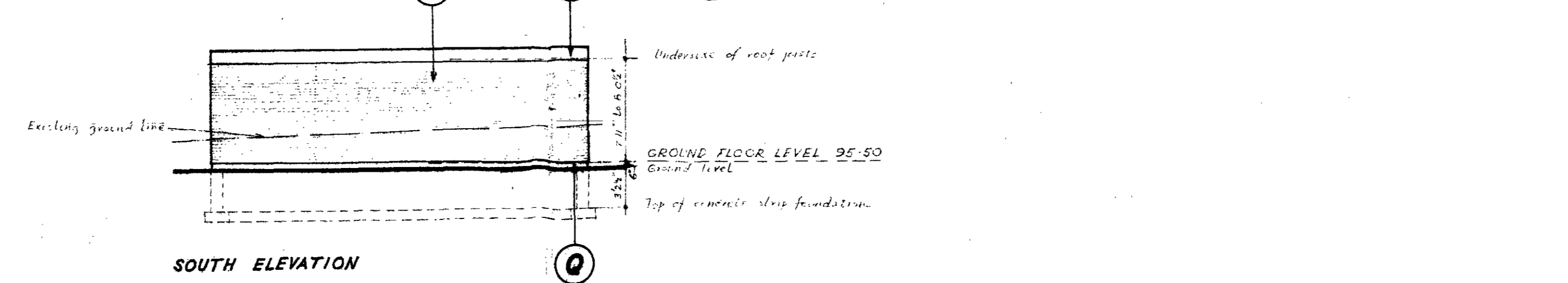
FOUNDATION PLAN



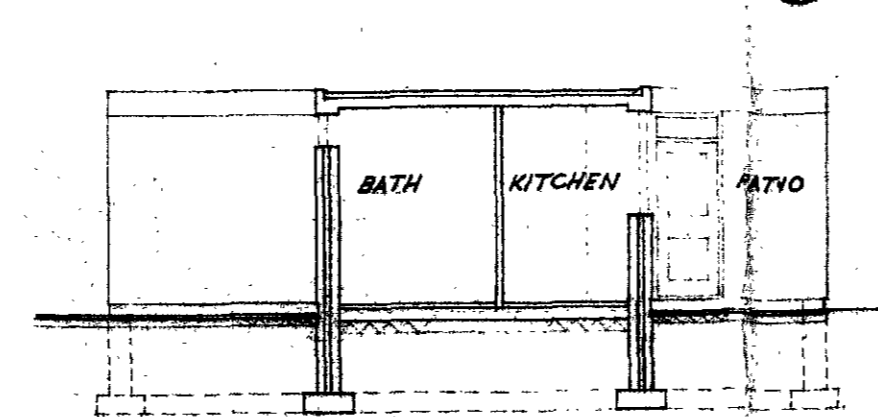
EAST ELEVATION



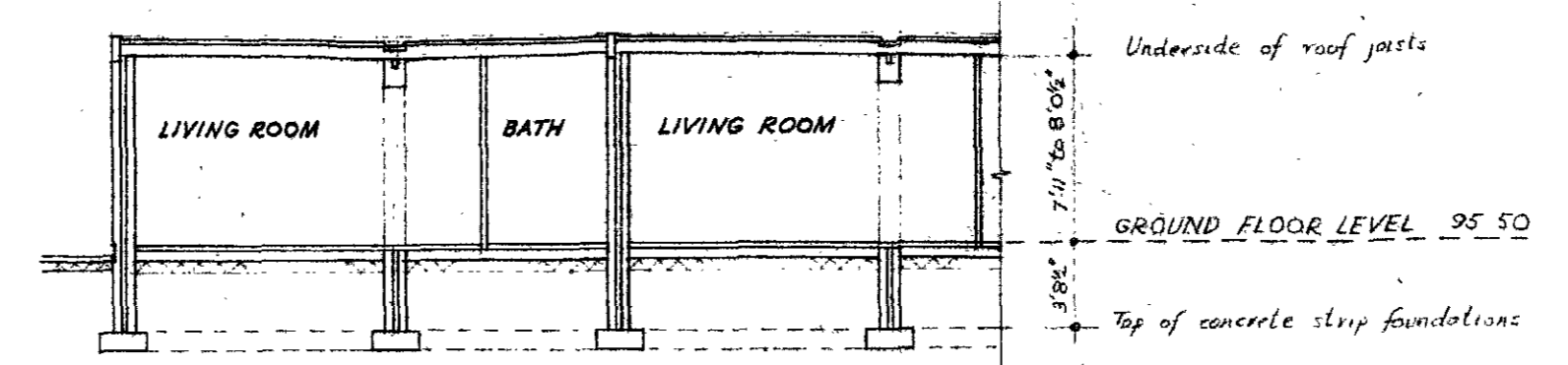
WEST ELEVATION



SOUTH ELEVATION



SECTION A-A

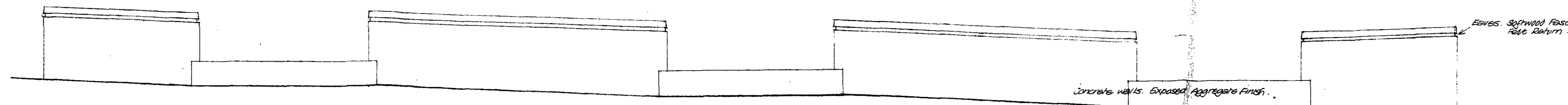


SECTION B-B

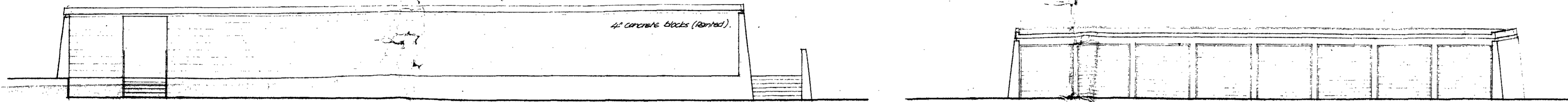
- A** FACING BRICK - Ambergate Derbyshire grey facings
- B** CONCRETE - either precast with 3/8" white calcine flint aggregate facing or in situ with white cement. Texture from formwork lining
- H** WINDOWS & CASEMENT DOORS - unpainted cedar
- I** INFILL PANELS - black eternit
- Q** RECESSED CONCRETE PLINTH - painted black

TP/BR/1
GR
15 FEB 1962
250/1

| Revision | No. | Initial | Date |
|---|-----|-----------------|--------------|
| GLASS UNDERCILL PANEL TO LIVING ROOM | A | W/S | 10/1/62 |
| PLAIN PANEL TO LARDER | | | |
| CAMDEN TOWN No 1 SITE FOR ST PANCRAS BOROUGH COUNCIL | | Drawn WJS | Date 6.12.61 |
| BLOCK D: OLD PEOPLES HOMES | | Scale 1" = 8'0" | |
| J. M. AUSTIN-SMITH & PARTNERS CHARTERED ARCHITECTS 29 SAOKVILLE STREET, W.I. REG 6183-5 | | Drawing 569/99 | |
| Revision Index | | | |

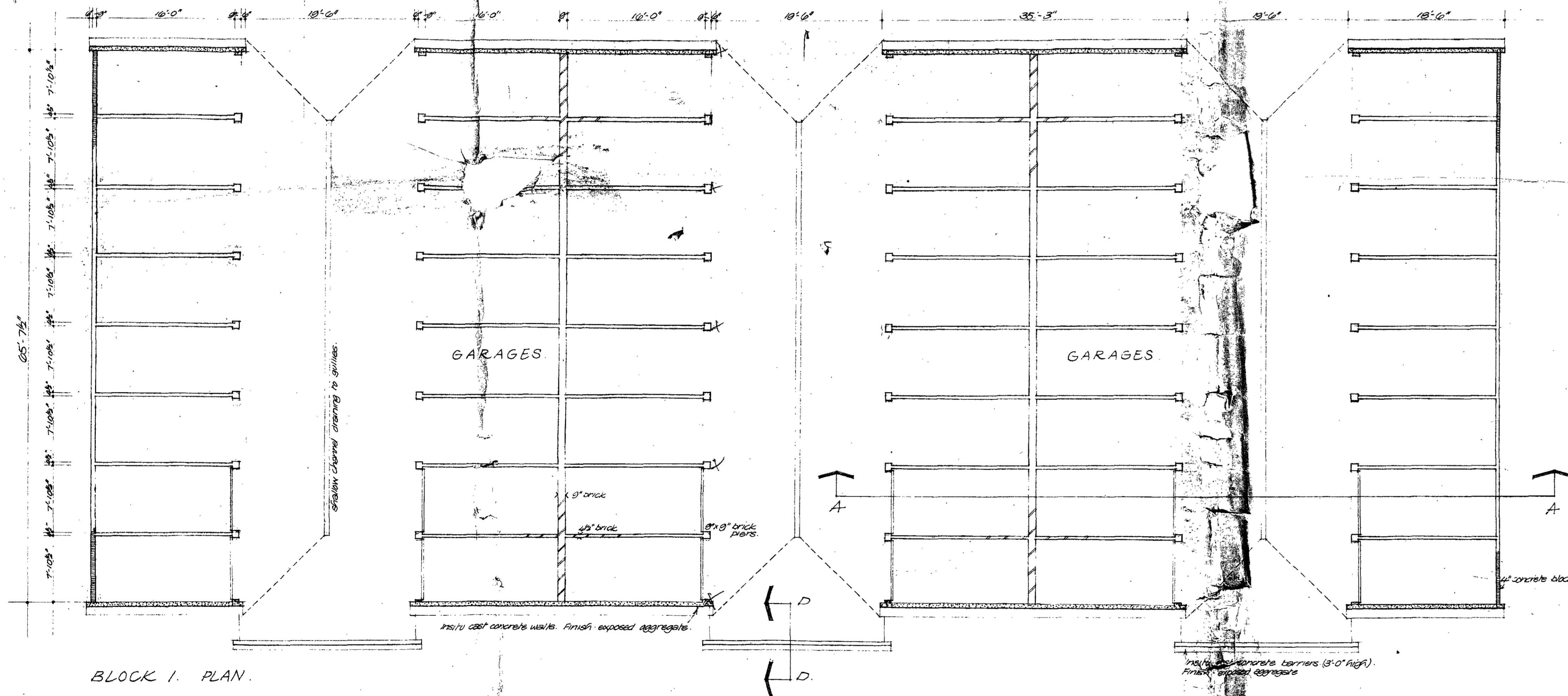


West Elevation, Block 1

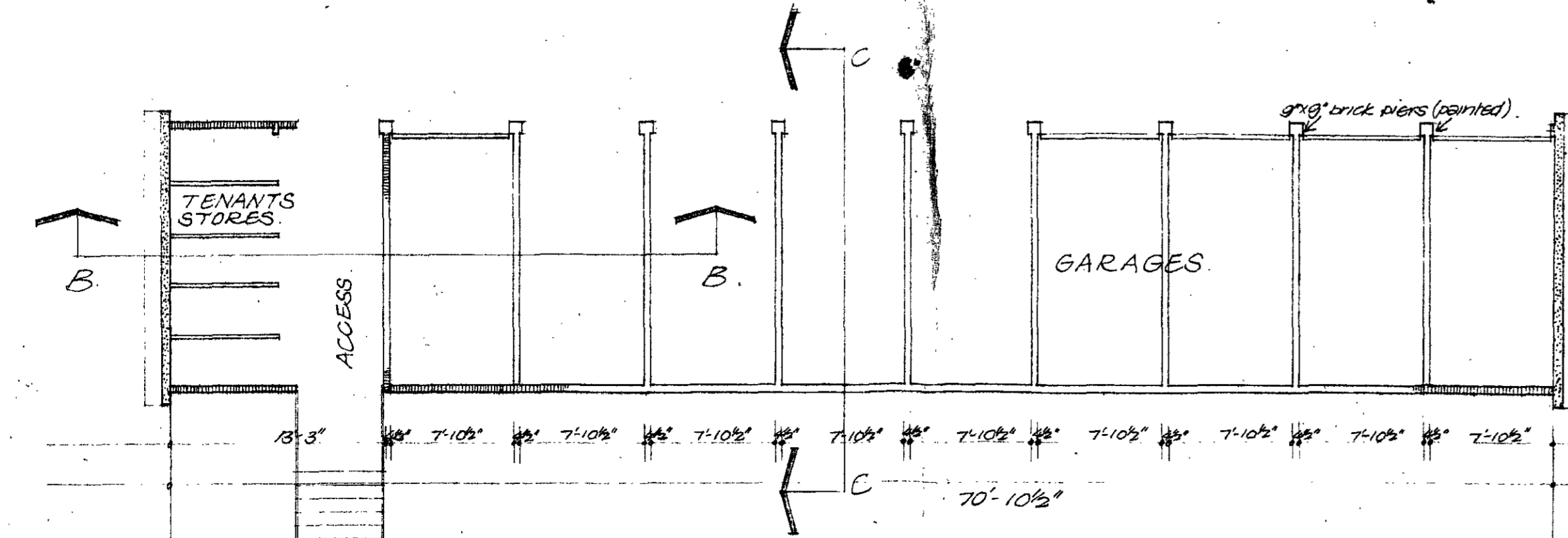


West Elevation, Block 2

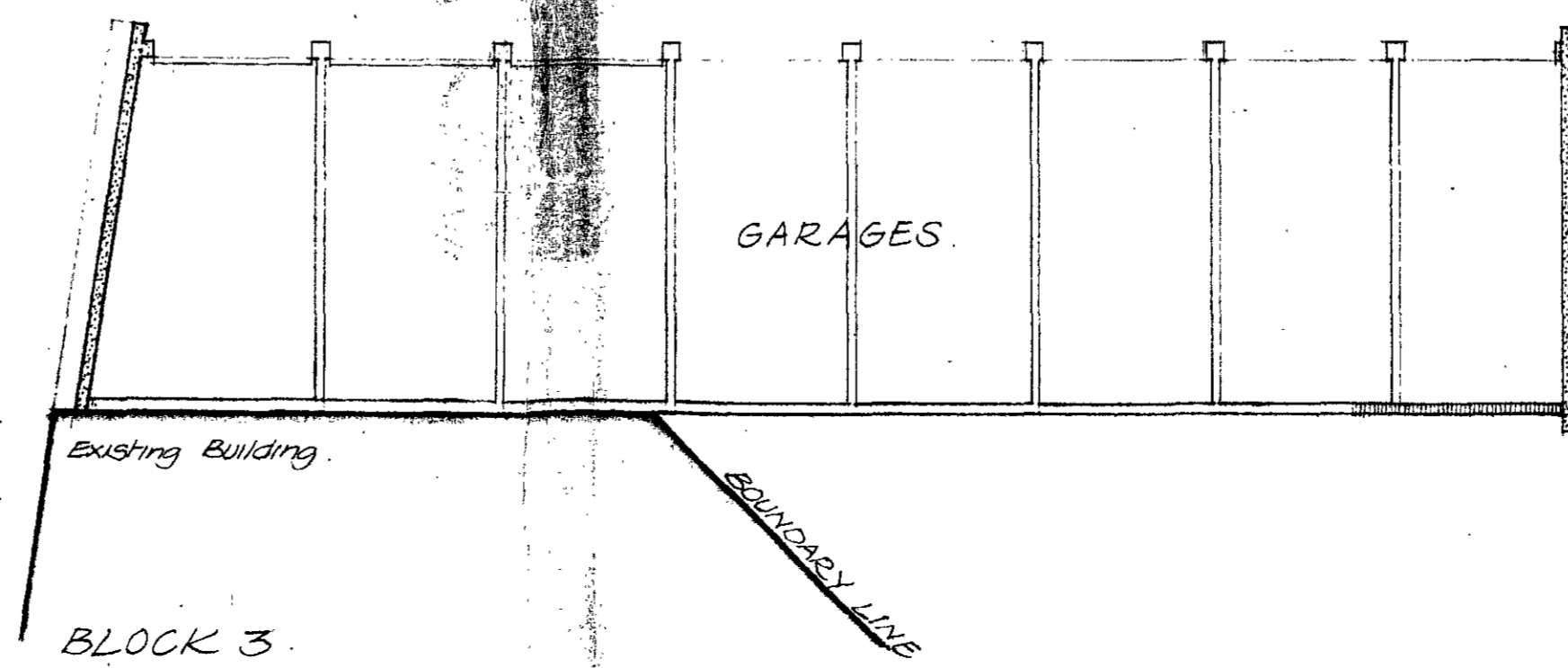
East Elevation, Block 3



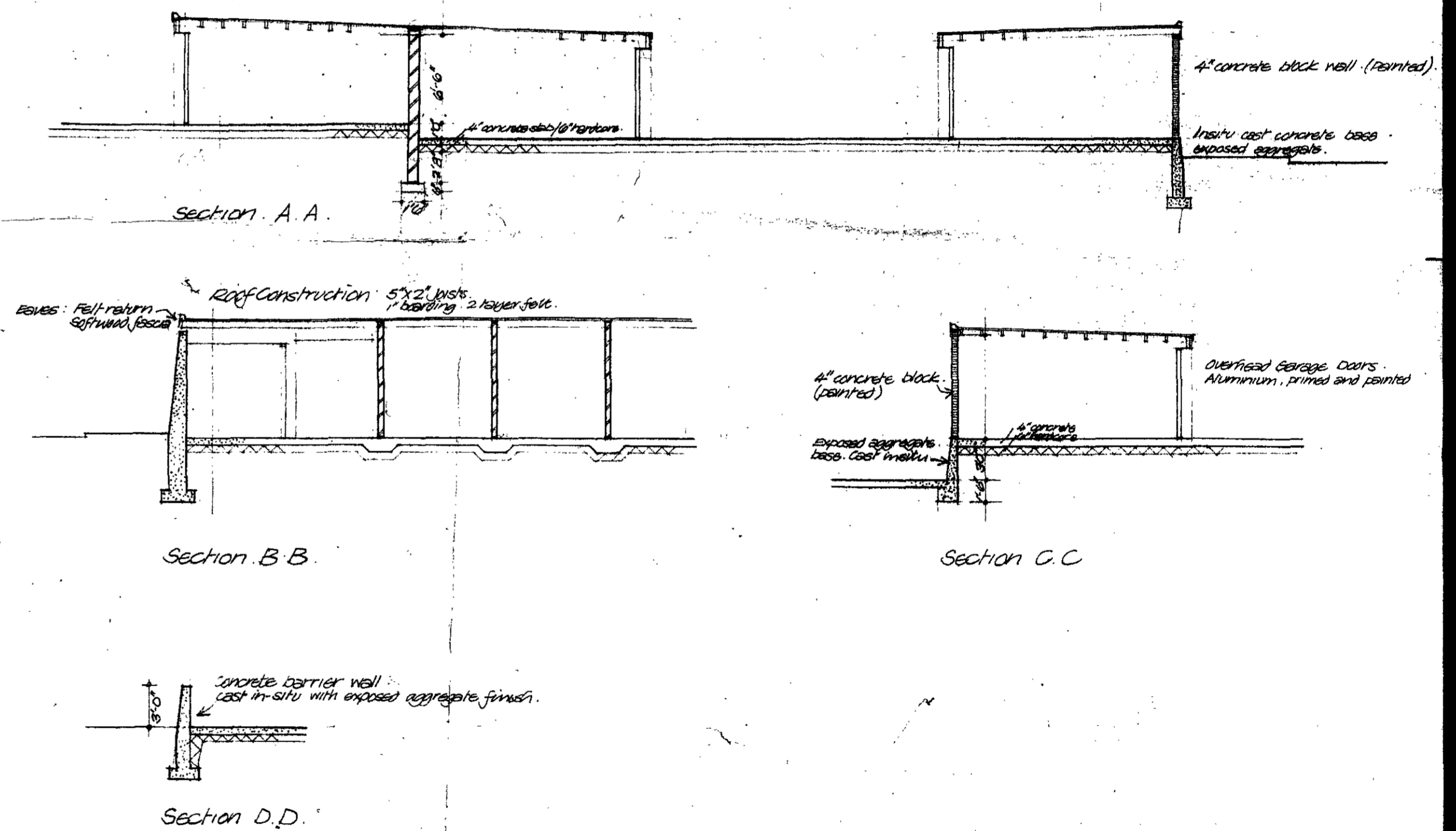
BLOCK 1. PLAN.



BLOCK 2.



BLOCK 3.



| Revision | No. | Initial | Date |
|--|--------------|---------|----------|
| Drawn | T.C. | | 10.11.62 |
| Scale | 1/8" = 1'-0" | | |
| Drawing | 508/102 | | |
| J. M. AUSTIN-SMITH & PARTNERS CHARTERED ARCHITECTS 29 SAOKVILLE STREET, W.I. REG 6183-5 | | | |
| Revision Index | | | |