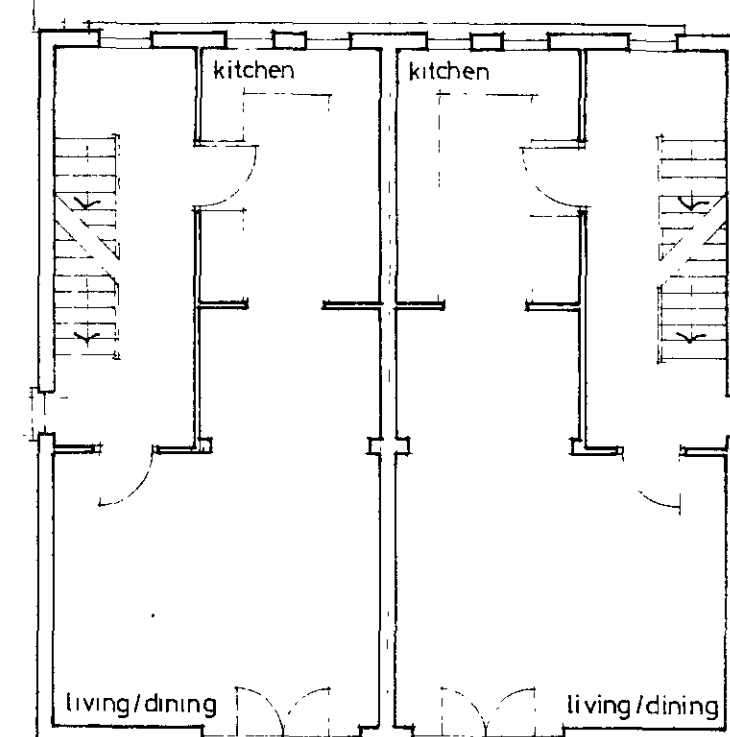
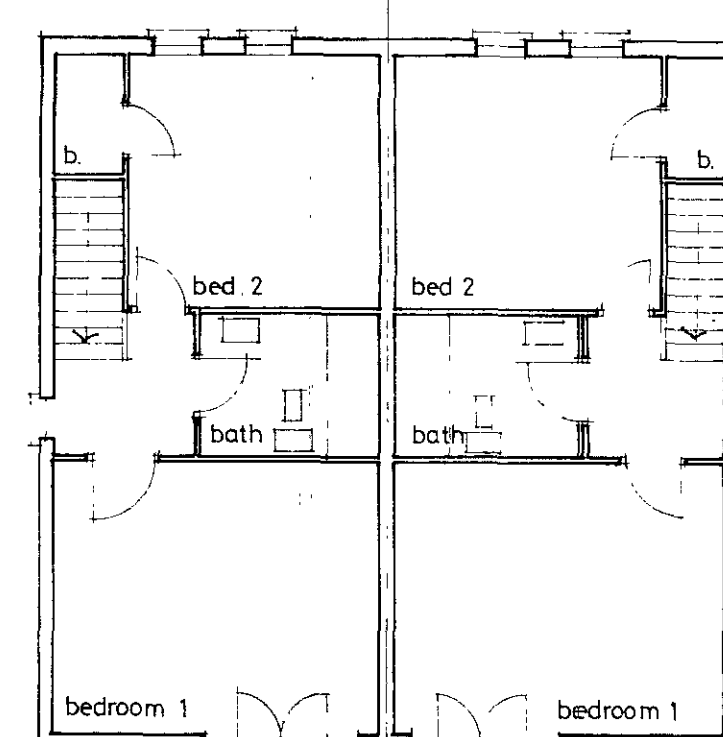


GROUND FLOOR PLAN



FIRST FLOOR PLAN



SECOND FLOOR PLAN



ENTRANCE ARCH  
 (see dwg.no. 861/19)

LONDON BOROUGH OF CAMDEN  
 TOWN AND COUNTRY PLANNING NOTES  
 15 JAN 1987  
 APPROVED  
 PLANS NOT APPROVED  
 ON BEHALF OF THE COUNCIL

WILKINSON & COUGH  
 124 ALDERGATE STREET  
 LONDON EC1  
 237 7727

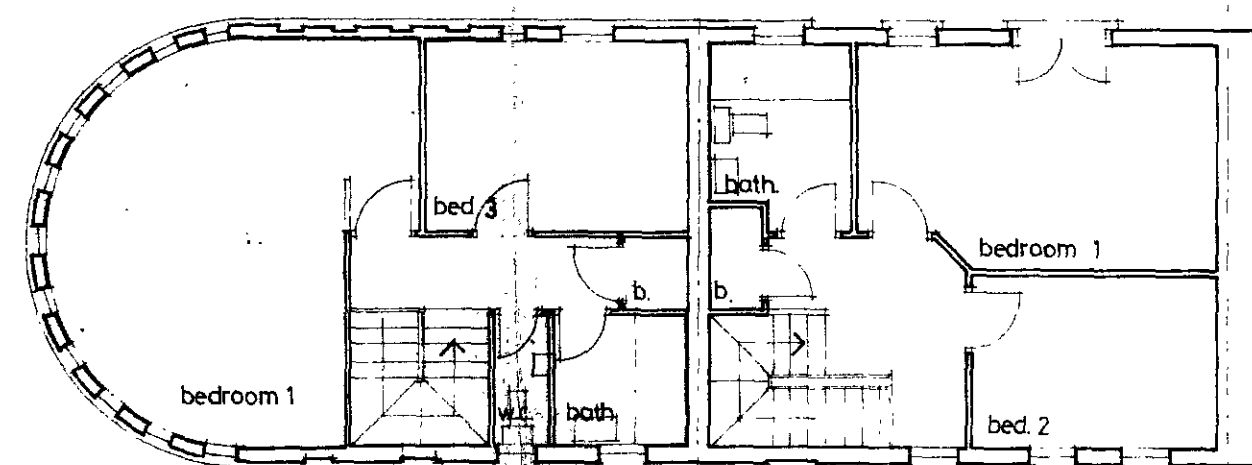
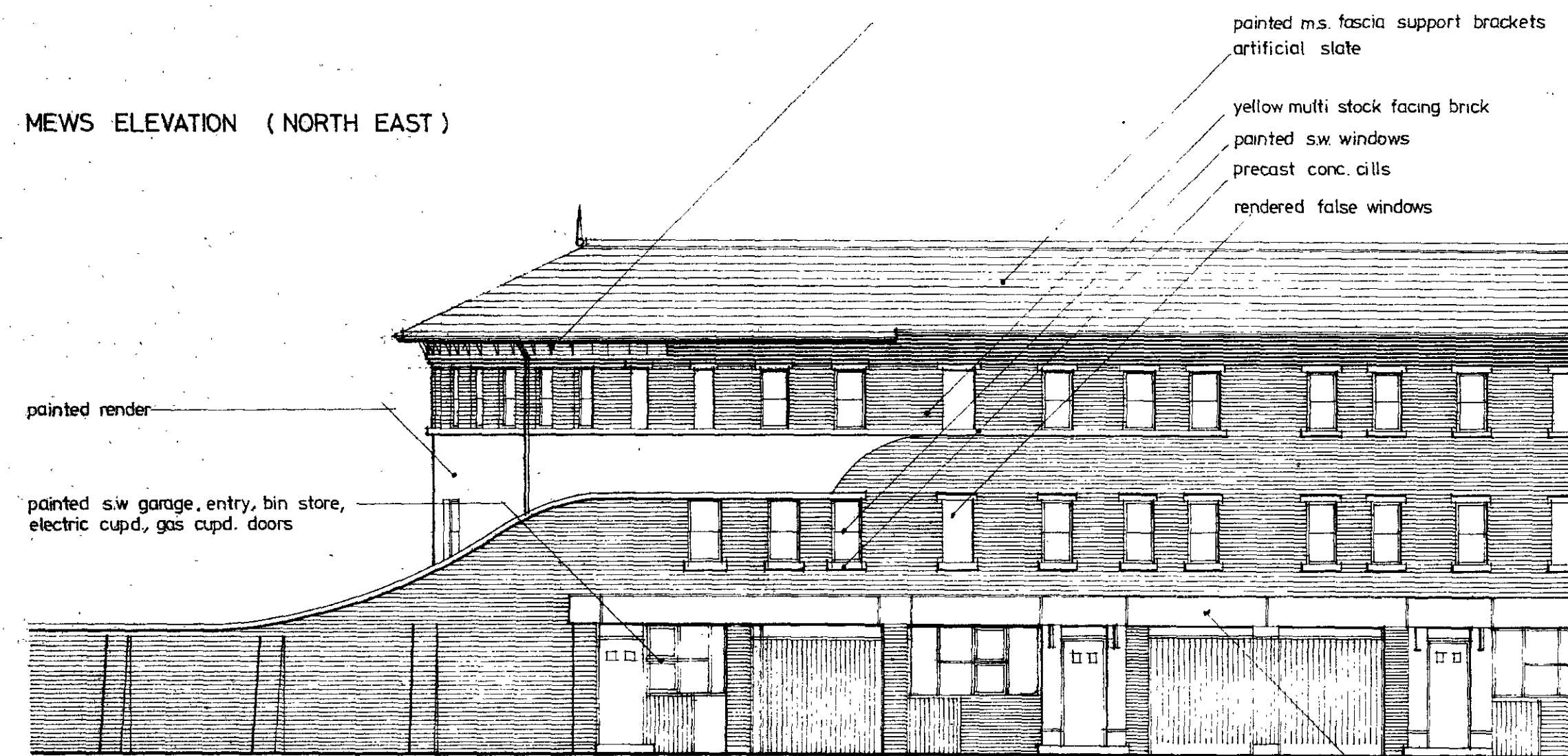
TP 8602026

Date OCTOBER 86 Scale 1:100 861

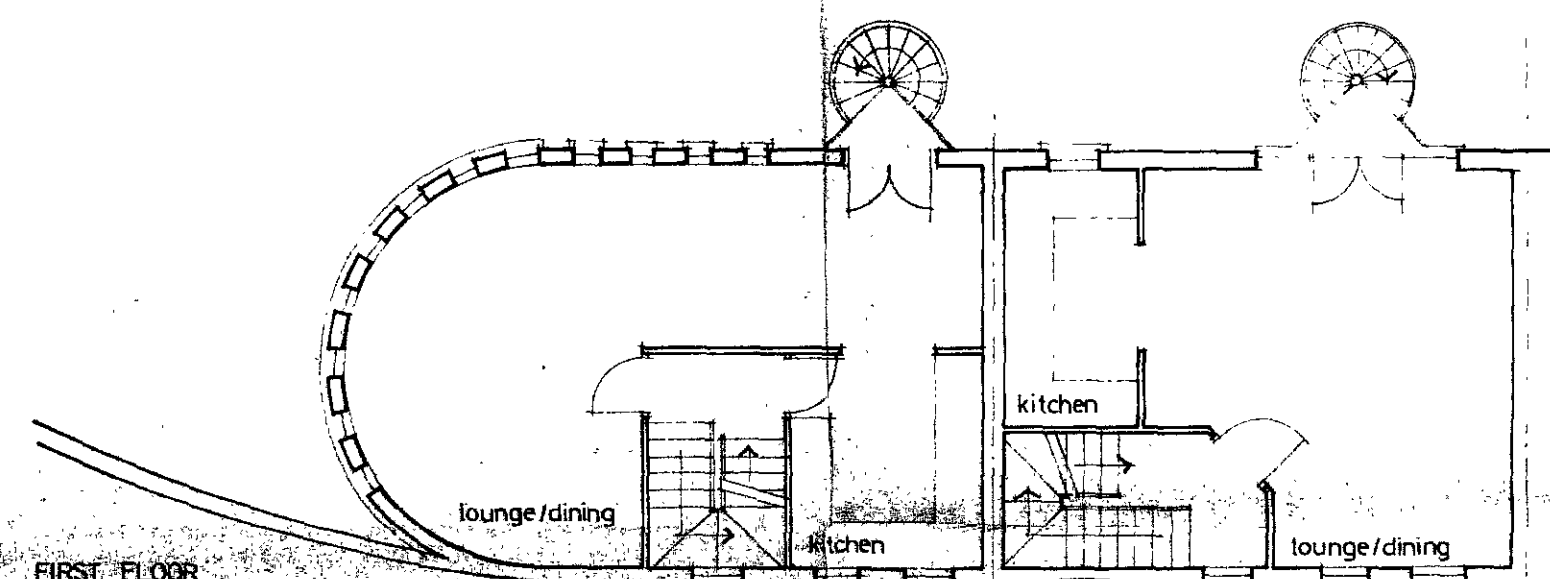
ST. PAUL S MEWS CAMDEN TOWN

HOUSE TYPES D

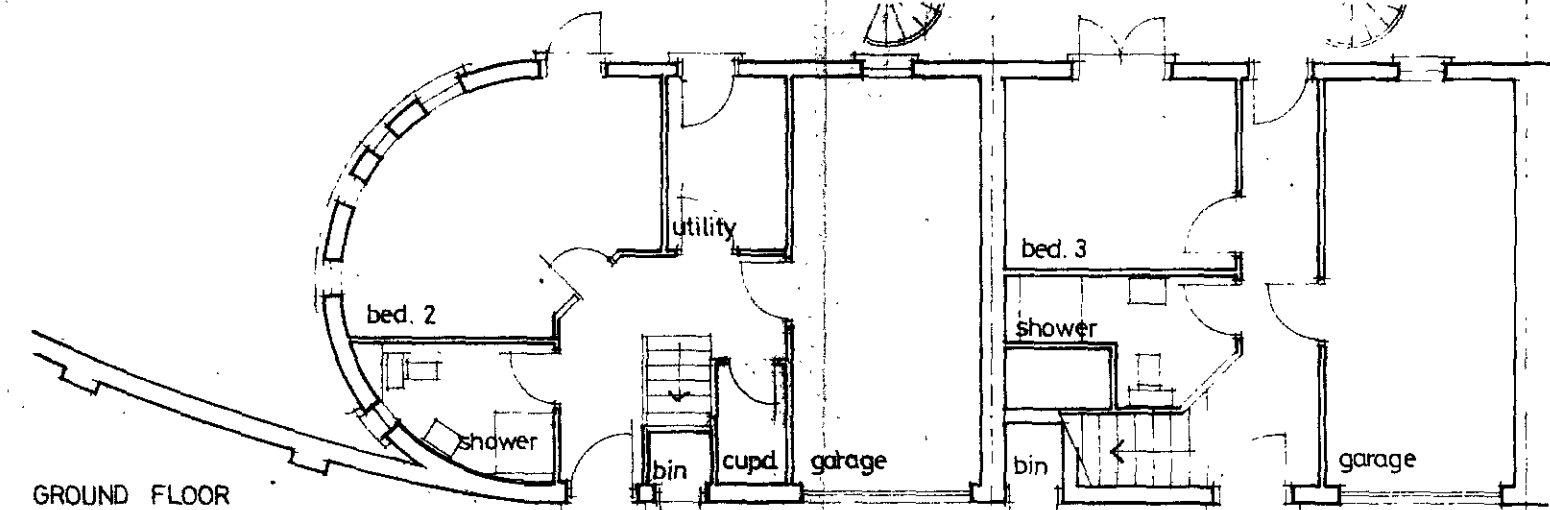
MEWS ELEVATION (NORTH EAST)



SECOND FLOOR



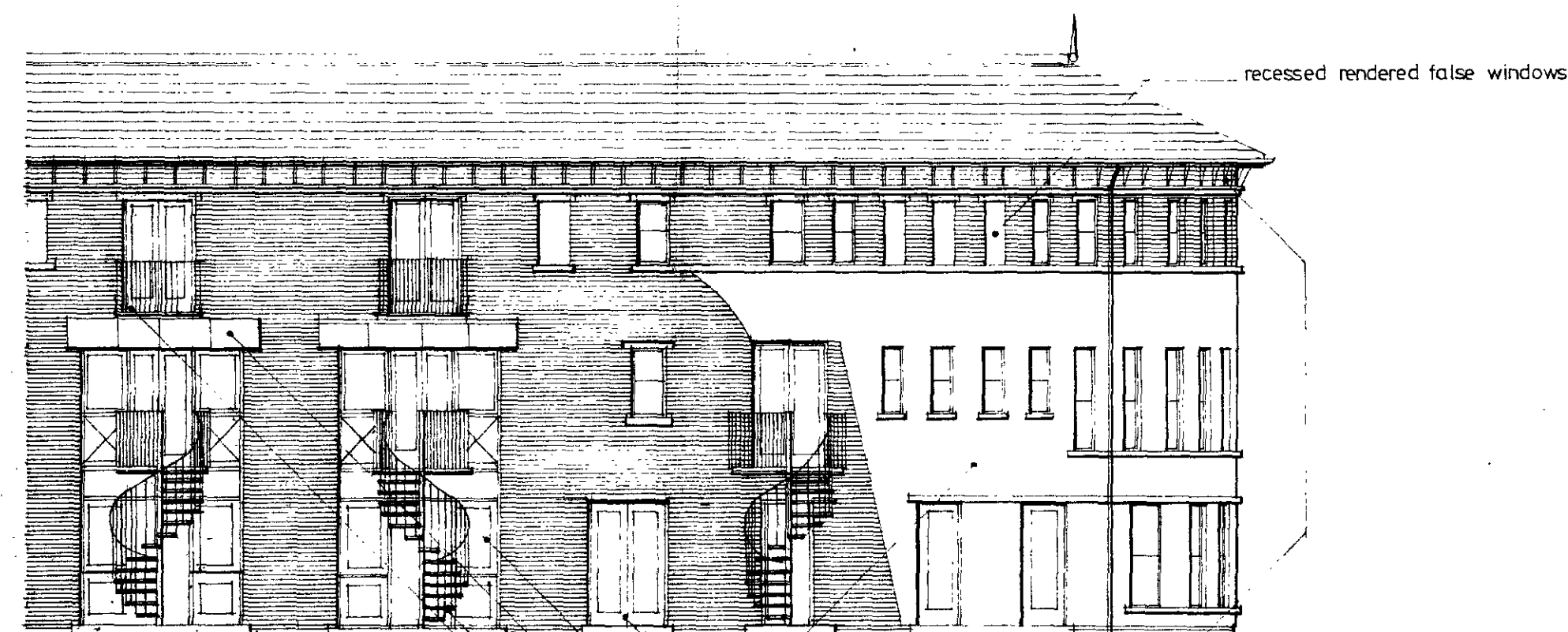
FIRST FLOOR



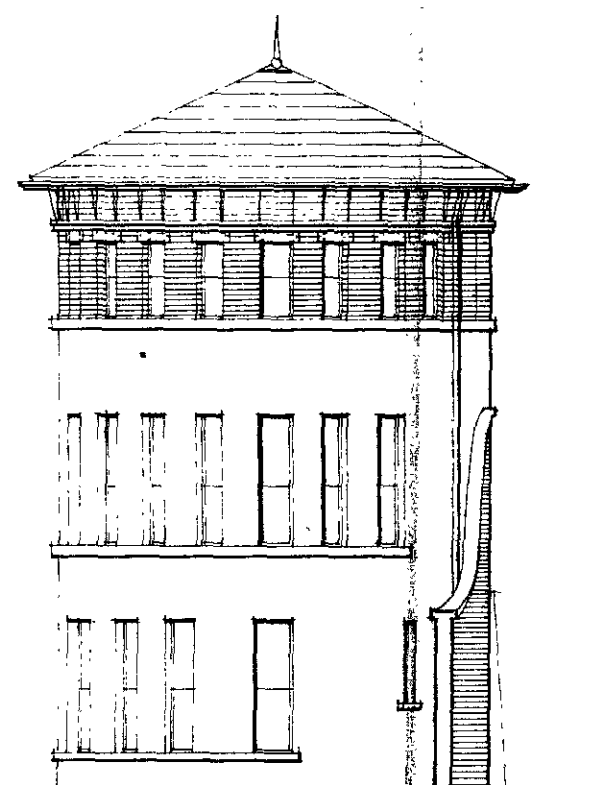
GROUND FLOOR

HOUSE TYPE C HOUSE TYPE B

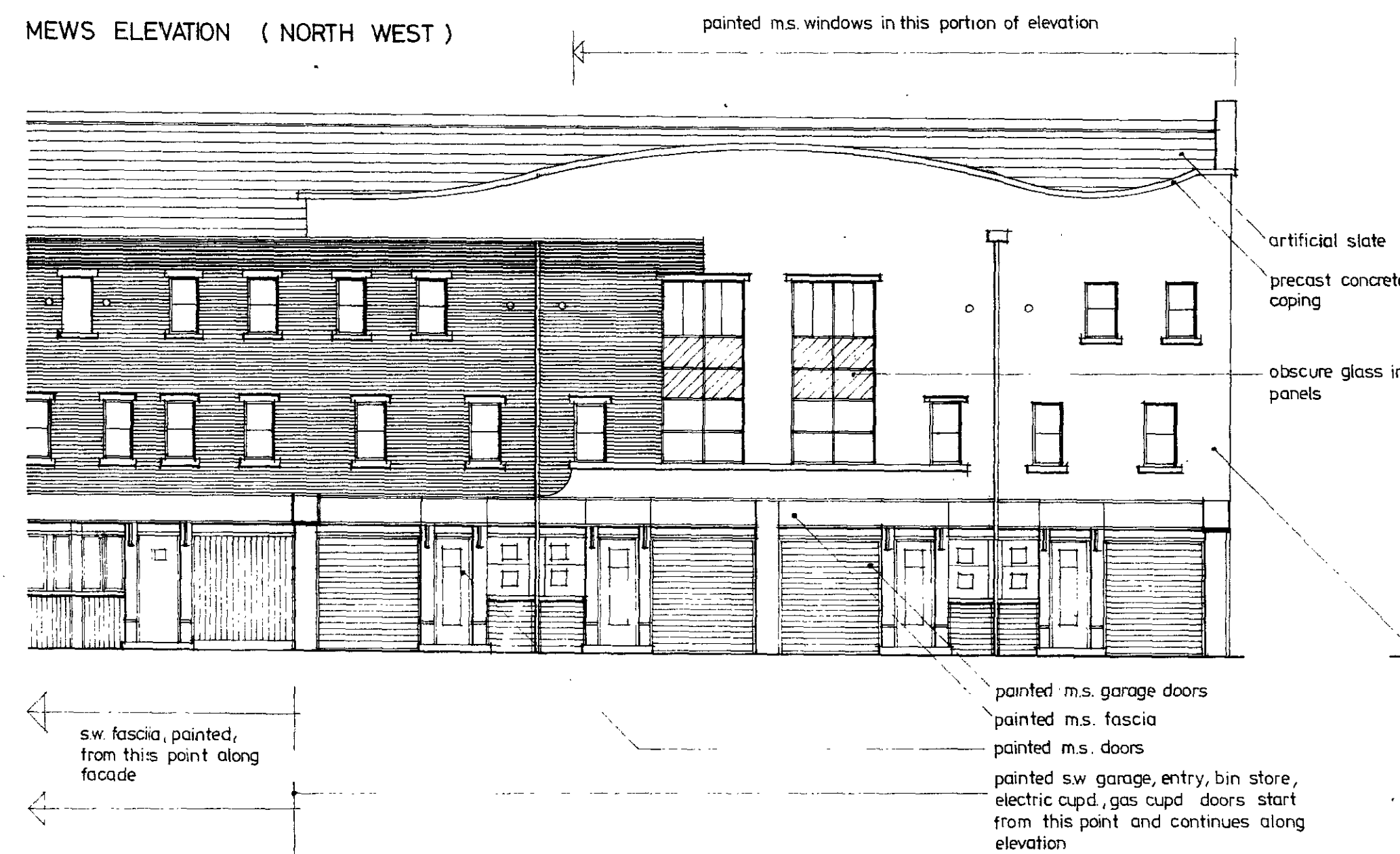
GARDEN ELEVATION (SOUTH EAST)



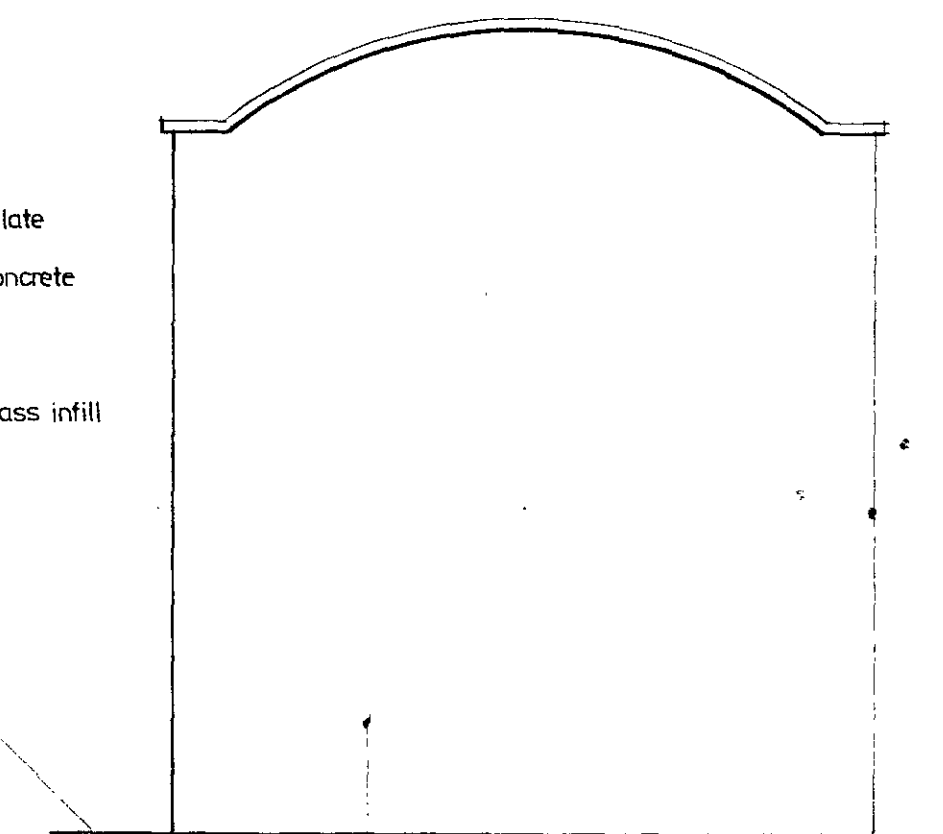
ELEVATION (EAST)



MEWS ELEVATION (NORTH WEST)

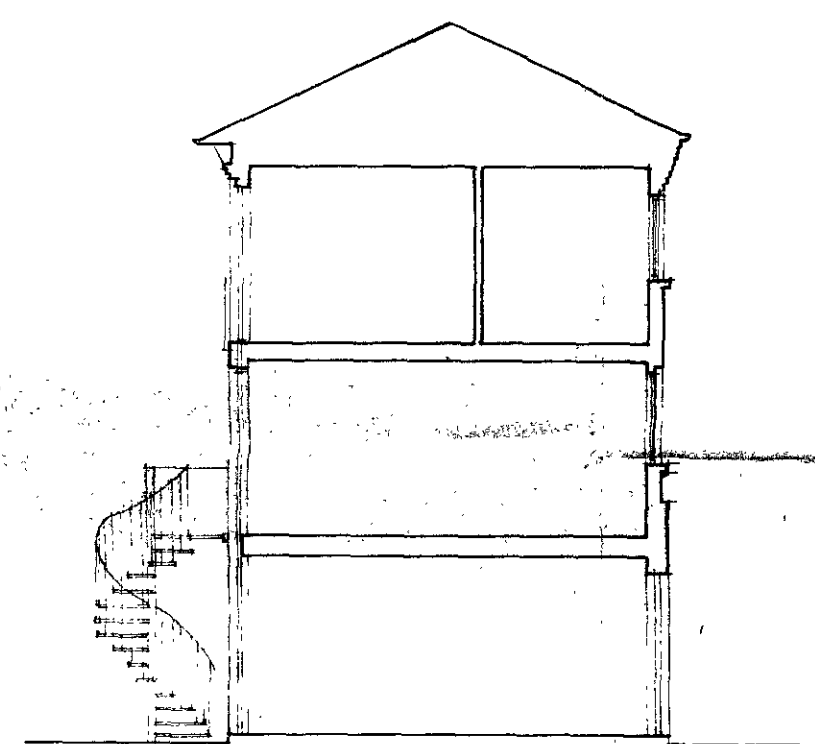


GABLE END (WEST)

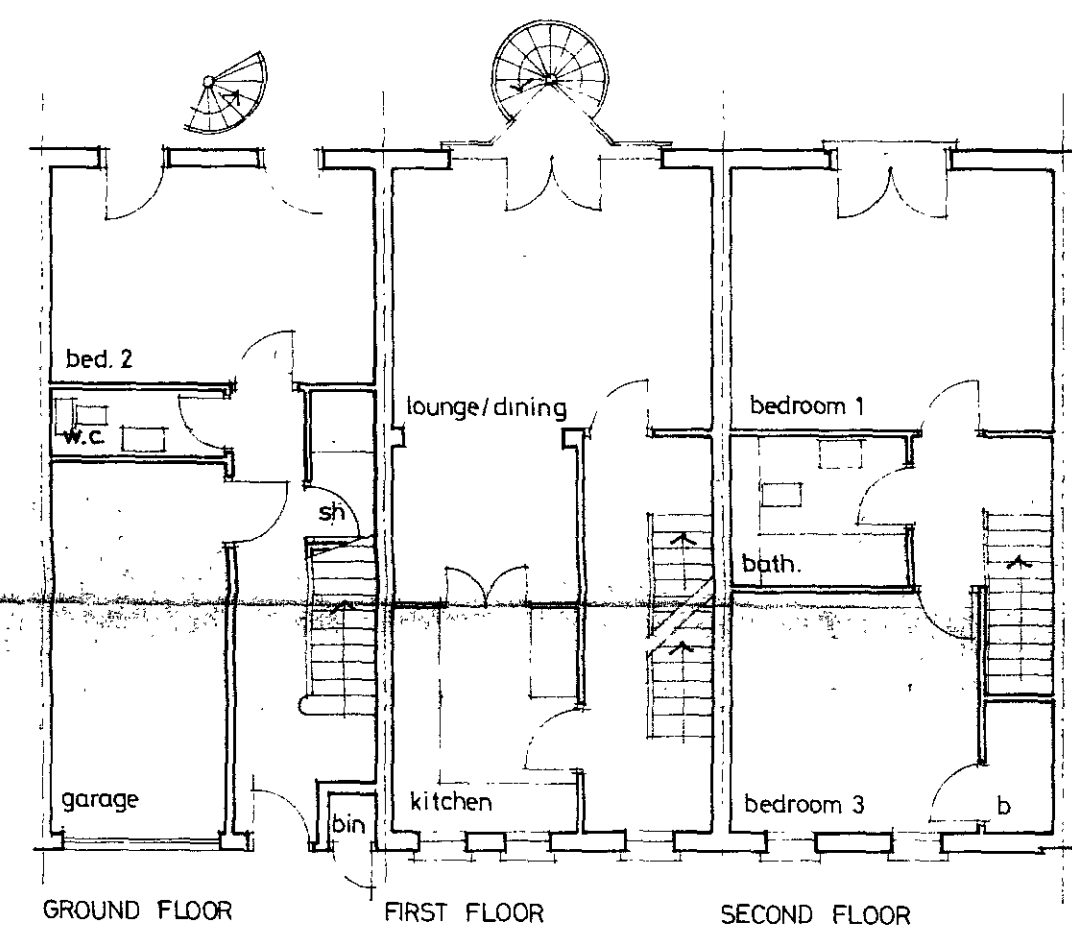


painted render

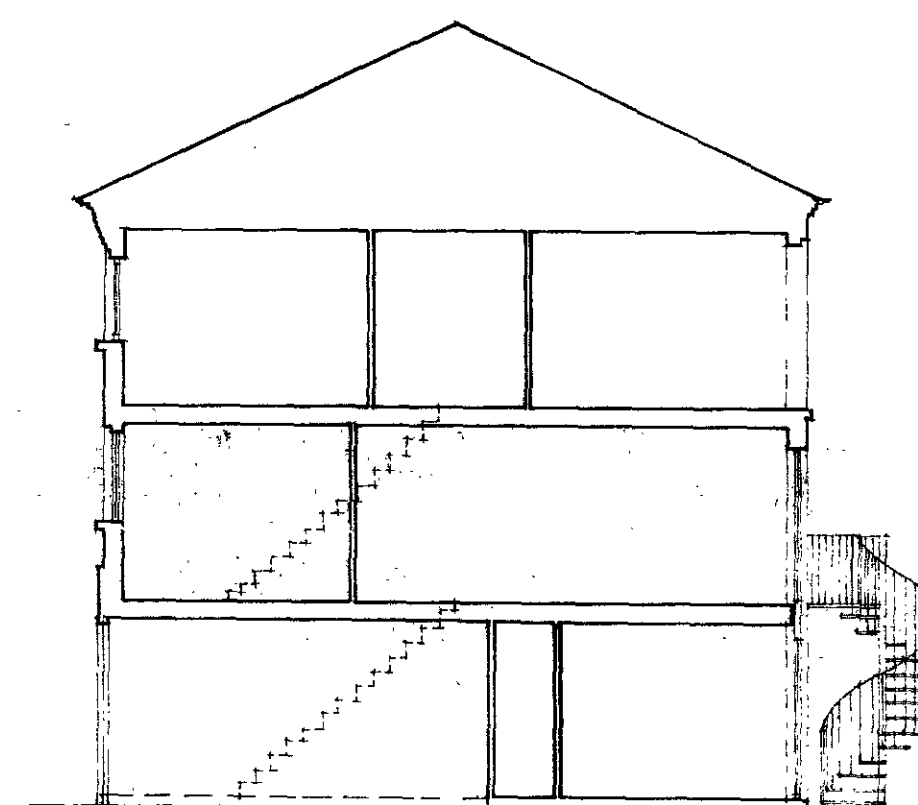
TYPICAL SECTION HOUSE TYPE B



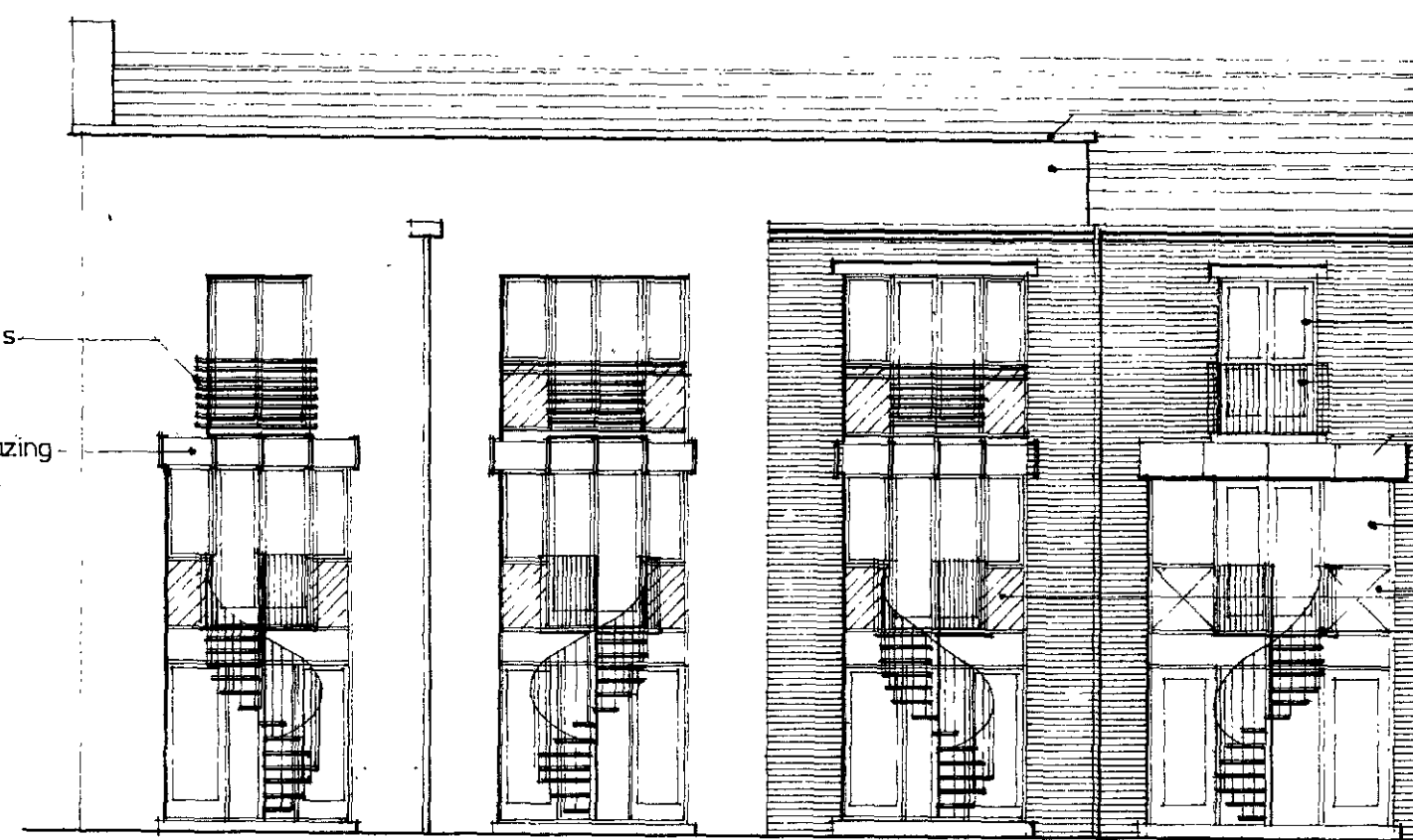
HOUSE TYPE A



TYPICAL SECTION HOUSE TYPE A



painted m.s. windows and doors with patent glazed canopy in this area of houses only



GARDEN ELEVATION (SOUTH WEST)

LONDON BOROUGH OF CAMDEN  
TOWN AND COUNTRY PLANNING ACTS  
15 JAN 1987  
APPROVED  
PLANS NOT APPROVED  
ON BEHALF OF THE COUNCIL

Architects  
Mr. CAMPBELL 20 COLOMITE WILKINSON & COUGH  
124 ALBANY STREET  
LONDON EC1  
157 7525

Date OCTOBER 86

Scale 1:100

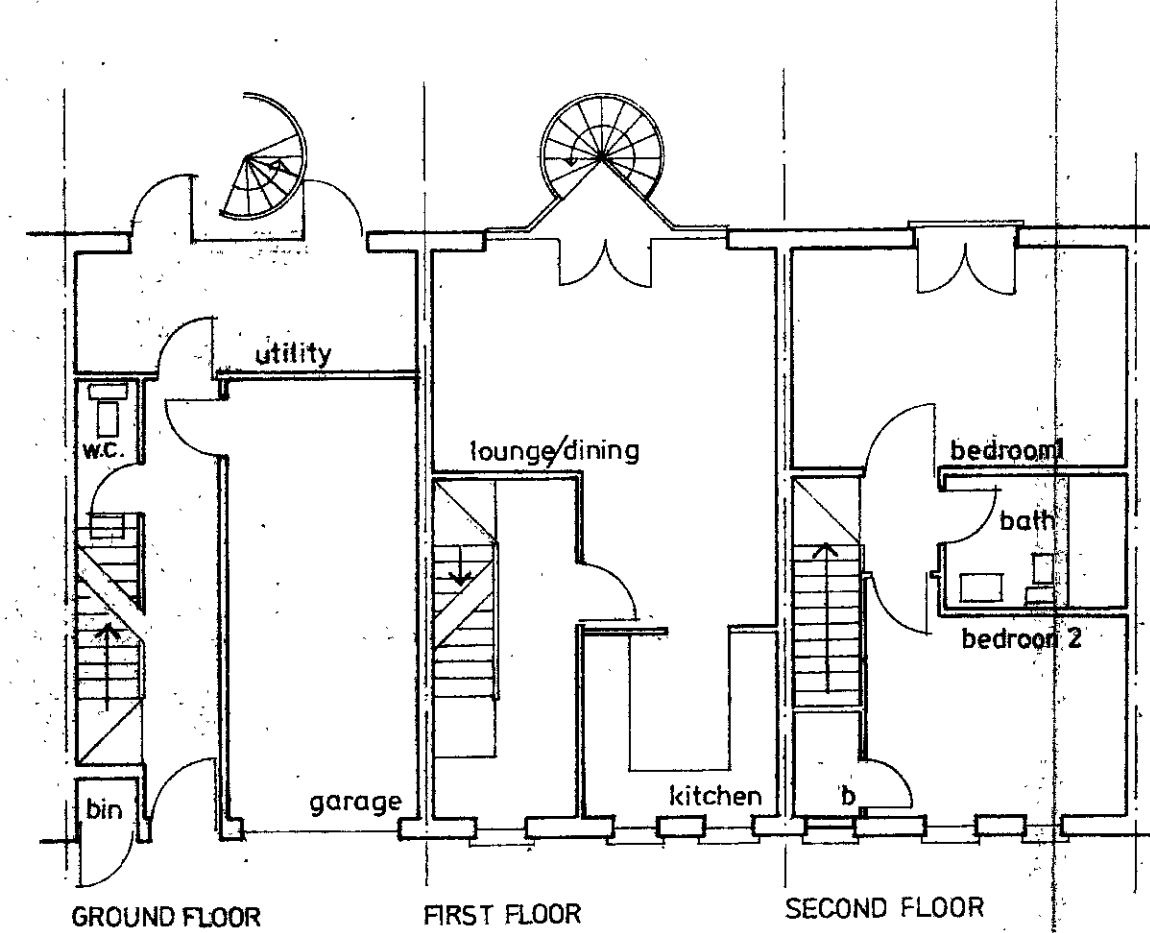
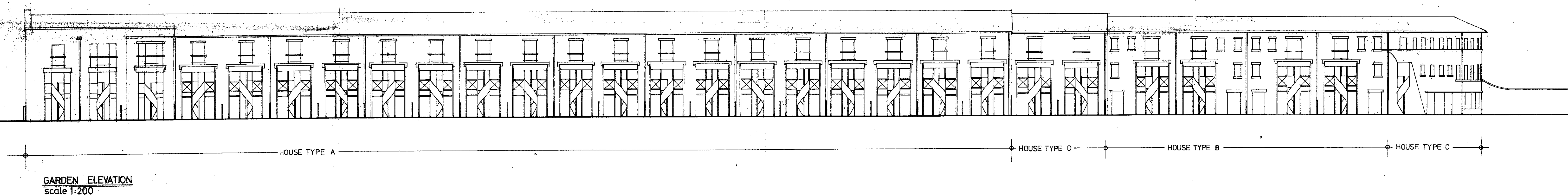
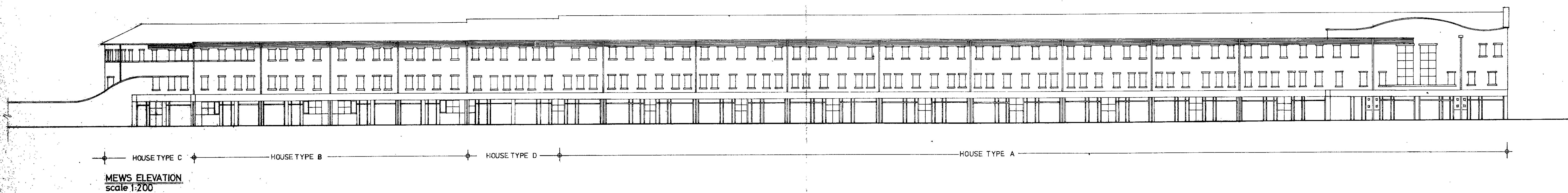
Job 861

ST. PAUL'S MEWS CAMDEN TOWN

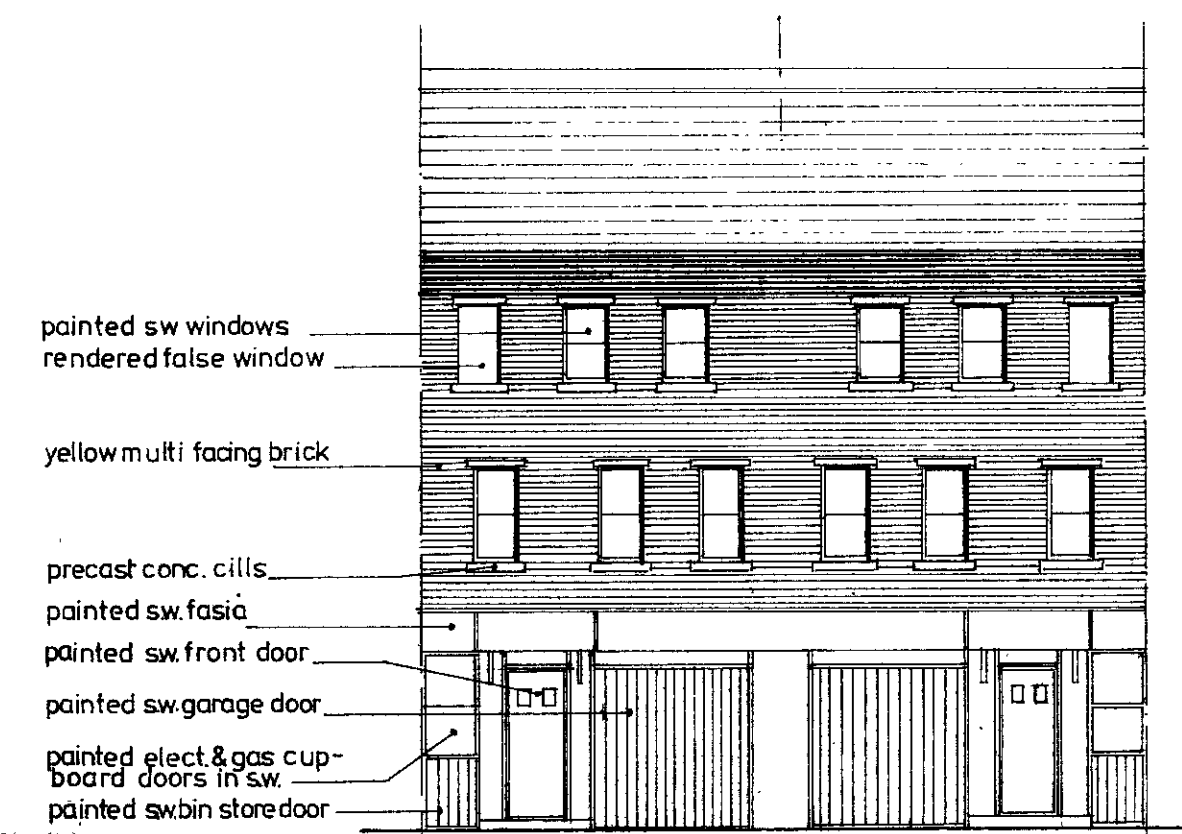
Sp. 602026

HOUSE TYPES A, B and C

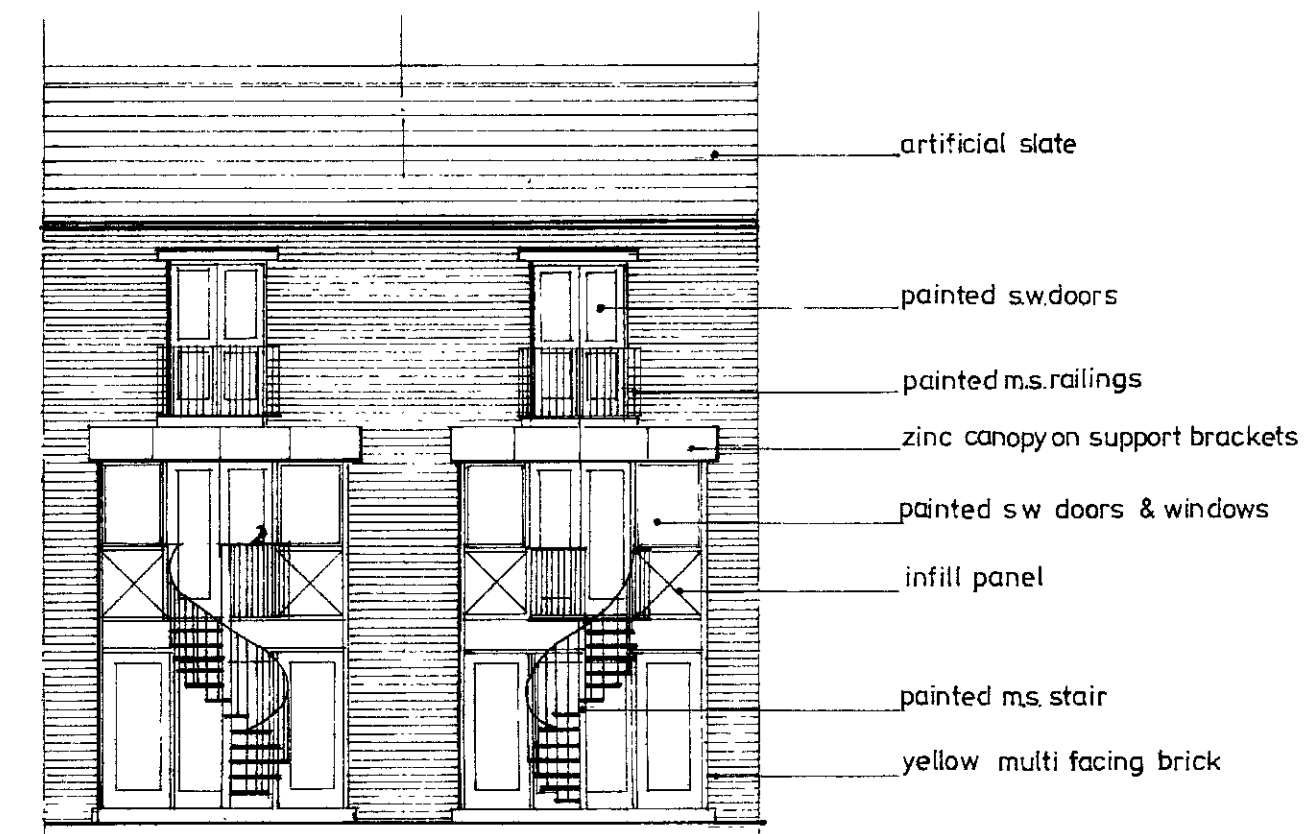
17



HOUSE TYPE D  
Plans scale 1:100



Mews Elevation



Garden Elevation

LONDON BOROUGH OF CAMDEN  
TOWN AND COUNTRY PLANNING ACTS  
15 JAN 1987  
APPROVED  
PLANS NOT APPROVED  
ON BEHALF OF THE COUNCIL

Architect  
TOGOLOVITCH WILLIMON & COUGH  
124 ALDERGATE STREET  
LONDON EC1  
277 7527

Date OCTOBER 86 Scale 1:200/1/80 Job 861

ST PAULS MEWS  
MAINELEVATIONS & HOUSE TYPE D

TR 0602026

16