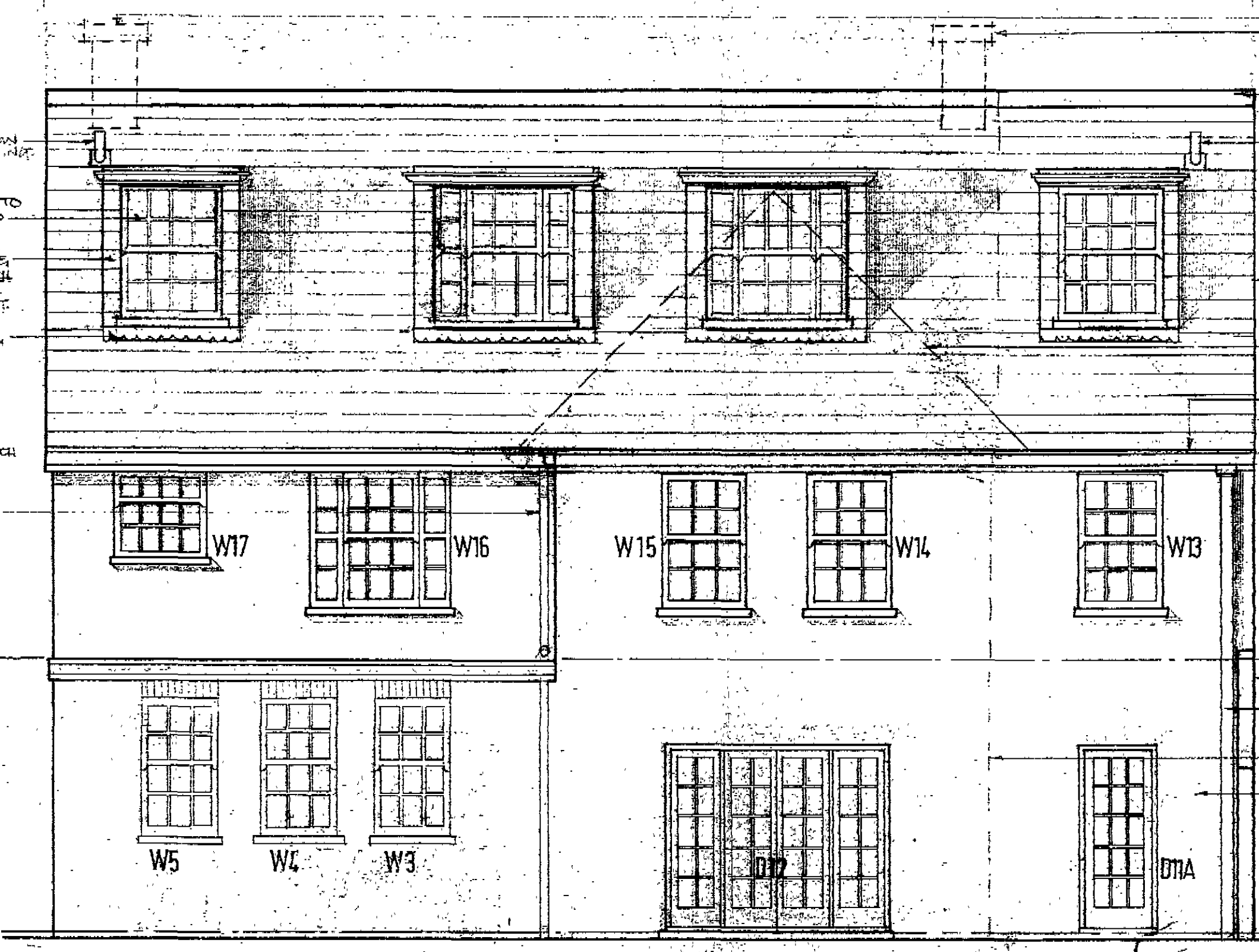


13.650
3000



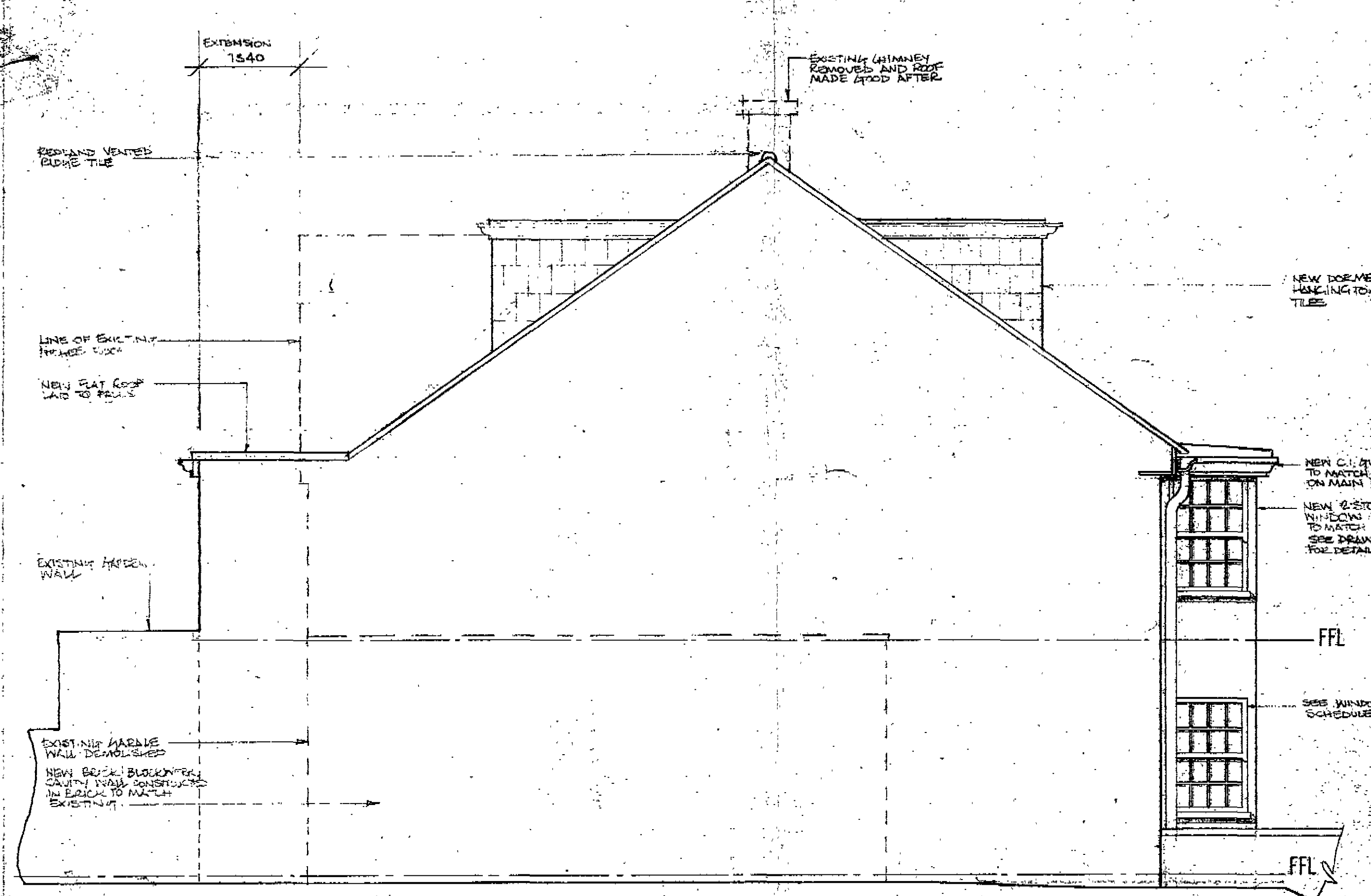
FRONT ELEVATION

13.650

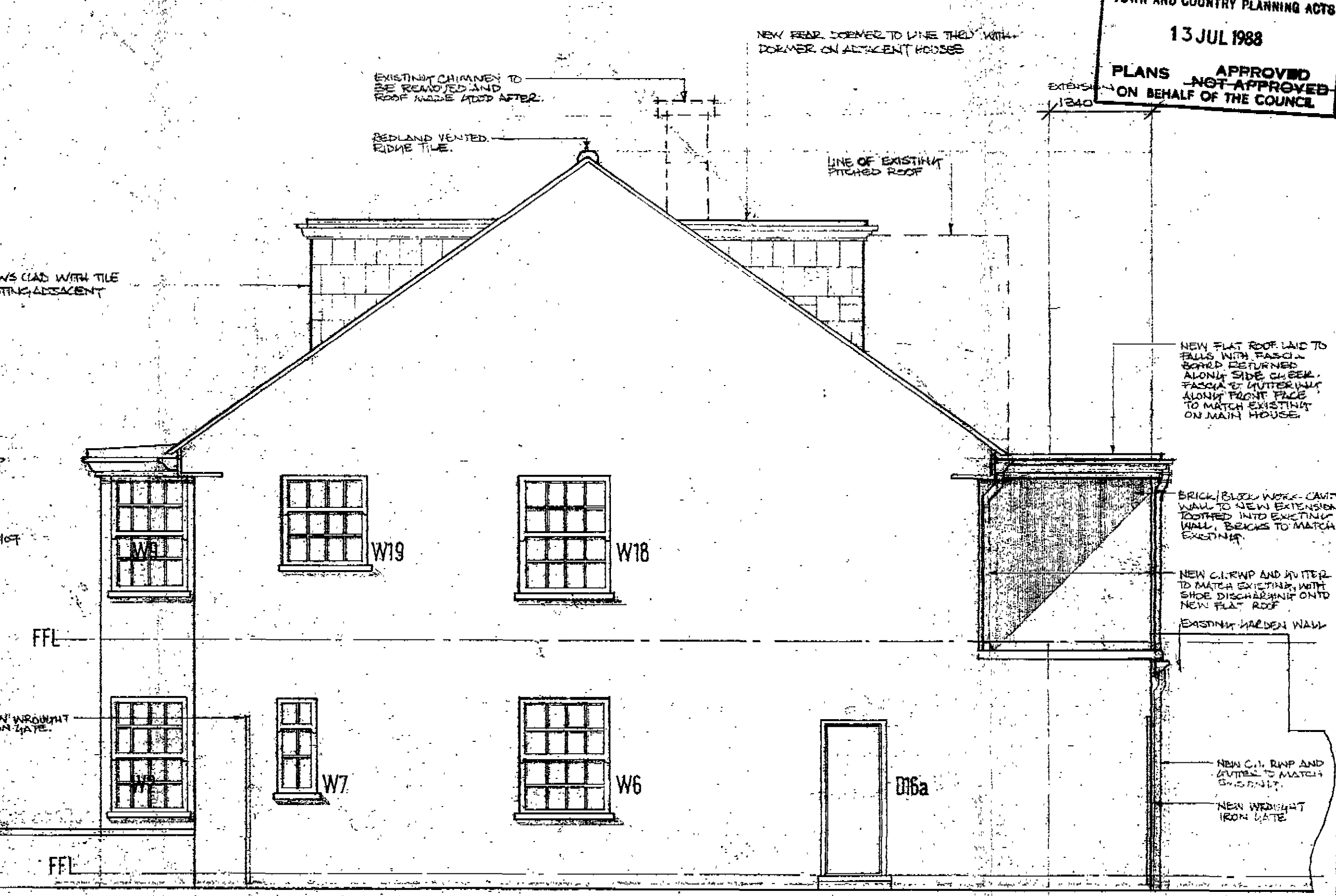


REAR ELEVATION

NO. 5



GARAGE SIDE ELEVATION



SIDE ELEVATION (TO NO. 5)

LONDON BOROUGH OF CAMDEN
TOWN AND COUNTRY PLANNING ACTS
13 JUL 1988
PLANS APPROVED
NOT APPROVED
ON BEHALF OF THE COUNCIL

NOTES
ALL SITE DIMENSIONS TO BE CHECKED ON SITE
All existing windows to be replaced with Georgian type timber sash windows
SEE DOOR AND WINDOW SCHEDULES

REVISIONS
LONDON BOROUGH OF CAMDEN
PLANNING AND TRANSPORT
DEPARTMENT
22 JUN 1988
RECEIVED

Contract Issue
REV 'A' 29 MAY '85
WINDOWS W3, W4, W5, W6, W7, W8 REMOVED
REV 'B' PERMEE WINDOWS ADDED (FOR NEW PLANNING PERMISSION)
REV 'C' 2 NO PERMEE DOORS REMOVED & 2 NO SASH WINDOWS ADDED ON REAR ELE. 10.76

David Hughes Design Associates
Chartered Designers
170 North Gower Street, London NW1 2ND
Telephone (01) 387 8661
Client
S SIDDIQI ESQ. TP 8803604
Project
6 ST JOHNS WOOD PARK
Drawing
ELEVATIONS AS PROPOSED
EXISTING (see letter dated 17/6/85)
Scale 1:50
Date FEB '85
Drawing Number 104/04
Revision D