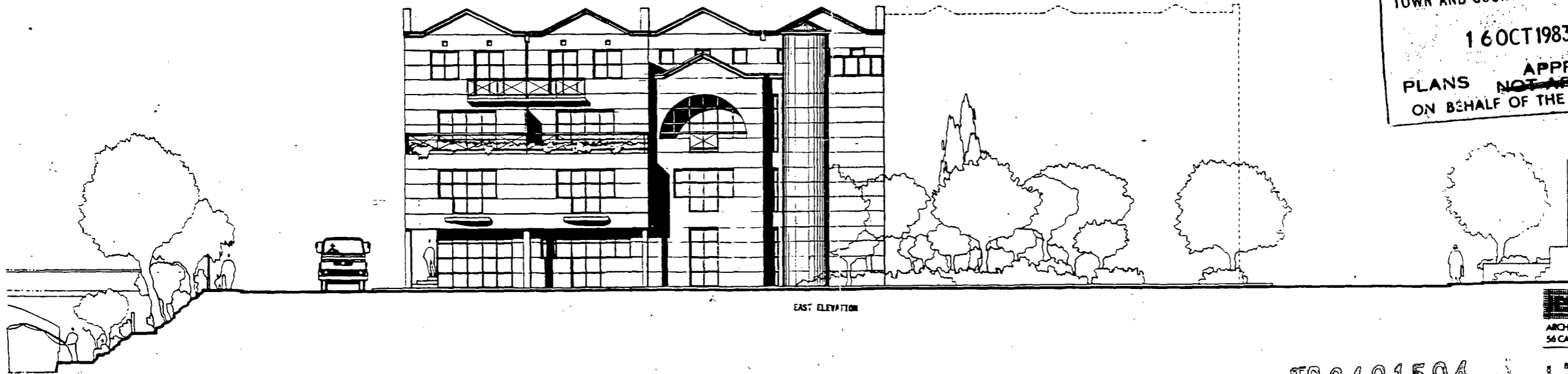


P.P. dated  
24th Oct 84



WEST ELEVATION

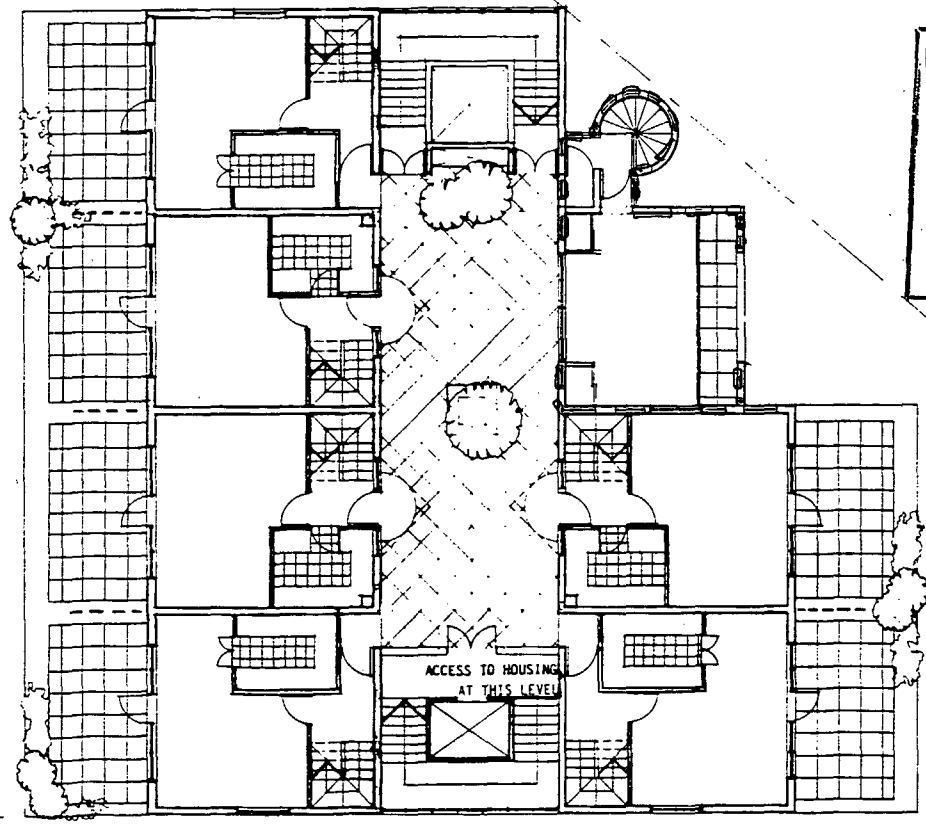
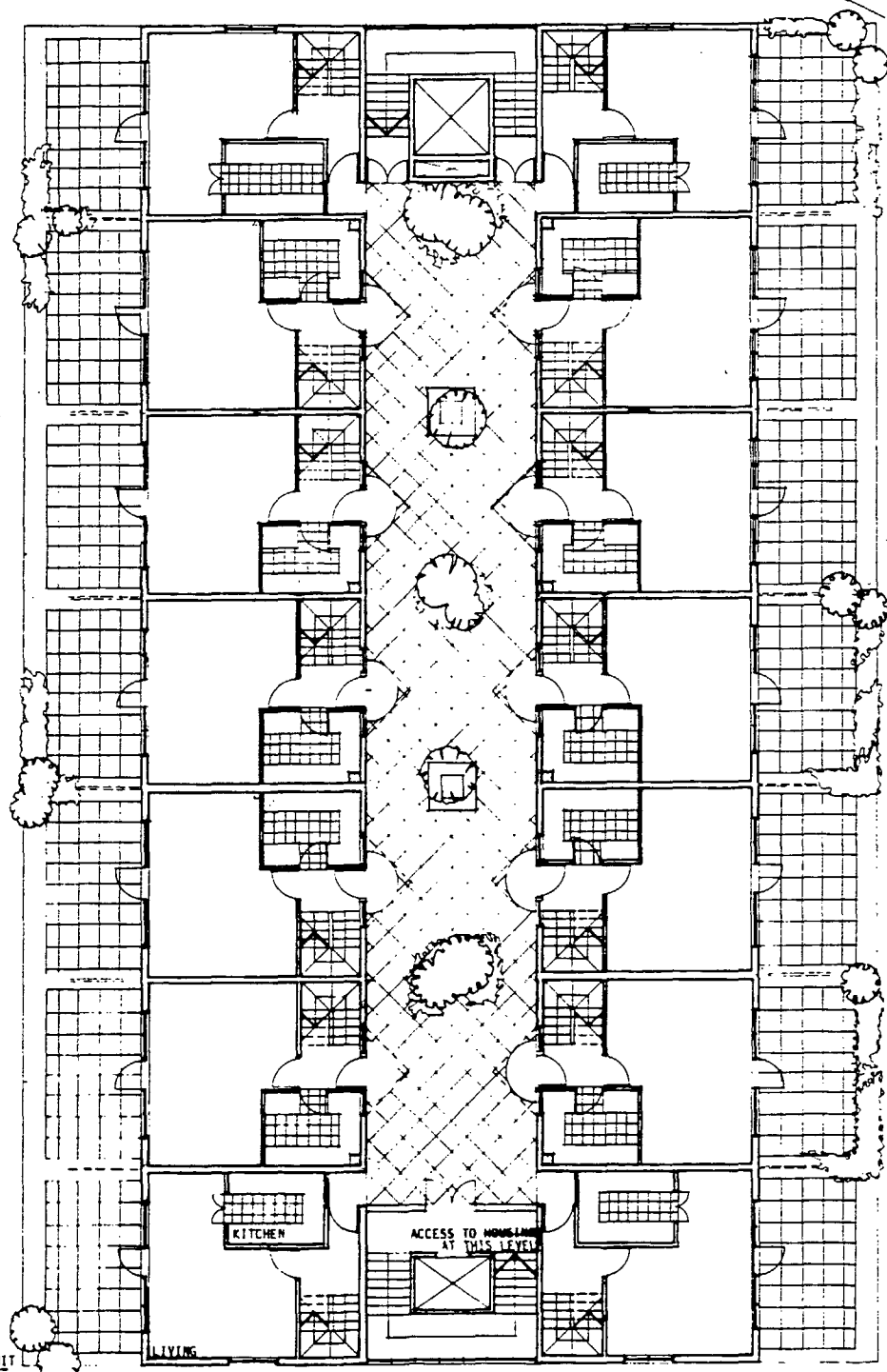


EAST ELEVATION

LONDON BOROUGH OF CAMDEN  
TOWN AND COUNTRY PLANNING ACTS  
16 OCT 1983  
PLANS ~~NOT APPROVED~~ APPROVED  
ON BEHALF OF THE COUNCIL

TP 8401504

ARCHITECTS	
56 CARTER LANE	W 12 236 5647 LONDON EC4V 3EA
BAYNES STREET	
ELEVATIONS	
MARK FITZPATRICK ESTATES	
1:200	APRIL 84
AS 10/16/E	
ALL DIMENSIONS MUST BE CHECKED ON SITE DO NOT SCALE THIS DRAWING FROM ARCHITECTS OF ANY DISCREPANCIES	



LONDON BOROUGH OF CAMDEN  
 TOWN AND COUNTRY PLANNING ACTS  
 16 OCT 1984  
 PLANS ~~NOT APPROVED~~ APPROVED  
 ON BEHALF OF THE COUNCIL

TYPICAL 2 BEDROOM HOUSING UNIT

LIVING

KITCHEN

ACCESS TO HOUSING  
AT THIS LEVEL

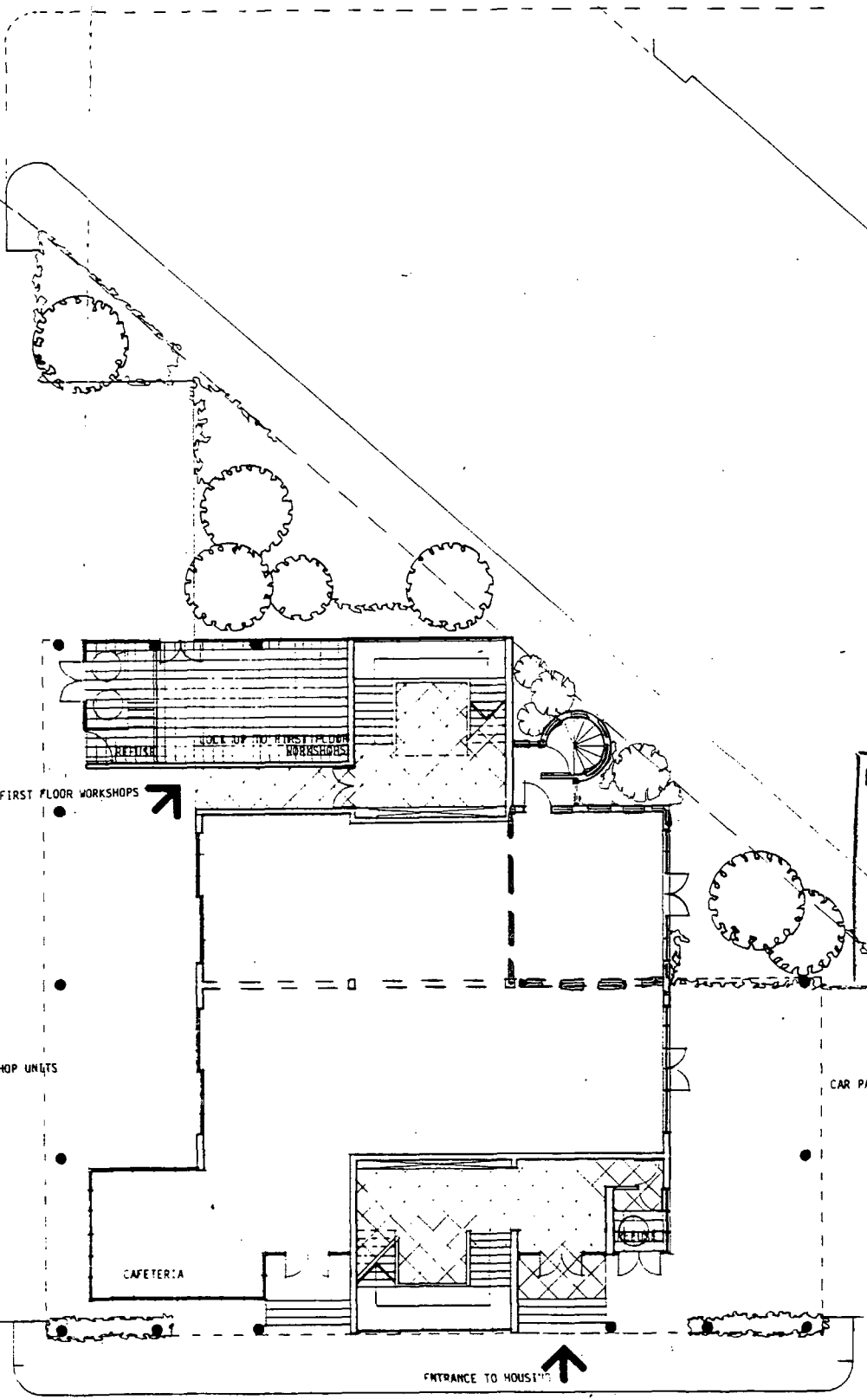
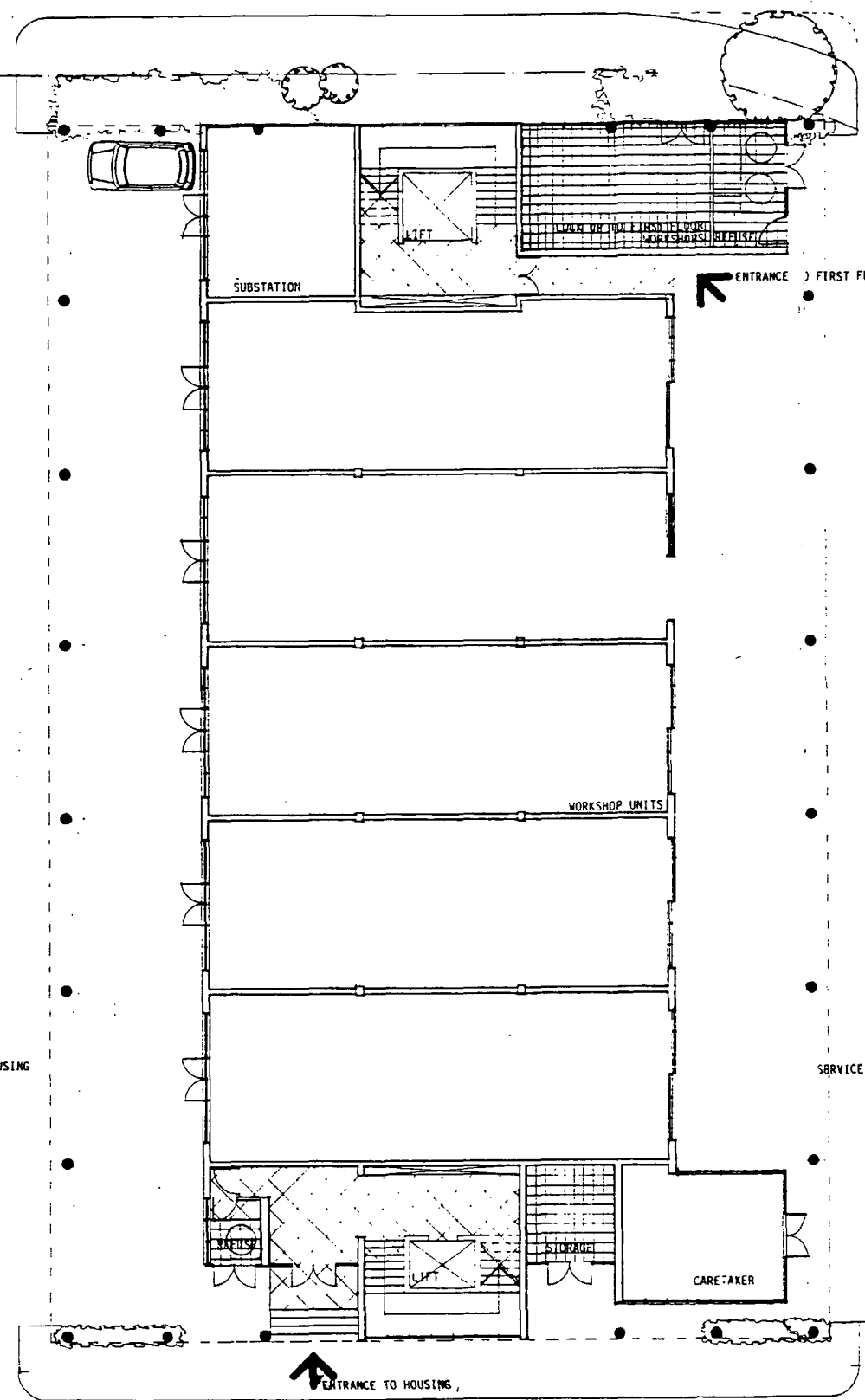
ACCESS TO HOUSING  
AT THIS LEVEL

TP 3401504

ESTABLISHED	
ARCHITECTS	SR OF 236 5447
56 CARTER LANE	LONDON EC4A 3EA
OR	BAYNES STREET
RE	PLAN : SECOND
CON	MARK FITZPATRICK ESTATES
BY	1: 300 8 APRIL 84
BY	BS 10/72 E
ALL DIMENSIONS MUST BE CHECKED ON SITE DO NOT SCALE THIS DRAWING INFORM ARCHITECTS OF ANY DISCREPANCIES	

RANDOLPH STREET

RAILWAY



LONDON BOROUGH OF CAMDEN  
 TOWN AND COUNTRY PLANNING ACTS  
 16 OCT 1984  
 PLANS ~~NOT APPROVED~~ APPROVED  
 ON BEHALF OF THE COUNCIL



ARCHITECTS	TP 84015 34
56 CARTER LANE	LONDON EC4A 3EA
BAYNES STREET	
PLAN : GROUND	
MARK FITZPATRICK ESTATES	
1:500	APRIL 84
BS 10/10	
ALL DIMENSIONS MUST BE CHECKED ON SITE DO NOT SCALE THE DRAWING INFORM ARCHITECTS OF ANY DISCREPANCIES	

TP 84015 34

BAYNES STREET

CAR PARKING TO HOUSING

SERVICE ACCESS TO WORKSHOP UNITS

CAR PARKING TO HOUSING

FUTURE ONE WAY SYSTEM

SUBSTATION

ENTRANCE FIRST FLOOR WORKSHOPS

WORKSHOP UNITS

ENTRANCE TO FIRST FLOOR WORKSHOPS

CAFETERIA

CARE-TAKER

ENTRANCE TO HOUSING

ENTRANCE TO HOUSING