

LOCATION PLAN  
SCALE 1/1250

**SCHEDULE OF ACCOMODATION**

BLOCK	NO. OF STOREYS	1BR.	2BR.	3BR.	4 BR.	PENTHOUSES 2BR.	
A	3+B		4	4	4		
B	5+B+P	3		6	3	1	
C	5+B+P	5		9	6	2	
D	5+B+P	5		9	6	2	
E	5+B+P	3		6	3	1	
F	3+B		4	4	4		
TOTAL NUMBER OF UNITS		17	8	38	26	6	= 95
TOTAL NO. OF HAB. ROOMS		32	24	152	130	18	= 356
AREA OF SITE FOR DENSITY = 2.3 ACRES							

**Notes**

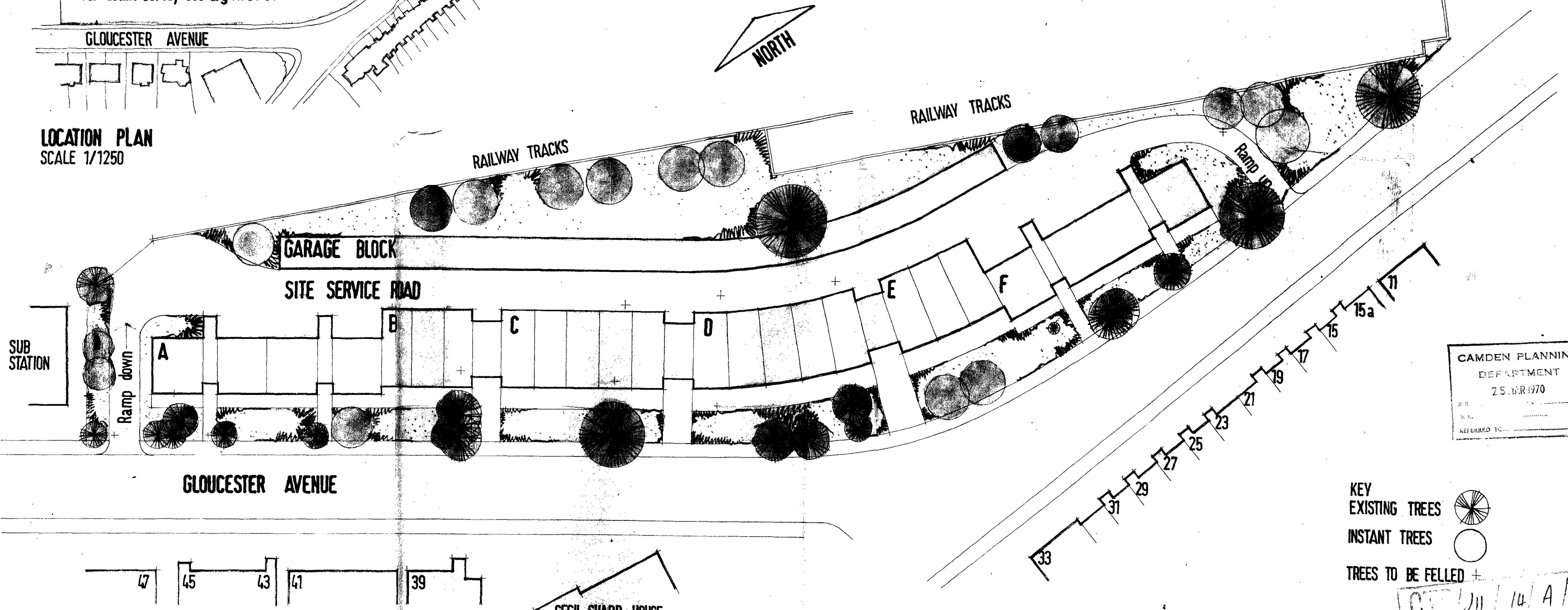
The Contractor is responsible for checking dimensions. Any discrepancy to be verified with the Architect before proceeding with the works.

Where an item is covered by drawings of different scales, the drawing having the largest scale is to be worked to.

Do not scale drawings. Figured dimensions to be worked to in all cases.

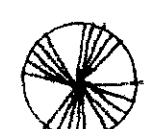
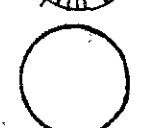

---

**Amendments**



SITE LAYOUT  
SCALE 32' 0" = 1"

CAMDEN PLANNING  
DEPARTMENT  
25. MAR 1970

KEY  
EXISTING TREES   
INSTANT TREES   
TREES TO BE FELLED + 

GT/11/14/A/8310

Job <b>2-24 GLOUCESTER AVE, NW1.</b>	Job No. <b>1176</b>
Drawing <b>SCHEME B</b>	Drawing No. <b>7</b>
Scale: <b>AS NOTED</b>	Date: <b>JAN 1970</b>
<b>RONALD SALMON &amp; PARTNERS</b> Chartered Architects A/ARIBA 13 Campden Street, Kensington, London, W.8. 01-229 9176/7	

AREA OF SITE FOR DENSITY = 2.3 acres

SCHEDULE OF ACCOMMODATION

Block	No. of storeys	1BR	2BR	3BR	4BR	Penthouses (2BR)
A	3+B		4	4	4	
B	5+B+P	3		6	3	1
C	5+B+P	5		9	6	2
D	5+B+P	5		9	6	2
E	5+B+P	3		6	3	1
F	3+B		4	4	4	
Total number of units		17	8	38	26	6
Total number of lab. rooms		32	24	152	150	18

= 95  
= 356

Notes

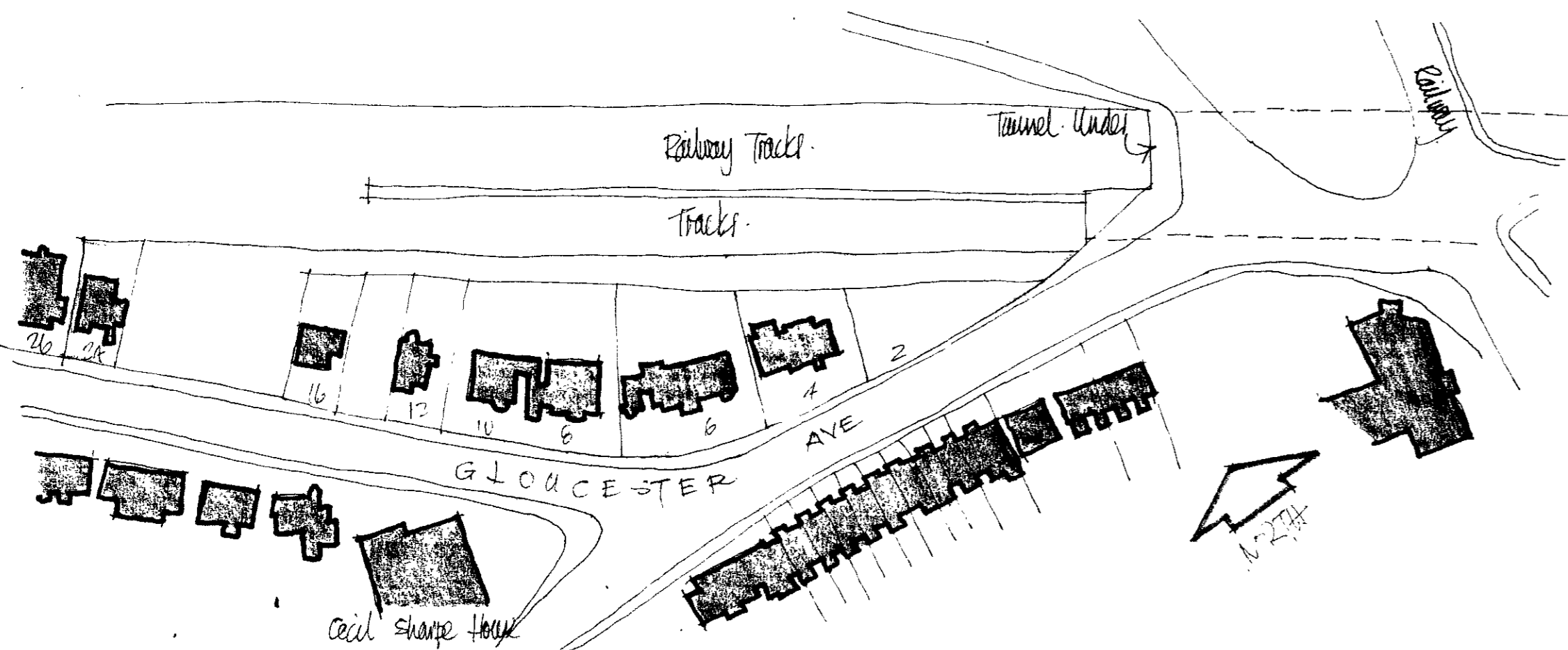
The Contractor is responsible for checking dimensions. Any discrepancy to be verified with the Architect before proceeding with the works.

Where an item is covered by drawings of different scales, the drawing having the largest scale is to be worked to.

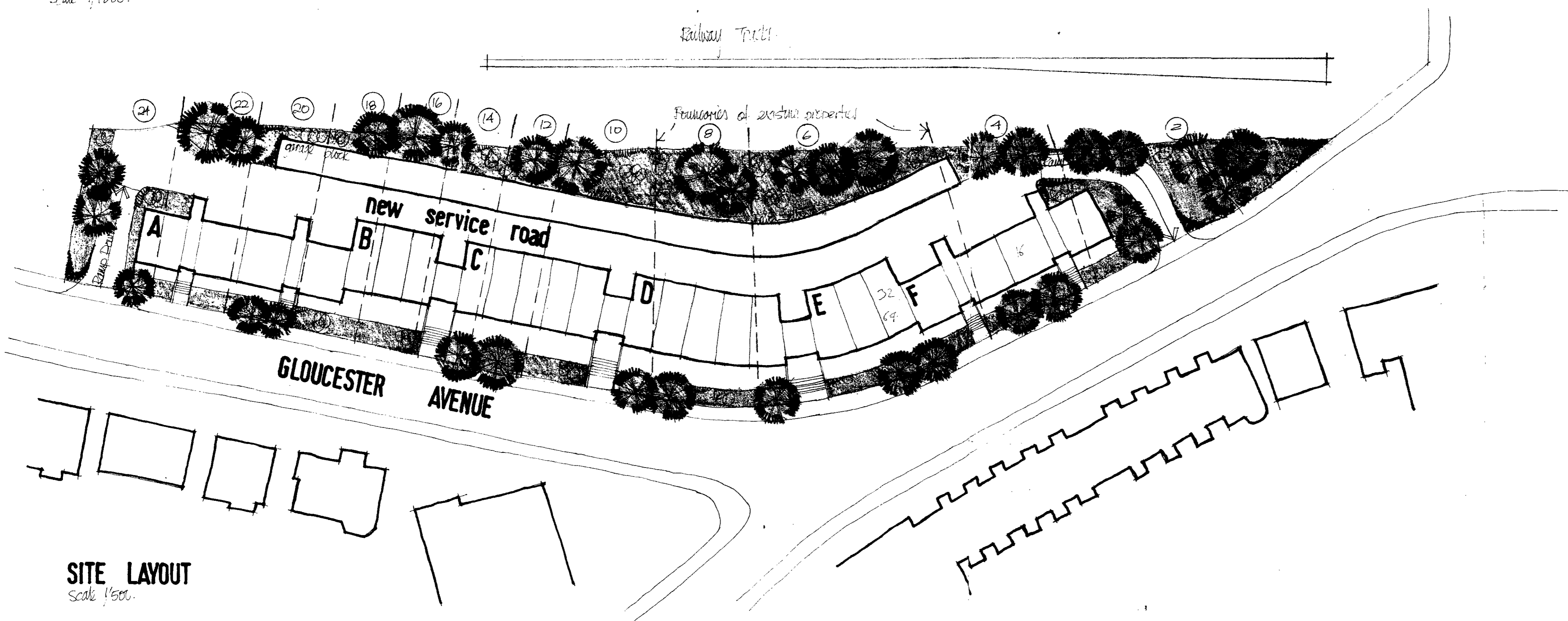
Do not scale drawings. Figured dimensions to be worked to in all cases.

Amendments

CTP/J11/14/A/8310



LOCATION PLAN  
Scale 1/1250.



SITE LAYOUT  
Scale 1/500.

Job <b>2-24 GLOUCESTER AVE, NW1</b>	Job No. <b>1176</b>
Drawing <b>SKETCH SCHEME B</b>	Drawing No. <b>5</b>
Scale: <i>As noted</i>	Date: <i>January 1970</i>
<b>RONALD SALMON &amp; PARTNERS</b> Chartered Architects A/ARIBA 13 Campden Street, Kensington, London, W.8. 01-229 9176/7	