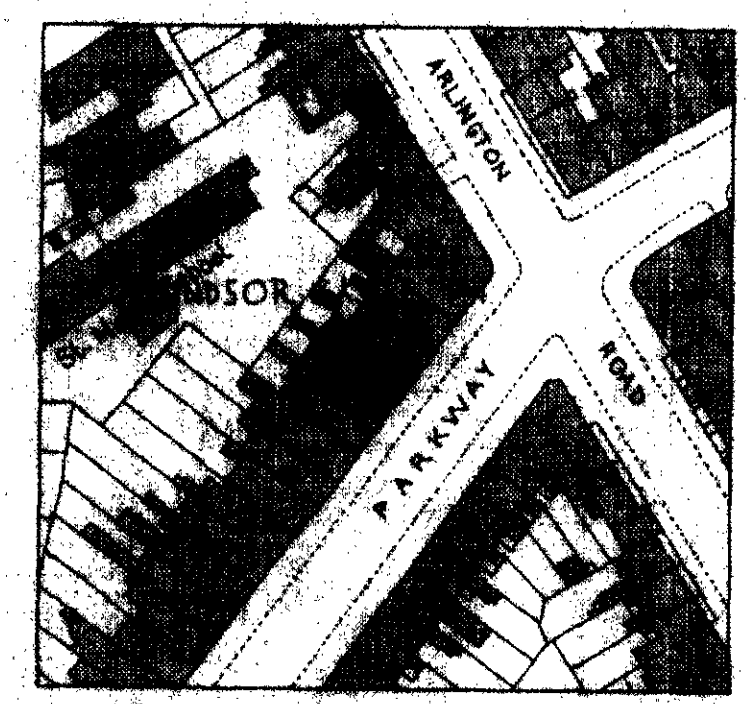
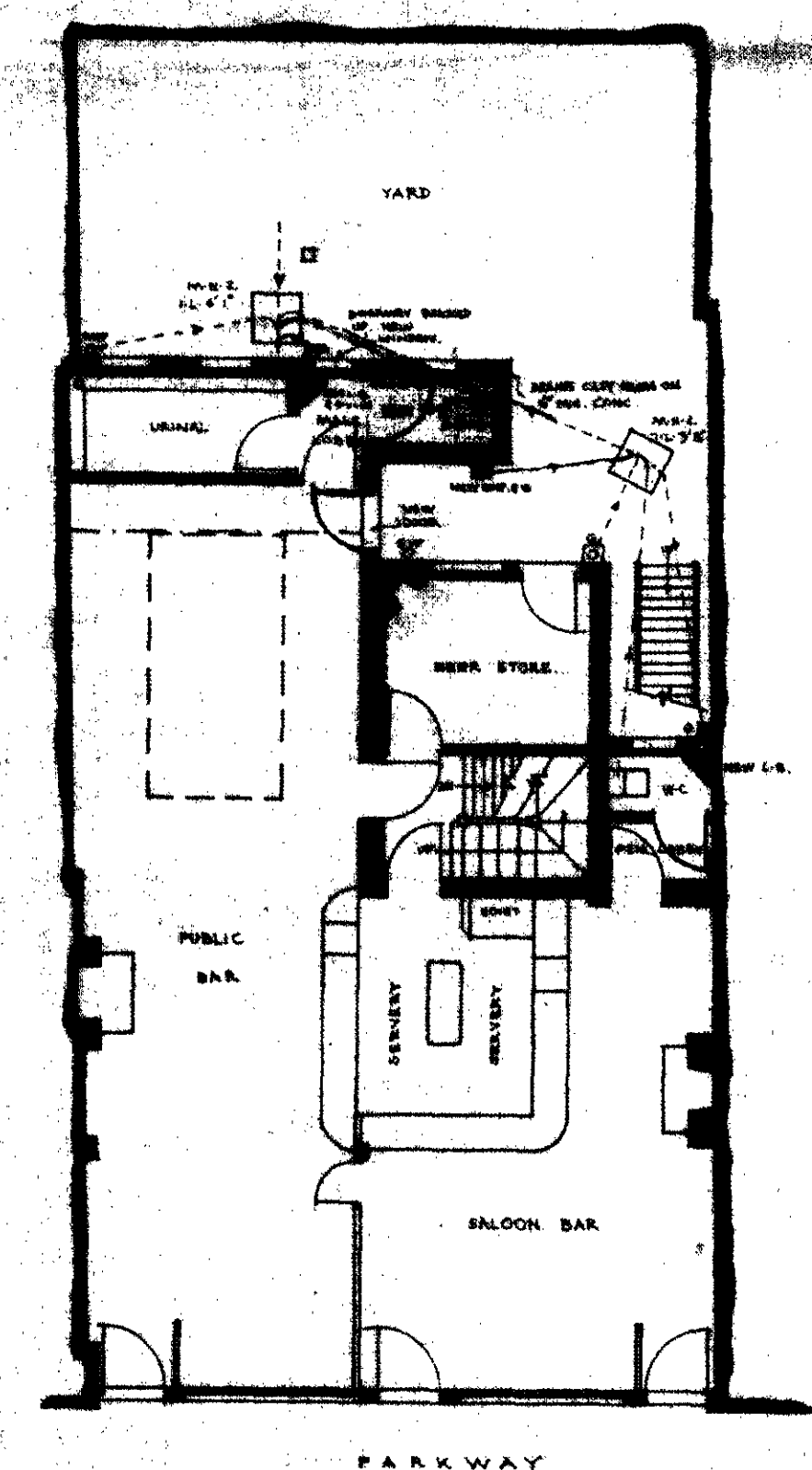
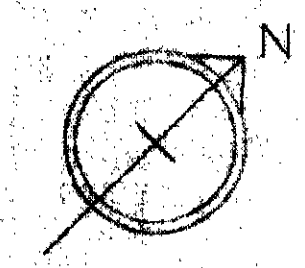
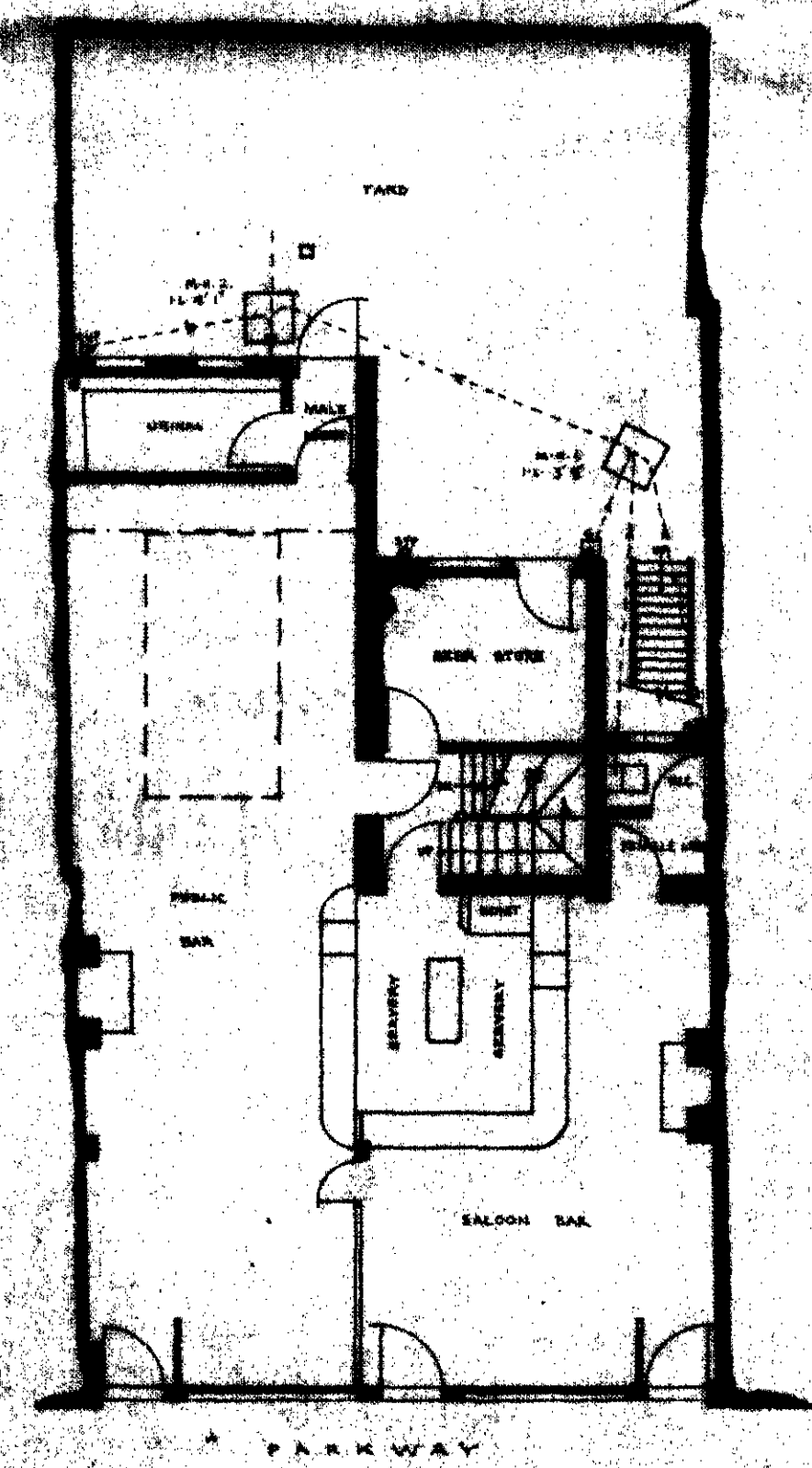
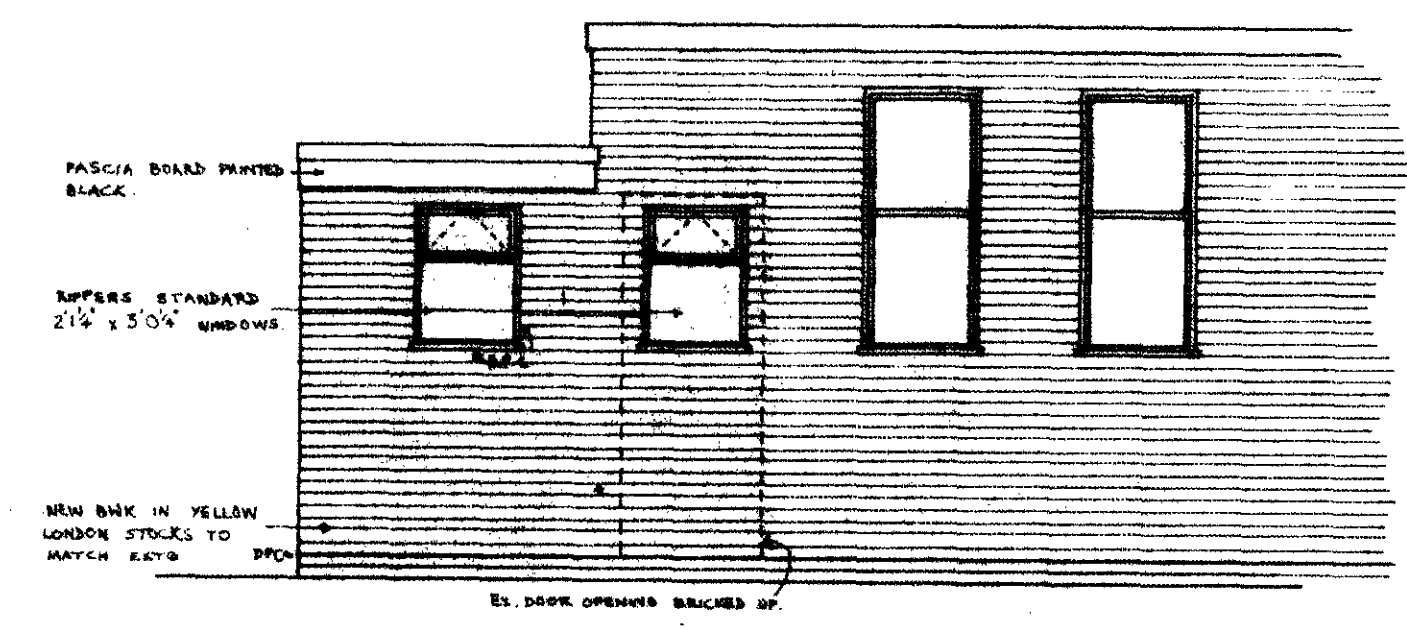
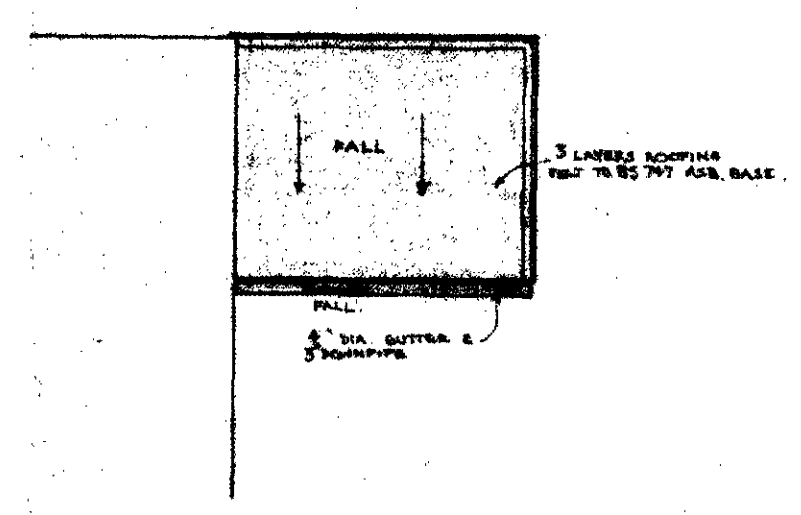
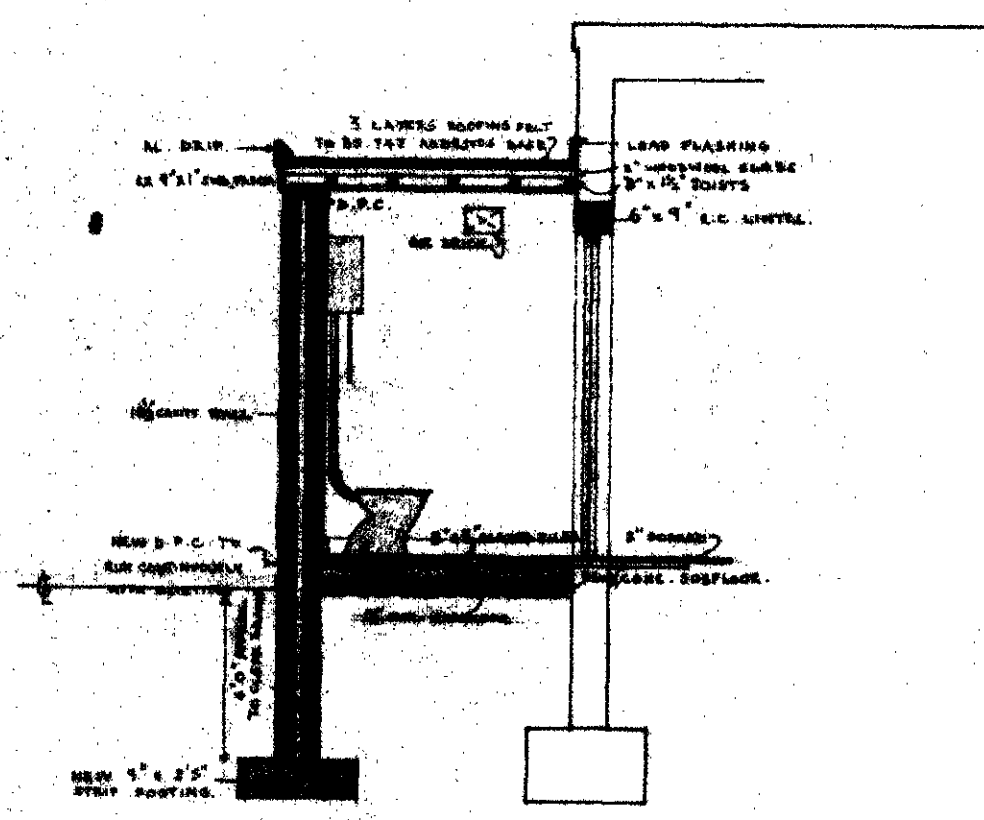


NOTES.

1. LINTELS TO BE PROVIDED WHERE DRAINS PASS THROUGH FOUNDATION WALLS.

REVISIONS.
1. General amendments 5-12-1966.



LONDON BOROUGH OF CAMDEN
PRESENTED TO THE PLANNING AND
DEVELOPMENT COMMITTEE APPLICATIONS
SUB-COMMITTEE ON 1.8 JAN 1967

GTP/J11/11/11/2984

SMITH & WILSON-SMITH S/ARIBA, AM.P.L.L.
86, MILE END ROAD, LONDON E.1.

'WINDSOR CASTLE' P.H.
32, PARKWAY, CAMDEN TOWN, N.W.1.

DWG: PROPOSED ALTERATIONS.

SCALE.	1/8" & 1/4" = 1'0"	DWG. NO.:	1029/1 R.I.
DATE.	28-11-1966		
DRAWN.	EF.		