

3060

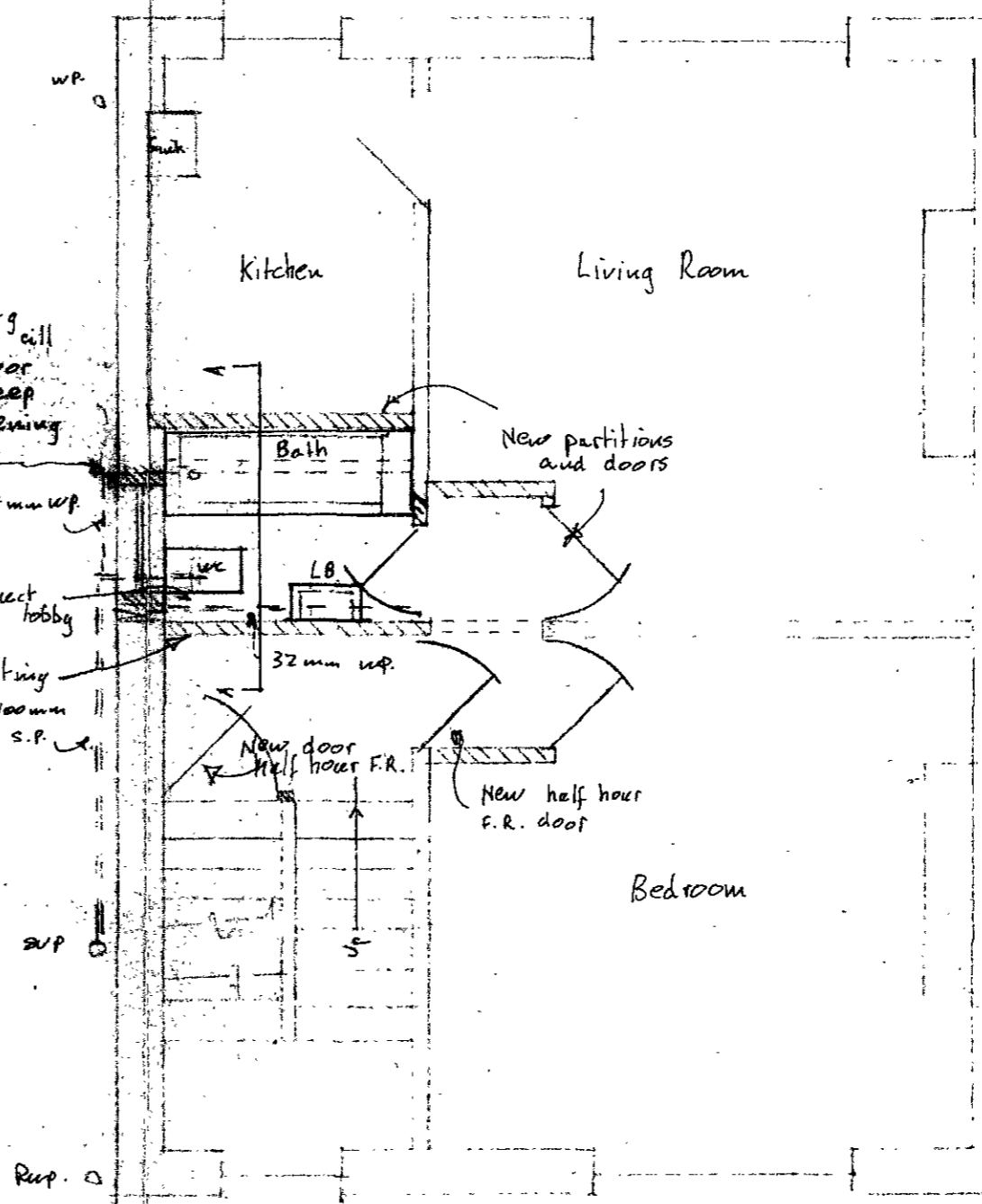
Form window opening
800 x 450 mm, with sill
1800 mm above floor
level, 150 mm deep
r.c. lintel over opening
c/eye

Party Wall No. 36

High level duct
to ventilate lobby

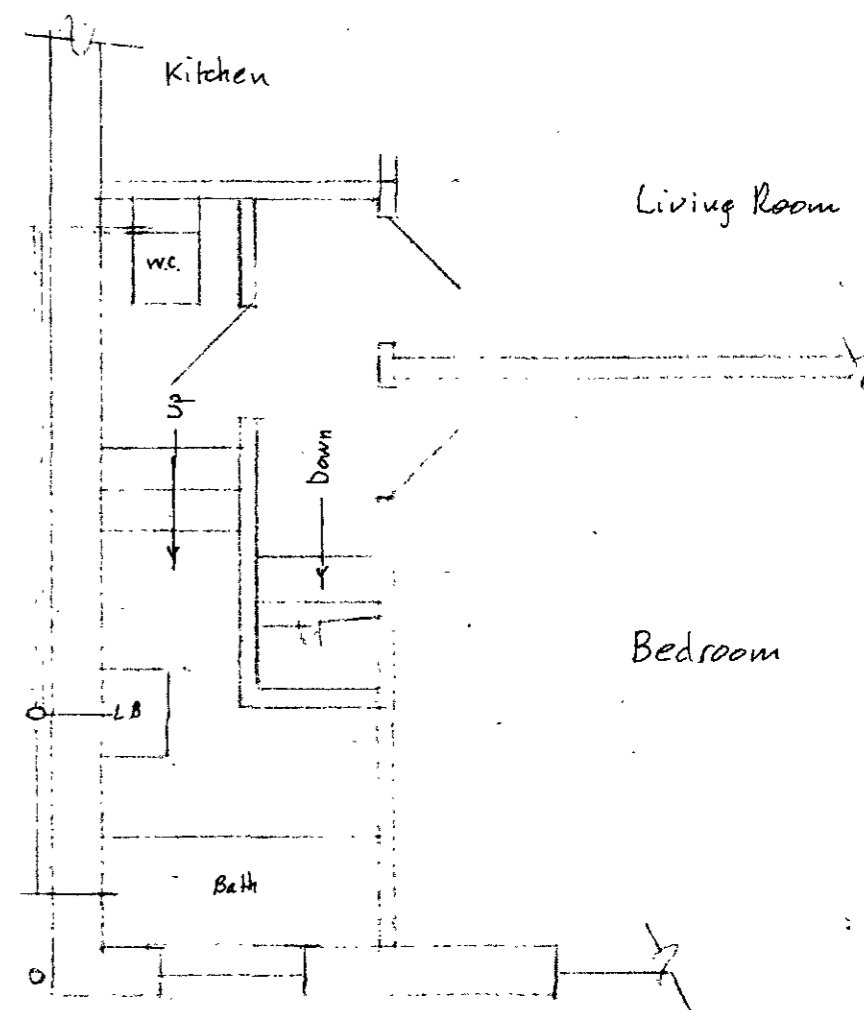
Half hour fire resisting
stud partition

New soil and
waste pipes
to be p.l.c.



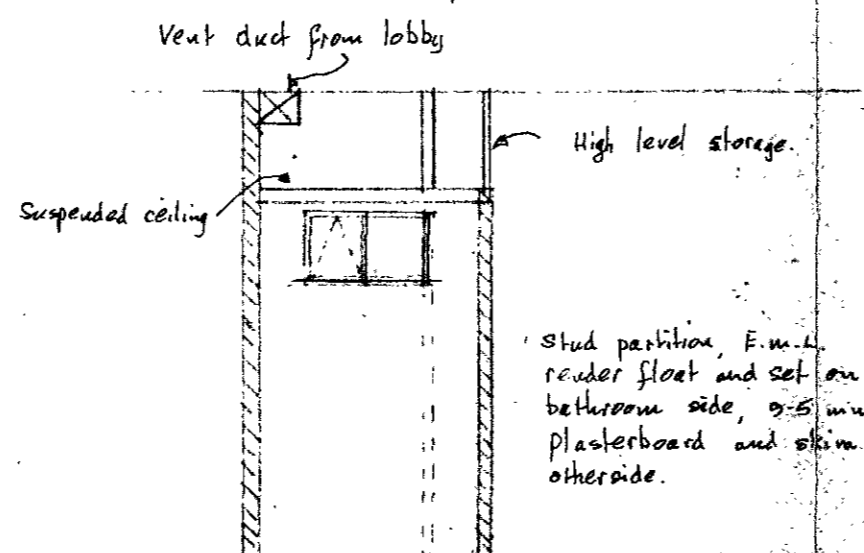
Remove old partition

New stud partition



PART SECOND FLOOR PLAN
EXISTING (REMAINS UNCHANGED)

FIRST FLOOR PLAN
EXISTING



SECTION A/A

Support new partitions to
d.s. requirements

FIRST FLOOR PLAN
PROPOSED

APPROVED
 PLANS NOT APPROVED
 ON BEHALF OF THE COUNCIL
 18 NOV 1980
 TOWN AND COUNTRY PLANNING ACTS
 LONDON BOROUGH OF CAMDEN

CASE COPY.

CTP/A13/5/18/31169/R

A. Window in bathroom added
8.10.80

39, ST. AUGUSTINES RD,
LONDON, N.W.1.

Scale:- 1:50

Date:- Sept 1980.

No. 350/26/1A

John D. Shaw, ARCS,
Chartered Surveyor,
310, Ballards Lane,
London, N.12.