



**FIAT**

NORTH LONDON  
COACHWORKS LTD.

British Rail Camden Road

**FIAT**

FRUIT  
VEGETABLES

ALL SIGNS  
BLUE WITH  
WHITE LETTERS.

PROPOSED NEW  
SHOP FRONT TO  
110 CAMDEN RD  
FOR TRADE AND  
RETAIL PARTS  
SALES. CAR PARK  
IN RANDOLPH ST.

SIGN FASCIA STANDARD  
2' WIDE FIAT FASCIA  
SIGN AS IN USE ELSEWHERE

CTP/H12/26/B/1202

SIGN PAINTING ON BRIDGE  
SHOULD REPLACE EXISTING  
ADVERTISING BY PERMISSION  
OF BRITISH RAILWAYS

FIAT  
SALES

NORTH LONDON  
COACHWORKS LTD.

FIAT  
SERVICE

NORTH LONDON COACHWORKS

FIAT

FIAT

14'3"

100'

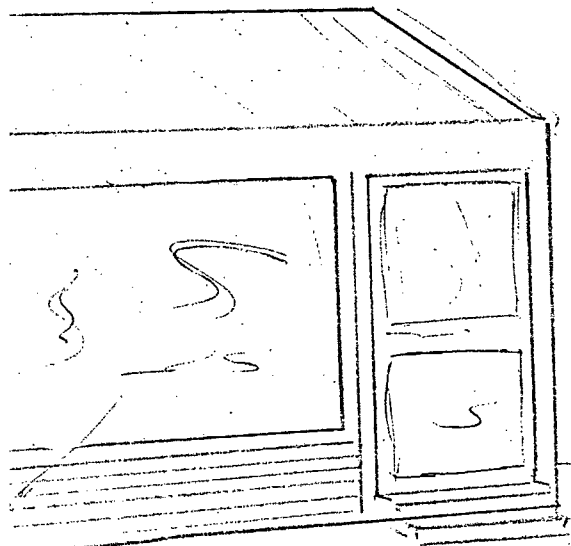
PROPOSED NEW SITING  
UNDER BRIDGE IN  
RANDOLPH ST.  
OPPOSITE NO. 38  
AND ENTRANCE TO  
SERVICE DEPT.

BLUE 2' WIDE  
FACIA WITH  
WHITE LETTERS  
HANGING SIGNS  
ILLUMINATED  
BLUE WITH WHITE  
LETTERS

WOULD REPLACE BRICK WALL  
WITH DOUBLE GATES FORMING  
A PARKING YARD.

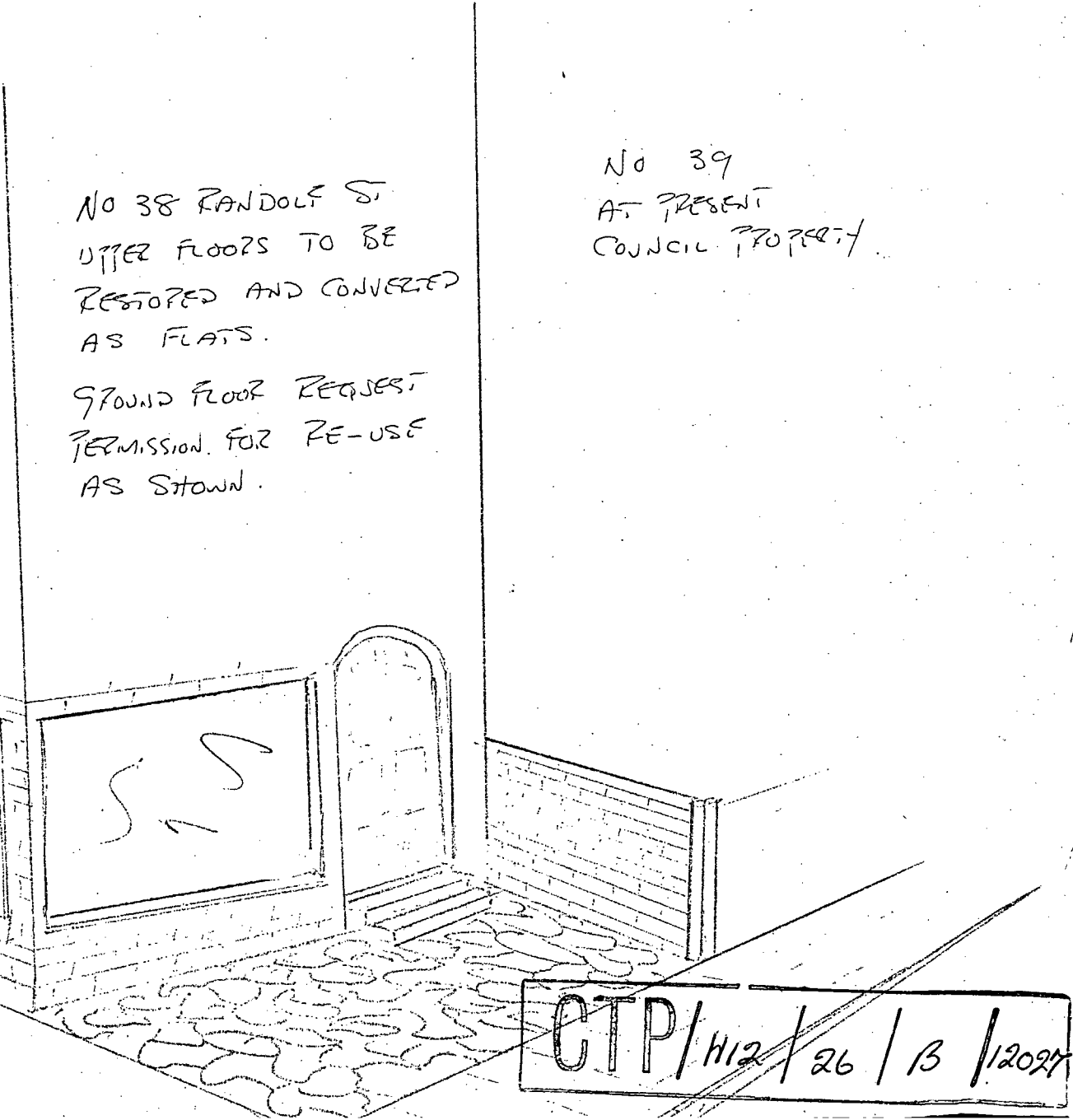
CTP/H12/26/B/12027

# NORTH LONDON COACHWORKS



EXISTING TEMPORARY OFFICE.

ENTRANCE TO SERVICE AREA



NO 38 RANDOLF ST.  
UPPER FLOORS TO BE  
RESTORED AND CONVERTED  
AS FLATS.

GROUND FLOOR REQUEST  
PERMISSION FOR RE-USE  
AS SHOWN.

NO 39  
AT PRESENT  
COUNCIL PROPERTY

CTP/H12/26/B/12024