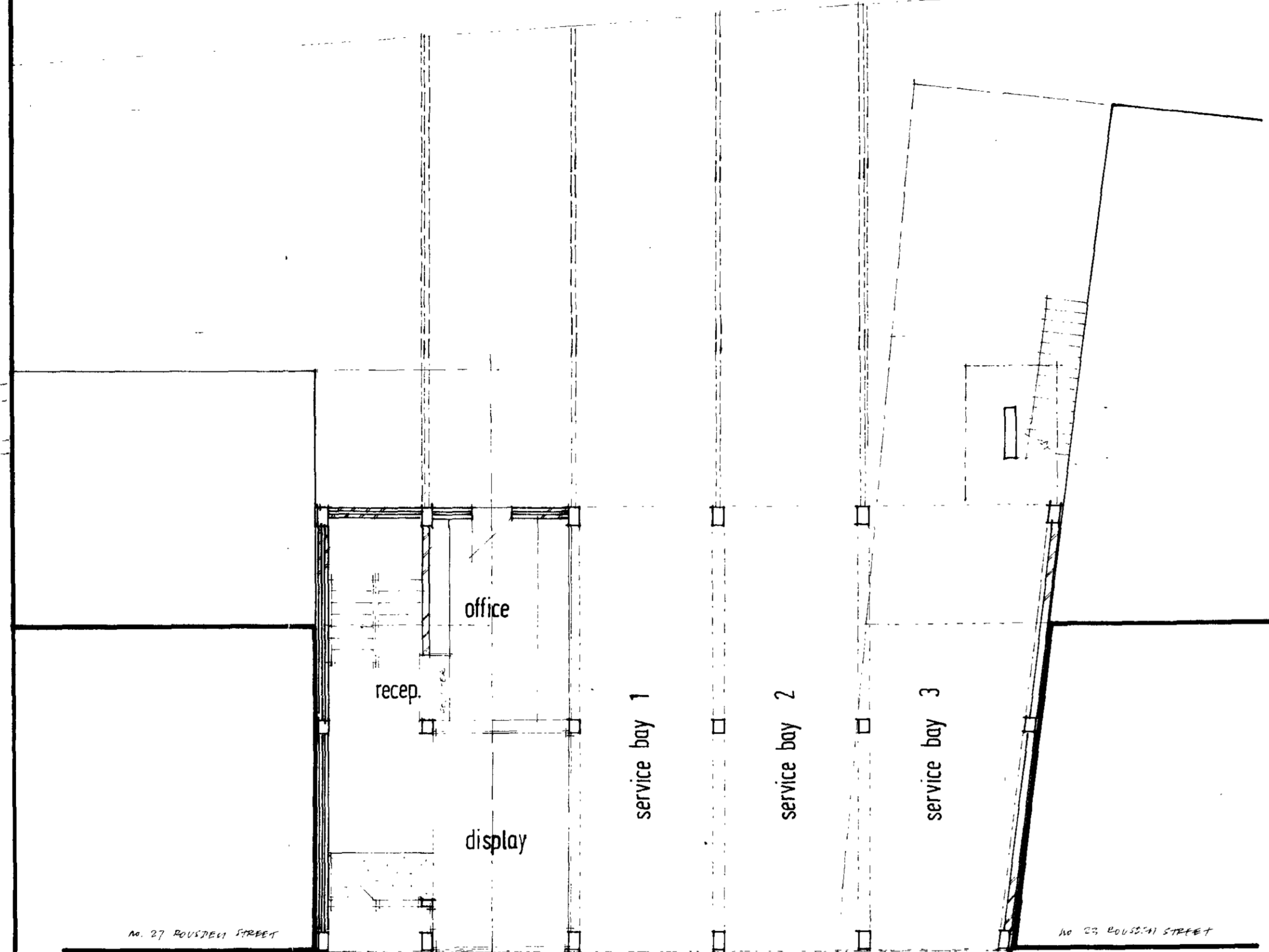
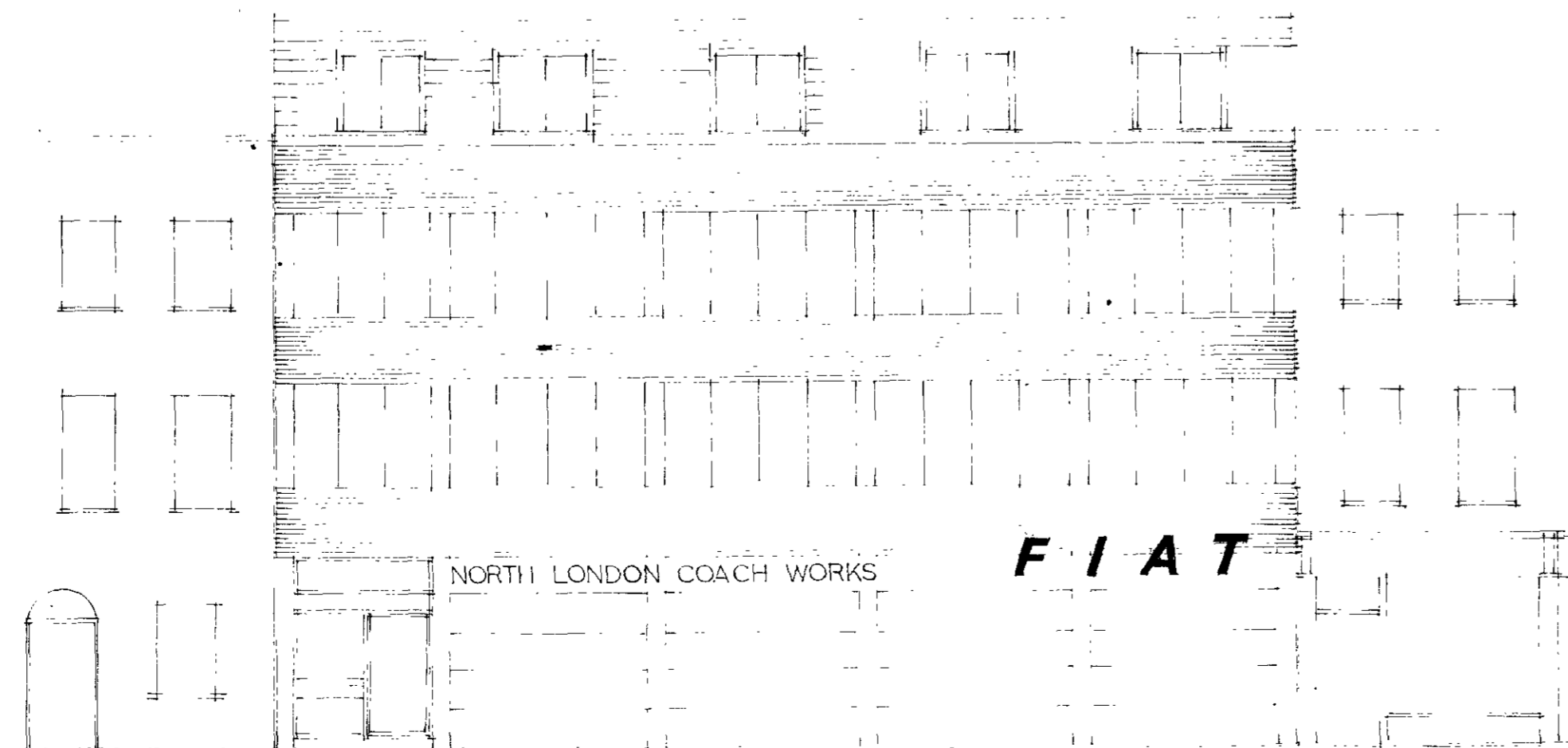


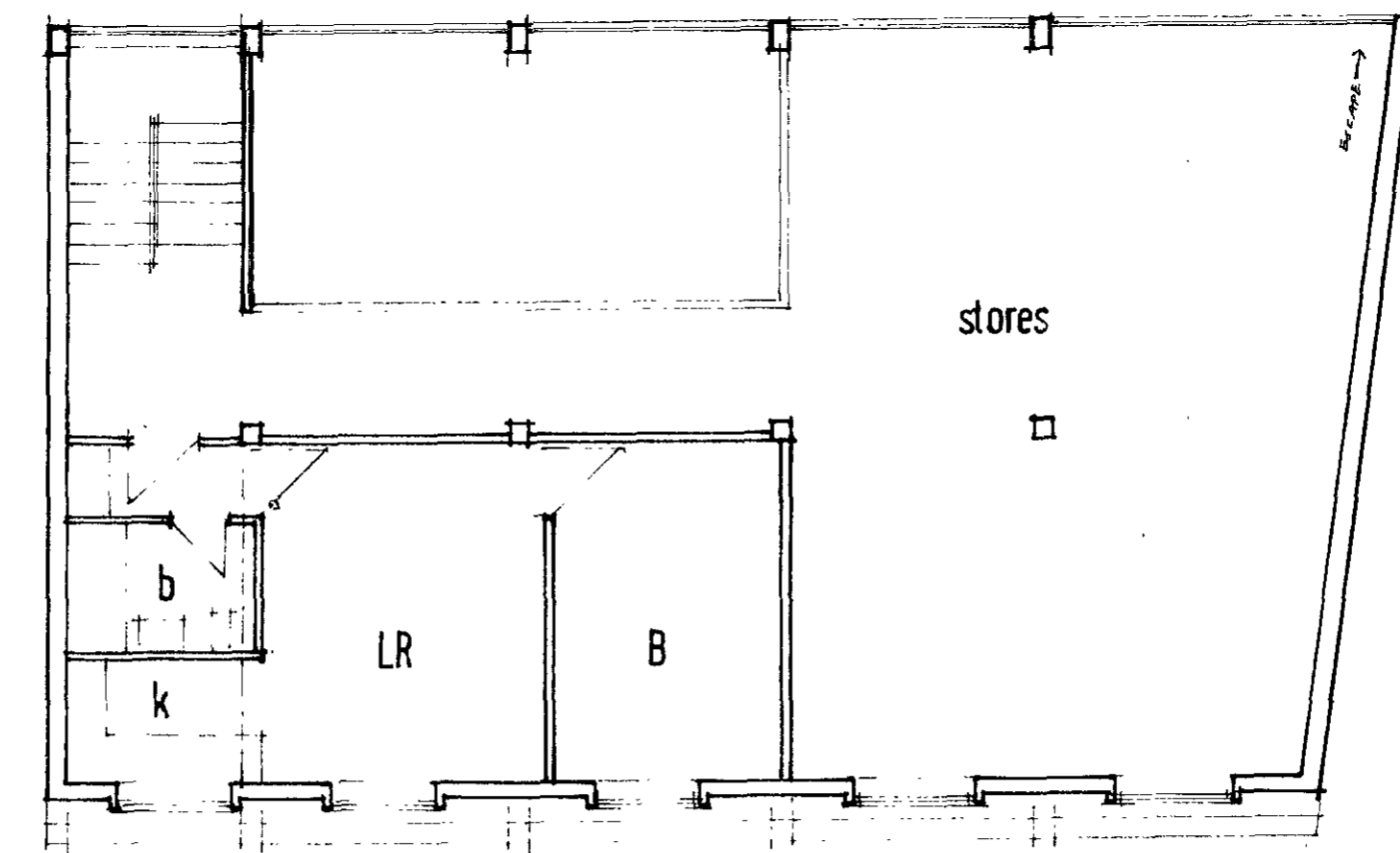
location plan



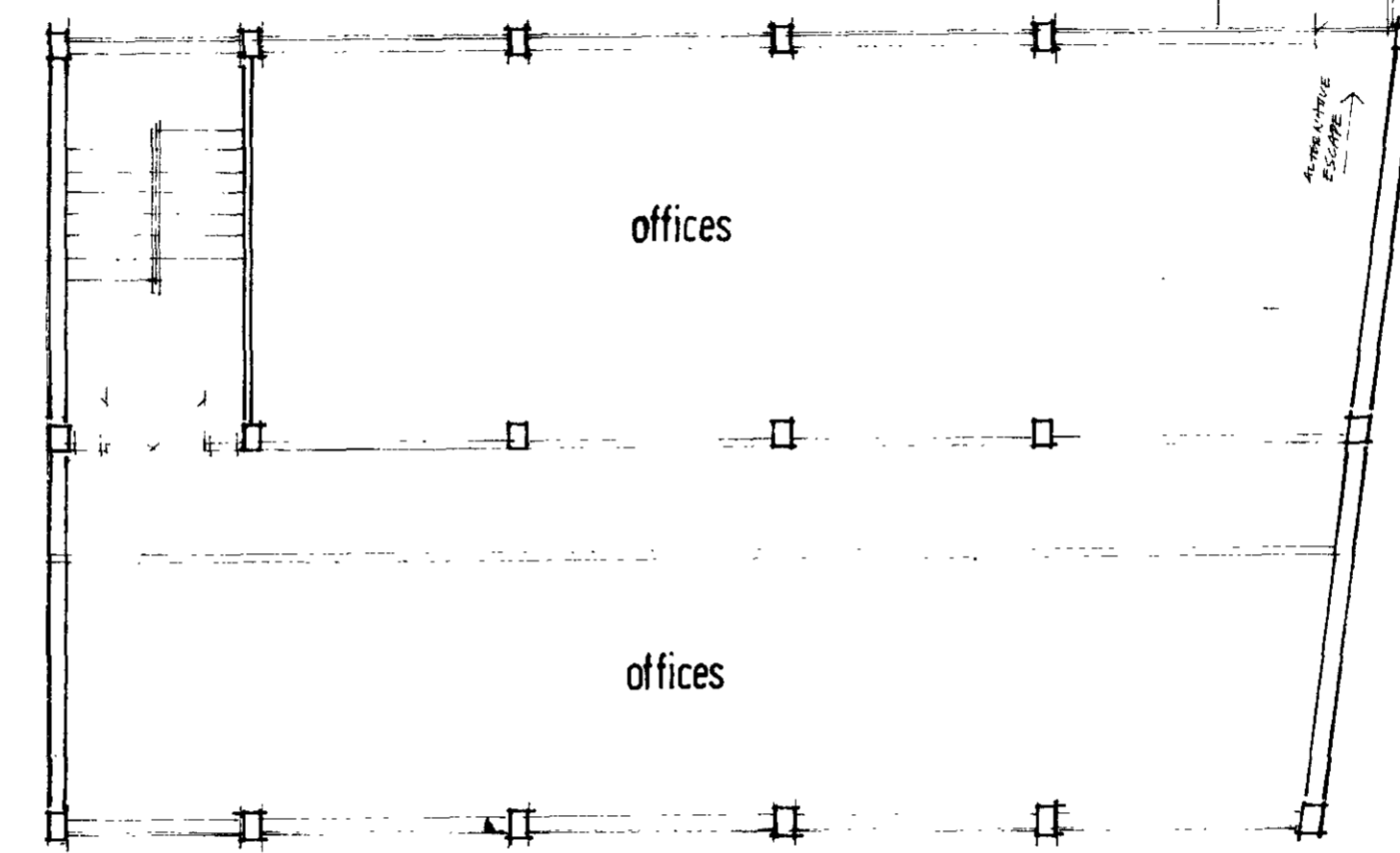
Rousden Street



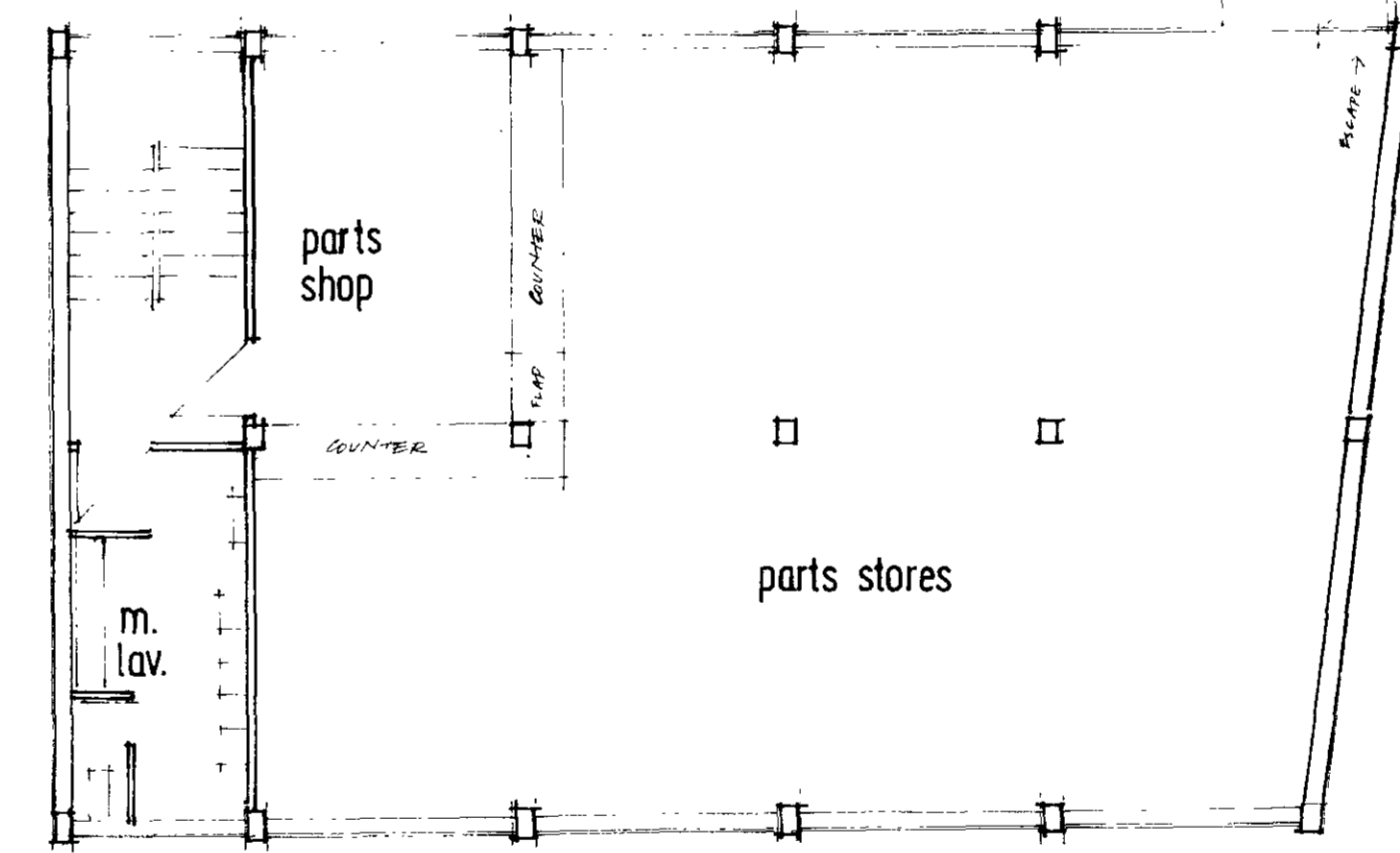
north elevation



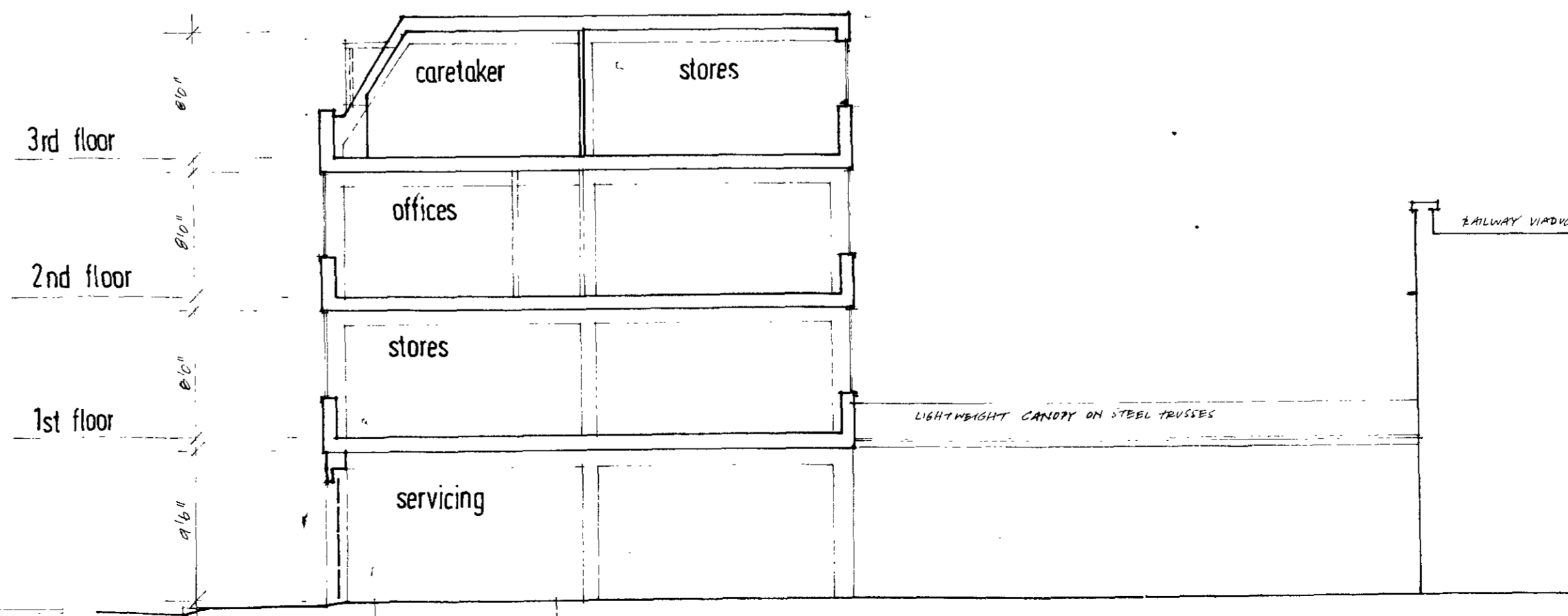
3rd floor



2nd floor



1st floor



NOTES

1/8" = 1'0"

102/1

CTP/412/26/A/1290

LONDON BOROUGH OF CAMDEN
 PLANS RECEIVED
 ON BEHALF OF THE COUNCIL

E COHEN AA DIP ARIBA
 24 PATSHULL RD NW5

North London Coach Works
 proposed development of 24 26 Rousden
 plans, elevation, section