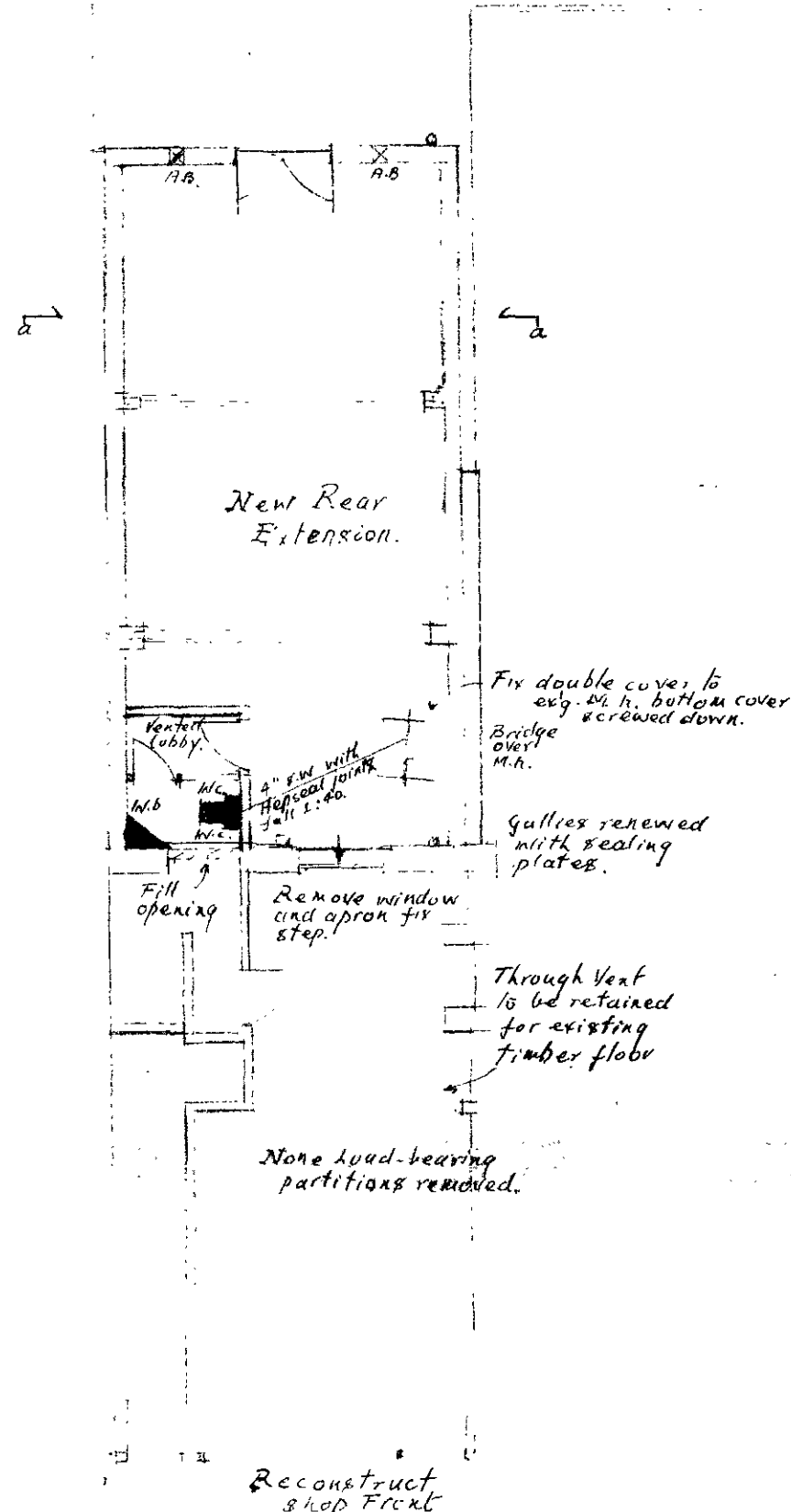
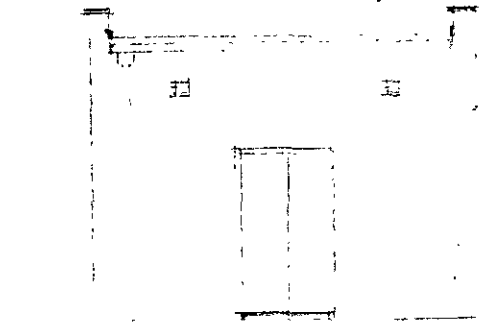


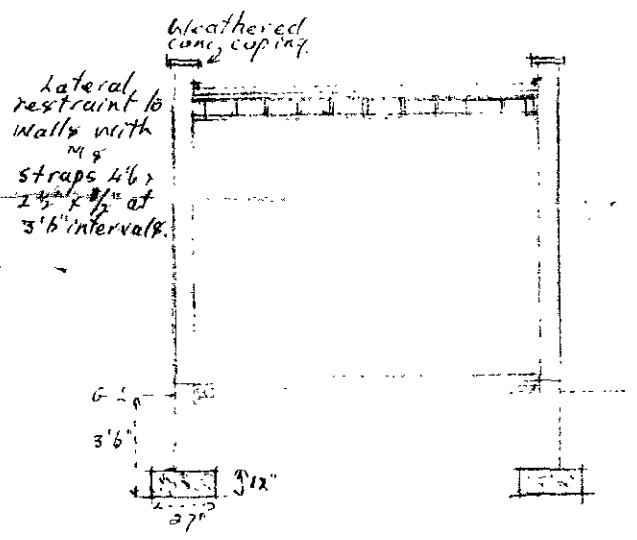
Ground Floor Plan - Existing.



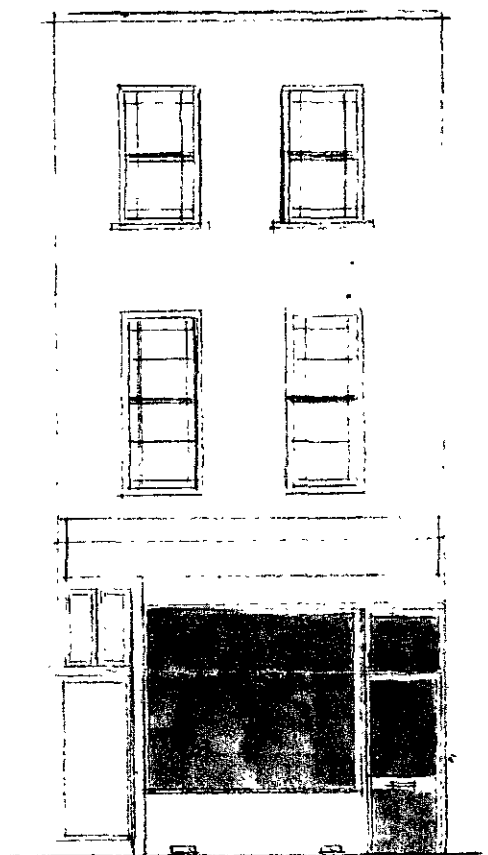
Ground Floor Plan - Proposed



Extension - Rear Elevation



Section a-a.



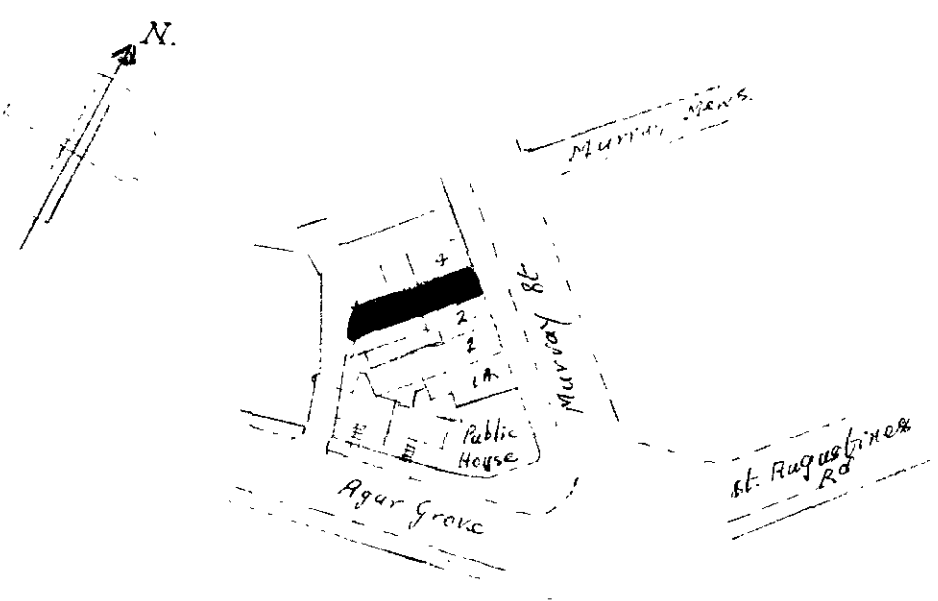
Front Elev'n - Proposed.

LONDON BOROUGH OF CAMDEN
TOWN AND COUNTRY PLANNING ACTS
8 APR 1987
PLANS NOT APPROVED
ON BEHALF OF THE COUNCIL

3, Murray St. - N.W. 1.

Proposed Ground Floor Ext'n at Rear

Scale 1/8" = 1ft. - Jan. 1987.



Block Plan - 1:1250.

LONDON BOROUGH OF CAMDEN
TOWN AND COUNTRY PLANNING ACTS
8 APR 1987
RECOMMENDATION AGREED
ON BEHALF OF THE COUNCIL

- Notes:-
1. New roof 6"x2" joists at 14" ctrs 3 layers roofing felt finished with 1/2" chippings laid in hot bitumen, 83 mm. Jurodek, 1 layer of felt, 2" decking, fixed to fall 1" in 10ft., foil backed p/bd to ceiling. Roof felt to BS 762 laid to e.p. 104 turned up at parapets 6" and pointed in.
 2. Walls 8" load-bearing blocks with brickwork to piers, angles, junctions and below floor level with lead cored felt d.p.c. lined internally with foil backed p/bd rendered externally.
 3. Floor 4" h.c., 4" conc., 2" screed with 1000 gauge p.c. membrane to lap d.p.c. in walls and exty.
 4. No 2 x 9" 6" R.B. J's fixed to carry joists, on 4" x 4" brick piers. Cased to 1/2 hr. fire resistance.
 5. Mech. Vent to M.C., fan operated from light switch with 20 min. overrun; fan motors in duplicate.
 6. W.C. drain with 6" conc surround, connected to M.H. with 1/4" section bend. Extg above ground drainage to be amended as necessary by agreement on site with A.R. officer.