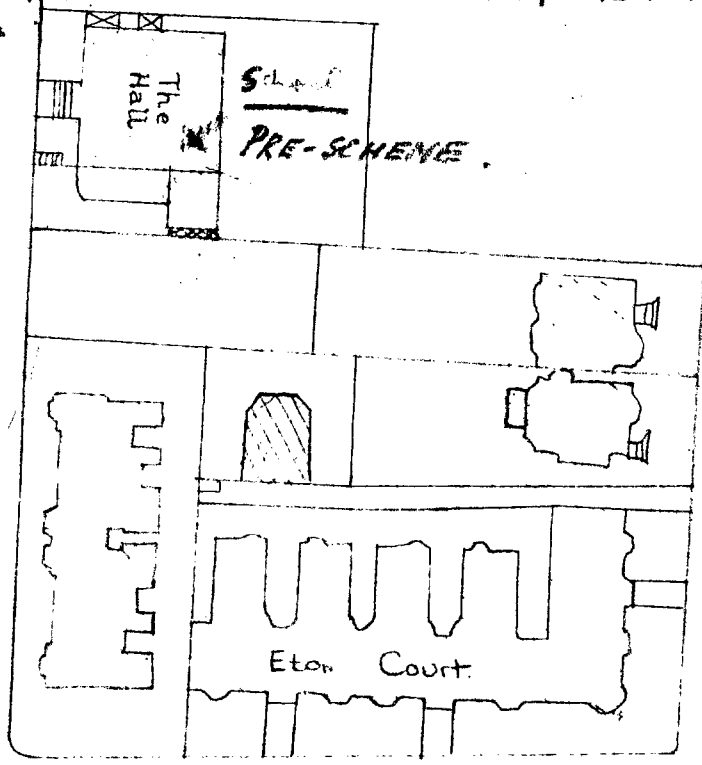
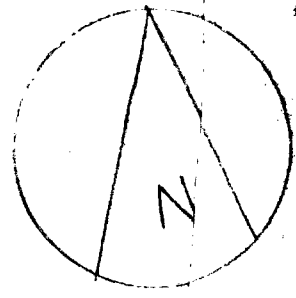
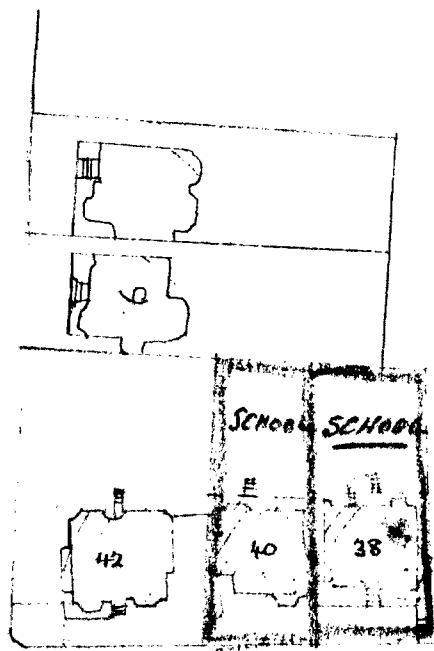


PRESENTED TO
20 MAY 1948
TOWN PLANNING
COMMITTEE.

40, ETON AVENUE



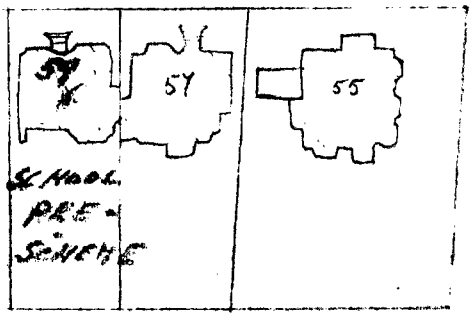
STRAFTHAY GARDENS



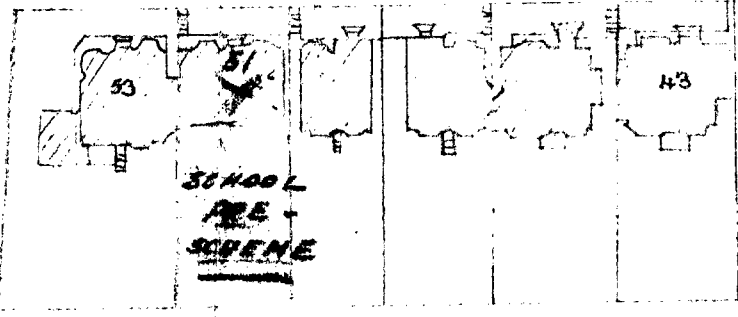
(APPROVED 1945)

ETON AVENUE

PRESENTED TO
14 MAY 1948
TOWN PLANNING
COMMITTEE.



KING'S COLLEGE ROAD



PRESENTED TO
16 MAY 1948
TOWN PLANNING
COMMITTEE.

TP 33183

SCALE 88' = 1"

BLOCK PLAN
DATED 15 MAY 1946 O.S. 73