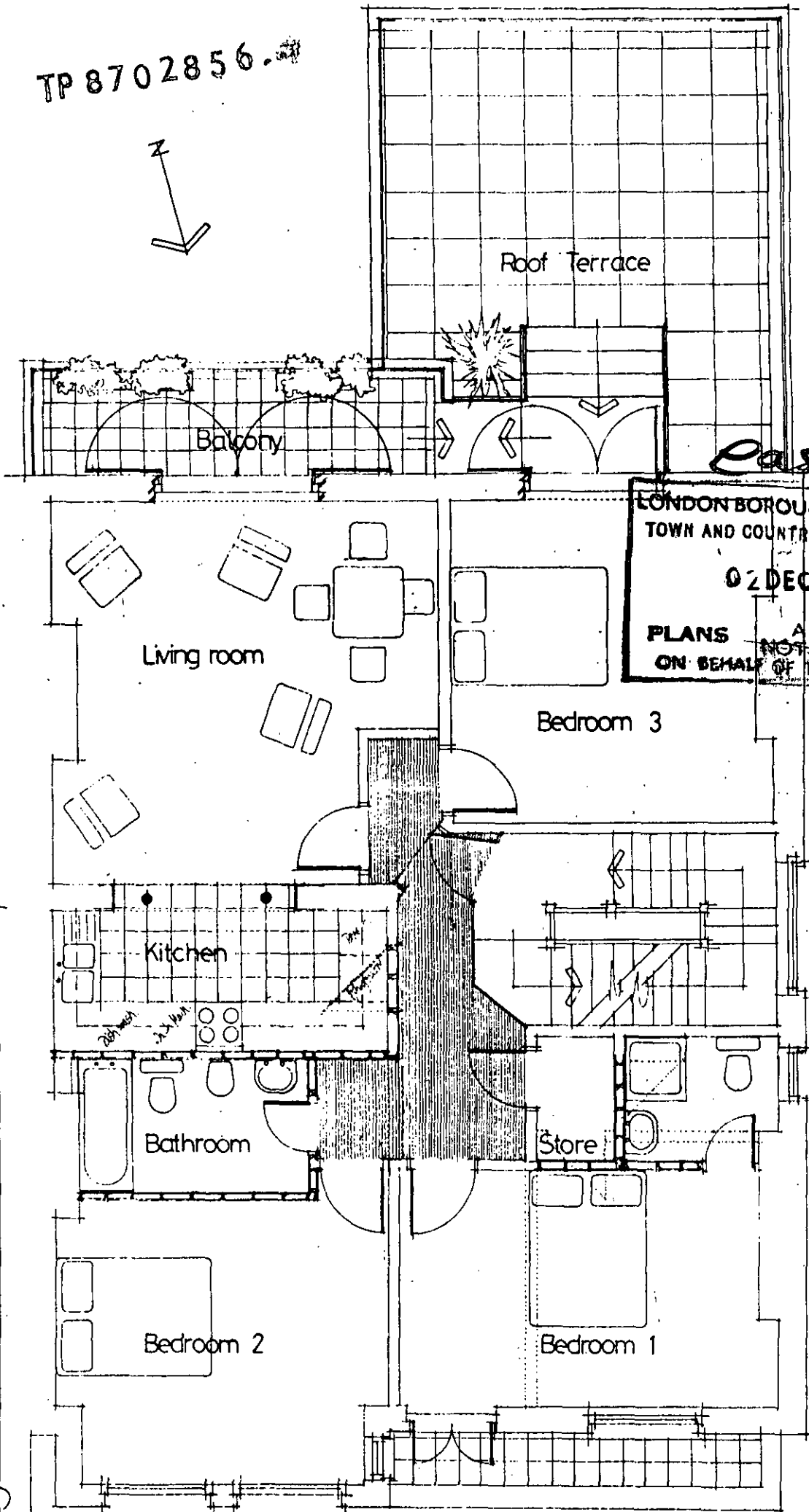


TP 8702856



*Case copy*

LONDON BOROUGH OF CAMDEN  
TOWN AND COUNTRY PLANNING ACTS  
02 DEC 1987  
PLANS APPROVED  
ON BEHALF OF THE COUNCIL

*Downing & Spink Architects 60 Chancery Lane London W6 Telephone 01-748 9202*

FIRST FLOOR AT 257 GOLDHURST TERRACE LONDON NW6 Scale 1/80 May 1987 Dwg No 8057/CR.

South elevation

*case copy*  
LONDON BOROUGH OF CAMDEN  
TOWN AND COUNTRY PLANNING ACTS  
02 DEC 1987  
APPROVED  
~~NOT APPROVED~~  
ON BEHALF OF THE COUNCIL

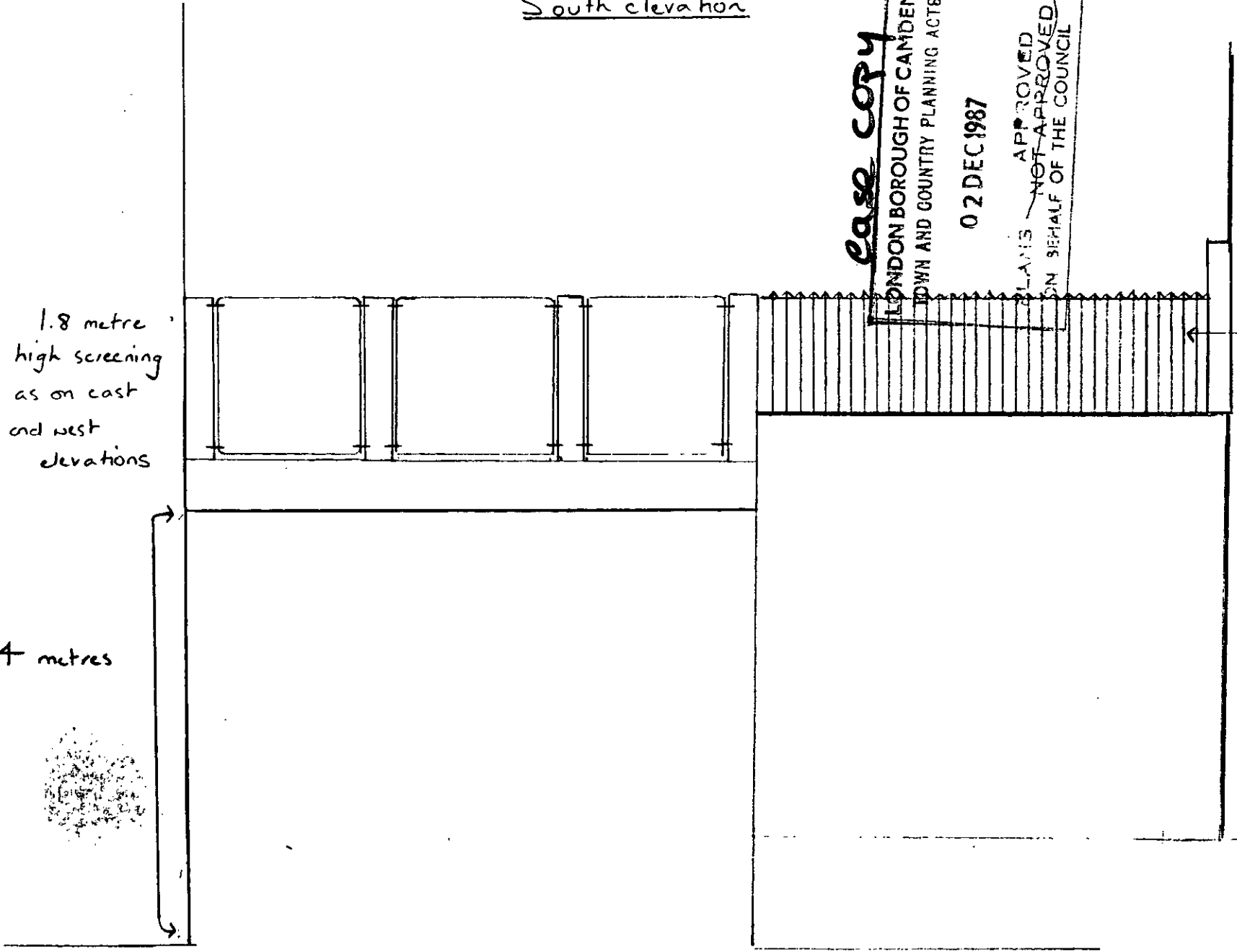
1.8 metre  
high screening  
as on east  
and west  
elevations

Railing along  
balcony

4 metres

Scale 1:50

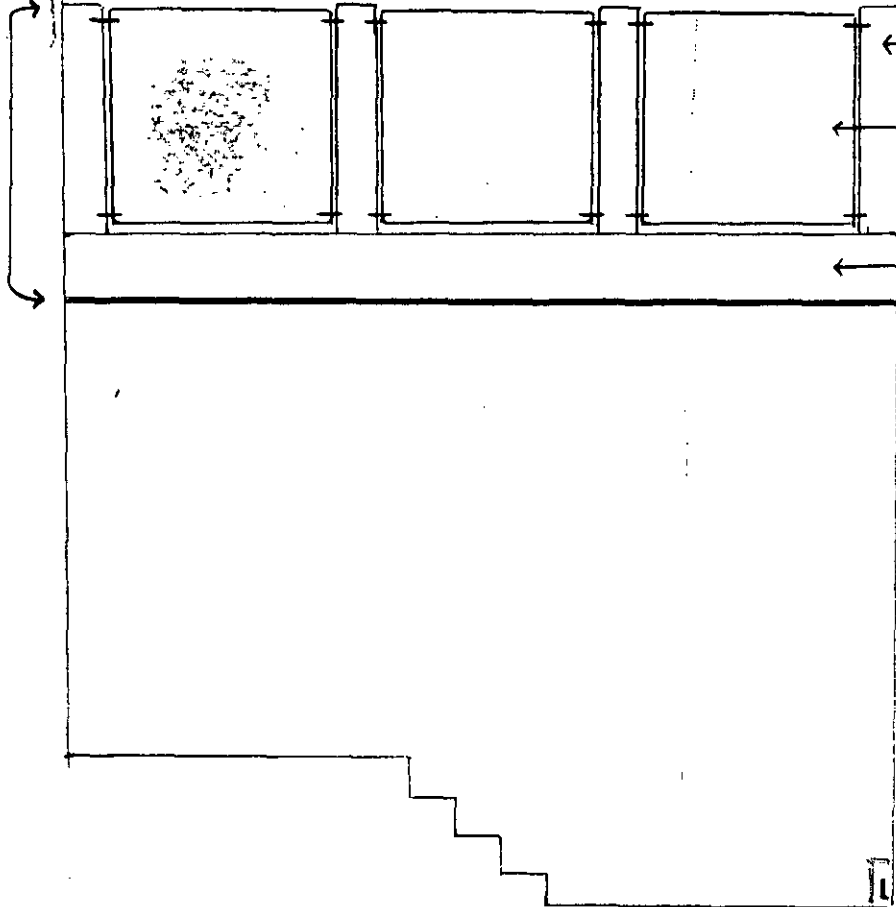
Proposed rear  
roof terrace at:  
257 Goldhurst  
Terrace  
NW6



West elevation

TP 8702856

1.8 m



Brick pillars

Opaque glass screening  
in hardwood frames

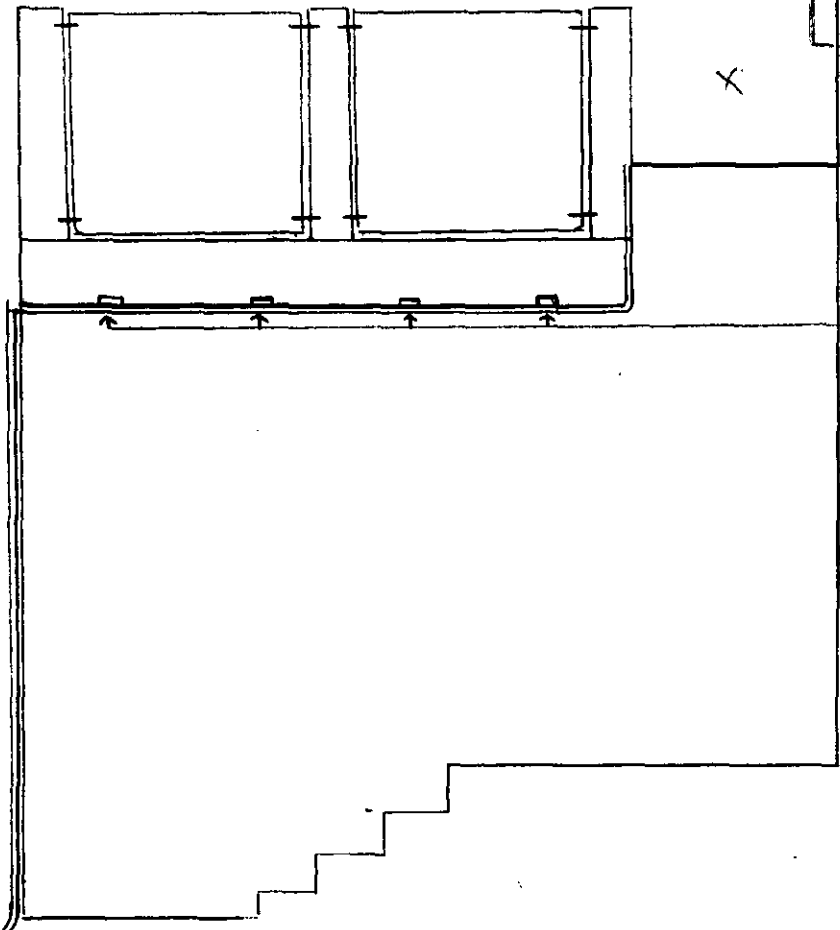
Low brick wall  
above roof level

4 metres

**case copy**

LONDON BOROUGH OF GOLDHURST  
TOWN AND COUNTRY PLANNING ACTS  
02 DEC 1987  
PLANS ~~NOT APPROVED~~ APPROVED  
ON BEHALF OF THE COUNCIL

East elevation



Screening as on  
west elevation

Drainage spaces -  
into existing guttering

Scale 1:50

Proposed rear roof  
terrace at:  
257 Goldhurst Terrace  
West Hampstead,  
NW6.